

District I
1625 N. French Dr., Hobbs, NM 88240
Phone:(575) 393-8161 Fax:(575) 393-0720
District II
811 S. First St., Artesia, NM 88210
Phone:(575) 748-1283 Fax:(575) 748-9720
District III
1000 Rio Brazos Rd., Aztec, NM 87410
Phone:(505) 334-8178 Fax:(505) 334-8170
District IV
1220 S. St Francis Dr., Santa Fe, NM 87505
Phone:(505) 476-3470 Fax:(505) 476-3482

State of New Mexico
Energy, Minerals and Natural Resources
Oil Conservation Division
1220 S. St Francis Dr.
Santa Fe, NM 87505

Form C-101
August 1, 2011
Permit 191680

APPLICATION FOR PERMIT TO DRILL, RE-ENTER, DEEPEN, PLUGBACK, OR ADD A ZONE

1. Operator Name and Address WHITING OIL AND GAS CORPORATION 400 W. Illinois Midland, TX 79701		2. OGRID Number 25078
4. Property Code 313666		3. API Number 30-021-20664
5. Property Name YARBROUGH 2028		6. Well No. 191

7. Surface Location

UL - Lot	G	Section	19	Township	20N	Range	28E	Lot Idn	Feet From	1700	N/S Line	N	Feet From	1700	E/W Line	E	County	Harding
----------	---	---------	----	----------	-----	-------	-----	---------	-----------	------	----------	---	-----------	------	----------	---	--------	---------

8. Proposed Bottom Hole Location

UL - Lot	G	Section	19	Township	20N	Range	28E	Lot Idn	G	Feet From	1700	N/S Line	N	Feet From	1700	E/W Line	E	County	Harding
----------	---	---------	----	----------	-----	-------	-----	---------	---	-----------	------	----------	---	-----------	------	----------	---	--------	---------

9. Pool Information

BRAVO DOME CARBON DIOXIDE GAS 640	96010
-----------------------------------	-------

Additional Well Information

11. Work Type New Well	12. Well Type CO2	13. Cable/Rotary	14. Lease Type Private	15. Ground Level Elevation 5545
16. Multiple N	17. Proposed Depth 3800	18. Formation Tubb	19. Contractor	20. Spud Date 9/8/2014
Depth to Ground water		Distance from nearest fresh water well		Distance to nearest surface water

☐ We will be using a closed-loop system in lieu of lined pits

21. Proposed Casing and Cement Program

Type	Hole Size	Casing Size	Casing Weight/ft	Setting Depth	Sacks of Cement	Estimated TOC
Surf	12.25	9.625	36	750	500	0
Prod	8.75	5.5	15.5	3800	450	0

Casing/Cement Program: Additional Comments

--

22. Proposed Blowout Prevention Program

Type	Working Pressure	Test Pressure	Manufacturer
Annular	3000	3000	REGAN TAURUS

23. I hereby certify that the information given above is true and complete to the best of my knowledge and belief. I further certify I have complied with 19.15.14.9 (A) NMAC <input checked="" type="checkbox"/> and/or 19.15.14.9 (B) NMAC <input checked="" type="checkbox"/> , if applicable. Signature: _____ Printed Name: Electronically filed by Kay Maddox Title: Regulatory Agent Email Address: kay.maddox@whiting.com Date: 9/9/2014	<div style="text-align: center;">OIL CONSERVATION DIVISION</div> Approved By: Charlie Perrin Title: District Supervisor Approved Date: 9/17/2014 Expiration Date: 9/17/2016 Conditions of Approval Attached
Phone: 432-686-6709	

DISTRICT I

1625 N. French Dr., Hobbs, NM 88240

State of New Mexico

Form C-102

DISTRICT II

1301 W. Grand Avenue, Artesia, NM 88210

Energy, Minerals, and Natural Resources Department

Revised October 12, 2005

OIL CONSERVATION DIVISION

Submit to Appropriate District Office

DISTRICT III

1000 Rio Brazos Rd., Aztec, NM 87410

1220 South St. Francis Dr.

State Lease - 4 copies

Fee Lease - 3 copies

DISTRICT IV

1220 S. St. Francis Dr., Santa Fe, NM 87505

Santa Fe, New Mexico 87505

☐ AMENDED REPORT**WELL LOCATION AND ACREAGE DEDICATION PLAT**

¹ API Number	² Pool Code 96010	³ Pool Name BRAVO DOME CARBON DIOXIDE (640)
⁴ Property Code	⁵ Property Name YARBROUGH 2028	⁶ Well Number 191
⁷ OGRID No. 25078	⁸ Operator Name WHITING OIL & GAS CORPORATION	⁹ Elevation 5545'

¹⁰ Surface Location

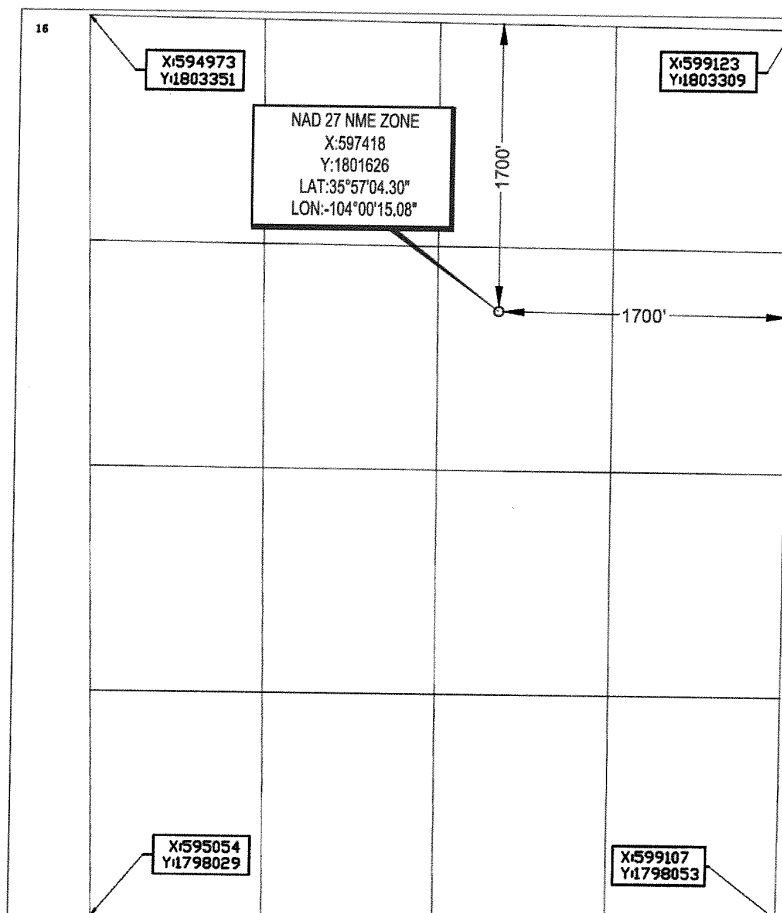
UL or lot no.	Section	Township	Range	Lot Idn	Feet from the	North/South line	Feet from the	East/West line	County
G	19	20 NORTH	28 EAST, N.M.P.M.		1700'	NORTH	1700'	EAST	HARDING

Bottom Hole Location If Different From Surface

UL or lot no.	Section	Township	Range	Lot Idn	Feet from the	North/South line	Feet from the	East/West line	County

¹² Dedicated Acres 655.60	¹³ Joint or Infill	¹⁴ Consolidation Code	¹⁵ Order No.
---	-------------------------------	----------------------------------	-------------------------

NO ALLOWABLE WELL BE ASSIGNED TO THIS COMPLETION UNTIL ALL INTERESTS HAVE BEEN CONSOLIDATED OR A NON-STANDARD UNIT HAS BEEN APPROVED BY THE DIVISION

**¹⁷ OPERATOR CERTIFICATION**

I hereby certify that the information contained herein is true and complete to the best of my knowledge and belief, and that this organization either owns a working interest or unleased mineral interest in the land including the proposed bottom hole location or has a right to drill this well at this location pursuant to a contract with an owner of such a mineral or working interest, or to a voluntary pooling agreement or a compulsory pooling order heretofore entered by the division.

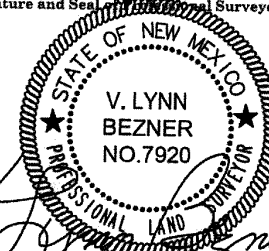
Kay Maddox 8/29/2014
 Signature Date
 KAY MADDOX
 Printed Name

¹⁸ SURVEYOR CERTIFICATION

I hereby certify that the well location shown on this plat was plotted from field notes of actual surveys made by me or under my supervision, and that the same is true and correct to the best of my belief.

AUGUST 20, 2014

Date of Survey
 Signature and Seal of Professional Surveyor



Certificate Number
 V. Lynn Bezner P.S. #7920

FILE:LO_YARBROUGH_2028_191_REV1 KY

District I
1625 N. French Dr., Hobbs, NM 88240
Phone:(575) 393-6161 Fax:(575) 393-0720
District II
811 S. First St., Artesia, NM 88210
Phone:(575) 748-1283 Fax:(575) 748-9720
District III
1000 Rio Brazos Rd., Aztec, NM 87410
Phone:(505) 334-6178 Fax:(505) 334-6170
District IV
1220 S. St Francis Dr., Santa Fe, NM 87505
Phone:(505) 476-3470 Fax:(505) 476-3462

State of New Mexico
Energy, Minerals and Natural Resources
Oil Conservation Division
1220 S. St Francis Dr.
Santa Fe, NM 87505

Form APD Comments

Permit 191680

PERMIT COMMENTS

Operator Name and Address: WHITING OIL AND GAS CORPORATION [25078] 400 W. Illinois Midland, TX 79701		API Number: 30-021-20664
		Well: YARBROUGH 2028 #191

Created By	Comment	Comment Date
AHVERMERSCH		9/9/2014

District I
1625 N. French Dr., Hobbs, NM 88240
Phone:(575) 393-6161 Fax:(575) 393-0720
District II
811 S. First St., Artesia, NM 88210
Phone:(575) 748-1283 Fax:(575) 748-9720
District III
1000 Rio Brazos Rd., Aztec, NM 87410
Phone:(505) 334-6178 Fax:(505) 334-6170
District IV
1220 S. St Francis Dr., Santa Fe, NM 87505
Phone:(505) 476-3470 Fax:(505) 476-3482

State of New Mexico
Energy, Minerals and Natural Resources
Oil Conservation Division
1220 S. St Francis Dr.
Santa Fe, NM 87505

Form APD Conditions

Permit 191680

PERMIT CONDITIONS OF APPROVAL

Operator Name and Address: WHITING OIL AND GAS CORPORATION [25078] 400 W. Illinois Midland, TX 79701	API Number: 30-021-20664
	Well: YARBROUGH 2028 #191

OCD Reviewer	Condition
--------------	-----------