

**District I**  
 1625 N. French Dr., Hobbs, NM 88240  
 Phone:(575) 393-6161 Fax:(575) 393-0720  
**District II**  
 811 S. First St., Artesia, NM 88210  
 Phone:(575) 749-1283 Fax:(575) 748-9720  
**District III**  
 1000 Rio Brazos Rd., Aztec, NM 87410  
 Phone:(505) 334-6178 Fax:(505) 334-6170  
**District IV**  
 1220 S. St Francis Dr., Santa Fe, NM 87505  
 Phone:(505) 476-3470 Fax:(505) 476-3462

**State of New Mexico**  
**Energy, Minerals and Natural Resources**  
**Oil Conservation Division**  
**1220 S. St Francis Dr.**  
**Santa Fe, NM 87505**

Form C-101  
 August 1, 2011  
 Permit 218453

**APPLICATION FOR PERMIT TO DRILL, RE-ENTER, DEEPEN, PLUGBACK, OR ADD A ZONE**

1. Operator Name and Address APACHE CORP 303 Veterans Airpark Lane Midland, TX 79705		2. OGRID Number 873
		3. API Number 30-025-43126
4. Property Code 37346	5. Property Name WEST BLINEBRY DRINKARD UNIT	6. Well No. 167

**7. Surface Location**

UL - Lot B	Section 16	Township 21S	Range 37E	Lot Idn B	Feet From 1310	N/S Line N	Feet From 1920	E/W Line E	County Lea
---------------	---------------	-----------------	--------------	--------------	-------------------	---------------	-------------------	---------------	---------------

**8. Proposed Bottom Hole Location**

UL - Lot B	Section 16	Township 21S	Range 37E	Lot Idn B	Feet From 1310	N/S Line N	Feet From 2045	E/W Line E	County Lea
---------------	---------------	-----------------	--------------	--------------	-------------------	---------------	-------------------	---------------	---------------

**9. Pool Information**

EUNICE;BLI-TU-DR, NORTH	22900
-------------------------	-------

**Additional Well Information**

11. Work Type New Well	12. Well Type OIL	13. Cable/Rotary	14. Lease Type State	15. Ground Level Elevation 3489
16. Multiple N	17. Proposed Depth 6900	18. Formation Drinkard	19. Contractor	20. Spud Date
Depth to Ground water		Distance from nearest fresh water well		Distance to nearest surface water

We will be using a closed-loop system in lieu of lined pits

**21. Proposed Casing and Cement Program**

Type	Hole Size	Casing Size	Casing Weight/ft	Setting Depth	Sacks of Cement	Estimated TOC
Surf	11	8.625	24	1300	450	0
Prod	7.875	5.5	17	6900	900	0

**Casing/Cement Program: Additional Comments**

--

**22. Proposed Blowout Prevention Program**

Type	Working Pressure	Test Pressure	Manufacturer
Double Ram	3000	2000	

23. I hereby certify that the information given above is true and complete to the best of my knowledge and belief. I further certify I have complied with 19.15.14.9 (A) NMAC <input checked="" type="checkbox"/> and/or 19.15.14.9 (B) NMAC <input checked="" type="checkbox"/> , if applicable.  Signature: Printed Name: Electronically filed by Bobby Smith Title: Email Address: bobby.smith@apachecorp.com Date: 3/17/2016 Phone: 432-818-1020	<b>OIL CONSERVATION DIVISION</b>  Approved By: Paul Kautz Title: Geologist Approved Date: 3/18/2016 Expiration Date: 3/18/2018 Conditions of Approval Attached
---	---

District I  
1625 N. French Dr., Hobbs, NM 88240  
Phone: (575) 393-6161 Fax: (575) 393-0720  
District II  
811 S. First St., Artesia, NM 88210  
Phone: (575) 748-1283 Fax: (575) 748-9720  
District III  
1000 Rio Brazos Road, Aztec, NM 87410  
Phone: (505) 334-6178 Fax: (505) 334-6170  
District IV  
1220 S. St. Francis Dr., Santa Fe, NM 87505  
Phone: (505) 476-3460 Fax: (505) 476-3462

State of New Mexico  
Energy, Minerals & Natural Resources Department  
OIL CONSERVATION DIVISION  
1220 South St. Francis Dr.  
Santa Fe, NM 87505

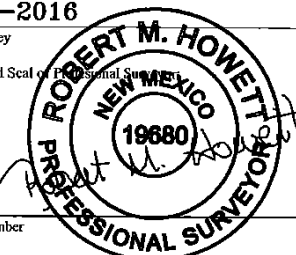
Form C-102  
Revised August 1, 2011  
Submit one copy to appropriate  
District Office

AMENDED REPORT

WELL LOCATION AND ACREAGE DEDICATION PLAT

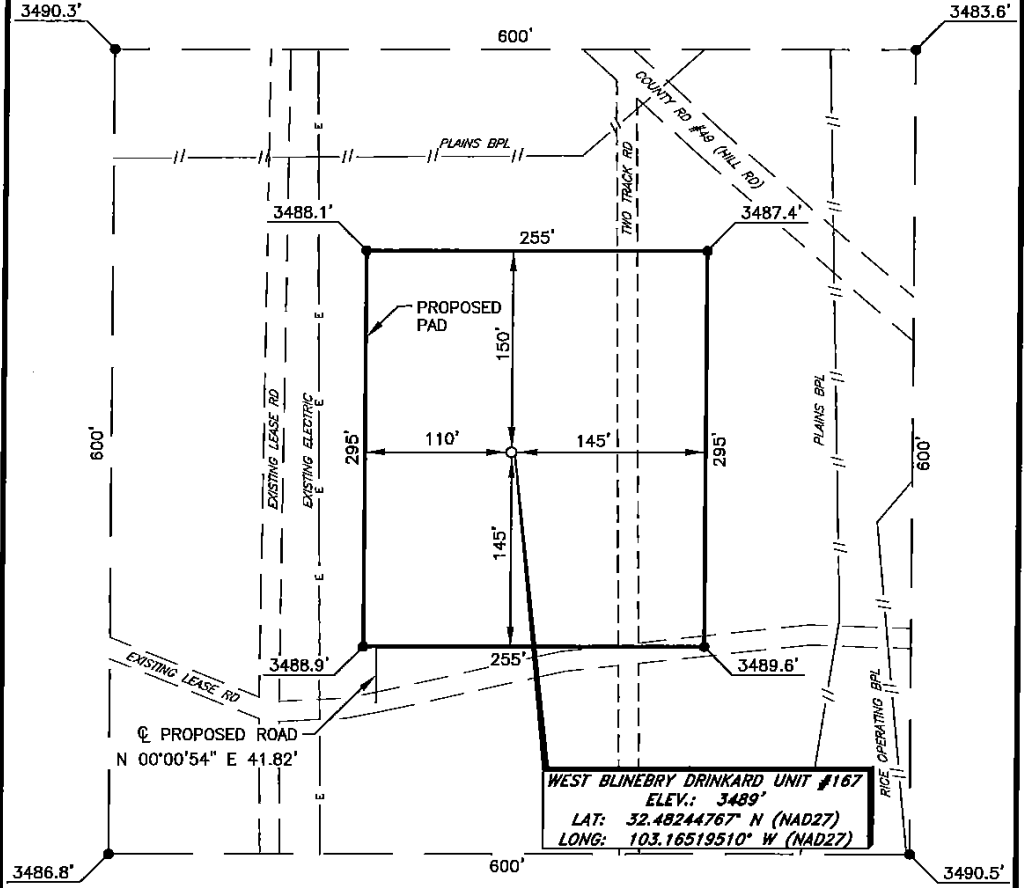
<sup>1</sup> API Number 30-025-		<sup>2</sup> Pool Code 22900		<sup>3</sup> Pool Name EUNICE; BLI-TU-DR, N.					
<sup>4</sup> Property Code 37346		<sup>5</sup> Property Name WEST BLINEBRY DRINKARD UNIT						<sup>6</sup> Well Number 167	
<sup>7</sup> GRID NO. 873		<sup>8</sup> Operator Name APACHE CORPORATION						<sup>9</sup> Elevation 3489'	
<sup>10</sup> Surface Location									
UL or lot no. B	Section 16	Township 21S	Range 37E	Lot Idn	Feet from the 1310	North/South line NORTH	Feet From the 1920	East/West line EAST	County LEA
<sup>11</sup> Bottom Hole Location If Different From Surface									
UL or lot no. B	Section 16	Township 21S	Range 37E	Lot Idn	Feet from the 1310	North/South line NORTH	Feet from the 2045	East/West line EAST	County LEA
<sup>12</sup> Dedicated Acres 40	<sup>13</sup> Joint or Infill	<sup>14</sup> Consolidation Code	<sup>15</sup> Order No.						

No allowable will be assigned to this completion until all interest have been consolidated or a non-standard unit has been approved by the division.

<p><sup>16</sup> <math>S 89^{\circ}26'00'' W 2641.97'</math></p> <p>GEODETIC DATA NAD 27 GRID - NM EAST</p> <p>SURFACE LOCATION N: 541199.8 - E: 860218.4 LAT: 32.48244767° N LONG: 103.16519510° W</p> <p>BOTTOM HOLE N: 541198.6 - E: 860093.4 LAT: 32.48244825° N LONG: 103.16560036° W</p> <p>CORNER DATA NAD 27 GRID - NM EAST</p> <p>A: CALCULATED CORNER N 537194.4 - E 856899.7</p> <p>B: FOUND BRASS CAP "1911" N 542476.5 - E 856839.2</p> <p>C: FOUND BRASS CAP "1911" N 542502.6 - E 859480.8</p> <p>D: FOUND ALUM CAP N 542528.3 - E 862122.5</p> <p>E: FOUND SPIKE N 537249.1 - E 862185.4</p> <p>F: FOUND BRASS CAP "1911" N 537222.9 - E 859542.2</p> <p style="text-align: center;">16 DETAIL "A"</p> <p style="text-align: center;">SEE DETAIL "A"</p> <p style="text-align: center;">S. L.</p> <p style="text-align: center;">B. H.</p> <p style="text-align: center;"><math>S 89^{\circ}28'11'' W (GRID)</math> <math>125.00' (HORIZ.)</math></p> <p style="text-align: center;">1310' 1310'</p> <p style="text-align: center;">1920'</p> <p style="text-align: center;">2045'</p> <p style="text-align: center;">3490.3' 600' 3483.6'</p> <p style="text-align: center;">500'</p> <p style="text-align: center;">S. L.</p> <p style="text-align: center;">3486.8' 3490.5'</p> <p><math>S 89^{\circ}22'56'' W 2642.97'</math></p> <p><math>S 89^{\circ}25'58'' W 2643.61'</math></p>	<p><sup>17</sup> OPERATOR CERTIFICATION</p> <p><i>I hereby certify that the information contained herein is true and complete to the best of my knowledge and belief, and that this organization either owns a working interest or unleased mineral interest in the land including the proposed bottom hole location or has a right to drill this well at this location pursuant to a contract with an owner of such a mineral or working interest, or to a voluntary pooling agreement or a compulsory pooling order heretofore entered by the division.</i></p> <p><i>Sorina L Flores</i> 3/17/16 Signature Date</p> <p>Sorina L Flores Printed Name</p> <p>sorina.flores@apachecorp.com E-mail Address</p> <p><sup>18</sup> SURVEYOR CERTIFICATION</p> <p><i>I hereby certify that the well location shown on this plat was plotted from field notes of actual surveys made by me or under my supervision, and that the same is true and correct to the best of my belief.</i></p> <p>1-29-2016 Date of Survey</p> <p>Signature and Seal of Professional Surveyor</p> <p style="text-align: center;">  </p> <p>19680 Certificate Number</p>
--	---

RRC - Firm No.: TX 10193838 NM 4655451 - Job No.: LS1601032

**APACHE CORPORATION  
WEST BLINEBRY DRINKARD UNIT #167  
(1310' FNL & 1920' FEL)  
SECTION 16, T21S, R37E  
N. M. P. M., LEA COUNTY, NEW MEXICO**



**DIRECTIONS TO LOCATION**

From the intersection of NM-207 and CR-49 (Hill Rd.);  
 Go West on CR-49 approx. 0.2 miles to a curve to the right and a lease road continuing West;  
 Continue West on lease road approx. 0.1 miles to proposed road on the right;  
 Turn right and go North approx. 186 feet to location on the right.

SCALE: 1" = 100'  
 0 50 100  
 BEARINGS ARE  
 NAD 27 GRID - NM EAST  
 DISTANCES ARE GROUND

I, R. M. Howett, a N. M. Professional Surveyor, hereby certify that the above is an unclassified survey of a well location from an actual survey made on the ground under my direct supervision, said survey and plat meet the Min. Stds. for Professional Surveying in the State of N. M. and are true and correct to the best of my knowledge and belief.

Robert M. Howett  
 Robert M. Howett NM PS 19680

Firm No.: TX 10193838 NM 4655451

Copyright 2014 - All Rights Reserved

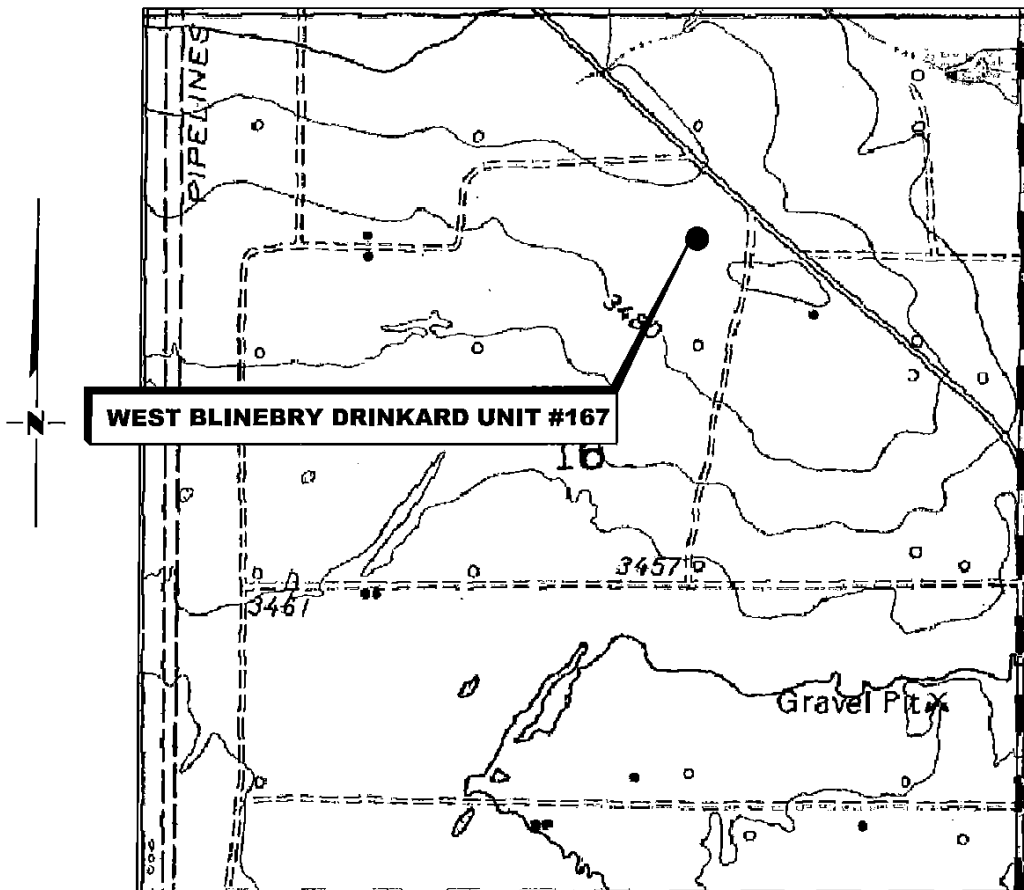
NO.	REVISION	DATE
JOB NO.: LS1601032		
DWG. NO.: 1601032PAD		

**RRC**

308 W. BROADWAY ST., HOBBS, NM 88240 (575) 964-8200

SCALE: 1" = 100'
DATE: 1-29-2016
SURVEYED BY: ML/CE
DRAWN BY: LPS
APPROVED BY: RMH
SHEET : 1 OF 1

# LOCATION VERIFICATION MAP



(Eunice, NM, is located approx. 3.3 miles to the Southeast.)

**SECTION 16, TWP. 21 SOUTH, RGE. 37 EAST,  
N. M. P. M., LEA CO., NEW MEXICO**

OPERATOR: Apache Corporation  
 LEASE: West Blinebry Drinkard Unit  
 WELL NO.: 167  
 ELEVATION: 3489'

LOCATION: 1310' FNL & 1920' FEL  
 CONTOUR INTERVAL: 10'  
 USGS TOPO. SOURCE MAP:  
Eunice, NM (1969)

Firm No.: TX 10193838 NM 4655451

Copyright 2015 - All Rights Reserved

NO.	REVISION	DATE
JOB NO.:	LS1601032	
DWG. NO.:	1601032LVM	

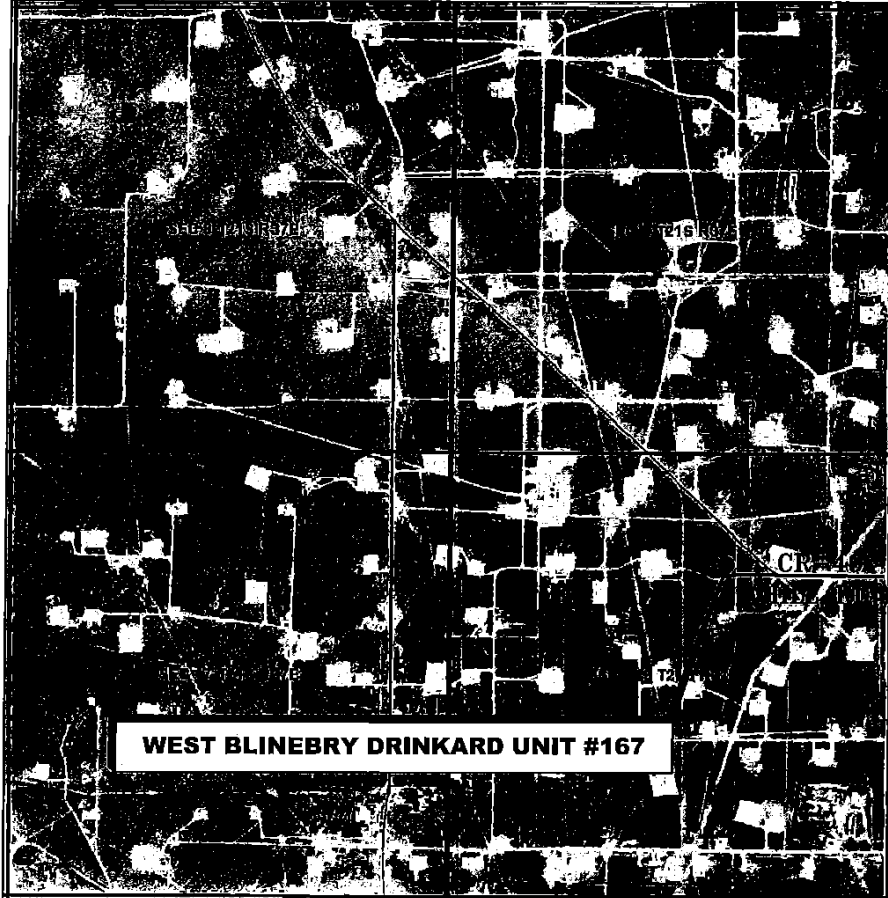
# RRC

308 W. BROADWAY ST., HOBBS, NM 88240 (575) 964-8200

SCALE:	1000'
DATE:	1-29-2016
SURVEYED BY:	ML/CE
DRAWN BY:	LPS
APPROVED BY:	RMH
SHEET :	1 OF 1

# VICINITY MAP

NOT TO SCALE



*SECTION 16, TWP. 21 SOUTH, RGE. 37 EAST,  
N. M. P. M., LEA CO., NEW MEXICO*

OPERATOR: Apache Corporation  
 LEASE: West Blinebry Drinkard Unit  
 WELL NO.: 167

LOCATION: 1310' FNL & 1920' FEL  
 ELEVATION: 3489'

Firm No.: TX 10193838 NM 4655451

Copyright 2014 - All Rights Reserved

NO.	REVISION	DATE
JOB NO.: LS1601032		
DWG. NO.: 1601032VM		

# RRC

308 W. BROADWAY ST., HOBBS, NM 88240 (575) 964-8200

SCALE: NTS
DATE: 1-29-2016
SURVEYED BY: ML/CE
DRAWN BY: LPS
APPROVED BY: RMH
SHEET : 1 OF 1

**District I**  
 1625 N. French Dr., Hobbs, NM 88240  
 Phone:(575) 393-6161 Fax:(575) 393-0720  
**District II**  
 811 S. First St., Artesia, NM 88210  
 Phone:(575) 749-1283 Fax:(575) 748-9720  
**District III**  
 1000 Rio Brazos Rd., Aztec, NM 87410  
 Phone:(505) 334-6178 Fax:(505) 334-6170  
**District IV**  
 1220 S. St Francis Dr., Santa Fe, NM 87505  
 Phone:(505) 476-3470 Fax:(505) 476-3462

**State of New Mexico**  
**Energy, Minerals and Natural Resources**  
**Oil Conservation Division**  
**1220 S. St Francis Dr.**  
**Santa Fe, NM 87505**

Form APD Comments

Permit 218453

**PERMIT COMMENTS**

Operator Name and Address: APACHE CORP [873] 303 Veterans Airpark Lane Midland, TX 79705	API Number: 30-025-43126
	Well: WEST BLINEBRY DRINKARD UNIT #167

Created By	Comment	Comment Date
------------	---------	--------------

**District I**  
 1625 N. French Dr., Hobbs, NM 88240  
 Phone:(575) 393-6161 Fax:(575) 393-0720  
**District II**  
 811 S. First St., Artesia, NM 88210  
 Phone:(575) 748-1283 Fax:(575) 748-9720  
**District III**  
 1000 Rio Brazos Rd., Aztec, NM 87410  
 Phone:(505) 334-6178 Fax:(505) 334-6170  
**District IV**  
 1220 S. St Francis Dr., Santa Fe, NM 87505  
 Phone:(505) 476-3470 Fax:(505) 476-3462

**State of New Mexico**  
**Energy, Minerals and Natural Resources**  
**Oil Conservation Division**  
**1220 S. St Francis Dr.**  
**Santa Fe, NM 87505**

Form APD Conditions

Permit 218453

**PERMIT CONDITIONS OF APPROVAL**

Operator Name and Address: APACHE CORP [873] 303 Veterans Airpark Lane Midland, TX 79705	API Number: 30-025-43126
	Well: WEST BLINEBRY DRINKARD UNIT #167

OCD Reviewer	Condition
pkautz	Will require a directional survey with the C-104
pkautz	Once the well is spud, to prevent ground water contamination through whole or partial conduits from the surface, the operator shall drill without interruption through the fresh water zone or zones and shall immediately set in cement the water protection string
pkautz	If using a pit for drilling and completion operations, must have an approved pit from prior to spudding the well.
pkautz	SURFACE & PRODUCTION CASING - Cement must circulate to surface
pkautz	If cement does not circulate to surface, must run temperature survey or other log to determine top of cement
pkautz	Surface casing must be set 25' below top of Rustler Anhydrite in order to seal off protectable water
pkautz	Must notify OCD Hobbs Office if lost circulation is encountered at 575-370-3186
pkautz	1) Must notify OCD Hobbs Office prior to running Stage Tool at 575-370-3186 2) If using Stage Tool on Surface casing, Stage Tool must be set greater than 350' from surface and a minimum of 200 feet above surface shoe. 3) When using a Stage Tool on Intermediate or Production Casing Stage must be a minimum of 50 feet below previous casing shoe.