

**District I**  
1625 N. French Dr., Hobbs, NM 88240  
Phone:(575) 393-8161 Fax:(575) 393-0720  
**District II**  
811 S. First St., Artesia, NM 88210  
Phone:(575) 748-1283 Fax:(575) 748-9720  
**District III**  
1000 Rio Brazos Rd., Aztec, NM 87410  
Phone:(505) 334-8178 Fax:(505) 334-8170  
**District IV**  
1220 S. St Francis Dr., Santa Fe, NM 87505  
Phone:(505) 476-3470 Fax:(505) 476-3482

**State of New Mexico**  
**Energy, Minerals and Natural Resources**  
**Oil Conservation Division**  
**1220 S. St Francis Dr.**  
**Santa Fe, NM 87505**

Form C-101  
August 1, 2011  
Permit 230396

**APPLICATION FOR PERMIT TO DRILL, RE-ENTER, DEEPEN, PLUGBACK, OR ADD A ZONE**

|   |  |                               |
|---|--|-------------------------------|
| 1. Operator Name and Address<br>APACHE CORP<br>303 Veterans Airpark Lane<br>Midland, TX 79705 |  | 2. OGRID Number<br>873        |
| 4. Property Code<br>37346   |  | 3. API Number<br>30-025-43529 |
| 5. Property Name<br>WEST BLINEBRY DRINKARD UNIT   |  | 6. Well No.<br>180            |

**7. Surface Location**

|          |   |         |    |          |     |       |     |         |   |           |     |          |   |           |      |          |   |        |     |
|----------|---|---------|----|----------|-----|-------|-----|---------|---|-----------|-----|----------|---|-----------|------|----------|---|--------|-----|
| UL - Lot | O | Section | 17 | Township | 21S | Range | 37E | Lot Idn | O | Feet From | 784 | N/S Line | S | Feet From | 2061 | E/W Line | E | County | Lea |
|----------|---|---------|----|----------|-----|-------|-----|---------|---|-----------|-----|----------|---|-----------|------|----------|---|--------|-----|

**8. Proposed Bottom Hole Location**

|          |   |         |    |          |     |       |     |         |   |           |     |          |   |           |      |          |   |        |     |
|----------|---|---------|----|----------|-----|-------|-----|---------|---|-----------|-----|----------|---|-----------|------|----------|---|--------|-----|
| UL - Lot | O | Section | 17 | Township | 21S | Range | 37E | Lot Idn | O | Feet From | 784 | N/S Line | S | Feet From | 2061 | E/W Line | E | County | Lea |
|----------|---|---------|----|----------|-----|-------|-----|---------|---|-----------|-----|----------|---|-----------|------|----------|---|--------|-----|

**9. Pool Information**

|                         |       |
|-------------------------|-------|
| EUNICE,BLI-TU-DR, NORTH | 22900 |
|-------------------------|-------|

**Additional Well Information**

|                           |                            |  |                           |                                    |
|---------------------------|----------------------------|--|---------------------------|------------------------------------|
| 11. Work Type<br>New Well | 12. Well Type<br>OIL       | 13. Cable/Rotary                       | 14. Lease Type<br>Private | 15. Ground Level Elevation<br>3478 |
| 16. Multiple<br>N         | 17. Proposed Depth<br>7000 | 18. Formation<br>Drinkard              | 19. Contractor            | 20. Spud Date<br>3/1/2017          |
| Depth to Ground water     |                            | Distance from nearest fresh water well |                           | Distance to nearest surface water  |

☐ We will be using a closed-loop system in lieu of lined pits

**21. Proposed Casing and Cement Program**

| Type | Hole Size | Casing Size | Casing Weight/ft | Setting Depth | Sacks of Cement | Estimated TOC |
|------|-----------|-------------|------------------|---------------|-----------------|---------------|
| Surf | 11        | 8.625       | 24               | 1280          | 300             |               |
| Prod | 7.875     | 5.5         | 17               | 7000          | 940             |               |

**Casing/Cement Program: Additional Comments**

|  |
|--|
|  |
|--|

**22. Proposed Blowout Prevention Program**

|        |                  |               |              |
|--------|------------------|---------------|--------------|
| Type   | Working Pressure | Test Pressure | Manufacturer |
| Hydril | 2000             | 1200          |              |

|   |  |
|---|--|
| 23. I hereby certify that the information given above is true and complete to the best of my knowledge and belief.<br>I further certify I have complied with 19.15.14.9 (A) NMAC ☒ and/or 19.15.14.9 (B) NMAC ☒, if applicable.<br><br>Signature: _____<br>Printed Name: Electronically filed by Bobby Smith<br>Title: _____<br>Email Address: bobby.smith@apachecorp.com<br>Date: 1/3/2017 | <div style="text-align: center;"><b>OIL CONSERVATION DIVISION</b></div> Approved By: Paul Kautz<br>Title: Geologist<br>Approved Date: 1/4/2017<br>Expiration Date: 1/4/2019<br>Conditions of Approval Attached |
|---|--|

District I  
1625 N. French Dr., Hobbs, NM 88240  
Phone: (575) 393-6161 Fax: (575) 393-0720  
District II  
811 S. First St., Artesia, NM 88210  
Phone: (575) 748-1283 Fax: (575) 748-9720  
District III  
1000 Rio Brazos Road, Aztec, NM 87410  
Phone: (505) 334-6178 Fax: (505) 334-6170  
District IV  
1220 S. St. Francis Dr., Santa Fe, NM 87505  
Phone: (505) 476-3460 Fax: (505) 476-3462

State of New Mexico  
Energy, Minerals & Natural Resources Department  
OIL CONSERVATION DIVISION  
1220 South St. Francis Dr.  
Santa Fe, NM 87505

Form C-102  
Revised August 1, 2011  
Submit one copy to appropriate  
District Office

☐ AMENDED REPORT

WELL LOCATION AND ACREAGE DEDICATION PLAT

|  |  |   |
|--|--|---|
| <sup>1</sup> API Number<br><b>30-025-</b>  | <sup>2</sup> Pool Code<br><b>22900</b>                           | <sup>3</sup> Pool Name<br><b>EUNICE; BLI-TU-DR, NORTH</b> |
| <sup>4</sup> Property Code<br><b>37346</b> | <sup>5</sup> Property Name<br><b>WEST BLINEBRY DRINKARD UNIT</b> |   |
| <sup>7</sup> GRID NO.<br><b>873</b>        | <sup>8</sup> Operator Name<br><b>APACHE CORPORATION</b>          | <sup>6</sup> Well Number<br><b>180</b>                    |
|  |  | <sup>9</sup> Elevation<br><b>3478'</b>                    |

<sup>10</sup> Surface Location

| UL or lot no. | Section   | Township   | Range      | Lot Idn | Feet from the | North/South line | Feet from the | East/West line | County     |
|---------------|-----------|------------|------------|---------|---------------|------------------|---------------|----------------|------------|
| <b>0</b>      | <b>17</b> | <b>21S</b> | <b>37E</b> |         | <b>784</b>    | <b>SOUTH</b>     | <b>2061</b>   | <b>EAST</b>    | <b>LEA</b> |

<sup>11</sup> Bottom Hole Location If Different From Surface

| UL or lot no. | Section | Township | Range | Lot Idn | Feet from the | North/South line | Feet from the | East/West line | County |
|---------------|---------|----------|-------|---------|---------------|------------------|---------------|----------------|--------|
|               |         |          |       |         |               |                  |               |                |        |

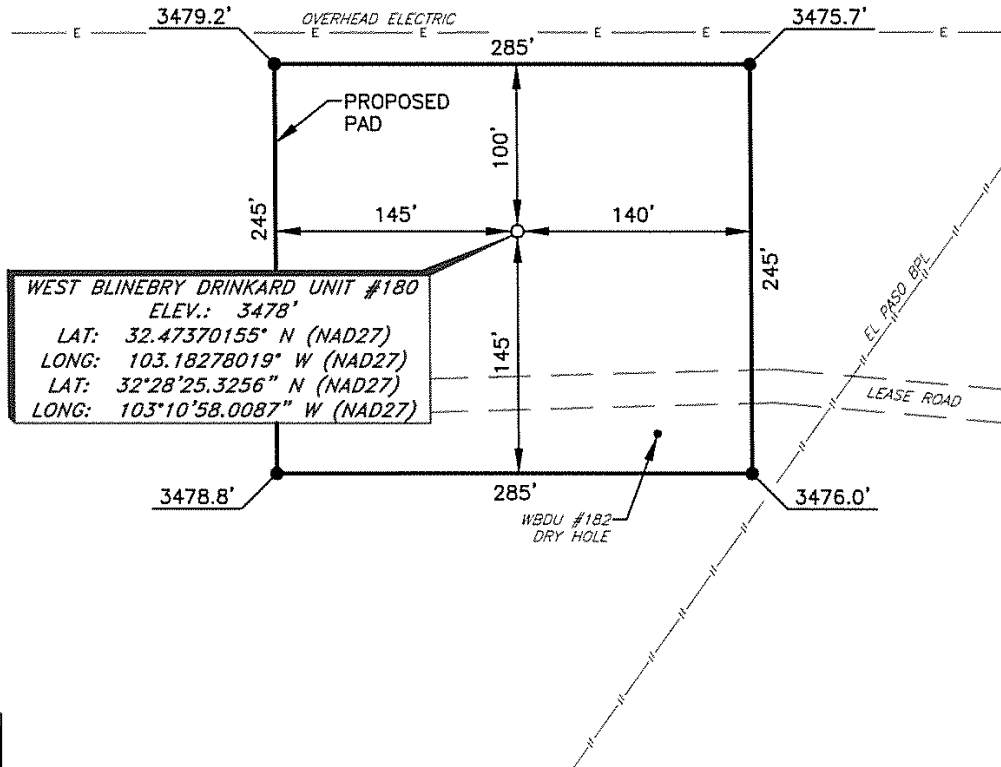
|  |                               |                                  |                         |
|--|-------------------------------|----------------------------------|-------------------------|
| <sup>12</sup> Dedicated Acres<br><b>40</b> | <sup>13</sup> Joint or Infill | <sup>14</sup> Consolidation Code | <sup>15</sup> Order No. |
|  |                               |                                  |                         |

No allowable will be assigned to this completion until all interest have been consolidated or a non-standard unit has been approved by the division.

|   |   |
|---|---|
| <p><sup>16</sup> (C)</p> <p><b>GEODETIC DATA</b><br/>NAD 27 GRID -- NM EAST</p> <p><b>SURFACE LOCATION</b><br/>N: 537958.9 -- E: 854829.7</p> <p>LAT: 32.47370155° N<br/>LONG: 103.18278019° W</p> <p>LAT = 32°28'25.3256" N<br/>LONG = 103°10'58.0087" W</p> <p><b>CORNER DATA</b><br/>NAD 27 GRID -- NM EAST</p> <p>A: CALCULATED CORNER<br/>N: 537145.2 -- E: 851619.3</p> <p>B: FOUND BRASS CAP "1911"<br/>N: 539785.9 -- E: 851590.3</p> <p>C: FOUND BRASS CAP "1911"<br/>N: 542424.8 -- E: 851561.6</p> <p>D: FOUND BRASS CAP "1911"<br/>N: 542451.6 -- E: 854200.7</p> <p>E: FOUND BRASS CAP "1911"<br/>N: 542476.3 -- E: 856839.2</p> <p>F: CALCULATED CORNER<br/>N: 537194.4 -- E: 856899.7</p> <p>(B)</p> <p><b>17</b></p> <p>(A)</p> | <p>(D)</p> <p>(E)</p> <p><b>17 OPERATOR CERTIFICATION</b><br/>I hereby certify that the information contained herein is true and complete to the best of my knowledge and belief, and that this organization either owns a working interest or unleased mineral interest in the land including the proposed bottom hole location or has a right to drill this well at this location pursuant to a contract with an owner of such a mineral or working interest, or to a voluntary pooling agreement or a compulsory pooling order heretofore entered by the division.</p> <p><i>Sorina L Flores</i> 1/13/2017<br/>Signature Date<br/><b>SORINA L. FLORES</b><br/>Printed Name<br/><a href="mailto:sorina.flores@apachecorp.com">sorina.flores@apachecorp.com</a><br/>E-mail Address</p> <p><b>18 SURVEYOR CERTIFICATION</b><br/>I hereby certify that the well location shown on this plat was plotted from field notes of actual surveys made by me or under my supervision, and that the same is true and correct to the best of my belief.</p> <p><b>11-29-2016</b><br/>Date of Survey<br/>Signature and Seal of Professional Surveyor<br/><b>19680</b><br/>Certificate Number</p> <p><b>ROBERT M. HOWETT</b><br/>NEW MEXICO<br/>19680<br/>PROFESSIONAL SURVEYOR</p> |
|   | <p>(F)</p> <p><b>19680</b><br/>Certificate Number</p>   |

RRC - Firm No.: TX 10193838 NM 4655451 - Job No.: LS1611390

**APACHE CORPORATION**  
**WEST BLINEBRY DRINKARD UNIT #180**  
**(784' FSL & 2061' FEL)**  
**SECTION 17, T21S, R37E**  
**N. M. P. M., LEA CO., NEW MEXICO**



**WEST BLINEBRY DRINKARD UNIT #180**  
**ELEV.: 3478'**  
**LAT: 32.47370155° N (NAD27)**  
**LONG: 103.18278019° W (NAD27)**  
**LAT: 32°28'25.3256" N (NAD27)**  
**LONG: 103°10'58.0087" W (NAD27)**

**DIRECTIONS TO LOCATION**

*From the intersection of U.S. CR-33 (Turner Rd.) and CR-36 (Curry Rd.);*  
*Go North on CR-33 approx. 0.1 miles to a lease road on the left;*  
*Turn left and go West approx. 0.25 miles, to location.*

**SCALE: 1" = 100'**  
0 50 100  
**BEARINGS ARE**  
**NAD 27 GRID - NM EAST**  
**DISTANCES ARE**  
**GROUND.**

Firm No.: TX 10193838 NM 4655451

Copyright 2016 - All Rights Reserved

|           |            |      |
|-----------|------------|------|
| NO.       | REVISION   | DATE |
| JOB NO.:  | LS1611390  |      |
| DWG. NO.: | 1611390PAD |      |

**RRC**

308 W. BROADWAY ST., HOBBS, NM 88240 (575) 964-8200

|                           |
|---------------------------|
| <b>SCALE: 1" = 100'</b>   |
| <b>DATE: 11-29-2016</b>   |
| <b>SURVEYED BY: ML/CG</b> |
| <b>DRAWN BY: CMJ</b>      |
| <b>APPROVED BY: RMH</b>   |
| <b>SHEET: 1 OF 1</b>      |

**District I**  
1625 N. French Dr., Hobbs, NM 88240  
Phone:(575) 393-6161 Fax:(575) 393-0720  
**District II**  
811 S. First St., Artesia, NM 88210  
Phone:(575) 748-1283 Fax:(575) 748-9720  
**District III**  
1000 Rio Brazos Rd., Aztec, NM 87410  
Phone:(505) 334-6178 Fax:(505) 334-6170  
**District IV**  
1220 S. St Francis Dr., Santa Fe, NM 87505  
Phone:(505) 476-3470 Fax:(505) 476-3482

**State of New Mexico**  
**Energy, Minerals and Natural Resources**  
**Oil Conservation Division**  
**1220 S. St Francis Dr.**  
**Santa Fe, NM 87505**

Form APD Comments

Permit 230396

**PERMIT COMMENTS**

|   |   |
|---|---|
| Operator Name and Address:<br>APACHE CORP [873]<br>303 Veterans Airpark Lane<br>Midland, TX 79705 | API Number:<br>30-025-43529               |
|   | Well:<br>WEST BLINEBRY DRINKARD UNIT #180 |

|            |         |              |
|------------|---------|--------------|
| Created By | Comment | Comment Date |
|------------|---------|--------------|

**District I**  
1625 N. French Dr., Hobbs, NM 88240  
Phone:(575) 393-8161 Fax:(575) 393-0720  
**District II**  
811 S. First St., Artesia, NM 88210  
Phone:(575) 748-1283 Fax:(575) 748-9720  
**District III**  
1000 Rio Brazos Rd., Aztec, NM 87410  
Phone:(505) 334-8178 Fax:(505) 334-6170  
**District IV**  
1220 S. St Francis Dr., Santa Fe, NM 87505  
Phone:(505) 476-3470 Fax:(505) 476-3482

**State of New Mexico**  
**Energy, Minerals and Natural Resources**  
**Oil Conservation Division**  
**1220 S. St Francis Dr.**  
**Santa Fe, NM 87505**

Form APD Conditions

Permit 230396

**PERMIT CONDITIONS OF APPROVAL**

|   |   |
|---|---|
| Operator Name and Address:<br>APACHE CORP [873]<br>303 Veterans Airpark Lane<br>Midland, TX 79705 | API Number:<br>30-025-43529               |
|   | Well:<br>WEST BLINEBRY DRINKARD UNIT #180 |

| OCD Reviewer | Condition  |
|--------------|--|
| pkautz       | Once the well is spud, to prevent ground water contamination through whole or partial conduits from the surface, the operator shall drill without interruption through the fresh water zone or zones and shall immediately set in cement the water protection string   |
| pkautz       | If using a pit for drilling and completion operations, must have an approved pit from prior to spudding the well.  |
| pkautz       | SURFACE & PRODUCTION CASING - Cement must circulate to surface   |
| pkautz       | If cement does not circulate to surface, must run temperature survey or other log to determine top of cement   |
| pkautz       | Surface casing must be set 25' below top of Rustler Anhydrite in order to seal off protectable water   |
| pkautz       | Operator shall notify appropriate District office when setting conductor pipe.   |
| pkautz       | The Operator is to notify NMOCB by sundry (Form C-103) within ten (10) days of spudding a well.  |
| pkautz       | It is the operator's responsibility to monitor cancellation dates of approved APDs.  |
| pkautz       | If an APD expires and if site construction has occurred, site remediation is required.   |
| pkautz       | Must notify OCD Hobbs Office if lost circulation is encountered at 575-370-3186  |
| pkautz       | 1) Must notify OCD Hobbs Office prior to running Stage Tool at 575-370-3186 2) If using Stage Tool on Surface casing, Stage Tool must be set greater than 350' from surface and a minimum of 200 feet above surface shoe. 3) When using a Stage Tool on Intermediate or Production Casing Stage must be a minimum of 50 feet below previous casing shoe. |
| pkautz       | Submit Gas Capture Plan form prior to spudding or initiating recompletion operations   |