

District I
 1625 N. French Dr., Hobbs, NM 88240
 Phone:(575) 393-6161 Fax:(575) 393-0720
District II
 811 S. First St., Artesia, NM 88210
 Phone:(575) 749-1283 Fax:(575) 748-9720
District III
 1000 Rio Brazos Rd., Aztec, NM 87410
 Phone:(505) 334-6178 Fax:(505) 334-6170
District IV
 1220 S. St Francis Dr., Santa Fe, NM 87505
 Phone:(505) 476-3470 Fax:(505) 476-3462

State of New Mexico
Energy, Minerals and Natural Resources
Oil Conservation Division
1220 S. St Francis Dr.
Santa Fe, NM 87505

Form C-101
 August 1, 2011
 Permit 231682

APPLICATION FOR PERMIT TO DRILL, RE-ENTER, DEEPEN, PLUGBACK, OR ADD A ZONE

1. Operator Name and Address OCCIDENTAL PERMIAN LTD PO Box 4294 Houston, TX 77210		2. OGRID Number 157984
		3. API Number 30-025-43580
4. Property Code 19520	5. Property Name NORTH HOBBS G/SA UNIT	6. Well No. 686

7. Surface Location

UL - Lot L	Section 24	Township 18S	Range 37E	Lot Idn L	Feet From 2119	N/S Line S	Feet From 1308	E/W Line W	County Lea
---------------	---------------	-----------------	--------------	--------------	-------------------	---------------	-------------------	---------------	---------------

8. Proposed Bottom Hole Location

UL - Lot K	Section 24	Township 18S	Range 37E	Lot Idn K	Feet From 1679	N/S Line S	Feet From 2607	E/W Line W	County Lea
---------------	---------------	-----------------	--------------	--------------	-------------------	---------------	-------------------	---------------	---------------

9. Pool Information

HOBBS;GRAYBURG-SAN ANDRES	31920
---------------------------	-------

Additional Well Information

11. Work Type New Well	12. Well Type OIL	13. Cable/Rotary	14. Lease Type State	15. Ground Level Elevation 3673
16. Multiple N	17. Proposed Depth 5450	18. Formation San Andres	19. Contractor	20. Spud Date 4/1/2017
Depth to Ground water		Distance from nearest fresh water well		Distance to nearest surface water

We will be using a closed-loop system in lieu of lined pits

21. Proposed Casing and Cement Program

Type	Hole Size	Casing Size	Casing Weight/ft	Setting Depth	Sacks of Cement	Estimated TOC
Surf	12.25	9.625	36	1700	690	0
Prod	8.75	7	26	5450	1000	0

Casing/Cement Program: Additional Comments

--

22. Proposed Blowout Prevention Program

Type	Working Pressure	Test Pressure	Manufacturer
Annular	5000	2100	

23. I hereby certify that the information given above is true and complete to the best of my knowledge and belief. I further certify I have complied with 19.15.14.9 (A) NMAC <input checked="" type="checkbox"/> and/or 19.15.14.9 (B) NMAC <input checked="" type="checkbox"/> , if applicable. Signature: Printed Name: Electronically filed by KELLEY MONTGOMERY Title: Manager Regulatory Email Address: kelley_montgomery@oxy.com Date: 2/6/2017	OIL CONSERVATION DIVISION Approved By: Paul Kautz Title: Geologist Approved Date: 2/7/2017 Expiration Date: 2/7/2019 Conditions of Approval Attached
Phone: 713-366-5716	

District I
1625 N. French Dr., Hobbs, NM 88240
Phone: (575) 393-4161 Fax: (575) 393-0720

District II
811 S. First St., Aramis, NM 88210
Phone: (575) 748-1283 Fax: (575) 748-9720

District III
1000 Rio Brazos Road, Aztec, NM 87410
Phone: (505) 334-4178 Fax: (505) 334-4170

District IV
1220 S. St. Francis Dr., Santa Fe, NM 87505
Phone: (505) 476-3460 Fax: (505) 476-3462

State of New Mexico
Energy, Minerals & Natural Resources Department
OIL CONSERVATION DIVISION
1220 South St. Francis Dr.
Santa Fe, NM 87505

Form C-102
Revised August 1, 2011
Submit one copy to appropriate
District Office

AMENDED REPORT

WELL LOCATION AND ACREAGE DEDICATION PLAT

API Number	Pool Code	Pool Name
Property Code	Property Name NORTH HOBBS G/SA UNIT	Well Number 686
OGRID No.	Operator Name OCCIDENTAL PERMIAN LTD.	Elevation 3673.0'

Surface Location

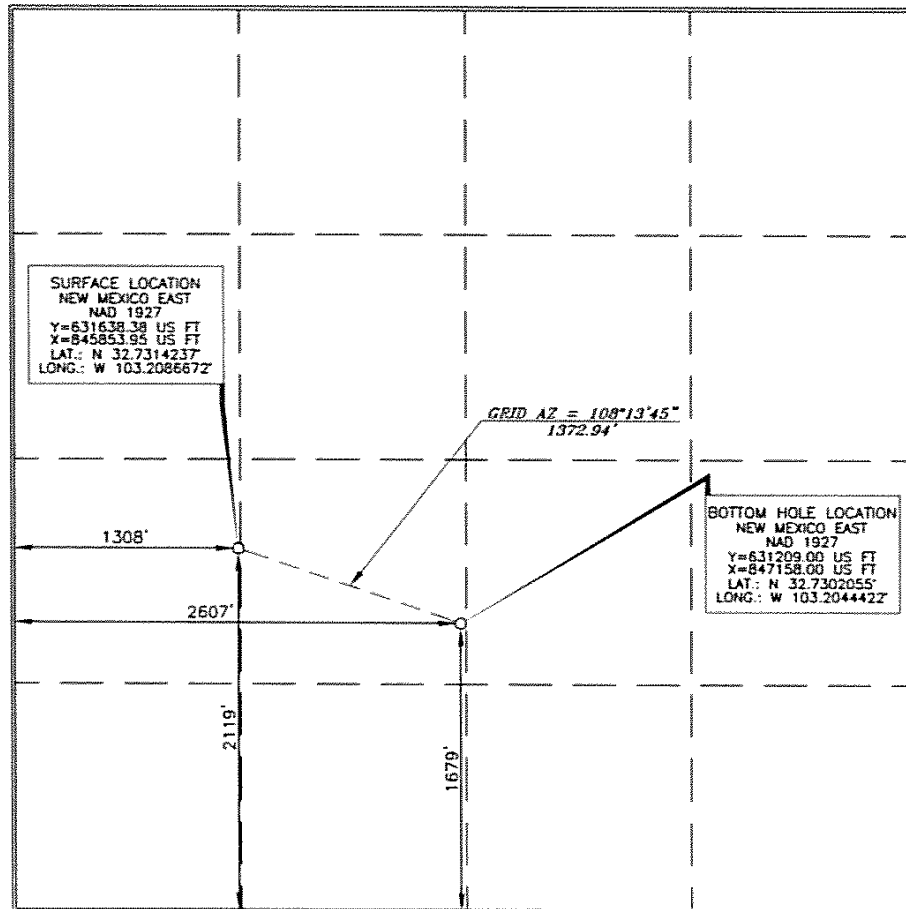
UL or lot no.	Section	Township	Range	Lot Idn	Feet from the	North/South line	Feet from the	East/West line	County
L	24	18 SOUTH	37 EAST, N.M.P.M.		2119'	SOUTH	1308'	WEST	LEA

Bottom Hole Location If Different From Surface

UL or lot no.	Section	Township	Range	Lot Idn	Feet from the	North/South line	Feet from the	East/West line	County
K	24	18 SOUTH	37 EAST, N.M.P.M.		1679'	SOUTH	2607'	WEST	LEA

Dedicated Acres	Joint or Infill	Consolidation Code	Order No.
-----------------	-----------------	--------------------	-----------

No allowable will be assigned to this completion until all interests have been consolidated or a non-standard unit has been approved by the division.



OPERATOR CERTIFICATION

I hereby certify that the information contained herein is true and complete to the best of my knowledge and belief, and that this organization either owns a working interest or unleased mineral interest in the land including the proposed bottom hole location or has a right to drill this well at this location pursuant to a contract with an owner of such a mineral or working interest, or to a voluntary pooling agreement or a compulsory pooling order

hereby entered by the division

April Hood
Signature Date

APRIL HOOD
Printed Name

April - Hood@Ory.com
E-mail Address

SURVEYOR CERTIFICATION

I hereby certify that the well location shown on this plat was plotted from field notes of actual surveys made by me or under my supervision, and that the same is true and correct to the best of my belief.

Tommy J. Asel
Signature and Seal
Professional Surveyor

JANUARY 3, 2017
Date of Survey

Tommy J. Asel
Signature and Seal
Professional Surveyor

15079
Certificate Number

District I
 1625 N. French Dr., Hobbs, NM 88240
 Phone:(575) 393-6161 Fax:(575) 393-0720
District II
 811 S. First St., Artesia, NM 88210
 Phone:(575) 749-1283 Fax:(575) 749-9720
District III
 1000 Rio Brazos Rd., Aztec, NM 87410
 Phone:(505) 334-6178 Fax:(505) 334-6170
District IV
 1220 S. St Francis Dr., Santa Fe, NM 87505
 Phone:(505) 476-3470 Fax:(505) 476-3462

State of New Mexico
Energy, Minerals and Natural Resources
Oil Conservation Division
1220 S. St Francis Dr.
Santa Fe, NM 87505

Form APD Comments

Permit 231682

PERMIT COMMENTS

Operator Name and Address: OCCIDENTAL PERMIAN LTD [157984] PO Box 4294 Houston, TX 77210	API Number: 30-025-43580
	Well: NORTH HOBBS G/SA UNIT #686

Created By	Comment	Comment Date
------------	---------	--------------

District I
 1625 N. French Dr., Hobbs, NM 88240
 Phone:(575) 393-6161 Fax:(575) 393-0720
District II
 811 S. First St., Artesia, NM 88210
 Phone:(575) 749-1283 Fax:(575) 748-9720
District III
 1000 Rio Brazos Rd., Aztec, NM 87410
 Phone:(505) 334-6178 Fax:(505) 334-6170
District IV
 1220 S. St Francis Dr., Santa Fe, NM 87505
 Phone:(505) 476-3470 Fax:(505) 476-3462

State of New Mexico
Energy, Minerals and Natural Resources
Oil Conservation Division
1220 S. St Francis Dr.
Santa Fe, NM 87505

Form APD Conditions

Permit 231682

PERMIT CONDITIONS OF APPROVAL

Operator Name and Address: OCCIDENTAL PERMIAN LTD [157984] PO Box 4294 Houston, TX 77210	API Number: 30-025-43580
	Well: NORTH HOBBS G/SA UNIT #686

OCD Reviewer	Condition
pkautz	Will require a directional survey with the C-104
pkautz	SURFACE & PRODUCTION CASING - Cement must circulate to surface
pkautz	If cement does not circulate to surface, must run temperature survey or other log to determine top of cement
pkautz	Surface casing must be set 25' below top of Rustler Anhydrite in order to seal off protectable water
pkautz	Operator shall notify appropriate District office when setting conductor pipe.
pkautz	The Operator is to notify NMOCD by sundry (Form C-103) within ten (10) days of spudding a well.
pkautz	It is the operator's responsibility to monitor cancellation dates of approved APDs. APD's are good for 2 years and may be extended for one year. Only one 1 year extension will be granted if submitted by C-103 before expiration date. After expiration date or after a 1 year extension must submit new APD.
pkautz	Must notify OCD Hobbs Office if lost circulation is encountered at 575-370-3186
pkautz	Must notify OCD Hobbs Office of any water flows in the Salado Formation at 575-370-3186. Report depth and flow rate
pkautz	1) Must notify OCD Hobbs Office prior to running Stage Tool at 575-370-3186 2) If using Stage Tool on Surface casing, Stage Tool must be set greater than 350' from surface and a minimum of 200 feet above surface shoe. 3) When using a Stage Tool on Intermediate or Production Casing Stage must be a minimum of 50 feet below previous casing shoe
pkautz	Submit Gas Capture Plan form prior to spudding or initiating recompletion operations