

**District I**  
1625 N. French Dr., Hobbs, NM 88240  
Phone:(575) 393-6161 Fax:(575) 393-0720

**District II**  
811 S. First St., Artesia, NM 88210  
Phone:(575) 748-1283 Fax:(575) 748-9720

**District III**  
1000 Rio Brazos Rd., Aztec, NM 87410  
Phone:(505) 334-6178 Fax:(505) 334-6170

**District IV**  
1220 S. St Francis Dr., Santa Fe, NM 87505  
Phone:(505) 476-3470 Fax:(505) 476-3462

**State of New Mexico**  
**Energy, Minerals and Natural Resources**  
**Oil Conservation Division**  
**1220 S. St Francis Dr.**  
**Santa Fe, NM 87505**

Form C-101  
August 1, 2011  
Permit 238557

**APPLICATION FOR PERMIT TO DRILL, RE-ENTER, DEEPEN, PLUGBACK, OR ADD A ZONE**

1. Operator Name and Address CAMBRIAN MANAGEMENT LTD PO BOX 272 MIDLAND , TX 797020272		2. OGRID Number 198688
4. Property Code 318322		3. API Number 30-025-43889
5. Property Name EUMONT 1 STATE		6. Well No. 001

**7. Surface Location**

UL - Lot	Section	Township	Range	Lot Idn	Feet From	N/S Line	Feet From	E/W Line	County
D	1	21S	35E	5	1905	N	660	W	Lea

**8. Proposed Bottom Hole Location**

UL - Lot	Section	Township	Range	Lot Idn	Feet From	N/S Line	Feet From	E/W Line	County
D	1	21S	35E	5	1905	N	660	W	Lea

**9. Pool Information**

EUMONT;YATES-7 RVRS-QUEEN (OIL)	22800
---------------------------------	-------

**Additional Well Information**

11. Work Type New Well	12. Well Type OIL	13. Cable/Rotary	14. Lease Type State	15. Ground Level Elevation 3556
16. Multiple N	17. Proposed Depth 4200	18. Formation Queen	19. Contractor	20. Spud Date 7/31/2017
Depth to Ground water		Distance from nearest fresh water well		Distance to nearest surface water

☒ We will be using a closed-loop system in lieu of lined pits

**21. Proposed Casing and Cement Program**

Type	Hole Size	Casing Size	Casing Weight/ft	Setting Depth	Sacks of Cement	Estimated TOC
Surf	12.25	8.625	36	1400	300	0
Prod	7.875	5.5	15.5	4200	700	0

**Casing/Cement Program: Additional Comments**

--

**22. Proposed Blowout Prevention Program**

Type	Working Pressure	Test Pressure	Manufacturer
Double Ram	3000	3000	Shaffer

23. I hereby certify that the information given above is true and complete to the best of my knowledge and belief. I further certify I have complied with 19.15.14.9 (A) NMAC <input checked="" type="checkbox"/> and/or 19.15.14.9 (B) NMAC <input checked="" type="checkbox"/> if applicable.  Signature: _____ Printed Name: Electronically filed by Kara Wood Title: Accountant Email Address: kwood@basinfinancial.com Date: 7/6/2017	<p style="text-align: center;"><b>OIL CONSERVATION DIVISION</b></p> Approved By: Paul Kautz Title: Geologist Approved Date: 7/7/2017      Expiration Date: 7/7/2019 Conditions of Approval Attached
Phone: 432-682-9572	

DISTRICT I  
1625 N. French Dr., Hobbs, NM 88240  
Phone: (575) 393-6161 Fax: (575) 393-0720

DISTRICT II  
611 S. First St., Artesia, NM 88210  
Phone: (575) 748-1283 Fax: (575) 748-9720

DISTRICT III  
1000 Rio Brazos Rd., Aztec, NM 87410  
Phone: (505) 334-6178 Fax: (505) 334-6170

DISTRICT IV  
1220 S. St. Francis Dr., Santa Fe, NM 87505  
Phone: (505) 476-3460 Fax: (505) 476-3462

State of New Mexico  
Energy, Minerals & Natural Resources Department

OIL CONSERVATION DIVISION  
1220 South St. Frances Dr.  
Santa Fe, NM 87505

Form C-102  
Revised August 1, 2011  
Submit one copy to appropriate  
District Office

☐ AMENDED REPORT

WELL LOCATION AND ACREAGE DEDICATION PLAT

API Number	Pool Code <b>22800</b>	Pool Name <b>Eumont; Yates-Rivers-Queen</b>
Property Code	Property Name <b>EUMONT STATE</b>	Well Number <b>1</b>
OGRID No. <b>198688</b>	Operator Name <b>CAMBRIAN MANAGEMENT, LTD</b>	Elevation <b>3,556'</b>

Surface Location

UL or lot No.	Section	Township	Range	Lot Idn	Feet from the	North/South line	Feet from the	East/West line	County
5	1	21 S	35 E		1905	NORTH	660	WEST	LEA

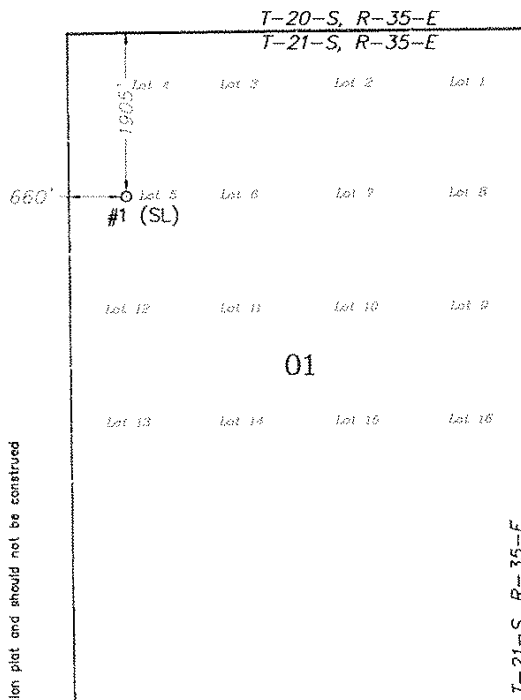
Bottom Hole Location If Different From Surface

UL or lot No.	Section	Township	Range	Lot Idn	Feet from the	North/South line	Feet from the	East/West line	County
Dedicated Acres	Joint or Infill	Consolidation Code	Order No.						

NO ALLOWABLE WILL BE ASSIGNED TO THIS COMPLETION UNTIL ALL INTERESTS HAVE BEEN CONSOLIDATED OR A NON-STANDARD UNIT HAS BEEN APPROVED BY THE DIVISION

Scale: 1"=2000'

Surface Location



(NAD 27)  
Plane Coordinate  
X = 810,156.78  
Y = 553,255.79  
Geodetic (D.M.S.)  
Lat. 32°31'01.15" N  
Long. 103°19'37.72" W  
Geodetic (D.D.)  
Lat. 32.51698509° N  
Long. 103.32714582° W

(NAD 83)  
Plane Coordinate  
X = 851,340.05  
Y = 553,317.70  
Geodetic (D.M.S.)  
Lat. 32°30'58.09" N  
Long. 103°11'38.52" W  
Geodetic (D.D.)  
Lat. 32.516137267° N  
Long. 103.19403395° W

OPERATOR CERTIFICATION

I hereby certify that the information contained herein is true and complete to the best of my knowledge and belief, and that this organization either owns a working interest or undivided mineral interest in the land including the proposed bottom hole location or has a right to drill this well of this location pursuant to a contract with an owner of such a mineral or working interest, or to a voluntary pooling agreement or a compulsory pooling order heretofore entered by the division.

*Denise Jones* 3-31-17  
Signature Date

Denise Jones  
Printed Name  
djones@cambrianmgmt.com  
E-mail Address

SURVEYOR CERTIFICATION

I hereby certify that the well location shown on this plat was plotted from field notes of actual surveys made by me or under my supervision, and that the same is true and correct to the best of my belief.

March 29, 2017

Date of Survey SC

Signature & Seal of Professional Surveyor

04-05-17  
*Lindsay Gyeax*  
LINDSAY GYEA  
NEW MEXICO  
23263  
PROFESSIONAL SURVEYOR

W.O. Num. 198688

Certificate No. Lindsay Gyeax 23263

NOTE:  
1) Plane Coordinates shown herein are Transverse Mercator Grid and Conform to the "New Mexico Coordinate System", New Mexico East Zone, North American Datum of 1983. Elevations are based on the North American Vertical Datum of 1988, unless otherwise noted. Distances shown herein are ground distances. To obtain surface values multiply by a factor of 0.999688.  
2) This is a well location plat and should not be construed as a boundary survey.

**District I**  
1625 N. French Dr., Hobbs, NM 88240  
Phone:(575) 393-6161 Fax:(575) 393-0720

**District II**  
811 S. First St., Artesia, NM 88210  
Phone:(575) 748-1283 Fax:(575) 748-9720

**District III**  
1000 Rio Brazos Rd., Aztec, NM 87410  
Phone:(505) 334-6178 Fax:(505) 334-6170

**District IV**  
1220 S. St Francis Dr., Santa Fe, NM 87505  
Phone:(505) 476-3470 Fax:(505) 476-3462

**State of New Mexico**  
**Energy, Minerals and Natural Resources**  
**Oil Conservation Division**  
**1220 S. St Francis Dr.**  
**Santa Fe, NM 87505**

Form APD Comments

Permit 238557

**PERMIT COMMENTS**

Operator Name and Address: CAMBRIAN MANAGEMENT LTD [198688] PO BOX 272 MIDLAND , TX 797020272		API Number: 30-025-43889
		Well: EUMONT 1 STATE #001

Created By	Comment	Comment Date
------------	---------	--------------

**District I**

1625 N. French Dr., Hobbs, NM 88240  
 Phone:(575) 393-6161 Fax:(575) 393-0720

**District II**

811 S. First St., Artesia, NM 88210  
 Phone:(575) 748-1283 Fax:(575) 748-9720

**District III**

1000 Rio Brazos Rd., Aztec, NM 87410  
 Phone:(505) 334-6178 Fax:(505) 334-6170

**District IV**

1220 S. St Francis Dr., Santa Fe, NM 87505  
 Phone:(505) 476-3470 Fax:(505) 476-3462

Form APD Conditions

Permit 238557

**State of New Mexico**  
**Energy, Minerals and Natural Resources**  
**Oil Conservation Division**  
**1220 S. St Francis Dr.**  
**Santa Fe, NM 87505**

**PERMIT CONDITIONS OF APPROVAL**

Operator Name and Address: CAMBRIAN MANAGEMENT LTD [198688] PO BOX 272 MIDLAND , TX 797020272	API Number: 30-025-43889
	Well: EUMONT 1 STATE #001

OCD Reviewer	Condition
pkautz	Once the well is spud, to prevent ground water contamination through whole or partial conduits from the surface, the operator shall drill without interruption through the fresh water zone or zones and shall immediately set in cement the water protection string
pkautz	SURFACE & PRODUCTION CASING - Cement must circulate to surface
pkautz	If cement does not circulate to surface, must run temperature survey or other log to determine top of cement
pkautz	Surface casing must be set 25' below top of Rustler Anhydrite in order to seal off protectable water
pkautz	Only Fresh Water and Air are Valid Drilling Fluids for Surface Casing
pkautz	Operator shall notify appropriate District office when setting conductor pipe.
pkautz	1)- The Operator is to notify NMOCDC by sundry (Form C-103) within ten (10) days of the well being spud 2)- Drilling Sundries Form C-103 (Casing and Cement test are to be submitted within 10 days 3)- Completion Reports & Logs are to be submitted within 20 days 4)- Deviation / Directional Drill Survey are to be filed with or prior to C-104
pkautz	It is the operator's responsibility to monitor cancellation dates of approved APDs. APD's are good for 2 years and may be extended for one year. Only one 1 year extension will be granted if submitted by C-103 before expiration date. After expiration date or after a 1 year extension must submit new APD.
pkautz	If an APD expires and if site construction has occurred, site remediation is required.
pkautz	Water flows - Must notify OCD Hobbs Office of any water flows in the Salado Formation at 575-370-3186. Report depth and flow rate
pkautz	Lost Circulation - Must notify OCD Hobbs Office if lost circulation is encountered at 575-370-3186
pkautz	Stage Tool - 1) Must notify OCD Hobbs Office prior to running Stage Tool at 575-370-3186 2) If using Stage Tool on Surface casing, Stage Tool must be set greater than 350' from surface and a minimum of 200 feet above surface shoe. 3) When using a Stage Tool on Intermediate or Production Casing Stage must be a minimum of 50 feet below previous casing shoe.
pkautz	Operator to Submit Gas Capture Plan form prior spud