

District I
1625 N. French Dr., Hobbs, NM 88240
Phone:(575) 393-6161 Fax:(575) 393-0720

District II
811 S. First St., Artesia, NM 88210
Phone:(575) 748-1283 Fax:(575) 748-9720

District III
1000 Rio Brazos Rd., Aztec, NM 87410
Phone:(505) 334-6178 Fax:(505) 334-6170

District IV
1220 S. St Francis Dr., Santa Fe, NM 87505
Phone:(505) 476-3470 Fax:(505) 476-3462

Form C-101
August 1, 2011

Permit 242995

State of New Mexico
Energy, Minerals and Natural Resources
Oil Conservation Division
1220 S. St Francis Dr.
Santa Fe, NM 87505

APPLICATION FOR PERMIT TO DRILL, RE-ENTER, DEEPEN, PLUGBACK, OR ADD A ZONE

1. Operator Name and Address ONEENERGY PARTNERS OPERATING, LLC 2929 Allen Parkway Houston , TX 77019		2. OGRID Number 372031
		3. API Number 30-025-44107
4. Property Code 319741	5. Property Name BRANDY FEE WCB	6. Well No. 001H

7. Surface Location

UL - Lot O	Section 18	Township 25S	Range 36E	Lot Idn O	Feet From 380	N/S Line S	Feet From 2260	E/W Line E	County Lea
---------------	---------------	-----------------	--------------	--------------	------------------	---------------	-------------------	---------------	---------------

8. Proposed Bottom Hole Location

UL - Lot B	Section 18	Township 25S	Range 36E	Lot Idn B	Feet From 380	N/S Line N	Feet From 2260	E/W Line E	County Lea
---------------	---------------	-----------------	--------------	--------------	------------------	---------------	-------------------	---------------	---------------

9. Pool Information

JAL;WOLFCAMP, WEST	33813
--------------------	-------

Additional Well Information

11. Work Type New Well	12. Well Type OIL	13. Cable/Rotary	14. Lease Type Private	15. Ground Level Elevation 3122
16. Multiple N	17. Proposed Depth 15737	18. Formation Wolfcamp	19. Contractor	20. Spud Date 1/15/2018
Depth to Ground water		Distance from nearest fresh water well		Distance to nearest surface water

We will be using a closed-loop system in lieu of lined pits

21. Proposed Casing and Cement Program

Type	Hole Size	Casing Size	Casing Weight/ft	Setting Depth	Sacks of Cement	Estimated TOC
Surf	17.5	13.375	54.5	900	660	0
Int1	12.25	9.625	40	4950	1610	0
Int2	8.75	7	29	10839	804	0
Prod	6.125	4.5	13.5	15737	206	10739

Casing/Cement Program: Additional Comments

--

22. Proposed Blowout Prevention Program

Type	Working Pressure	Test Pressure	Manufacturer
Double Ram	3000	5000	

<p>23. I hereby certify that the information given above is true and complete to the best of my knowledge and belief. I further certify I have complied with 19.15.14.9 (A) NMAC <input checked="" type="checkbox"/> and/or 19.15.14.9 (B) NMAC <input type="checkbox"/>, if applicable.</p> <p>Signature:</p> <p>Printed Name: Electronically filed by David Ramsden-Wood</p> <p>Title: President & Chief Operating Officer</p> <p>Email Address: drw@oneenergypartners.com</p> <p>Date: 10/12/2017</p>	<p>OIL CONSERVATION DIVISION</p> <p>Approved By: Paul Kautz</p> <p>Title: Geologist</p> <p>Approved Date: 10/15/2017</p> <p>Expiration Date: 10/15/2019</p> <p>Conditions of Approval Attached</p>
--	---

District I
1625 N. French Dr., Hobbs, NM 88240
Phone: (575) 393-6161 Fax: (575) 393-0720

District II
811 S. First St., Artesia, NM 88210
Phone: (575) 748-1283 Fax: (575) 748-9720

District III
1000 Rio Brazos Road, Aztec, NM 87410
Phone: (505) 334-6178 Fax: (505) 334-6170

District IV
1220 S. St. Francis Dr., Santa Fe, NM 87505
Phone: (505) 476-3460 Fax: (505) 476-3462

State of New Mexico
Energy, Minerals & Natural Resources Department
OIL CONSERVATION DIVISION
1220 South St. Francis Dr.
Santa Fe, NM 87505

Form C-102
Revised August 1, 2011
Submit one copy to appropriate
District Office

AMENDED REPORT

WELL LOCATION AND ACREAGE DEDICATION PLAT

¹ API Number		² Pool Code WC		³ Pool Name Wildcat; Wolfcamp	
⁴ Property Code		⁵ Property Name BANDY FEE WCB			⁶ Well Number 1H
⁷ OGRID No. 372031		⁸ Operator Name OneEnergy Partners Operating LLC			⁹ Elevation 3122.4'

¹⁰ Surface Location

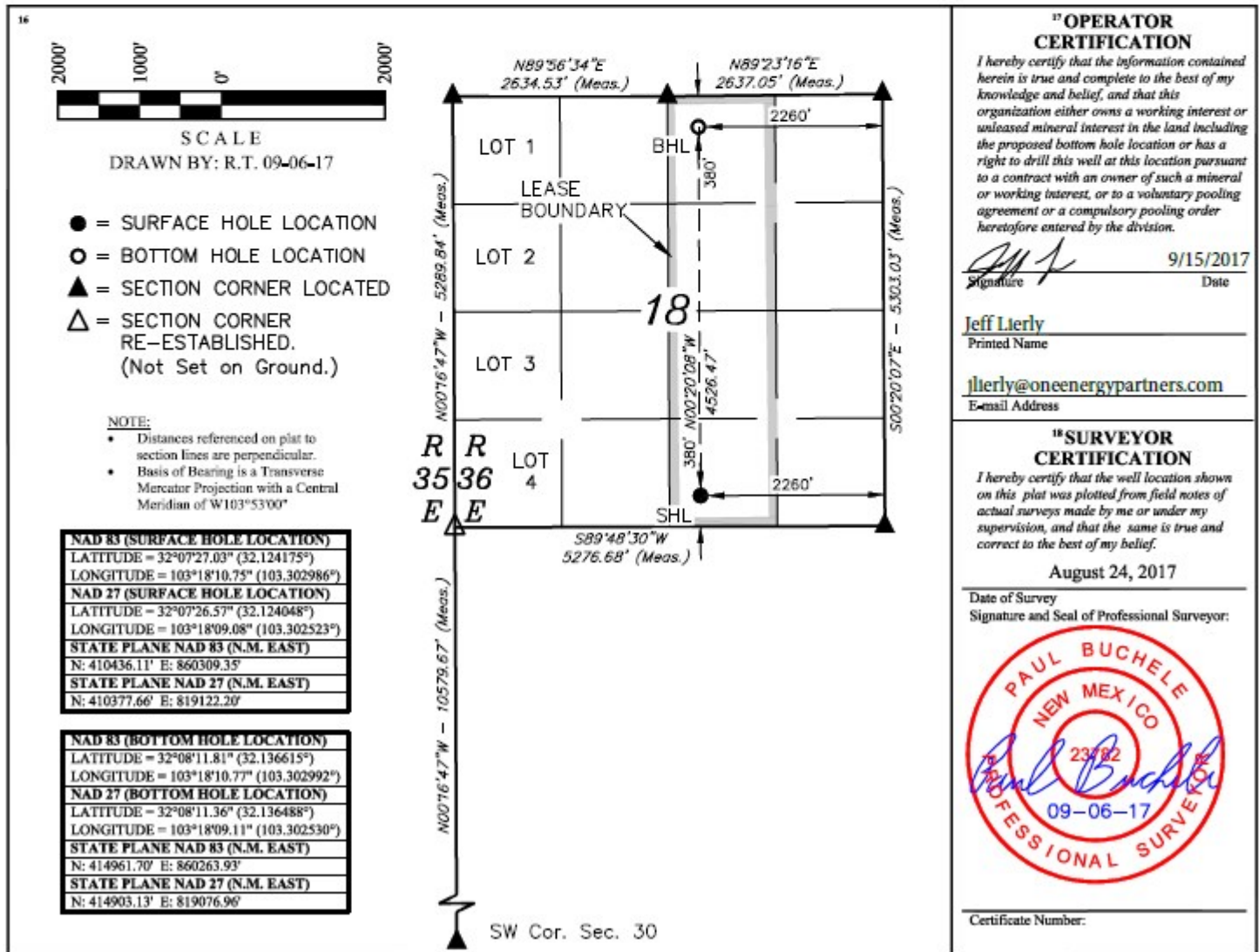
UL or lot no.	Section	Township	Range	Lot Idn	Feet from the	North/South line	Feet from the	East/West line	County
O	18	25S	36E		380	SOUTH	2260	EAST	LEA

¹¹ Bottom Hole Location If Different From Surface

UL or lot no.	Section	Township	Range	Lot Idn	Feet from the	North/South line	Feet from the	East/West line	County
B	18	25S	36E		380	NORTH	2260	EAST	LEA

¹² Dedicated Acres 160	¹³ Joint or Infill	¹⁴ Consolidation Code	¹⁵ Order No.
--------------------------------------	-------------------------------	----------------------------------	-------------------------

No allowable will be assigned to this completion until all interests have been consolidated or a non-standard unit has been approved by the division.



District I
1625 N. French Dr., Hobbs, NM 88240
Phone:(575) 393-6161 Fax:(575) 393-0720

District II
811 S. First St., Artesia, NM 88210
Phone:(575) 748-1283 Fax:(575) 748-9720

District III
1000 Rio Brazos Rd., Aztec, NM 87410
Phone:(505) 334-6178 Fax:(505) 334-6170

District IV
1220 S. St Francis Dr., Santa Fe, NM 87505
Phone:(505) 476-3470 Fax:(505) 476-3462

State of New Mexico
Energy, Minerals and Natural Resources
Oil Conservation Division
1220 S. St Francis Dr.
Santa Fe, NM 87505

Form APD Comments

Permit 242995

PERMIT COMMENTS

Operator Name and Address: ONEENERGY PARTNERS OPERATING, LLC [372031] 2929 Allen Parkway Houston , TX 77019	API Number: 30-025-44107
	Well: BRANDY FEE WCB #001H

Created By	Comment	Comment Date
------------	---------	--------------

District I
 1625 N. French Dr., Hobbs, NM 88240
 Phone:(575) 393-6161 Fax:(575) 393-0720

District II
 811 S. First St., Artesia, NM 88210
 Phone:(575) 748-1283 Fax:(575) 748-9720

District III
 1000 Rio Brazos Rd., Aztec, NM 87410
 Phone:(505) 334-6178 Fax:(505) 334-6170

District IV
 1220 S. St Francis Dr., Santa Fe, NM 87505
 Phone:(505) 476-3470 Fax:(505) 476-3462

State of New Mexico
Energy, Minerals and Natural Resources
Oil Conservation Division
1220 S. St Francis Dr.
Santa Fe, NM 87505

PERMIT CONDITIONS OF APPROVAL

Operator Name and Address: ONEENERGY PARTNERS OPERATING, LLC [372031] 2929 Allen Parkway Houston , TX 77019	API Number: 30-025-44107
	Well: BRANDY FEE WCB #001H

OCD Reviewer	Condition
pkautz	The operator shall keep a copy of the approved form C-101 and a copy of these conditions of approval at the well site
pkautz	Will require a directional survey with the C-104
pkautz	Once the well is spud, to prevent ground water contamination through whole or partial conduits from the surface, the operator shall drill without interruption through the fresh water zone or zones and shall immediately set in cement the water protection string
pkautz	Pit construction and closure must satisfy all requirements of your approved plan.
pkautz	If using a pit for drilling and completion operations, must have an approved pit from prior to spudding the well.
pkautz	1) SURFACE & INTERMEDIATE1 CASING - Cement must circulate to surface -- 2) INTERMEDIATE2 CASING - Cement must tie back into intermediate1 casing -- 3) PRODUCTION CASING - Cement must tie back into intermediate2 casing --
pkautz	If cement does not circulate to surface, must run temperature survey or other log to determine top of cement
pkautz	Surface casing must be set 25' below top of Rustler Anhydrite in order to seal off protectable water
pkautz	Operator shall notify appropriate District office when setting conductor pipe.
pkautz	1)- The Operator is to notify NMOCD by sundry (Form C-103) within ten (10) days of the well being spud 2)- Drilling Sundries Form C-103 (Casing and Cement test are to be submitted within 10 days 3)- Completion Reports & Logs are to be submitted within 20 days 4)- Deviation / Directional Drill Survey are to be filed with or prior to C-104
pkautz	It is the operator's responsibility to monitor cancellation dates of approved APDs. APD's are good for 2 years and may be extended for one year. Only one 1 year extension will be granted if submitted by C-103 before expiration date. After expiration date or after a 1 year extension must submit new APD.
pkautz	If an APD expires and if site construction has occurred, site remediation is required.
pkautz	Lost Circulation - Must notify OCD Hobbs Office if lost circulation is encountered at 575-370-3186
pkautz	Stage Tool - 1) Must notify OCD Hobbs Office prior to running Stage Tool at 575-370-3186 2) If using Stage Tool on Surface casing, Stage Tool must be set greater than 350' from surface and a minimum of 200 feet above surface shoe. 3) When using a Stage Tool on Intermediate or Production Casing Stage must be a minimum of 50 feet below previous casing shoe.
pkautz	Gas Capture Plan - Operator to Submit Gas Capture Plan ASAP.