

District I
1625 N. French Dr., Hobbs, NM 88240
Phone:(575) 393-6161 Fax:(575) 393-0720

District II
811 S. First St., Artesia, NM 88210
Phone:(575) 748-1283 Fax:(575) 748-9720

District III
1000 Rio Brazos Rd., Aztec, NM 87410
Phone:(505) 334-6178 Fax:(505) 334-6170

District IV
1220 S. St Francis Dr., Santa Fe, NM 87505
Phone:(505) 476-3470 Fax:(505) 476-3462

State of New Mexico
Energy, Minerals and Natural Resources
Oil Conservation Division
1220 S. St Francis Dr.
Santa Fe, NM 87505

Form C-101
August 1, 2011
Permit 243708

APPLICATION FOR PERMIT TO DRILL, RE-ENTER, DEEPEN, PLUGBACK, OR ADD A ZONE

1. Operator Name and Address OXY USA WTP LIMITED PARTNERSHIP PO Box 4294 Houston, TX 77210		2. OGRID Number 192463
4. Property Code 318404		3. API Number 30-015-44518
5. Property Name TURKEY TRACK 4 3 STATE		6. Well No. 034H

7. Surface Location

UL - Lot	Section	Township	Range	Lot Idn	Feet From	N/S Line	Feet From	E/W Line	County
L	4	19S	29E	L	1625	S	360	W	Eddy

8. Proposed Bottom Hole Location

UL - Lot	Section	Township	Range	Lot Idn	Feet From	N/S Line	Feet From	E/W Line	County
P	3	19S	29E	P	380	S	180	E	Eddy

9. Pool Information

TURKEY TRACK;BONE SPRING	60660
--------------------------	-------

Additional Well Information

11. Work Type New Well	12. Well Type OIL	13. Cable/Rotary	14. Lease Type State	15. Ground Level Elevation 3405
16. Multiple N	17. Proposed Depth 18920	18. Formation 3rd Bone Spring Sand	19. Contractor	20. Spud Date 1/1/2019
Depth to Ground water		Distance from nearest fresh water well		Distance to nearest surface water

☒ We will be using a closed-loop system in lieu of lined pits

21. Proposed Casing and Cement Program

Type	Hole Size	Casing Size	Casing Weight/ft	Setting Depth	Sacks of Cement	Estimated TOC
Surf	17.5	13.375	54.5	400	401	0
Int1	12.25	9.625	36	3000	923	0
Prod	8.75	5.5	20	18920	3372	2500

Casing/Cement Program: Additional Comments

Proposed Mud Program: 0-400' Water-Based Mud - 400-3000' Brine - 3000-8282' Water-Based Mud - 8282'-TD Oil Based Mud. BOP Program: 13-5/8" 5M three ram stack w/ 5M annular preventer, 5M choke manifold. Additional information will be sent along with the H2S and Gas Capture Plan.
--

22. Proposed Blowout Prevention Program

Type	Working Pressure	Test Pressure	Manufacturer
Annular	5000	5000	
Double Ram	5000	5000	

23. I hereby certify that the information given above is true and complete to the best of my knowledge and belief. I further certify I have complied with 19.15.14.9 (A) NMAC <input checked="" type="checkbox"/> and/or 19.15.14.9 (B) NMAC <input checked="" type="checkbox"/> if applicable. Signature:	OIL CONSERVATION DIVISION
Printed Name: Electronically filed by KELLEY MONTGOMERY	Approved By: Raymond Podany
Title: Manager Regulatory	Title: Geologist
Email Address: kelley_montgomery@oxy.com	Approved Date: 11/3/2017 Expiration Date: 11/3/2019
Date: 10/31/2017 Phone: 713-366-5716	Conditions of Approval Attached

District I
1625 N. French Dr., Hobbs, NM 88240
Phone: (575) 393-6161 Fax: (575) 393-0720
District II
811 S. First St., Artesia, NM 88210
Phone: (575) 748-1283 Fax: (575) 748-0720
District III
1000 Rio Grande Road, Aztec, NM 87410
Phone: (505) 334-6178 Fax: (505) 334-6170
District IV
1220 S. St. Francis Dr., Santa Fe, NM 87505
Phone: (505) 476-3460 Fax: (505) 476-3462

State of New Mexico
Energy, Minerals & Natural Resources Department
OIL CONSERVATION DIVISION
1220 South St. Francis Dr.
Santa Fe, NM 87505

Form C-102
Revised August 1, 2011
Submit one copy to appropriate
District Office

☐ AMENDED REPORT

WELL LOCATION AND ACREAGE DEDICATION PLAT

API Number 30-015-	Pool Code 60660	Pool Name Turkey Track ; Bone Spring
Property Code 318404	Property Name TURKEY TRACK "4-3" STATE	Well Number 34H
OGRID No. 192463	Operator Name OXY USA WTP LP	Elevation 3404.8'

Surface Location

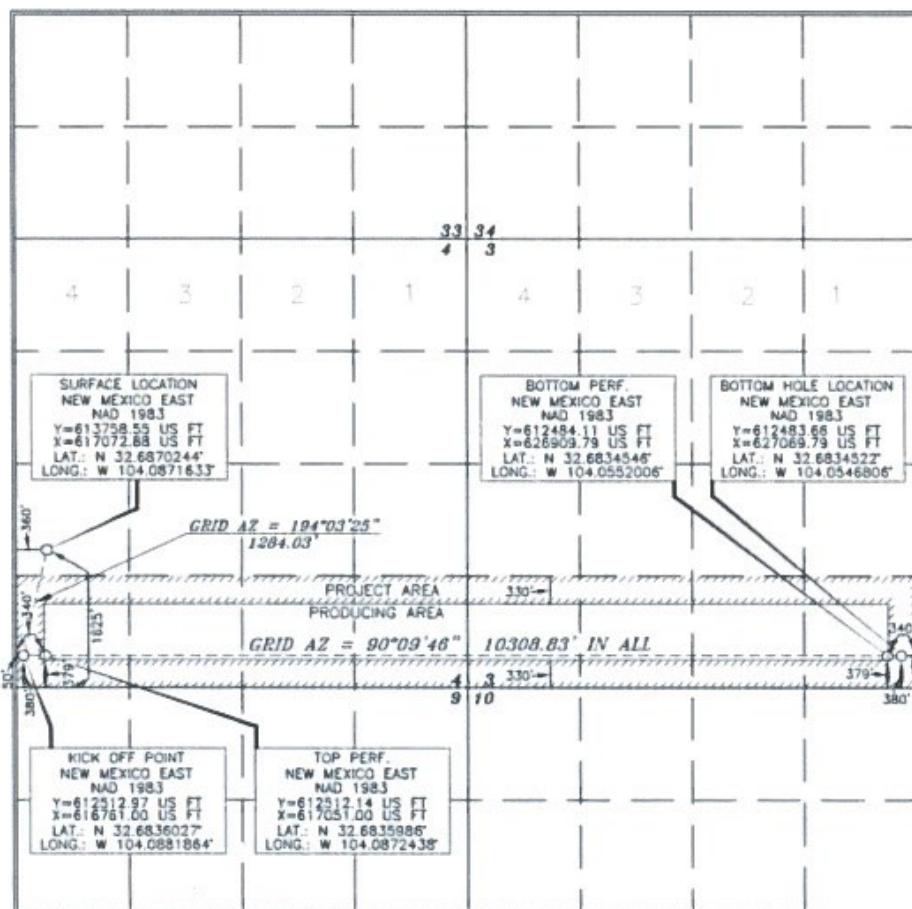
UL or lot no.	Section	Township	Range	Lot Idn	Feet from the	North/South line	Feet from the	East West line	County
L	4	19 SOUTH	29 EAST, N.M.P.M.		1625'	SOUTH	360'	WEST	EDDY

Bottom Hole Location If Different From Surface

UL or lot no.	Section	Township	Range	Lot Idn	Feet from the	North/South line	Feet from the	East West line	County
P	3	19 SOUTH	29 EAST, N.M.P.M.		380'	SOUTH	180'	EAST	EDDY

Dedicated Acres 3.20	Joint or Infill Y	Consolidation Code	Order No.
--------------------------------	-----------------------------	--------------------	-----------

No allowable will be assigned to this completion until all interests have been consolidated or a non-standard unit has been approved by the division.



OPERATOR CERTIFICATION

I hereby certify that the information contained herein is true and complete to the best of my knowledge and belief, and that the organization either owns a working interest or unleased mineral interest in the land including the proposed bottom hole location or has a right to drill this well at this location pursuant to a contract with an owner of such a mineral or working interest, or to a voluntary pooling agreement or a compulsory pooling order heretofore entered by the division.

[Signature] **10/31/17**
Signature Date
Jana Mendiola
Printed Name
jana.mendiola@oxy.com
Email Address

SURVEYOR CERTIFICATION

I hereby certify that the well location shown on this plat was plotted from actual surveys made by me or under my supervision and that the same is true and correct to the best of my belief.

15079
JULY 17 2017
Date of Survey
Signature and Seal of Professional Surveyor

[Signature] **10/4/2017**
Certificate Number 15079

WD# 170717WL-b (NA)

District I

1625 N. French Dr., Hobbs, NM 88240
Phone:(575) 393-6161 Fax:(575) 393-0720

District II

811 S. First St., Artesia, NM 88210
Phone:(575) 748-1283 Fax:(575) 748-9720

District III

1000 Rio Brazos Rd., Aztec, NM 87410
Phone:(505) 334-6178 Fax:(505) 334-6170

District IV

1220 S. St Francis Dr., Santa Fe, NM 87505
Phone:(505) 476-3470 Fax:(505) 476-3462

Form APD Comments

Permit 243708

State of New Mexico
Energy, Minerals and Natural Resources
Oil Conservation Division
1220 S. St Francis Dr.
Santa Fe, NM 87505

PERMIT COMMENTS

Operator Name and Address: OXY USA WTP LIMITED PARTNERSHIP [192463] PO Box 4294 Houston, TX 77210	API Number: 30-015-44518
	Well: TURKEY TRACK 4 3 STATE #034H

Created By	Comment	Comment Date
davidstewart	Top Perforated Interval: 379 FSL 340 FWL M4-19S-29E - Lat: 32.6835986 Long: 104.0872438 Bottom Perforated Interval: 379 FSL 340 FEL P 3-19S-29E - Lat: 32.6834546 Long: 104.0552006 A closed loop system will be utilized consisting of above ground steel tanks and haul-off bins. Disposal of liquids, drilling fluids and cuttings will be disposed of at an approved facility.	10/31/2017
davidstewart	OXY requests the option to contract a Surface Rig to drill, set surface casing, and cement for this well. If the timing between rigs is such that OXY would not be able to preset surface, the Primary Rig will MIRU and drill the well in its entirety per the APD. Additional information on the spudder will be sent.	10/31/2017

District I
1625 N. French Dr., Hobbs, NM 88240
Phone:(575) 393-6161 Fax:(575) 393-0720
District II
811 S. First St., Artesia, NM 88210
Phone:(575) 748-1283 Fax:(575) 748-9720
District III
1000 Rio Brazos Rd., Aztec, NM 87410
Phone:(505) 334-6178 Fax:(505) 334-6170
District IV
1220 S. St Francis Dr., Santa Fe, NM 87505
Phone:(505) 476-3470 Fax:(505) 476-3462

State of New Mexico
Energy, Minerals and Natural Resources
Oil Conservation Division
1220 S. St Francis Dr.
Santa Fe, NM 87505

Form APD Conditions

Permit 243708

PERMIT CONDITIONS OF APPROVAL

Operator Name and Address: OXY USA WTP LIMITED PARTNERSHIP [192463] PO Box 4294 Houston, TX 77210		API Number: 30-015-44518
		Well: TURKEY TRACK 4 3 STATE #034H
OCD Reviewer	Condition	
RPodany	Will require a directional survey with the C-104	
RPodany	Cement is required to circulate on both surface and intermediate1 strings of casing	