

District I
1625 N. French Dr., Hobbs, NM 88240
Phone:(575) 393-6161 Fax:(575) 393-0720

District II
811 S. First St., Artesia, NM 88210
Phone:(575) 748-1283 Fax:(575) 748-9720

District III
1000 Rio Brazos Rd., Aztec, NM 87410
Phone:(505) 334-6178 Fax:(505) 334-6170

District IV
1220 S. St Francis Dr., Santa Fe, NM 87505
Phone:(505) 476-3470 Fax:(505) 476-3462

State of New Mexico
Energy, Minerals and Natural Resources
Oil Conservation Division
1220 S. St Francis Dr.
Santa Fe, NM 87505

Form C-101
August 1, 2011
Permit 251262

APPLICATION FOR PERMIT TO DRILL, RE-ENTER, DEEPEN, PLUGBACK, OR ADD A ZONE

1. Operator Name and Address APACHE CORPORATION 303 Veterans Airpark Ln Midland, TX 79705		2. OGRID Number 873
4. Property Code 321281		3. API Number 30-015-44905
5. Property Name PALMILLO 26 STATE COM		6. Well No. 313H

7. Surface Location

UL - Lot	Section	Township	Range	Lot Idn	Feet From	N/S Line	Feet From	E/W Line	County
I	26	19S	28E	I	1675	S	275	E	Eddy

8. Proposed Bottom Hole Location

UL - Lot	Section	Township	Range	Lot Idn	Feet From	N/S Line	Feet From	E/W Line	County
L	25	19S	28E	L	2118	S	50	W	Eddy

9. Pool Information

WINCHESTER;BONE SPRING	65010
------------------------	-------

Additional Well Information

11. Work Type New Well	12. Well Type OIL	13. Cable/Rotary	14. Lease Type State	15. Ground Level Elevation 3339
16. Multiple N	17. Proposed Depth 13345	18. Formation 3rd Bone Spring Sand	19. Contractor	20. Spud Date 8/16/2018
Depth to Ground water		Distance from nearest fresh water well		Distance to nearest surface water

☒ We will be using a closed-loop system in lieu of lined pits

21. Proposed Casing and Cement Program

Type	Hole Size	Casing Size	Casing Weight/ft	Setting Depth	Sacks of Cement	Estimated TOC
Surf	17.5	13.375	48	400	285	0
Int1	12.25	9.625	40	8400	1365	0
Prod	8.75	5.5	17	8860	205	7600
Prod	8.5	5.5	17	13345	840	8860

Casing/Cement Program: Additional Comments

--

22. Proposed Blowout Prevention Program

Type	Working Pressure	Test Pressure	Manufacturer
Annular	3000	3000	
Double Ram	3000	3000	
Annular	5000	5000	
Double Ram	5000	5000	

23. I hereby certify that the information given above is true and complete to the best of my knowledge and belief. I further certify I have complied with 19.15.14.9 (A) NMAC <input checked="" type="checkbox"/> and/or 19.15.14.9 (B) NMAC <input checked="" type="checkbox"/> if applicable. Signature:	OIL CONSERVATION DIVISION
Printed Name: Electronically filed by Bobby Smith	Approved By: Raymond Podany
Title:	Title: Geologist
Email Address: bobby.smith@apachecorp.com	Approved Date: 4/27/2018 Expiration Date: 4/27/2020
Date: 4/24/2018 Phone: 432-818-1020	Conditions of Approval Attached

District I
1625 N. French Dr., Hobbs, NM 88240
Phone: (575) 393-6161 Fax: (575) 393-0720
District II
811 S. First St., Artesia, NM 88210
Phone: (575) 748-1283 Fax: (575) 748-9720
District III
1000 Rio Brazos Road, Aztec, NM 87410
Phone: (505) 334-6178 Fax: (505) 334-6170
District IV
1220 S. St. Francis Dr., Santa Fe, NM 87505
Phone: (505) 476-3460 Fax: (505) 476-3462

State of New Mexico
Energy, Minerals & Natural Resources Department
OIL CONSERVATION DIVISION
1220 South St. Francis Dr.
Santa Fe, NM 87505

Form C-102
Revised August 1, 2011
Submit one copy to appropriate
District Office

☐ AMENDED REPORT

WELL LOCATION AND ACREAGE DEDICATION PLAT

¹ API Number 30-015-	² Pool Code 96413	³ Pool Name PALMILLO; BONESPRING, SW
⁴ Property Code	⁵ Property Name PALMILLO 26 STATE COM	
⁷ GRID NO. 873	⁸ Operator Name APACHE CORPORATION	⁶ Well Number 313H
		⁹ Elevation 3339'

¹⁰ Surface Location

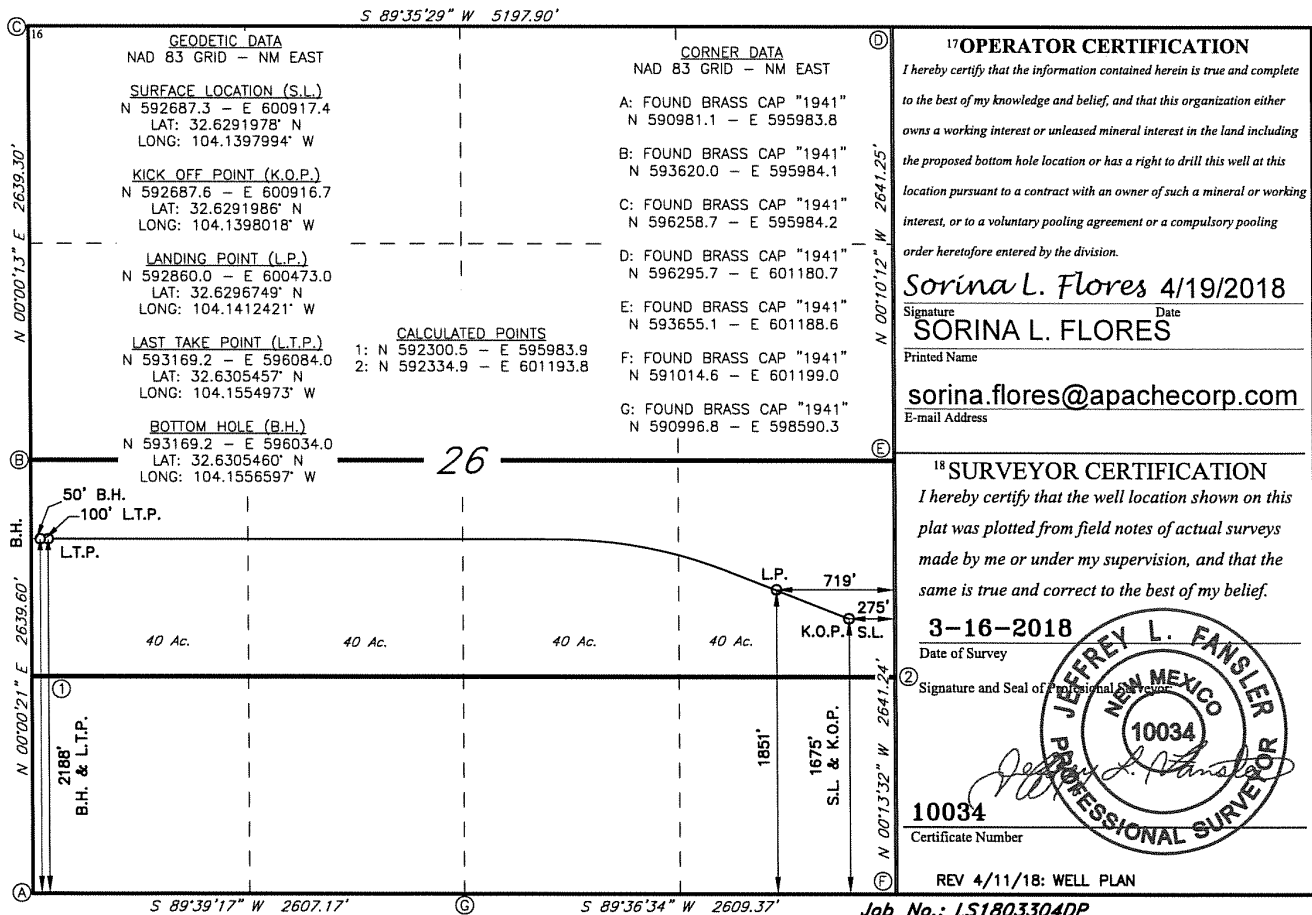
UL or lot no.	Section	Township	Range	Lot Idn	Feet from the	North/South line	Feet From the	East/West line	County
I	26	19S	28E		1675	SOUTH	275	EAST	EDDY

¹¹ Bottom Hole Location If Different From Surface

UL or lot no.	Section	Township	Range	Lot Idn	Feet from the	North/South line	Feet from the	East/West line	County
L	26	19S	28E		2188	SOUTH	50	WEST	EDDY

¹² Dedicated Acres 160	¹³ Joint or Infill	¹⁴ Consolidation Code	¹⁵ Order No.
---	-------------------------------	----------------------------------	-------------------------

No allowable will be assigned to this completion until all interest have been consolidated or a non-standard unit has been approved by the division.



District I
 1625 N. French Dr., Hobbs, NM 88240
 Phone:(575) 393-6161 Fax:(575) 393-0720
District II
 811 S. First St., Artesia, NM 88210
 Phone:(575) 748-1283 Fax:(575) 748-9720
District III
 1000 Rio Brazos Rd., Aztec, NM 87410
 Phone:(505) 334-6178 Fax:(505) 334-6170
District IV
 1220 S. St Francis Dr., Santa Fe, NM 87505
 Phone:(505) 476-3470 Fax:(505) 476-3462

State of New Mexico
Energy, Minerals and Natural Resources
Oil Conservation Division
1220 S. St Francis Dr.
Santa Fe, NM 87505

Form APD Comments
 Permit 251262

PERMIT COMMENTS

Operator Name and Address: APACHE CORPORATION [873] 303 Veterans Airpark Ln Midland, TX 79705		API Number: 30-015-44905
		Well: PALMILLO 26 STATE COM #313H

Created By	Comment	Comment Date
sflores	Apache respectfully request approval to utilize spudder rig to drill & pre-set surf hole section. After drlg surf hole, rig will run csg & cmt following all applicable rules & regulations (19.15.16 NMAC drilling & production). Solids control will be handled entirely on closed loop basis. Wellhead will be installed & tested once 13-3/8" surf csg is cut off & WOC time has been reached. A blind flange with same pressure rating as wellhead will be installed to seal wellbore. Pressure will be monitored with pressure gauge installed on wellhead. A means for intervention will be maintained while dril	4/17/2018
sflores	This well will be a pilot well. Pilot hole depth to 10250' MD/TVD. 3 cmt plugs will be set. Please see attachment for details.	4/24/2018

District I
1625 N. French Dr., Hobbs, NM 88240
Phone:(575) 393-6161 Fax:(575) 393-0720
District II
811 S. First St., Artesia, NM 88210
Phone:(575) 748-1283 Fax:(575) 748-9720
District III
1000 Rio Brazos Rd., Aztec, NM 87410
Phone:(505) 334-6178 Fax:(505) 334-6170
District IV
1220 S. St Francis Dr., Santa Fe, NM 87505
Phone:(505) 476-3470 Fax:(505) 476-3462

State of New Mexico
Energy, Minerals and Natural Resources
Oil Conservation Division
1220 S. St Francis Dr.
Santa Fe, NM 87505

Form APD Conditions

Permit 251262

PERMIT CONDITIONS OF APPROVAL

Operator Name and Address: APACHE CORPORATION [873] 303 Veterans Airpark Ln Midland, TX 79705		API Number: 30-015-44905
		Well: PALMILLO 26 STATE COM #313H
OCD Reviewer	Condition	
rpodany	Will require a directional survey with the C-104	
rpodany	Cement is required to circulate on both surface and intermediate1 strings of casing	