

District I
1625 N. French Dr., Hobbs, NM 88240
Phone:(575) 393-6161 Fax:(575) 393-0720

District II
811 S. First St., Artesia, NM 88210
Phone:(575) 748-1283 Fax:(575) 748-9720

District III
1000 Rio Brazos Rd., Aztec, NM 87410
Phone:(505) 334-6178 Fax:(505) 334-6170

District IV
1220 S. St Francis Dr., Santa Fe, NM 87505
Phone:(505) 476-3470 Fax:(505) 476-3462

State of New Mexico
Energy, Minerals and Natural Resources
Oil Conservation Division
1220 S. St Francis Dr.
Santa Fe, NM 87505

Form C-101
August 1, 2011
Permit 262570

APPLICATION FOR PERMIT TO DRILL, RE-ENTER, DEEPEN, PLUGBACK, OR ADD A ZONE

1. Operator Name and Address Ridge Runner Resources Operating, LLC 1004 N. Big Spring Street Midland, TX 79701		2. OGRID Number 373013
4. Property Code 324871		3. API Number 30-025-45558
5. Property Name MEDUSA 2635 STATE		6. Well No. 001H

7. Surface Location

UL - Lot	Section	Township	Range	Lot Idn	Feet From	N/S Line	Feet From	E/W Line	County
C	26	20S	35E	C	100	N	2400	W	Lea

8. Proposed Bottom Hole Location

UL - Lot	Section	Township	Range	Lot Idn	Feet From	N/S Line	Feet From	E/W Line	County
N	35	20S	35E	N	100	S	1980	W	Lea

9. Pool Information

FEATHERSTONE;BONE SPRING	24250
--------------------------	-------

Additional Well Information

11. Work Type New Well	12. Well Type OIL	13. Cable/Rotary	14. Lease Type State	15. Ground Level Elevation 3672
16. Multiple N	17. Proposed Depth 20515	18. Formation 2nd Bone Spring Carbonate	19. Contractor	20. Spud Date
Depth to Ground water		Distance from nearest fresh water well		Distance to nearest surface water

☒ We will be using a closed-loop system in lieu of lined pits

21. Proposed Casing and Cement Program

Type	Hole Size	Casing Size	Casing Weight/ft	Setting Depth	Sacks of Cement	Estimated TOC
Surf	17.5	13.375	48	2000	1700	0
Int1	12.25	9.625	36	5800	1600	0
Prod	8.75	7	26	9800	300	5300
Prod	8.75	5.5	17	20515	2200	9800

Casing/Cement Program: Additional Comments

Tapered 7" x 5-1/2" production string.
--

22. Proposed Blowout Prevention Program

Type	Working Pressure	Test Pressure	Manufacturer
Annular	3000	1500	
Double Ram	5000	3000	

23. I hereby certify that the information given above is true and complete to the best of my knowledge and belief. I further certify I have complied with 19.15.14.9 (A) NMAC <input checked="" type="checkbox"/> and/or 19.15.14.9 (B) NMAC <input checked="" type="checkbox"/> if applicable. Signature:	OIL CONSERVATION DIVISION
Printed Name: Electronically filed by Michelle Sena	Approved By: Paul F Kautz
Title:	Title: Geologist
Email Address: msena@3ROperating.com	Approved Date: 2/7/2019 Expiration Date: 2/7/2021
Date: 1/23/2019 Phone: 432-684-7877	Conditions of Approval Attached

District I
1625 N. French Dr., Hobbs, NM 88240
Phone: (575) 393-6161 Fax: (575) 393-0720
District II
811 S. First St., Artesia, NM 88210
Phone: (575) 748-1283 Fax: (575) 748-9720
District III
1000 Rio Brazos Road, Aztec, NM 87410
Phone: (505) 334-6178 Fax: (505) 334-6170
District IV
1220 S. St. Francis Dr., Santa Fe, NM 87505
Phone: (505) 476-3460 Fax: (505) 476-3462

State of New Mexico
Energy, Minerals & Natural Resources Department
OIL CONSERVATION DIVISION
1220 South St. Francis Dr.
Santa Fe, NM 87505

Form C-102
Revised August 1, 2011
Submit one copy to appropriate
District Office

☐ AMENDED REPORT

WELL LOCATION AND ACREAGE DEDICATION PLAT

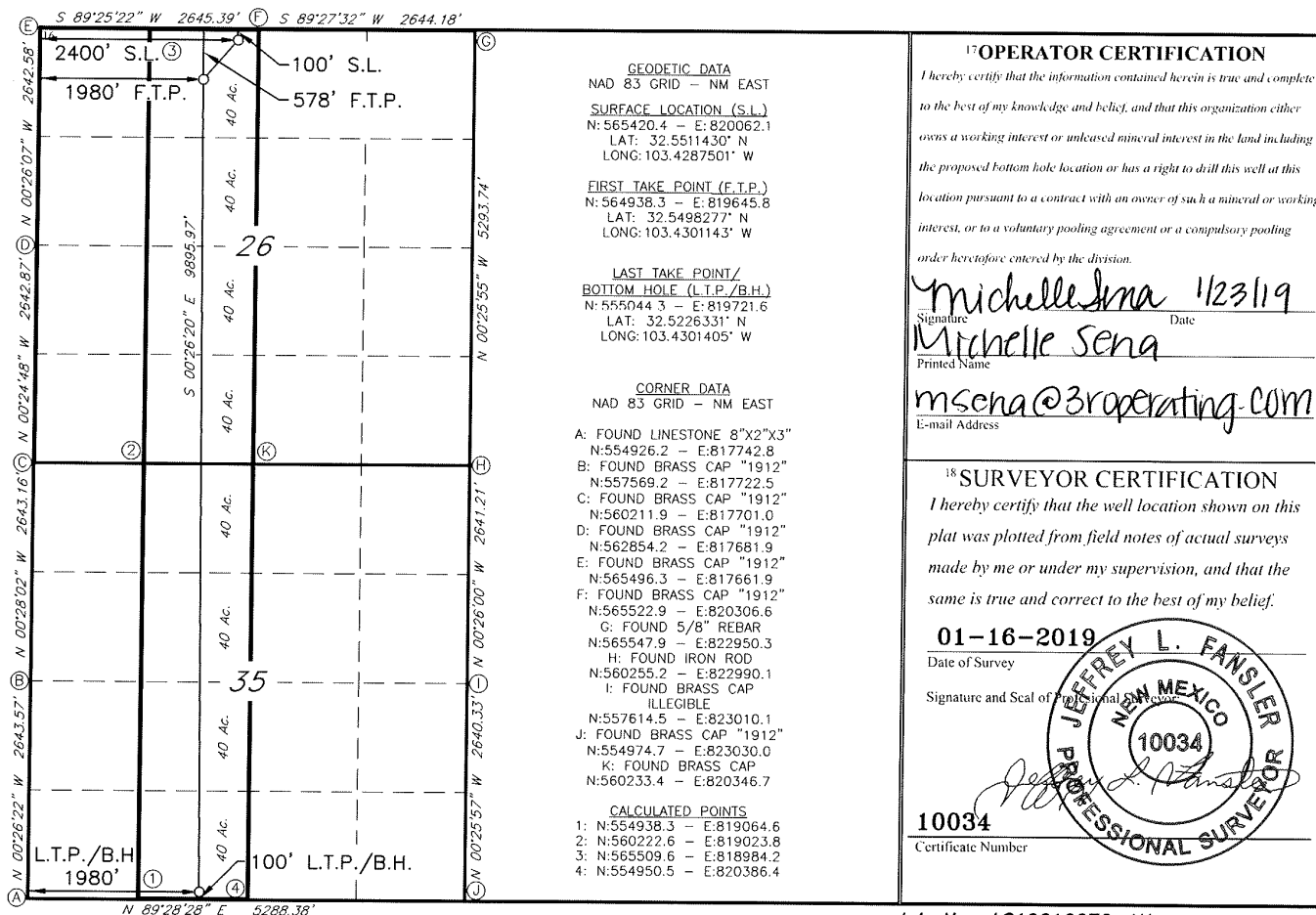
¹ API Number		² Pool Code		³ Pool Name	
⁴ Property Code		⁵ Property Name MEDUSA 2635 STATE			
⁷ GRID NO.		⁸ Operator Name RIDGE RUNNER RESOURCES OPERATING, LLC.			
		⁶ Well Number 1H		⁹ Elevation 3672'	

¹⁰ Surface Location									
UL or lot no.	Section	Township	Range	Lot Idn	Feet from the	North/South line	Feet From the	East/West line	County
C	26	20	35		100	NORTH	2400	WEST	LEA

¹¹ Bottom Hole Location If Different From Surface									
UL or lot no.	Section	Township	Range	Lot Idn	Feet from the	North/South line	Feet from the	East/West line	County
N	35	20	35		100	SOUTH	1980	WEST	LEA

¹² Dedicated Acres	¹³ Joint or Infill	¹⁴ Consolidation Code	¹⁵ Order No.

No allowable will be assigned to this completion until all interest have been consolidated or a non-standard unit has been approved by the division.



Job No.: LS19010070_1H

District I
1625 N. French Dr., Hobbs, NM 88240
Phone:(575) 393-6161 Fax:(575) 393-0720

District II
811 S. First St., Artesia, NM 88210
Phone:(575) 748-1283 Fax:(575) 748-9720

District III
1000 Rio Brazos Rd., Aztec, NM 87410
Phone:(505) 334-6178 Fax:(505) 334-6170

District IV
1220 S. St Francis Dr., Santa Fe, NM 87505
Phone:(505) 476-3470 Fax:(505) 476-3462

State of New Mexico
Energy, Minerals and Natural Resources
Oil Conservation Division
1220 S. St Francis Dr.
Santa Fe, NM 87505

Form APD Comments

Permit 262570

PERMIT COMMENTS

Operator Name and Address: Ridge Runner Resources Operating, LLC [373013] 1004 N. Big Spring Street Midland, TX 79701		API Number: 30-025-45558
		Well: MEDUSA 2635 STATE #001H

Created By	Comment	Comment Date
------------	---------	--------------

District I
 1625 N. French Dr., Hobbs, NM 88240
 Phone:(575) 393-6161 Fax:(575) 393-0720
District II
 811 S. First St., Artesia, NM 88210
 Phone:(575) 748-1283 Fax:(575) 748-9720
District III
 1000 Rio Brazos Rd., Aztec, NM 87410
 Phone:(505) 334-6178 Fax:(505) 334-6170
District IV
 1220 S. St Francis Dr., Santa Fe, NM 87505
 Phone:(505) 476-3470 Fax:(505) 476-3462

State of New Mexico
Energy, Minerals and Natural Resources
Oil Conservation Division
1220 S. St Francis Dr.
Santa Fe, NM 87505

Form APD Conditions

Permit 262570

PERMIT CONDITIONS OF APPROVAL

Operator Name and Address: Ridge Runner Resources Operating, LLC [373013] 1004 N. Big Spring Street Midland, TX 79701	API Number: 30-025-45558
	Well: MEDUSA 2635 STATE #001H

OCD Reviewer	Condition
pkautz	Will require a directional survey with the C-104
pkautz	1) SURFACE & INTERMEDIATE CASING - Cement must circulate to surface -- 2) PRODUCTION CASING - Cement must tie back into intermediate casing --
pkautz	If cement does not circulate to surface, must run temperature survey or other log to determine top of cement
pkautz	Surface casing must be set 25' below top of Rustler Anhydrite in order to seal off protectable water
pkautz	1)- The Operator is to notify NMOCD by sundry (Form C-103) within ten (10) days of the well being spud 2)- Drilling Sundries Form C-103 (Casing and Cement test are to be submitted within 10 days 3)- Completion Reports & Logs are to be submitted within 45 days 4)- Deviation / Directional Drill Survey are to be filed with or prior to C-104
pkautz	It is the operator's responsibility to monitor cancellation dates of approved APDs. APD's are good for 2 years and may be extended for one year. Only one 1 year extension will be granted if submitted by C-103 before expiration date. After expiration date or after a 1 year extension must submit new APD.
pkautz	Stage Tool 1) Must notify OCD Hobbs Office prior to running Stage Tool at 5753703186 2) If using Stage Tool on Surface casing, Stage Tool must be set greater than 350' from surface and a minimum of 200 feet above surface shoe. 3) When using a Stage Tool on Intermediate or Production Casing Stage must be a minimum of 50 feet below previous casing shoe.