

District I
1625 N. French Dr., Hobbs, NM 88240
Phone:(575) 393-6161 Fax:(575) 393-0720

District II
811 S. First St., Artesia, NM 88210
Phone:(575) 748-1283 Fax:(575) 748-9720

District III
1000 Rio Brazos Rd., Aztec, NM 87410
Phone:(505) 334-6178 Fax:(505) 334-6170

District IV
1220 S. St Francis Dr., Santa Fe, NM 87505
Phone:(505) 476-3470 Fax:(505) 476-3462

State of New Mexico
Energy, Minerals and Natural Resources
Oil Conservation Division
1220 S. St Francis Dr.
Santa Fe, NM 87505

Form C-101
August 1, 2011
Permit 265218

APPLICATION FOR PERMIT TO DRILL, RE-ENTER, DEEPEN, PLUGBACK, OR ADD A ZONE

1. Operator Name and Address CIMAREX ENERGY CO. OF COLORADO 600 N. Marienfeld Street Midland, TX 79701		2. OGRID Number 162683
		3. API Number 30-025-45794
4. Property Code 38816	5. Property Name ADAMS STATE COM	6. Well No. 015H

7. Surface Location

UL - Lot I	Section 6	Township 21S	Range 33E	Lot Idn I	Feet From 1996	N/S Line S	Feet From 1031	E/W Line E	County Lea
---------------	--------------	-----------------	--------------	--------------	-------------------	---------------	-------------------	---------------	---------------

8. Proposed Bottom Hole Location

UL - Lot P	Section 7	Township 21S	Range 33E	Lot Idn P	Feet From 100	N/S Line S	Feet From 825	E/W Line E	County Lea
---------------	--------------	-----------------	--------------	--------------	------------------	---------------	------------------	---------------	---------------

9. Pool Information

WC-025 G-08 S213304D;BONE SPRING	97895
----------------------------------	-------

Additional Well Information

11. Work Type New Well	12. Well Type OIL	13. Cable/Rotary	14. Lease Type State	15. Ground Level Elevation 3802
16. Multiple N	17. Proposed Depth 18379	18. Formation Bone Spring	19. Contractor	20. Spud Date 5/1/2019
Depth to Ground water		Distance from nearest fresh water well		Distance to nearest surface water

☒ We will be using a closed-loop system in lieu of lined pits

21. Proposed Casing and Cement Program

Type	Hole Size	Casing Size	Casing Weight/ft	Setting Depth	Sacks of Cement	Estimated TOC
Surf	17.5	13.375	54.5	1655	1017	0
Int1	12.25	9.625	40	5426	1305	0
Prod	8.75	5.5	17	18379	2072	0

Casing/Cement Program: Additional Comments

--

22. Proposed Blowout Prevention Program

Type	Working Pressure	Test Pressure	Manufacturer
Double Ram	2000	2000	Cameran
Double Ram	3000	3000	Cameran

23. I hereby certify that the information given above is true and complete to the best of my knowledge and belief. I further certify I have complied with 19.15.14.9 (A) NMAC <input checked="" type="checkbox"/> and/or 19.15.14.9 (B) NMAC <input checked="" type="checkbox"/> if applicable. Signature:	OIL CONSERVATION DIVISION
Printed Name: Electronically filed by Terri Stathem	Approved By: Paul F Kautz
Title: Coord. Regulatory Compl	Title: Geologist
Email Address: tstathem@cimarex.com	Approved Date: 4/2/2019 Expiration Date: 4/2/2021
Date: 3/20/2019 Phone: 918-295-1763	Conditions of Approval Attached

District I
1625 N. French Dr., Hobbs, NM 88240
Phone: (575) 393-6161 Fax: (575) 393-0720
District II
811 S. First St., Artesia, NM 88210
Phone: (575) 748-1283 Fax: (575) 748-9720
District III
1000 Rio Brazos Road, Aztec, NM 87410
Phone: (505) 334-6178 Fax: (505) 334-6170
District IV
1220 S. St. Francis Dr., Santa Fe, NM 87305
Phone: (505) 476-3460 Fax: (505) 476-3462

State of New Mexico
Energy, Minerals & Natural Resources Department
OIL CONSERVATION DIVISION
1220 South St. Francis Dr.
Santa Fe, NM 87505

Form C-102
Revised August 1, 2011
Submit one copy to appropriate
District Office

☐ AMENDED REPORT

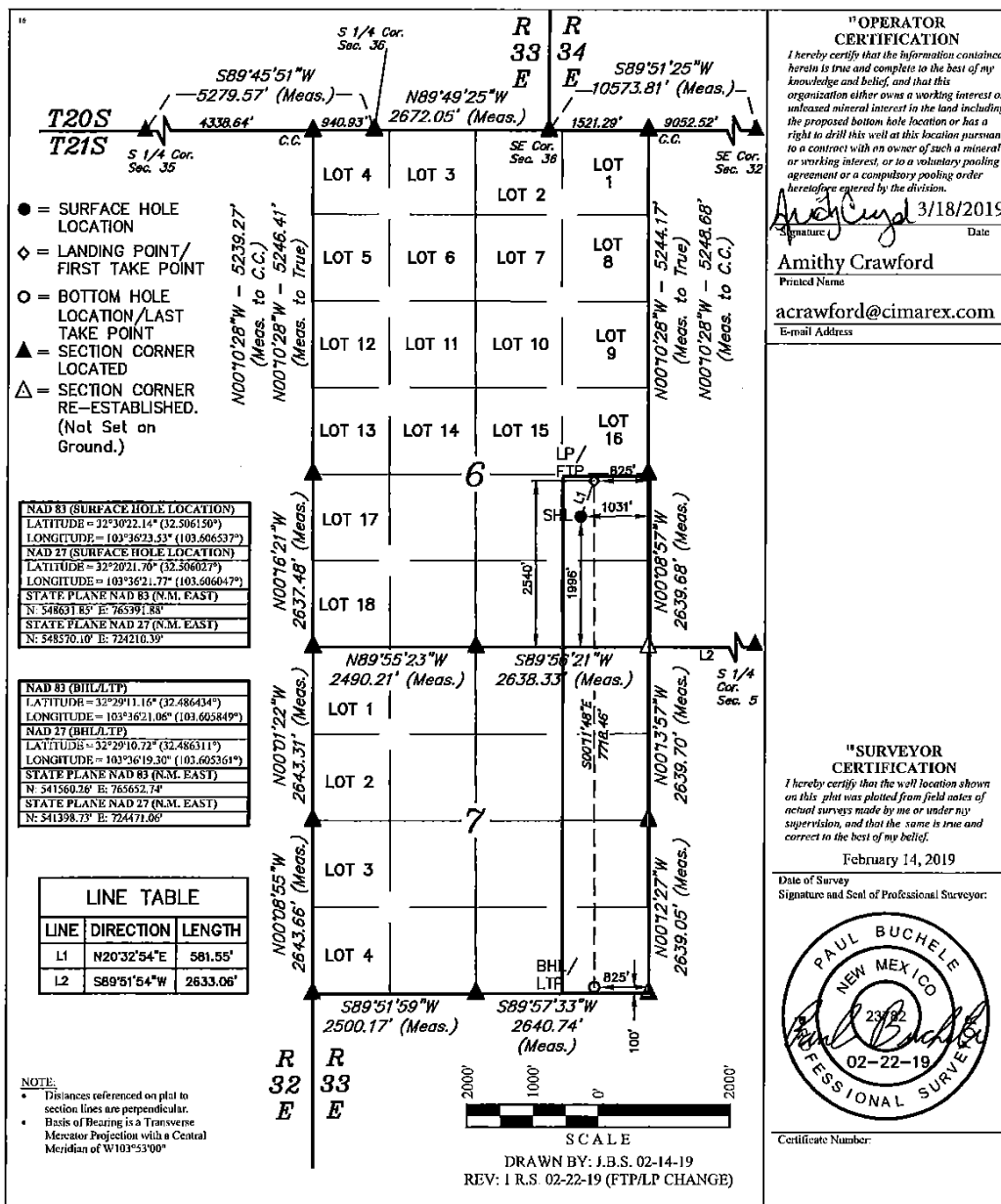
WELL LOCATION AND ACREAGE DEDICATION PLAT

30-025- ¹ APT Number	² Pool Code 97895	³ Pool Name WC-025 G-08 S213304D; Bone Spring
⁴ Property Code 38816	⁵ Property Name ADAMS STATE COM	⁶ Well Number 15H
⁷ OGRID No. 162683	⁸ Operator Name Cimarex Energy Co. of Colorado	⁹ Elevation 3802.2'

"Surface Location								
UL or lot no.	Section	Township	Range	Lot Idn	Feet from the	North/South line	Feet from the	East/West line
I	6	21S	33E		1996	SOUTH	1031	EAST
								County LEA

"Bottom Hole Location If Different From Surface								
UL or lot no.	Section	Township	Range	Lot Idn	Feet from the	North/South line	Feet from the	East/West line
P	7	21S	33E		100	SOUTH	825	EAST
								County LEA
¹¹ Dedicated Acres 240	¹² Joint or Infill	¹³ Consolidation Code	¹⁴ Order No.					

No allowable will be assigned to this completion until all interests have been consolidated or a non-standard unit has been approved by the division.



District I
1625 N. French Dr., Hobbs, NM 88240
Phone:(575) 393-6161 Fax:(575) 393-0720
District II
811 S. First St., Artesia, NM 88210
Phone:(575) 748-1283 Fax:(575) 748-9720
District III
1000 Rio Brazos Rd., Aztec, NM 87410
Phone:(505) 334-6178 Fax:(505) 334-6170
District IV
1220 S. St Francis Dr., Santa Fe, NM 87505
Phone:(505) 476-3470 Fax:(505) 476-3462

State of New Mexico
Energy, Minerals and Natural Resources
Oil Conservation Division
1220 S. St Francis Dr.
Santa Fe, NM 87505

Form APD Comments

Permit 265218

PERMIT COMMENTS

Operator Name and Address: CIMAREX ENERGY CO. OF COLORADO [162683] 600 N. Marienfeld Street Midland, TX 79701		API Number: 30-025-45794
		Well: ADAMS STATE COM #015H

Created By	Comment	Comment Date
pkautz	Potash letter sent to BLM & SLO 03/21/2019	3/21/2019

District I

1625 N. French Dr., Hobbs, NM 88240
 Phone:(575) 393-6161 Fax:(575) 393-0720

District II

811 S. First St., Artesia, NM 88210
 Phone:(575) 748-1283 Fax:(575) 748-9720

District III

1000 Rio Brazos Rd., Aztec, NM 87410
 Phone:(505) 334-6178 Fax:(505) 334-6170

District IV

1220 S. St Francis Dr., Santa Fe, NM 87505
 Phone:(505) 476-3470 Fax:(505) 476-3462

Form APD Conditions

Permit 265218

State of New Mexico
Energy, Minerals and Natural Resources
Oil Conservation Division
1220 S. St Francis Dr.
Santa Fe, NM 87505

PERMIT CONDITIONS OF APPROVAL

Operator Name and Address: CIMAREX ENERGY CO. OF COLORADO [162683] 600 N. Marienfeld Street Midland, TX 79701	API Number: 30-025-45794
	Well: ADAMS STATE COM #015H

OCD Reviewer	Condition
pkautz	Will require a directional survey with the C-104
pkautz	If cement does not circulate to surface, must run temperature survey or other log to determine top of cement
pkautz	Surface casing must be set 25' below top of Rustler Anhydrite in order to seal off protectable water
pkautz	1)- The Operator is to notify NMOCD by sundry (Form C-103) within ten (10) days of the well being spud 2)- Drilling Sundries Form C-103 (Casing and Cement test are to be submitted within 10 days 3)- Completion Reports & Logs are to be submitted within 45 days 4)- Deviation / Directional Drill Survey are to be filed with or prior to C-104
pkautz	It is the operator's responsibility to monitor cancellation dates of approved APDs. APD's are good for 2 years and may be extended for one year. Only one 1 year extension will be granted if submitted by C-103 before expiration date. After expiration date or after a 1 year extension must submit new APD.
pkautz	Stage Tool 1) Must notify OCD Hobbs Office prior to running Stage Tool at 5753703186 2) If using Stage Tool on Surface casing, Stage Tool must be set greater than 350' from surface and a minimum of 200 feet above surface shoe. 3) When using a Stage Tool on Intermediate or Production Casing Stage must be a minimum of 50 feet below previous casing shoe.
pkautz	1) SURFACE, INTERMEDIATE & PRODUCTION CASING - Cement must circulate to surface
pkautz	Potash Area - Three String Casing Program - In accordance with R-111-P all strings shall be cemented to surface.
pkautz	Salt Protection String - If the cement fails to reach the surface or the bottom of the cellar, where required, the top of the cement shall be located by a temperature or other survey and additional cementing shall be done until the cement is brought to the surface.