

**District I**  
1625 N. French Dr., Hobbs, NM 88240  
Phone:(575) 393-6161 Fax:(575) 393-0720

**District II**  
811 S. First St., Artesia, NM 88210  
Phone:(575) 748-1283 Fax:(575) 748-9720

**District III**  
1000 Rio Brazos Rd., Aztec, NM 87410  
Phone:(505) 334-6178 Fax:(505) 334-6170

**District IV**  
1220 S. St Francis Dr., Santa Fe, NM 87505  
Phone:(505) 476-3470 Fax:(505) 476-3462

**State of New Mexico**  
**Energy, Minerals and Natural Resources**  
**Oil Conservation Division**  
**1220 S. St Francis Dr.**  
**Santa Fe, NM 87505**

Form C-101  
August 1, 2011  
Permit 267312

**APPLICATION FOR PERMIT TO DRILL, RE-ENTER, DEEPEN, PLUGBACK, OR ADD A ZONE**

1. Operator Name and Address BTA OIL PRODUCERS, LLC 104 S Pecos Midland, TX 79701		2. OGRID Number 260297
4. Property Code 325655		3. API Number 30-025-46060
5. Property Name SOUTH RIDGE 8030 STATE		6. Well No. 002H

**7. Surface Location**

UL - Lot	Section	Township	Range	Lot Idn	Feet From	N/S Line	Feet From	E/W Line	County
E	2	23S	34E	E	2380	N	1155	W	Lea

**8. Proposed Bottom Hole Location**

UL - Lot	Section	Township	Range	Lot Idn	Feet From	N/S Line	Feet From	E/W Line	County
N	11	23S	34E	N	50	S	1880	W	Lea

**9. Pool Information**

OJO CHISO;BONE SPRING, SOUTH	97293
------------------------------	-------

**Additional Well Information**

11. Work Type New Well	12. Well Type OIL	13. Cable/Rotary	14. Lease Type State	15. Ground Level Elevation 3388
16. Multiple N	17. Proposed Depth 18382	18. Formation 2nd Bone Spring Sand	19. Contractor	20. Spud Date 7/13/2019
Depth to Ground water		Distance from nearest fresh water well		Distance to nearest surface water

☒ We will be using a closed-loop system in lieu of lined pits

**21. Proposed Casing and Cement Program**

Type	Hole Size	Casing Size	Casing Weight/ft	Setting Depth	Sacks of Cement	Estimated TOC
Surf	17.5	13.375	54.5	1200	1035	0
Int1	12.25	9.625	40	5363	1615	0
Prod	8.75	5.5	17	18382	2680	4363

**Casing/Cement Program: Additional Comments**

--

**22. Proposed Blowout Prevention Program**

Type	Working Pressure	Test Pressure	Manufacturer
Double Ram	5000	5000	

23. I hereby certify that the information given above is true and complete to the best of my knowledge and belief. I further certify I have complied with 19.15.14.9 (A) NMAC <input checked="" type="checkbox"/> and/or 19.15.14.9 (B) NMAC <input checked="" type="checkbox"/> if applicable.  Signature:	<b>OIL CONSERVATION DIVISION</b>
Printed Name: Electronically filed by Katy Reddell	Approved By: Paul F Kautz
Title:	Title: Geologist
Email Address: kreddell@btaoil.com	Approved Date: 6/4/2019      Expiration Date: 6/4/2021
Date: 5/13/2019      Phone: 432-682-3753	Conditions of Approval Attached

DISTRICT I  
1625 N. French Dr., Hobbs, NM 88240  
Phone: (575) 393-6161 Fax: (575) 393-0720  
DISTRICT II  
811 S. First St., Artesia, NM 88210  
Phone: (575) 748-1283 Fax: (575) 748-9720  
DISTRICT III  
1000 Rio Brazos Road, Aztec, NM 87410  
Phone: (505) 334-6178 Fax: (505) 334-6170  
DISTRICT IV  
1220 S. St. Francis Dr., Santa Fe, NM 87505  
Phone: (505) 476-3460 Fax: (505) 476-3462

State of New Mexico  
Energy, Minerals & Natural Resources Department  
OIL CONSERVATION DIVISION  
1220 South St. Francis Dr.  
Santa Fe, New Mexico 87505

Form C-102  
Revised August 1, 2011  
Submit one copy to appropriate  
District Office

□ AMENDED REPORT

WELL LOCATION AND ACREAGE DEDICATION PLAT

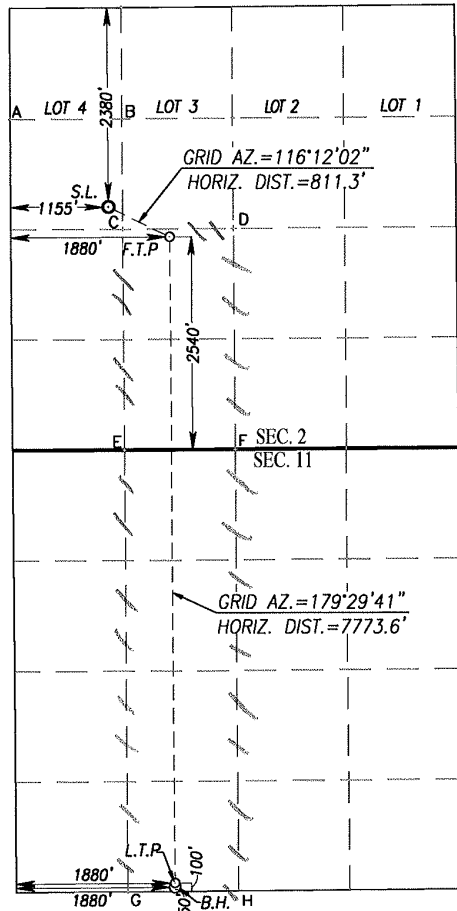
API Number	Pool Code	Pool Name <b>Antelope Ridge ; Bone Spring</b>
Property Code	Property Name <b>SOUTH RIDGE 8030 STATE</b>	Well Number <b>2H</b>
OGRID No. <b>260297</b>	Operator Name <b>BTA OIL PRODUCERS, LLC</b>	Elevation <b>3388'</b>

Surface Location									
UL or lot No.	Section	Township	Range	Lot Idn	Feet from the	North/South line	Feet from the	East/West line	County
E	2	23-S	34-E		2380	NORTH	1155	WEST	LEA

Bottom Hole Location If Different From Surface									
UL or lot No.	Section	Township	Range	Lot Idn	Feet from the	North/South line	Feet from the	East/West line	County
N	11	23-S	34-E		50	SOUTH	1880	WEST	LEA

Dedicated Acres <b>240</b>	Joint or Infill	Consolidation Code	Order No.
-------------------------------	-----------------	--------------------	-----------

NO ALLOWABLE WILL BE ASSIGNED TO THIS COMPLETION UNTIL ALL INTERESTS HAVE BEEN CONSOLIDATED OR A NON-STANDARD UNIT HAS BEEN APPROVED BY THE DIVISION



SCALE: 1"=2000'

GEODETIC COORDINATES	GEODETIC COORDINATES
NAD 83 NME	NAD 27 NME
SURFACE LOCATION	SURFACE LOCATION
Y= 486511.7 N	Y= 486451.6 N
X= 815499.6 E	X= 774316.0 E
LAT.=32.334370° N	LAT.=32.334245° N
LONG.=103.445684° W	LONG.=103.445206° W
FIRST TAKE POINT	FIRST TAKE POINT
NAD 83 NME	NAD 27 NME
Y= 486153.5 N	Y= 486093.5 N
X= 816227.5 E	X= 775043.8 E
LAT.=32.333369° N	LAT.=32.333244° N
LONG.=103.443337° W	LONG.=103.442860° W

CORNER COORDINATES TABLE

NAD 27 NME

A - Y= 487494.5 N, X= 773152.7 E
B - Y= 487503.7 N, X= 774473.8 E
C - Y= 486185.2 N, X= 774485.2 E
D - Y= 486194.4 N, X= 775806.2 E
E - Y= 483549.8 N, X= 774508.0 E
F - Y= 483559.8 N, X= 775829.6 E
G - Y= 478267.0 N, X= 774553.5 E
H - Y= 478278.1 N, X= 775873.9 E

CORNER COORDINATES TABLE

NAD 83 NME

A - Y= 487554.6 N, X= 814336.3 E
B - Y= 487563.8 N, X= 815657.4 E
C - Y= 486245.3 N, X= 815668.8 E
D - Y= 486254.4 N, X= 816989.8 E
E - Y= 483609.8 N, X= 815691.7 E
F - Y= 483619.8 N, X= 817013.3 E
G - Y= 478326.8 N, X= 815737.3 E
H - Y= 478337.9 N, X= 817057.8 E

LAST TAKE POINT

NAD 83 NME

Y= 478431.5 N
X= 816295.6 E
LAT.=32.312143° N
LONG.=103.443325° W

BOTTOM HOLE LOCATION

NAD 83 NME

Y= 478381.5 N
X= 816296.0 E
LAT.=32.312005° N
LONG.=103.443325° W

LAST TAKE POINT

NAD 27 NME

Y= 478371.7 N
X= 775111.8 E
LAT.=32.312018° N
LONG.=103.442848° W

BOTTOM HOLE LOCATION

NAD 27 NME

Y= 478321.7 N
X= 775112.2 E
LAT.=32.311881° N
LONG.=103.442847° W

OPERATOR CERTIFICATION

I hereby certify that the information herein is true and complete to the best of my knowledge and belief, and that this organization either owns a working interest or unleased mineral interest in the land including the proposed bottom hole location or has a right to drill this well at this location pursuant to a contract with an owner of such mineral or working interest, or to a voluntary pooling agreement or a compulsory pooling order heretofore entered by the division.

Signature: *Sammy Hajar* Date: 5/6/19  
Printed Name: **Sammy Hajar**  
E-mail Address: **SHAJAR@BTAOIL.COM**

SURVEYOR CERTIFICATION

I hereby certify that the well location shown on this plat was plotted from field notes of actual surveys made by me or under my supervision, and that the same is true and correct to the best of my belief.

FEBRUARY 19, 2019

Date of Survey: **February 19, 2019**  
Signature: *Ronald J. Eidson* Professional Surveyor



Certificate Number: **12641**  
Signature: *Ronald J. Eidson* Date: **2/19/2019**  
ACK: **JWSC W.O.: 19.11.0054**

**District I**  
1625 N. French Dr., Hobbs, NM 88240  
Phone:(575) 393-6161 Fax:(575) 393-0720

**District II**  
811 S. First St., Artesia, NM 88210  
Phone:(575) 748-1283 Fax:(575) 748-9720

**District III**  
1000 Rio Brazos Rd., Aztec, NM 87410  
Phone:(505) 334-6178 Fax:(505) 334-6170

**District IV**  
1220 S. St Francis Dr., Santa Fe, NM 87505  
Phone:(505) 476-3470 Fax:(505) 476-3462

**State of New Mexico**  
**Energy, Minerals and Natural Resources**  
**Oil Conservation Division**  
**1220 S. St Francis Dr.**  
**Santa Fe, NM 87505**

Form APD Comments

Permit 267312

**PERMIT COMMENTS**

Operator Name and Address: BTA OIL PRODUCERS, LLC [260297] 104 S Pecos Midland, TX 79701		API Number: 30-025-46060
		Well: SOUTH RIDGE 8030 STATE #002H

Created By	Comment	Comment Date
------------	---------	--------------

**District I**  
 1625 N. French Dr., Hobbs, NM 88240  
 Phone:(575) 393-6161 Fax:(575) 393-0720  
**District II**  
 811 S. First St., Artesia, NM 88210  
 Phone:(575) 748-1283 Fax:(575) 748-9720  
**District III**  
 1000 Rio Brazos Rd., Aztec, NM 87410  
 Phone:(505) 334-6178 Fax:(505) 334-6170  
**District IV**  
 1220 S. St Francis Dr., Santa Fe, NM 87505  
 Phone:(505) 476-3470 Fax:(505) 476-3462

**State of New Mexico**  
**Energy, Minerals and Natural Resources**  
**Oil Conservation Division**  
**1220 S. St Francis Dr.**  
**Santa Fe, NM 87505**

Form APD Conditions

Permit 267312

**PERMIT CONDITIONS OF APPROVAL**

Operator Name and Address: BTA OIL PRODUCERS, LLC [260297] 104 S Pecos Midland, TX 79701	API Number: 30-025-46060
	Well: SOUTH RIDGE 8030 STATE #002H

OCD Reviewer	Condition
pkautz	Will require a directional survey with the C-104
pkautz	1) SURFACE & INTERMEDIATE CASING - Cement must circulate to surface -- 2) PRODUCTION CASING - Cement must tie back into intermediate casing --
pkautz	If cement does not circulate to surface, must run temperature survey or other log to determine top of cement
pkautz	Surface casing must be set 25' below top of Rustler Anhydrite in order to seal off protectable water
pkautz	1)- The Operator is to notify NMOCD by sundry (Form C-103) within ten (10) days of the well being spud 2)- Drilling Sundries Form C-103 (Casing and Cement test are to be submitted within 10 days 3)- Completion Reports & Logs are to be submitted within 45 days 4)- Deviation / Directional Drill Survey are to be filed with or prior to C-104
pkautz	It is the operator's responsibility to monitor cancellation dates of approved APDs. APD's are good for 2 years and may be extended for one year. Only one 1 year extension will be granted if submitted by C-103 before expiration date. After expiration date or after a 1 year extension must submit new APD.
pkautz	Stage Tool 1) Must notify OCD Hobbs Office prior to running Stage Tool at 5753703186 2) If using Stage Tool on Surface casing, Stage Tool must be set greater than 350' from surface and a minimum of 200 feet above surface shoe. 3) When using a Stage Tool on Intermediate or Production Casing Stage must be a minimum of 50 feet below previous casing shoe.