

**District I**  
1625 N. French Dr., Hobbs, NM 88240  
Phone:(575) 393-6161 Fax:(575) 393-0720

**District II**  
811 S. First St., Artesia, NM 88210  
Phone:(575) 748-1283 Fax:(575) 748-9720

**District III**  
1000 Rio Brazos Rd., Aztec, NM 87410  
Phone:(505) 334-6178 Fax:(505) 334-6170

**District IV**  
1220 S. St Francis Dr., Santa Fe, NM 87505  
Phone:(505) 476-3470 Fax:(505) 476-3462

**State of New Mexico**  
**Energy, Minerals and Natural Resources**  
**Oil Conservation Division**  
**1220 S. St Francis Dr.**  
**Santa Fe, NM 87505**

Form C-101  
August 1, 2011  
Permit 268688

**APPLICATION FOR PERMIT TO DRILL, RE-ENTER, DEEPEN, PLUGBACK, OR ADD A ZONE**

1. Operator Name and Address MATADOR PRODUCTION COMPANY One Lincoln Centre Dallas, TX 75240		2. OGRID Number 228937
4. Property Code 325757		3. API Number 30-025-46155
5. Property Name GREVEY COM		6. Well No. 211H

**7. Surface Location**

UL - Lot	Section	Township	Range	Lot Idn	Feet From	N/S Line	Feet From	E/W Line	County
D	20	26S	35E	D	327	N	1008	W	Lea

**8. Proposed Bottom Hole Location**

UL - Lot	Section	Township	Range	Lot Idn	Feet From	N/S Line	Feet From	E/W Line	County
E	29	26S	35E	E	2582	N	330	W	Lea

**9. Pool Information**

JABALINA;WOLFCAMP, SOUTHWEST	96776
------------------------------	-------

**Additional Well Information**

11. Work Type New Well	12. Well Type OIL	13. Cable/Rotary	14. Lease Type Private	15. Ground Level Elevation 3182
16. Multiple N	17. Proposed Depth 20700	18. Formation Wolfcamp	19. Contractor	20. Spud Date 7/12/2019
Depth to Ground water		Distance from nearest fresh water well		Distance to nearest surface water

☒ We will be using a closed-loop system in lieu of lined pits

**21. Proposed Casing and Cement Program**

Type	Hole Size	Casing Size	Casing Weight/ft	Setting Depth	Sacks of Cement	Estimated TOC
Surf	17.5	13.375	54.5	1200	1200	0
Int1	12.25	9.625	40	5300	1400	0
Int2	8.75	7.625	29.7	12900	800	5200
Prod	6.75	5.5	20	20700	650	12400

**Casing/Cement Program: Additional Comments**

--

**22. Proposed Blowout Prevention Program**

Type	Working Pressure	Test Pressure	Manufacturer
Annular	5000	3000	CAMERON
Double Ram	10000	5000	CAMERON
Pipe	10000	5000	CAMERON

23. I hereby certify that the information given above is true and complete to the best of my knowledge and belief. I further certify I have complied with 19.15.14.9 (A) NMAC <input checked="" type="checkbox"/> and/or 19.15.14.9 (B) NMAC <input checked="" type="checkbox"/> if applicable.	<b>OIL CONSERVATION DIVISION</b>
Signature:	
Printed Name: Electronically filed by Ava Monroe	Approved By: Paul F Kautz
Title: Sr. Regulatory Analyst	Title: Geologist
Email Address: amonroe@matadorresources.com	Approved Date: 6/25/2019      Expiration Date: 6/25/2021
Date: 6/14/2019      Phone: 972-371-5218	Conditions of Approval Attached

District I  
1625 N. French Dr., Hobbs, NM 88240  
Phone: (575) 393-6161 Fax: (575) 393-0720  
District II  
811 S. First St., Artesia, NM 88210  
Phone: (575) 748-1283 Fax: (575) 748-9720  
District III  
1000 Rio Brazos Road, Aztec, NM 87410  
Phone: (505) 334-6178 Fax: (505) 334-6170  
District IV  
1220 S. St. Francis Dr., Santa Fe, NM 87505  
Phone: (505) 476-3460 Fax: (505) 476-3462

State of New Mexico  
Energy, Minerals & Natural Resources  
Department  
OIL CONSERVATION DIVISION  
1220 South St. Francis Dr.  
Santa Fe, NM 87505

FORM C-102  
Revised August 1, 2011  
Submit one copy to appropriate  
District Office

☐ AMENDED REPORT

WELL LOCATION AND ACREAGE DEDICATION PLAT

<sup>1</sup> API Number		<sup>2</sup> Pool Code 96776	<sup>3</sup> Pool Name Jabalina; Wolfcamp, Southwest
<sup>4</sup> Property Code	<sup>5</sup> Property Name GREVEY COM		<sup>6</sup> Well Number 211H
<sup>7</sup> OGRID No. 228937	<sup>8</sup> Operator Name MATADOR PRODUCTION COMPANY		<sup>9</sup> Elevation 3182'

<sup>10</sup>Surface Location

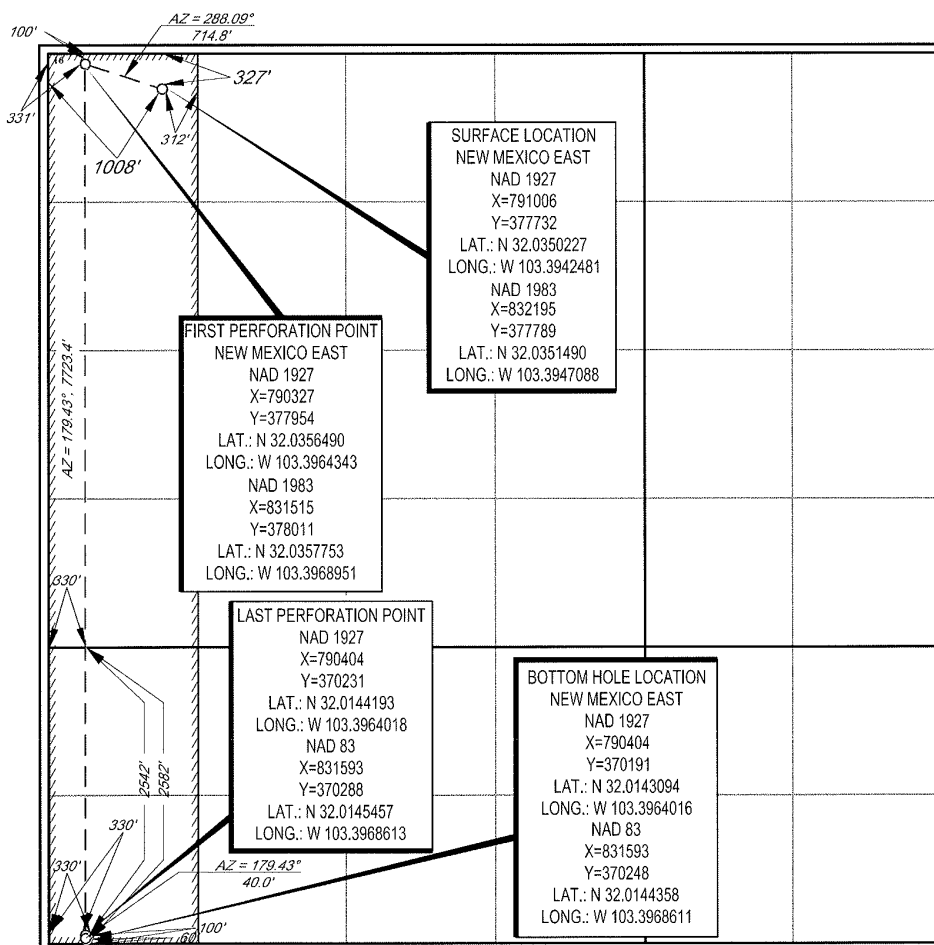
UL or lot no.	Section	Township	Range	Lot Idn	Feet from the	North/South line	Feet from the	East/West line	County
D	20	26-S	35-E	-	327'	NORTH	1008'	WEST	LEA

<sup>11</sup>Bottom Hole Location If Different From Surface

UL or lot no.	Section	Township	Range	Lot Idn	Feet from the	North/South line	Feet from the	East/West line	County
E	29	26-S	35-E	-	2582'	NORTH	330'	WEST	LEA

<sup>12</sup> Dedicated Acres 240	<sup>13</sup> Joint or Infill	<sup>14</sup> Consolidation Code	<sup>15</sup> Order No.
--------------------------------------	-------------------------------	----------------------------------	-------------------------

No allowable will be assigned to this completion until all interests have been consolidated or a non-standard unit has been approved by the division.



<sup>17</sup> OPERATOR CERTIFICATION	
I hereby certify that the information contained herein is true and complete to the best of my knowledge and belief, and that this organization either owns a working interest or unleased mineral interest in the land including the proposed bottom hole location or has a right to drill this well at this location pursuant to a contract with an owner of such a mineral or working interest, or to a voluntary pooling agreement or a compulsory pooling order heretofore entered by the division.	
<i>Chris Carleton</i>	6/12/19
Signature	Date
Chris Carleton	
Printed Name	
ccarleton@matadorresources.com	
E-mail Address	
<sup>18</sup> SURVEYOR CERTIFICATION	
I hereby certify that the well location shown on this plat was plotted from field notes of actual surveys made by me or under my supervision, and that the same is true to the best of my belief.	
05/17/2019	
Date of Survey	
Signature and Seal of Professional Surveyor	
ANGEL M. BAEZA	
25116	
PROFESSIONAL SURVEYOR	
Certificate Number	

**District I**  
1625 N. French Dr., Hobbs, NM 88240  
Phone:(575) 393-6161 Fax:(575) 393-0720  
**District II**  
811 S. First St., Artesia, NM 88210  
Phone:(575) 748-1283 Fax:(575) 748-9720  
**District III**  
1000 Rio Brazos Rd., Aztec, NM 87410  
Phone:(505) 334-6178 Fax:(505) 334-6170  
**District IV**  
1220 S. St Francis Dr., Santa Fe, NM 87505  
Phone:(505) 476-3470 Fax:(505) 476-3462

**State of New Mexico**  
**Energy, Minerals and Natural Resources**  
**Oil Conservation Division**  
**1220 S. St Francis Dr.**  
**Santa Fe, NM 87505**

Form APD Comments

Permit 268688

**PERMIT COMMENTS**

Operator Name and Address: MATADOR PRODUCTION COMPANY [228937] One Lincoln Centre Dallas, TX 75240		API Number: 30-025-46155
		Well: GREVEY COM #211H
Created By	Comment	Comment Date
pkautz	GCP received 06/24/2019	6/25/2019

**District I**

1625 N. French Dr., Hobbs, NM 88240  
 Phone:(575) 393-6161 Fax:(575) 393-0720

**District II**

811 S. First St., Artesia, NM 88210  
 Phone:(575) 748-1283 Fax:(575) 748-9720

**District III**

1000 Rio Brazos Rd., Aztec, NM 87410  
 Phone:(505) 334-6178 Fax:(505) 334-6170

**District IV**

1220 S. St Francis Dr., Santa Fe, NM 87505  
 Phone:(505) 476-3470 Fax:(505) 476-3462

Form APD Conditions

Permit 268688

**State of New Mexico**  
**Energy, Minerals and Natural Resources**  
**Oil Conservation Division**  
**1220 S. St Francis Dr.**  
**Santa Fe, NM 87505**

**PERMIT CONDITIONS OF APPROVAL**

Operator Name and Address: MATADOR PRODUCTION COMPANY [228937] One Lincoln Centre Dallas, TX 75240	API Number: 30-025-46155
	Well: GREVEY COM #211H

OCD Reviewer	Condition
pkautz	Will require a directional survey with the C-104
pkautz	1) SURFACE & INTERMEDIATE1 CASING - Cement must circulate to surface -- 2) INTERMEDIATE2 CASING - Cement must tie back into intermediate1 casing -- 3) PRODUCTION CASING - Cement must tie back into intermediate2 casing --
pkautz	If cement does not circulate to surface, must run temperature survey or other log to determine top of cement
pkautz	Surface casing must be set 25' below top of Rustler Anhydrite in order to seal off protectable water
pkautz	1)- The Operator is to notify NMOCDD by sundry (Form C-103) within ten (10) days of the well being spud 2)- Drilling Sundries Form C-103 (Casing and Cement test are to be submitted within 10 days 3)- Completion Reports & Logs are to be submitted within 45 days 4)- Deviation / Directional Drill Survey are to be filed with or prior to C-104
pkautz	It is the operator's responsibility to monitor cancellation dates of approved APDs. APD's are good for 2 years and may be extended for one year. Only one 1 year extension will be granted if submitted by C-103 before expiration date. After expiration date or after a 1 year extension must submit new APD.
pkautz	Stage Tool 1) Must notify OCD Hobbs Office prior to running Stage Tool at 5753703186 2) If using Stage Tool on Surface casing, Stage Tool must be set greater than 350' from surface and a minimum of 200 feet above surface shoe. 3) When using a Stage Tool on Intermediate or Production Casing Stage must be a minimum of 50 feet below previous casing shoe.