

District I 1625 N. French Dr., Hobbs, NM 88240 Phone:(575) 393-6161 Fax:(575) 393-0720 District II 811 S. First St., Artesia, NM 88210 Phone:(575) 748-1283 Fax:(575) 748-9720 District III 1000 Rio Brazos Rd., Aztec, NM 87410 Phone:(505) 334-6178 Fax:(505) 334-6170 District IV 1220 S. St Francis Dr., Santa Fe, NM 87505 Phone:(505) 476-3470 Fax:(505) 476-3462	State of New Mexico Energy, Minerals and Natural Resources Oil Conservation Division 1220 S. St Francis Dr. Santa Fe, NM 87505	Form C-103 August 1, 2011 Permit 269757 <hr/> WELL API NUMBER 30-025-05306 <hr/> 5. Indicate Type of Lease <hr/> 6. State Oil & Gas Lease No. <hr/> 7. Lease Name or Unit Agreement Name DENTON SWD																				
SUNDRY NOTICES AND REPORTS ON WELLS (DO NOT USE THIS FORM FOR PROPOSALS TO DRILL OR TO DEEPEN OR PLUG BACK TO A DIFFERENT RESERVOIR. USE "APPLICATION FOR PERMIT" (FORM C-101) FOR SUCH PROPOSALS.)																						
1. Type of Well: S		8. Well Number 003																				
2. Name of Operator FASKEN OIL & RANCH LTD		9. OGRID Number 151416																				
3. Address of Operator 6101 Holiday Hill, Road, Midland, TX 79707		10. Pool name or Wildcat																				
4. Well Location Unit Letter <u>M</u> : <u>330</u> feet from the <u>S</u> line and feet <u>330</u> from the <u>W</u> line Section <u>12</u> Township <u>15S</u> Range <u>37E</u> NMPM _____ County <u>Lea</u>																						
11. Elevation (Show whether DR, KB, BT, GR, etc.) 3783 GR																						
Pit or Below-grade Tank Application <input type="checkbox"/> or Closure <input type="checkbox"/> Pit Type _____ Depth to Groundwater _____ Distance from nearest fresh water well _____ Distance from nearest surface water _____ Pit Liner Thickness: _____ mil Below-Grade Tank: Volume _____ bbls; Construction Material _____																						
12. Check Appropriate Box to Indicate Nature of Notice, Report or Other Data <table style="width:100%;"> <tr> <td colspan="2" style="text-align: center;">NOTICE OF INTENTION TO:</td> <td colspan="2" style="text-align: center;">SUBSEQUENT REPORT OF:</td> </tr> <tr> <td>PERFORM REMEDIAL WORK <input type="checkbox"/></td> <td>PLUG AND ABANDON <input type="checkbox"/></td> <td>REMEDIAL WORK <input type="checkbox"/></td> <td>ALTER CASING <input type="checkbox"/></td> </tr> <tr> <td>TEMPORARILY ABANDON <input type="checkbox"/></td> <td>CHANGE OF PLANS <input type="checkbox"/></td> <td>COMMENCE DRILLING OPNS. <input type="checkbox"/></td> <td>PLUG AND ABANDON <input type="checkbox"/></td> </tr> <tr> <td>PULL OR ALTER CASING <input type="checkbox"/></td> <td>MULTIPLE COMPL <input type="checkbox"/></td> <td>CASING/CEMENT JOB <input type="checkbox"/></td> <td></td> </tr> <tr> <td colspan="2">Other: _____</td> <td colspan="2">Other: <u>Perforations/Tubing</u> <input checked="" type="checkbox"/></td> </tr> </table>			NOTICE OF INTENTION TO:		SUBSEQUENT REPORT OF:		PERFORM REMEDIAL WORK <input type="checkbox"/>	PLUG AND ABANDON <input type="checkbox"/>	REMEDIAL WORK <input type="checkbox"/>	ALTER CASING <input type="checkbox"/>	TEMPORARILY ABANDON <input type="checkbox"/>	CHANGE OF PLANS <input type="checkbox"/>	COMMENCE DRILLING OPNS. <input type="checkbox"/>	PLUG AND ABANDON <input type="checkbox"/>	PULL OR ALTER CASING <input type="checkbox"/>	MULTIPLE COMPL <input type="checkbox"/>	CASING/CEMENT JOB <input type="checkbox"/>		Other: _____		Other: <u>Perforations/Tubing</u> <input checked="" type="checkbox"/>	
NOTICE OF INTENTION TO:		SUBSEQUENT REPORT OF:																				
PERFORM REMEDIAL WORK <input type="checkbox"/>	PLUG AND ABANDON <input type="checkbox"/>	REMEDIAL WORK <input type="checkbox"/>	ALTER CASING <input type="checkbox"/>																			
TEMPORARILY ABANDON <input type="checkbox"/>	CHANGE OF PLANS <input type="checkbox"/>	COMMENCE DRILLING OPNS. <input type="checkbox"/>	PLUG AND ABANDON <input type="checkbox"/>																			
PULL OR ALTER CASING <input type="checkbox"/>	MULTIPLE COMPL <input type="checkbox"/>	CASING/CEMENT JOB <input type="checkbox"/>																				
Other: _____		Other: <u>Perforations/Tubing</u> <input checked="" type="checkbox"/>																				
13. Describe proposed or completed operations. (Clearly state all pertinent details, and give pertinent dates, including estimated date of starting any proposed work.) SEE RULE 1103. For Multiple Completions: Attach wellbore diagram of proposed completion or recompletion. Well had a casing leak. Attached is the work performed, and an approved MIT test attached as well. See Attached <div style="text-align: center;"> Perforations Pool: SWD; WOLFCAMP-PENN-MISS-DEVONIAN , 96137 Location: M -12-15S-37E 330 S 330 W </div> <table style="width:100%;"> <tr> <td>TOP</td> <td>BOT</td> <td>Open Hole</td> <td>Shots/ft</td> <td>Shot Size</td> <td>Material</td> <td>Stimulation</td> <td>Amount</td> </tr> </table> <div style="text-align: center;"> Tubing SWD;WOLFCAMP-PENN-MISS-DEVONIAN , 96137 </div> <table style="width:100%;"> <tr> <td>Tubing Size</td> <td>Type</td> <td>Depth Set</td> <td>Packer Set</td> </tr> <tr> <td>3.5</td> <td>9.3#</td> <td>9340</td> <td>9339</td> </tr> </table>			TOP	BOT	Open Hole	Shots/ft	Shot Size	Material	Stimulation	Amount	Tubing Size	Type	Depth Set	Packer Set	3.5	9.3#	9340	9339				
TOP	BOT	Open Hole	Shots/ft	Shot Size	Material	Stimulation	Amount															
Tubing Size	Type	Depth Set	Packer Set																			
3.5	9.3#	9340	9339																			
I hereby certify that the information above is true and complete to the best of my knowledge and belief. I further certify that any pit or below-grade tank has been/will be constructed or closed according to NMOC guidelines <input type="checkbox"/> a general permit <input type="checkbox"/> or an (attached) alternative OCD-approved plan <input type="checkbox"/>																						
<table style="width:100%;"> <tr> <td>SIGNATURE</td> <td><u>Electronically Signed</u></td> <td>TITLE</td> <td><u>Marketing Manager</u></td> <td>DATE</td> <td><u>7/16/2019</u></td> </tr> <tr> <td>Type or print name</td> <td><u>Sheila Simmons</u></td> <td>E-mail address</td> <td><u>sheilas@forl.com</u></td> <td>Telephone No.</td> <td><u>432-687-1777</u></td> </tr> </table>			SIGNATURE	<u>Electronically Signed</u>	TITLE	<u>Marketing Manager</u>	DATE	<u>7/16/2019</u>	Type or print name	<u>Sheila Simmons</u>	E-mail address	<u>sheilas@forl.com</u>	Telephone No.	<u>432-687-1777</u>								
SIGNATURE	<u>Electronically Signed</u>	TITLE	<u>Marketing Manager</u>	DATE	<u>7/16/2019</u>																	
Type or print name	<u>Sheila Simmons</u>	E-mail address	<u>sheilas@forl.com</u>	Telephone No.	<u>432-687-1777</u>																	
For State Use Only: <table style="width:100%;"> <tr> <td>APPROVED BY:</td> <td><u>Paul F Kautz</u></td> <td>TITLE</td> <td><u>Geologist</u></td> <td>DATE</td> <td><u>7/16/2019 3:01:40 PM</u></td> </tr> </table>			APPROVED BY:	<u>Paul F Kautz</u>	TITLE	<u>Geologist</u>	DATE	<u>7/16/2019 3:01:40 PM</u>														
APPROVED BY:	<u>Paul F Kautz</u>	TITLE	<u>Geologist</u>	DATE	<u>7/16/2019 3:01:40 PM</u>																	

Denton SWD #3 - Rpr hole in Csg

5/10/19

Notified NMOCD of intent to RU at 2:09 P.M. Rig anchors have been tested.

5/20/19

RU Renegade WL and ran casing caliper log from 4700' to top of 7" casing at 4573' and on 9-5/8" casing from 4573' to 4500', w/ 7" measuring from 6.36" ID to 6.4" ID, suspecting top 127' of 7" liner is 23# at liner top with 9-5/8" 8.8" ID 40#. Possible hole in 7" at 4658' per log. POW, LD tools and RDWL. PU 7" 29# Kline RBP, running head, 2-7/8" x 2 sub and 7" 29# HD packer w/ SN and RIW w/ 293 jts 2-7/8" N80 tubing and set RBP at 9346'.

5/21/19

Opened casing to 1/2 frac, established conventional circulation w/ 26 bbw and circulated well @ 1.75 - 2 bpm at 300 psi, circulated 520 bbls clean w/ 10# brine water and set packer @ 9321'. RU reverse unit on casing, loaded well w/ bw, closed pipe rams, RU chart recorder, pressured casing to 500 psi and lost all pressure in 1.5".

5/22/19

RIW w/ 7" packer and isolated casing leak on 7" casing from 5918' - 5950', 254' above old squeeze holes @ 6204' - 6454'.

5/23/19

Set packer @ 83' FS, RU reverse unit on tubing, loaded well w/ 6 bbw and tested to 5887 to 500 psi for 15" w/ maybe 10 psi loss in pressure from 83' - 5887' and bled off pressure. Suspected bad casing from 83' to surface on 9-5/8" casing. RU Stone Oilfield Services pump truck on tubing and spotted 250 gals 15% NEFE acid from 5950' - 5798' and observed fluid "U" tubed up tubing while POW to 5791', reversed 3 bbw and set packer. Attempted to break 7" leak without success and notified Midland office.

5/24/19

Held safety meeting, RU Big "E" Services pump truck on Kelly hose and pumped 250 gals 15% NEFE acid and spotted 1/2 barrel acid out the bottom of the packer and SD pump. set packer @ 5920'. LD 1 joint of tubing and power swivel. RU Big "E" on tubing and pressured well to 1000 psi w/ a loss of 500 psi in 20 seconds, kept pressuring well up after each drop and after 50 minutes w/ 3 bbls acid into leak, pressure bled down 300 psi in 1 minute, 500 psi in 4-4.5 minutes. Decision made to raise top pressure to 1500 psi in 100 psi increments, observed first 4-5 times pressure bled off to 500 psi in 20 seconds, more times well was pressured up slower the bleed off, 300 psi in 1 minute, 500 psi in 4-4.5 minutes, w/ 5 bbls acid into leak. Continued pressuring up leak with pressure leveling out from 1185 - 1085 psi and pressure dropping around 1 pound every 10 seconds. Increased pressure to 1700 psi twice w/ 400 psi in 30 seconds, 500 psi in 4-5 minutes, finished trying to break leak down at 1500 psi max pressure with same results until all acid had been pumped into leak. RD Big "E" Services, RU reverse unit on tubing, pressure bled straight off to 1/2 frac w/ just a trickle and released packer. POW w/ 4 joints 2-7/8" N80 to 5791'. RU reverse unit and reversed 40 bbw and observed 1 bbl acid to 1/2 frac and set packer @ 5791'.

5/28/19

RIW w/ 13 joints 2-7/8" N80 tailpipe (412'), redressed 7" MTX packer, 2-7/8" seating nipple and 180 joints 2-7/8" N80 tubing to 6111' and RU Petroplex Acidizing cement pump truck. Held safety meeting, RU Petroplex pump truck on tubing and pumped 100 bbw, mixed 4 bbl salt gel plug and spotted gel plug from 6111' - 6009'. POW w/ 4 joints 2-7/8" tubing to 5983', mixed 35 sx of micro fine cement w/ 1% CaCl₂, 0.05% C35 friction reducer/dispersant, 0.25% C41P powder defoamer, 11.8 lbs/gal, 1.412 yield, 8.226 gals/sk and pumped 5 bfw spacer, 8.8 bbls micro matrix cement, 1 bfw spacer, 29 bbw and balanced cement from 5983' - 5759', 224'. RD pump truck and POW w/ 12 joints 2-7/8" tubing to 5603'. RU Well-Foam reverse unit on casing, established reverse circulation and circulated 45 bbw, set packer @ 5191' w/ EOT @ 5603'. RU pump truck on tubing and pumped 1 bbl of cement @ 1/10 bpm into leak and pressured to 1500 psi. Hesitated squeeze 17 times from 5 minutes to 35 minutes and pressure dropped from 200 - 300 psi on 15" hesitations, 350 - 550 psi on 35" hesitations and on 2 occasions pressure fell just below 1000 psi, one in 2 minutes on 3rd hesitation and the other in 35 minutes on the 8th hesitation. Pumped a total of 2 bbls cement into leak, 7.97 total sacks, trapped 500 psi on leak, secured well RD cementers and SDON.

5/29/19

Observed no blow or suction on tubing. Dug out cellar to get to 13-3/8" WH and observed 18" x 9-5/8" casing sub under 9-5/8" WH w/ top of collar welded to sub. Also observed pea size hole 3" above collar, dug 2' below collar and encountered 2nd hole 2' below collar, dime size hole and finished digging out cellar to 13-3/8" casing. Observed no 13-3/8" WH w/ plate welded around top of 13-3/8" casing w/ a 1" riser to surface. Repaired 1" riser on 13-3/8" casing, received instructions to POW w/ packer and line up wireline truck for 5-30-19. Released 7" packer and POW w/ 293 joints 2-7/8" tubing and LD 7" MTX packer, secured well and SDON.

5/30/19

RIW w/ radial cement bond / gamma ray / CCL log to 4582', tagged TOL (WL depth), logged 9-5/8" casing to surface, observed good cement f/ 4582' - 150', surface - 150' had fluid moving w/ possible gas bubbles in fluid and sonic sensor would not pick up. RIW w/ 2nd casing inspection tool, made first pass, RIW for main pass, tool quit working and POW. Waited on 3rd inspection tool, checked out inspection tool of surface, RIW w/ MAC 60 multi arm caliper w/ MTT, logged 9-5/8" casing from 4582' - surface, observed 9-5/8" casing showed to be in good shape, bad spot from 972 - 1022' (old squeeze holes) and possible bad spot at 28' FS. RD WL, left ruck on location.

6/3/19

RIW w/ Mesquite Oil Tools 9-5/8" AD-1 packer, strip BOP and spool over tubing, NU BOP. RIW w/ packer isolating flow in 9-5/8" casing, isolated hole f/ 3669' - 3732', left packer set @ 3669', RU chart recorder on casing, pressured casing to 400 psi charted pressure on 9-5/8" casing f/ 0' - 3669', charted pressure on several occasions w/ different pressure loss, shut valve on chart recorder, observed chart recorder leaked off, called for a second chart recorder. RU second chart recorder, charted pressure for 15" w/ a 45 psi pressure loss, pressured casing back up to 400 psi w/ a 30 psi pressure loss,

pressured casing back to 400 psi a third time and observed a 15 psi pressure loss. Possible compressing gas in fluid, left valve 1/2 open to pit so gas can work out of fluid, left tubing flowing to 1/2 frac and SDON.

6/4/19

Midland office called with instructions to POW w/ 9-5/8" packer and RIW w/ bit to drill out squeeze f/ 5918' - 5950' in 7" casing. POW w/ 2-7/8" N80 tubing, ND BOP & spool, POW w/ 9-5/8" packer and NU BOP & spool. RIW w/ used 6" Varel L2K skirted cone bit (sn#1057951), 4-3/16" bit sub, 4-3/16" x-over sub, 186 joints 2-7/8" N80 tubing, tagged TOC @ 5900' and LD 4 joints 2-7/8" N80 tubing. RU Well- Foam 2.5 power swivel, stripper head, established reverse circulation and circulated bottoms up, observed black shale on top of cement, drilled cement f/ 5900' - 5913' in 14 minutes, drilled cement f/ 5913' - 5945' in 21 minutes, drilled cement f/ 5945' - 5976' in 47 minutes, drilled cement f/ 5976' - 5988' in 5 minutes and fell out of cement @ 5988'.

6/5/19

Released packer and RIW to 5950' and set packer. Tested packer and RBP @ 6140' to 500 psi for 10 minutes w/ 10 psi pressure loss. POW w/ 2 7/8" tubing to 5885' and set packer, pressure leak to 1500 psi w/ a 300 psi pressure loss in 15 seconds, 400 psi loss in 1 minute and 500 psi in 2 minutes, bumped pressure to 1500 psi several times w/ a slower pressure loss the more the leak was pressured against. Note: leak acts like it wants to take fluid at first then pressures straight up.

6/6/19

Mesquite Oil Tools 7" MTX packer, 2-7/8" seating nipple and 176 joints 2-7/8" N80 tubing to 5981' to spot cement. Mixed cement from sacks w/ 0.3% CJ212 retarder @ 12 lbs/gal, 1.31 yield, 7.58 gals/sk, established conventional circulation and pumped 50 bbw, 10 bfw spacer, 8.22 bbls microfine cement, 1-1/2 bfw spacer, 31 bbw at 2 bpm @ 300 psi and balanced cement from 5981' - 5772'. POW w/ 2-7/8" N80 tubing to 5603'. RU reverse unit on casing, reversed circulated 40 bbw to 1/2 frac and observed 2 bbls of cement had stayed in tubing and circulated to 1/2 frac while reverse circulating. Set packer @ 5191' w/ EOT @ 5603'. 1/2 bbl of cement left in casing above leak to pump due to loss of 2 bbls circulated back to 1/2 frac. Pumped a total of 3 bbls of cement into leak, 12.85 sx, and estimated TOC @ 5904'.

6/10/19

RIW w/ Varel L2K used cone bit (sn# 1057951), 4-3/16" bit sub, 4-3/16" x-over sub, 2-7/8" seating nipple, 187 joints 2-7/8" N80 tubing and tagged @ 5925' w/ leak from 5918'-5950'. POW LD 3 joints 2-7/8" tubing and RIW w/ 2 stands. RU Well-Foam 2.5 power swivel, stripped head, established reverse circulation and drilled from 5925'-5945' in 10", drilled from 5945'-5976' in 25", drilled from 5976'-5990' in 4" and fell out of cement. Circulated well clean, RD swivel and ND stripper head. POW w/ 2-7/8" N80 tubing and LD x-over sub, bit sub and bit.

6/11/19

RIW w/ 5-3/4" TOSSD, 2-7/8" seating nipple and 194 joints 2-7/8" N80 tubing and tagged sand @ 6134'. RU reverse unit, wash sand off top of RBP @ 6141', engaged and released RBP. Engaged RBP @ 9346', released RBP, and observed hard vacuum on well and let fluid equalize. RU Renegade WL, RU 7" composite bridge plug on Baker 20 setting tool w/

slow burn charge and RIW w/ WL to 9354' (WL depth), top of Baker Lok-set, PU to line weight plus 10', re-tagged top of packer, PU to line weight plus 2' and set 7" composite bridge plug @ 9352' (WL depth).

6/12/19

Tagged CBP @ 9356', LD tag joint, set 7" packer @ 9354'. RU Well-Foam reverse unit on tubing and tested to 1500 psi w/ a 250 psi pressure loss in 15" and bled pressure down. POW to 9321', set 7" packer, RU reverse unit and tested CBP to 1500 psi w/ a 10 psi loss in 15", bled pressure down and notified Midland office.

6/13/19

RIW w/ casing as follows:

1 - Weatherford 5-1/2" float shoe w/ FJ3 threads	1.55'	
1 - 5-1/2" 17# L80 EZGO FJ3 shoe joint	44.40'	
1 - Weatherford 5-1/2" float collar w/ FJ3 threads	1.56'	9314.37'
110 - 5-1/2" 17# L80 EZGO FJ3 casing	4830.52'	
1 - 7" 8rd box x 5-1/2" EZGO FJ3 pin x-over	1.21'	4482.64'
1 - 7" 23# K55 EUE 8rd casing	37.82'	
1 - Weatherford 7" EUE 8rd DV Tool	2.28'	4442.54'
111 - 7" 23# K55 EUE 8rd casing	4426.54'	
Sub Total	9345.88'	
KB	16.00'	
Total	9361.88'	

RU reverse unit and established conventional circulation w/ 110 bfw and circulated well for 45" until 7" cement head arrived. PU & RIW w/ 7" landing joint, lightly tagged CBP @ 9356', PU 2' and set casing on slips. pumped 20 bfw spacer, 130 sxs (60.6 bbls cement) Class "H" 50/50 + 10% gel + 0.4% C-12 + 0.15% C-20 + 0.25% C-41P + 5% salt, s.w. 11.60 #/gal, yield 2.62 cuft/sk, mixing water 15.31 gals/sk. Dropped bottom wiper plug, displaced cement w/ 170 bfw, slowed rate to 2 bpm for plug to go through DV tool (175 bbls). Circulated a total of 13 sx cement to 1/2 frac tank, opened well to reverse unit pit and circulated well until 6:45 a.m. CDT. Note: reciprocated liner while lifting cement outside 5-1/2" casing.

6/15/19

Pumped 20 bfw spacer and pumped 645 sxs (166.4 bbls) Class "C" 35/65 + 6% gel + 0.4% C-12 + 0.2% C-45 + 0.25% C-41P + 3% salt, s.w. 12.5 #/gal, yield 2.01 cuft/sk, mixing water 11.03 gals/sk. Dropped final closing plug, pumped 171 bfw displacement and bumped plug to 2500 psi and closed DV tool. Slowed pump rate during displacement to 3 bpm to keep pressure under 1170 psi, circulated 84 sx cement to surface w/ 141 bbls displacement pumped.

6/17/19

RD swivel and RIW w/ 2-7/8" tubing and tagged 7" x 5-1/2" x-over @ 4481'. POW to 4433', observed no bobble as scraper went through DV tool, RU reverse unit on tubing and tested casing and DV tool to 1000 psi for 15" w/ no pressure loss. Bled pressure off and RD stripper head. POW w/ 135 joints 2-7/8" tubing, 6 3-1/2" drill collars and LD 7" casing scraper, 3-1/2" short collar and 6-1/4" bit. RIW w/ used 4-3/4" Varel L2K skirted cone bit, 3-1/2" bit sub, 6 - 3-1/2" drill collars, 3-5/8" top x-over sub and 52 joints 2-7/8" N80 tubing to 1850', secured well and SDON.

6/18/19

Finished RIW w/ 4-3/4" bit, 141 joints 2-7/8" N80 tubing and tagged @ 4481', 7" x 5-1/2" x-over, rotated bit and fell through. Observed no obstruction, possible trash from DV tool, finished RIW w/ bit and tagged cement @ 9295', 19' above FC @ 9314'. Established reverse circulation w/ 1 bfw and drilled cement from 9295' - 9310' and tagged top of wiper plug, drilled wiper plug and drilled FC @ 9312', finished drilling cement to 9352' and circulated well clean. RU reverse unit on tubing, pressured casing to 1000 psi for 15" w/ no pressure loss and bled pressure off. RU swivel and drilled hard cement from 9352' - 9356', tagged and drilled CBP w/ 2K on 4-3/4" bit and tagged top of Baker Lok-set packer @ 9358' and observed pressure under CBP.

6/27/19

Roustabouts broke out 4" flanged gate valve on inj line. D & D fiberglass repairmen cut 4" fiberglass injection line to move riser away from WH, made 4" field thread on 4" HP f/g pipe. Installed 4" HP f/g threaded collar, 4" x 6' HP threaded f/g sub, 4" HP threaded 45, 4" x 3' HP threaded f/g sub and 4" HP threaded f/g flange to above ground level. Welder fabricated 3- 4" sch 80 spools with 4" 600 XH weld neck raised face flanges. Roustabouts installed spools and 4" gate valve for fit. Backhoe added pad dirt around f/g piping and backfilled with caliche from dig out. Roustabouts pulled off 3 steel spools to take to coaters.

7/10/19

Note: Contacted NMOCD, Jerry on 7-9-19 @ 10:15 MST with notice of MIT on 7-12-19 @ 8:00 a.m. MST.

7/11/19

Finished RIW w/ injection tubing as follows:

1 - NP 5-1/2" AS-1X packer w/ corvelli ID mandrel 7.60'
1 - 4-1/2" NP TOSSD w/ 2.31" SS "F" nipple (ew) 1.92'
1 - 4-1/2" SS x-over w/ 3-1/2" EUE box x 2-7/8" EUE pin (new) 0.53' 9329.50'
149 - 3-1/2" L80 9.30# EUE 8rd tubing w/ IC 101 IPC (new) 4899.25'
5-1/16" SS x-over w/ 4-1/2" EUE box x 3-1/2" EUE pin (new) 1.28' 4428.97
108 - 4-1/2" J55 11.60# EUE 8rd w/ IC 101 IPC (new) 4412.97'
KB 16.00'
Total 9339.55'

Spaced packer out and set 5-1/2" packer @ 9339'.

7/12/19

RU chart recorder on offside casing valve, filled casing w/ 1/2 bfw w/ PI-50 packer fluid, bled air from chart recorder line and pressured casing to 565 psi and isolated pump truck, opened valve to chart recorder and charted pressure for 32". Gary Robinson w/ NMOCD witnessed test and bled down pressure, signed off on chart and okayed well for injection. RDP, 55 Well Service Rig No. 56, released all rental equipment, cleaned location and set up barriers around WH. Left well SI.

7/15/19

Opened valve to SWD #3 well and equalized pressure. Returned well to operation w/ 11,000 bwpd rate and TP- 700 psi. Bled down csq/tbg annulus.

State of New Mexico
Energy, Minerals and Natural Resources Department
Oil Conservation Division Hobbs District Office

BRADENHEAD TEST REPORT

Operator Name FASKEN O.I. + Ranch		API Number 30-025-05306	
Property Name Denton SWD		Well No. #3	

Surface Location

UL - Lot M	Section 12	Township 15S	Range 37E	Feet from 330	N/S Line S	Feet From 330	E/W Line W	County LEA
----------------------	----------------------	------------------------	---------------------	-------------------------	----------------------	-------------------------	----------------------	----------------------

Well Status

TA'D WELL YES	<input checked="" type="radio"/> NO	<input checked="" type="radio"/> YES	SHUT-IN NO	INJ	INJECTOR <input checked="" type="radio"/> SWD	OIL	PRODUCER	GAS	DATE 7-12-19
------------------	-------------------------------------	--------------------------------------	---------------	-----	--	-----	----------	-----	------------------------

OBSERVED DATA

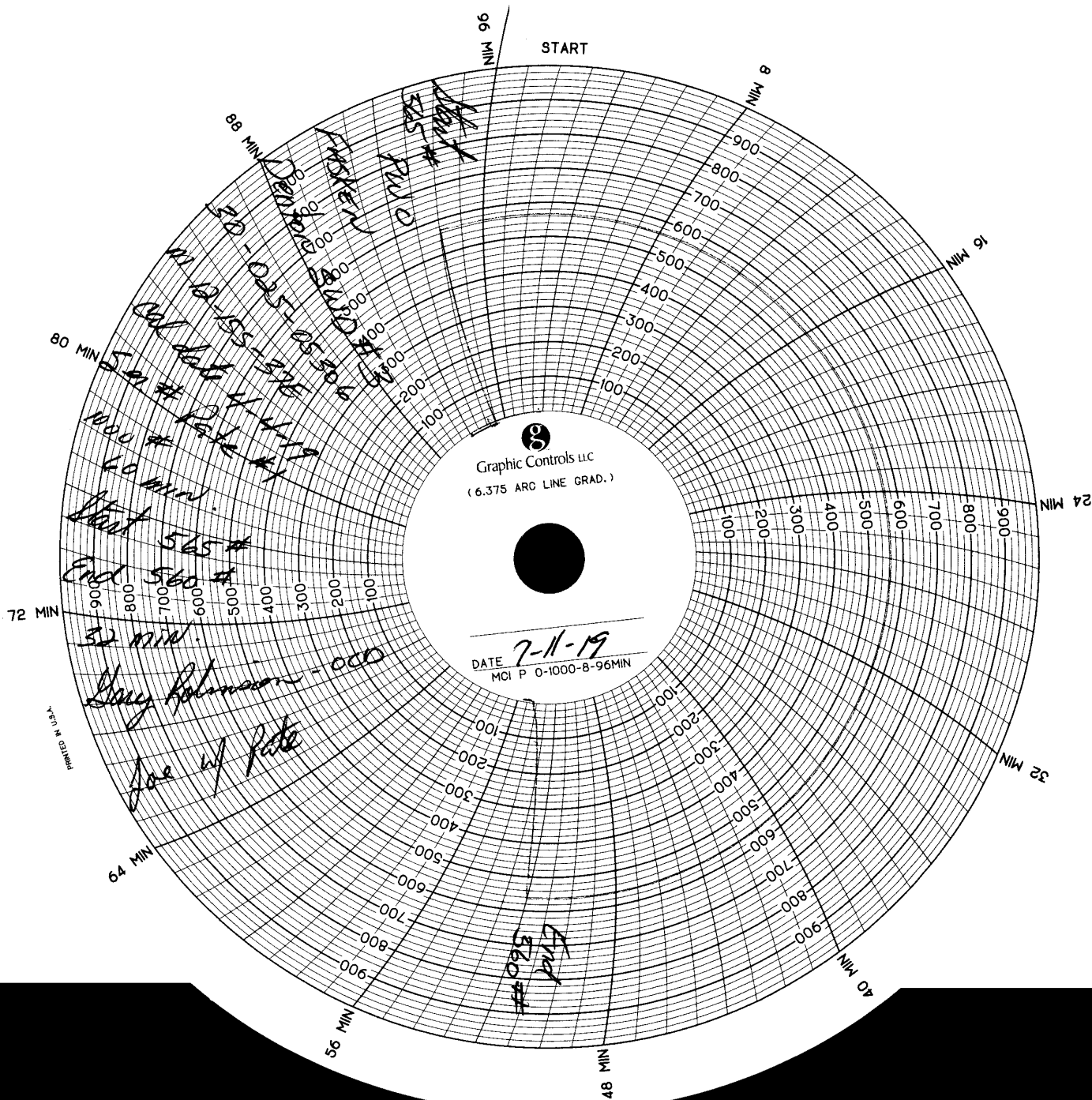
	(A) Surface	(B) Interm(1)	(C) Interm(2)	(D) Prod Csing	(E) Tubing
Pressure	0	0	N/A	0	0
Flow Characteristics					
Pull	Y <input checked="" type="radio"/> N	Y <input checked="" type="radio"/> N	Y / N	Y / <input checked="" type="radio"/> N	CO2 <input type="checkbox"/>
Steady Flow	Y <input checked="" type="radio"/> N	Y <input checked="" type="radio"/> N	Y / N	Y / <input checked="" type="radio"/> N	WTR <input checked="" type="checkbox"/>
Surges	Y / <input checked="" type="radio"/> N	Y / <input checked="" type="radio"/> N	Y / N	Y / <input checked="" type="radio"/> N	GAS <input type="checkbox"/>
Down to nothing	Y / <input checked="" type="radio"/> N	Y / <input checked="" type="radio"/> N	Y / N	Y / <input checked="" type="radio"/> N	Type of fluid injected for waterflood if applies
Gas or Oil	Y / <input checked="" type="radio"/> N	Y / <input checked="" type="radio"/> N	Y / N	Y / <input checked="" type="radio"/> N	
Water	Y / <input checked="" type="radio"/> N	Y / <input checked="" type="radio"/> N	Y / N	Y / <input checked="" type="radio"/> N	

Remarks - Please state for each string (A,B,C,D,E) pertinent information regarding bleed down or continuous build up if applies.

PWC

Signature:		OIL CONSERVATION DIVISION	
Printed name:		Entered into RBDMS JK	
Title:		Re-test	
E-mail Address:			
Date:	Phone:		
Witness: Larry Robinson			

INSTRUCTIONS ON BACK OF THIS FORM



District I
1625 N. French Dr., Hobbs, NM 88240
Phone:(575) 393-6161 Fax:(575) 393-0720
District II
811 S. First St., Artesia, NM 88210
Phone:(575) 748-1283 Fax:(575) 748-9720
District III
1000 Rio Brazos Rd., Aztec, NM 87410
Phone:(505) 334-6178 Fax:(505) 334-6170
District IV
1220 S. St Francis Dr., Santa Fe, NM 87505
Phone:(505) 476-3470 Fax:(505) 476-3462

State of New Mexico
Energy, Minerals and Natural Resources
Oil Conservation Division
1220 S. St Francis Dr.
Santa Fe, NM 87505

Comments

Permit 269757

TUBING COMMENTS

Operator: FASKEN OIL & RANCH LTD 6101 Holiday Hill Midland, TX 79707	OGRID: 151416
	Permit Number: 269757
	Permit Type: Tubing

Comments

Created By	Comment	Comment Date
------------	---------	--------------

There are no Comments for this Permit