

**District I**  
1625 N. French Dr., Hobbs, NM 88240  
Phone:(575) 393-6161 Fax:(575) 393-0720

**District II**  
811 S. First St., Artesia, NM 88210  
Phone:(575) 748-1283 Fax:(575) 748-9720

**District III**  
1000 Rio Brazos Rd., Aztec, NM 87410  
Phone:(505) 334-6178 Fax:(505) 334-6170

**District IV**  
1220 S. St Francis Dr., Santa Fe, NM 87505  
Phone:(505) 476-3470 Fax:(505) 476-3462

**State of New Mexico**  
**Energy, Minerals and Natural Resources**  
**Oil Conservation Division**  
**1220 S. St Francis Dr.**  
**Santa Fe, NM 87505**

Form C-101  
August 1, 2011  
Permit 271824

**APPLICATION FOR PERMIT TO DRILL, RE-ENTER, DEEPEN, PLUGBACK, OR ADD A ZONE**

1. Operator Name and Address MEWBOURNE OIL CO P.O. Box 5270 Hobbs, NM 88241		2. OGRID Number 14744
4. Property Code 326169		3. API Number 30-015-46337
5. Property Name STYX 17 W0PA FEE		6. Well No. 001H

**7. Surface Location**

UL - Lot	Section	Township	Range	Lot Idn	Feet From	N/S Line	Feet From	E/W Line	County
A	20	23S	28E	A	272	N	326	E	Eddy

**8. Proposed Bottom Hole Location**

UL - Lot	Section	Township	Range	Lot Idn	Feet From	N/S Line	Feet From	E/W Line	County
A	17	23S	28E	A	330	N	330	E	Eddy

**9. Pool Information**

PURPLE SAGE;WOLFCAMP (GAS)	98220
----------------------------	-------

**Additional Well Information**

11. Work Type New Well	12. Well Type GAS	13. Cable/Rotary	14. Lease Type Private	15. Ground Level Elevation 3037
16. Multiple N	17. Proposed Depth 14417	18. Formation Wolfcamp	19. Contractor	20. Spud Date 10/26/2019
Depth to Ground water		Distance from nearest fresh water well		Distance to nearest surface water

☒ We will be using a closed-loop system in lieu of lined pits

**21. Proposed Casing and Cement Program**

Type	Hole Size	Casing Size	Casing Weight/ft	Setting Depth	Sacks of Cement	Estimated TOC
Surf	17.5	13.375	48	420	350	0
Int1	12.25	9.625	36	2410	540	0
Prod	8.75	7	29	9600	880	2210
Liner1	6.125	4.5	13.5	14417	220	9003

**Casing/Cement Program: Additional Comments**

MOC proposed to drill & test the Wolfcamp formation. H2S rule 118 does not apply because MOC has researched the area & no high concentrations were found. Will have on location & working all H2S safety equipment before Yates formation for safety & insurance purposes. Will stimulate as needed for production.
---

**22. Proposed Blowout Prevention Program**

Type	Working Pressure	Test Pressure	Manufacturer
Annular	5000	2500	Schaffer
Double Ram	5000	5000	Schaffer
Annular	5000	2500	Schaffer

23. I hereby certify that the information given above is true and complete to the best of my knowledge and belief. I further certify I have complied with 19.15.14.9 (A) NMAC <input checked="" type="checkbox"/> and/or 19.15.14.9 (B) NMAC <input checked="" type="checkbox"/> if applicable.  Signature:	<b>OIL CONSERVATION DIVISION</b>
Printed Name: Electronically filed by Monty Whetstone	Approved By: Raymond Podany
Title: Vice President Operations	Title: Geologist
Email Address: prodmgr@mewbourne.com	Approved Date: 10/4/2019      Expiration Date: 10/4/2021
Date: 9/27/2019      Phone: 903-561-2900	Conditions of Approval Attached



**District I**  
1625 N. French Dr., Hobbs, NM 88240  
Phone:(575) 393-6161 Fax:(575) 393-0720  
**District II**  
811 S. First St., Artesia, NM 88210  
Phone:(575) 748-1283 Fax:(575) 748-9720  
**District III**  
1000 Rio Brazos Rd., Aztec, NM 87410  
Phone:(505) 334-6178 Fax:(505) 334-6170  
**District IV**  
1220 S. St Francis Dr., Santa Fe, NM 87505  
Phone:(505) 476-3470 Fax:(505) 476-3462

**State of New Mexico**  
**Energy, Minerals and Natural Resources**  
**Oil Conservation Division**  
**1220 S. St Francis Dr.**  
**Santa Fe, NM 87505**

**GAS CAPTURE PLAN**

Date: 10/4/2019

☒ Original

Operator & OGRID No.: [14744] MEWBOURNE OIL CO

☐ Amended - Reason for  
Amendment: \_\_\_\_\_

This Gas Capture Plan outlines actions to be taken by the Operator to reduce well/production facility flaring/venting for new completion (new drill, recomple to new zone, re-frac) activity.

*Note: Form C-129 must be submitted and approved prior to exceeding 60 days allowed by Rule (Subsection A of 19.15.18.12 NMAC).*

**Well(s)/Production Facility – Name of facility**

The well(s) that will be located at the production facility are shown in the table below.

Well Name	API	Well Location (ULSTR)	Footages	Expected MCF/D	Flared or Vented	Comments
STYX 17 WOPA FEE #001H	30-015-46337	A-20-23S-28E	0272N 0326E	500	None	ONLINE AFTER FRAC

**Gathering System and Pipeline Notification**

Well(s) will be connected to a production facility after flowback operations are complete, if gas transporter system is in place. The gas produced from production facility is dedicated to Enterprise Field Services, LLC and will be connected to Enterprise Field Services, LLC High Pressure gathering system located in Eddy County, New Mexico. It will require 3400' of pipeline to connect the facility to High Pressure gathering system. MEWBOURNE OIL CO provides (periodically) to Enterprise Field Services, LLC a drilling, completion and estimated first production date for wells that are scheduled to be drilled in the foreseeable future. In addition, MEWBOURNE OIL CO and Enterprise Field Services, LLC have periodic conference calls to discuss changes to drilling and completion schedules. Gas from these wells will be processed at Enterprise Field Services, LLC Processing Plant located in Sec. 17, Twn. 19S, Rng. 31E, Eddy County, New Mexico. The actual flow of the gas will be based on compression operating parameters and gathering system pressures.

**Flowback Strategy**

After the fracture treatment/completion operations, well(s) will be produced to temporary production tanks and gas will be flared or vented. During flowback, the fluids and sand content will be monitored. When the produced fluids contain minimal sand, the wells will be turned to production facilities. Gas sales should start as soon as the wells start flowing through the production facilities, unless there are operational issues on Enterprise Field Services, LLC system at that time. Based on current information, it is MEWBOURNE OIL CO's belief the system can take this gas upon completion of the well(s).

Safety requirements during cleanout operations from the use of underbalanced air cleanout systems may necessitate that sand and non-pipeline quality gas be vented and/or flared rather than sold on a temporary basis.

**Alternatives to Reduce Flaring**

Below are alternatives considered from a conceptual standpoint to reduce the amount of gas flared.

- Power Generation – On lease
  - Only a portion of gas is consumed operating the generator, remainder of gas will be flared
- Compressed Natural Gas – On lease
  - Gas flared would be minimal, but might be uneconomical to operate when gas volume declines
- NGL Removal – On lease
  - Plants are expensive, residue gas is still flared, and uneconomical to operate when gas volume declines

**District I**  
1625 N. French Dr., Hobbs, NM 88240  
Phone:(575) 393-6161 Fax:(575) 393-0720

**District II**  
811 S. First St., Artesia, NM 88210  
Phone:(575) 748-1283 Fax:(575) 748-9720

**District III**  
1000 Rio Brazos Rd., Aztec, NM 87410  
Phone:(505) 334-6178 Fax:(505) 334-6170

**District IV**  
1220 S. St Francis Dr., Santa Fe, NM 87505  
Phone:(505) 476-3470 Fax:(505) 476-3462

**State of New Mexico**  
**Energy, Minerals and Natural Resources**  
**Oil Conservation Division**  
**1220 S. St Francis Dr.**  
**Santa Fe, NM 87505**

Form APD Comments

Permit 271824

**PERMIT COMMENTS**

Operator Name and Address: MEWBOURNE OIL CO [14744] P.O. Box 5270 Hobbs, NM 88241		API Number: 30-015-46337
		Well: STYX 17 W0PA FEE #001H

Created By	Comment	Comment Date
------------	---------	--------------

**District I**  
1625 N. French Dr., Hobbs, NM 88240  
Phone:(575) 393-6161 Fax:(575) 393-0720  
**District II**  
811 S. First St., Artesia, NM 88210  
Phone:(575) 748-1283 Fax:(575) 748-9720  
**District III**  
1000 Rio Brazos Rd., Aztec, NM 87410  
Phone:(505) 334-6178 Fax:(505) 334-6170  
**District IV**  
1220 S. St Francis Dr., Santa Fe, NM 87505  
Phone:(505) 476-3470 Fax:(505) 476-3462

**State of New Mexico**  
**Energy, Minerals and Natural Resources**  
**Oil Conservation Division**  
**1220 S. St Francis Dr.**  
**Santa Fe, NM 87505**

Form APD Conditions  
  
Permit 271824

**PERMIT CONDITIONS OF APPROVAL**

Operator Name and Address: MEWBOURNE OIL CO [14744] P.O. Box 5270 Hobbs, NM 88241		API Number: 30-015-46337
		Well: STYX 17 W0PA FEE #001H
OCD Reviewer	Condition	
rpodany	Will require a directional survey with the C-104	
rpodany	Cement is required to circulate on both surface and intermediate1 strings of casing	

District I  
1625 N. French Dr., Hobbs, NM 88240  
Phone: (575) 393-6161 Fax: (575) 393-0720  
District II  
811 S. First St., Artesia, NM 88210  
Phone: (575) 748-1283 Fax: (575) 748-9720  
District III  
1000 Rio Brazos Road, Aztec, NM 87410  
Phone: (505) 334-6178 Fax: (505) 334-6170  
District IV  
1220 S. St. Francis Dr., Santa Fe, NM 87505  
Phone: (505) 476-3460 Fax: (505) 476-3462

State of New Mexico  
Energy, Minerals & Natural Resources Department  
OIL CONSERVATION DIVISION  
1220 South St. Francis Dr.  
Santa Fe, NM 87505

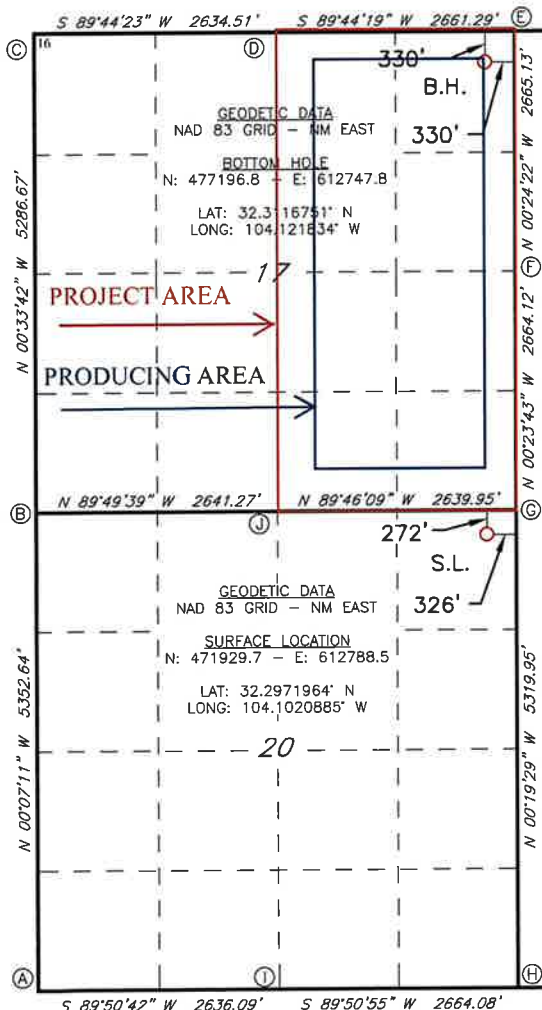
Form C-102  
Revised August 1, 2011  
Submit one copy to appropriate  
District Office

☐ AMENDED REPORT

WELL LOCATION AND ACREAGE DEDICATION PLAT

<sup>1</sup> API Number		<sup>2</sup> Pool Code		<sup>3</sup> Pool Name					
		98220		PURPLE SAGE; WOLFCAMP GAS POOL					
<sup>4</sup> Property Code		<sup>5</sup> Property Name						<sup>6</sup> Well Number	
		STYX 17 WOPA FEE						1H	
<sup>7</sup> OGRID NO.		<sup>8</sup> Operator Name						<sup>9</sup> Elevation	
14744		MEWBOURNE OIL COMPANY						3037'	
<sup>10</sup> Surface Location									
UL or lot no.	Section	Township	Range	Lot Idn	Feet from the	North/South line	Feet From the	East/West line	County
A	20	23S	28E		272	NORTH	326	EAST	EDDY
<sup>11</sup> Bottom Hole Location If Different From Surface									
UL or lot no.	Section	Township	Range	Lot Idn	Feet from the	North/South line	Feet from the	East/West line	County
A	17	23S	28E		330	NORTH	330	EAST	EDDY
<sup>12</sup> Dedicated Acres		<sup>13</sup> Joint or Infill		<sup>14</sup> Consolidation Code		<sup>15</sup> Order No.			
320									

No allowable will be assigned to this completion until all interest have been consolidated or a non-standard unit has been approved by the division.



<sup>17</sup> OPERATOR CERTIFICATION

I hereby certify that the information contained herein is true and complete to the best of my knowledge and belief, and that this organization either owns a working interest or unleased mineral interest in the land including the proposed bottom hole location or has a right to drill this well at this location pursuant to a contract with an owner of such a mineral or working interest, or to a voluntary pooling agreement or a compulsory pooling order heretofore entered by the division.

Signature: *Bradley Bishop* Date: 9-5-19  
Printed Name: BRADLEY BISHOP  
E-mail Address: BBISHOP@MEWBOURNE.COM

<sup>18</sup> SURVEYOR CERTIFICATION

I hereby certify that the well location shown on this plat was plotted from field notes of actual surveys made by me or under my supervision, and that the same is true and correct to the best of my belief.

8-14-2019  
Date of Survey  
Signature and Seal of Professional Surveyor: *Robert M. Howett*  
19680  
Certificate Number

Job No: LS19080824

Intent ☒ As Drilled ☐

API #		
Operator Name: Mewbourne Oil Co.	Property Name: Styx 17 W0PA Fee	Well Number 1H

Kick Off Point (KOP)

UL A	Section 20	Township 23S	Range 28E	Lot	Feet 145	From N/S N	Feet 330	From E/W E	County Eddy
Latitude 32.2975437					Longitude -104.1021023				NAD 83

First Take Point (FTP)

UL A	Section 17	Township 23S	Range 28E	Lot	Feet 330	From N/S S	Feet 330	From E/W E	County Eddy
Latitude 32.2985105					Longitude -104.1021078				NAD 83

Last Take Point (LTP)

UL P	Section 17	Township 23S	Range 28E	Lot	Feet 330	From N/S N	Feet 330	From E/W E	County Eddy
Latitude 32.3116752					Longitude -104.1021836				NAD 83

Is this well the defining well for the Horizontal Spacing Unit? ☐ N

Is this well an infill well? ☐

If infill is yes please provide API if available, Operator Name and well number for Defining well for Horizontal Spacing Unit.

API #		
Operator Name: Mewbourne Oil Company	Property Name: Styx 17 W0OB Fee	Well Number 1H

KZ 06/29/2018

Intent ☒ As Drilled ☐

API #

Operator Name:  
Mewbourne Oil Co.

Property Name:  
Styx 17 W0PA Fee

Well Number  
1H

Kick Off Point (KOP)

UL	Section	Township	Range	Lot	Feet	From N/S	Feet	From E/W	County
A	20	23S	28E		145	N	330	E	Eddy
Latitude					Longitude				NAD
32.2975437					-104.1021023				83

First Take Point (FTP)

UL	Section	Township	Range	Lot	Feet	From N/S	Feet	From E/W	County
A	17	23S	28E		330	S	330	E	Eddy
Latitude					Longitude				NAD
32.2985105					-104.1021078				83

Last Take Point (LTP)

UL	Section	Township	Range	Lot	Feet	From N/S	Feet	From E/W	County
P	17	23S	28E		330	N	330	E	Eddy
Latitude					Longitude				NAD
32.3116752					-104.1021836				83

Is this well the defining well for the Horizontal Spacing Unit? ☐ N

Is this well an infill well? ☐

If infill is yes please provide API if available, Operator Name and well number for Defining well for Horizontal Spacing Unit.

API #

Operator Name:  
Mewbourne Oil Company

Property Name:  
Styx 17 W0OB Fee

Well Number  
1H

KZ 06/29/2018