

DISTRICT I1825 N. French Dr., Hobbs, N.M. 88240
Phone: (575) 393-6161 Fax: (575) 393-0720**DISTRICT II**811 S. First St., Artesia, N.M. 88210
Phone: (575) 748-1283 Fax: (575) 748-9720**DISTRICT III**1000 Rio Brazos Rd., Aztec, N.M. 87410
Phone: (505) 334-6178 Fax: (505) 334-6170**DISTRICT IV**1220 S. St. Francis Dr., Santa Fe, N.M. 87505
Phone: (505) 476-3480 Fax: (505) 476-3482State of New Mexico
Energy, Minerals & Natural Resources Department

OIL CONSERVATION DIVISION

1220 South St. Francis Dr.
Santa Fe, N.M. 87505

Form C-102

Revised August 1, 2011

Submit one copy to appropriate
District Office

AS-DRILLED

☒ AMENDED REPORT

WELL LOCATION AND ACREAGE DEDICATION PLAT

¹ API Number 30-039-24326	² Pool Code 71629	³ Pool Name BASIN FRUITLAND COAL
⁴ Property Code 327799	⁵ Property Name NEBU	⁶ Well Number 427
⁷ GRID No. 10749	⁸ Operator Name BP America Production Company	⁹ Elevation 6252

¹⁰ Surface Location

UL or lot no.	Section	Township	Range	Lot Idn	Feet from the	North/South line	Feet from the	East/West line	County
M	16	30 N	07 W		1068	SOUTH	1245	WEST	RIO ARriba

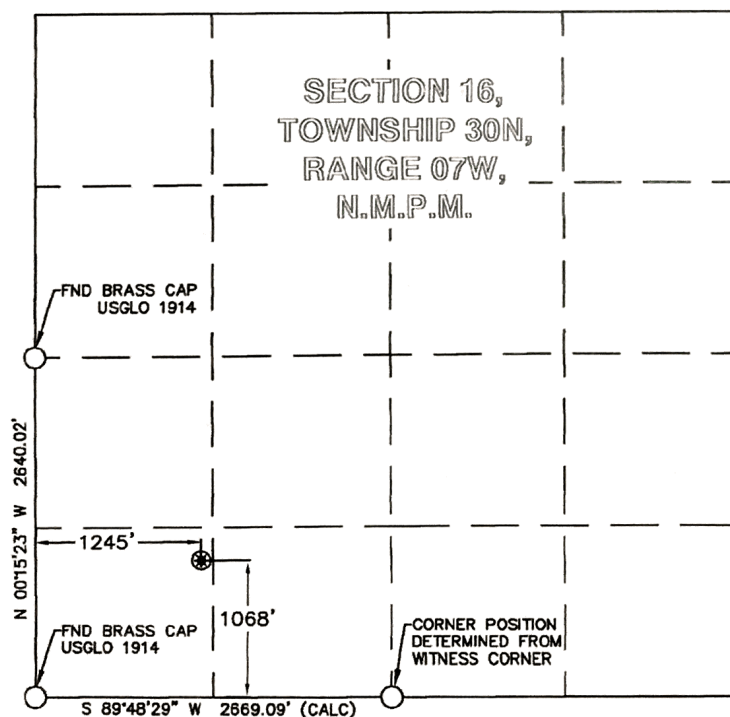
¹¹ Bottom Hole Location If Different From Surface

UL or lot no.	Section	Township	Range	Lot Idn	Feet from the	North/South line	Feet from the	East/West line	County

¹² Dedicated Acres	¹³ Joint or Infill	¹⁴ Consolidation Code	¹⁵ Order No.

NO ALLOWABLE WILL BE ASSIGNED TO THIS COMPLETION UNTIL ALL INTERESTS HAVE BEEN CONSOLIDATED
OR A NON-STANDARD UNIT HAS BEEN APPROVED BY THE DIVISION

16



LEGEND

FOUND MONUMENT O

AS-DRILLED SURFACE HOLE LOCATION *

NEBU 427	NMSPC ZONE 3003	NAD'83	TIES
AS-DRILLED SURFACE HOLE LOCATION (SHL)	N (Y) = 2,113,644.33' E (X) = 2,796,925.94'	LAT. = 36.8083136°N LON. = 107.5811152°W	FSL = 1068' FWL = 1245'

¹⁷ OPERATOR CERTIFICATION

I hereby certify that the information contained herein is true and complete to the best of my knowledge and belief, and that this organization either owns a working interest or unleased mineral interest in the land including the proposed bottom hole location or has a right to drill this well at this location pursuant to a contract with an owner of such a mineral or working interest, or to a voluntary pooling agreement or a compulsory pooling order heretofore entered by the division.

Patti Campbell 12/10/2020
Signature Date

Patti Campbell

Printed Name

patricia.campbell@ikavenergy.com

E-mail Address

¹⁸ SURVEYOR CERTIFICATION

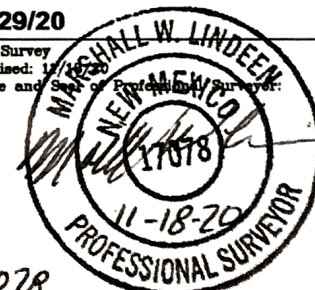
I hereby certify that the well location shown on this plat was plotted from field notes of actual surveys made by me or under my supervision, and that the same is true and correct to the best of my belief.

10/29/20

Date of Survey

Plat Revised: 12/10/20

Signature and Seal of Professional Surveyor:

17078
Certificate Number

District I
1625 N. French Dr., Hobbs, NM 88240
Phone:(575) 393-6161 Fax:(575) 393-0720
District II
811 S. First St., Artesia, NM 88210
Phone:(575) 748-1283 Fax:(575) 748-9720
District III
1000 Rio Brazos Rd., Aztec, NM 87410
Phone:(505) 334-6178 Fax:(505) 334-6170
District IV
1220 S. St Francis Dr., Santa Fe, NM 87505
Phone:(505) 476-3470 Fax:(505) 476-3462

State of New Mexico
Energy, Minerals and Natural Resources
Oil Conservation Division
1220 S. St Francis Dr.
Santa Fe, NM 87505

CONDITIONS

Action 11747

CONDITIONS OF APPROVAL

Operator:	SIMCOE LLC1199 Main Ave., Suite 101Durango, CO81301			OGRID:	329736	Action Number:	11747	Action Type:	C-102
OCD Reviewer	Condition								
ahvermersch	File sundry to notify the BLM of resurvey and location change								