

Form 3160-3  
(June 2015)UNITED STATES  
DEPARTMENT OF THE INTERIOR  
BUREAU OF LAND MANAGEMENT

## APPLICATION FOR PERMIT TO DRILL OR REENTER

FORM APPROVED  
OMB No. 1004-0137  
Expires: January 31, 2018

1a. Type of work: <input checked="" type="checkbox"/> DRILL <input type="checkbox"/> REENTER		5. Lease Serial No. NMNM0000587
1b. Type of Well: <input checked="" type="checkbox"/> Oil Well <input type="checkbox"/> Gas Well <input type="checkbox"/> Other		6. If Indian, Allottee or Tribe Name
1c. Type of Completion: <input type="checkbox"/> Hydraulic Fracturing <input checked="" type="checkbox"/> Single Zone <input type="checkbox"/> Multiple Zone		7. If Unit or CA Agreement, Name and No. BELL LAKE / NMNM 068292X
2. Name of Operator KAISER FRANCIS OIL COMPANY [12361]		8. Lease Name and Well No. BELL LAKE UNIT NORTH [316707] 407H
3a. Address 6733 S. Yale Ave., Tulsa, OK 74121	3b. Phone No. (include area code) (918) 491-0000	9. API Well No. 30-025-48553
4. Location of Well (Report location clearly and in accordance with any State requirements. *) At surface LOT 5 / 2005 FNL / 1073 FWL / LAT 32.3351667 / LONG -103.5140298 At proposed prod. zone LOT 4 / 100 FSL / 350 FWL / LAT 32.312154 / LONG -103.51638		10. Field and Pool, or Exploratory [98265] OJO CHISO/WOLFCAMP, SOUTHWEST
11. Sec., T. R. M. or Blk. and Survey or Area SEC 6/T23S/R34E/NMP		
14. Distance in miles and direction from nearest town or post office* 20 miles		12. County or Parish LEA
13. State NM		
15. Distance from proposed* location to nearest property or lease line, ft. (Also to nearest drig. unit line, if any) 635 feet	16. No of acres in lease	17. Spacing Unit dedicated to this well 480.0
18. Distance from proposed location* to nearest well, drilling, completed, applied for, on this lease, ft. 30 feet	19. Proposed Depth 11700 feet / 19800 feet	20. BLM/BIA Bond No. in file FED: WYB000055
21. Elevations (Show whether DF, KDB, RT, GL, etc.) 3481 feet	22. Approximate date work will start* 07/01/2020	23. Estimated duration 40 days
24. Attachments		

The following, completed in accordance with the requirements of Onshore Oil and Gas Order No. 1, and the Hydraulic Fracturing rule per 43 CFR 3162.3-3 (as applicable)

- |  |   |
|--|---|
| 1. Well plat certified by a registered surveyor.   | 4. Bond to cover the operations unless covered by an existing bond on file (see Item 20 above). |
| 2. A Drilling Plan.  | 5. Operator certification.  |
| 3. A Surface Use Plan (if the location is on National Forest System Lands, the SUPO must be filed with the appropriate Forest Service Office). | 6. Such other site specific information and/or plans as may be requested by the BLM.            |

25. Signature (Electronic Submission)	Name (Printed/Typed) MELANIE WILSON / Ph: (918) 491-0000	Date 02/03/2020
Title Regulatory Analyst		
Approved by (Signature) (Electronic Submission)	Name (Printed/Typed) Cody Layton / Ph: (575) 234-5959	Date 12/14/2020
Title Assistant Field Manager Lands & Minerals		
Office Carlsbad Field Office		

Application approval does not warrant or certify that the applicant holds legal or equitable title to those rights in the subject lease which would entitle the applicant to conduct operations thereon.

Conditions of approval, if any, are attached.

Title 18 U.S.C. Section 1001 and Title 43 U.S.C. Section 1212, make it a crime for any person knowingly and willfully to make to any department or agency of the United States any false, fictitious or fraudulent statements or representations as to any matter within its jurisdiction.

GCP Rec 03/12/2021

SL

(Continued on page 2)

KZ  
03/12/2021

\*(Instructions on page 2)

## PECOS DISTRICT DRILLING CONDITIONS OF APPROVAL

<b>OPERATOR'S NAME:</b>	<b>KAISER FRANCIS OIL COMPANY</b>
<b>LEASE NO.:</b>	<b>NMNM0000587</b>
<b>WELL NAME &amp; NO.:</b>	<b>BELL LAKE UNIT NORTH 407H</b>
<b>SURFACE HOLE FOOTAGE:</b>	<b>2005'/N &amp; 1073'/W</b>
<b>BOTTOM HOLE FOOTAGE:</b>	<b>100'/S &amp; 350'/W</b>
<b>LOCATION:</b>	<b>Section 6, T.23 S., R.34 E., NMPM</b>
<b>COUNTY:</b>	<b>Lea County, New Mexico</b>

COA

H2S	<input type="radio"/> Yes	<input checked="" type="radio"/> No	
Potash	<input checked="" type="radio"/> None	<input type="radio"/> Secretary	<input type="radio"/> R-111-P
Cave/Karst Potential	<input checked="" type="radio"/> Low	<input type="radio"/> Medium	<input type="radio"/> High
Cave/Karst Potential	<input type="radio"/> Critical		
Variance	<input type="radio"/> None	<input checked="" type="radio"/> Flex Hose	<input type="radio"/> Other
Wellhead	<input type="radio"/> Conventional	<input checked="" type="radio"/> Multibowl	<input type="radio"/> Both
Other	<input type="checkbox"/> 4 String Area	<input type="checkbox"/> Capitan Reef	<input type="checkbox"/> WIPP
Other	<input type="checkbox"/> Fluid Filled	<input type="checkbox"/> Cement Squeeze	<input type="checkbox"/> Pilot Hole
Special Requirements	<input type="checkbox"/> Water Disposal	<input type="checkbox"/> COM	<input checked="" type="checkbox"/> Unit

### A. HYDROGEN SULFIDE

Hydrogen Sulfide (H2S) monitors shall be installed prior to drilling out the surface shoe. If H2S is detected in concentrations greater than 100 ppm, the Hydrogen Sulfide area shall meet Onshore Order 6 requirements, which includes equipment and personnel/public protection items. If Hydrogen Sulfide is encountered, provide measured values and formations to the BLM.

### B. CASING

1. The **10-3/4** inch surface casing shall be set at approximately **1250 feet** (a minimum of 25 feet (Lea County) into the Rustler Anhydrite and above the salt) and cemented to the surface.
  - a. If cement does not circulate to the surface, the appropriate BLM office shall be notified and a temperature survey utilizing an electronic type temperature survey with surface log readout will be used or a cement bond log shall be run to verify the top of the cement. Temperature survey will be run a minimum of six hours after pumping cement and ideally between 8-10 hours after completing the cement job.
  - b. Wait on cement (WOC) time for a primary cement job will be a minimum of **8**

**hours** or 500 pounds compressive strength, whichever is greater. (This is to include the lead cement)

- c. Wait on cement (WOC) time for a remedial job will be a minimum of 4 hours after bringing cement to surface or 500 pounds compressive strength, whichever is greater.
  - d. If cement falls back, remedial cementing will be done prior to drilling out that string.
2. The 7-5/8 inch intermediate casing shall be set at **11065 feet**. The minimum required fill of cement behind the 7-5/8 inch intermediate casing is:

**Option 1 (Single Stage):**

- Cement to surface. If cement does not circulate see B.1.a, c-d above. **Wait on cement (WOC) time for a primary cement job is to include the lead cement slurry due to cave/karst or potash.**
- **Excess cement calculates to less than 25% ; More cement may be needed.**

3. The minimum required fill of cement behind the 5-1/2 inch production casing is:

**Option 1 (Single Stage):**

- Cement should tie-back at least **200 feet** into previous casing string. Operator shall provide method of verification.

**C. PRESSURE CONTROL**

1. Variance approved to use flex line from BOP to choke manifold. Manufacturer's specification to be readily available. No external damage to flex line. Flex line to be installed as straight as possible (no hard bends).

## 2. BOP Requirements

### Option 1

- a. Minimum working pressure of the blowout preventer (BOP) and related equipment (BOPE) required for drilling below the surface casing shoe shall be **5000 (5M)** psi.
- b. Minimum working pressure of the blowout preventer (BOP) and related equipment (BOPE) required for drilling below the intermediate casing shoe shall be **10,000 (10M)** psi.

### Option 2

Operator has proposed a multi-bowl wellhead assembly. This assembly will only be tested when installed on the surface casing. Minimum working pressure of the blowout preventer (BOP) and related equipment (BOPE) required for drilling below the surface casing shoe shall be **10,000 (10M)** psi. **Variance is approved to use a 5000 (5M) Annular which shall be tested to 5000 (5M) psi.**

- a. Wellhead shall be installed by manufacturer's representatives, submit documentation with subsequent sundry.
- b. If the welding is performed by a third party, the manufacturer's representative shall monitor the temperature to verify that it does not exceed the maximum temperature of the seal.
- c. Manufacturer representative shall install the test plug for the initial BOP test.
- d. If the cement does not circulate and one inch operations would have been possible with a standard wellhead, the well head shall be cut off, cementing operations performed and another wellhead installed.
- e. Whenever any seal subject to test pressure is broken, all the tests in OOGO2.III.A.2.i must be followed.

## D. SPECIAL REQUIREMENT (S)

### Unit Wells

The well sign for a unit well shall include the unit number in addition to the surface and bottom hole lease numbers. This also applies to participating area numbers. If a participating area has not been established, the operator can use the general unit designation, but will replace the unit number with the participating area number when the sign is replaced.

**Commercial Well Determination**

A commercial well determination shall be submitted after production has been established for at least six months. (This is not necessary for secondary recovery unit wells)

**GENERAL REQUIREMENTS**

The BLM is to be notified in advance for a representative to witness:

- a. Spudding well (minimum of 24 hours)
- b. Setting and/or Cementing of all casing strings (minimum of 4 hours)
- c. BOPE tests (minimum of 4 hours)

☒ Eddy County

Call the Carlsbad Field Office, 620 East Greene St., Carlsbad, NM 88220,  
(575) 361-2822

☒ Lea County

Call the Hobbs Field Station, 414 West Taylor, Hobbs NM 88240, (575)  
393-3612

1. Unless the production casing has been run and cemented or the well has been properly plugged, the drilling rig shall not be removed from over the hole without prior approval.
  - a. In the event the operator has proposed to drill multiple wells utilizing a skid/walking rig. Operator shall secure the wellbore on the current well, after installing and testing the wellhead, by installing a blind flange of like pressure rating to the wellhead and a pressure gauge that can be monitored while drilling is performed on the other well(s).
  - b. When the operator proposes to set surface casing with Spudder Rig
    - Notify the BLM when moving in and removing the Spudder Rig.
    - Notify the BLM when moving in the 2<sup>nd</sup> Rig. Rig to be moved in within 90 days of notification that Spudder Rig has left the location.
    - BOP/BOPE test to be conducted per Onshore Oil and Gas Order No. 2 as soon as 2nd Rig is rigged up on well.
2. Floor controls are required for 3M or Greater systems. These controls will be on the rig floor, unobstructed, readily accessible to the driller and will be operational at all times during drilling and/or completion activities. Rig floor is defined as the area immediately around the rotary table; the area immediately above the substructure on



which the draw works are located, this does not include the dog house or stairway area.

3. The record of the drilling rate along with the GR/N well log run from TD to surface (horizontal well – vertical portion of hole) shall be submitted to the BLM office as well as all other logs run on the borehole 30 days from completion. If available, a digital copy of the logs is to be submitted in addition to the paper copies. The Rustler top and top and bottom of Salt are to be recorded on the Completion Report.

A. CASING

1. Changes to the approved APD casing program need prior approval if the items substituted are of lesser grade or different casing size or are Non-API. The Operator can exchange the components of the proposal with that of superior strength (i.e. changing from J-55 to N-80, or from 36# to 40#). Changes to the approved cement program need prior approval if the altered cement plan has less volume or strength or if the changes are substantial (i.e. Multistage tool, ECP, etc.). The initial wellhead installed on the well will remain on the well with spools used as needed.
2. Wait on cement (WOC) for Potash Areas: After cementing but before commencing any tests, the casing string shall stand cemented under pressure until both of the following conditions have been met: 1) cement reaches a minimum compressive strength of 500 psi for all cement blends, 2) until cement has been in place at least 24 hours. WOC time will be recorded in the driller's log. The casing integrity test can be done (prior to the cement setting up) immediately after bumping the plug.
3. Wait on cement (WOC) for Water Basin: After cementing but before commencing any tests, the casing string shall stand cemented under pressure until both of the following conditions have been met: 1) cement reaches a minimum compressive strength of 500 psi at the shoe, 2) until cement has been in place at least 8 hours. WOC time will be recorded in the driller's log. See individual casing strings for details regarding lead cement slurry requirements. The casing integrity test can be done (prior to the cement setting up) immediately after bumping the plug.
4. Provide compressive strengths including hours to reach required 500 pounds compressive strength prior to cementing each casing string. Have well specific cement details onsite prior to pumping the cement for each casing string.
5. No pea gravel permitted for remedial or fall back remedial without prior authorization from the BLM engineer.
6. On that portion of any well approved for a 5M BOPE system or greater, a pressure integrity test of each casing shoe shall be performed. Formation at the shoe shall be tested to a minimum of the mud weight equivalent anticipated to control the formation pressure to the next casing depth or at total depth of the well. This test shall be performed before drilling more than 20 feet of new hole.

7. If hardband drill pipe is rotated inside casing, returns will be monitored for metal. If metal is found in samples, drill pipe will be pulled and rubber protectors which have a larger diameter than the tool joints of the drill pipe will be installed prior to continuing drilling operations.
8. Whenever a casing string is cemented in the R-111-P potash area, the NMOCD requirements shall be followed.

**B. PRESSURE CONTROL**

1. All blowout preventer (BOP) and related equipment (BOPE) shall comply with well control requirements as described in Onshore Oil and Gas Order No. 2 and API RP 53 Sec. 17.
2. If a variance is approved for a flexible hose to be installed from the BOP to the choke manifold, the following requirements apply: The flex line must meet the requirements of API 16C. Check condition of flexible line from BOP to choke manifold, replace if exterior is damaged or if line fails test. Line to be as straight as possible with no hard bends and is to be anchored according to Manufacturer's requirements. The flexible hose can be exchanged with a hose of equal size and equal or greater pressure rating. Anchor requirements, specification sheet and hydrostatic pressure test certification matching the hose in service, to be onsite for review. These documents shall be posted in the company man's trailer and on the rig floor.
3. 5M or higher system requires an HCR valve, remote kill line and annular to match. The remote kill line is to be installed prior to testing the system and tested to stack pressure.
4. If the operator has proposed a multi-bowl wellhead assembly in the APD. The following requirements must be met:
  - a. Wellhead shall be installed by manufacturer's representatives, submit documentation with subsequent sundry.
  - b. If the welding is performed by a third party, the manufacturer's representative shall monitor the temperature to verify that it does not exceed the maximum temperature of the seal.
  - c. Manufacturer representative shall install the test plug for the initial BOP test.
  - d. Whenever any seal subject to test pressure is broken, all the tests in OOGO2.III.A.2.i must be followed.
  - e. If the cement does not circulate and one inch operations would have been possible with a standard wellhead, the well head shall be cut off, cementing operations performed and another wellhead installed.

5. The appropriate BLM office shall be notified a minimum of 4 hours in advance for a representative to witness the tests.
- a. In a water basin, for all casing strings utilizing slips, these are to be set as soon as the crew and rig are ready and any fallback cement remediation has been done. The casing cut-off and BOP installation can be initiated four hours after installing the slips, which will be approximately six hours after bumping the plug. For those casing strings not using slips, the minimum wait time before cut-off is eight hours after bumping the plug. BOP/BOPE testing can begin after cut-off or once cement reaches 500 psi compressive strength (including lead when specified), whichever is greater. However, if the float does not hold, cut-off cannot be initiated until cement reaches 500 psi compressive strength (including lead when specified).
  - b. In potash areas, for all casing strings utilizing slips, these are to be set as soon as the crew and rig are ready and any fallback cement remediation has been done. For all casing strings, casing cut-off and BOP installation can be initiated at twelve hours after bumping the plug. However, **no tests** shall commence until the cement has had a minimum of 24 hours setup time, except the casing pressure test can be initiated immediately after bumping the plug (only applies to single stage cement jobs).
  - c. The tests shall be done by an independent service company utilizing a test plug not a cup or J-packer. The operator also has the option of utilizing an independent tester to test without a plug (i.e. against the casing) pursuant to Onshore Order 2 with the pressure not to exceed 70% of the burst rating for the casing. Any test against the casing must meet the WOC time for water basin (8 hours) or potash (24 hours) or 500 pounds compressive strength, whichever is greater, prior to initiating the test (see casing segment as lead cement may be critical item).
  - d. The test shall be run on a 5000 psi chart for a 2-3M BOP/BOP, on a 10000 psi chart for a 5M BOP/BOPE and on a 15000 psi chart for a 10M BOP/BOPE. If a linear chart is used, it shall be a one hour chart. A circular chart shall have a maximum 2 hour clock. If a twelve hour or twenty-four hour chart is used, tester shall make a notation that it is run with a two hour clock.
  - e. The results of the test shall be reported to the appropriate BLM office.
  - f. All tests are required to be recorded on a calibrated test chart. A copy of the BOP/BOPE test chart and a copy of independent service company test will be submitted to the appropriate BLM office.
  - g. The BOP/BOPE test shall include a low pressure test from 250 to 300 psi. The test will be held for a minimum of 10 minutes if test is done with a test plug and 30 minutes without a test plug. This test shall be performed prior to



the test at full stack pressure.

- h. BOP/BOPE must be tested by an independent service company within 500 feet of the top of the Wolfcamp formation if the time between the setting of the intermediate casing and reaching this depth exceeds 20 days. This test does not exclude the test prior to drilling out the casing shoe as per Onshore Order No. 2.

**C. DRILLING MUD**

Mud system monitoring equipment, with derrick floor indicators and visual and audio alarms, shall be operating before drilling into the Wolfcamp formation, and shall be used until production casing is run and cemented.

**D. WASTE MATERIAL AND FLUIDS**

All waste (i.e. drilling fluids, trash, salts, chemicals, sewage, gray water, etc.) created as a result of drilling operations and completion operations shall be safely contained and disposed of properly at a waste disposal facility. No waste material or fluid shall be disposed of on the well location or surrounding area.

Porto-johns and trash containers will be on-location during fracturing operations or any other crew-intensive operations.

**RI12072020**



U.S. Department of the Interior  
BUREAU OF LAND MANAGEMENT

## Application Data Report

01/22/2021

**APD ID:** 10400053835

**Submission Date:** 02/03/2020

Highlighted data  
reflects the most  
recent changes

**Operator Name:** KAISER FRANCIS OIL COMPANY

**Well Name:** BELL LAKE UNIT NORTH

**Well Number:** 407H

[Show Final Text](#)

**Well Type:** OIL WELL

**Well Work Type:** Drill

### Section 1 - General

**APD ID:** 10400053835

**Tie to previous NOS?** N

**Submission Date:** 02/03/2020

**BLM Office:** CARLSBAD

**User:** Melanie Wilson

**Title:** Regulatory Analyst

**Federal/Indian APD:** FED

**Is the first lease penetrated for production Federal or Indian?** FED

**Lease number:** NMNM0000587

**Lease Acres:**

**Surface access agreement in place?**

**Allotted?**

**Reservation:**

**Agreement in place?** YES

**Federal or Indian agreement:** FEDERAL

**Agreement number:** NMNM068292X

**Agreement name:** BELL LAKE

**Keep application confidential?** Y

**Permitting Agent?** YES

**APD Operator:** KAISER FRANCIS OIL COMPANY

**Operator letter of designation:**

### Operator Info

**Operator Organization Name:** KAISER FRANCIS OIL COMPANY

**Operator Address:** 6733 S. Yale Ave.

**Zip:** 74121

**Operator PO Box:** PO Box 21468

**Operator City:** Tulsa

**State:** OK

**Operator Phone:** (918)491-0000

**Operator Internet Address:**

### Section 2 - Well Information

**Well in Master Development Plan?** NO

**Master Development Plan name:**

**Well in Master SUPO?** NO

**Master SUPO name:**

**Well in Master Drilling Plan?** NO

**Master Drilling Plan name:**

**Well Name:** BELL LAKE UNIT NORTH

**Well Number:** 407H

**Well API Number:**

**Field/Pool or Exploratory?** Field and Pool

**Field Name:** OJO CHISO

**Pool Name:** WOLFCAMP,  
SOUTHWEST

**Is the proposed well in an area containing other mineral resources?** NATURAL GAS,OIL

**Operator Name:** KAISER FRANCIS OIL COMPANY**Well Name:** BELL LAKE UNIT NORTH**Well Number:** 407H**Is the proposed well in an area containing other mineral resources?** NATURAL GAS,OIL**Is the proposed well in a Helium production area?** N**Use Existing Well Pad?** N**New surface disturbance?****Type of Well Pad:** MULTIPLE WELL**Multiple Well Pad Name:****Number:** 6**Well Class:** HORIZONTAL**NORTH BELL LAKE UNIT****Number of Legs:** 1**Well Work Type:** Drill**Well Type:** OIL WELL**Describe Well Type:****Well sub-Type:** EXPLORATORY (WILDCAT)**Describe sub-type:****Distance to town:** 20 Miles**Distance to nearest well:** 30 FT**Distance to lease line:** 635 FT**Reservoir well spacing assigned acres Measurement:** 480 Acres**Well plat:** BLUN\_407H\_C102\_20200129112112.pdf

BLUN\_407H\_Pymt\_20200129123034.pdf

**Well work start Date:** 07/01/2020**Duration:** 40 DAYS**Section 3 - Well Location Table****Survey Type:** RECTANGULAR**Describe Survey Type:****Datum:** NAD83**Vertical Datum:** NAVD88**Survey number:** 7640**Reference Datum:** GROUND LEVEL

Wellbore	NS-Foot	NS Indicator	EW-Foot	EW Indicator	Twsp	Range	Section	Aliquot/Lot/Tract	Latitude	Longitude	County	State	Meridian	Lease Type	Lease Number	Elevation	MD	TVD	Will this well produce from this lease?
SHL Leg #1	200 5	FNL	107 3	FW L	23S	34E	6	Lot 5	32.33516 67	- 103.5140 298	LEA	NEW MEXI CO	NEW MEXI CO	F	NMNM 000124 4A	348 1	0	0	N
KOP Leg #1	203 0	FNL	415	FW L	23S	34E	6	Lot 5	32.33510 9	- 103.5161 62	LEA	NEW MEXI CO	NEW MEXI CO	F	NMNM 000124 4A	- 764 6	111 65	111 27	N

Operator Name: KAISER FRANCIS OIL COMPANY

Well Name: BELL LAKE UNIT NORTH

Well Number: 407H

Wellbore	NS-Foot	NS Indicator	EW-Foot	EW Indicator	Twp	Range	Section	Aliquot/Lot/Tract	Latitude	Longitude	County	State	Meridian	Lease Type	Lease Number	Elevation	MD	TVD	Will this well produce from this lease?
PPP Leg #1-1	264 0	FSL	350	FW L	23S	34E	7	Lot 3	32.31926 3	- 103.5163 13	LEA	NEW MEXI CO	NEW MEXI CO	S	STATE	- 821 9	173 05	117 00	Y
PPP Leg #1-2	0	FNL	350	FW L	23S	34E	7	Lot 1	32.32638 2	- 103.5162 45	LEA	NEW MEXI CO	NEW MEXI CO	F	NMLC0 065194	- 821 9	146 65	117 00	Y
PPP Leg #1-3	260 0	FSL	410	FW L	23S	34E	6	Lot 6	32.33353 4	- 103.5161 77	LEA	NEW MEXI CO	NEW MEXI CO	F	NMNM 000058 7	- 821 9	120 65	117 00	Y
PPP Leg #1-4	264 0	FSL	417	FW L	23S	34E	6	Lot 6	32.33364 4	- 103.5161 76	LEA	NEW MEXI CO	NEW MEXI CO	F	NMNM 000058 7	- 821 6	120 25	116 97	Y
EXIT Leg #1	100	FSL	350	FW L	23S	34E	7	Lot 4	32.31215 4	- 103.5163 8	LEA	NEW MEXI CO	NEW MEXI CO	S	STATE	- 821 9	198 00	117 00	Y
BHL Leg #1	100	FSL	350	FW L	23S	34E	7	Lot 4	32.31215 4	- 103.5163 8	LEA	NEW MEXI CO	NEW MEXI CO	S	STATE	- 821 9	198 00	117 00	Y

## Melanie Wilson

---

**From:** notification@pay.gov  
**Sent:** Wednesday, January 29, 2020 12:29 PM  
**To:** mjp1692@gmail.com  
**Subject:** Pay.gov Payment Confirmation: BLM Oil and Gas Online Payment



An official email of the United States government



---

Your payment has been submitted to Pay.gov and the details are below. If you have any questions regarding this payment, please contact BLM OC CBS Customer Service at (303) 236-6795 or [BLM\\_OC\\_CBS\\_Customer\\_Service@blm.gov](mailto:BLM_OC_CBS_Customer_Service@blm.gov).

Application Name: BLM Oil and Gas Online Payment  
Pay.gov Tracking ID: 26N6EOHP  
Agency Tracking ID: 75940505815  
Transaction Type: Sale  
Transaction Date: 01/29/2020 02:28:55 PM EST  
Account Holder Name: GEORGE B KAISER  
Transaction Amount: \$10,230.00  
Card Type: Visa  
Card Number: \*\*\*\*\*0061

Company: Kaiser-Francis Oil Company  
APD IDs: 10400053835  
Lease Numbers: NMNM0000587  
Well Numbers: 407H  
Note: You will need your Pay.gov Tracking ID to complete your APD transaction in AFMSS II.  
Please ensure you write this number down upon completion of payment.

THIS IS AN AUTOMATED MESSAGE. PLEASE DO NOT REPLY.



Pay.gov is a program of the U.S. Department of the Treasury, Bureau of the Fiscal Service





U.S. Department of the Interior  
BUREAU OF LAND MANAGEMENT

## Drilling Plan Data Report

01/22/2021

APD ID: 10400053835

Submission Date: 02/03/2020

Highlighted data  
reflects the most  
recent changes

Operator Name: KAISER FRANCIS OIL COMPANY

Well Name: BELL LAKE UNIT NORTH

Well Number: 407H

[Show Final Text](#)

Well Type: OIL WELL

Well Work Type: Drill

### Section 1 - Geologic Formations

Formation ID	Formation Name	Elevation	True Vertical Depth	Measured Depth	Lithologies	Mineral Resources	Producing Formation
648770	---	3480	0	0	OTHER : Surface	NONE	N
648771	RUSTLER	2280	1200	1200	SANDSTONE	NONE	N
648772	SALADO	2005	1475	1475	SALT	NONE	N
648773	TOP SALT	1680	1800	1800	SALT	NONE	N
648774	BASE OF SALT	-1270	4750	4750	SALT	NONE	N
648775	LAMAR	-1570	5050	5050	SANDSTONE	NATURAL GAS, OIL	N
648776	BELL CANYON	-1870	5350	5350	SANDSTONE	NATURAL GAS, OIL	N
648777	CHERRY CANYON	-3070	6550	6550	SANDSTONE	NATURAL GAS, OIL	N
648778	BRUSHY CANYON	-4720	8200	8200	SANDSTONE	NATURAL GAS, OIL	N
648779	BONE SPRING	-4945	8425	8425	LIMESTONE	NATURAL GAS, OIL	N
648780	AVALON SAND	-5260	8740	8740	SANDSTONE	NATURAL GAS, OIL	N
648781	BONE SPRING 1ST	-6195	9675	9675	SANDSTONE	NATURAL GAS, OIL	N
648788	BONE SPRING 2ND	-6720	10200	10200	SANDSTONE	NATURAL GAS, OIL	N
652391	BONE SPRING LIME	-7220	10700	10700	LIMESTONE	NATURAL GAS, OIL	N
652392	BONE SPRING 3RD	-7720	11200	11200	SANDSTONE	NATURAL GAS, OIL	N
652393	WOLFCAMP	-8020	11500	11500	SANDSTONE	NATURAL GAS, OIL	Y

### Section 2 - Blowout Prevention

**Operator Name:** KAISER FRANCIS OIL COMPANY**Well Name:** BELL LAKE UNIT NORTH**Well Number:** 407H**Pressure Rating (PSI):** 5M**Rating Depth:** 13000

**Equipment:** A 5M system will be installed according to Onshore Order #2 consisting of an Annular Preventer, BOP with two rams, a blind ram and safety valves and appropriate handles located on the rig floor. BOP will be equipped with 2 side outlets (choke side shall be a minimum 3 line, and kill side will be a minimum 2 line). Kill line will be installed with (2) valves and a check valve (2 min) of proper pressure rating for the system. Remote kill line (2 min) will be installed and ran to the outer edge of the substructure and be unobstructed. A manual and hydraulic valve (3 min) will be installed on the choke line, 3 chokes will be used with one being remotely controlled. Fill up line will be installed above the uppermost preventer. Pressure gauge of proper pressure rating will be installed on choke manifold. Upper and lower kelly cocks will be utilized with handles readily available in plain sight. A float sub will be available at all times. All connections subject to well pressure will be flanged, welded, or clamped.

**Requesting Variance?** YES**Variance request:** Flex Hose Variance MultiBowl Wellhead 5M Annular Variance

**Testing Procedure:** BOP/BOPE will be tested by an independent service company to 250 psi low and the high pressure indicated above per Onshore Order 2 requirements. The System may be upgraded to a higher pressure but still tested to the working pressure listed in the table above. If the system is upgraded all of the components installed will be functional and tested.

**Choke Diagram Attachment:**

BLUN\_407H\_Choke\_Manifold\_20200203103704.pdf

**BOP Diagram Attachment:**

BLUN\_407H\_Flex\_Hose\_20200129110333.pdf

BLUN\_407H\_Annular\_BOP\_Variance\_Rqst\_20200129110334.pdf

BLUN\_407H\_Wellhead\_20200129110334.pdf

BLUN\_Well\_Control\_Plan\_20200129165724.pdf

BLUN\_407H\_BOP\_20200203135502.pdf

### Section 3 - Casing

Casing ID	String Type	Hole Size	Csg Size	Condition	Standard	Tapered String	Top Set MD	Bottom Set MD	Top Set TVD	Bottom Set TVD	Top Set MSL	Bottom Set MSL	Calculated casing length MD	Grade	Weight	Joint Type	Collapse SF	Burst SF	Joint SF Type	Joint SF	Body SF Type	Body SF
1	SURFACE	14.75	10.75	NEW	API	N	0	1250	0	1250	3481	2231	1250	J-55	40.5	ST&C	2.7	5.4	DRY	8.3	DRY	12.4
2	INTERMEDIATE	9.875	7.625	NEW	API	N	0	11065	0	11027		-7546	11065	HCP-110	29.7	LT&C	1.3	1.8	DRY	2.3	DRY	2.9
3	PRODUCTION	6.75	5.5	NEW	API	N	0	19800	0	11700		-8219	19800	P-110	20	OTHER - USS Eagle SFH	1.8	2	DRY	2.7	DRY	3.1

**Operator Name:** KAISER FRANCIS OIL COMPANY**Well Name:** BELL LAKE UNIT NORTH**Well Number:** 407H**Casing Attachments**

---

**Casing ID:** 1      **String Type:** SURFACE**Inspection Document:****Spec Document:****Tapered String Spec:****Casing Design Assumptions and Worksheet(s):**BLUN\_407H\_Csg\_Assumptions\_20200129111556.pdf

---

**Casing ID:** 2      **String Type:** INTERMEDIATE**Inspection Document:****Spec Document:****Tapered String Spec:****Casing Design Assumptions and Worksheet(s):**BLUN\_407H\_Csg\_Assumptions\_20200129110549.pdf

---

**Casing ID:** 3      **String Type:** PRODUCTION**Inspection Document:****Spec Document:****Tapered String Spec:****Casing Design Assumptions and Worksheet(s):**BLUN\_407H\_Prod\_Csg\_Specs\_20200129111531.pdf

---

**Section 4 - Cement**

**Operator Name:** KAISER FRANCIS OIL COMPANY**Well Name:** BELL LAKE UNIT NORTH**Well Number:** 407H

String Type	Lead/Tail	Stage Tool Depth	Top MD	Bottom MD	Quantity(sx)	Yield	Density	Cu Ft	Excess%	Cement type	Additives
SURFACE	Lead		0	1250	602	1.7	13.5	1041	50	ExtendaCem	Poly E Flake

INTERMEDIATE	Lead		0	1106 5	837	2.7	11	2286	25	NeoCem	Extender
INTERMEDIATE	Tail		0	1106 5	571	1.2	15.6	684	25	Halcem	none
PRODUCTION	Lead		9000	1980 0	848	1.2	14.5	1037	15	Versacem	Halad

### Section 5 - Circulating Medium

**Mud System Type:** Closed**Will an air or gas system be Used?** NO**Description of the equipment for the circulating system in accordance with Onshore Order #2:****Diagram of the equipment for the circulating system in accordance with Onshore Order #2:**

**Describe what will be on location to control well or mitigate other conditions:** Sufficient mud materials to maintain mud properties and meet minimum lost circulation and weight increase requirements will be kept on location at all time.

**Describe the mud monitoring system utilized:** PVT/Pason/Visual Monitoring

### Circulating Medium Table

Top Depth	Bottom Depth	Mud Type	Min Weight (lbs/gal)	Max Weight (lbs/gal)	Density (lbs/cu ft)	Gel Strength (lbs/100 sqft)	PH	Viscosity (CP)	Salinity (ppm)	Filtration (cc)	Additional Characteristics
1102 7	1170 0	OIL-BASED MUD	10	12							
1250	1102 7	OTHER : Brine	8.7	9							
0	1250	OTHER : Fresh Water	8.4	9							

**Operator Name:** KAISER FRANCIS OIL COMPANY**Well Name:** BELL LAKE UNIT NORTH**Well Number:** 407H

### Section 6 - Test, Logging, Coring

**List of production tests including testing procedures, equipment and safety measures:**

Top of cement on production casing will be determined by calculation.

**List of open and cased hole logs run in the well:**

DIRECTIONAL SURVEY, GAMMA RAY LOG, MUD LOG/GEOLOGIC LITHOLOGY LOG, MUD LOG/GEOLOGICAL LITHOLOGY LOG,

**Coring operation description for the well:**

None planned

### Section 7 - Pressure

**Anticipated Bottom Hole Pressure:** 7300**Anticipated Surface Pressure:** 4725**Anticipated Bottom Hole Temperature(F):** 199**Anticipated abnormal pressures, temperatures, or potential geologic hazards?** NO**Describe:****Contingency Plans geohazards description:****Contingency Plans geohazards attachment:****Hydrogen Sulfide drilling operations plan required?** YES**Hydrogen sulfide drilling operations plan:**

BLUN\_H2S\_Plan\_20200114113955.pdf

### Section 8 - Other Information

**Proposed horizontal/directional/multi-lateral plan submission:**

BLUN\_407H\_Directional\_Plan\_20200129110628.pdf

**Other proposed operations facets description:**

Gas Capture Plan attached

**Other proposed operations facets attachment:**

BLUN\_Pad\_6\_GCP\_20200122132813.pdf

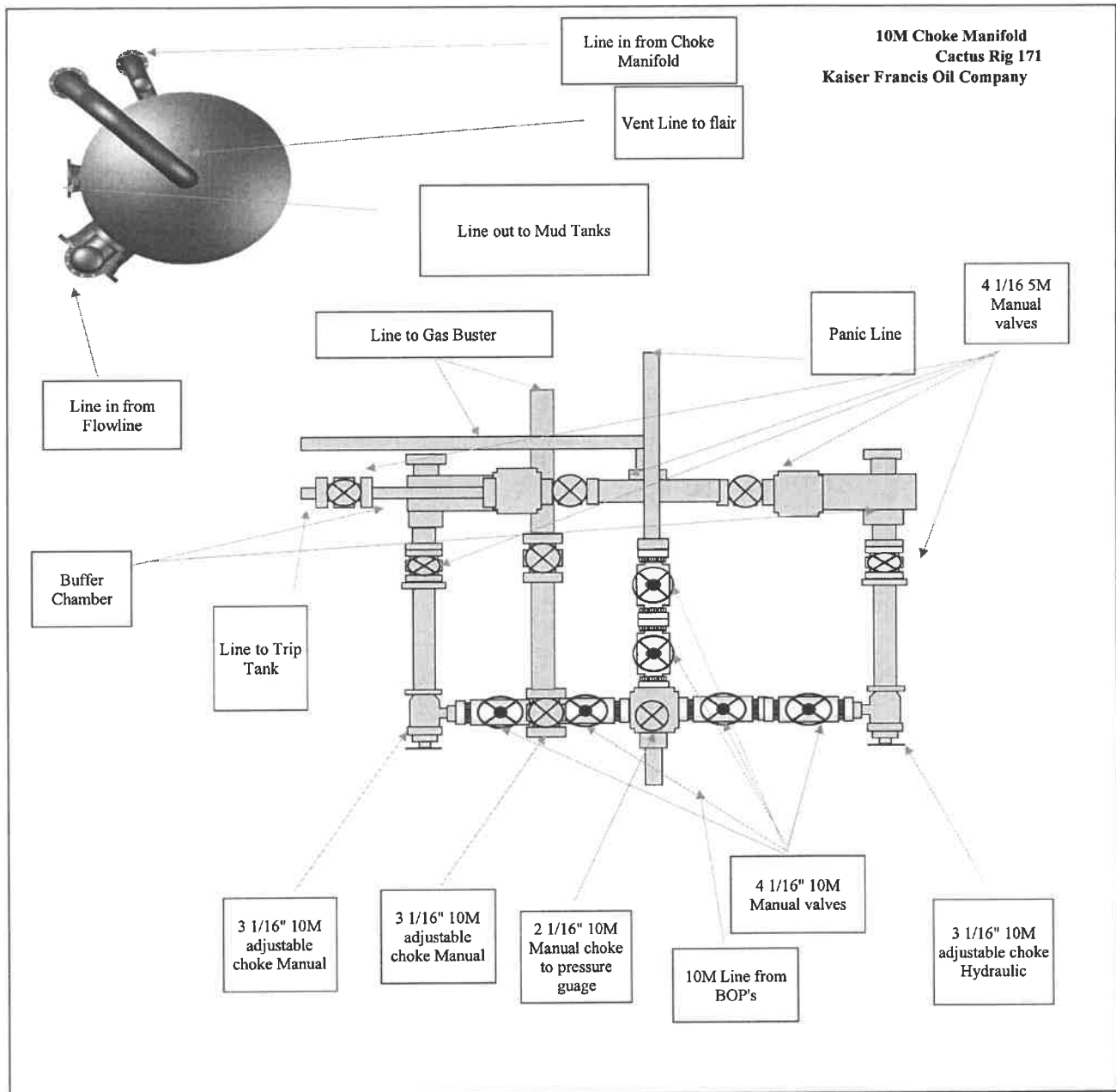
**Other Variance attachment:**

BLUN\_407H\_Annular\_BOP\_Variance\_Rqst\_20200129110652.pdf

BLUN\_407H\_Wellhead\_20200129110652.pdf

BLUN\_407H\_Flex\_Hose\_20200129110652.pdf





**KAISER-FRANCIS OIL COMPANY  
HYDROGEN SULFIDE (H<sub>2</sub>S) CONTINGENCY PLAN  
FOR DRILLING/COMPLETION WORKOVER/FACILITY**

**Bell Lake Unit North  
SECTION 1 -T23S-R33E  
SECTION 6 -T23S-R34E  
SECTION 5 -T23S-R34E**

**LEA COUNTY, NM**

This well/facility is not expected to have H<sub>2</sub>S, but due to the sensitive location, the following is submitted as requested.

TABLE OF CONTENTS

Emergency Response Activation and General Responsibilities 3

Individual Responsibilities During An H<sub>2</sub>S Release 4

Procedure For Igniting An Uncontrollable Condition 5

Emergency Phone Numbers 6

Protection Of The General Public/Roe 7

Characteristics Of H<sub>2</sub>S And SO<sub>2</sub> 8

Training 8

Public Relations 8

Maps

**EMERGENCY RESPONSE ACTIVATION AND GENERAL RESPONSIBILITIES****Activation of the Emergency Action Plan**

In the event of any emergency situation, all personnel on location should first ensure that the following items are initiated. After that, they should refer to the appropriate Specific Emergency Guidance sections below for further responsibilities:

1. Notify the senior ranking contract representative on site.
2. Notify Kaiser-Francis representative in charge.
3. Notify civil authorities if the Kaiser-Francis Representative cannot be contacted and the situation dictates.
4. Perform rescue and first aid as required (without jeopardizing additional personnel).

**General Responsibilities**

In the event of an H<sub>2</sub>S emergency, the following plan will be initiated.

- 1) All personnel will immediately evacuate to an up-wind and if possible up-hill "safe area".
- 2) If for any reason a person must enter the hazardous area, they must wear a SCBA (Self contained breathing apparatus).
- 3) Always use the "buddy system".
- 4) Isolate the well/problem if possible.
- 5) Account for all personnel
- 6) Display the proper colors, warning all unsuspecting personnel of the danger at hand
- 7) Contact the Company personnel as soon as possible if not at the location. (use the enclosed call list as instructed)

At this point the company representative will evaluate the situation and coordinate the necessary duties to bring the situation under control, and if necessary, the notification of emergency response agencies and residents.

**INDIVIDUAL RESPONSIBILITIES DURING AN H<sub>2</sub>S RELEASE**

The following procedures and responsibilities will be implemented on activation of the H<sub>2</sub>S siren and lights.

**All Personnel:**

1. On alarm, don escape unit (if available) and report to upwind briefing area.

**Rig Manager/Tool Pusher:**

1. Check that all personnel are accounted for and their condition.
2. Administer or arrange for first aid treatment, and/or call EMTs as needed.
3. Identify two people best suited to secure well and perform rescue, and instruct them to don SCBA.
4. Notify Contract management and Kaiser-Francis Representative.
5. Remain at the briefing area, assess and monitor personnel and overall situation for hazards or conditions that might warrant a change in the action plan.

**Two People Responsible for Shut-in and Rescue:**

1. Don SCBA and acquire tools to secure well and perform rescue, i.e., wrenches, retrieval ropes, etc.
2. Utilize the buddy system to secure well and perform rescue(s).
3. Return to the briefing area and stand by for further instructions.

**All Other Personnel:**

1. Isolate the area and prevent entry by other persons into the 100 ppm ROE. Additionally the first responder(s) must evacuate any public places encompassed by the 100 ppm ROE. First responder(s) must take care not to injure themselves during this operation. Company and/or local officials must be contacted to aid in this operation. Evacuation of the public should be beyond the 100 ppm ROE.

**Kaiser-Francis Oil Company Representative:**

1. Remain at the briefing area, assess and monitor personnel and overall situation for hazards or conditions that might warrant a change in the action plan.
2. Notify company management or Local Incident Commander, and Police, Fire Department, or other local emergency services as required.



**PROCEDURE FOR IGNITING AN UNCONTROLLABLE CONDITION:**

Should control of the well be considered lost and ignition considered, take care to protect against exposure to Sulfur Dioxide (SO<sub>2</sub>). Intentional ignition must be coordinated with the NMOCD and local officials. Additionally the NM State Police shall be the Incident Command of any major release.

The decision to ignite a well should be a last resort and one if not both of the following pertain.

- 1) Human life and/or property are in danger.
- 2) There is no hope of bringing the situation under control with the prevailing conditions at the site.

**INSTRUCTIONS FOR IGNITION:**

- 1) Two people are required. They must be equipped with positive pressure; self contained breathing apparatus and a "D"-ring style, full body, OSHA approved safety harness. Non-flammable rope will be attached.
- 2) One of the people will be a qualified safety person who will test the atmosphere for H<sub>2</sub>S, Oxygen, & LFL. The other person will be the company supervisor; he is responsible for igniting the well.
- 3) Ignite up-wind from a distance no closer than necessary. Make sure that where you ignite from has the maximum escape avenue available. A 25mm flare gun shall be used, with a +/-500' range to ignite the gas.
- 4) Prior to ignition, make a final check for combustible gases.
- 5) Following ignition, continue with the emergency actions & procedures as before.

**CONTACTING AUTHORITIES**

Kaiser-Francis personnel must liaison with local and state agencies to ensure a proper response to a major release. Additionally, the OCD must be notified of the release as soon as possible but no later than 4 hours. Agencies will ask for information such as type and volume of release, wind direction, location of release, etc. Be prepared with all information available. The following call list of essential and potential responders has been prepared for use during a release. This response plan must be in coordination with the State of New Mexico's 'Hazardous Materials Emergency Response Plan' (HMER).

EMERGENCY CALL LIST: (Start and continue until ONE of these people have been reached)

	<u>OFFICE</u>	<u>MOBILE</u>
Kaiser-Francis Oil Co.	918/494-0000	
Bill Wilkinson	580/668-2335	580/221-4637
David Zerger	918/491-4350	918/557-6708
Charles Lock	918/491-4337	918/671-6510
Stuart Blake	918/491-4347	918/510-4126
Robert Sanford	918/491-4201	918/770-2682
Eric Hansen	918/491-4339	918/527-5260

EMERGENCY RESPONSE NUMBERS: Lea County, New Mexico

State Police – Artesia	575/748-9718
State Police – Hobbs	575/392-5580
State Police – Carlsbad	575/885-3138
Lea County Sheriff - Lovington	575/396-3611
Local Emergency Planning Center – Lea County	575/396-8607
Local Emergency Planning Center – Eddy County	575/885-3581
Fire Fighting, Rescue & Ambulance – Carlsbad	911 or 575/885-3125
Fire Fighting, Rescue & Ambulance – Hobbs	911 or 575/397-9308
Fire Fighting – Jal Volunteer Fire Department	911 or 505/395-2221
New Mexico Oil & Gas Commission – Artesia	575/748-1283
New Mexico Oil & Gas Commission – Hobbs	575/393-6161
Air Medical Transport Services – Hobbs	800/550-1025
Med Flight Air Ambulance – Albuquerque	505/842-4433
Angel MedFlight	844/553-9033
DXP	432/580-3770
BJ Services	575/392-5556
Halliburton	575/392-6531 800/844-8451

**PROTECTION OF THE GENERAL PUBLIC/ROE:**

In the event of a release with a concentration greater than 100 ppm H<sub>2</sub>S, the ROE (Radius of Exposure) calculations will be done to determine if the following conditions have been met:

- Does the 100 ppm ROE include any public area (any place not associated with this site)
- Does the 500 ppm ROE include any public road (any road which the general public may travel)
- Is the 100 ppm ROE equal to or greater than 3000 feet

If any one of these conditions have been met then the Contingency Plan will be implemented. The following shows how to calculate the radius of exposure and an example.

**Calculation for the 100 ppm ROE:**

$$X = [(1.589)(\text{concentration})(Q)] (0.6258)$$

(H<sub>2</sub>S concentrations in decimal form)

10,000 ppm +=1.+  
1,000 ppm +=.1+  
100 ppm +=.01+  
10 ppm +=.001+

**Calculation for the 500 ppm ROE:**

$$X + [(0.4546)(\text{concentration})(Q)] (0.6258)$$

EXAMPLE: If a well/facility has been determined to have 150 ppm H<sub>2</sub>S in the gas mixture and the well/facility is producing at a gas rate of 200 MCFPD then:

ROE for 100 PPM  $X = [(1.589)(.0150)(200)] (0.6258)$   
 $X = 2.65'$

ROE for 500 PPM  $X = [(0.4546)(.0150)(200)] (0.6258)$   
 $X = 1.2'$

(These calculations will be forwarded to the appropriate District NMOCD office when applicable.)

**PUBLIC EVACUATION PLAN:**

(When the supervisor has determined that the General Public will be involved, the following plan will be implemented)

- 1) Notification of the emergency response agencies of the hazardous condition and Implement evacuation procedures.
- 2) A trained person in H<sub>2</sub>S safety, shall monitor with detection equipment the H<sub>2</sub>S Concentration, wind and area of exposure (ROE). This person will determine the outer perimeter of the hazardous area. The extent of the evacuation area will be determined from the data being collected. Monitoring shall continue until the situation has been resolved. **(All monitoring equipment will be UL approved, for use in class I groups A,B,C & D, Division I, hazardous locations. All monitors will have a minimum capability of measuring H<sub>2</sub>S, oxygen, and flammable values.)**
- 3) Law enforcement shall be notified to set up necessary barriers and maintain such for the duration of the situation as well as aid in the evacuation procedure.
- 4) The company supervising personnel shall stay in communication with all agencies through out the duration of the situation and inform such agencies when the situation has been contained and the effected area(s) is safe to enter.

**CHARACTERISTICS OF H<sub>2</sub>S AND SO<sub>2</sub>**

Common Name	Chemical Formula	Specific Gravity	Threshold Limit	Hazardous Limit	Lethal Concentration
Hydrogen Sulfide	H <sub>2</sub> S	1.189 Air = 1	10 ppm	100 ppm	600 ppm
Sulfur Dioxide	SO <sub>2</sub>	2.21 Air = 1	2 ppm	N/A	1000 ppm

**TRAINING:**

All responders must have training in the detection of H<sub>2</sub>S measures for protection against the gas, equipment used for protection and emergency response. Weekly drills by all crews will be conducted and recorded in the IADC daily log. Additionally, responders must be equipped with H<sub>2</sub>S monitors at all times.

**PUBLIC RELATIONS**

Kaiser-Francis recognizes that the news media have a legitimate interest in incidents at Kaiser-Francis facilities that could affect the public. It is to the company's benefit to cooperate with the news media when incidents occur because these media are our best liaison with the public.

Our objective is to see that all reports of any emergency are factual and represent the company's position fairly and accurately. Cooperation with news media representatives is the most reliable guarantee that this objective will be met.

All contract and Kaiser-Francis employees are instructed **NOT** to make any statement to the media concerning the emergency incident. If a media representative contacts any employee, they should refer them to the designated Emergency Command Center where they should contact the Incident Commander or his designated relief for any information concerning the incident.

Kaiser-Francis Oil Company

Project: Permian NM E'83  
 County: Lea  
 Site: BLUN Pad 6  
 Well: Bell Lake Unit North 407H  
 Wellbore: #407H OH  
 Design: Plan #1



## CASING DETAILS

TVD	MD	Name
1250.00	1250.00	10 3/4"
11027.00	11065.86	7 5/8"



Azimuths to Grid North  
 True North: -0.44°  
 Magnetic North: 6.16°

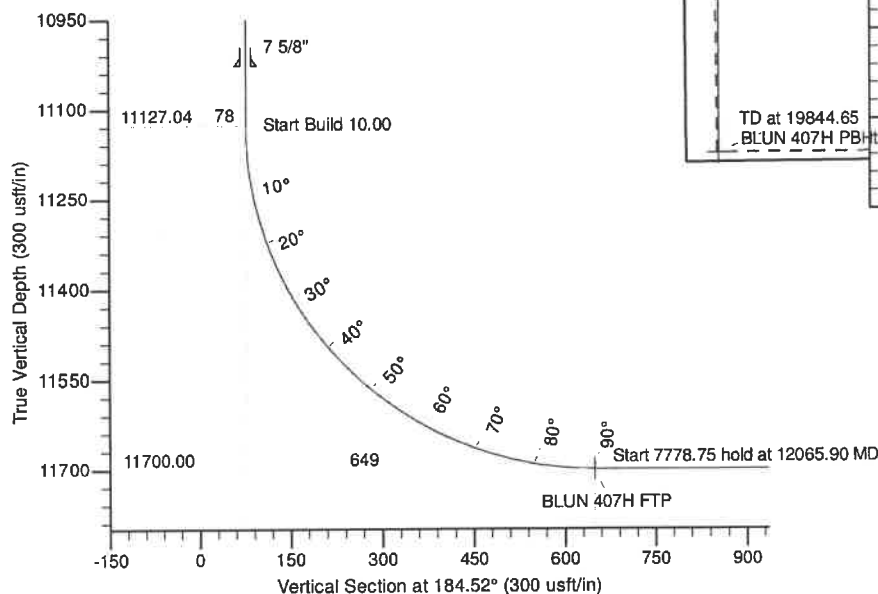
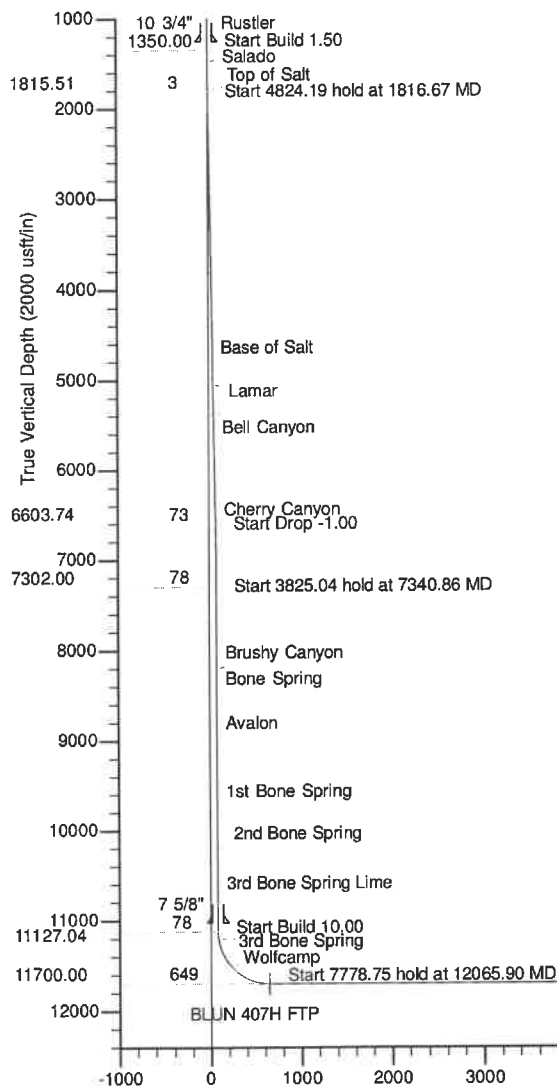
Magnetic Field  
 Strength: 47626.0nT  
 Dip Angle: 60.03°  
 Date: 11/14/2020  
 Model: IGRF2020

US State Plane 1983  
 New Mexico Eastern Zone  
 32° 20' 6.600 N  
 103° 30' 50.507 W

## FORMATION DETAILS

TVDPath	MDPath	Formation
1200.00	1200.00	Rustler
1475.00	1475.02	Salado
1800.00	1801.05	Top of Salt
4750.00	4773.20	Base of Salt
5050.00	5075.45	Lamar
5350.00	5377.70	Bell Canyon
6550.00	6586.72	Cherry Canyon
8200.00	8238.86	Brushy Canyon
8425.00	8463.86	Bone Spring
8740.00	8778.86	Avalon
9675.00	9713.86	1st Bone Spring
10200.00	10238.86	2nd Bone Spring
10700.00	10738.86	3rd Bone Spring Lime
11200.00	11239.06	3rd Bone Spring
11500.00	11572.02	Wolfcamp

OFFSETS  
 330' FWL  
 100' FSL



## Vertical Section at 184.52° (2000 usft/in)

## DESIGN TARGET DETAILS

Name	TVD	+N/-S	+E/-W	Northing	Easting	Latitude	Longitude
BLUN 407H SL	0.00	0.00	0.00	486633.45	794387.31	32° 20' 6.600 N	103° 30' 50.507 W
BLUN 407H FTP	11700.00	-598.87	-658.83	486034.59	793728.49	32° 20' 0.724 N	103° 30' 58.239 W
BLUN 407H PBHL	11700.00	-8377.61	-662.10	478255.99	793725.22	32° 18' 43.756 N	103° 30' 58.968 W

## SECTION DETAILS

Sec	MD	Inc	Azi	TVD	+N/-S	+E/-W	Dleg	TFace	VSec	Target
1	0.00	0.00	0.00	0.00	0.00	0.00	0.00	0.00	0.00	
2	1350.00	0.00	0.00	1350.00	0.00	0.00	0.00	0.00	0.00	
3	1816.67	7.00	267.75	1815.51	-1.12	-28.45	1.50	267.75	3.36	
4	6640.86	7.00	267.75	6603.74	-24.22	-615.92	0.00	0.00	72.67	
5	7340.86	0.00	0.00	7302.00	-25.90	-658.59	1.00	180.00	77.71	
6	11165.90	0.00	0.00	11127.04	-25.90	-658.59	0.00	0.00	77.71	
7	12065.90	90.00	180.02	11700.00	-598.86	-658.83	10.00	180.02	648.91	
8	19844.65	90.00	180.02	11700.00	-8377.61	-662.10	0.00	0.00	8403.73	BLUN 407H PBHL

S6-T23S-R34E SL  
 2005'FNL 1073.3'FWL  
 S6-T23S-R34E FTP  
 2600'FSL 410'FWL  
 S7-T23S-R34E PBHL  
 100'FSL 350'FWL



## Titan Directional Drilling

## Survey Report

<b>Company:</b>	Kaiser-Francis Oil Company	<b>Local Co-ordinate Reference:</b>	Well Bell Lake Unit North 407H - Slot F
<b>Project:</b>	Permian NM E'83	<b>TVD Reference:</b>	est.GL+KB @ 3507.00usft (planning)
<b>Site:</b>	BLUN Pad 6	<b>MD Reference:</b>	est.GL+KB @ 3507.00usft (planning)
<b>Well:</b>	Bell Lake Unit North 407H	<b>North Reference:</b>	Grid
<b>Wellbore:</b>	#407H OH	<b>Survey Calculation Method:</b>	Minimum Curvature
<b>Design:</b>	Plan #1	<b>Database:</b>	EDM 5k-14

<b>Project</b>	Permian NM E'83		
<b>Map System:</b>	US State Plane 1983	<b>System Datum:</b>	Mean Sea Level
<b>Geo Datum:</b>	North American Datum 1983		
<b>Map Zone:</b>	New Mexico Eastern Zone		Using geodetic scale factor

<b>Site</b>	BLUN Pad 6, Centered on #207H		
<b>Site Position:</b>		<b>Northing:</b>	486,583.25 usft
<b>From:</b>	Map	<b>Easting:</b>	794,420.27 usft
<b>Position Uncertainty:</b>	0.00 usft	<b>Slot Radius:</b>	13-3/16 "
		<b>Latitude:</b>	32° 20' 6.101 N
		<b>Longitude:</b>	103° 30' 50.128 W
		<b>Grid Convergence:</b>	0.44 °

<b>Well</b>	Bell Lake Unit North 407H - Slot F		
<b>Well Position</b>	<b>+N/-S</b>	0.00 usft	<b>Northing:</b> 486,633.45 usft
	<b>+E/-W</b>	0.00 usft	<b>Easting:</b> 794,387.31 usft
<b>Position Uncertainty</b>	0.00 usft	<b>Wellhead Elevation:</b>	usft
		<b>Latitude:</b>	32° 20' 6.600 N
		<b>Longitude:</b>	103° 30' 50.507 W
		<b>Ground Level:</b>	3,481.60 usft

<b>Wellbore</b>	#407H OH		
<b>Magnetics</b>	<b>Model Name</b>	<b>Sample Date</b>	<b>Declination</b>
			(°)
	IGRF2020	11/14/20	6.60
			Dip Angle (°)
			60.03
			Field Strength (nT)
			47,626.00213345

<b>Design</b>	Plan #1		
<b>Audit Notes:</b>			
<b>Version:</b>	<b>Phase:</b>	PROTOTYPE	<b>Tie On Depth:</b> 0.00
<b>Vertical Section:</b>	<b>Depth From (TVD)</b>	<b>+N/-S</b>	<b>+E/-W</b>
	(usft)	(usft)	(usft)
	0.00	0.00	0.00
			<b>Direction</b>
			(°)
			184.52

<b>Planned Survey</b>									
<b>Measured Depth</b>	<b>Inclination</b>	<b>Azimuth</b>	<b>Vertical Depth</b>	<b>+N/-S</b>	<b>+E/-W</b>	<b>Vertical Section</b>	<b>Dogleg Rate</b>	<b>Build Rate</b>	<b>Turn Rate</b>
(usft)	(°)	(°)	(usft)	(usft)	(usft)	(usft)	(°/100usft)	(°/100usft)	(°/100usft)
0.00	0.00	0.00	0.00	0.00	0.00	0.00	0.00	0.00	0.00
1,200.00	0.00	0.00	1,200.00	0.00	0.00	0.00	0.00	0.00	0.00
<b>Rustler</b>									
1,250.00	0.00	0.00	1,250.00	0.00	0.00	0.00	0.00	0.00	0.00
<b>10 3/4"</b>									
1,350.00	0.00	0.00	1,350.00	0.00	0.00	0.00	0.00	0.00	0.00
1,400.00	0.75	267.75	1,400.00	-0.01	-0.33	0.04	1.50	1.50	0.00
1,475.02	1.88	267.75	1,475.00	-0.08	-2.04	0.24	1.50	1.50	0.00
<b>Salado</b>									
1,500.00	2.25	267.75	1,499.96	-0.12	-2.94	0.35	1.50	1.50	0.00
1,600.00	3.75	267.75	1,599.82	-0.32	-8.17	0.96	1.50	1.50	0.00
1,700.00	5.25	267.75	1,699.51	-0.63	-16.01	1.89	1.50	1.50	0.00
1,800.00	6.75	267.75	1,798.96	-1.04	-26.46	3.12	1.50	1.50	0.00
1,801.05	6.77	267.75	1,800.00	-1.05	-26.58	3.14	1.50	1.50	0.00
<b>Top of Salt</b>									
1,816.67	7.00	267.75	1,815.51	-1.12	-28.45	3.36	1.50	1.50	0.00

## Titan Directional Drilling

## Survey Report

<b>Company:</b>	Kaiser-Francis Oil Company	<b>Local Co-ordinate Reference:</b>	Well Bell Lake Unit North 407H - Slot F
<b>Project:</b>	Permian NM E'83	<b>TVD Reference:</b>	est.GL+KB @ 3507.00usft (planning)
<b>Site:</b>	BLUN Pad 6	<b>MD Reference:</b>	est.GL+KB @ 3507.00usft (planning)
<b>Well:</b>	Bell Lake Unit North 407H	<b>North Reference:</b>	Grid
<b>Wellbore:</b>	#407H OH	<b>Survey Calculation Method:</b>	Minimum Curvature
<b>Design:</b>	Plan #1	<b>Database:</b>	EDM 5k-14

## Planned Survey

Measured Depth (usft)	Inclination (°)	Azimuth (°)	Vertical Depth (usft)	+N/-S (usft)	+E/-W (usft)	Vertical Section (usft)	Dogleg Rate (°/100usft)	Build Rate (°/100usft)	Turn Rate (°/100usft)
1,900.00	7.00	267.75	1,898.22	-1.52	-38.60	4.55	0.00	0.00	0.00
2,000.00	7.00	267.75	1,997.47	-2.00	-50.78	5.99	0.00	0.00	0.00
2,100.00	7.00	267.75	2,096.73	-2.48	-62.95	7.43	0.00	0.00	0.00
2,200.00	7.00	267.75	2,195.98	-2.95	-75.13	8.86	0.00	0.00	0.00
2,300.00	7.00	267.75	2,295.24	-3.43	-87.31	10.30	0.00	0.00	0.00
2,400.00	7.00	267.75	2,394.49	-3.91	-99.49	11.74	0.00	0.00	0.00
2,500.00	7.00	267.75	2,493.75	-4.39	-111.66	13.18	0.00	0.00	0.00
2,600.00	7.00	267.75	2,593.00	-4.87	-123.84	14.61	0.00	0.00	0.00
2,700.00	7.00	267.75	2,692.26	-5.35	-136.02	16.05	0.00	0.00	0.00
2,800.00	7.00	267.75	2,791.51	-5.83	-148.20	17.49	0.00	0.00	0.00
2,900.00	7.00	267.75	2,890.77	-6.31	-160.37	18.92	0.00	0.00	0.00
3,000.00	7.00	267.75	2,990.02	-6.79	-172.55	20.36	0.00	0.00	0.00
3,100.00	7.00	267.75	3,089.27	-7.27	-184.73	21.80	0.00	0.00	0.00
3,200.00	7.00	267.75	3,188.53	-7.74	-196.91	23.23	0.00	0.00	0.00
3,300.00	7.00	267.75	3,287.78	-8.22	-209.08	24.67	0.00	0.00	0.00
3,400.00	7.00	267.75	3,387.04	-8.70	-221.26	26.11	0.00	0.00	0.00
3,500.00	7.00	267.75	3,486.29	-9.18	-233.44	27.54	0.00	0.00	0.00
3,600.00	7.00	267.75	3,585.55	-9.66	-245.62	28.98	0.00	0.00	0.00
3,700.00	7.00	267.75	3,684.80	-10.14	-257.79	30.42	0.00	0.00	0.00
3,800.00	7.00	267.75	3,784.06	-10.62	-269.97	31.86	0.00	0.00	0.00
3,900.00	7.00	267.75	3,883.31	-11.10	-282.15	33.29	0.00	0.00	0.00
4,000.00	7.00	267.75	3,982.57	-11.58	-294.33	34.73	0.00	0.00	0.00
4,100.00	7.00	267.75	4,081.82	-12.05	-306.50	36.17	0.00	0.00	0.00
4,200.00	7.00	267.75	4,181.08	-12.53	-318.68	37.60	0.00	0.00	0.00
4,300.00	7.00	267.75	4,280.33	-13.01	-330.86	39.04	0.00	0.00	0.00
4,400.00	7.00	267.75	4,379.58	-13.49	-343.04	40.48	0.00	0.00	0.00
4,500.00	7.00	267.75	4,478.84	-13.97	-355.21	41.91	0.00	0.00	0.00
4,600.00	7.00	267.75	4,578.09	-14.45	-367.39	43.35	0.00	0.00	0.00
4,700.00	7.00	267.75	4,677.35	-14.93	-379.57	44.79	0.00	0.00	0.00
4,773.20	7.00	267.75	4,750.00	-15.28	-388.48	45.84	0.00	0.00	0.00
<b>Base of Salt</b>									
4,800.00	7.00	267.75	4,776.60	-15.41	-391.75	46.22	0.00	0.00	0.00
4,900.00	7.00	267.75	4,875.86	-15.89	-403.92	47.66	0.00	0.00	0.00
5,000.00	7.00	267.75	4,975.11	-16.37	-416.10	49.10	0.00	0.00	0.00
5,075.45	7.00	267.75	5,050.00	-16.73	-425.29	50.18	0.00	0.00	0.00
<b>Lamar</b>									
5,100.00	7.00	267.75	5,074.37	-16.84	-428.28	50.53	0.00	0.00	0.00
5,200.00	7.00	267.75	5,173.62	-17.32	-440.46	51.97	0.00	0.00	0.00
5,300.00	7.00	267.75	5,272.88	-17.80	-452.63	53.41	0.00	0.00	0.00
5,377.70	7.00	267.75	5,350.00	-18.17	-462.10	54.52	0.00	0.00	0.00
<b>Bell Canyon</b>									
5,400.00	7.00	267.75	5,372.13	-18.28	-464.81	54.85	0.00	0.00	0.00
5,500.00	7.00	267.75	5,471.39	-18.76	-476.99	56.28	0.00	0.00	0.00
5,600.00	7.00	267.75	5,570.64	-19.24	-489.17	57.72	0.00	0.00	0.00

## Titan Directional Drilling

## Survey Report

<b>Company:</b>	Kaiser-Francis Oil Company	<b>Local Co-ordinate Reference:</b>	Well Bell Lake Unit North 407H - Slot F
<b>Project:</b>	Permian NM E'83	<b>TVD Reference:</b>	est.GL+KB @ 3507.00usft (planning)
<b>Site:</b>	BLUN Pad 6	<b>MD Reference:</b>	est.GL+KB @ 3507.00usft (planning)
<b>Well:</b>	Bell Lake Unit North 407H	<b>North Reference:</b>	Grid
<b>Wellbore:</b>	#407H OH	<b>Survey Calculation Method:</b>	Minimum Curvature
<b>Design:</b>	Plan #1	<b>Database:</b>	EDM 5k-14

## Planned Survey

Measured Depth (usft)	Inclination (°)	Azimuth (°)	Vertical Depth (usft)	+N/-S (usft)	+E/-W (usft)	Vertical Section (usft)	Dogleg Rate (°/100usft)	Build Rate (°/100usft)	Turn Rate (°/100usft)
5,700.00	7.00	267.75	5,669.89	-19.72	-501.34	59.16	0.00	0.00	0.00
5,800.00	7.00	267.75	5,769.15	-20.20	-513.52	60.59	0.00	0.00	0.00
5,900.00	7.00	267.75	5,868.40	-20.68	-525.70	62.03	0.00	0.00	0.00
6,000.00	7.00	267.75	5,967.66	-21.15	-537.88	63.47	0.00	0.00	0.00
6,100.00	7.00	267.75	6,066.91	-21.63	-550.05	64.90	0.00	0.00	0.00
6,200.00	7.00	267.75	6,166.17	-22.11	-562.23	66.34	0.00	0.00	0.00
6,300.00	7.00	267.75	6,265.42	-22.59	-574.41	67.78	0.00	0.00	0.00
6,400.00	7.00	267.75	6,364.68	-23.07	-586.59	69.21	0.00	0.00	0.00
6,500.00	7.00	267.75	6,463.93	-23.55	-598.76	70.65	0.00	0.00	0.00
6,586.72	7.00	267.75	6,550.00	-23.96	-609.32	71.90	0.00	0.00	0.00
<b>Cherry Canyon</b>									
6,600.00	7.00	267.75	6,563.19	-24.03	-610.94	72.09	0.00	0.00	0.00
6,640.86	7.00	267.75	6,603.74	-24.22	-615.92	72.67	0.00	0.00	0.00
6,700.00	6.41	267.75	6,662.48	-24.50	-622.82	73.49	1.00	-1.00	0.00
6,800.00	5.41	267.75	6,761.94	-24.90	-633.10	74.70	1.00	-1.00	0.00
6,900.00	4.41	267.75	6,861.58	-25.24	-641.65	75.71	1.00	-1.00	0.00
7,000.00	3.41	267.75	6,961.34	-25.50	-648.46	76.52	1.00	-1.00	0.00
7,100.00	2.41	267.75	7,061.21	-25.70	-653.53	77.11	1.00	-1.00	0.00
7,200.00	1.41	267.75	7,161.16	-25.83	-656.86	77.51	1.00	-1.00	0.00
7,300.00	0.41	267.75	7,261.14	-25.90	-658.45	77.69	1.00	-1.00	0.00
7,340.86	0.00	0.00	7,302.00	-25.90	-658.59	77.71	1.00	-1.00	0.00
7,400.00	0.00	0.00	7,361.14	-25.90	-658.59	77.71	0.00	0.00	0.00
7,500.00	0.00	0.00	7,461.14	-25.90	-658.59	77.71	0.00	0.00	0.00
7,600.00	0.00	0.00	7,561.14	-25.90	-658.59	77.71	0.00	0.00	0.00
7,700.00	0.00	0.00	7,661.14	-25.90	-658.59	77.71	0.00	0.00	0.00
7,800.00	0.00	0.00	7,761.14	-25.90	-658.59	77.71	0.00	0.00	0.00
7,900.00	0.00	0.00	7,861.14	-25.90	-658.59	77.71	0.00	0.00	0.00
8,000.00	0.00	0.00	7,961.14	-25.90	-658.59	77.71	0.00	0.00	0.00
8,100.00	0.00	0.00	8,061.14	-25.90	-658.59	77.71	0.00	0.00	0.00
8,200.00	0.00	0.00	8,161.14	-25.90	-658.59	77.71	0.00	0.00	0.00
8,238.86	0.00	0.00	8,200.00	-25.90	-658.59	77.71	0.00	0.00	0.00
<b>Brushy Canyon</b>									
8,300.00	0.00	0.00	8,261.14	-25.90	-658.59	77.71	0.00	0.00	0.00
8,400.00	0.00	0.00	8,361.14	-25.90	-658.59	77.71	0.00	0.00	0.00
8,463.86	0.00	0.00	8,425.00	-25.90	-658.59	77.71	0.00	0.00	0.00
<b>Bone Spring</b>									
8,500.00	0.00	0.00	8,461.14	-25.90	-658.59	77.71	0.00	0.00	0.00
8,600.00	0.00	0.00	8,561.14	-25.90	-658.59	77.71	0.00	0.00	0.00
8,700.00	0.00	0.00	8,661.14	-25.90	-658.59	77.71	0.00	0.00	0.00
8,778.86	0.00	0.00	8,740.00	-25.90	-658.59	77.71	0.00	0.00	0.00
<b>Avalon</b>									
8,800.00	0.00	0.00	8,761.14	-25.90	-658.59	77.71	0.00	0.00	0.00
8,900.00	0.00	0.00	8,861.14	-25.90	-658.59	77.71	0.00	0.00	0.00
9,000.00	0.00	0.00	8,961.14	-25.90	-658.59	77.71	0.00	0.00	0.00

## Titan Directional Drilling

## Survey Report

<b>Company:</b>	Kaiser-Francis Oil Company	<b>Local Co-ordinate Reference:</b>	Well Bell Lake Unit North 407H - Slot F
<b>Project:</b>	Permian NM E'83	<b>TVD Reference:</b>	est.GL+KB @ 3507.00usft (planning)
<b>Site:</b>	BLUN Pad 6	<b>MD Reference:</b>	est.GL+KB @ 3507.00usft (planning)
<b>Well:</b>	Bell Lake Unit North 407H	<b>North Reference:</b>	Grid
<b>Wellbore:</b>	#407H OH	<b>Survey Calculation Method:</b>	Minimum Curvature
<b>Design:</b>	Plan #1	<b>Database:</b>	EDM 5k-14

## Planned Survey

Measured Depth (usft)	Inclination (°)	Azimuth (°)	Vertical Depth (usft)	+N/-S (usft)	+E/-W (usft)	Vertical Section (usft)	Dogleg Rate (°/100usft)	Build Rate (°/100usft)	Turn Rate (°/100usft)
9,100.00	0.00	0.00	9,061.14	-25.90	-658.59	77.71	0.00	0.00	0.00
9,200.00	0.00	0.00	9,161.14	-25.90	-658.59	77.71	0.00	0.00	0.00
9,300.00	0.00	0.00	9,261.14	-25.90	-658.59	77.71	0.00	0.00	0.00
9,400.00	0.00	0.00	9,361.14	-25.90	-658.59	77.71	0.00	0.00	0.00
9,500.00	0.00	0.00	9,461.14	-25.90	-658.59	77.71	0.00	0.00	0.00
9,600.00	0.00	0.00	9,561.14	-25.90	-658.59	77.71	0.00	0.00	0.00
9,700.00	0.00	0.00	9,661.14	-25.90	-658.59	77.71	0.00	0.00	0.00
9,713.86	0.00	0.00	9,675.00	-25.90	-658.59	77.71	0.00	0.00	0.00
<b>1st Bone Spring</b>									
9,800.00	0.00	0.00	9,761.14	-25.90	-658.59	77.71	0.00	0.00	0.00
9,900.00	0.00	0.00	9,861.14	-25.90	-658.59	77.71	0.00	0.00	0.00
10,000.00	0.00	0.00	9,961.14	-25.90	-658.59	77.71	0.00	0.00	0.00
10,100.00	0.00	0.00	10,061.14	-25.90	-658.59	77.71	0.00	0.00	0.00
10,200.00	0.00	0.00	10,161.14	-25.90	-658.59	77.71	0.00	0.00	0.00
10,238.86	0.00	0.00	10,200.00	-25.90	-658.59	77.71	0.00	0.00	0.00
<b>2nd Bone Spring</b>									
10,300.00	0.00	0.00	10,261.14	-25.90	-658.59	77.71	0.00	0.00	0.00
10,400.00	0.00	0.00	10,361.14	-25.90	-658.59	77.71	0.00	0.00	0.00
10,500.00	0.00	0.00	10,461.14	-25.90	-658.59	77.71	0.00	0.00	0.00
10,600.00	0.00	0.00	10,561.14	-25.90	-658.59	77.71	0.00	0.00	0.00
10,700.00	0.00	0.00	10,661.14	-25.90	-658.59	77.71	0.00	0.00	0.00
10,738.86	0.00	0.00	10,700.00	-25.90	-658.59	77.71	0.00	0.00	0.00
<b>3rd Bone Spring Lime</b>									
10,800.00	0.00	0.00	10,761.14	-25.90	-658.59	77.71	0.00	0.00	0.00
10,900.00	0.00	0.00	10,861.14	-25.90	-658.59	77.71	0.00	0.00	0.00
11,000.00	0.00	0.00	10,961.14	-25.90	-658.59	77.71	0.00	0.00	0.00
11,065.86	0.00	0.00	11,027.00	-25.90	-658.59	77.71	0.00	0.00	0.00
<b>7 5/8"</b>									
11,100.00	0.00	0.00	11,061.14	-25.90	-658.59	77.71	0.00	0.00	0.00
11,165.90	0.00	0.00	11,127.04	-25.90	-658.59	77.71	0.00	0.00	0.00
11,200.00	3.41	180.02	11,161.12	-26.92	-658.59	78.72	10.00	10.00	0.00
11,239.06	7.32	180.02	11,200.00	-30.57	-658.59	82.36	10.00	10.00	0.00
<b>3rd Bone Spring</b>									
11,250.00	8.41	180.02	11,210.84	-32.06	-658.59	83.85	10.00	10.00	0.00
11,300.00	13.41	180.02	11,259.92	-41.52	-658.60	93.28	10.00	10.00	0.00
11,350.00	18.41	180.02	11,307.99	-55.23	-658.60	106.94	10.00	10.00	0.00
11,400.00	23.41	180.02	11,354.68	-73.06	-658.61	124.73	10.00	10.00	0.00
11,450.00	28.41	180.02	11,399.64	-94.91	-658.62	146.50	10.00	10.00	0.00
11,500.00	33.41	180.02	11,442.53	-120.58	-658.63	172.10	10.00	10.00	0.00
11,550.00	38.41	180.02	11,483.01	-149.90	-658.64	201.32	10.00	10.00	0.00
11,572.02	40.61	180.02	11,500.00	-163.91	-658.65	215.29	10.00	10.00	0.00
<b>Wolfcamp</b>									
11,600.00	43.41	180.02	11,520.79	-182.63	-658.66	233.96	10.00	10.00	0.00
11,650.00	48.41	180.02	11,555.56	-218.53	-658.67	269.75	10.00	10.00	0.00



## Titan Directional Drilling

## Survey Report

<b>Company:</b>	Kaiser-Francis Oil Company	<b>Local Co-ordinate Reference:</b>	Well Bell Lake Unit North 407H - Slot F
<b>Project:</b>	Permian NM E'83	<b>TVD Reference:</b>	est.GL+KB @ 3507.00usft (planning)
<b>Site:</b>	BLUN Pad 6	<b>MD Reference:</b>	est.GL+KB @ 3507.00usft (planning)
<b>Well:</b>	Bell Lake Unit North 407H	<b>North Reference:</b>	Grid
<b>Wellbore:</b>	#407H OH	<b>Survey Calculation Method:</b>	Minimum Curvature
<b>Design:</b>	Plan #1	<b>Database:</b>	EDM 5k-14

## Planned Survey

Measured Depth (usft)	Inclination (°)	Azimuth (°)	Vertical Depth (usft)	+N/-S (usft)	+E/-W (usft)	Vertical Section (usft)	Dogleg Rate (°/100usft)	Build Rate (°/100usft)	Turn Rate (°/100usft)
11,700.00	53.41	180.02	11,587.08	-257.33	-658.69	308.42	10.00	10.00	0.00
11,750.00	58.41	180.02	11,615.10	-298.72	-658.71	349.69	10.00	10.00	0.00
11,800.00	63.41	180.02	11,639.40	-342.40	-658.72	393.24	10.00	10.00	0.00
11,850.00	68.41	180.02	11,659.80	-388.03	-658.74	438.73	10.00	10.00	0.00
11,900.00	73.41	180.02	11,676.15	-435.27	-658.76	485.82	10.00	10.00	0.00
11,950.00	78.41	180.02	11,688.32	-483.75	-658.78	534.15	10.00	10.00	0.00
12,000.00	83.41	180.02	11,696.21	-533.10	-658.80	583.35	10.00	10.00	0.00
12,050.00	88.41	180.02	11,699.78	-582.96	-658.82	633.06	10.00	10.00	0.00
12,065.90	90.00	180.02	11,700.00	-598.86	-658.83	648.91	10.00	10.00	0.00
12,100.00	90.00	180.02	11,700.00	-632.96	-658.85	682.90	0.00	0.00	0.00
12,200.00	90.00	180.02	11,700.00	-732.96	-658.89	782.59	0.00	0.00	0.00
12,300.00	90.00	180.02	11,700.00	-832.96	-658.93	882.28	0.00	0.00	0.00
12,400.00	90.00	180.02	11,700.00	-932.96	-658.97	981.98	0.00	0.00	0.00
12,500.00	90.00	180.02	11,700.00	-1,032.96	-659.01	1,081.67	0.00	0.00	0.00
12,600.00	90.00	180.02	11,700.00	-1,132.96	-659.06	1,181.36	0.00	0.00	0.00
12,700.00	90.00	180.02	11,700.00	-1,232.96	-659.10	1,281.05	0.00	0.00	0.00
12,800.00	90.00	180.02	11,700.00	-1,332.96	-659.14	1,380.75	0.00	0.00	0.00
12,900.00	90.00	180.02	11,700.00	-1,432.96	-659.18	1,480.44	0.00	0.00	0.00
13,000.00	90.00	180.02	11,700.00	-1,532.96	-659.22	1,580.13	0.00	0.00	0.00
13,100.00	90.00	180.02	11,700.00	-1,632.96	-659.27	1,679.82	0.00	0.00	0.00
13,200.00	90.00	180.02	11,700.00	-1,732.96	-659.31	1,779.52	0.00	0.00	0.00
13,300.00	90.00	180.02	11,700.00	-1,832.96	-659.35	1,879.21	0.00	0.00	0.00
13,400.00	90.00	180.02	11,700.00	-1,932.96	-659.39	1,978.90	0.00	0.00	0.00
13,500.00	90.00	180.02	11,700.00	-2,032.96	-659.43	2,078.59	0.00	0.00	0.00
13,600.00	90.00	180.02	11,700.00	-2,132.96	-659.48	2,178.29	0.00	0.00	0.00
13,700.00	90.00	180.02	11,700.00	-2,232.96	-659.52	2,277.98	0.00	0.00	0.00
13,800.00	90.00	180.02	11,700.00	-2,332.96	-659.56	2,377.67	0.00	0.00	0.00
13,900.00	90.00	180.02	11,700.00	-2,432.96	-659.60	2,477.36	0.00	0.00	0.00
14,000.00	90.00	180.02	11,700.00	-2,532.96	-659.64	2,577.06	0.00	0.00	0.00
14,100.00	90.00	180.02	11,700.00	-2,632.96	-659.69	2,676.75	0.00	0.00	0.00
14,200.00	90.00	180.02	11,700.00	-2,732.96	-659.73	2,776.44	0.00	0.00	0.00
14,300.00	90.00	180.02	11,700.00	-2,832.96	-659.77	2,876.13	0.00	0.00	0.00
14,400.00	90.00	180.02	11,700.00	-2,932.96	-659.81	2,975.83	0.00	0.00	0.00
14,500.00	90.00	180.02	11,700.00	-3,032.96	-659.85	3,075.52	0.00	0.00	0.00
14,600.00	90.00	180.02	11,700.00	-3,132.96	-659.90	3,175.21	0.00	0.00	0.00
14,700.00	90.00	180.02	11,700.00	-3,232.96	-659.94	3,274.90	0.00	0.00	0.00
14,800.00	90.00	180.02	11,700.00	-3,332.96	-659.98	3,374.60	0.00	0.00	0.00
14,900.00	90.00	180.02	11,700.00	-3,432.96	-660.02	3,474.29	0.00	0.00	0.00
15,000.00	90.00	180.02	11,700.00	-3,532.96	-660.06	3,573.98	0.00	0.00	0.00
15,100.00	90.00	180.02	11,700.00	-3,632.96	-660.11	3,673.67	0.00	0.00	0.00
15,200.00	90.00	180.02	11,700.00	-3,732.96	-660.15	3,773.37	0.00	0.00	0.00
15,300.00	90.00	180.02	11,700.00	-3,832.96	-660.19	3,873.06	0.00	0.00	0.00
15,400.00	90.00	180.02	11,700.00	-3,932.96	-660.23	3,972.75	0.00	0.00	0.00
15,500.00	90.00	180.02	11,700.00	-4,032.96	-660.28	4,072.44	0.00	0.00	0.00

## Titan Directional Drilling

## Survey Report

<b>Company:</b>	Kaiser-Francis Oil Company	<b>Local Co-ordinate Reference:</b>	Well Bell Lake Unit North 407H - Slot F
<b>Project:</b>	Permian NM E'83	<b>TVD Reference:</b>	est.GL+KB @ 3507.00usft (planning)
<b>Site:</b>	BLUN Pad 6	<b>MD Reference:</b>	est.GL+KB @ 3507.00usft (planning)
<b>Well:</b>	Bell Lake Unit North 407H	<b>North Reference:</b>	Grid
<b>Wellbore:</b>	#407H OH	<b>Survey Calculation Method:</b>	Minimum Curvature
<b>Design:</b>	Plan #1	<b>Database:</b>	EDM 5k-14

## Planned Survey

Measured Depth (usft)	Inclination (°)	Azimuth (°)	Vertical Depth (usft)	+N/-S (usft)	+E/-W (usft)	Vertical Section (usft)	Dogleg Rate (°/100usft)	Build Rate (°/100usft)	Turn Rate (°/100usft)
15,600.00	90.00	180.02	11,700.00	-4,132.96	-660.32	4,172.14	0.00	0.00	0.00
15,700.00	90.00	180.02	11,700.00	-4,232.96	-660.36	4,271.83	0.00	0.00	0.00
15,800.00	90.00	180.02	11,700.00	-4,332.96	-660.40	4,371.52	0.00	0.00	0.00
15,900.00	90.00	180.02	11,700.00	-4,432.96	-660.44	4,471.21	0.00	0.00	0.00
16,000.00	90.00	180.02	11,700.00	-4,532.96	-660.49	4,570.91	0.00	0.00	0.00
16,100.00	90.00	180.02	11,700.00	-4,632.96	-660.53	4,670.60	0.00	0.00	0.00
16,200.00	90.00	180.02	11,700.00	-4,732.96	-660.57	4,770.29	0.00	0.00	0.00
16,300.00	90.00	180.02	11,700.00	-4,832.96	-660.61	4,869.98	0.00	0.00	0.00
16,400.00	90.00	180.02	11,700.00	-4,932.96	-660.65	4,969.68	0.00	0.00	0.00
16,500.00	90.00	180.02	11,700.00	-5,032.96	-660.70	5,069.37	0.00	0.00	0.00
16,600.00	90.00	180.02	11,700.00	-5,132.96	-660.74	5,169.06	0.00	0.00	0.00
16,700.00	90.00	180.02	11,700.00	-5,232.96	-660.78	5,268.75	0.00	0.00	0.00
16,800.00	90.00	180.02	11,700.00	-5,332.96	-660.82	5,368.45	0.00	0.00	0.00
16,900.00	90.00	180.02	11,700.00	-5,432.96	-660.86	5,468.14	0.00	0.00	0.00
17,000.00	90.00	180.02	11,700.00	-5,532.96	-660.91	5,567.83	0.00	0.00	0.00
17,100.00	90.00	180.02	11,700.00	-5,632.96	-660.95	5,667.52	0.00	0.00	0.00
17,200.00	90.00	180.02	11,700.00	-5,732.96	-660.99	5,767.22	0.00	0.00	0.00
17,300.00	90.00	180.02	11,700.00	-5,832.96	-661.03	5,866.91	0.00	0.00	0.00
17,400.00	90.00	180.02	11,700.00	-5,932.96	-661.07	5,966.60	0.00	0.00	0.00
17,500.00	90.00	180.02	11,700.00	-6,032.96	-661.12	6,066.29	0.00	0.00	0.00
17,600.00	90.00	180.02	11,700.00	-6,132.96	-661.16	6,165.98	0.00	0.00	0.00
17,700.00	90.00	180.02	11,700.00	-6,232.96	-661.20	6,265.68	0.00	0.00	0.00
17,800.00	90.00	180.02	11,700.00	-6,332.96	-661.24	6,365.37	0.00	0.00	0.00
17,900.00	90.00	180.02	11,700.00	-6,432.96	-661.28	6,465.06	0.00	0.00	0.00
18,000.00	90.00	180.02	11,700.00	-6,532.96	-661.33	6,564.75	0.00	0.00	0.00
18,100.00	90.00	180.02	11,700.00	-6,632.96	-661.37	6,664.45	0.00	0.00	0.00
18,200.00	90.00	180.02	11,700.00	-6,732.96	-661.41	6,764.14	0.00	0.00	0.00
18,300.00	90.00	180.02	11,700.00	-6,832.96	-661.45	6,863.83	0.00	0.00	0.00
18,400.00	90.00	180.02	11,700.00	-6,932.96	-661.49	6,963.52	0.00	0.00	0.00
18,500.00	90.00	180.02	11,700.00	-7,032.96	-661.54	7,063.22	0.00	0.00	0.00
18,600.00	90.00	180.02	11,700.00	-7,132.96	-661.58	7,162.91	0.00	0.00	0.00
18,700.00	90.00	180.02	11,700.00	-7,232.96	-661.62	7,262.60	0.00	0.00	0.00
18,800.00	90.00	180.02	11,700.00	-7,332.96	-661.66	7,362.29	0.00	0.00	0.00
18,900.00	90.00	180.02	11,700.00	-7,432.96	-661.70	7,461.99	0.00	0.00	0.00
19,000.00	90.00	180.02	11,700.00	-7,532.96	-661.75	7,561.68	0.00	0.00	0.00
19,100.00	90.00	180.02	11,700.00	-7,632.96	-661.79	7,661.37	0.00	0.00	0.00
19,200.00	90.00	180.02	11,700.00	-7,732.96	-661.83	7,761.06	0.00	0.00	0.00
19,300.00	90.00	180.02	11,700.00	-7,832.96	-661.87	7,860.76	0.00	0.00	0.00
19,400.00	90.00	180.02	11,700.00	-7,932.96	-661.91	7,960.45	0.00	0.00	0.00
19,500.00	90.00	180.02	11,700.00	-8,032.96	-661.96	8,060.14	0.00	0.00	0.00
19,600.00	90.00	180.02	11,700.00	-8,132.96	-662.00	8,159.83	0.00	0.00	0.00
19,700.00	90.00	180.02	11,700.00	-8,232.96	-662.04	8,259.53	0.00	0.00	0.00
19,800.00	90.00	180.02	11,700.00	-8,332.96	-662.08	8,359.22	0.00	0.00	0.00

## Titan Directional Drilling

## Survey Report

<b>Company:</b>	Kaiser-Francis Oil Company	<b>Local Co-ordinate Reference:</b>	Well Bell Lake Unit North 407H - Slot F
<b>Project:</b>	Permian NM E'83	<b>TVD Reference:</b>	est.GL+KB @ 3507.00usft (planning)
<b>Site:</b>	BLUN Pad 6	<b>MD Reference:</b>	est.GL+KB @ 3507.00usft (planning)
<b>Well:</b>	Bell Lake Unit North 407H	<b>North Reference:</b>	Grid
<b>Wellbore:</b>	#407H OH	<b>Survey Calculation Method:</b>	Minimum Curvature
<b>Design:</b>	Plan #1	<b>Database:</b>	EDM 5k-14

## Planned Survey

Measured Depth (usft)	Inclination (°)	Azimuth (°)	Vertical Depth (usft)	+N/-S (usft)	+E/-W (usft)	Vertical Section (usft)	Dogleg Rate (°/100usft)	Build Rate (°/100usft)	Turn Rate (°/100usft)
19,844.65	90.00	180.02	11,700.00	-8,377.61	-662.10	8,403.73	0.00	0.00	0.00

## Casing Points

Measured Depth (usft)	Vertical Depth (usft)	Name	Casing Diameter (")	Hole Diameter (")
1,250.00	1,250.00	10 3/4"	10-3/4	13-1/2
11,065.86	11,027.00	7 5/8"	7-5/8	9-7/8

## Formations

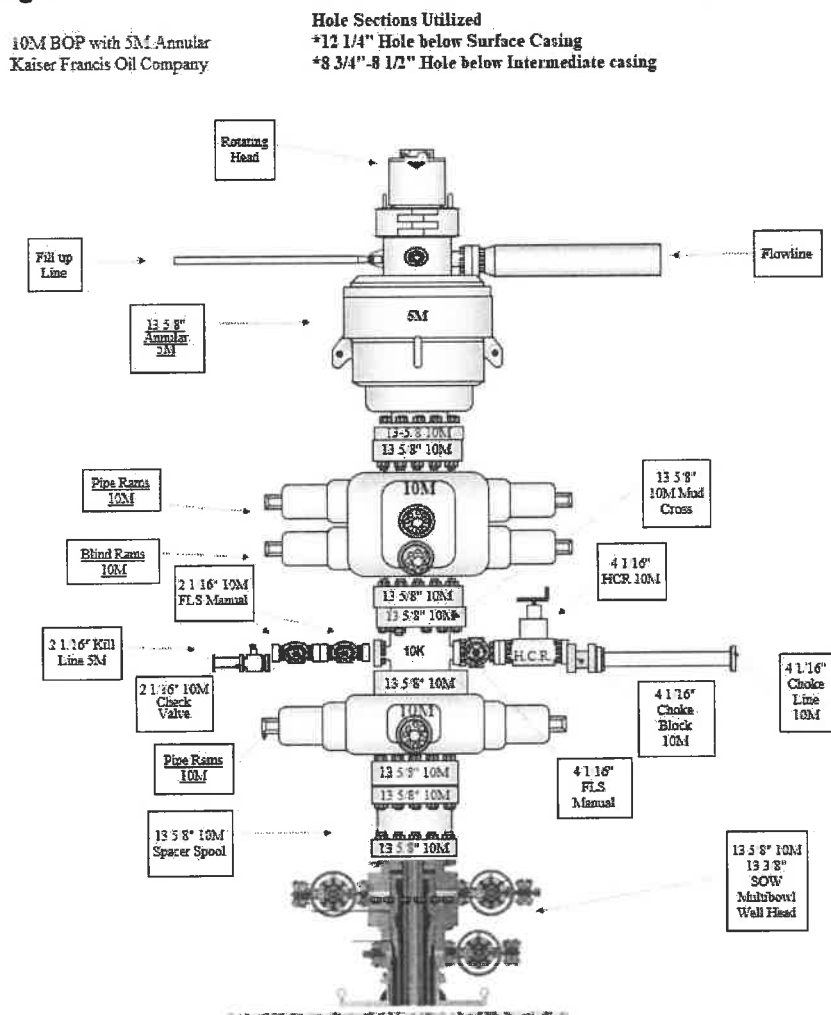
Measured Depth (usft)	Vertical Depth (usft)	Name	Lithology	Dip (°)	Dip Direction (°)
1,200.00	1,200.00	Rustler			
1,475.02	1,475.00	Salado			
1,801.05	1,800.00	Top of Salt			
4,773.20	4,750.00	Base of Salt			
5,075.45	5,050.00	Lamar			
5,377.70	5,350.00	Bell Canyon			
6,586.72	6,550.00	Cherry Canyon			
8,238.86	8,200.00	Brushy Canyon			
8,463.86	8,425.00	Bone Spring			
8,778.86	8,740.00	Avalon			
9,713.86	9,675.00	1st Bone Spring			
10,238.86	10,200.00	2nd Bone Spring			
10,738.86	10,700.00	3rd Bone Spring Lime			
11,239.06	11,200.00	3rd Bone Spring			
11,572.02	11,500.00	Wolfcamp			



## Kaiser Francis Oil Co. 10K Annular Variance Request

Kaiser Francis Oil Co. request a variance to use a 5K psi annular BOP with a 10K BOP stack. Attached are Kaiser Francis Oil Co. minimum processes required to assure a proper shut-in while drilling, tripping, open hole, and moving BHA through the BOPs. A minimum of one well control drill will be performed weekly per tour, to regulate compliance with well control procedures and plans. Drills will be determined by operations, and will vary on drills conducted. Drills will consist of but are not limited to pit, trip, open hole, and choke drills. This well control plan will be available for review to all rig personnel. A copy of well control plan will be located in the Kaiser Francis Oil Co. representative's office on location, and on the rig floor during drilling operations. All BOP equipment will be tested per Onshore O&G Order No. 2 with the exception of the 5K annular which will be tested to 70% of it rated working pressure.

### A. BOP Diagram



## Kaiser Francis Oil Co. 10K Annular Variance Request

### B. Component and Preventer Compatibility Table

Component	OD	Preventer	RWP
Drill Pipe	4 1/2"	Upper VBR: 3.5 – 5.5 Lower VBR: 3.5 – 5.5	10M
Heavyweight Drill Pipe	4 1/2"	Upper VBR: 3.5 – 5.5 Lower VBR: 3.5 – 5.5	10M
Drill Collars & MWD Tools	6 1/4"-4 3/4"	Annular Upper VBR: 3.5 – 5.5 Lower VBR: 3.5 – 5.5	5M 10M 10M
Mud Motor	8"-4 3/4"	Annular Upper VBR: 3.5 – 5.5 Lower VBR: 3.5 – 5.5	5M 10M 10M
Production Casing	5 1/2"	Upper VBR: 3.5 – 5.5 Lower VBR: 3.5 – 5.5	10M
Surface Casing	10-3/4"	Annular	5M
Intermediate Casing	7-5/8"	Annular	5M
All	0 – 13 5/8"	Annular	5M
Open Hole		Blind Rams	10M

### C. Well Control Procedures

- I. General Procedures While Drilling:
  - a. Sound alarm – alert crew
  - b. Space out drill string
  - c. Shut down pumps and stop rotary
  - d. Open HCR
  - e. Shut well in, utilizing upper VBRs
  - f. Close choke
  - g. Confirm shut in
  - h. Notify rig manager and KFOC, Inc. company representative
  - i. Call KFOC, Inc. engineer
  - j. Read and record:
    - i. Shut in drill pressure and shut in casing pressure
    - ii. Pit gain
    - iii. Time
  - k. Regroup, identify forward plan
- II. General Procedures While Tripping:
  - a. Sound alarm – alert crew
  - b. Stab full opening safety valve and close
  - c. Space out drill string
  - d. Open HCR

**Kaiser Francis Oil Co.  
10K Annular Variance Request**

- e. Shut well in, utilizing upper VBRs
  - f. Close choke
  - g. Confirm shut in
  - h. Notify rig manager and KFOC company representative
  - i. Call KFOC engineer
  - j. Read and record:
    - i. Shut in drill pressure and shut in casing pressure
    - ii. Pit gain
    - iii. Time
  - k. Regroup, identify forward plan
- III. General Procedures While Running Casing:
- a. Sound alarm – alert crew
  - b. Stab full opening safety valve and close
  - c. Space out drill string
  - d. Open HCR
  - e. Shut well in, utilizing upper VBRs
  - f. Close choke
  - g. Confirm shut in
  - h. Notify rig manager and KFOC company representative
  - i. Call KFOC engineer
  - j. Read and record:
    - i. Shut in drill pressure and shut in casing pressure
    - ii. Pit gain
    - iii. Time
  - k. Regroup, identify forward plan
- IV. General Procedures With No Pipe in Hole (Open Hole):
- a. Sound alarm – alert crew
  - b. Open HCR
  - c. Shut well in with blind rams
  - d. Close choke
  - e. Confirm shut in
  - f. Notify rig manager and KFOC company representative
  - g. Call KFOC engineer
  - h. Read and record:
    - i. Shut in drill pressure and shut in casing pressure
    - ii. Pit gain
    - iii. Time
  - j. Regroup, identify forward plan
- V. General Procedures While Pulling BHA Through BOP Stack:
- 1. Prior to pulling last joint of drill pipe through stack A.
    - Perform flow check and if flowing:
      - a. Sound alarm – alert crew
      - b. Stab full opening safety valve and close
      - c. Space out drill string with tool joint just beneath upper pipe ram

**Kaiser Francis Oil Co.  
10K Annular Variance Request**

- d. Open HCR
  - e. Shut well in utilizing upper VBRs
  - f. Close choke
  - g. Confirm shut in
  - h. Notify rig manager and KFOC company representative
  - i. Call KFOC engineer
  - j. Read and record:
    - i. Shut in drill pressure and shut in casing pressure
    - ii. Pit gain
    - iii. Time
  - k. Regroup, identify forward plan
2. With BHA in the BOP stack and compatible ram preventer and pipe combo immediately available.
- a. Sound alarm – alert crew
  - b. Stab full opening safety valve and close
  - c. Space out drill string with tool joint just beneath upper pipe ram
  - d. Open HCR
  - e. Shut well in utilizing upper VBRs
  - f. Close choke
  - g. Confirm shut in
  - h. Notify rig manager and KFOC. company representative
  - i. Call KFOC engineer
  - j. Read and record:
    - i. Shut in drill pressure and shut in casing pressure
    - ii. Pit gain
    - iii. Time
  - k. Regroup, identify forward plan
3. With BHA in the BOP stack and no compatible ram preventer and pipe combo immediately available
- a. Sound alarm – alert crew
  - b. If possible to pick up high enough, pull string clear of the stack and follow Open Hole scenario (III)
  - c. If impossible to pick up high enough to pull the string clear of the stack:
    - i. Stab crossover, make up one joint/stand of drill pipe and full opening safety valve and close
    - ii. Space out drill string with tool joint just beneath the upper pipe ram
    - iii. Open HCR
    - iv. Shut in utilizing upper VBRs
    - v. Close choke
    - vi. Confirm shut in
    - vii. Notify rig manager and Mesquite SWD, Inc. company representative
    - viii. Read and record:
      - 1. Shut in drill pipe pressure and shut in casing pressure
      - 2. Pit gain
      - 3. Time

**Kaiser Francis Oil Co.  
10K Annular Variance Request**

d. Regroup and identify forward plan

\*\* If annular is used to shut in well and pressure build to or is expected to get to 50% of RWP, confirm space-out and swap to upper VBRs for shut in.



U.S. Department of the Interior  
BUREAU OF LAND MANAGEMENT

## SUPO Data Report

01/22/2021

**APD ID:** 10400053835

**Submission Date:** 02/03/2020

Highlighted data  
reflects the most  
recent changes

**Operator Name:** KAISER FRANCIS OIL COMPANY

**Well Name:** BELL LAKE UNIT NORTH

**Well Number:** 407H

[Show Final Text](#)

**Well Type:** OIL WELL

**Well Work Type:** Drill

### Section 1 - Existing Roads

**Will existing roads be used?** YES

**Existing Road Map:**

BLUN\_407H\_Existing\_Roads\_20200129111704.pdf

**Existing Road Purpose:** ACCESS,FLUID TRANSPORT

**Row(s) Exist?** NO

**ROW ID(s)**

**ID:**

**Do the existing roads need to be improved?** NO

**Existing Road Improvement Description:**

**Existing Road Improvement Attachment:**

### Section 2 - New or Reconstructed Access Roads

**Will new roads be needed?** YES

**New Road Map:**

BLUN\_407H\_Access\_Road\_20200129111717.pdf

**New road type:** RESOURCE

**Length:** 762 Feet

**Width (ft.):** 30

**Max slope (%):** 2

**Max grade (%):** 2

**Army Corp of Engineers (ACOE) permit required?** N

**ACOE Permit Number(s):**

**New road travel width:** 20

**New road access erosion control:** Road construction requirements and regular maintenance would alleviate potential impacts to the access road from water erosion damage.

**New road access plan or profile prepared?** N

**New road access plan attachment:**

**Access road engineering design?** N

**Access road engineering design attachment:**

**Operator Name:** KAISER FRANCIS OIL COMPANY**Well Name:** BELL LAKE UNIT NORTH**Well Number:** 407H**Turnout?** N**Access surfacing type:** OTHER**Access topsoil source:** BOTH**Access surfacing type description:** Native caliche**Access onsite topsoil source depth:** 6**Offsite topsoil source description:** BLM's caliche pit in SWSW Section 22-T24-R34E or NENE Section 20-T23S-R33E.

**Onsite topsoil removal process:** The top 6 inches of topsoil is pushed off and stockpiled along the side of the location. An approximate 160 X 160 area is used within the proposed well site to remove caliche. Subsoil is removed and stockpiled within the pad site to build the location and road. Then subsoil is pushed back in the hole and caliche is spread accordingly across proposed access road.

**Access other construction information:****Access miscellaneous information:****Number of access turnouts:****Access turnout map:**

### Drainage Control

**New road drainage crossing:** OTHER

**Drainage Control comments:** Proposed access road will be crowned and ditched and constructed of 6 inch rolled and compacted caliche. Water will be diverted where necessary to avoid ponding, maintain good drainage, and to be consistent with local drainage patterns.

**Road Drainage Control Structures (DCS) description:** The ditches will be 3' wide with 3:1 slopes

**Road Drainage Control Structures (DCS) attachment:**

### Access Additional Attachments

### Section 3 - Location of Existing Wells

**Existing Wells Map?** YES**Attach Well map:**

BLUN\_407H\_1\_Mile\_Map\_20200129111746.pdf

BLUN\_407H\_1\_Mile\_Data\_20200129111747.pdf

### Section 4 - Location of Existing and/or Proposed Production Facilities

**Submit or defer a Proposed Production Facilities plan?** DEFER

**Estimated Production Facilities description:** Production facilities are planned for the south side of pad. Plan for initial wells: 2-1000 bbl water tanks and 5 -1000 bbl oil tanks, a temporary 6X20 horizontal 3-phase sep, a 48 X 10 3-phase sep, a 8 X 20 heater treater and a 48X 10 2-phase sep



**Operator Name:** KAISER FRANCIS OIL COMPANY**Well Name:** BELL LAKE UNIT NORTH**Well Number:** 407H**Section 5 - Location and Types of Water Supply****Water Source Table****Water source type:** OTHER**Describe type:** Brine Water**Water source use type:** INTERMEDIATE/PRODUCTION  
CASING**Source latitude:****Source longitude:****Source datum:****Water source permit type:** PRIVATE CONTRACT**Water source transport method:** TRUCKING**Source land ownership:** PRIVATE**Source transportation land ownership:** STATE**Water source volume (barrels):** 20000**Source volume (acre-feet):** 2.57786193**Source volume (gal):** 840000**Water source type:** OTHER**Describe type:** FRESH WATER**Water source use type:** STIMULATION  
OTHER  
SURFACE CASING**Describe use type:** ROAD/PAD CONSTRUCTION AND**Source latitude:****Source longitude:****Source datum:****Water source permit type:** PRIVATE CONTRACT**Water source transport method:** TRUCKING**Source land ownership:** PRIVATE**Source transportation land ownership:** OTHER**Describe transportation land ownership:** Source tract  
is a mixture of Federal, State and County.**Water source volume (barrels):** 250000**Source volume (acre-feet):** 32.223274**Source volume (gal):** 10500000

**Operator Name:** KAISER FRANCIS OIL COMPANY**Well Name:** BELL LAKE UNIT NORTH**Well Number:** 407H**Water source and transportation map:**

BLUN\_Pad\_6\_Wtr\_Source\_Map\_20200122133639.pdf

**Water source comments:** Source transportation land ownership is a mixture of Federal, State and County.**New water well?** N**New Water Well Info****Well latitude:****Well Longitude:****Well datum:****Well target aquifer:****Est. depth to top of aquifer(ft):****Est thickness of aquifer:****Aquifer comments:****Aquifer documentation:****Well depth (ft):****Well casing type:****Well casing outside diameter (in.):****Well casing inside diameter (in.):****New water well casing?****Used casing source:****Drilling method:****Drill material:****Grout material:****Grout depth:****Casing length (ft.):****Casing top depth (ft.):****Well Production type:****Completion Method:****Water well additional information:****State appropriation permit:****Additional information attachment:****Section 6 - Construction Materials****Using any construction materials:** YES**Construction Materials description:** On site caliche will be used for construction if sufficient. In the event insufficient quantities of caliche are available onsite, caliche will be trucked in from BLM's caliche pit in SWSW Section 22-T24-R34E or NENE Section 20-T23S-R33E.**Construction Materials source location attachment:****Section 7 - Methods for Handling Waste****Waste type:** DRILLING**Waste content description:** Drilling fluids and cuttings**Amount of waste:** 3900 barrels**Waste disposal frequency :** Weekly**Safe containment description:** All drilling fluids will be stored safely and disposed of properly

**Operator Name:** KAISER FRANCIS OIL COMPANY**Well Name:** BELL LAKE UNIT NORTH**Well Number:** 407H**Safe containmant attachment:****Waste disposal type:** HAUL TO COMMERCIAL FACILITY **Disposal location ownership:** COMMERCIAL**Disposal type description:****Disposal location description:** Cuttings will be hauled to R360's facility located in Section 27-T20S-R32E on US 62/180 at Halfway, NM**Waste type:** SEWAGE**Waste content description:** Human waste and grey water**Amount of waste:** 1000 gallons**Waste disposal frequency :** Weekly**Safe containment description:** Waste material will be stored safely and disposed of properly**Safe containmant attachment:****Waste disposal type:** HAUL TO COMMERCIAL FACILITY **Disposal location ownership:** COMMERCIAL**Disposal type description:****Disposal location description:** Trucked to an approved disposal facility (Carlsbad sewer plant SENW Section 10-T22S-R27E)**Waste type:** GARBAGE**Waste content description:** Miscellaneous trash**Amount of waste:** 500 pounds**Waste disposal frequency :** Weekly**Safe containment description:** Trash produced during drilling and completion operations will be collected in a trash container and disposed of properly**Safe containmant attachment:****Waste disposal type:** HAUL TO COMMERCIAL FACILITY **Disposal location ownership:** COMMERCIAL**Disposal type description:****Disposal location description:** Trucked to an approved disposal facility (Sandpoint Landfill (solid materials dump) NW/4 Section 11-T21S-R28E)**Reserve Pit****Reserve Pit being used?** NO**Temporary disposal of produced water into reserve pit?** NO**Reserve pit length (ft.)** **Reserve pit width (ft.)****Reserve pit depth (ft.)** **Reserve pit volume (cu. yd.)****Is at least 50% of the reserve pit in cut?****Reserve pit liner**

**Operator Name:** KAISER FRANCIS OIL COMPANY**Well Name:** BELL LAKE UNIT NORTH**Well Number:** 407H**Reserve pit liner specifications and installation description**

### Cuttings Area

**Cuttings Area being used?** NO**Are you storing cuttings on location?** Y**Description of cuttings location** Cuttings will be stored in roll off bins and hauled to R360 located in Section 27-T20S-R32E on US 62/180 near Halfway.**Cuttings area length (ft.)****Cuttings area width (ft.)****Cuttings area depth (ft.)****Cuttings area volume (cu. yd.)****Is at least 50% of the cuttings area in cut?****WCuttings area liner****Cuttings area liner specifications and installation description**

### Section 8 - Ancillary Facilities

**Are you requesting any Ancillary Facilities?:** N**Ancillary Facilities attachment:****Comments:**

### Section 9 - Well Site Layout

**Well Site Layout Diagram:**

BLUN\_407H\_Well\_Site\_Layout\_20200827131421.pdf

BLUN\_407H\_Pad\_6\_Drlg\_Layout\_20200911133216.pdf

**Comments:**

### Section 10 - Plans for Surface Reclamation

**Type of disturbance:** New Surface Disturbance**Multiple Well Pad Name:** NORTH BELL LAKE UNIT**Multiple Well Pad Number:** 6**Recontouring attachment:**

BLUN\_407H\_IR\_Plat3\_20200910075205.pdf

**Drainage/Erosion control construction:** During construction proper erosion control methods will be used to control erosion, runoff and siltation of the surrounding area.**Drainage/Erosion control reclamation:** Proper erosion control methods will be used on the area to control erosion, runoff and siltation of the surrounding area.

Operator Name: KAISER FRANCIS OIL COMPANY

Well Name: BELL LAKE UNIT NORTH

Well Number: 407H

<b>Well pad proposed disturbance (acres):</b> 5.96	<b>Well pad interim reclamation (acres):</b> 0.91	<b>Well pad long term disturbance (acres):</b> 5.05
<b>Road proposed disturbance (acres):</b> 0.53	<b>Road interim reclamation (acres):</b> 0	<b>Road long term disturbance (acres):</b> 0.53
<b>Powerline proposed disturbance (acres):</b> 0	<b>Powerline interim reclamation (acres):</b> 0	<b>Powerline long term disturbance (acres):</b> 0
<b>Pipeline proposed disturbance (acres):</b> 0	<b>Pipeline interim reclamation (acres):</b> 0	<b>Pipeline long term disturbance (acres):</b> 0
<b>Other proposed disturbance (acres):</b> 0	<b>Other interim reclamation (acres):</b> 0	<b>Other long term disturbance (acres):</b> 0
<b>Total proposed disturbance:</b> 6.49	<b>Total interim reclamation:</b> 0.91	<b>Total long term disturbance:</b> 5.58

**Disturbance Comments:**

**Reconstruction method:** The areas planned for interim reclamation will then be recontoured to the original contour if feasible, or if not feasible, to an interim contour that blends with the surrounding topography as much as possible. Where applicable, the fill material of the well pad will be backfilled into the cut to bring the area back to the original contour. The interim cut and fill slopes prior to re-seeding will not be steeper than a 3:1 ratio, unless the adjacent native topography is steeper. Note: Constructed slopes may be much steeper during drilling, but will be recontoured to the above ratios during interim reclamation.

**Topsoil redistribution:** Topsoil will be evenly respread and aggressively revegetated over the entire disturbed area not needed for all-weather operations

**Soil treatment:** To seed the area, the proper BLM seed mixture, free of noxious weeds, will be used. Final seedbed preparation will consist of contour cultivating to a depth of 4 to 6 inches within 24 hours prior to seeding, dozer tracking, or other imprinting in order to break the soil crust and create seed germination micro-sites.

**Existing Vegetation at the well pad:** The historic climax plant community is a grassland dominated by black grama, dropseeds, and blue stems with sand sage and shinnery oak distributed evenly throughout. Current landscape displays mesquite, shinnery oak, yucca, desert sage, fourwing saltbush, snakeweed, and bunch grasses

**Existing Vegetation at the well pad attachment:**

**Existing Vegetation Community at the road:** Refer to "Existing Vegetation at the well pad"

**Existing Vegetation Community at the road attachment:**

**Existing Vegetation Community at the pipeline:** Refer to "Existing Vegetation at the well pad"

**Existing Vegetation Community at the pipeline attachment:**

**Existing Vegetation Community at other disturbances:** None

**Existing Vegetation Community at other disturbances attachment:**

**Non native seed used?** N

**Non native seed description:**

**Seedling transplant description:**

**Will seedlings be transplanted for this project?** N

**Seedling transplant description attachment:**

**Will seed be harvested for use in site reclamation?** N

**Operator Name:** KAISER FRANCIS OIL COMPANY

**Well Name:** BELL LAKE UNIT NORTH

**Well Number:** 407H

**Seed harvest description:**

**Seed harvest description attachment:**

**Seed Management**

**Seed Table**

Seed Summary	
<b>Seed Type</b>	<b>Pounds/Acre</b>

**Total pounds/Acre:**

**Seed reclamation attachment:**

**Operator Contact/Responsible Official Contact Info**

**First Name:**

**Last Name:**

**Phone:**

**Email:**

**Seedbed prep:**

**Seed BMP:**

**Seed method:**

**Existing invasive species?** N

**Existing invasive species treatment description:**

**Existing invasive species treatment attachment:**

**Weed treatment plan description:** No invasive species present. Standard regular maintenance to maintain a clear location and road.

**Weed treatment plan attachment:**

**Monitoring plan description:** Identify areas supporting weeds prior to construction; prevent the introduction and spread of weeds from construction equipment during construction; and contain weed seeds and propagules by preventing segregated topsoil from being spread to adjacent areas. No invasive species present. Standard regular maintenance to maintain a clear location and road.

**Monitoring plan attachment:**

**Success standards:** To maintain all disturbed areas as per Gold Book standards

**Pit closure description:** N/A

**Pit closure attachment:**

**Section 11 - Surface Ownership**

**Operator Name:** KAISER FRANCIS OIL COMPANY

**Well Name:** BELL LAKE UNIT NORTH

**Well Number:** 407H

**Disturbance type:** WELL PAD

**Describe:**

**Surface Owner:** STATE GOVERNMENT

**Other surface owner description:**

**BIA Local Office:**

**BOR Local Office:**

**COE Local Office:**

**DOD Local Office:**

**NPS Local Office:**

**State Local Office:** NM STATE LAND OFFICE, 602 N CANAL ST B, CARLSBAD, NM 88220

**Military Local Office:**

**USFWS Local Office:**

**Other Local Office:**

**USFS Region:**

**USFS Forest/Grassland:**

**USFS Ranger District:**

**Disturbance type:** NEW ACCESS ROAD

**Describe:**

**Surface Owner:** STATE GOVERNMENT

**Other surface owner description:**

**BIA Local Office:**

**BOR Local Office:**

**COE Local Office:**

**DOD Local Office:**

**NPS Local Office:**

**State Local Office:** NM STATE LAND OFFICE, 602 N CANAL STE B, CARLSBAD NM 88220

**Military Local Office:**

**USFWS Local Office:**

**Other Local Office:**

**USFS Region:**

**USFS Forest/Grassland:**

**USFS Ranger District:**



**Operator Name:** KAISER FRANCIS OIL COMPANY

**Well Name:** BELL LAKE UNIT NORTH

**Well Number:** 407H

**Section 12 - Other Information**

**Right of Way needed?** N

**Use APD as ROW?**

**ROW Type(s):**

**ROW Applications**

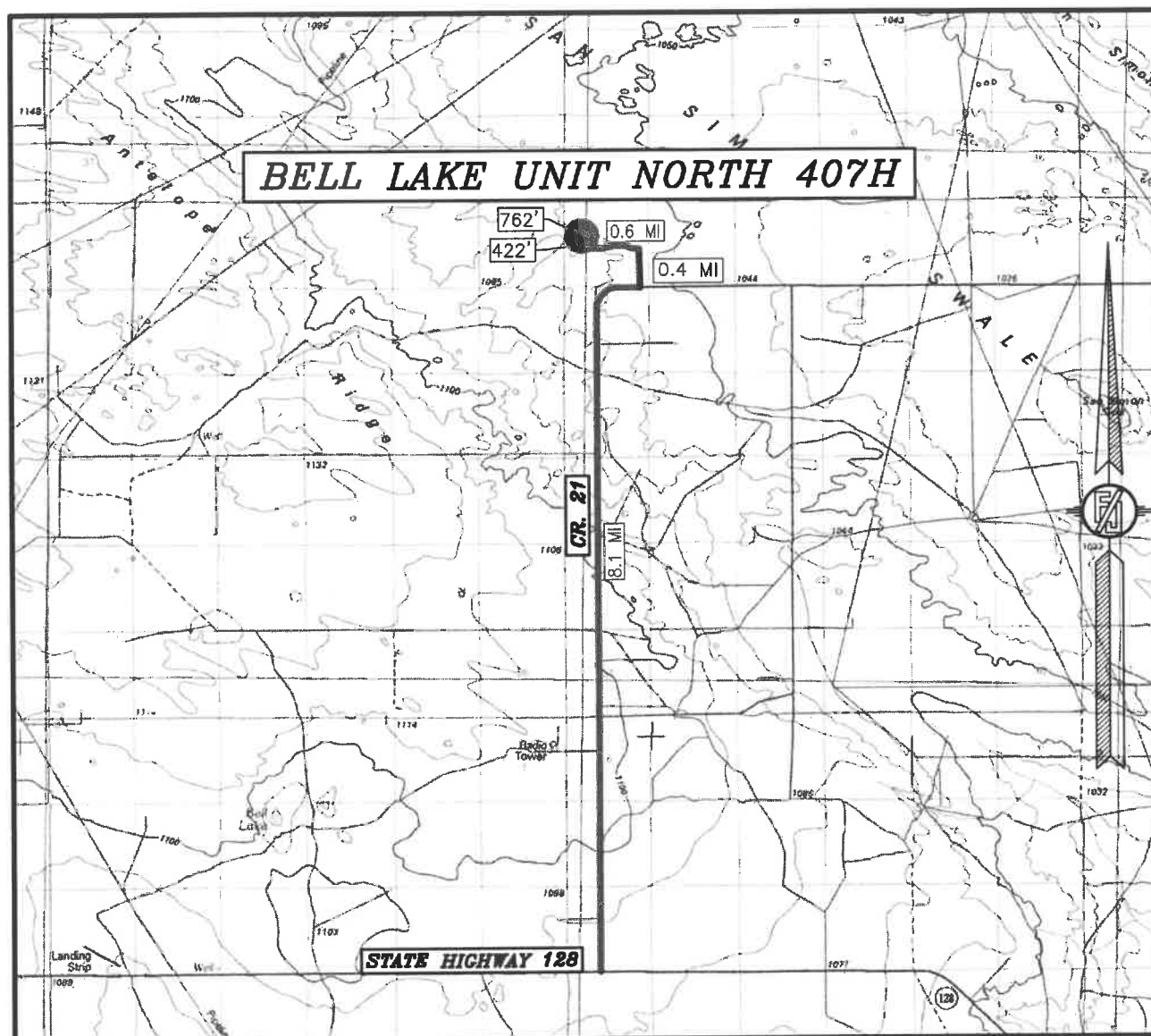
**SUPO Additional Information:**

**Use a previously conducted onsite?** Y

**Previous Onsite information:** Onsite conducted 10/24/2019 by Nik MacPhee (BLM), Eric Hansen (Kaiser-Francis) and Frank Jaramillo (Madron Surveying).

**Other SUPO Attachment**

SECTION 6, TOWNSHIP 23 SOUTH, RANGE 34 EAST, N.M.P.M.  
LEA COUNTY, STATE OF NEW MEXICO  
VICINITY MAP



DISTANCES IN MILES

NOT TO SCALE

**DIRECTIONS TO LOCATION**

FROM THE INTERSECTION OF STATE HIGHWAY 128 AND CR. 21 (DELAWARE BASIN) GO NORTH ON CR. 21 FOR APPROX. 8.1 MILES TO 90° BEND EAST, CONTINUE EAST TO SECOND CALICHE LEASE ROAD (KAISER-FRANCIS SIGNS) GO NORTH ON CALICHE LEASE ROAD APPROX. 0.4 OF A MILE, GO WEST 0.6 OF A MILE TO BEGIN ROAD SURVEY, FOLLOW ROAD SURVEY NORTH 422', CONTINUE NORTH APPROX. 112' THEN NORTHWEST APPROX. 650' (TOTAL OF 782') TO THE NORTHWEST PAD CORNER FOR THIS LOCATION.

**KAISER-FRANCIS OIL CO.**  
**BELL LAKE UNIT NORTH 407H**  
LOCATED 2005 FT. FROM THE NORTH LINE  
AND 1073.3 FT. FROM THE WEST LINE OF  
SECTION 6, TOWNSHIP 23 SOUTH,  
RANGE 34 EAST, N.M.P.M.  
LEA COUNTY, STATE OF NEW MEXICO

OCTOBER 16, 2019

SURVEY NO. 7640

MADRON SURVEYING, INC. 301 SOUTH CANAL (575) 234-3341

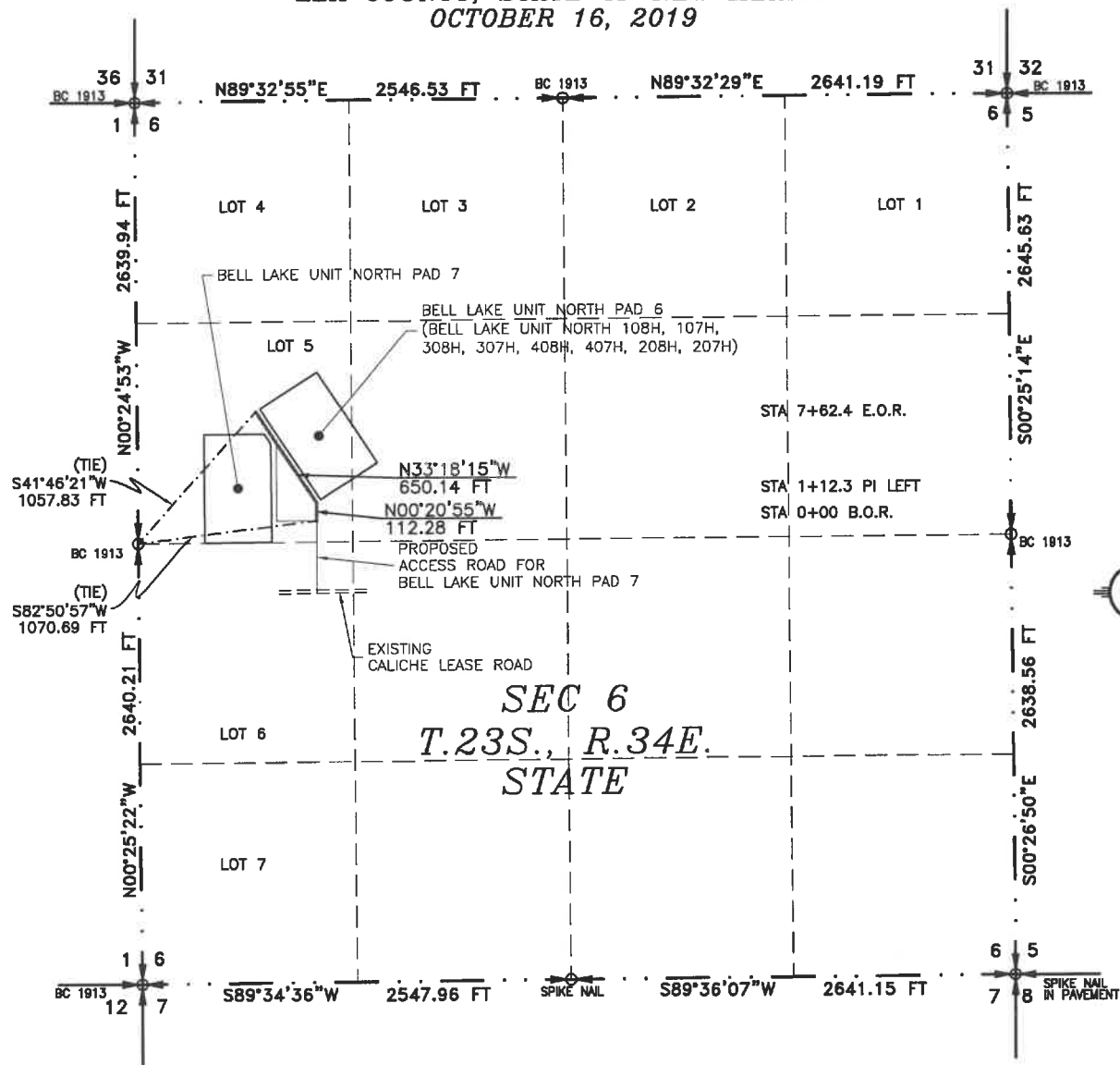
CARLSBAD, NEW MEXICO

**ACCESS ROAD PLAT**

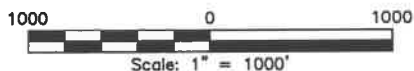
ACCESS ROAD TO THE BELL LAKE UNIT NORTH PAD 6 (BELL LAKE UNIT NORTH 108H, 107H, 308H, 307H, 408H, 407H, 208H, 207H)

**KAISER-FRANCIS OIL CO.**

CENTERLINE SURVEY OF AN ACCESS ROAD CROSSING  
SECTION 6, TOWNSHIP 23 SOUTH, RANGE 34 EAST, N.M.P.M.  
LEA COUNTY, STATE OF NEW MEXICO  
OCTOBER 16, 2019



SEE NEXT SHEET (2-2) FOR DESCRIPTION

**GENERAL NOTES**

- 1.) THE INTENT OF THIS ROUTE SURVEY IS TO ACQUIRE AN EASEMENT.
- 2.) BASIS OF BEARING AND DISTANCE IS NMSP EAST (NAD83) MODIFIED TO SURFACE COORDINATES. NAD 83 (FEET) AND NAVD 88 (FEET) COORDINATE SYSTEMS USED IN THE SURVEY.

SHEET: 1-2

MADRON SURVEYING, INC.

**SURVEYOR CERTIFICATE**

I, FILIMON F. JARAMILLO, A NEW MEXICO PROFESSIONAL SURVEYOR NO. 12797, HEREBY CERTIFY THAT I HAVE CONDUCTED AND AM RESPONSIBLE FOR THIS SURVEY, THAT THIS SURVEY IS TRUE AND CORRECT TO THE BEST OF MY KNOWLEDGE AND BELIEF, AND THAT THIS SURVEY AND PLAT MEET THE MINIMUM STANDARDS FOR LAND SURVEYING IN THE STATE OF NEW MEXICO.

IN WITNESS WHEREOF, THIS CERTIFICATE IS EXECUTED AT CARLSBAD,

NEW MEXICO, THIS 20 DAY OF DECEMBER 2019



MADRON SURVEYING, INC.  
301 SOUTH CANAL  
CARLSBAD, NEW MEXICO 88220  
Phone (575) 234-3341

SURVEY NO. 7640

CARLSBAD, NEW MEXICO

**ACCESS ROAD PLAT**

**ACCESS ROAD TO THE BELL LAKE UNIT NORTH PAD 6 (BELL LAKE UNIT NORTH 108H, 107H, 308H, 307H, 408H, 407H, 208H, 207H)**

**KAISER-FRANCIS OIL CO.  
CENTERLINE SURVEY OF AN ACCESS ROAD CROSSING  
SECTION 6, TOWNSHIP 23 SOUTH, RANGE 34 EAST, N.M.P.M.  
LEA COUNTY, STATE OF NEW MEXICO  
OCTOBER 16, 2019**

**DESCRIPTION**

A STRIP OF LAND 30 FEET WIDE CROSSING STATE OF NEW MEXICO LAND IN SECTION 6, TOWNSHIP 23 SOUTH, RANGE 34 EAST, N.M.P.M., LEA COUNTY, STATE OF NEW MEXICO AND BEING 15 FEET EACH SIDE OF THE FOLLOWING DESCRIBED CENTERLINE SURVEY:

BEGINNING AT A POINT WITHIN LOT 5 OF SAID SECTION 6, TOWNSHIP 23 SOUTH, RANGE 34 EAST, N.M.P.M., WHENCE THE WEST QUARTER CORNER OF SAID SECTION 6, TOWNSHIP 23 SOUTH, RANGE 34 EAST, N.M.P.M. BEARS S82°50'57"W, A DISTANCE OF 1070.69 FEET;

THENCE N00°20'55"W A DISTANCE OF 112.28 FEET TO AN ANGLE POINT OF THE LINE HEREIN DESCRIBED;

THENCE N33°18'15"W A DISTANCE OF 650.14 FEET THE TERMINUS OF THIS CENTERLINE SURVEY, WHENCE THE WEST QUARTER CORNER OF SAID SECTION 6, TOWNSHIP 23 SOUTH, RANGE 34 EAST, N.M.P.M. BEARS S41°46'21"W, A DISTANCE OF 1057.83 FEET;

SAID STRIP OF LAND BEING 762.42 FEET OR 46.21 RODS IN LENGTH, CONTAINING 0.525 ACRES MORE OR LESS AND BEING ALLOCATED BY FORTIES AS FOLLOWS:

LOT 5 762.42 L.F. 46.21 RODS 0.525 ACRES

**GENERAL NOTES**

- 1.) THE INTENT OF THIS ROUTE SURVEY IS TO ACQUIRE AN EASEMENT.
- 2.) BASIS OF BEARING AND DISTANCE IS NMSP EAST (NAD83) MODIFIED TO SURFACE COORDINATES. NAD 83 (FEET) AND NAVD 88 (FEET) COORDINATE SYSTEMS USED IN THE SURVEY.

**SHEET: 2-2**

**MADRON SURVEYING, INC.** 301 SOUTH CANAL (575) 234-3341 **CARLSBAD, NEW MEXICO**

**SURVEYOR CERTIFICATE**

I, FILIMON F. JARAMILLO, A NEW MEXICO PROFESSIONAL SURVEYOR NO. 12797, HEREBY CERTIFY THAT I HAVE CONDUCTED AND AM RESPONSIBLE FOR THIS SURVEY, THAT THIS SURVEY IS TRUE AND CORRECT TO THE BEST OF MY KNOWLEDGE AND BELIEF, AND THAT THIS SURVEY AND PLAT MEET THE MINIMUM STANDARDS FOR LAND SURVEYING IN THE STATE OF NEW MEXICO.

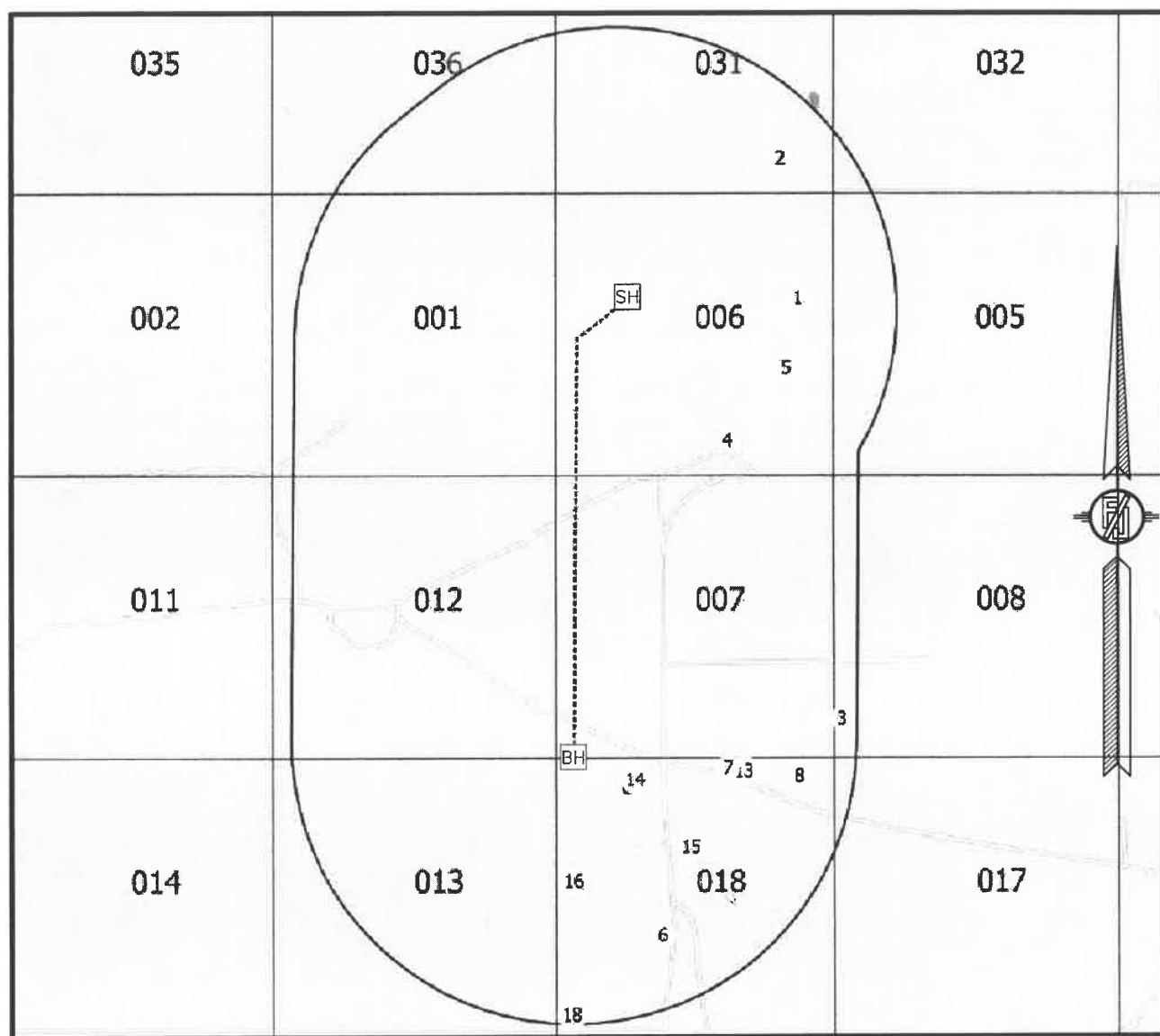
IN WITNESS WHEREOF, THIS CERTIFICATE IS EXECUTED AT CARLSBAD, NEW MEXICO, THIS 20 DAY OF DECEMBER 2019

  
FILIMON F. JARAMILLO PLS 12797  
PROFESSIONAL SURVEYOR

MADRON SURVEYING, INC.  
301 SOUTH CANAL  
CARLSBAD, NEW MEXICO 88220  
Phone (575) 234-3341

**SURVEY NO. 7640**

## 1-MILE MAP



NOT TO SCALE

[SH] SURFACE LOCATION

[BH] BOTTOM OF HOLE

[XX] WELLS WITHIN 1 MILE

----- WELL PATH

———— 1-MILE BOUNDARY

KAISER-FRANCIS OIL CO.  
**BELL LAKE UNIT NORTH 407H**  
 LOCATED 2005 FT. FROM THE NORTH LINE  
 AND 1073.3 FT. FROM THE WEST LINE OF  
 SECTION 6, TOWNSHIP 23 SOUTH,  
 RANGE 34 EAST, N.M.P.M.  
 LEA COUNTY, STATE OF NEW MEXICO

OCTOBER 16, 2019

SURVEY NO. 7640

MADRON SURVEYING, INC. 301 SOUTH CANAL (575) 234-3341

CARLSBAD, NEW MEXICO



Kaiser-Francis Oil Company  
Bell Lake Unit North 407H  
One Mile Radius Data

ID	API	wellname	well type	ustr	ogrid	ogrid_name	status	dir	elevation	MD	TVD	spud_year	latitude	longitude	Pool ID
1	30-025-33077	NORTH BELL LAKE FEDERAL #003	G	H-06-23S-34E	12361	KAISER-FRANCIS OIL CO	A	V	3456	17540	17540	1995	32.3356552	-103.5028305	[71840]
2	30-025-35592	BELL LAKE UNIT #022	G	P-31-22S-34E	12361	KAISER-FRANCIS OIL CO	A	V	341	13430	13430	2001	32.3427773	-103.503891	[96665]
3	30-025-44387	LEVATHAN STATE SWD #001	S	M-08-23S-34E	12361	KAISER-FRANCIS OIL CO	N	V	3470	0	0	9999	32.3139656	-103.5002005	[97869]
4	30-025-08483	BELL LAKE UNIT #006	G	O-06-23S-34E	12361	KAISER-FRANCIS OIL CO	P	V	3485	16506	16506	1959	32.3282585	-103.507103	[71840]
5	30-025-43033	BELL LAKE UNIT NORTH #230H	O	I-06-23S-34E	12361	KAISER-FRANCIS OIL CO	A	H	3456	18370	10226	2017	32.332037	-103.503544	[5150] B
6	30-025-20261	PRE-ONGARD WELL #009	O	K-18-23S-34E	214263	PRE-ONGARD WELL OPERATOR	P	O	0	0	8697	1900	32.3028488	-103.5110779	[5150] B
7	30-025-42917	STARCASTER 18 FEDERAL COM #003H	O	B-18-23S-34E	260297	BTA OIL PRODUCERS, LLC	A	H	3490	14995	10396	2015	32.3114532	-103.5070874	[5150] B
8	30-025-42025	STARCASTER 18 FEDERAL COM #004H	O	A-18-23S-34E	260297	BTA OIL PRODUCERS, LLC	A	H	3479	14836	10394	2015	32.3110123	-103.5027847	[5150] B
13	30-025-46151	STARCASTER 7909 FEDERAL COM #008H	O	B-18-23S-34E	260297	BTA OIL PRODUCERS, LLC	N	H	3489	0	0	9999	32.311302	-103.506067	[5150] B
13	30-025-46150	STARCASTER 7909 FEDERAL COM #007H	O	B-18-23S-34E	260297	BTA OIL PRODUCERS, LLC	N	H	3488	0	0	9999	32.311302	-103.506165	[5150] B
14	30-025-46149	STARCASTER 7909 FEDERAL COM #006H	O	C-18-23S-34E	260297	BTA OIL PRODUCERS, LLC	N	H	3507	0	0	9999	32.310424	-103.513079	[5150] B
14	30-025-46148	STARCASTER 7909 FEDERAL COM #005H	O	C-18-23S-34E	260297	BTA OIL PRODUCERS, LLC	N	H	3507	0	0	9999	32.310424	-103.513177	[5150] B
14	30-025-43213	STARCASTER 18 FEDERAL COM #002H	O	C-18-23S-34E	260297	BTA OIL PRODUCERS, LLC	A	H	3507	15228	10434	2016	32.310973	-103.5130795	[5150] B
14	30-025-43388	STARCASTER 18 FEDERAL COM #001H	O	C-18-23S-34E	260297	BTA OIL PRODUCERS, LLC	A	H	3509	15370	10590	2017	32.3108492	-103.5126964	[5150] B
15	30-025-26508	BELL LAKE 7909 IV-P #001	G	F-18-23S-34E	3002	BTA OIL PRODUCERS	P	V	3496	99999	14755	9999	32.3073921	-103.5093613	[71880]
16	30-025-41481	BELL LAKE 18 23 34 #001	O	2-18-23S-34E	4323	CHEVRON U S A INC	H	D	3525	5040	5037	2013	32.3056374	-103.5164185	[5150] B
18	30-025-43194	PALOMA BLANCO 19 FEDERAL #003H	O	4-18-23S-34E	6137	DEVON ENERGY PRODUCTION COMPANY, LP	N	H	3539	0	0	9999	32.2987482	-103.5162199	[5150] B
18	30-025-43192	PALOMA BLANCO 19 FEDERAL #001H	O	4-18-23S-34E	6137	DEVON ENERGY PRODUCTION COMPANY, LP	N	H	3541	0	0	9999	32.2987483	-103.5165434	[5150] B
18	30-025-43193	PALOMA BLANCO 19 FEDERAL #002H	O	4-18-23S-34E	6137	DEVON ENERGY PRODUCTION COMPANY, LP	N	H	3540	0	0	9999	32.2987483	-103.5163816	[5150] B



# Bell Lake Unit North - Pad 6

Water Source Map

BLUN  
Pad 6

## Location of Water Source Wells

Malaga I Brine	NE/4 Section 20-T24S-R29E
Malaga II Brine	NE/4 Section 12-T23S-R28E
128 Fresh	SW/4 Section 31-T22S-R30E
Pulley Fresh	NW/4 Section 26-T24S-R28E



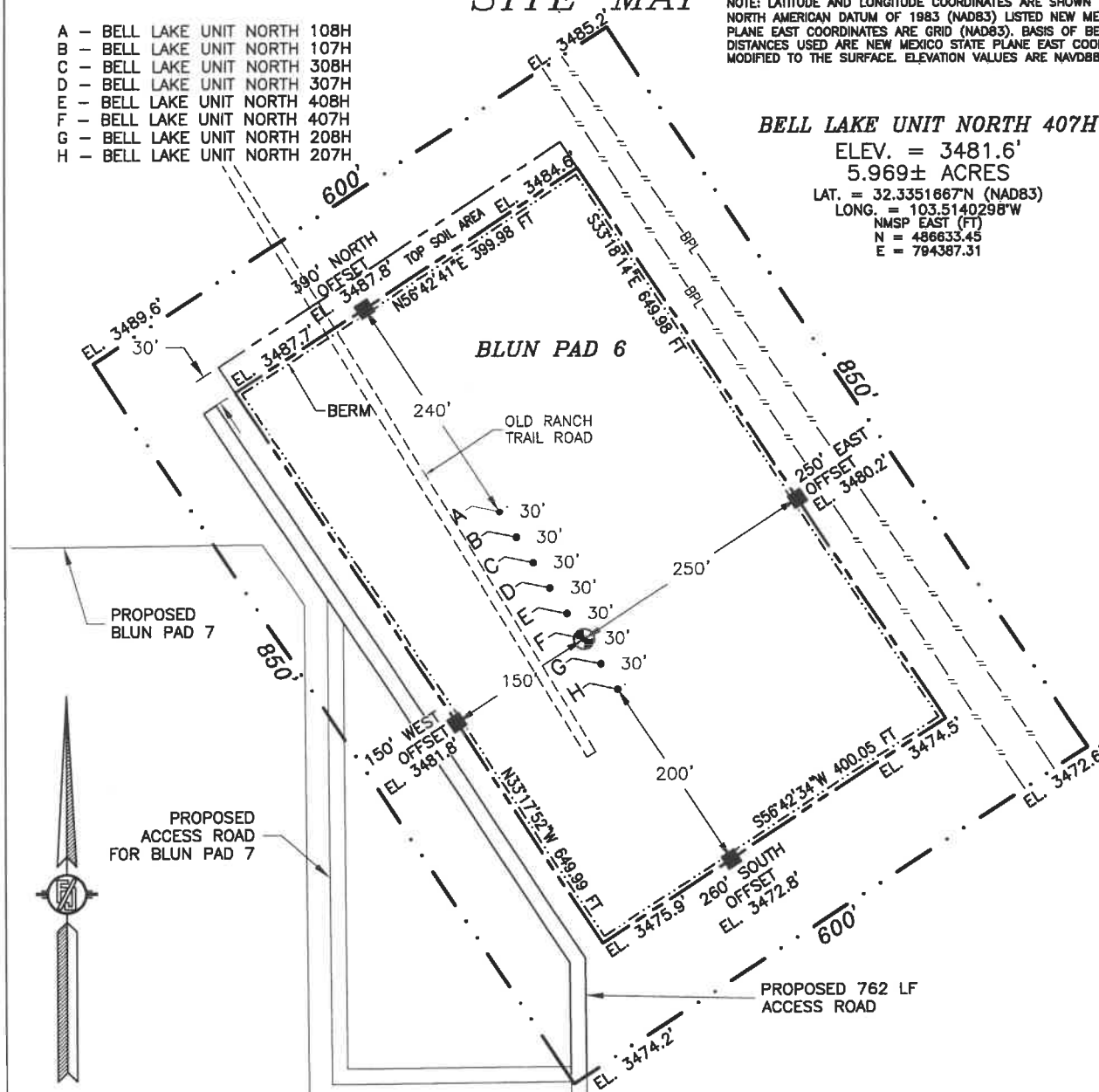
SECTION 6, TOWNSHIP 23 SOUTH, RANGE 34 EAST, N.M.P.M.  
LEA COUNTY, STATE OF NEW MEXICO  
**SITE MAP**

- A - BELL LAKE UNIT NORTH 108H
- B - BELL LAKE UNIT NORTH 107H
- C - BELL LAKE UNIT NORTH 308H
- D - BELL LAKE UNIT NORTH 307H
- E - BELL LAKE UNIT NORTH 408H
- F - BELL LAKE UNIT NORTH 407H
- G - BELL LAKE UNIT NORTH 208H
- H - BELL LAKE UNIT NORTH 207H

NOTE: LATITUDE AND LONGITUDE COORDINATES ARE SHOWN USING THE NORTH AMERICAN DATUM OF 1983 (NAD83) LISTED NEW MEXICO STATE PLANE EAST COORDINATES ARE GRID (NAD83). BASIS OF BEARING AND DISTANCES USED ARE NEW MEXICO STATE PLANE EAST COORDINATES MODIFIED TO THE SURFACE. ELEVATION VALUES ARE NAVD83.

**BELL LAKE UNIT NORTH 407H**

ELEV. = 3481.6'  
5.969± ACRES  
LAT. = 32.3351667°N (NAD83)  
LONG. = 103.5140298°W  
NMSP EAST (FT)  
N = 486633.45  
E = 794387.31



015 75 150 300  
SCALE 1" = 150'

**DIRECTIONS TO LOCATION**

FROM THE INTERSECTION OF STATE HIGHWAY 128 AND CR. 21 (DELAWARE BASIN) GO NORTH ON CR. 21 FOR APPROX. 8.1 MILES TO 90° BEND EAST, CONTINUE EAST TO SECOND CALICHE LEASE ROAD (KAISER-FRANCIS SIGNS) GO NORTH ON CALICHE LEASE ROAD APPROX. 0.4 OF A MILE, GO WEST 0.6 OF A MILE TO BEGIN ROAD SURVEY, FOLLOW ROAD SURVEY NORTH 422', CONTINUE NORTH APPROX. 112' THEN NORTHWEST APPROX. 650' (TOTAL OF 782') TO THE NORTHWEST PAD CORNER FOR THIS LOCATION.

I, FILMON F. JARAMILLO, A NEW MEXICO REGISTERED PROFESSIONAL SURVEYOR CERTIFY THAT I CONDUCTED AND AM RESPONSIBLE FOR THIS SURVEY, THAT THIS SURVEY WAS CONDUCTED TO THE BEST OF MY KNOWLEDGE AND BELIEF, AND THAT I HAVE MET THE MINIMUM STANDARDS FOR SUCH SURVEYING.

KAISER-FRANCIS OIL CO.  
**BELL LAKE UNIT NORTH 407H**  
LOCATED 2005 FT. FROM THE NORTH LINE  
AND 1073.3 FT. FROM THE WEST LINE OF  
SECTION 6, TOWNSHIP 23 SOUTH,  
RANGE 34 EAST, N.M.P.M.  
LEA COUNTY, STATE OF NEW MEXICO

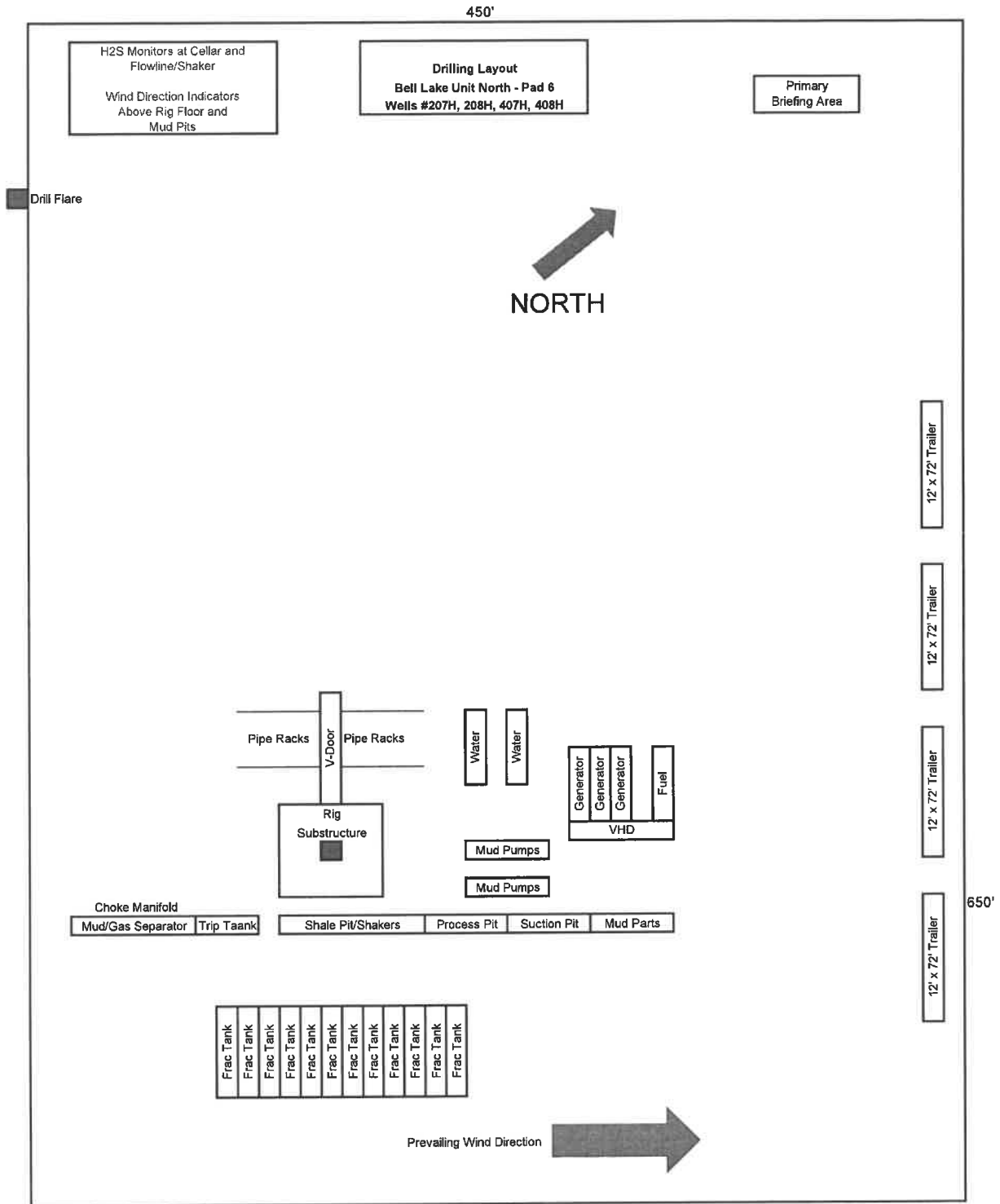
OCTOBER 16, 2019

SURVEY NO. 7640

MADISON SURVEYING, INC.

301 SOUTH CANAL  
(575) 234-3341

CARLSBAD, NEW MEXICO



SECTION 6, TOWNSHIP 23 SOUTH, RANGE 34 EAST, N.M.P.M.  
LEA COUNTY, STATE OF NEW MEXICO

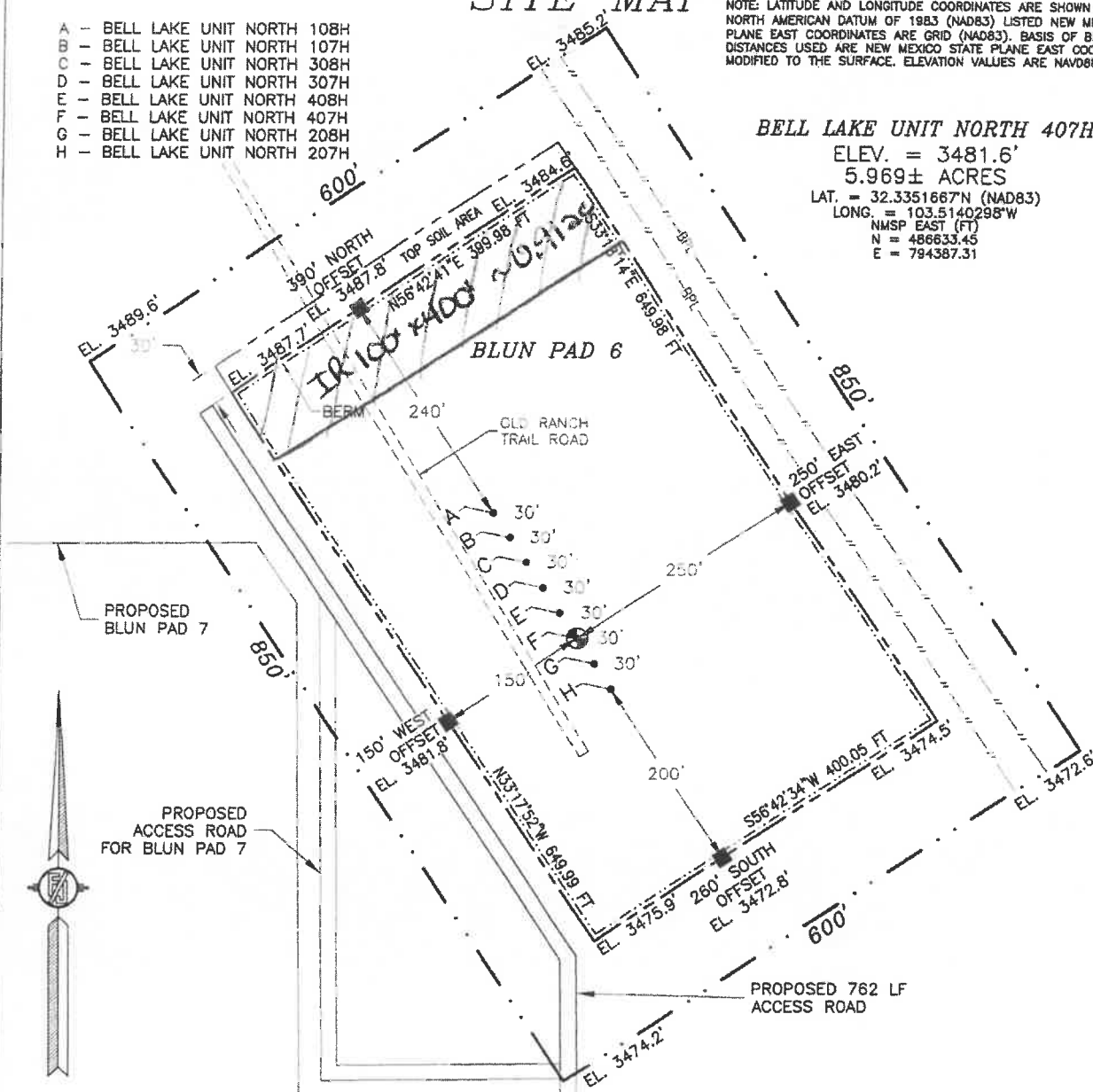
SITE MAP

- A - BELL LAKE UNIT NORTH 108H
- B - BELL LAKE UNIT NORTH 107H
- C - BELL LAKE UNIT NORTH 308H
- D - BELL LAKE UNIT NORTH 307H
- E - BELL LAKE UNIT NORTH 408H
- F - BELL LAKE UNIT NORTH 407H
- G - BELL LAKE UNIT NORTH 208H
- H - BELL LAKE UNIT NORTH 207H

NOTE: LATITUDE AND LONGITUDE COORDINATES ARE SHOWN USING THE NORTH AMERICAN DATUM OF 1983 (NAD83) LISTED NEW MEXICO STATE PLANE EAST COORDINATES ARE GRID (NAD83). BASIS OF BEARING AND DISTANCES USED ARE NEW MEXICO STATE PLANE EAST COORDINATES MODIFIED TO THE SURFACE. ELEVATION VALUES ARE NAVD88.

BELL LAKE UNIT NORTH 407H

ELEV. = 3481.6'  
5.969± ACRES  
LAT. = 32.3351667°N (NAD83)  
LONG. = 103.5140298°W  
NMSP EAST (FT)  
N = 486633.45  
E = 794387.31



015 75 150 300

SCALE 1" = 150'  
DIRECTIONS TO LOCATION

FROM THE INTERSECTION OF STATE HIGHWAY 128 AND CR. 21 (DELAWARE BASIN) GO NORTH ON CR. 21 FOR APPROX. 8.1 MILES TO 80° BEND EAST, CONTINUE EAST TO SECOND CALICHE LEASE ROAD (KAISER-FRANCIS SIGNS) GO NORTH ON CALICHE LEASE ROAD APPROX. 0.4 OF A MILE, GO WEST 0.8 OF A MILE TO BEGIN ROAD SURVEY, FOLLOW ROAD SURVEY NORTH 422', CONTINUE NORTH APPROX. 112' THEN NORTHWEST APPROX. 650' (TOTAL OF 782') TO THE NORTHWEST PAD CORNER FOR THIS LOCATION.

I, JUAN F. JARAMILLO, A NEW MEXICO REGISTERED PROFESSIONAL SURVEYOR, CERTIFY THAT I HAVE PERSONALLY AND INDEPENDENTLY FOR THIS SURVEY, THAT THIS MAP IS THE BEST OF MY KNOWLEDGE AND BELIEF, AND THAT I HAVE MET THE MINIMUM STANDARDS FOR SURVEYING.

MADRON SURVEYING, INC. 301 SOUTH CANAL (575) 234-3341

KAISER-FRANCIS OIL CO.  
BELL LAKE UNIT NORTH 407H  
LOCATED 2005 FT. FROM THE NORTH LINE  
AND 1073.3 FT. FROM THE WEST LINE OF  
SECTION 6, TOWNSHIP 23 SOUTH,  
RANGE 34 EAST, N.M.P.M.  
LEA COUNTY, STATE OF NEW MEXICO

OCTOBER 16, 2019

SURVEY NO. 7640

CARLSBAD, NEW MEXICO



U.S. Department of the Interior  
BUREAU OF LAND MANAGEMENT

## PWD Data Report

01/22/2021

**APD ID:** 10400053835

**Submission Date:** 02/03/2020

**Operator Name:** KAISER FRANCIS OIL COMPANY

**Well Name:** BELL LAKE UNIT NORTH

**Well Number:** 407H

**Well Type:** OIL WELL

**Well Work Type:** Drill

### Section 1 - General

**Would you like to address long-term produced water disposal?** NO

### Section 2 - Lined Pits

**Would you like to utilize Lined Pit PWD options?** N

**Produced Water Disposal (PWD) Location:**

**PWD surface owner:**

**PWD disturbance (acres):**

**Lined pit PWD on or off channel:**

**Lined pit PWD discharge volume (bbl/day):**

**Lined pit specifications:**

**Pit liner description:**

**Pit liner manufacturers information:**

**Precipitated solids disposal:**

**Describe precipitated solids disposal:**

**Precipitated solids disposal permit:**

**Lined pit precipitated solids disposal schedule:**

**Lined pit precipitated solids disposal schedule attachment:**

**Lined pit reclamation description:**

**Lined pit reclamation attachment:**

**Leak detection system description:**

**Leak detection system attachment:**

**Operator Name:** KAISER FRANCIS OIL COMPANY**Well Name:** BELL LAKE UNIT NORTH**Well Number:** 407H**Lined pit Monitor description:****Lined pit Monitor attachment:****Lined pit: do you have a reclamation bond for the pit?****Is the reclamation bond a rider under the BLM bond?****Lined pit bond number:****Lined pit bond amount:****Additional bond information attachment:**

### Section 3 - Unlined Pits

**Would you like to utilize Unlined Pit PWD options?** N**Produced Water Disposal (PWD) Location:****PWD disturbance (acres):****PWD surface owner:****Unlined pit PWD on or off channel:****Unlined pit PWD discharge volume (bbl/day):****Unlined pit specifications:****Precipitated solids disposal:****Describe precipitated solids disposal:****Precipitated solids disposal permit:****Unlined pit precipitated solids disposal schedule:****Unlined pit precipitated solids disposal schedule attachment:****Unlined pit reclamation description:****Unlined pit reclamation attachment:****Unlined pit Monitor description:****Unlined pit Monitor attachment:****Do you propose to put the produced water to beneficial use?****Beneficial use user confirmation:****Estimated depth of the shallowest aquifer (feet):****Does the produced water have an annual average Total Dissolved Solids (TDS) concentration equal to or less than that of the existing water to be protected?****TDS lab results:****Geologic and hydrologic evidence:****State authorization:****Unlined Produced Water Pit Estimated percolation:****Unlined pit: do you have a reclamation bond for the pit?**

**Operator Name:** KAISER FRANCIS OIL COMPANY**Well Name:** BELL LAKE UNIT NORTH**Well Number:** 407H**Is the reclamation bond a rider under the BLM bond?****Unlined pit bond number:****Unlined pit bond amount:****Additional bond information attachment:**

#### Section 4 - Injection

**Would you like to utilize Injection PWD options?** N**Produced Water Disposal (PWD) Location:****PWD surface owner:****PWD disturbance (acres):****Injection PWD discharge volume (bbl/day):****Injection well mineral owner:****Injection well type:****Injection well number:****Injection well name:****Assigned injection well API number?****Injection well API number:****Injection well new surface disturbance (acres):****Minerals protection information:****Mineral protection attachment:****Underground Injection Control (UIC) Permit?****UIC Permit attachment:**

#### Section 5 - Surface Discharge

**Would you like to utilize Surface Discharge PWD options?** N**Produced Water Disposal (PWD) Location:****PWD surface owner:****PWD disturbance (acres):****Surface discharge PWD discharge volume (bbl/day):****Surface Discharge NPDES Permit?****Surface Discharge NPDES Permit attachment:****Surface Discharge site facilities information:****Surface discharge site facilities map:**

#### Section 6 - Other

**Would you like to utilize Other PWD options?** N**Produced Water Disposal (PWD) Location:****PWD surface owner:****PWD disturbance (acres):****Other PWD discharge volume (bbl/day):**

**Operator Name:** KAISER FRANCIS OIL COMPANY

**Well Name:** BELL LAKE UNIT NORTH

**Well Number:** 407H

**Other PWD type description:**

**Other PWD type attachment:**

**Have other regulatory requirements been met?**

**Other regulatory requirements attachment:**





U.S. Department of the Interior  
BUREAU OF LAND MANAGEMENT

## Bond Info Data Report

01/22/2021

**APD ID:** 10400053835

**Submission Date:** 02/03/2020

Highlighted data  
reflects the most  
recent changes

**Operator Name:** KAISER FRANCIS OIL COMPANY

**Well Name:** BELL LAKE UNIT NORTH

**Well Number:** 407H

[Show Final Text](#)

**Well Type:** OIL WELL

**Well Work Type:** Drill

### Bond Information

**Federal/Indian APD:** FED

**BLM Bond number:** WYB000055

**BIA Bond number:**

**Do you have a reclamation bond?** NO

**Is the reclamation bond a rider under the BLM bond?**

**Is the reclamation bond BLM or Forest Service?**

**BLM reclamation bond number:**

**Forest Service reclamation bond number:**

**Forest Service reclamation bond attachment:**

**Reclamation bond number:**

**Reclamation bond amount:**

**Reclamation bond rider amount:**

**Additional reclamation bond information attachment:**

**District I**1625 N. French Dr., Hobbs, NM 88240  
Phone: (575) 393-6161 Fax: (575) 393-0720**District II**811 S. First St., Artesia, NM 88210  
Phone: (505) 748-1283 Fax: (505) 748-9720**District III**1000 Rio Brazos Road, Aztec, NM 87410  
Phone: (505) 334-6178 Fax: (505) 334-6170**District IV**1220 S. St. Francis Dr., Santa Fe, NM 87505  
Phone: (505) 476-3460 Fax: (505) 476-3462

State of New Mexico  
Energy, Minerals & Natural Resources Department  
**OIL CONSERVATION DIVISION**  
1220 South St. Francis Dr.  
Santa Fe, NM 87505

Form C-102

Revised August 1, 2011

Submit one copy to appropriate

District Office

☐ AMENDED REPORT**WELL LOCATION AND ACREAGE DEDICATION PLAT**

<sup>1</sup> API Number <b>30-025-30-025-48553</b>	<sup>2</sup> Pool Code <b>98265</b>	<sup>3</sup> Pool Name <b>Ojo Chiso; Wolfcamp, Southwest</b>
<sup>4</sup> Property Code <b>316707</b>	<sup>5</sup> Property Name <b>BELL LAKE UNIT NORTH</b>	<sup>6</sup> Well Number <b>407H</b>
<sup>7</sup> OGRID No. <b>12361</b>	<sup>8</sup> Operator Name <b>KAISER-FRANCIS OIL CO.</b>	<sup>9</sup> Elevation <b>3481.6</b>

**" Surface Location**

UL or lot no.	Section	Township	Range	Lot Idn	Feet from the	North/South line	Feet from the	East/West line	County
<b>5</b>	<b>6</b>	<b>23 S</b>	<b>34 E</b>		<b>2005</b>	<b>NORTH</b>	<b>1073.3</b>	<b>WEST</b>	<b>LEA</b>

**" Bottom Hole Location If Different From Surface**

UL or lot no.	Section	Township	Range	Lot Idn	Feet from the	North/South line	Feet from the	East/West line	County
<b>4</b>	<b>7</b>	<b>23 S</b>	<b>34 E</b>		<b>100</b>	<b>SOUTH</b>	<b>350</b>	<b>WEST</b>	<b>LEA</b>

<sup>12</sup> Dedicated Acres <b>480</b>	<sup>13</sup> Joint or Infill	<sup>14</sup> Consolidation Code	<sup>15</sup> Order No. <b>R-14602</b>
---	-------------------------------	----------------------------------	---

No allowable will be assigned to this completion until all interests have been consolidated or a non-standard unit has been approved by the division.

	<p><b>" OPERATOR CERTIFICATION</b></p> <p>I hereby certify that the information contained herein is true and complete to the best of my knowledge and belief, and that this organization either owns a working interest or unleased mineral interest in the land including the proposed bottom hole location or has a right to drill this well at this location pursuant to a contract with an owner of such a mineral or working interest, or to a voluntary pooling agreement or a compulsory pooling order heretofore entered by the division.</p> <p><i>Melanie Wilson</i> 01/29/2020 Signature Date</p> <p><b>Melanie Wilson</b> Printed Name</p> <p><b>mjp1692@gmail.com</b> E-mail Address</p> <p><b>"SURVEYOR CERTIFICATION</b></p> <p>I hereby certify that the well location shown on this plat was plotted from field notes of actual surveys made by me or under my supervision, and that the same is true and correct to the best of my belief.</p> <p>OCTOBER 16, 2019 Date of Survey</p> <p><i>[Signature]</i> Signature and Seal of Professional Surveyor</p> <p>Certificate Number F.I.L.M. 12797 SURVEY NO. 7640</p>
--	--

District I  
1625 N. French Dr., Hobbs, NM 88240  
District II  
811 S. First St., Artesia, NM 88210  
District III  
1000 Rio Brazos Road, Aztec, NM 87410  
District IV  
1220 S. St. Francis Dr., Santa Fe, NM 87505

State of New Mexico  
Energy, Minerals and Natural Resources Department  
Oil Conservation Division  
1220 South St. Francis Dr.  
Santa Fe, NM 87505

Submit Original  
to Appropriate  
District Office

### GAS CAPTURE PLAN

Date: 01/10/2020

☒ Original

Operator & OGRID No.: Kaiser-Francis Oil Company, 12361

☐ Amended - Reason for Amendment: \_\_\_\_\_

This Gas Capture Plan outlines actions to be taken by the Operator to reduce well/production facility flaring/venting for new completion (new drill, recomple to new zone, re-frac) activity.

*Note: Form C-129 must be submitted and approved prior to exceeding 60 days allowed by Rule (Subsection A of 19.15.18.12 NMAC).*

#### Well(s)/Production Facility – Name of facility

The well(s) that will be located at the production facility are shown in the table below.

Well Name	API	Well Location (ULSTR)	Footages	Expected MCF/D	Flared or Vented	Comments
Bell Lake Unit North 207H		6-23S-34E	2137' FNL/1105' FWL	2000	0	
Bell Lake Unit North 208H		6-23S-34E	2111' FNL/1089' FWL	2000	0	
Bell Lake Unit North 307H		6-23S-34E		2000	0	
Bell Lake Unit North 308H		6-23S-34E		2000	0	
Bell Lake Unit North 407H		6-23S-34E	2005' FNL/1073' FWL	2000	0	
Bell Lake Unit North 408H	<b>30-025-48553</b>	6-23S-34E	2086' FNL/1057' FWL	2000	0	

#### Gathering System and Pipeline Notification

Well(s) will be connected to a production facility after flowback operations are complete, if gas transporter system is in place. The gas produced from production facility is dedicated to Targa and will be connected to Targa low/high pressure gathering system located in Lea County, New Mexico. It will require 11,000' of pipeline to connect the facility to low/high pressure gathering system. Kaiser-Francis Oil Company provides (periodically) to Targa a drilling, completion and estimated first production date for wells that are scheduled to be drilled in the foreseeable future. In addition, Kaiser-Francis Oil Company and Targa have periodic conference calls to discuss changes to drilling and completion schedules. Gas from these wells will be processed at Targa Processing Plant located in Sec. 36, Twn. 19S, Rng. 36E, Lea County, New Mexico. The actual flow of the gas will be based on compression operating parameters and gathering system pressures.

#### Flowback Strategy

After the fracture treatment/completion operations, well(s) will be produced to temporary production tanks and gas will be flared or vented. During flowback, the fluids and sand content will be monitored. When the produced fluids contain minimal sand, the wells will be turned to production facilities. Gas sales should start as soon as the wells start flowing through the production facilities, unless there are operational issues on Targa system at that time. Based on current information, it is Kaiser-Francis Oil Company's belief the system can take this gas upon completion of the well(s).

Safety requirements during cleanout operations from the use of underbalanced air cleanout systems may necessitate that sand and non-pipeline quality gas be vented and/or flared rather than sold on a temporary basis.

#### Alternatives to Reduce Flaring

Below are alternatives considered from a conceptual standpoint to reduce the amount of gas flared.

**Operator Name:** KAISER FRANCIS OIL COMPANY**Well Name:** BELL LAKE UNIT NORTH**Well Number:** 407H**Pressure Rating (PSI):** 5M**Rating Depth:** 13000

**Equipment:** A 5M system will be installed according to Onshore Order #2 consisting of an Annular Preventer, BOP with two rams, a blind ram and safety valves and appropriate handles located on the rig floor. BOP will be equipped with 2 side outlets (choke side shall be a minimum 3 line, and kill side will be a minimum 2 line). Kill line will be installed with (2) valves and a check valve (2 min) of proper pressure rating for the system. Remote kill line (2 min) will be installed and ran to the outer edge of the substructure and be unobstructed. A manual and hydraulic valve (3 min) will be installed on the choke line, 3 chokes will be used with one being remotely controlled. Fill up line will be installed above the uppermost preventer. Pressure gauge of proper pressure rating will be installed on choke manifold. Upper and lower kelly cocks will be utilized with handles readily available in plain sight. A float sub will be available at all times. All connections subject to well pressure will be flanged, welded, or clamped.

**Requesting Variance?** YES**Variance request:** Flex Hose Variance MultiBowl Wellhead 5M Annular Variance

**Testing Procedure:** BOP/BOPE will be tested by an independent service company to 250 psi low and the high pressure indicated above per Onshore Order 2 requirements. The System may be upgraded to a higher pressure but still tested to the working pressure listed in the table above. If the system is upgraded all of the components installed will be functional and tested.

**Choke Diagram Attachment:**

BLUN\_407H\_Choke\_Manifold\_20200203103704.pdf

**BOP Diagram Attachment:**

BLUN\_407H\_Flex\_Hose\_20200129110333.pdf

BLUN\_407H\_Annular\_BOP\_Variance\_Rqst\_20200129110334.pdf

BLUN\_407H\_Wellhead\_20200129110334.pdf

BLUN\_Well\_Control\_Plan\_20200129165724.pdf

BLUN\_407H\_BOP\_20200203135502.pdf

### Section 3 - Casing

Casing ID	String Type	Hole Size	Csg Size	Condition	Standard	Tapered String	Top Set MD	Bottom Set MD	Top Set TVD	Bottom Set TVD	Top Set MSL	Bottom Set MSL	Calculated casing length MD	Grade	Weight	Joint Type	Collapse SF	Burst SF	Joint SF Type	Joint SF	Body SF Type	Body SF
1	SURFACE	14.75	10.75	NEW	API	N	0	1250	0	1250	3481	2231	1250	J-55	40.5	ST&C	2.7	5.4	DRY	8.3	DRY	12.4
2	INTERMEDIATE	9.875	7.625	NEW	API	N	0	11065	0	11027		-7546	11065	HCP-110	29.7	LT&C	1.3	1.8	DRY	2.3	DRY	2.9
3	PRODUCTION	6.75	5.5	NEW	API	N	0	19800	0	11700		-8219	19800	P-110	20	OTHER - USS Eagle SFH	1.8	2	DRY	2.7	DRY	3.1

**Operator Name:** KAISER FRANCIS OIL COMPANY**Well Name:** BELL LAKE UNIT NORTH**Well Number:** 407H**Casing Attachments**

---

**Casing ID:** 1      **String Type:** SURFACE**Inspection Document:****Spec Document:****Tapered String Spec:****Casing Design Assumptions and Worksheet(s):**BLUN\_407H\_Csg\_Assumptions\_20200129111556.pdf

---

**Casing ID:** 2      **String Type:** INTERMEDIATE**Inspection Document:****Spec Document:****Tapered String Spec:****Casing Design Assumptions and Worksheet(s):**BLUN\_407H\_Csg\_Assumptions\_20200129110549.pdf

---

**Casing ID:** 3      **String Type:** PRODUCTION**Inspection Document:****Spec Document:****Tapered String Spec:****Casing Design Assumptions and Worksheet(s):**BLUN\_407H\_Prod\_Csg\_Specs\_20200129111531.pdf

---

**Section 4 - Cement**



**Operator Name:** KAISER FRANCIS OIL COMPANY**Well Name:** BELL LAKE UNIT NORTH**Well Number:** 407H

String Type	Lead/Tail	Stage Tool Depth	Top MD	Bottom MD	Quantity(sx)	Yield	Density	Cu Ft	Excess%	Cement type	Additives
SURFACE	Lead		0	1250	602	1.7	13.5	1041	50	ExtendaCem	Poly E Flake

INTERMEDIATE	Lead		0	1106 5	837	2.7	11	2286	25	NeoCem	Extender
INTERMEDIATE	Tail		0	1106 5	571	1.2	15.6	684	25	Halcem	none
PRODUCTION	Lead		9000	1980 0	848	1.2	14.5	1037	15	Versacem	Halad

### Section 5 - Circulating Medium

**Mud System Type:** Closed**Will an air or gas system be Used?** NO**Description of the equipment for the circulating system in accordance with Onshore Order #2:****Diagram of the equipment for the circulating system in accordance with Onshore Order #2:**

**Describe what will be on location to control well or mitigate other conditions:** Sufficient mud materials to maintain mud properties and meet minimum lost circulation and weight increase requirements will be kept on location at all time.

**Describe the mud monitoring system utilized:** PVT/Pason/Visual Monitoring

### Circulating Medium Table

Top Depth	Bottom Depth	Mud Type	Min Weight (lbs/gal)	Max Weight (lbs/gal)	Density (lbs/cu ft)	Gel Strength (lbs/100 sqft)	PH	Viscosity (CP)	Salinity (ppm)	Filtration (cc)	Additional Characteristics
1102 7	1170 0	OIL-BASED MUD	10	12							
1250	1102 7	OTHER : Brine	8.7	9							
0	1250	OTHER : Fresh Water	8.4	9							

Date: 3/11/2021

To: NMOCD

From: Charlotte Van Valkenburg

Re: Closed-Loop System

It is the intention of Kaiser-Francis Oil Company to use a closed-loop system during drilling of the following well:

Bell Lake Unit North #407H  
Sec. 6-23S-34E  
Lea Co., NM

A handwritten signature in blue ink, appearing to read "C. Van Valkenburg", is written over the printed name.

Charlotte Van Valkenburg  
Mgr., Regulatory Compliance  
Kaiser-Francis Oil Company



**District I**

1625 N. French Dr., Hobbs, NM 88240  
Phone:(575) 393-6161 Fax:(575) 393-0720

**District II**

811 S. First St., Artesia, NM 88210  
Phone:(575) 748-1283 Fax:(575) 748-9720

**District III**

1000 Rio Brazos Rd., Aztec, NM 87410  
Phone:(505) 334-6178 Fax:(505) 334-6170

**District IV**

1220 S. St Francis Dr., Santa Fe, NM 87505  
Phone:(505) 476-3470 Fax:(505) 476-3462

**State of New Mexico**  
**Energy, Minerals and Natural Resources**  
**Oil Conservation Division**  
**1220 S. St Francis Dr.**  
**Santa Fe, NM 87505**

CONDITIONS

Action 20600

**CONDITIONS OF APPROVAL**

Operator:	KAISER-FRANCIS OIL CO	P.O. Box 21468	Tulsa, OK74121	OGRID:	12361	Action Number:	20600	Action Type:	FORM 3160-3
-----------	-----------------------	----------------	----------------	--------	-------	----------------	-------	--------------	-------------

OCD Reviewer	Condition
pkautz	Will require a File As Drilled C-102 and a Directional Survey with the C-104
pkautz	Once the well is spud, to prevent ground water contamination through whole or partial conduits from the surface, the operator shall drill without interruption through the fresh water zone or zones and shall immediately set in cement the water protection string