

District I
1625 N. French Dr., Hobbs, NM 88240
District II
811 S. First St., Artesia, NM 88210
District III
1000 Rio Brazos Road, Aztec, NM 87410
District IV
1220 S. St. Francis Dr., Santa Fe, NM 87505

State of New Mexico
Energy Minerals and Natural Resources
Department
Oil Conservation Division
1220 South St. Francis Dr.
Santa Fe, NM 87505

Form C-144
Revised April 3, 2017

For temporary pits, below-grade tanks, and multi-well fluid management pits, submit to the appropriate NMOCD District Office.
For permanent pits submit to the Santa Fe Environmental Bureau office and provide a copy to the appropriate NMOCD District Office.

Pit, Below-Grade Tank, or
Proposed Alternative Method Permit or Closure Plan Application

Type of action: ☒ Below grade tank registration
☐ Permit of a pit or proposed alternative method
☐ Closure of a pit, below-grade tank, or proposed alternative method
☐ Modification to an existing permit/or registration
☐ Closure plan only submitted for an existing permitted or non-permitted pit, below-grade tank, or proposed alternative method

BGT 1

Instructions: Please submit one application (Form C-144) per individual pit, below-grade tank or alternative request

Please be advised that approval of this request does not relieve the operator of liability should operations result in pollution of surface water, ground water or the environment. Nor does approval relieve the operator of its responsibility to comply with any other applicable governmental authority's rules, regulations, or ordinances.

1.
Operator: Cross Timbers Energy, LLC OGRID #: 298299
Address: 400 West 7TH Street Fort Worth, TX 76102
Facility or well name: State Gas Com CA #001
API Number: 30-045-25878 OCD Permit Number: _____
U/L or Qtr/Qtr A Section 16 Township 29N Range 11W County: San Juan
Center of Proposed Design: Latitude 36.7306862 Longitude -107.991684 NAD83
Surface Owner: ☐ Federal ☒ State ☐ Private ☐ Tribal Trust or Indian Allotment

2.
☐ **Pit:** Subsection F, G or J of 19.15.17.11 NMAC
Temporary: ☐ Drilling ☐ Workover
☐ Permanent ☐ Emergency ☐ Cavitation ☐ P&A ☐ Multi-Well Fluid Management Low Chloride Drilling Fluid ☐ yes ☐ no
☐ Lined ☐ Unlined Liner type: Thickness _____ mil ☐ LLDPE ☐ HDPE ☐ PVC ☐ Other _____
☐ String-Reinforced
Liner Seams: ☐ Welded ☐ Factory ☐ Other _____ Volume: _____ bbl Dimensions: L _____ x W _____ x D _____

3.
☒ **Below-grade tank:** Subsection I of 19.15.17.11 NMAC
Volume: 95 bbl Type of fluid: Produced Water
Tank Construction material: Steel
☒ Secondary containment with leak detection ☐ Visible sidewalls, liner, 6-inch lift and automatic overflow shut-off
☒ Visible sidewalls and liner ☐ Visible sidewalls only ☐ Other _____
Liner type: Thickness _____ mil ☐ HDPE ☐ PVC ☐ Other _____

4.
☐ **Alternative Method:**
Submittal of an exception request is required. Exceptions must be submitted to the Santa Fe Environmental Bureau office for consideration of approval.

5.
Fencing: Subsection D of 19.15.17.11 NMAC (Applies to permanent pits, temporary pits, and below-grade tanks)
☐ Chain link, six feet in height, two strands of barbed wire at top (Required if located within 1000 feet of a permanent residence, school, hospital, institution or church)
☐ Four foot height, four strands of barbed wire evenly spaced between one and four feet
☒ Alternate. Please specify Per BLM Specifications _____

Page 2 of 25
Received by OCD: 5/20/2021 10:32:48 AM
Released to Imaging: 5/21/2021 4:59:33 PM

6.

Netting: Subsection E of 19.15.17.11 NMAC (*Applies to permanent pits and permanent open top tanks*)

- ☒ Screen ☐ Netting ☐ Other _____
☐ Monthly inspections (If netting or screening is not physically feasible)

7.

Signs: Subsection C of 19.15.17.11 NMAC

- ☐ 12"x 24", 2" lettering, providing Operator's name, site location, and emergency telephone numbers
☒ Signed in compliance with 19.15.16.8 NMAC

8.

Variances and Exceptions:

Justifications and/or demonstrations of equivalency are required. Please refer to 19.15.17 NMAC for guidance.

Please check a box if one or more of the following is requested, if not leave blank:

- ☐ Variance(s): Requests must be submitted to the appropriate division district for consideration of approval.
☐ Exception(s): Requests must be submitted to the Santa Fe Environmental Bureau office for consideration of approval.

9.

Siting Criteria (regarding permitting): 19.15.17.10 NMAC

Instructions: The applicant must demonstrate compliance for each siting criteria below in the application. Recommendations of acceptable source material are provided below. Siting criteria does not apply to drying pads or above-grade tanks.

General siting

Ground water is less than 25 feet below the bottom of a low chloride temporary pit or below-grade tank.

- ☐ NM Office of the State Engineer - iWATERS database search; ☐ USGS; ☐ Data obtained from nearby wells

☐ Yes ☒ No
☐ NA

Ground water is less than 50 feet below the bottom of a Temporary pit, permanent pit, or Multi-Well Fluid Management pit.

NM Office of the State Engineer - iWATERS database search; USGS; Data obtained from nearby wells

☐ Yes ☐ No
☐ NA

Within incorporated municipal boundaries or within a defined municipal fresh water well field covered under a municipal ordinance adopted pursuant to NMSA 1978, Section 3-27-3, as amended. (**Does not apply to below grade tanks**)

- Written confirmation or verification from the municipality; Written approval obtained from the municipality

☐ Yes ☐ No

Within the area overlying a subsurface mine. (**Does not apply to below grade tanks**)

- Written confirmation or verification or map from the NM EMNRD-Mining and Mineral Division

☐ Yes ☐ No

Within an unstable area. (**Does not apply to below grade tanks**)

- Engineering measures incorporated into the design; NM Bureau of Geology & Mineral Resources; USGS; NM Geological Society; Topographic map

☐ Yes ☐ No

Within a 100-year floodplain. (**Does not apply to below grade tanks**)

- FEMA map

☐ Yes ☐ No

Below Grade Tanks

Within 100 feet of a continuously flowing watercourse, significant watercourse, lakebed, sinkhole, wetland or playa lake (measured from the ordinary high-water mark).

- Topographic map; Visual inspection (certification) of the proposed site

☐ Yes ☒ No

Within 200 horizontal feet of a spring or a fresh water well used for public or livestock consumption.

- NM Office of the State Engineer - iWATERS database search; Visual inspection (certification) of the proposed site

☐ Yes ☒ No

Temporary Pit using Low Chloride Drilling Fluid (maximum chloride content 15,000 mg/liter)

Within 100 feet of a continuously flowing watercourse, or any other significant watercourse or within 200 feet of any lakebed, sinkhole, or playa lake (measured from the ordinary high-water mark). (Applies to low chloride temporary pits.)

- Topographic map; Visual inspection (certification) of the proposed site

☐ Yes ☐ No

Within 300 feet from a occupied permanent residence, school, hospital, institution, or church in existence at the time of initial application.

- Visual inspection (certification) of the proposed site; Aerial photo; Satellite image

☐ Yes ☐ No

Within 200 horizontal feet of a spring or a private, domestic fresh water well used by less than five households for domestic or stock watering purposes, or 300 feet of any other fresh water well or spring, in existence at the time of the initial application.

NM Office of the State Engineer - iWATERS database search; Visual inspection (certification) of the proposed site

☐ Yes ☐ No

Page 3 of 25
Received by OCD: 5/20/2021 10:32:48 AM
Released to Imaging: 5/21/2021 4:59:33 PM

Within 100 feet of a wetland. - US Fish and Wildlife Wetland Identification map; Topographic map; Visual inspection (certification) of the proposed site	<input type="checkbox"/> Yes <input type="checkbox"/> No
<u>Temporary Pit Non-low chloride drilling fluid</u>	
Within 300 feet of a continuously flowing watercourse, or any other significant watercourse, or within 200 feet of any lakebed, sinkhole, or playa lake (measured from the ordinary high-water mark). - Topographic map; Visual inspection (certification) of the proposed site	<input type="checkbox"/> Yes <input type="checkbox"/> No
Within 300 feet from a permanent residence, school, hospital, institution, or church in existence at the time of initial application. - Visual inspection (certification) of the proposed site; Aerial photo; Satellite image	<input type="checkbox"/> Yes <input type="checkbox"/> No
Within 500 horizontal feet of a spring or a private, domestic fresh water well used by less than five households for domestic or stock watering purposes, or 1000 feet of any other fresh water well or spring, in the existence at the time of the initial application. - NM Office of the State Engineer - iWATERS database search; Visual inspection (certification) of the proposed site	<input type="checkbox"/> Yes <input type="checkbox"/> No
Within 300 feet of a wetland. - US Fish and Wildlife Wetland Identification map; Topographic map; Visual inspection (certification) of the proposed site	<input type="checkbox"/> Yes <input type="checkbox"/> No
<u>Permanent Pit or Multi-Well Fluid Management Pit</u>	
Within 300 feet of a continuously flowing watercourse, or 200 feet of any other significant watercourse, or lakebed, sinkhole, or playa lake (measured from the ordinary high-water mark). - Topographic map; Visual inspection (certification) of the proposed site	<input type="checkbox"/> Yes <input type="checkbox"/> No
Within 1000 feet from a permanent residence, school, hospital, institution, or church in existence at the time of initial application. - Visual inspection (certification) of the proposed site; Aerial photo; Satellite image	<input type="checkbox"/> Yes <input type="checkbox"/> No
Within 500 horizontal feet of a spring or a fresh water well used for domestic or stock watering purposes, in existence at the time of initial application. - NM Office of the State Engineer - iWATERS database search; Visual inspection (certification) of the proposed site	<input type="checkbox"/> Yes <input type="checkbox"/> No
Within 500 feet of a wetland. - US Fish and Wildlife Wetland Identification map; Topographic map; Visual inspection (certification) of the proposed site	<input type="checkbox"/> Yes <input type="checkbox"/> No

10.
Temporary Pits, Emergency Pits, and Below-grade Tanks Permit Application Attachment Checklist: Subsection B of 19.15.17.9 NMAC
Instructions: Each of the following items must be attached to the application. Please indicate, by a check mark in the box, that the documents are attached.

☒ Hydrogeologic Report (Below-grade Tanks) - based upon the requirements of Paragraph (4) of Subsection B of 19.15.17.9 NMAC
☒ Hydrogeologic Data (Temporary and Emergency Pits) - based upon the requirements of Paragraph (2) of Subsection B of 19.15.17.9 NMAC
☒ Siting Criteria Compliance Demonstrations - based upon the appropriate requirements of 19.15.17.10 NMAC
☒ Design Plan - based upon the appropriate requirements of 19.15.17.11 NMAC
☒ Operating and Maintenance Plan - based upon the appropriate requirements of 19.15.17.12 NMAC
☒ Closure Plan (Please complete Boxes 14 through 18, if applicable) - based upon the appropriate requirements of Subsection C of 19.15.17.9 NMAC and 19.15.17.13 NMAC

☐ Previously Approved Design (attach copy of design) API Number: _____ or Permit Number: _____

11.
Multi-Well Fluid Management Pit Checklist: Subsection B of 19.15.17.9 NMAC
Instructions: Each of the following items must be attached to the application. Please indicate, by a check mark in the box, that the documents are attached.

☐ Design Plan - based upon the appropriate requirements of 19.15.17.11 NMAC
☐ Operating and Maintenance Plan - based upon the appropriate requirements of 19.15.17.12 NMAC
☐ A List of wells with approved application for permit to drill associated with the pit.
☐ Closure Plan (Please complete Boxes 14 through 18, if applicable) - based upon the appropriate requirements of Subsection C of 19.15.17.9 NMAC and 19.15.17.13 NMAC
☐ Hydrogeologic Data - based upon the requirements of Paragraph (4) of Subsection B of 19.15.17.9 NMAC
☐ Siting Criteria Compliance Demonstrations - based upon the appropriate requirements of 19.15.17.10 NMAC

☐ Previously Approved Design (attach copy of design) API Number: _____ or Permit Number: _____

12.

Permanent Pits Permit Application Checklist: Subsection B of 19.15.17.9 NMAC

Instructions: Each of the following items must be attached to the application. Please indicate, by a check mark in the box, that the documents are attached.

- ☐ Hydrogeologic Report - based upon the requirements of Paragraph (1) of Subsection B of 19.15.17.9 NMAC
- ☐ Siting Criteria Compliance Demonstrations - based upon the appropriate requirements of 19.15.17.10 NMAC
- ☐ Climatological Factors Assessment
- ☐ Certified Engineering Design Plans - based upon the appropriate requirements of 19.15.17.11 NMAC
- ☐ Dike Protection and Structural Integrity Design - based upon the appropriate requirements of 19.15.17.11 NMAC
- ☐ Leak Detection Design - based upon the appropriate requirements of 19.15.17.11 NMAC
- ☐ Liner Specifications and Compatibility Assessment - based upon the appropriate requirements of 19.15.17.11 NMAC
- ☐ Quality Control/Quality Assurance Construction and Installation Plan
- ☐ Operating and Maintenance Plan - based upon the appropriate requirements of 19.15.17.12 NMAC
- ☐ Freeboard and Overtopping Prevention Plan - based upon the appropriate requirements of 19.15.17.11 NMAC
- ☐ Nuisance or Hazardous Odors, including H₂S, Prevention Plan
- ☐ Emergency Response Plan
- ☐ Oil Field Waste Stream Characterization
- ☐ Monitoring and Inspection Plan
- ☐ Erosion Control Plan
- ☐ Closure Plan - based upon the appropriate requirements of Subsection C of 19.15.17.9 NMAC and 19.15.17.13 NMAC

13.

Proposed Closure: 19.15.17.13 NMAC

Instructions: Please complete the applicable boxes, Boxes 14 through 18, in regards to the proposed closure plan.

- Type: ☐ Drilling ☐ Workover ☐ Emergency ☐ Cavitation ☐ P&A ☐ Permanent Pit ☒ Below-grade Tank ☐ Multi-well Fluid Management Pit
- ☐ Alternative
- Proposed Closure Method: ☒ Waste Excavation and Removal
- ☐ Waste Removal (Closed-loop systems only)
- ☐ On-site Closure Method (Only for temporary pits and closed-loop systems)
- ☐ In-place Burial ☐ On-site Trench Burial
- ☐ Alternative Closure Method

14.

Waste Excavation and Removal Closure Plan Checklist: (19.15.17.13 NMAC) **Instructions:** Each of the following items must be attached to the closure plan. Please indicate, by a check mark in the box, that the documents are attached.

- ☒ Protocols and Procedures - based upon the appropriate requirements of 19.15.17.13 NMAC
- ☒ Confirmation Sampling Plan (if applicable) - based upon the appropriate requirements of Subsection C of 19.15.17.13 NMAC
- ☒ Disposal Facility Name and Permit Number (for liquids, drilling fluids and drill cuttings)
- ☒ Soil Backfill and Cover Design Specifications - based upon the appropriate requirements of Subsection H of 19.15.17.13 NMAC
- ☒ Re-vegetation Plan - based upon the appropriate requirements of Subsection H of 19.15.17.13 NMAC
- ☒ Site Reclamation Plan - based upon the appropriate requirements of Subsection H of 19.15.17.13 NMAC

15.

Siting Criteria (regarding on-site closure methods only): 19.15.17.10 NMAC

Instructions: Each siting criteria requires a demonstration of compliance in the closure plan. Recommendations of acceptable source material are provided below. Requests regarding changes to certain siting criteria require justifications and/or demonstrations of equivalency. Please refer to 19.15.17.10 NMAC for guidance.

Ground water is less than 25 feet below the bottom of the buried waste. - NM Office of the State Engineer - iWATERS database search; USGS; Data obtained from nearby wells	<input type="checkbox"/> Yes <input type="checkbox"/> No <input type="checkbox"/> NA
Ground water is between 25-50 feet below the bottom of the buried waste - NM Office of the State Engineer - iWATERS database search; USGS; Data obtained from nearby wells	<input type="checkbox"/> Yes <input type="checkbox"/> No <input type="checkbox"/> NA
Ground water is more than 100 feet below the bottom of the buried waste. - NM Office of the State Engineer - iWATERS database search; USGS; Data obtained from nearby wells	<input type="checkbox"/> Yes <input type="checkbox"/> No <input type="checkbox"/> NA
Within 100 feet of a continuously flowing watercourse, or 200 feet of any other significant watercourse, lakebed, sinkhole, or playa lake (measured from the ordinary high-water mark). - Topographic map; Visual inspection (certification) of the proposed site	<input type="checkbox"/> Yes <input type="checkbox"/> No
Within 300 feet from a permanent residence, school, hospital, institution, or church in existence at the time of initial application. - Visual inspection (certification) of the proposed site; Aerial photo; Satellite image	<input type="checkbox"/> Yes <input type="checkbox"/> No
Within 300 horizontal feet of a private, domestic fresh water well or spring used for domestic or stock watering purposes, in existence at the time of initial application. - NM Office of the State Engineer - iWATERS database; Visual inspection (certification) of the proposed site	<input type="checkbox"/> Yes <input type="checkbox"/> No
Written confirmation or verification from the municipality; Written approval obtained from the municipality	<input type="checkbox"/> Yes <input type="checkbox"/> No
Within 300 feet of a wetland. US Fish and Wildlife Wetland Identification map; Topographic map; Visual inspection (certification) of the proposed site	<input type="checkbox"/> Yes <input type="checkbox"/> No
Within incorporated municipal boundaries or within a defined municipal fresh water well field covered under a municipal ordinance	<input type="checkbox"/> Yes <input type="checkbox"/> No

Page 5 of 25
Received by OCD: 5/20/2021 10:32:48 AM
Released to Imaging: 5/21/2021 4:59:33 PM

adopted pursuant to NMSA 1978, Section 3-27-3, as amended.

- Written confirmation or verification from the municipality; Written approval obtained from the municipality

☐ Yes ☐ No

Within the area overlying a subsurface mine.

- Written confirmation or verification or map from the NM EMNRD-Mining and Mineral Division

☐ Yes ☐ No

Within an unstable area.

- Engineering measures incorporated into the design; NM Bureau of Geology & Mineral Resources; USGS; NM Geological Society; Topographic map

☐ Yes ☐ No

Within a 100-year floodplain.

- FEMA map

☐ Yes ☐ No

16.

On-Site Closure Plan Checklist: (19.15.17.13 NMAC) *Instructions: Each of the following items must be attached to the closure plan. Please indicate, by a check mark in the box, that the documents are attached.*

- ☐ Siting Criteria Compliance Demonstrations - based upon the appropriate requirements of 19.15.17.10 NMAC
- ☐ Proof of Surface Owner Notice - based upon the appropriate requirements of Subsection E of 19.15.17.13 NMAC
- ☐ Construction/Design Plan of Burial Trench (if applicable) based upon the appropriate requirements of Subsection K of 19.15.17.11 NMAC
- ☐ Construction/Design Plan of Temporary Pit (for in-place burial of a drying pad) - based upon the appropriate requirements of 19.15.17.11 NMAC
- ☐ Protocols and Procedures - based upon the appropriate requirements of 19.15.17.13 NMAC
- ☐ Confirmation Sampling Plan (if applicable) - based upon the appropriate requirements of 19.15.17.13 NMAC
- ☐ Waste Material Sampling Plan - based upon the appropriate requirements of 19.15.17.13 NMAC
- ☐ Disposal Facility Name and Permit Number (for liquids, drilling fluids and drill cuttings or in case on-site closure standards cannot be achieved)
- ☐ Soil Cover Design - based upon the appropriate requirements of Subsection H of 19.15.17.13 NMAC
- ☐ Re-vegetation Plan - based upon the appropriate requirements of Subsection H of 19.15.17.13 NMAC
- ☐ Site Reclamation Plan - based upon the appropriate requirements of Subsection H of 19.15.17.13 NMAC

17.

Operator Application Certification:

I hereby certify that the information submitted with this application is true, accurate and complete to the best of my knowledge and belief.

Name (Print): Vanessa Fields Title: Agent Regulatory Compliance Manager

Signature:  Date: 5/2/2021

e-mail address: vanessa@walsheng.net Telephone: 505-787-9100

18.

OCD Approval: ☒ Permit Application (including closure plan) ☐ Closure Plan (only) ☐ OCD Conditions (see attachment)

OCD Representative Signature: CR Whitehead Approval Date: May 21, 2021

Title: Environmental Specialist OCD Permit Number: BGT 1

19.

Closure Report (required within 60 days of closure completion): 19.15.17.13 NMAC

Instructions: Operators are required to obtain an approved closure plan prior to implementing any closure activities and submitting the closure report. The closure report is required to be submitted to the division within 60 days of the completion of the closure activities. Please do not complete this section of the form until an approved closure plan has been obtained and the closure activities have been completed.

☐ Closure Completion Date: _____

20.

Closure Method:

- ☐ Waste Excavation and Removal ☐ On-Site Closure Method ☐ Alternative Closure Method ☐ Waste Removal (Closed-loop systems only)
- ☐ If different from approved plan, please explain.

21.

Closure Report Attachment Checklist: *Instructions: Each of the following items must be attached to the closure report. Please indicate, by a check mark in the box, that the documents are attached.*

- ☐ Proof of Closure Notice (surface owner and division)
- ☐ Proof of Deed Notice (required for on-site closure for private land only)
- ☐ Plot Plan (for on-site closures and temporary pits)
- ☐ Confirmation Sampling Analytical Results (if applicable)
- ☐ Waste Material Sampling Analytical Results (required for on-site closure)
- ☐ Disposal Facility Name and Permit Number
- ☐ Soil Backfilling and Cover Installation
- ☐ Re-vegetation Application Rates and Seeding Technique
- ☐ Site Reclamation (Photo Documentation)

On-site Closure Location: Latitude _____ Longitude _____ NAD: ☐ 1927 ☐ 1983

22.

Operator Closure Certification:

I hereby certify that the information and attachments submitted with this closure report is true, accurate and complete to the best of my knowledge and belief. I also certify that the closure complies with all applicable closure requirements and conditions specified in the approved closure plan.

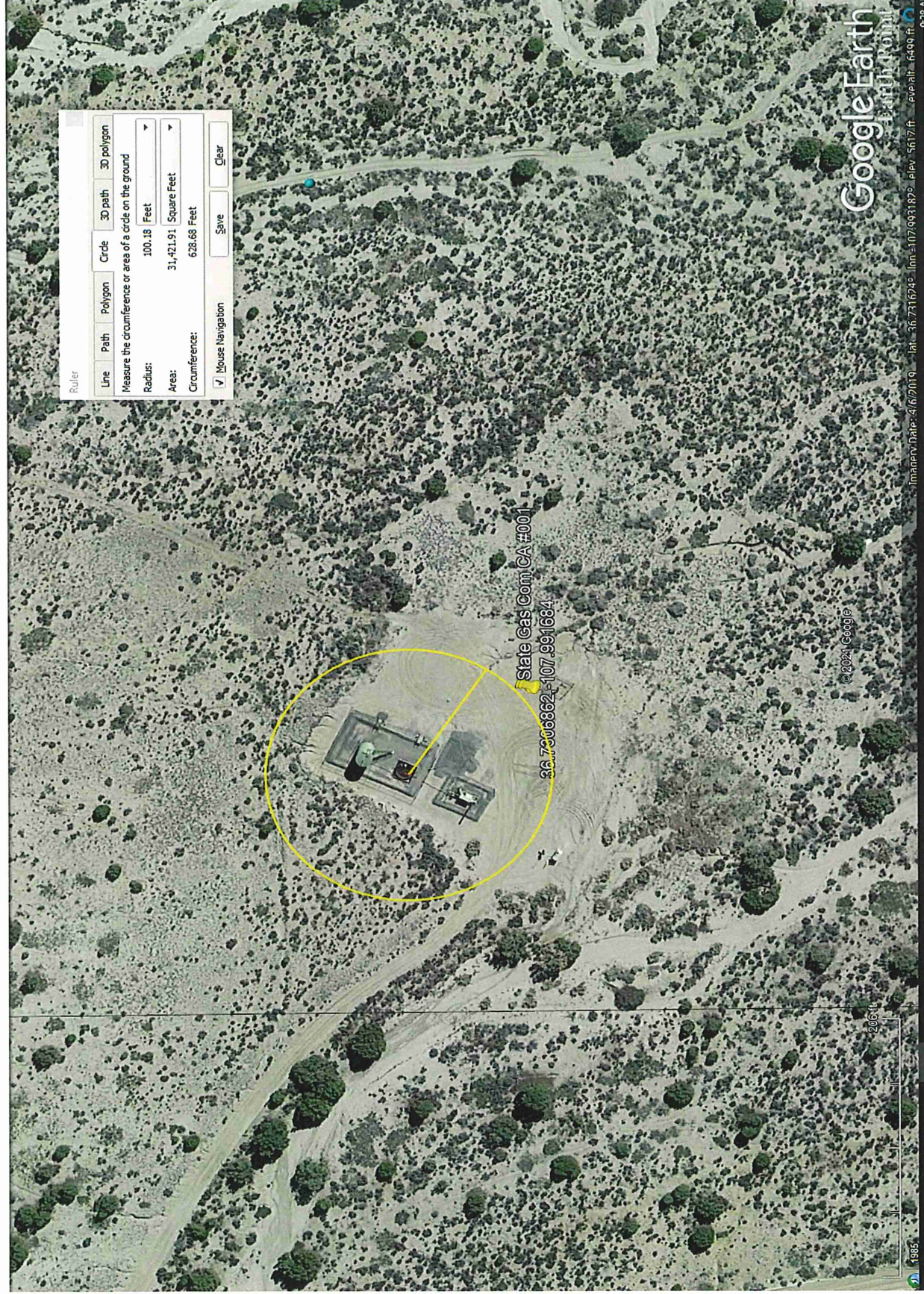
Name (Print): _____ Title: _____

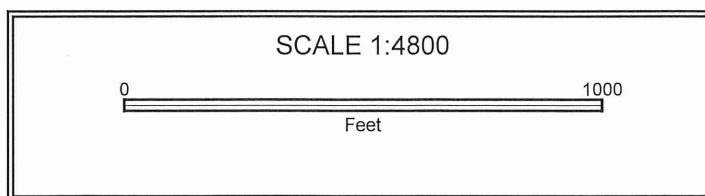
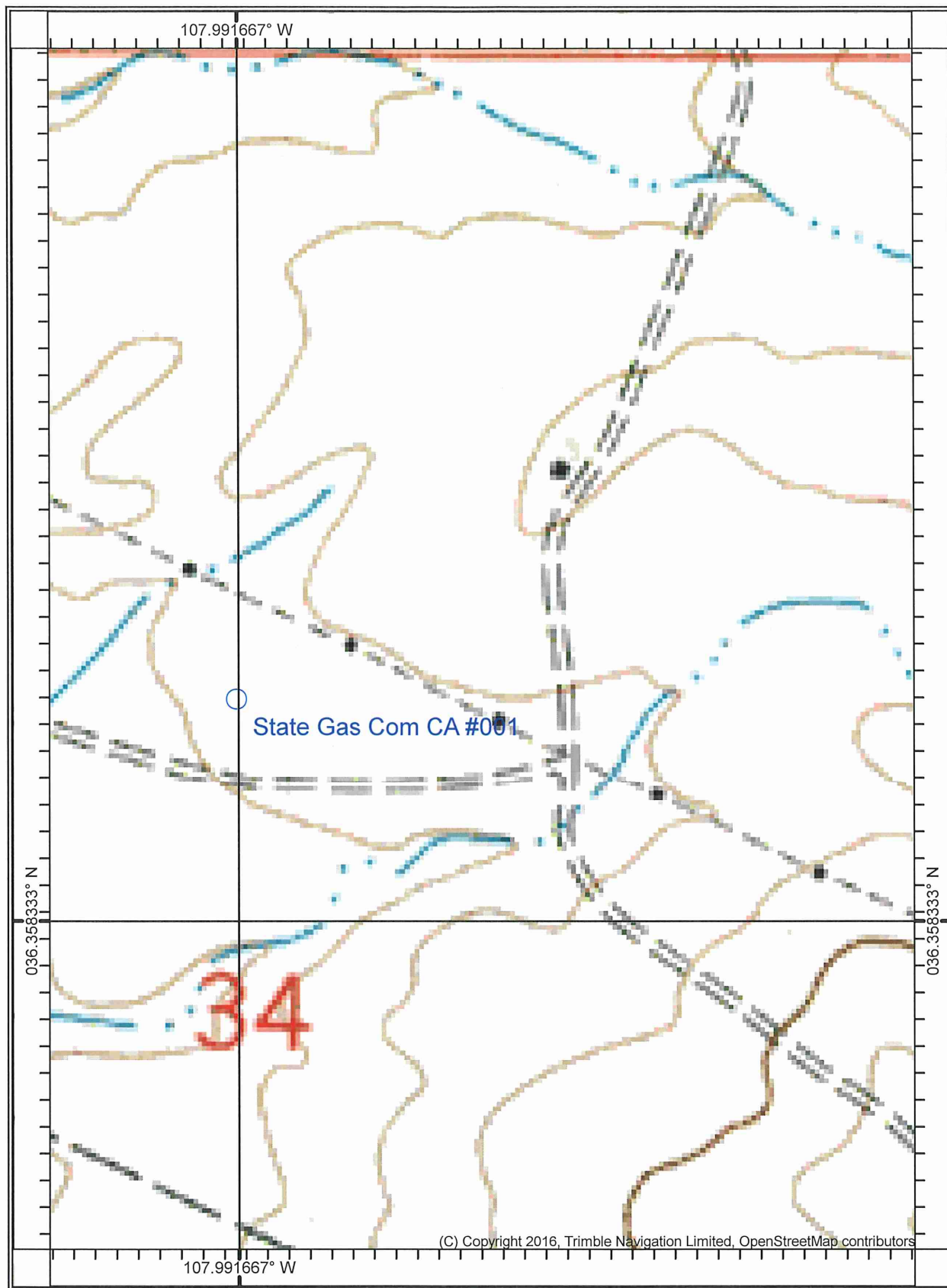
Signature: _____ Date: _____

e-mail address: _____ Telephone: _____

STATE GAS COM CA #001

Sitting Criteria





STATE GAS COM CA #001 API# 30-045-25878
DTW 119'





New Mexico Office of the State Engineer

Point of Diversion Summary

		(quarters are 1=NW 2=NE 3=SW 4=SE)				(quarters are smallest to largest)		(NAD83 UTM in meters)	
Well Tag	POD Number	Q64	Q16	Q4	Sec	Tws	Rng	X	Y
	SJ 02141	4	3	4	16	29N	11W	232618	4067931*

Driller License: 809 **Driller Company:** CHIVERS BRYCE J.

Driller Name: CHIVERS,BRYCE

Drill Start Date: 08/14/1987	Drill Finish Date: 08/18/1987	Plug Date:
Log File Date: 10/07/1988	PCW Rcv Date:	Source: Shallow
Pump Type:	Pipe Discharge Size:	Estimated Yield: 7 GPM
Casing Size: 7.00	Depth Well: 110 feet	Depth Water: 40 feet

Water Bearing Stratifications:	Top	Bottom	Description
	85	109	Shallow Alluvium/Basin Fill

Casing Perforations:	Top	Bottom
	102	109

*UTM location was derived from PLSS - see Help

The data is furnished by the NMOSE/ISC and is accepted by the recipient with the expressed understanding that the OSE/ISC make no warranties, expressed or implied, concerning the accuracy, completeness, reliability, usability, or suitability for any particular purpose of the data.

5/17/21 12:55 PM

POINT OF DIVERSION SUMMARY



New Mexico Office of the State Engineer

Water Column/Average Depth to Water

(A CLW##### in the
POD suffix indicates the
POD has been replaced
& no longer serves a
water right file.)

(R=POD has been
replaced,
O=orphaned,
C=the file is
closed)

(quarters are 1=NW 2=NE 3=SW 4=SE)
(quarters are smallest to largest)

(NAD83 UTM in meters)

(In feet)

POD Number	Code	POD Sub-basin	County	Q 64	Q 16	Q 4	Sec	Tws	Rng	X	Y	DepthWell	DepthWater	Water Column
SJ 02141		SJM2	SJ	4	3	4	16	29N	11W	232618	4067931*	110	40	70
SJ 03826 POD1		SJM2	SJ	3	4	2	16	29N	11W	232782	4068642	175		

Average Depth to Water: 40 feet

Minimum Depth: 40 feet

Maximum Depth: 40 feet

Record Count: 2

PLSS Search:

Section(s): 16

Township: 29N

Range: 11W

*UTM location was derived from PLSS - see Help

The data is furnished by the NMOSE/ISC and is accepted by the recipient with the expressed understanding that the OSE/ISC make no warranties, expressed or implied, concerning the accuracy, completeness, reliability, usability, or suitability for any particular purpose of the data.

5/17/21 2:43 PM

WATER COLUMN/ AVERAGE DEPTH TO
WATER

National Flood Hazard Layer FIRMette



107°59'49"W 36°44'5"N

Legend

SEE FIS REPORT FOR DETAILED LEGEND AND INDEX MAP FOR FIRM PANEL LAYOUT

Without Base Flood Elevation (BFE)
Zone A, V, A99

With BFE or Depth *Zone AE, AO, AH, VE, AR*

Regulatory Floodway

0.2% Annual Chance Flood Hazard, Area of 1% annual chance flood with average depth less than one foot or with drainage areas of less than one square mile (*Zone X*)

Future Conditions 1% Annual Chance Flood Hazard *Zone X*

Area with Reduced Flood Risk due to Levee. See Notes. *Zone X*

Area with Flood Risk due to Levee *Zone D*

NO SCREEN

Area of Minimal Flood Hazard *Zone X*

Effective LOMRS

Area of Undetermined Flood Hazard *Zone*

Channel, Culvert, or Storm Sewer

Levee, Dike, or Floodwall

20.2

17.5

8

33

Cross Sections with 1% Annual Chance Water Surface Elevation

Coastal Transect

Base Flood Elevation Line (BFE)

Limit of Study

Jurisdiction Boundary

Coastal Transect Baseline

Profile Baseline

Hydrographic Feature

Digital Data Available

No Digital Data Available

Unmapped

Without Base Flood Elevation (BFE)
Zone A, V, A99

With BFE or Depth *Zone AE, AO, AH, VE, AR*

Regulatory Floodway

0.2% Annual Chance Flood Hazard, Area of 1% annual chance flood with average depth less than one foot or with drainage areas of less than one square mile (*Zone X*)

Future Conditions 1% Annual Chance Flood Hazard *Zone X*

Area with Reduced Flood Risk due to Levee. See Notes. *Zone X*

Area with Flood Risk due to Levee *Zone D*

NO SCREEN

Area of Minimal Flood Hazard *Zone X*

Effective LOMRS

Area of Undetermined Flood Hazard *Zone*

Channel, Culvert, or Storm Sewer

Levee, Dike, or Floodwall

20.2

17.5

8

33

Cross Sections with 1% Annual Chance Water Surface Elevation

Coastal Transect

Base Flood Elevation Line (BFE)

Limit of Study

Jurisdiction Boundary

Coastal Transect Baseline

Profile Baseline

Hydrographic Feature

Digital Data Available

No Digital Data Available

Unmapped

Without Base Flood Elevation (BFE)
Zone A, V, A99

With BFE or Depth *Zone AE, AO, AH, VE, AR*

Regulatory Floodway

0.2% Annual Chance Flood Hazard, Area of 1% annual chance flood with average depth less than one foot or with drainage areas of less than one square mile (*Zone X*)

Future Conditions 1% Annual Chance Flood Hazard *Zone X*

Area with Reduced Flood Risk due to Levee. See Notes. *Zone X*

Area with Flood Risk due to Levee *Zone D*

NO SCREEN

Area of Minimal Flood Hazard *Zone X*

Effective LOMRS

Area of Undetermined Flood Hazard *Zone*

Channel, Culvert, or Storm Sewer

Levee, Dike, or Floodwall

20.2

17.5

8

33

Cross Sections with 1% Annual Chance Water Surface Elevation

Coastal Transect

Base Flood Elevation Line (BFE)

Limit of Study

Jurisdiction Boundary

Coastal Transect Baseline

Profile Baseline

Hydrographic Feature

Digital Data Available

No Digital Data Available

Unmapped

The pin displayed on the map is an approximate point selected by the user and does not represent an authoritative property location.

This map complies with FEMA's standards for the use of digital flood maps if it is not void as described below. The basemap shown complies with FEMA's basemap accuracy standards

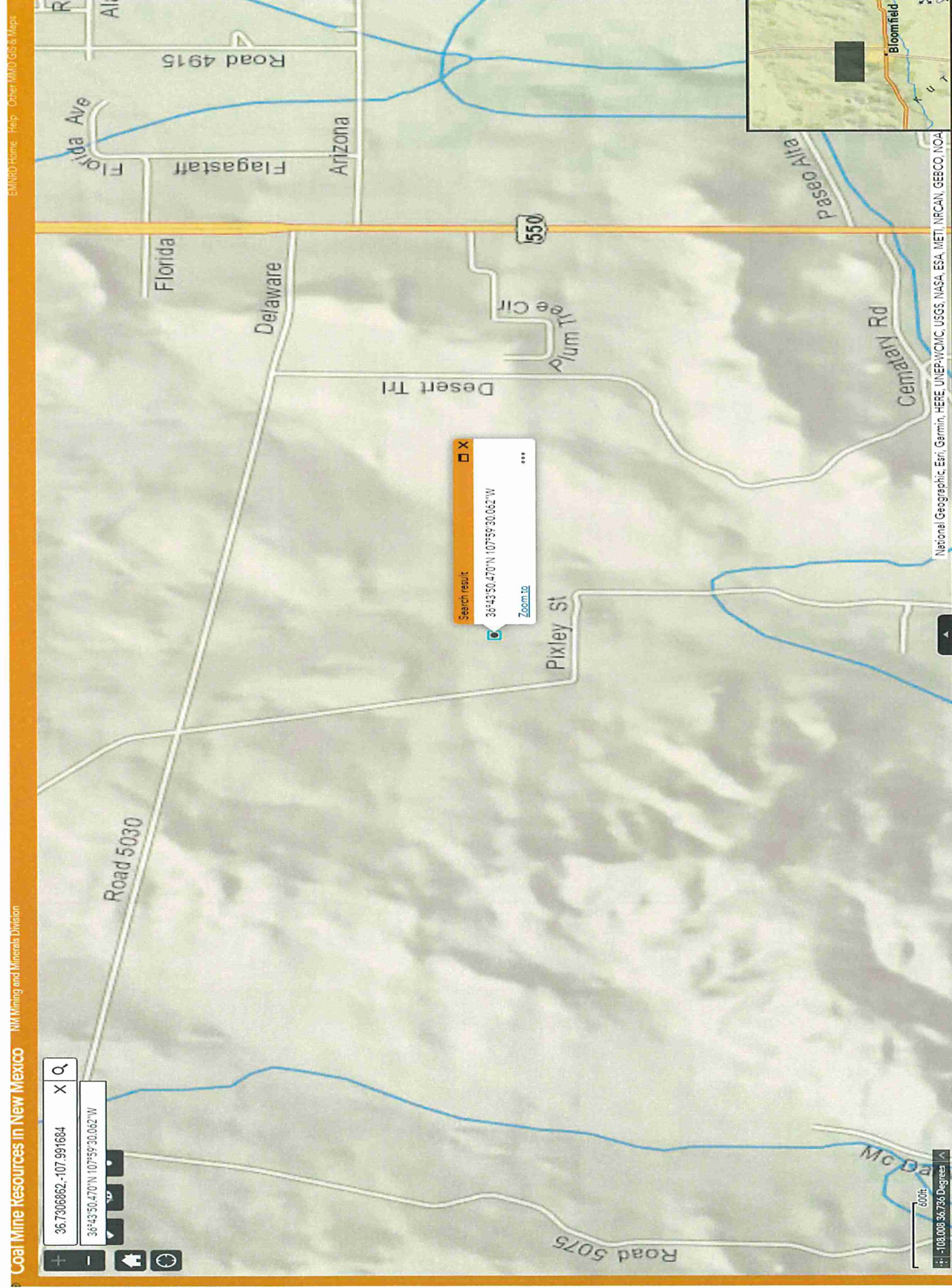
The flood hazard information is derived directly from the authoritative NFHL web services provided by FEMA. This map was exported on 5/17/2021 at 1:27 PM and does not reflect changes or amendments subsequent to this date and time. The NFHL and effective information may change or become superseded by new data over time.

This map image is void if the one or more of the following map elements do not appear: basemap imagery, flood zone labels, legend, scale bar, map creation date, community identifiers, FIRM panel number, and FIRM effective date. Map images for unmapped and unmodernized areas cannot be used for regulatory purposes.



107°59'11"W 36°43'36"N

STATE GAS COM CA #001 Mine Map



Below Grade Tank Operating & Maintenance Plan

State Gas Com CA #001

U/L: A, Section 16, TWN: 29N. RNG: 11W

San Juan County, New Mexico

As stipulated in Rule 19.15.17 NMAC, the following information adheres to the requirements established in closing below-grade tanks (BGTs) on Cross Timbers Energy, LLC well sites. This plan will address the standard protocols and procedures for closure of BGTs.

1. CROSS TIMBERS ENERGY, LLC will operate and maintain a BGT to contain liquids and solids and maintain the integrity of the liner, liner system and secondary containment system to prevent contamination of fresh water and protect public health and environment. CROSS TIMBERS ENERGY, LLC will accomplish this by performing an inspection on a monthly basis.
2. CROSS TIMBERS ENERGY, LLC will not discharge into or store any hazardous waste in the BGT.
3. CROSS TIMBERS ENERGY, LLC shall operate and install the below-grade tank to prevent the collection of surface water run-on. CROSS TIMBERS ENERGY, LLC has built in shut off devices that do not allow a below grade tank to overflow. CROSS TIMBERS ENERGY, LLC constructs berms and above ground to keep from surface water run-on.
4. As per 19.17.15.12 Subsection D, Paragraph 3, CROSS TIMBERS ENERGY, LLC will inspect the below-grade tank at least monthly reviewing several items which include
 - 1) containment berms adequate and no oil present
 - 2) tanks had no visible leaks or sign of corrosion.
 - 3) tank valves, flanges, and hatches had no visible leaks and 4) no evidence of significant spillage of produced liquids. If detected on either inspection, CROSS TIMBERS ENERGY, LLC shall remove any visible or measurable layer of oil from the fluid surface of a below-grade tank to prevent significant accumulation of oil overtime. The written record of the monthly inspections will include the items listed above and will be maintained for five years.

5. CROSS TIMBERS ENERGY, LLC shall require and maintain adequate freeboard to prevent overtopping of the below-grade tank of the below-grade tank.
6. 6. If the below grade tank develops a leak, or if any penetration of the pit liner or below grade tank, occurs below the liquid's surface, then CROSS TIMBERS ENERGY, LLC shall remove all liquid above the damage or leak line within 48 hours. CROSS TIMBERS ENERGY, LLC shall notify the appropriate district office. CROSS TIMBERS ENERGY, LLC shall repair or replace the pit liner or below grade tank, within 48 hours of discovery. If the below grade tank or pit liner does not demonstrate integrity, CROSS TIMBERS ENERGY, LLC shall promptly remove and install a below grade tank or pit liner that complies with Subsection I of 19.15.17.11 NMAC. CROSS TIMBERS ENERGY, LLC shall notify the appropriate district office of a discovery of leaks less than 25 barrels as required pursuant to Subsection B of 19.15.3.116 NMAC shall be reported within twenty-four (24) hours of discovery of leaks greater than 25 barrels. In addition, immediate verbal notification pursuant to Subsection B, Paragraph (1), and Subparagraph (d) of 19.15.3.116 NMAC shall be reported to the division's

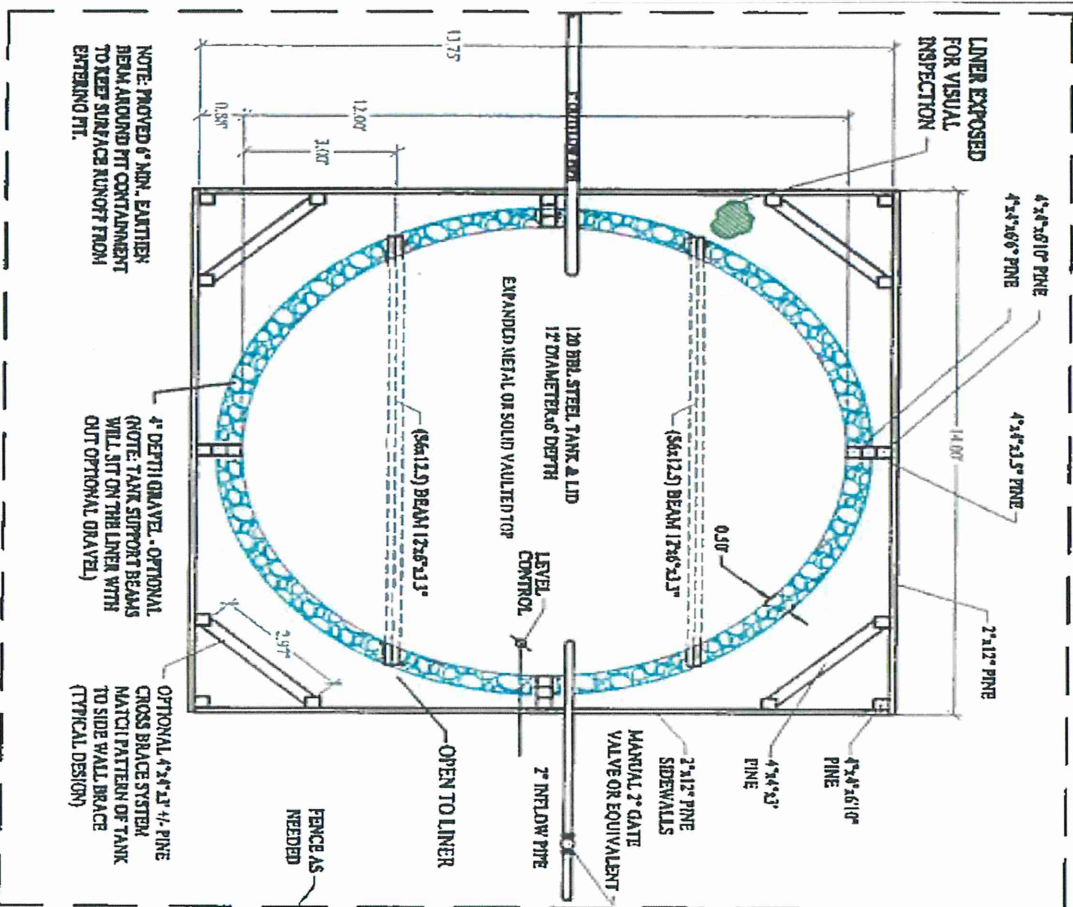
General Design and Construction Plan for Below-Grade Tanks

In accordance with Rule 19. 15.17.11 NMAC the follow information describes the design and construction of below-grade tanks on Cross Timbers LLC standard procedure for all below-grade tanks. A separate plan will be submitted for any below grade tank which does not conform to this plan

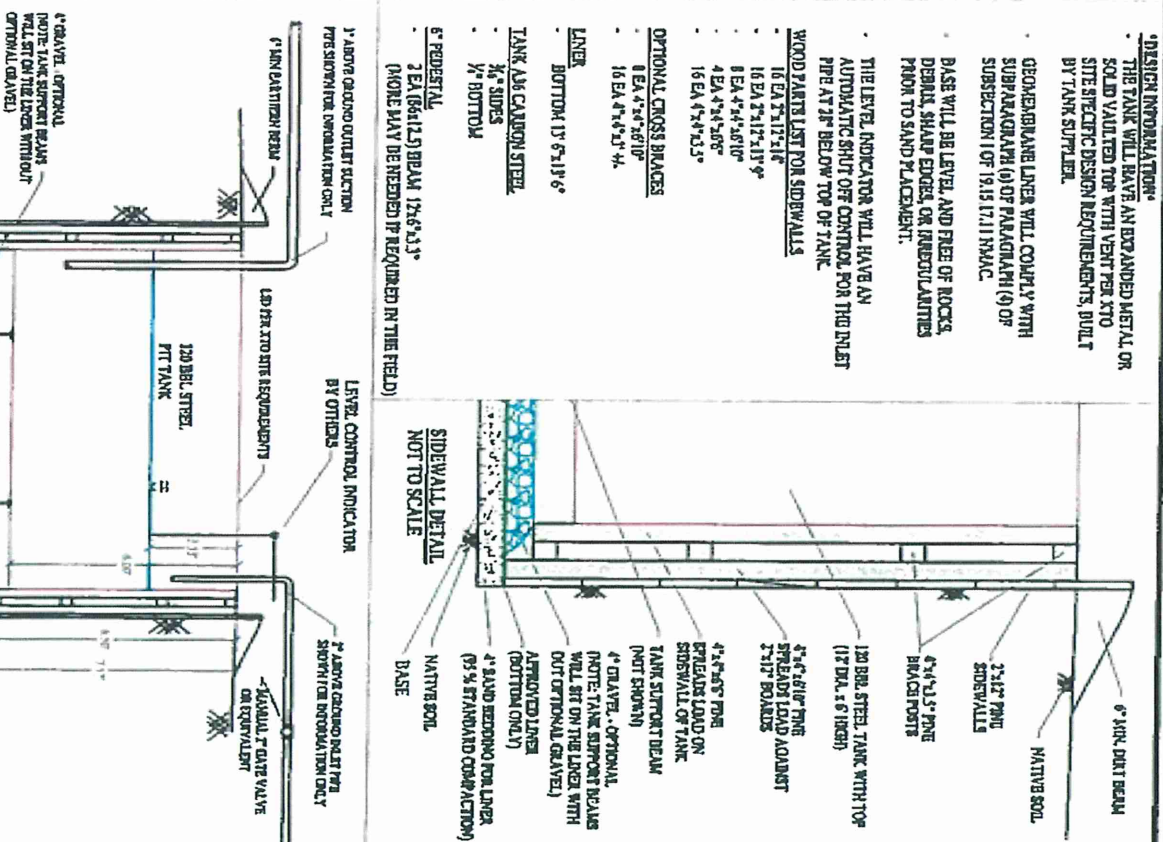
General Plan:

1. Cross Timbers LLC will design and construct below-grade tanks to contain liquids and solids and prevent contamination of fresh water and protect public health and environment.
2. Cross Timbers LLC will post a well sign, in compliance with 19.15.3. 103 NMAC, on the existing well site operated by Cross Timbers where the existing below-grade tank is located. The sign will list the Operator on record as the operator, the location of the well site by unit letter, section, township, range, and emergency telephone numbers.
3. Cross Timbers LLC is requesting approval of an alternative fencing to be used on below-grade tank locations Below Grade tank locations will be fenced utilizing 48" steel mesh field-fence (hog wire) with pipe railing along the top. A 6' chain link fence will be utilized around the well pad if the well site is within a city limit or ¼ mile of a permanent residence, school, hospital, institution, or church. Below-grade tanks located within 1000' of a permanent residence, school, hospital, institution or church will be fenced by 6' chain link fence with at least two strands of barbed wire at the top. All gates associated with below-grade tanks will remain closed and locked when responsible individuals are not on site.
4. Cross Timbers LLC shall construct below-grade tanks with an expanded metal covering.
5. Cross Timbers LLC will ensure that below-grade tanks are constructed of materials resistant to the below-grade tank's particular contents and resistant to damage from sunlight Tanks will be constructed of A36 carbon steel with 3/16" sides and ¼" bottom. (See attached drawing).
6. The below-grade tank system will have a properly constructed foundation consisting of a level base free of rocks, debris, sharp edges, or irregularities to prevent punctures, cracks or indentations of the liner or tank bottom. Sand bedding (4") will be placed on top of a level foundation to ensure prevention of punctures, cracks or indentations of the liner or tank bottom.
7. Cross Timbers LLC will construct a berm and/or diversion ditch in a manner that prevents the collection of surface water run-on. Below-grade tanks will be equipped with automatic high level shut-off devices as well as manually operated shut-off valves. (See attached drawing).
8. Cross Timbers LLC will construct and use below-grade tank's; that do not have double walls. The below-grade tank sidewalls will be open for visual inspection for leaks. The sidewalls of the cellar will be constructed with 2" X 12" pine sidewalls and 4" X 4" pine brace posts. The below-grade tank bottom will be elevated a minimum of 6" above the underlying ground surface and the below grade tank will be underlain with a geomembrane liner to divert leaked liquid to a location that can be visually inspected (See attached drawing)

9. Cross Timbers LLC will equip below-grade tanks designed in this manner with a properly functioning automatic shut off control device and manual controls to prevent overflows.
10. Cross Timbers LLC will demonstrate to the OCD that the geomembrane liner complies with the specifications of Subparagraph (a) of Paragraph (4) of Subsection I of 19.15.17 .11 NMAC and obtain approval from OCD prior to the installation of the design. The geomembrane liner shall have a hydraulic conductivity no greater than 1×10^{-9} cm/sec. The geomembrane liner shall be composed of an impervious, synthetic material that is resistant to petroleum hydrocarbons, salts, and acidic, and alkaline solutions. The liner material shall be resistant to ultraviolet light. Liner compatibility shall comply with EPA S\V-846 method 9090A.



PLAN VIEW



PROFILE VIEW

Well Name: _____

API No.: _____

Legals

Sec: _____ Township: _____

Range: _____

[illegible]

Notes:

Provide Detailed Description:

Misc:

Below Grade Tank Closure Plan

State Gas Com CA #001

U/L: A, Section 16, TWN: 29N. RNG: 11W

San Juan County, New Mexico

As stipulated in Rule 19.15.17.13 NMAC, the following information adheres to the requirements established in closing below-grade tanks (BGTs) on Cross Timbers Energy, LLC well sites. This plan will address the standard protocols and procedures for closure of BGTs.

Cross Timbers Energy, LLC proposes to close its existing BGTs that do not meet the requirements of Paragraphs (1) through (4) of Subsection I of 19.15.17.11 NMAC or are not included in Paragraph (5) of Subsection I of 19.15.17.11 NMAC in accordance with this closure plan and the transitional provisions of Subsection E of 19.15.17.17 NMAC.

The following outline addresses all requirements for closure of Cross Timbers Energy, LLC BGTs:

1. Prior notification of Cross Timbers Energy, LLC intent to close the BGT will follow 19.15.17.13J (I) and (2).

a. Cross Timbers Energy, LLC will notify the surface owner by certified mail, return receipt requested, of closure plans. Evidence of mailing of the notice to the address of the surface owner shown in the county tax records is enough to demonstrate compliance with this requirement.

b. Notification will also be given to the division District III office verbally or by other means at least 72 hours, but not more than one (1) week, prior to any closure operation. The notice will include the operator's name and the well's name, number, and API number, in addition to the well's legal description, including the unit letter, section, township, and range.

2.CROSS TIMBERS ENERGY, LLC will remove liquids and sludge from the BGT prior to implementing a closure method and dispose of the liquids and sludge in a NMOCD's division-approved facility. A list of Cross Timbers Energy, LLC approved disposal facilities is below:

Fluid disposal:

Agua Moss

Sunco well #1

U/L=E, SWNW, Section 2, T29N-R12W San Juan, New Mexico

Permit #NM-01-0009

Basin Disposal Inc.

Basin Disposal well # 1

U/L=F, SWNW, Section 3, T29N-R1 1 W San Juan, New Mexico

Permit #NM-01-0005

Solid disposal: **Envirotech Land Farm**

Disposal Facility

Section 6, T26N-R10W, County Road #7175 San Juan, New Mexico

Permit #NM-01-0011

3.CROSS TIMBERS ENERGY, LLC will remove the BGT from the pit and place it at ground level adjacent to the original BGT site and dispose of it in a NMOCD approved facility or recycle, reuse, or reclaim it in a manner that the NMOCD approved. If a liner is present and must be disposed of it will be cleaned and disposed at a permitted solid waste facility, pursuant to Subparagraph (m) of Paragraph (1) of Subsection C of 19.15.35.8 NMAC.

4. Cross Timbers Energy, LLC will hook up necessary equipment and piping for temporary tank use. At this time, any on-site equipment not necessary to the operation of the tank will be removed from the site.

5.Cross Timbers Energy, LLC will test the soils beneath the original BGT location to determine whether a release has occurred. At a minimum, a five (5) point composite sample will be collected in addition to individual grab samples from areas that are wet, discolored, or showing other evidence of a release. The samples will be analyzed for BTEX, TPH (GRO DRO MRO, and chlorides to demonstrate that they do not exceed certain concentrations. The testing methods and closure standards for those constituents are as follows:

Table I Closure Criteria for Soils Impacted by a Release			
Minimum depth below any point within the horizontal boundary of the release to ground water less than 10,000 mg/l TDS	Constituent	Method*	Limit**
≤ 50 feet	Chloride***	EPA 300.0 or SM4500 Cl B	600 mg/kg
	TPH (GRO+DRO+MRO)	EPA SW-846 Method 8015M	100 mg/kg
	BTEX	EPA SW-846 Method 8021B or 8260B	50 mg/kg
	Benzene	EPA SW-846 Method 8021B or 8260B	10 mg/kg
51 feet-100 feet	Chloride***	EPA 300.0 or SM4500 Cl B	10,000 mg/kg
	TPH (GRO+DRO+MRO)	EPA SW-846 Method 8015M	2,500 mg/kg
	GRO+DRO	EPA SW-846 Method 8015M	1,000 mg/kg
	BTEX	EPA SW-846 Method 8021B or 8260B	50 mg/kg
	Benzene	EPA SW-846 Method 8021B or 8260B	10 mg/kg
>100 feet	Chloride***	EPA 300.0 or SM4500 Cl B	20,000 mg/kg
	TPH (GRO+DRO+MRO)	EPA SW-846 Method 8015M	2,500 mg/kg
	GRO+DRO	EPA SW-846 Method 8015M	1,000 mg/kg
	BTEX	EPA SW-846 Method 8021B or 8260B	50 mg/kg
	Benzene	EPA SW-846 Method 8021B or 8260B	10 mg/kg



Notes: mg/Kg= milligram per kilogram; BTEX = benzene, toluene, ethylbenzene, and total xylenes; TPH = total petroleum hydrocarbons. Other EPA methods that the division approves may be applied to all constituents listed. The Chlorides closure standards will be determined by whichever concentration level is greatest.

6. Cross Timbers Energy, LLC will notify the division District III office of the soil test results on Form C-14 I. It is understood that the NMOCD may require additional delineation upon review of the results.

7. If it is determined that a release has occurred, then Cross Timbers Energy, LLC will comply with 19.15.3.116 NMAC and 19.15.1.19 NMAC, as appropriate.

8. If the confirmation sampling demonstrates that a release has not occurred or that any release does not exceed the concentrations specified above, then Cross Timbers Energy, LLC will backfill the excavation with compacted, non-waste containing, earthen material; construct a division prescribed soil cover; re-contour the site; and move the fiberglass tank onto the newly backfilled and compacted site. The division-prescribed soil cover, re-contouring, and re-vegetation requirements shall comply with Subsections G, H, and I of 19.15.17.13

NMAC.

9. Reclamation will follow 19.15.17.130 (1) and (2).

a. The BGT location and all areas associated with the BGT, including associated access roads, if applicable, will be reclaimed to a safe and stable condition that blends with the surrounding undisturbed area. It is understood that Cross Timbers Energy, LLC shall substantially restore the impacted surface area to the condition that existed prior to oil and gas operations by placement of the soil cover as provided in Subsection H of 19.15.17.13 NMAC and re-contour the location and associated areas to a contour that approximates the original contour and blends with the surrounding topography.

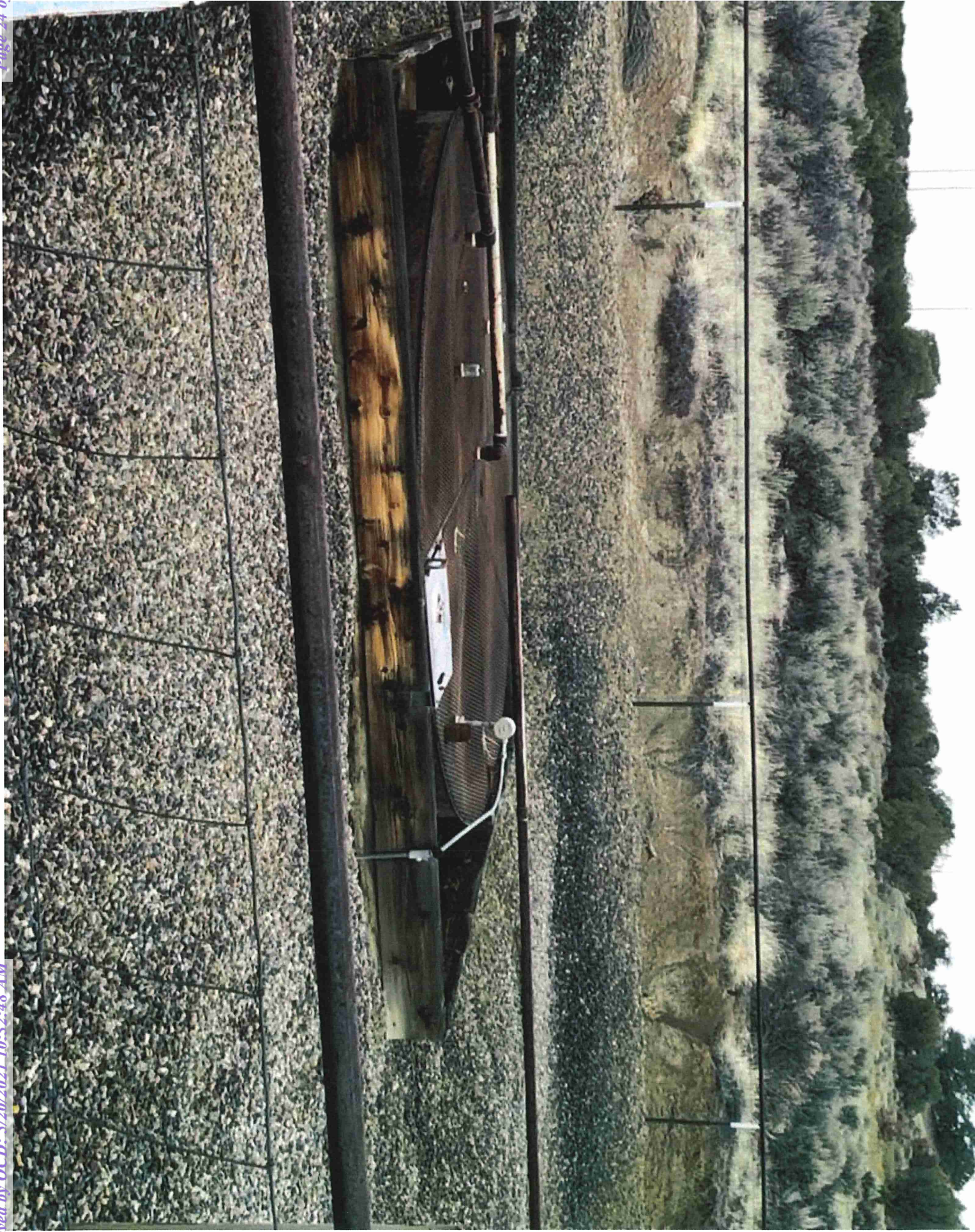
b. Re-vegetation will not be completed at the time the BGT pit is reclaimed but will instead be applied for as part of the P&A process when the well is plugged and abandoned.

10. Soil cover will follow 19.15.17.13H (1) and (3).

a. The soil cover for closures where the BGT has been removed or contaminated soil has been remediated to the NMOCD's satisfaction will consist of the background thickness of topsoil or one (1) foot of suitable material to establish vegetation at the site, whichever is greater.

b. The soil cover will be constructed to the site's existing grade, and all possible efforts will be conducted to prevent ponding of water and erosion of the cover material.

11. Within 60 days of closure completion, Cross Timbers Energy, LLC will submit a closure report on NMOCD's Form C-144, with necessary attachments to document all closure activities, including sampling results; information required by 19.15.17 NMAC; and details on backfilling, capping, and covering, where applicable. Cross Timbers Energy, LLC will certify that all information in the report and attachments is correct and that Cross Timbers Energy, LLC has complied with all applicable closure requirements and conditions specified in the approved closure plan.



District I
1625 N. French Dr., Hobbs, NM 88240
Phone:(575) 393-6161 Fax:(575) 393-0720
District II
811 S. First St., Artesia, NM 88210
Phone:(575) 748-1283 Fax:(575) 748-9720
District III
1000 Rio Brazos Rd., Aztec, NM 87410
Phone:(505) 334-6178 Fax:(505) 334-6170
District IV
1220 S. St Francis Dr., Santa Fe, NM 87505
Phone:(505) 476-3470 Fax:(505) 476-3462

State of New Mexico
Energy, Minerals and Natural Resources
Oil Conservation Division
1220 S. St Francis Dr.
Santa Fe, NM 87505

CONDITIONS

Action 28963

CONDITIONS OF APPROVAL

Operator:	CROSS TIMBERS ENERGY, LLC	400 West 7th Street	Fort Worth, TX76102	OGRID:	298299	Action Number:	28963	Action Type:	C-144B
OCD Reviewer	Condition								
cwhitehead	None								