

Form 3160-4  
(August 2007)

UNITED STATES  
DEPARTMENT OF THE INTERIOR  
BUREAU OF LAND MANAGEMENT

Operator Copy

FORM APPROVED  
OMB No. 1004-0137  
Expires: July 31, 2010

WELL COMPLETION OR RECOMPLETION REPORT AND LOG

5. Lease Serial No.  
NMLC062269A

6. If Indian, Allottee or Tribe Name

7. Unit or CA Agreement Name and No.

8. Lease Name and Well No.  
GHOST RIDER 22-15 FEDERAL COM 201H

9. API Well No.  
30-025-45645-00-S1

10. Field and Pool, or Exploratory  
TRISTE DRAW-BONE SPRING

11. Sec., T., R., M., or Block and Survey  
or Area Sec 22 T24S R32E Mer NMP

12. County or Parish  
LEA

13. State  
NM

17. Elevations (DF, KB, RT, GL)\*  
3590 GL

16. Date Completed  
☐ D & A ☒ Ready to Prod.  
11/20/2019

15. Date T.D. Reached  
08/30/2019

14. Date Spudded  
05/19/2019

20. Depth Bridge Plug Set: MD  
TVD

19. Plug Back T.D.: MD  
TVD

18. Total Depth: MD  
TVD

21. Type Electric & Other Mechanical Logs Run (Submit copy of each)  
NONE

22. Was well cored? ☒ No ☐ Yes (Submit analysis)  
Was DST run? ☒ No ☐ Yes (Submit analysis)  
Directional Survey? ☐ No ☒ Yes (Submit analysis)

1a. Type of Well ☒ Oil Well ☐ Gas Well ☐ Dry ☐ Other

b. Type of Completion ☒ New Well ☐ Work Over ☐ Deepen ☐ Plug Back ☐ Diff. Resvr.  
Other

2. Name of Operator  
APACHE CORPORATION

Contact: REESA FISHER  
E-Mail: Reesa.Fisher@apachecorp.com

3. Address 303 VETERANS AIRPARK LANE SUITE 3000  
MIDLAND, TX 79705

3a. Phone No. (include area code)  
Ph: 432-818-1062

4. Location of Well (Report location clearly and in accordance with Federal requirements)\*  
At surface SESE 400FSL 676FEL 32.196918 N Lat. 103.656166 W Lon  
Sec 22 T24S R32E Mer NMP  
At top prod interval reported below SESE 400FSL 676FEL  
Sec 22 T24S R32E Mer NMP  
At total depth NESE 2583FSL 334FEL  
Sec 15 T24S R32E Mer NMP

14. Date Spudded  
05/19/2019

15. Date T.D. Reached  
08/30/2019

16. Date Completed  
☐ D & A ☒ Ready to Prod.  
11/20/2019

18. Total Depth: MD  
TVD

19. Plug Back T.D.: MD  
TVD

20. Depth Bridge Plug Set: MD  
TVD

21. Type Electric & Other Mechanical Logs Run (Submit copy of each)  
NONE

22. Was well cored? ☒ No ☐ Yes (Submit analysis)  
Was DST run? ☒ No ☐ Yes (Submit analysis)  
Directional Survey? ☐ No ☒ Yes (Submit analysis)

23. Casing and Liner Record (Report all strings set in well)

Hole Size	Size/Grade	Wt. (#/ft.)	Top (MD)	Bottom (MD)	Stage Cementer Depth	No. of Sk. & Type of Cement	Slurry Vol. (BBL)	Cement Top*	Amount Pulled
17.500	13.375 J-55	54.5	0	1116		920		0	
12.250	9.625 J-55	40.0	1116	4820		1215		0	
8.500	5.500 P110RY	20.0	4820	18207		2850		0	

24. Tubing Record

Size	Depth Set (MD)	Packer Depth (MD)	Size	Depth Set (MD)	Packer Depth (MD)	Size	Depth Set (MD)	Packer Depth (MD)
2.875	10112							

25. Producing Intervals

Formation	Top	Bottom	Perforated Interval	Size	No. Holes	Perf. Status
A) BONE SPRING	8812	18207	10733 TO 18081	0.000	420	PRODUCING
B)						
C)						
D)						

26. Perforation Record

27. Acid, Fracture, Treatment, Cement Squeeze, Etc.

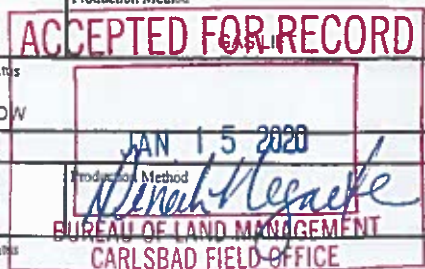
Depth Interval	Amount and Type of Material
10733 TO 18111	14.783,700# PROPANT 650 BBL ACID

28. Production - Interval A

Date First Produced	Test Date	Hours Tested	Test Production	Oil BBL	Gas MCF	Water BBL	Oil Gravity Corr API	Gas Gravity	Production Method
11/20/2019	11/22/2019	24	→	1226.0	1965.0	3714.0			EASLI
Choke Size	Tbg. Press. Flwg. SI	Csg. Press.	24 Hr. Rate	Oil BBL	Gas MCF	Water BBL	Gas:Oil Ratio	Well Status	
			→	1226	1965	3714		POW	

28a. Production - Interval B

Date First Produced	Test Date	Hours Tested	Test Production	Oil BBL	Gas MCF	Water BBL	Oil Gravity Corr API	Gas Gravity	Production Method
			→						
Choke Size	Tbg. Press. Flwg. SI	Csg. Press.	24 Hr. Rate	Oil BBL	Gas MCF	Water BBL	Gas:Oil Ratio	Well Status	
			→						



(See Instructions and spaces for additional data on reverse side)

ELECTRONIC SUBMISSION #495467 VERIFIED BY THE BLM WELL INFORMATION SYSTEM

\*\* BLM REVISED \*\* BLM REVISED \*\* BLM REVISED \*\* BLM REVISED \*\* BLM REVISED \*\*

Reclamation Due: 3/20/2020

28b. Production - Interval C

Date First Produced	Test Date	Hours Tested	Test Production	Oil BBL	Gas MCF	Water BBL	Oil Gravity Corr. API	Gas Gravity	Production Method
			→						
Choke Size	Tbg. Press. Flwg. SI	Csg. Press.	24 Hr. Rate	Oil BBL	Gas MCF	Water BBL	Gas:Oil Ratio	Well Status	
			→						

28c. Production - Interval D

Date First Produced	Test Date	Hours Tested	Test Production	Oil BBL	Gas MCF	Water BBL	Oil Gravity Corr. API	Gas Gravity	Production Method
			→						
Choke Size	Tbg. Press. Flwg. SI	Csg. Press.	24 Hr. Rate	Oil BBL	Gas MCF	Water BBL	Gas:Oil Ratio	Well Status	
			→						

29. Disposition of Gas(Sold, used for fuel, vented, etc.)  
SOLD

30. Summary of Porous Zones (Include Aquifers):

Show all important zones of porosity and contents thereof: Cored intervals and all drill-stem tests, including depth interval tested, cushion used, time tool open, flowing and shut-in pressures and recoveries.

31. Formation (Log) Markers

Formation	Top	Bottom	Descriptions, Contents, etc.	Name	Top Meas. Depth
AVALON	0	1055	ALLUVIUM	AVALON	0
RUSTLER	1055	4876	SALT	RUSTLER	1055
BASE OF SALT	4876	4876	SALT	BASE OF SALT	4876
DELAWARE	4876	8812	SANDSTONE	DELAWARE	4876
BONE SPRING	8812		MIXED CARBONATE O/G	BONE SPRING	8812

32. Additional remarks (include plugging procedure):

33. Circle enclosed attachments:

- |   |                    |               |                       |
|---|--------------------|---------------|-----------------------|
| 1. Electrical/Mechanical Logs (1 full set req'd.)     | 2. Geologic Report | 3. DST Report | 4. Directional Survey |
| 5. Sundry Notice for plugging and cement verification | 6. Core Analysis   | 7. Other      |                       |

34. I hereby certify that the foregoing and attached information is complete and correct as determined from all available records (see attached instructions):

Electronic Submission #495467 Verified by the BLM Well Information System.  
For APACHE CORPORATION, sent to the Hobbs  
Committed to AFMSS for processing by DEBORAH HAM on 01/14/2020 (20DMH0025SE)

Name (please print) REESA FISHER Title SR STAFF REGULATORY ANALYST

Signature (Electronic Submission) Date 12/11/2019

Title 18 U.S.C. Section 1001 and Title 43 U.S.C. Section 1212, make it a crime for any person knowingly and willfully to make to any department or agency of the United States any false, fictitious or fraudulent statements or representations as to any matter within its jurisdiction.

\*\* REVISED \*\* REVISED \*\* REVISED \*\* REVISED \*\* REVISED \*\* REVISED \*\* REVISED \*\*

District I  
1625 N. French Dr., Hobbs, NM 88240  
Phone: (575) 393-6161 Fax: (575) 393-0720  
District II  
811 S. First St., Artesia, NM 88210  
Phone: (575) 748-1283 Fax: (575) 748-9720  
District III  
1000 Rio Brazos Road, Aztec, NM 87410  
Phone: (505) 334-6178 Fax: (505) 334-6170  
District IV  
1220 S. St. Francis Dr., Santa Fe, NM 87505  
Phone: (505) 476-3460 Fax: (505) 476-3462

State of New Mexico  
Energy, Minerals & Natural Resources Department  
OIL CONSERVATION DIVISION  
1220 South St. Francis Dr.  
Santa Fe, NM 87505

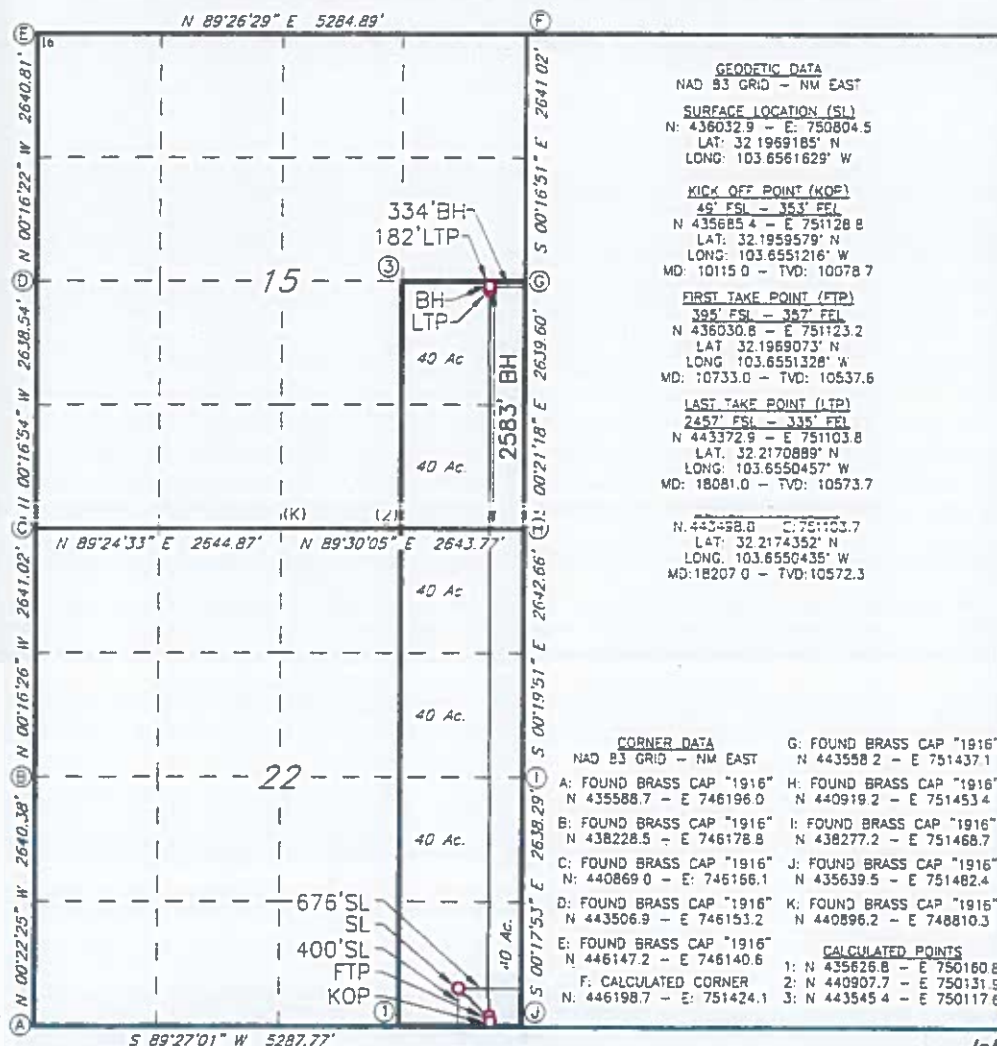
Form C-102  
Revised August 1, 2011  
Submit one copy to appropriate  
District Office

☐ AMENDED REPORT

WELL LOCATION AND ACREAGE DEDICATION PLAT

<sup>1</sup> API Number <b>30-025-45645</b>		<sup>2</sup> Pool Code <b>96603</b>		<sup>3</sup> Pool Name <b>TRISTE DRAW; BONE SPRING</b>					
<sup>4</sup> Property Code <b>325016</b>		<sup>5</sup> Property Name <b>GHOST RIDER 22-15 FEDERAL COM</b>						<sup>6</sup> Well Number <b>201H</b>	
<sup>7</sup> GRID NO. <b>873</b>		<sup>8</sup> Operator Name <b>APACHE CORPORATION</b>						<sup>9</sup> Elevation <b>3590'</b>	
<sup>10</sup> Surface Location									
UL or lot no. <b>P</b>	Section <b>22</b>	Township <b>24S</b>	Range <b>32E</b>	Lot Idn	Feet from the <b>400</b>	North/South line <b>SOUTH</b>	Feet From the <b>676</b>	East/West line <b>EAST</b>	County <b>LEA</b>
<sup>11</sup> Bottom Hole Location If Different From Surface									
UL or lot no. <b>I</b>	Section <b>15</b>	Township <b>24S</b>	Range <b>32E</b>	Lot Idn	Feet from the <b>2583</b>	North/South line <b>SOUTH</b>	Feet from the <b>334</b>	East/West line <b>EAST</b>	County <b>LEA</b>
<sup>12</sup> Dedicated Acres <b>240</b>		<sup>13</sup> Joint or Infill		<sup>14</sup> Consolidation Code		<sup>15</sup> Order No.			

No allowable will be assigned to this completion until all interest have been consolidated or a non-standard unit has been approved by the division.



<b>17 OPERATOR CERTIFICATION</b>	
I hereby certify that the information contained herein is true and complete to the best of my knowledge and belief, and that this organization either owns a working interest or leased mineral interest in the land including the proposed bottom hole location or has a right to drill this well at this location pursuant to a contract with an owner of such a mineral or working interest, or to a voluntary pooling agreement or a compulsory pooling order heretofore entered by the division	
Signature	Date
Printed Name	
E-mail Address	
<b>18 SURVEYOR CERTIFICATION</b>	
I hereby certify that the well location shown on this plat was plotted from field notes of actual surveys made by me or under my supervision, and that the same is true and correct to the best of my belief.	
5-29-2017	
Date of Survey	
Signature and Seal of	
10034	
Certificate Number	
AS-DRILLED REVISED 11/14/19	

Job No.: LS1805674ADR1

**District I**

1625 N. French Dr., Hobbs, NM 88240  
Phone:(575) 393-6161 Fax:(575) 393-0720

**District II**

811 S. First St., Artesia, NM 88210  
Phone:(575) 748-1283 Fax:(575) 748-9720

**District III**

1000 Rio Brazos Rd., Aztec, NM 87410  
Phone:(505) 334-6178 Fax:(505) 334-6170

**District IV**

1220 S. St Francis Dr., Santa Fe, NM 87505  
Phone:(505) 476-3470 Fax:(505) 476-3462

**State of New Mexico**  
**Energy, Minerals and Natural Resources**  
**Oil Conservation Division**  
**1220 S. St Francis Dr.**  
**Santa Fe, NM 87505**

ACKNOWLEDGMENTS

Action 34173

**ACKNOWLEDGMENTS**

Operator: APACHE CORPORATION 303 Veterans Airpark Ln Midland, TX 79705	OGRID: 873
	Action Number: 34173
	Action Type: [C-105] Well (Re)Completion (C-105)

**ACKNOWLEDGMENTS**

<input checked="" type="checkbox"/>	I hereby certify that the required Water Use Report has been, or will be, submitted for this wells completion.
<input checked="" type="checkbox"/>	I hereby certify that the required FracFocus disclosure has been, or will be, submitted for this wells completion.



**District I**  
1625 N. French Dr., Hobbs, NM 88240  
Phone:(575) 393-6161 Fax:(575) 393-0720  
**District II**  
811 S. First St., Artesia, NM 88210  
Phone:(575) 748-1283 Fax:(575) 748-9720  
**District III**  
1000 Rio Brazos Rd., Aztec, NM 87410  
Phone:(505) 334-6178 Fax:(505) 334-6170  
**District IV**  
1220 S. St Francis Dr., Santa Fe, NM 87505  
Phone:(505) 476-3470 Fax:(505) 476-3462

**State of New Mexico**  
**Energy, Minerals and Natural Resources**  
**Oil Conservation Division**  
**1220 S. St Francis Dr.**  
**Santa Fe, NM 87505**

CONDITIONS  
  
Action 34173

CONDITIONS

Operator: APACHE CORPORATION 303 Veterans Airpark Ln Midland, TX 79705	OGRID: 873
	Action Number: 34173
	Action Type: [C-105] Well (Re)Completion (C-105)

CONDITIONS

Created By	Condition	Condition Date
plmartinez	None	6/29/2021