

Well Name: POKER LAKE UNIT	Well Location: T24S / R30E / SEC 14 / SWSE / 32.211259 / -103.848994	County or Parish/State: EDDY / NM
Well Number: 339H	Type of Well: OIL WELL	Allottee or Tribe Name:
Lease Number: NMNM030453	Unit or CA Name:	Unit or CA Number: NMNM71016X
US Well Number: 3001540659	Well Status: Abandoned	Operator: XTO PERMIAN OPERATING LLC

Accepted for record – NMOCD gc 7/13/2021

Subsequent Report

Type of Submission: Subsequent Report	Type of Action: Plug and Abandonment
Date Sundry Submitted: 06/16/2021	Time Sundry Submitted: 02:17
Date Operation Actually Began: 06/16/2021	

Actual Procedure: 06/8-9/2021: POOH w/ tbg and rods. 06/10/2021: Set CIBP @ 7240 per Jim Amos. 06/11/2021: Tag CIBP @ 7240, tst csg to 500 psi – tst gd. Spot 25 sx class C f/ 7240-7086, WOC. 06/14/2021: Tag TOC @ 7019, Spot 30 sx class C f/ 6059 – 4896', WOC. 06/15/2021: Perf @ 4195, Pmp 80 sx class C cmt f/ 4245 – 3776, WOC. Tag TOP @ 3750. Perf @ 970, Est rate. 06/16/2021: Sqz 280 sx class C cmt from 970 to surf inside 7in and out 9-5/8 in csg.

SR Attachments

Actual Procedure

PLU_339H_Wellbore_Diagram____RRC_20210616141659.pdf

Well Number: 339H

Type of Well: OIL WELL

Allottee or Tribe Name:

Lease Number: NMNM030453

Unit or CA Name:

Unit or CA Number: NMNM71016X

US Well Number: 3001540659

Well Status: Abandoned

Operator: XTO PERMIAN OPERATING LLC

Operator Certification

I certify that the foregoing is true and correct. Title 18 U.S.C. Section 1001 and Title 43 U.S.C. Section 1212, make it a crime for any person knowingly and willfully to make to any department or agency of the United States any false, fictitious or fraudulent statements or representations as to any matter within its jurisdiction. Electronic submission of Sundry Notices through this system satisfies regulations requiring a submission of Form 3160-5 or a Sundry Notice.

Operator Electronic Signature: CASSIE EVANS

Signed on: JUN 16, 2021 02:17 PM

Name: XTO PERMIAN OPERATING LLC

Title: Regulatory Analyst

Street Address: 6401 Holiday Hill Road, Bldg 5

City: Midland

State: TX

Phone: (432) 218-3671

Email address: CASSIE.EVANS@EXXONMOBIL.COM

Field Representative

Representative Name:

Street Address:

City:

State:

Zip:

Phone:

Email address:

BLM Point of Contact

BLM POC Name: JAMES A AMOS

BLM POC Title: Acting Assistant Field Manager

BLM POC Phone: 5752345927

BLM POC Email Address: jamos@blm.gov

Disposition: Accepted

Disposition Date: 06/24/2021

Signature: James A. Amos

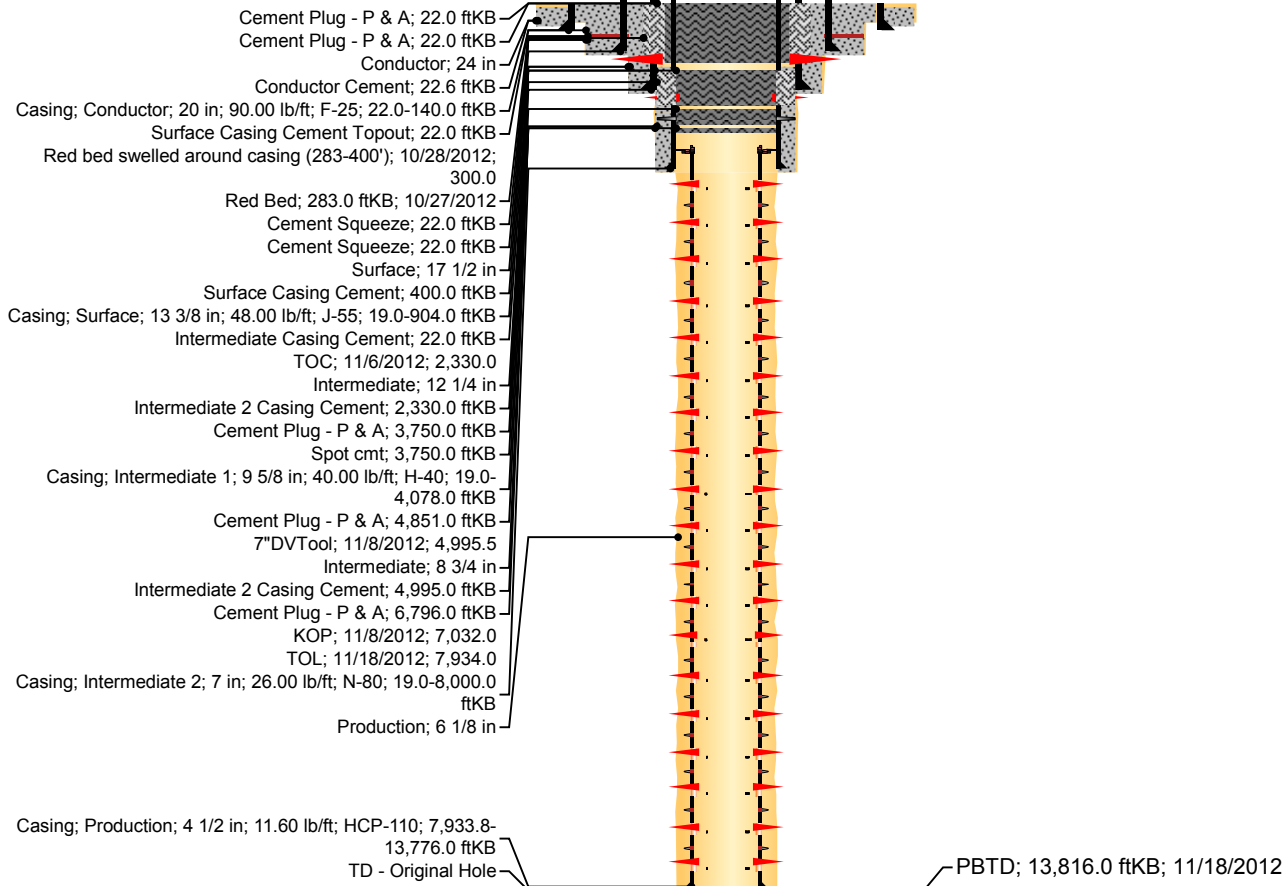


Wellbore Diagram - RRC

Well Name: POKER LAKE UNIT 339H

API/UWI 3001540659	SAP Cost Center ID 1140141001	Permit Number	State/Province New Mexico		County Eddy		
Surface Location T24S-R30E-S14			Spud Date 10/25/2012 00:00	Original KB Elevation (ft) 3,448.00	Ground Elevation (ft) 3,426.00	KB-Ground Distance (ft) 22.00	Surface Casing Flange Elevatio...
Lease Poker Lake Unit							

Vertical schematic (actual)



Perforations

Top (ftKB)	Btm (ftKB)	Current Status
968.0	970.0	
4,194.0	4,195.0	
8,047.0	8,048.0	Sleeve - Closed (8,047.0 - 8,048.0 ftKB)
8,312.0	8,313.0	Sleeve - Open (8,312.0 - 8,313.0 ftKB)
8,585.0	8,586.0	Sleeve - Open (8,585.0 - 8,586.0 ftKB)
8,937.0	8,938.0	Sleeve - Open (8,937.0 - 8,938.0 ftKB)
9,209.0	9,210.0	Sleeve - Open (9,209.0 - 9,210.0 ftKB)
9,523.0	9,524.0	Sleeve - Closed (9,523.0 - 9,524.0 ftKB)
9,883.0	9,884.0	Sleeve - Open (9,883.0 - 9,884.0 ftKB)
10,196.0	10,197.0	Sleeve - Open (10,196.0 - 10,197.0 ftKB)
10,556.0	10,557.0	Sleeve - Open (10,556.0 - 10,557.0 ftKB)
10,870.0	10,871.0	Sleeve - Open (10,870.0 - 10,871.0 ftKB)
11,184.0	11,185.0	Sleeve - Open (11,184.0 - 11,185.0 ftKB)
11,539.0	11,540.0	Sleeve - Open (11,539.0 - 11,540.0 ftKB)
11,846.0	11,847.0	Sleeve - Closed (11,846.0 - 11,847.0 ftKB)
12,204.0	12,205.0	Sleeve - Open (12,204.0 - 12,205.0 ftKB)
12,515.0	12,516.0	Sleeve - Open (12,515.0 - 12,516.0 ftKB)
12,829.0	12,830.0	Sleeve - Open (12,829.0 - 12,830.0 ftKB)
13,181.0	13,182.0	Sleeve - Open (13,181.0 - 13,182.0 ftKB)
13,494.0	13,495.0	Sleeve - Open (13,494.0 - 13,495.0 ftKB)
13,724.0	13,725.0	Sleeve - Open (13,724.0 - 13,725.0 ftKB)

Cement				
Des	Top (ftKB)	Top Meas Meth	Class	Amount (sacks)
Surface Casing Cement	400.0	Temperature Log		
Surface Casing Cement Topout	22.0	Circulated		
Surface Casing Cement Topout	22.0	Circulated	C	250
Surface Casing Cement	400.0	Temperature Log		
Surface Casing Cement	400.0	Temperature Log		
Surface Casing Cement	400.0	Temperature Log	C	1,000
Surface Casing Cement	400.0	Temperature Log	C	300

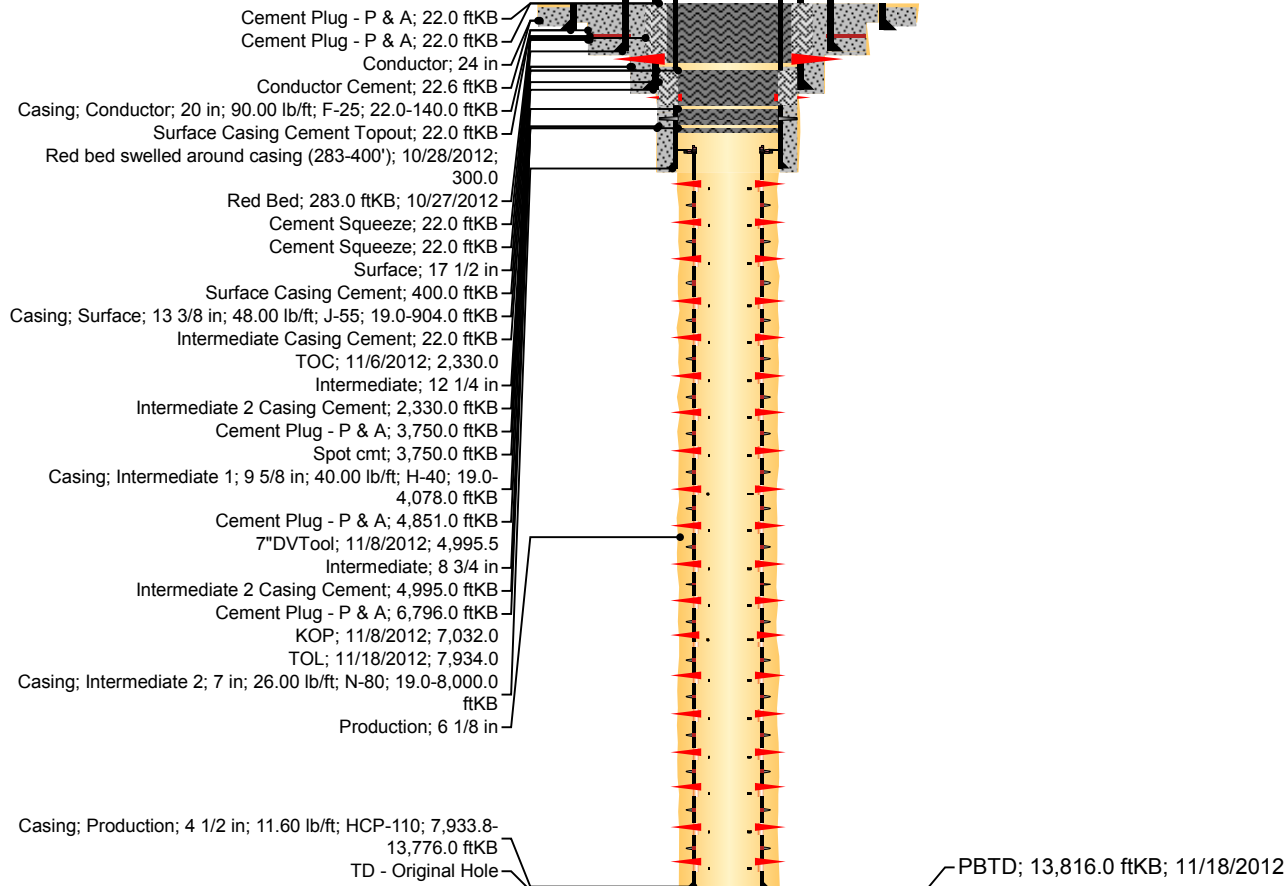


Wellbore Diagram - RRC

Well Name: POKER LAKE UNIT 339H

API/UWI 3001540659	SAP Cost Center ID 1140141001	Permit Number	State/Province New Mexico	County Eddy	Ground Elevation (ft) 3,426.00	KB-Ground Distance (ft) 22.00	Surface Casing Flange Elevatio...
Surface Location T24S-R30E-S14	Spud Date 10/25/2012 00:00	Original KB Elevation (ft) 3,448.00					

Vertical schematic (actual)



Cement				
Des	Top (ftKB)	Top Meas Meth	Class	Amount (sacks)
Surface Casing Cement	400.0	Temperature Log		
Intermediate Casing Cement	22.0	Circulated		
Intermediate Casing Cement	22.0	Circulated	C	1,250
Intermediate Casing Cement	22.0	Circulated	C	250
Intermediate Casing Cement	22.0	Circulated		
Intermediate 2 Casing Cement	4,995.0	Circulated		
Intermediate 2 Casing Cement	2,330.0	Temperature Log		

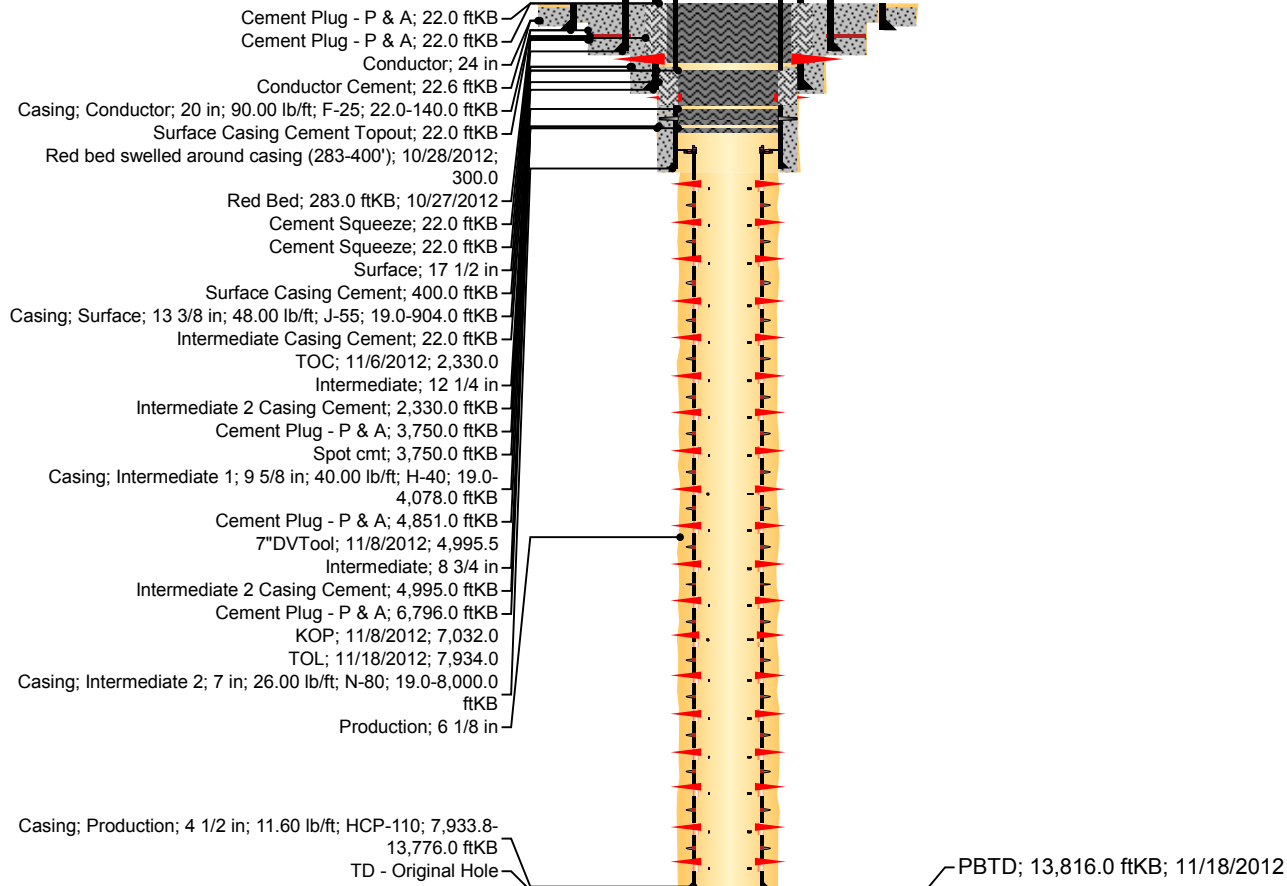


Wellbore Diagram - RRC

Well Name: POKER LAKE UNIT 339H

API/UWI 3001540659	SAP Cost Center ID 1140141001	Permit Number	State/Province New Mexico	County Eddy	Ground Elevation (ft) 3,426.00	KB-Ground Distance (ft) 22.00	Surface Casing Flange Elevatio...
Surface Location T24S-R30E-S14	Spud Date 10/25/2012 00:00	Original KB Elevation (ft) 3,448.00					

Vertical schematic (actual)



Cement				
Des	Top (ftKB)	Top Meas Meth	Class	Amount (sacks)
Intermediate 2 Casing Cement	4,995.0	Circulated	Tuned Light	170
Intermediate 2 Casing Cement	2,330.0	Temperature Log	Tuned Light	125
Intermediate 2 Casing Cement	4,995.0	Circulated	C	150
Intermediate 2 Casing Cement	2,330.0	Temperature Log	C	100
Intermediate 2 Casing Cement	4,995.0	Circulated		
Intermediate 2 Casing Cement	2,330.0	Temperature Log		
Intermediate 2 Casing Cement	4,995.0	Circulated		

District I
1625 N. French Dr., Hobbs, NM 88240
Phone:(575) 393-6161 Fax:(575) 393-0720
District II
811 S. First St., Artesia, NM 88210
Phone:(575) 748-1283 Fax:(575) 748-9720
District III
1000 Rio Brazos Rd., Aztec, NM 87410
Phone:(505) 334-6178 Fax:(505) 334-6170
District IV
1220 S. St Francis Dr., Santa Fe, NM 87505
Phone:(505) 476-3470 Fax:(505) 476-3462

State of New Mexico
Energy, Minerals and Natural Resources
Oil Conservation Division
1220 S. St Francis Dr.
Santa Fe, NM 87505

CONDITIONS

Action 35892

CONDITIONS

Operator: XTO PERMIAN OPERATING LLC. 6401 HOLIDAY HILL ROAD MIDLAND, TX 79707	OGRID: 373075
	Action Number: 35892
	Action Type: [C-103] Sub. Plugging (C-103P)

CONDITIONS

Created By	Condition	Condition Date
gcordero	None	7/13/2021