

District I  
1625 N. French Dr., Hobbs, NM 88240  
District II  
811 S. First St., Artesia, NM 88210  
District III  
1000 Rio Brazos Rd., Aztec, NM 87410  
District IV  
1220 S. St. Francis Dr., Santa Fe, NM 87505

State of New Mexico  
Energy, Minerals & Natural  
Resources

Form C-104  
Revised August 1, 2011

Submit one copy to appropriate District Office

Oil Conservation Division  
1220 South St. Francis Dr.

AMENDED REPORT

**I. REQUEST FOR ALLOWABLE MINERAL AUTHORIZATION TO TRANSPORT**

<sup>1</sup> Operator name and Address EOG RESOURCES INC PO BOX 2267 MIDLAND, TEXAS 79702		<sup>2</sup> OGRID Number 7377
		<sup>3</sup> Reason for Filing Code/ Effective Date NW 05/17/2021
<sup>4</sup> API Number 30 - 025-46771	<sup>5</sup> Pool Name TRISTE DRAW; BONE SPRING, EAST	<sup>6</sup> Pool Code 96682
<sup>7</sup> Property Code 317562	<sup>8</sup> Property Name FRAZIER 27 STATE COM	<sup>9</sup> Well Number 102H

**II. <sup>10</sup> Surface Location**

Ul or lot no.	Section	Township	Range	Lot Idn	Feet from the	North/South Line	Feet from the	East/West line	County
B	27	24S	33E		1003	NORTH	2285	EAST	LEA

**<sup>11</sup> Bottom Hole Location**

UL or lot no.	Section	Township	Range	Lot Idn	Feet from the	North/South line	Feet from the	East/West line	County
O	34	24S	33E		321	SOUTH	2028	EAST	LEA

<sup>12</sup> Lse Code	<sup>13</sup> Producing Method Code FLOWING	<sup>14</sup> Gas Connection Date	<sup>15</sup> C-129 Permit Number	<sup>16</sup> C-129 Effective Date	<sup>17</sup> C-129 Expiration Date
------------------------	--	-----------------------------------	-----------------------------------	------------------------------------	-------------------------------------

**III. Oil and Gas Transporters**

<sup>18</sup> Transporter OGRID	<sup>19</sup> Transporter Name and Address	<sup>20</sup> O/G/W
372812	EOGRM	OIL
151618	ENTERPRISE FIELD SERVICES	GAS
298751	REGENCY FIELD SERVICES	GAS
36785	DCP MIDSTREAM	GAS

**IV. Well Completion Data**

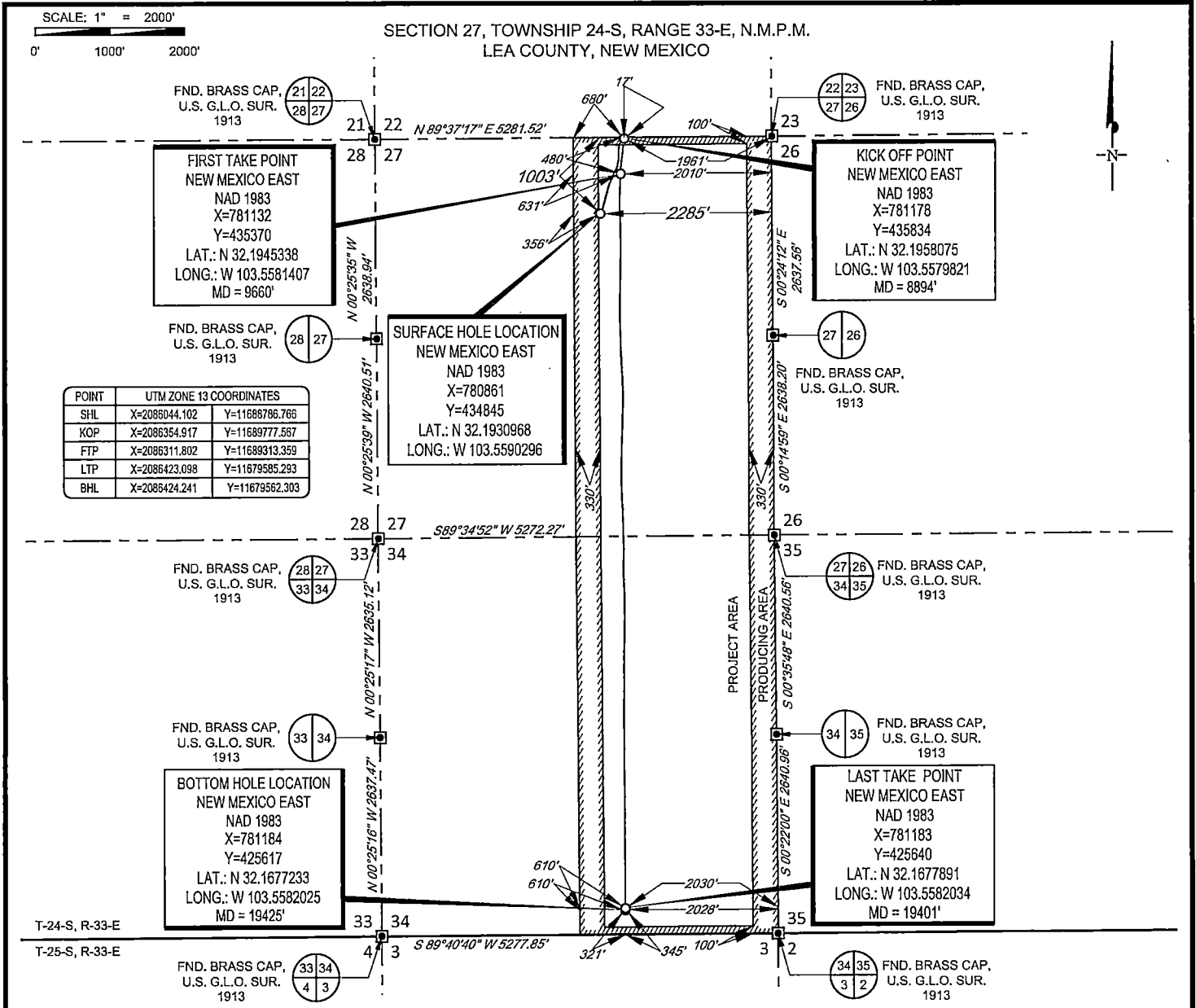
<sup>21</sup> Spud Date 11/11/2020	<sup>22</sup> Ready Date 05/17/2021	<sup>23</sup> TD 19,425'	<sup>24</sup> PBDT 19,401'	<sup>25</sup> Perforations 9660- 19,401'	<sup>26</sup> DHC, MC
<sup>27</sup> Hole Size	<sup>28</sup> Casing & Tubing Size	<sup>29</sup> Depth Set	<sup>30</sup> Sacks Cement		
17 1/2"	13 3/8"	1335'	1090 SXS CL C/CIRC		
12 1/4"	9 5/8"	5133'	1420 SXS CL C/CIRC		
8 1/2"	5 1/2"	19,410'	2675 SXS CL C & H 2200' CBL		

**V. Well Test Data**

<sup>31</sup> Date New Oil 05/17/2021	<sup>32</sup> Gas Delivery Date 05/17/2021	<sup>33</sup> Test Date 05/27/2021	<sup>34</sup> Test Length 24 HRS	<sup>35</sup> Tbg. Pressure	<sup>36</sup> Csg. Pressure 924
<sup>37</sup> Choke Size 60	<sup>38</sup> Oil 3636	<sup>39</sup> Water 3998	<sup>40</sup> Gas 6350		<sup>41</sup> Test Method

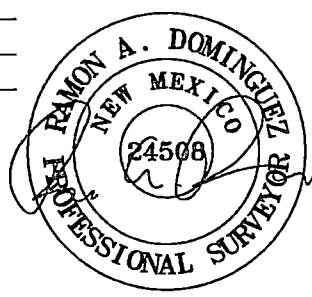
<sup>42</sup> I hereby certify that the rules of the Oil Conservation Division have been complied with and that the information given above is true and complete to the best of my knowledge and belief. Signature: Kay Maddox Printed name: Kay Maddox Title: SENIOR REGULATORY SPECIALIST E-mail Address: kay_maddox@eogresources.com Date: 06/08/2021 Phone: 432-638-8475	OIL CONSERVATION DIVISION
	Approved by: <b>KURT SIMMONS</b>
	Title: <b>NMOCD, SANTA FE</b>
	Approval Date: <b>08/10/2021</b>





POINT	UTM ZONE 13 COORDINATES	
SHL	X=2086044.102	Y=11688786.766
KOP	X=2086354.917	Y=11689777.587
FTP	X=2086311.802	Y=11689313.359
LTP	X=2086423.098	Y=11679585.293
BHL	X=2086424.241	Y=11679562.303

LEASE NAME & WELL NO.: FRAZIER 27 STATE COM #102H  
 SECTION 27 TWP 24-S RGE 33-E SURVEY N.M.P.M.  
 COUNTY LEA STATE NM ELEVATION 3513'  
 DESCRIPTION 1003' FNL & 2285' FEL



**TOPOGRAPHIC**  
 LOYALTY INNOVATION LEGACY  
 1400 EVERMAN PARKWAY, Ste. 146 • FT. WORTH, TEXAS 76140  
 TELEPHONE: (817) 744-7512 • FAX (817) 744-7554  
 2903 NORTH BIG SPRING • MIDLAND, TEXAS 79705  
 TELEPHONE: (432) 682-1653 OR (800) 767-1653 • FAX (432) 682-1743  
 WWW.TOPOGRAPHIC.COM

Ramon A. Dominguez, P.S. No. 24508  
 APRIL 28, 2021



FRAZIER 27 STATE COM #102H AS-COMplete		REVISION:
DATE:	04/26/2021	
FILE:	AD_FRAZIER_27_STATE_COM_102H	
DRAWN BY:	A.V.F.	
SHEET:	1 OF 1	

NOTES:  
 1. ORIGINAL DOCUMENT SIZE: 8.5" X 11"  
 2. ALL BEARINGS, DISTANCES, AND COORDINATE VALUES CONTAINED HEREIN ARE GRID BASED UPON THE NEW MEXICO COORDINATE SYSTEM 1983, EAST ZONE, U.S. SURVEY FEET.  
 3. THIS WELL LOCATION SHOWN HEREON HAS BEEN SURVEYED ON THE GROUND UNDER MY SUPERVISION AND PREPARED ACCORDING TO THE EVIDENCE FOUND AT THE TIME OF SURVEY, AND DATA PROVIDED BY EOG RESOURCES, INC. THIS CERTIFICATION IS MADE AND LIMITED TO THOSE PERSONS OR ENTITIES SHOWN ON THE FACE OF THIS PLAT AND IS NON-TRANSFERABLE. THIS SURVEY IS CERTIFIED FOR THIS TRANSACTION ONLY.



## **EOG Resources - Midland**

**Lea County, NM (NAD 83 NME)**

**Frazier 27 State Com**

**#102H**

**OH**

**Design: OH**

## **Midland PVA**

**05 December, 2020**



**EOG Resources**  
Midland PVA

<b>Company:</b>	EOG Resources - Midland	<b>Local Co-ordinate Reference:</b>	Well #102H
<b>Project:</b>	Lea County, NM (NAD 83 NME)	<b>TVD Reference:</b>	KB = 26' @ 3541.0usft
<b>Site:</b>	Frazier 27 State Com	<b>MD Reference:</b>	KB = 26' @ 3541.0usft
<b>Well:</b>	#102H	<b>North Reference:</b>	Grid
<b>Wellbore:</b>	OH	<b>Survey Calculation Method:</b>	Minimum Curvature
<b>Design:</b>	OH	<b>Database:</b>	EDM

<b>Project</b>	Lea County, NM (NAD 83 NME)		
<b>Map System:</b>	US State Plane 1983	<b>System Datum:</b>	Mean Sea Level
<b>Geo Datum:</b>	North American Datum 1983		
<b>Map Zone:</b>	New Mexico Eastern Zone		

<b>Site</b>	Frazier 27 State Com				
<b>Site Position:</b>		<b>Northing:</b>	434,765.00 usft	<b>Latitude:</b>	32° 11' 34.246 N
<b>From:</b>	Map	<b>Easting:</b>	782,361.00 usft	<b>Longitude:</b>	103° 33' 15.061 W
<b>Position Uncertainty:</b>	0.0 usft	<b>Slot Radius:</b>	13-3/16 "	<b>Grid Convergence:</b>	0.42 °

<b>Well</b>	#102H					
<b>Well Position</b>	<b>+N/-S</b>	0.0 usft	<b>Northing:</b>	434,845.00 usft	<b>Latitude:</b>	32° 11' 35.145 N
	<b>+E/-W</b>	0.0 usft	<b>Easting:</b>	780,861.00 usft	<b>Longitude:</b>	103° 33' 32.509 W
<b>Position Uncertainty</b>		0.0 usft	<b>Wellhead Elevation:</b>	usft	<b>Ground Level:</b>	3,515.0 usft

<b>Wellbore</b>	OH				
<b>Magnetics</b>	<b>Model Name</b>	<b>Sample Date</b>	<b>Declination (°)</b>	<b>Dip Angle (°)</b>	<b>Field Strength (nT)</b>
	IGRF2020	11/23/2020	6.60	59.89	47,536.36902432

<b>Design</b>	OH				
<b>Audit Notes:</b>					
<b>Version:</b>	1.0	<b>Phase:</b>	ACTUAL	<b>Tie On Depth:</b>	0.0
<b>Vertical Section:</b>		<b>Depth From (TVD) (usft)</b>	<b>+N/-S (usft)</b>	<b>+E/-W (usft)</b>	<b>Direction (°)</b>
		0.0	0.0	0.0	178.01

<b>Survey Program</b>	<b>Date</b>	12/5/2020			
<b>From (usft)</b>	<b>To (usft)</b>	<b>Survey (Wellbore)</b>	<b>Tool Name</b>	<b>Description</b>	
187.0	19,425.0	Driltech MWD (OH)	EOG MWD+IFR1	MWD + IFR1	



**EOG Resources**

Midland PVA

<b>Company:</b>	EOG Resources - Midland	<b>Local Co-ordinate Reference:</b>	Well #102H
<b>Project:</b>	Lea County, NM (NAD 83 NME)	<b>TVD Reference:</b>	KB = 26' @ 3541.0usft
<b>Site:</b>	Frazier 27 State Com	<b>MD Reference:</b>	KB = 26' @ 3541.0usft
<b>Well:</b>	#102H	<b>North Reference:</b>	Grid
<b>Wellbore:</b>	OH	<b>Survey Calculation Method:</b>	Minimum Curvature
<b>Design:</b>	OH	<b>Database:</b>	EDM

Survey											
MD (usft)	Inc (°)	Azi (azimuth) (°)	TVD (usft)	N/S (usft)	E/W (usft)	DLeg (°/100usft)	Build (°/100usft)	Turn (°/100usft)	High to Plan (usft)	Right to Plan (usft)	
0.0	0.00	0.00	0.0	0.0	0.0	0.00	0.00	0.00	0.0	0.0	0.0
187.0	0.62	180.14	187.0	-1.0	0.0	0.33	0.33	0.00	-1.0	0.0	
215.0	0.53	181.64	215.0	-1.3	0.0	0.33	-0.32	5.36	-1.3	0.0	
304.0	0.79	173.20	304.0	-2.3	0.1	0.31	0.29	-9.48	-2.3	-0.2	
395.0	0.97	173.55	395.0	-3.7	0.2	0.20	0.20	0.38	-3.7	-0.2	
486.0	1.14	156.59	486.0	-5.3	0.7	0.39	0.19	-18.64	-5.1	-1.5	
575.0	0.79	136.64	575.0	-6.6	1.4	0.54	-0.39	-22.42	-5.8	-3.5	
673.0	0.97	100.43	672.9	-7.2	2.7	0.58	0.18	-36.95	-4.0	-6.6	
768.0	0.79	55.78	767.9	-7.0	4.0	0.73	-0.19	-47.00	0.6	-8.0	
956.0	1.49	52.00	955.9	-4.7	7.0	0.37	0.37	-2.01	-2.6	-8.1	
1,050.0	1.76	46.11	1,049.9	-3.0	9.0	0.34	0.29	-6.27	-4.4	-8.4	
1,144.0	1.93	34.77	1,143.8	-0.7	11.0	0.43	0.18	-12.06	-5.7	-9.4	
1,239.0	1.49	14.91	1,238.8	1.8	12.2	0.77	-0.46	-20.91	-4.9	-11.3	
1,277.0	1.23	24.14	1,276.8	2.7	12.5	0.89	-0.68	24.29	-7.6	-10.3	
1,427.0	0.97	1.29	1,426.7	5.4	13.2	0.34	-0.17	-15.23	-5.6	-13.0	
1,521.0	2.29	18.69	1,520.7	8.0	13.8	1.48	1.40	18.51	-9.4	-10.7	
1,615.0	4.92	20.80	1,614.5	13.5	15.9	2.80	2.80	2.24	-10.3	-10.9	
1,709.0	7.39	19.13	1,707.9	23.0	19.3	2.63	2.63	-1.78	-11.4	-12.0	
1,803.0	9.41	16.58	1,800.9	36.1	23.4	2.18	2.15	-2.71	-13.0	-13.1	
1,897.0	9.41	15.96	1,893.7	50.8	27.7	0.11	0.00	-0.66	-13.5	-13.7	
1,991.0	9.23	16.23	1,986.4	65.5	32.0	0.20	-0.19	0.29	-12.7	-14.1	
2,086.0	10.29	15.96	2,080.0	80.9	36.4	1.12	1.12	-0.28	-12.5	-14.5	
2,180.0	11.43	14.21	2,172.4	98.0	41.0	1.26	1.21	-1.86	-13.8	-15.1	
2,274.0	11.43	14.21	2,264.5	116.1	45.6	0.00	0.00	0.00	-16.4	-14.9	
2,368.0	11.08	14.38	2,356.7	133.9	50.1	0.37	-0.37	0.18	-18.8	-14.8	
2,462.0	10.82	15.17	2,449.0	151.1	54.7	0.32	-0.28	0.84	-20.8	-14.6	
2,556.0	10.99	17.02	2,541.3	168.2	59.6	0.41	0.18	1.97	-23.0	-14.3	



**EOG Resources**

Midland PVA

**Company:** EOG Resources - Midland  
**Project:** Lea County, NM (NAD 83 NME)  
**Site:** Frazier 27 State Com  
**Well:** #102H  
**Wellbore:** OH  
**Design:** OH

**Local Co-ordinate Reference:** Well #102H  
**TVD Reference:** KB = 26' @ 3541.0usft  
**MD Reference:** KB = 26' @ 3541.0usft  
**North Reference:** Grid  
**Survey Calculation Method:** Minimum Curvature  
**Database:** EDM

Survey												
MD (usft)	Inc (°)	Azi (azimuth) (°)	TVD (usft)	N/S (usft)	E/W (usft)	DLeg (°/100usft)	Build (°/100usft)	Turn (°/100usft)	High to Plan (usft)	Right to Plan (usft)		
2,650.0	10.90	15.44	2,633.6	185.4	64.6	0.33	-0.10	-1.68	-24.4	-15.4		
2,745.0	10.90	16.23	2,726.9	202.6	69.5	0.16	0.00	0.83	-26.4	-15.4		
2,839.0	10.82	16.75	2,819.2	219.6	74.5	0.13	-0.09	0.55	-28.2	-15.7		
2,934.0	10.82	16.32	2,912.5	236.7	79.6	0.08	0.00	-0.45	-29.8	-16.4		
3,028.0	10.55	15.00	3,004.9	253.5	84.3	0.39	-0.29	-1.40	-30.8	-17.4		
3,122.0	10.46	15.08	3,097.3	270.1	88.8	0.10	-0.10	0.09	-31.9	-17.5		
3,217.0	10.11	16.14	3,190.8	286.4	93.3	0.42	-0.37	1.12	-33.0	-17.2		
3,311.0	9.50	14.82	3,283.4	301.8	97.6	0.69	-0.65	-1.40	-32.5	-18.2		
3,405.0	9.41	15.35	3,376.1	316.7	101.6	0.13	-0.10	0.56	-32.1	-18.0		
3,500.0	9.32	15.61	3,469.8	331.6	105.7	0.10	-0.09	0.27	-31.4	-18.1		
3,689.0	7.56	13.50	3,656.8	358.5	112.8	0.95	-0.93	-1.12	-26.1	-19.2		
3,783.0	6.77	11.31	3,750.0	369.9	115.3	0.89	-0.84	-2.33	-21.0	-19.5		
3,972.0	8.09	20.18	3,937.5	393.3	122.1	0.92	0.70	4.69	-15.8	-17.5		
4,067.0	10.82	25.54	4,031.2	407.6	128.2	3.02	2.87	5.64	-17.0	-18.4		
4,161.0	9.67	26.95	4,123.7	422.6	135.6	1.25	-1.22	1.50	-18.5	-21.2		
4,256.0	8.35	29.15	4,217.5	435.8	142.6	1.44	-1.39	2.32	-18.4	-24.2		
4,350.0	7.74	24.75	4,310.6	447.5	148.6	0.92	-0.65	-4.68	-13.8	-28.9		
4,539.0	7.74	32.14	4,497.9	469.8	160.6	0.53	0.00	3.91	-11.9	-35.0		
4,633.0	6.95	36.71	4,591.1	479.7	167.4	1.04	-0.84	4.86	-11.7	-39.4		
4,728.0	7.21	21.68	4,685.4	489.9	173.1	1.96	0.27	-15.82	3.5	-44.6		
4,813.0	8.00	10.34	4,769.6	500.7	176.1	1.99	0.93	-13.34	15.5	-43.1		
4,907.0	7.91	15.70	4,862.7	513.3	179.0	0.79	-0.10	5.70	14.5	-44.0		
5,002.0	9.15	25.10	4,956.7	526.5	184.0	1.96	1.31	9.89	9.2	-47.6		
5,086.0	10.64	28.44	5,039.4	539.3	190.5	1.90	1.77	3.98	6.0	-51.1		
5,189.0	10.73	25.98	5,140.6	556.3	199.2	0.45	0.09	-2.39	6.3	-54.7		
5,284.0	12.05	24.75	5,233.8	573.3	207.3	1.41	1.39	-1.29	4.7	-57.6		
5,378.0	13.54	27.21	5,325.4	592.0	216.4	1.69	1.59	2.62	-2.9	-60.8		



**EOG Resources**  
Midland PVA

<b>Company:</b>	EOG Resources - Midland	<b>Local Co-ordinate Reference:</b>	Well #102H
<b>Project:</b>	Lea County, NM (NAD 83 NME)	<b>TVD Reference:</b>	KB = 26' @ 3541.0usft
<b>Site:</b>	Frazier 27 State Com	<b>MD Reference:</b>	KB = 26' @ 3541.0usft
<b>Well:</b>	#102H	<b>North Reference:</b>	Grid
<b>Wellbore:</b>	OH	<b>Survey Calculation Method:</b>	Minimum Curvature
<b>Design:</b>	OH	<b>Database:</b>	EDM

Survey												
MD (usft)	Inc (°)	Azi (azimuth) (°)	TVD (usft)	N/S (usft)	E/W (usft)	DLeg (°/100usft)	Build (°/100usft)	Turn (°/100usft)	High to Plan (usft)	Right to Plan (usft)		
5,472.0	14.86	20.80	5,416.6	613.0	225.7	2.18	1.40	-6.82	-3.4	-63.7		
5,566.0	15.48	15.44	5,507.3	636.4	233.3	1.63	0.66	-5.70	-6.3	-65.2		
5,661.0	13.63	9.28	5,599.2	659.6	238.5	2.54	-1.95	-6.48	-7.3	-65.3		
5,756.0	12.93	6.74	5,691.7	681.2	241.6	0.96	-0.74	-2.67	-10.3	-63.8		
5,850.0	12.57	5.58	5,783.4	701.9	243.8	0.47	-0.38	-1.23	-14.0	-61.7		
5,944.0	12.93	4.18	5,875.1	722.5	245.6	0.50	0.38	-1.49	-17.5	-59.4		
6,039.0	13.01	3.74	5,967.6	743.8	247.0	0.13	0.08	-0.46	-22.6	-56.5		
6,133.0	12.31	0.48	6,059.4	764.4	247.8	1.06	-0.74	-3.47	-24.5	-54.4		
6,228.0	11.70	358.29	6,152.3	784.1	247.6	0.80	-0.64	-2.31	-26.6	-51.1		
6,322.0	10.99	356.88	6,244.4	802.6	246.8	0.81	-0.76	-1.50	-28.6	-47.1		
6,417.0	10.99	355.39	6,337.7	820.7	245.6	0.30	0.00	-1.57	-30.2	-42.7		
6,511.0	10.82	3.03	6,430.0	838.4	245.4	1.55	-0.18	8.13	-37.5	-34.0		
6,606.0	9.41	14.02	6,523.5	854.9	247.7	2.51	-1.48	11.57	-43.5	-24.5		
6,700.0	9.32	13.14	6,616.3	869.7	251.3	0.18	-0.10	-0.94	-42.4	-24.8		
6,794.0	9.32	12.09	6,709.0	884.6	254.6	0.18	0.00	-1.12	-41.1	-25.0		
6,888.0	9.06	12.53	6,801.8	899.3	257.8	0.29	-0.28	0.47	-40.2	-24.1		
6,982.0	5.36	28.52	6,895.1	910.3	261.5	4.44	-3.94	17.01	-41.1	-14.1		
7,076.0	4.92	27.11	6,988.7	917.8	265.5	0.49	-0.47	-1.50	-33.4	-18.6		
7,170.0	4.84	25.71	7,082.4	925.0	269.0	0.15	-0.09	-1.49	-25.2	-22.6		
7,264.0	4.66	26.41	7,176.0	931.9	272.4	0.20	-0.19	0.74	-18.6	-25.3		
7,358.0	4.31	26.85	7,269.8	938.5	275.7	0.37	-0.37	0.47	-14.5	-27.6		
7,453.0	4.04	27.73	7,364.5	944.7	278.9	0.29	-0.28	0.93	-13.2	-29.3		
7,547.0	3.61	28.17	7,458.3	950.2	281.8	0.46	-0.46	0.47	-14.1	-30.5		
7,641.0	3.78	32.56	7,552.1	955.4	284.9	0.35	0.18	4.67	-19.9	-30.0		
7,735.0	3.69	38.54	7,645.9	960.4	288.5	0.43	-0.10	6.36	-28.8	-27.5		
7,829.0	2.90	37.66	7,739.7	964.7	291.8	0.84	-0.84	-0.94	-33.8	-28.0		
7,923.0	2.37	29.66	7,833.6	968.2	294.2	0.68	-0.56	-8.51	-33.9	-32.8		





EOG Resources

Midland PVA

**Company:** EOG Resources - Midland  
**Project:** Lea County, NM (NAD 83 NME)  
**Site:** Frazier 27 State Com  
**Well:** #102H  
**Wellbore:** OH  
**Design:** OH

**Local Co-ordinate Reference:** Well #102H  
**TVD Reference:** KB = 26' @ 3541.0usft  
**MD Reference:** KB = 26' @ 3541.0usft  
**North Reference:** Grid  
**Survey Calculation Method:** Minimum Curvature  
**Database:** EDM

Survey											
MD (usft)	Inc (°)	Azi (azimuth) (°)	TVD (usft)	N/S (usft)	E/W (usft)	DLeg (°/100usft)	Build (°/100usft)	Turn (°/100usft)	High to Plan (usft)	Right to Plan (usft)	
8,017.0	2.37	30.10	7,927.6	971.6	296.2	0.02	0.00	0.47	-38.0	-32.5	
8,112.0	2.37	36.43	8,022.5	974.9	298.3	0.28	0.00	6.66	-45.3	-27.9	
8,206.0	2.46	42.06	8,116.4	977.9	300.8	0.27	0.10	5.99	-51.7	-23.1	
8,300.0	2.29	40.74	8,210.3	980.9	303.4	0.19	-0.18	-1.40	-55.1	-24.3	
8,394.0	1.93	45.13	8,304.2	983.4	305.7	0.42	-0.38	4.67	-60.2	-19.9	
8,489.0	1.67	52.25	8,399.2	985.4	308.0	0.36	-0.27	7.49	-65.2	-12.1	
8,583.0	1.49	61.92	8,493.2	986.8	310.1	0.34	-0.19	10.29	-68.9	-0.7	
8,678.0	1.41	68.42	8,588.1	987.8	312.3	0.19	-0.08	6.84	-70.9	7.2	
8,772.0	1.32	76.95	8,682.1	988.5	314.4	0.24	-0.10	9.07	-71.3	17.8	
8,828.0	1.14	81.26	8,738.1	988.7	315.6	0.36	-0.32	7.70	-71.0	23.2	
8,894.0	1.30	117.79	8,804.1	988.4	316.9	1.18	0.24	55.36	-44.5	61.3	
<b>KOP, MD:8894.0', TVD:8804.1',N/S:988.4', E/W:316.9', INC:1.30</b>											
8,898.0	1.32	119.58	8,808.1	988.4	317.0	1.18	0.59	44.64	-42.6	62.6	
8,993.0	12.66	193.49	8,902.3	977.7	315.5	13.01	11.94	77.80	44.0	57.9	
9,086.0	24.97	186.64	8,990.2	948.2	310.8	13.43	13.24	-7.37	27.1	59.2	
9,178.8	30.13	185.35	9,072.4	905.5	306.4	5.59	5.56	-1.39	16.7	55.8	
<b>FTP Crossing, MD:9178.8', TVD:9072.4',N/S:905.5', E/W:306.4', INC:30.13</b>											
9,181.0	30.25	185.32	9,074.3	904.4	306.3	5.59	5.56	-1.17	16.5	55.7	
9,275.0	39.92	184.62	9,151.1	850.6	301.7	10.30	10.29	-0.74	9.2	51.4	
9,370.0	49.59	187.52	9,218.5	784.2	294.5	10.40	10.18	3.05	3.4	44.1	
9,464.0	61.55	188.75	9,271.6	707.6	283.5	12.77	12.72	1.31	-6.5	33.3	
9,559.0	69.20	183.21	9,311.2	621.8	274.6	9.64	8.05	-5.83	-17.8	23.7	
9,653.0	74.13	180.84	9,340.7	532.7	271.5	5.76	5.24	-2.52	-22.2	19.6	
9,747.0	86.26	183.03	9,356.7	440.3	268.3	13.11	12.90	2.33	-24.1	15.8	
9,936.0	93.12	182.15	9,357.7	251.6	259.8	3.66	3.63	-0.47	-26.6	5.8	
10,031.0	93.30	179.61	9,352.4	156.8	258.3	2.68	0.19	-2.67	-32.3	3.7	
10,125.0	85.30	178.38	9,353.5	62.9	260.0	8.61	-8.51	-1.31	-31.4	4.7	



**EOG Resources**

Midland PVA

**Company:** EOG Resources - Midland  
**Project:** Lea County, NM (NAD 83 NME)  
**Site:** Frazier 27 State Com  
**Well:** #102H  
**Wellbore:** OH  
**Design:** OH

**Local Co-ordinate Reference:** Well #102H  
**TVD Reference:** KB = 26' @ 3541.0usft  
**MD Reference:** KB = 26' @ 3541.0usft  
**North Reference:** Grid  
**Survey Calculation Method:** Minimum Curvature  
**Database:** EDM

Survey												
MD (usft)	Inc (°)	Azi (azimuth) (°)	TVD (usft)	N/S (usft)	E/W (usft)	DLeg (°/100usft)	Build (°/100usft)	Turn (°/100usft)	High to Plan (usft)	Right to Plan (usft)		
10,219.0	83.54	177.94	9,362.7	-30.6	263.0	1.93	-1.87	-0.47	-22.5	7.1		
10,314.0	82.75	177.94	9,374.0	-124.9	266.4	0.83	-0.83	0.00	-11.5	9.8		
10,408.0	85.30	178.90	9,383.8	-218.3	268.9	2.90	2.71	1.02	-2.0	11.7		
10,503.0	88.20	180.40	9,389.2	-313.2	269.5	3.44	3.05	1.58	3.1	11.6		
10,597.0	88.46	179.61	9,391.9	-407.1	269.5	0.88	0.28	-0.84	5.5	10.9		
10,691.0	88.46	179.69	9,394.5	-501.1	270.1	0.09	0.00	0.09	7.8	10.9		
10,786.0	90.22	179.87	9,395.6	-596.1	270.4	1.86	1.85	0.19	8.6	10.6		
10,880.0	92.33	181.72	9,393.5	-690.0	269.1	2.98	2.24	1.97	6.2	8.6		
10,974.0	93.83	180.31	9,388.4	-783.9	267.5	2.19	1.60	-1.50	0.9	6.3		
11,068.0	88.72	181.36	9,386.3	-877.8	266.1	5.55	-5.44	1.12	-1.5	4.2		
11,162.0	88.11	179.78	9,388.9	-971.8	265.2	1.80	-0.65	-1.68	0.8	2.6		
11,256.0	88.11	181.28	9,392.0	-1,065.7	264.3	1.59	0.00	1.60	3.6	1.1		
11,350.0	88.90	181.19	9,394.5	-1,159.7	262.3	0.85	0.84	-0.10	5.8	-1.6		
11,444.0	88.55	180.49	9,396.6	-1,253.6	260.9	0.83	-0.37	-0.74	7.6	-3.6		
11,539.0	88.64	178.99	9,398.9	-1,348.6	261.3	1.58	0.09	-1.58	9.6	-3.8		
11,633.0	88.72	178.46	9,401.1	-1,442.5	263.4	0.57	0.09	-0.56	11.5	-2.4		
11,727.0	88.99	177.94	9,402.9	-1,536.5	266.4	0.62	0.29	-0.55	13.1	-0.1		
11,821.0	89.08	178.29	9,404.5	-1,630.4	269.5	0.38	0.10	0.37	14.4	2.3		
11,915.0	86.79	178.82	9,407.9	-1,724.3	271.8	2.50	-2.44	0.56	17.5	4.0		
12,010.0	87.41	177.76	9,412.7	-1,819.1	274.7	1.29	0.65	-1.12	22.0	6.2		
12,104.0	87.67	177.58	9,416.8	-1,913.0	278.5	0.34	0.28	-0.19	25.7	9.4		
12,199.0	87.93	176.88	9,420.4	-2,007.8	283.1	0.79	0.27	-0.74	28.4	13.3		
12,293.0	87.67	175.74	9,424.0	-2,101.5	289.1	1.24	-0.28	-1.21	31.0	18.7		
12,387.0	88.90	177.67	9,426.8	-2,195.3	294.5	2.43	1.31	2.05	32.9	23.4		
12,482.0	91.10	179.61	9,426.8	-2,290.3	296.8	3.09	2.32	2.04	31.9	25.0		
12,576.0	91.80	179.87	9,424.4	-2,384.3	297.2	0.79	0.74	0.28	28.5	24.8		
12,670.0	90.75	179.87	9,422.4	-2,478.2	297.4	1.12	-1.12	0.00	25.5	24.3		



**EOG Resources**

Midland PVA

<b>Company:</b>	EOG Resources - Midland	<b>Local Co-ordinate Reference:</b>	Well #102H
<b>Project:</b>	Lea County, NM (NAD 83 NME)	<b>TVD Reference:</b>	KB = 26' @ 3541.0usft
<b>Site:</b>	Frazier 27 State Com	<b>MD Reference:</b>	KB = 26' @ 3541.0usft
<b>Well:</b>	#102H	<b>North Reference:</b>	Grid
<b>Wellbore:</b>	OH	<b>Survey Calculation Method:</b>	Minimum Curvature
<b>Design:</b>	OH	<b>Database:</b>	EDM

Survey												
MD (usft)	Inc (°)	Azi (azimuth) (°)	TVD (usft)	N/S (usft)	E/W (usft)	DLeg (°/100usft)	Build (°/100usft)	Turn (°/100usft)	High to Plan (usft)	Right to Plan (usft)		
12,764.0	88.90	181.80	9,422.6	-2,572.2	296.0	2.84	-1.97	2.05	24.8	22.3		
12,859.0	89.25	180.66	9,424.2	-2,667.2	294.0	1.26	0.37	-1.20	25.4	19.6		
12,953.0	89.60	181.36	9,425.1	-2,761.2	292.4	0.83	0.37	0.74	25.4	17.2		
13,047.0	85.74	181.36	9,428.9	-2,855.0	290.1	4.11	-4.11	0.00	28.2	14.4		
13,142.0	85.38	181.28	9,436.3	-2,949.7	287.9	0.39	-0.38	-0.08	34.6	11.5		
13,236.0	86.26	181.80	9,443.1	-3,043.4	285.4	1.09	0.94	0.55	40.5	8.3		
13,330.0	89.60	181.72	9,446.5	-3,137.3	282.5	3.55	3.55	-0.09	42.9	4.8		
13,425.0	90.75	180.92	9,446.2	-3,232.3	280.3	1.47	1.21	-0.84	41.7	1.9		
13,519.0	91.63	180.40	9,444.3	-3,326.3	279.3	1.09	0.94	-0.55	38.8	0.2		
13,614.0	90.84	180.22	9,442.2	-3,421.2	278.8	0.85	-0.83	-0.19	35.7	-1.0		
13,708.0	91.10	179.78	9,440.7	-3,515.2	278.8	0.54	0.28	-0.47	33.2	-1.6		
13,803.0	87.41	178.29	9,441.9	-3,610.2	280.4	4.19	-3.88	-1.57	33.5	-0.7		
13,897.0	86.09	177.58	9,447.2	-3,704.0	283.7	1.59	-1.40	-0.76	37.8	2.0		
13,991.0	87.05	176.71	9,452.8	-3,797.7	288.4	1.38	1.02	-0.93	42.5	6.1		
14,085.0	88.11	177.32	9,456.8	-3,891.5	293.3	1.30	1.13	0.65	45.3	10.3		
14,180.0	86.97	177.41	9,460.9	-3,986.3	297.7	1.20	-1.20	0.09	47.3	14.0		
14,274.0	88.64	178.38	9,464.5	-4,080.2	301.1	2.05	1.78	1.03	48.8	16.8		
14,369.0	90.66	179.96	9,465.1	-4,175.1	302.5	2.70	2.13	1.66	47.3	17.5		
14,462.0	90.75	179.17	9,463.9	-4,268.1	303.2	0.85	0.10	-0.85	44.1	17.5		
14,556.0	90.66	176.79	9,462.8	-4,362.0	306.5	2.53	-0.10	-2.53	40.9	20.2		
14,650.0	88.81	179.34	9,463.2	-4,456.0	309.7	3.35	-1.97	2.71	39.3	22.7		
14,776.0	88.72	182.77	9,465.9	-4,581.9	307.4	2.72	-0.07	2.72	39.3	19.4		
14,839.0	90.40	181.80	9,466.4	-4,644.9	304.8	3.08	2.67	-1.54	38.3	16.5		
14,933.0	92.92	178.64	9,463.7	-4,738.8	304.5	4.30	2.68	-3.36	33.5	15.5		
15,028.0	92.42	178.11	9,459.3	-4,833.7	307.2	0.77	-0.53	-0.56	27.0	17.5		
15,122.0	92.77	177.58	9,455.0	-4,927.5	310.7	0.68	0.37	-0.56	20.7	20.4		
15,216.0	93.30	177.50	9,450.0	-5,021.3	314.7	0.57	0.56	-0.09	13.7	23.8		



**EOG Resources**

Midland PVA

**Company:** EOG Resources - Midland  
**Project:** Lea County, NM (NAD 83 NME)  
**Site:** Frazier 27 State Com  
**Well:** #102H  
**Wellbore:** OH  
**Design:** OH

**Local Co-ordinate Reference:** Well #102H  
**TVD Reference:** KB = 26' @ 3541.0usft  
**MD Reference:** KB = 26' @ 3541.0usft  
**North Reference:** Grid  
**Survey Calculation Method:** Minimum Curvature  
**Database:** EDM

Survey												
MD (usft)	Inc (°)	Azi (azimuth) (°)	TVD (usft)	N/S (usft)	E/W (usft)	DLeg (°/100usft)	Build (°/100usft)	Turn (°/100usft)	High to Plan (usft)	Right to Plan (usft)		
15,310.0	92.15	178.64	9,445.6	-5,115.1	317.9	1.72	-1.22	1.21	7.1	26.3		
15,404.0	91.10	179.61	9,442.9	-5,209.1	319.3	1.52	-1.12	1.03	2.4	27.0		
15,498.0	91.71	179.69	9,440.6	-5,303.0	319.9	0.65	0.65	0.09	-2.0	27.0		
15,592.0	90.75	180.22	9,438.6	-5,397.0	320.0	1.17	-1.02	0.56	-6.1	26.4		
15,686.0	89.78	180.66	9,438.1	-5,491.0	319.3	1.13	-1.03	0.47	-8.6	25.0		
15,780.0	90.31	180.84	9,438.1	-5,585.0	318.0	0.60	0.56	0.19	-10.7	23.1		
15,875.0	90.22	181.98	9,437.6	-5,680.0	315.7	1.20	-0.09	1.20	-13.3	20.1		
15,969.0	91.28	181.80	9,436.4	-5,773.9	312.6	1.14	1.13	-0.19	-16.6	16.3		
16,063.0	92.15	182.59	9,433.6	-5,867.8	309.0	1.25	0.93	0.84	-21.4	12.1		
16,157.0	86.97	179.69	9,434.3	-5,961.7	307.1	6.31	-5.51	-3.09	-22.8	9.6		
16,252.0	86.79	178.64	9,439.5	-6,056.6	308.5	1.12	-0.19	-1.11	-19.7	10.3		
16,346.0	88.90	180.57	9,443.0	-6,150.5	309.2	3.04	2.24	2.05	-18.2	10.3		
16,440.0	89.60	180.57	9,444.2	-6,244.5	308.2	0.74	0.74	0.00	-19.1	8.7		
16,535.0	90.48	180.75	9,444.2	-6,339.5	307.1	0.95	0.93	0.19	-21.2	6.9		
16,627.0	90.40	180.40	9,443.5	-6,431.5	306.2	0.39	-0.09	-0.38	-24.0	5.3		
16,721.0	90.40	180.31	9,442.8	-6,525.5	305.6	0.10	0.00	-0.10	-26.7	4.1		
16,815.0	90.22	180.40	9,442.3	-6,619.5	305.0	0.21	-0.19	0.10	-29.3	2.8		
16,910.0	90.57	179.43	9,441.6	-6,714.5	305.2	1.09	0.37	-1.02	-32.0	2.3		
17,004.0	90.22	179.08	9,441.0	-6,808.4	306.4	0.53	-0.37	-0.37	-34.8	2.9		
17,098.0	90.22	179.08	9,440.6	-6,902.4	307.9	0.00	0.00	0.00	-37.2	3.7		
17,192.0	88.64	179.87	9,441.6	-6,996.4	308.8	1.88	-1.68	0.84	-38.3	3.9		
17,286.0	87.49	179.52	9,444.7	-7,090.4	309.3	1.28	-1.22	-0.37	-36.9	3.8		
17,380.0	88.72	180.75	9,447.8	-7,184.3	309.0	1.85	1.31	1.31	-35.0	2.9		
17,474.0	87.32	179.61	9,451.1	-7,278.2	308.7	1.92	-1.49	-1.21	-33.0	1.9		
17,568.0	88.11	178.82	9,454.8	-7,372.2	310.0	1.19	0.84	-0.84	-30.4	2.6		
17,663.0	87.05	178.20	9,458.9	-7,467.0	312.5	1.29	-1.12	-0.65	-27.6	4.4		
17,757.0	84.77	176.44	9,465.6	-7,560.7	316.9	3.06	-2.43	-1.87	-22.1	8.1		



**EOG Resources**

Midland PVA

**Company:** EOG Resources - Midland  
**Project:** Lea County, NM (NAD 83 NME)  
**Site:** Frazier 27 State Com  
**Well:** #102H  
**Wellbore:** OH  
**Design:** OH

**Local Co-ordinate Reference:** Well #102H  
**TVD Reference:** KB = 26' @ 3541.0usft  
**MD Reference:** KB = 26' @ 3541.0usft  
**North Reference:** Grid  
**Survey Calculation Method:** Minimum Curvature  
**Database:** EDM

Survey												
MD (usft)	Inc (°)	Azi (azimuth) (°)	TVD (usft)	N/S (usft)	E/W (usft)	DLeg (°/100usft)	Build (°/100usft)	Turn (°/100usft)	High to Plan (usft)	Right to Plan (usft)		
17,852.0	88.11	180.31	9,471.5	-7,655.4	319.6	5.37	3.52	4.07	-17.4	10.1		
17,946.0	91.28	180.75	9,472.0	-7,749.4	318.7	3.40	3.37	0.47	-18.1	8.6		
18,040.0	92.15	181.19	9,469.1	-7,843.4	317.1	1.04	0.93	0.47	-22.2	6.4		
18,134.0	90.40	180.22	9,467.1	-7,937.3	316.0	2.13	-1.86	-1.03	-25.4	4.6		
18,229.0	88.72	180.40	9,467.8	-8,032.3	315.4	1.78	-1.77	0.19	-25.9	3.4		
18,323.0	88.02	179.78	9,470.5	-8,126.3	315.3	0.99	-0.74	-0.66	-24.5	2.6		
18,417.0	87.14	179.43	9,474.4	-8,220.2	315.9	1.01	-0.94	-0.37	-21.7	2.6		
18,512.0	91.54	179.17	9,475.5	-8,315.2	317.1	4.64	4.63	-0.27	-21.8	3.1		
18,606.0	93.21	179.17	9,471.6	-8,409.1	318.5	1.78	1.78	0.00	-26.9	3.8		
18,700.0	93.21	179.43	9,466.4	-8,502.9	319.6	0.28	0.00	0.28	-33.4	4.3		
18,794.0	93.21	179.34	9,461.1	-8,596.8	320.6	0.10	0.00	-0.10	-39.8	4.6		
18,888.0	89.69	180.31	9,458.7	-8,690.7	320.9	3.88	-3.74	1.03	-43.4	4.3		
18,982.0	87.49	179.78	9,461.0	-8,784.7	320.8	2.41	-2.34	-0.56	-42.3	3.5		
19,076.0	87.49	180.49	9,465.2	-8,878.6	320.6	0.75	0.00	0.76	-39.4	2.6		
19,171.0	87.14	180.49	9,469.6	-8,973.5	319.8	0.37	-0.37	0.00	-36.1	1.2		
19,265.0	86.09	179.52	9,475.2	-9,067.3	319.8	1.52	-1.12	-1.03	-31.8	0.5		
19,359.0	86.35	178.90	9,481.3	-9,161.1	321.1	0.71	0.28	-0.66	-26.8	1.1		
<b>Last MWD Survey (MD=19359.0')</b>												
19,425.0	86.35	178.90	9,485.6	-9,227.0	322.3	0.00	0.00	0.00	-23.4	1.9		
<b>Projection to Bit (MD=19425.0')</b>												



**EOG Resources**

Midland PVA

<b>Company:</b>	EOG Resources - Midland	<b>Local Co-ordinate Reference:</b>	Well #102H
<b>Project:</b>	Lea County, NM (NAD 83 NME)	<b>TVD Reference:</b>	KB = 26' @ 3541.0usft
<b>Site:</b>	Frazier 27 State Com	<b>MD Reference:</b>	KB = 26' @ 3541.0usft
<b>Well:</b>	#102H	<b>North Reference:</b>	Grid
<b>Wellbore:</b>	OH	<b>Survey Calculation Method:</b>	Minimum Curvature
<b>Design:</b>	OH	<b>Database:</b>	EDM

Design Annotations				
Measured Depth (usft)	Vertical Depth (usft)	Local Coordinates		Comment
		+N/-S (usft)	+E/-W (usft)	
8,894.0	8,804.1	988.4	316.9	KOP, MD:8894.0', TVD:8804.1',N/S:988.4', E/W:316.9', INC:1.30
9,178.8	9,072.4	905.5	306.4	FTP Crossing, MD:9178.8', TVD:9072.4',N/S:905.5', E/W:306.4', INC:30.13
19,359.0	9,481.3	-9,161.1	321.1	Last MWD Survey (MD=19359.0')
19,425.0	9,485.6	-9,227.0	322.3	Projection to Bit (MD=19425.0')

Checked By: \_\_\_\_\_ Approved By: \_\_\_\_\_ Date: \_\_\_\_\_

I CERTIFY THIS SURVEY TO BE TRUE AND CORRECT TO THE BEST OF MY BELIEF AND KNOWLEDGE.  
 KAY MADDOX 06/03/2021



# Lea County, NM (NAD 83 NME)

## Frazier 27 State Com #102H

### Plan #1

#### PROJECT DETAILS: Lea County, NM (NAD 83 NME)

Geodetic System: US State Plane 1983  
 Datum: North American Datum 1983  
 Ellipsoid: GRS 1980  
 Zone: New Mexico Eastern Zone  
 System Datum: Mean Sea Level

#### WELL DETAILS: #102H

KB = 26' @ 3541.0usft  
 Northing 434845.00 Easting 780861.00 Latitude 32° 11' 35.145 N Longitude 103° 33' 32.509 W

Azimuths to Grid North  
 True North: -0.41°  
 Magnetic North: 6.19°  
 Magnetic Field  
 Strength: 47536.4nT  
 Dip Angle: 59.89°  
 Date: 11/23/2020  
 Model: IGRF2020

To convert a Magnetic Direction to a Grid Direction, Add 6.19°  
 To convert a Magnetic Direction to a True Direction, Add 6.60° East  
 To convert a True Direction to a Grid Direction, Subtract 0.41°

#### SECTION DETAILS

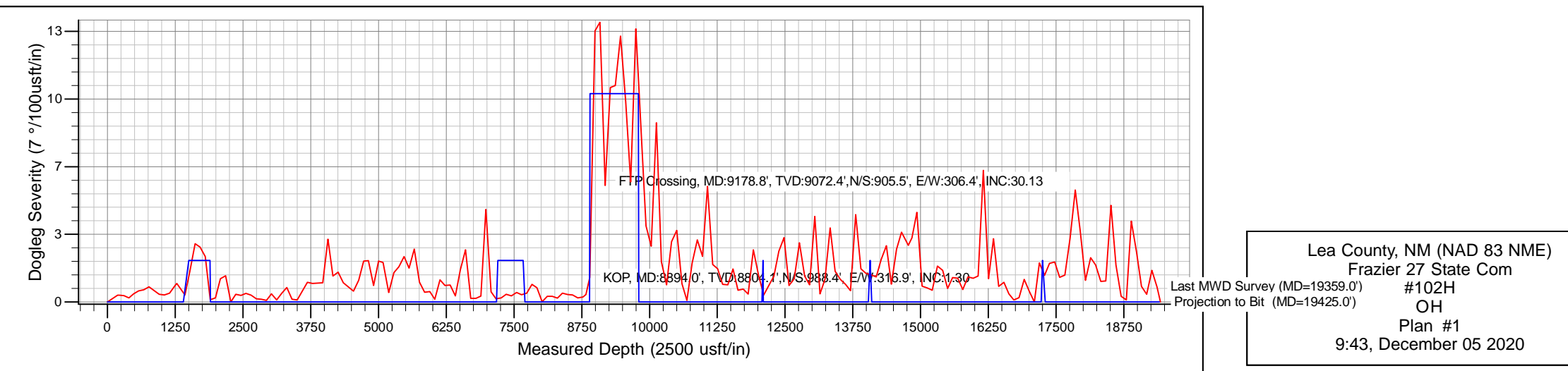
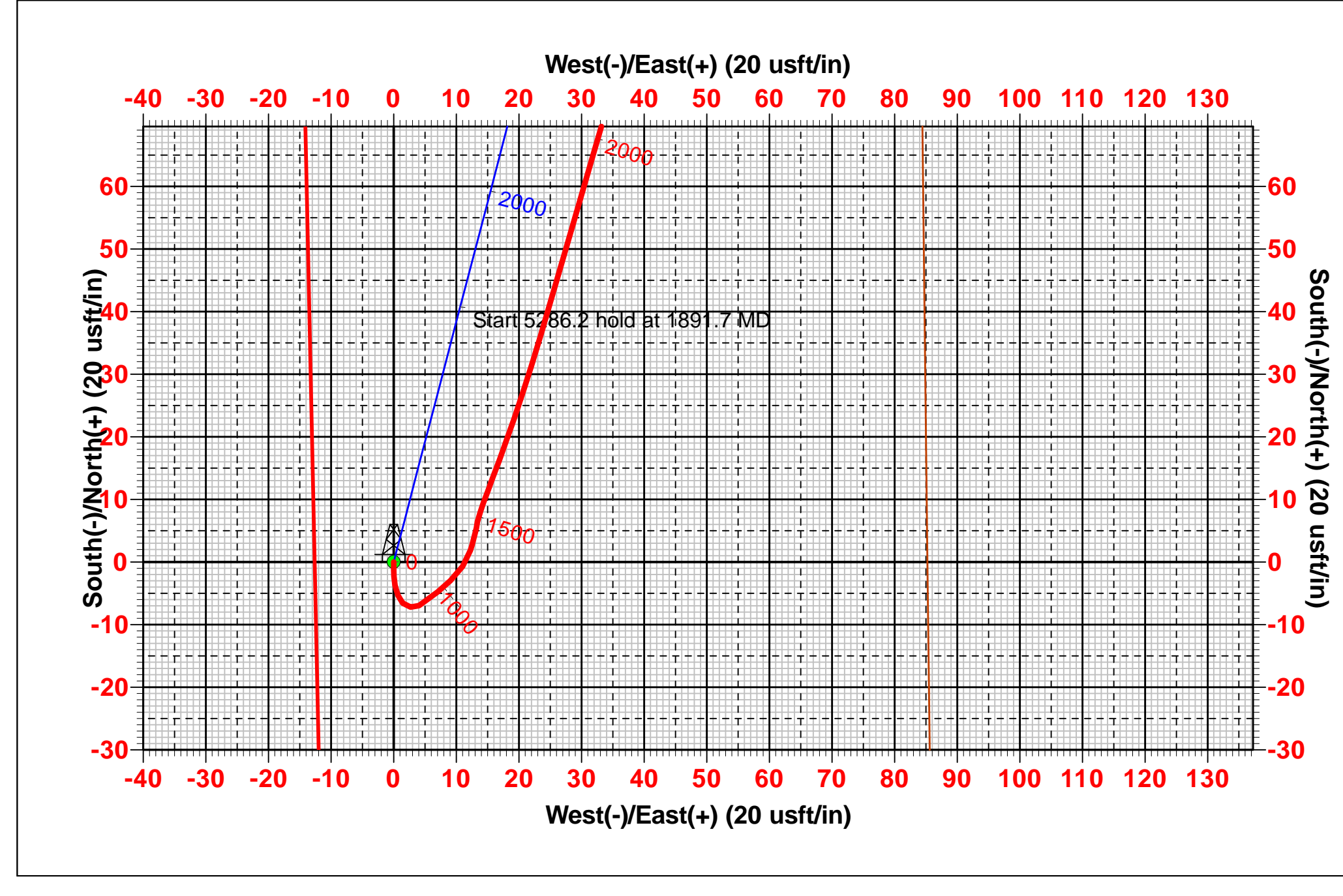
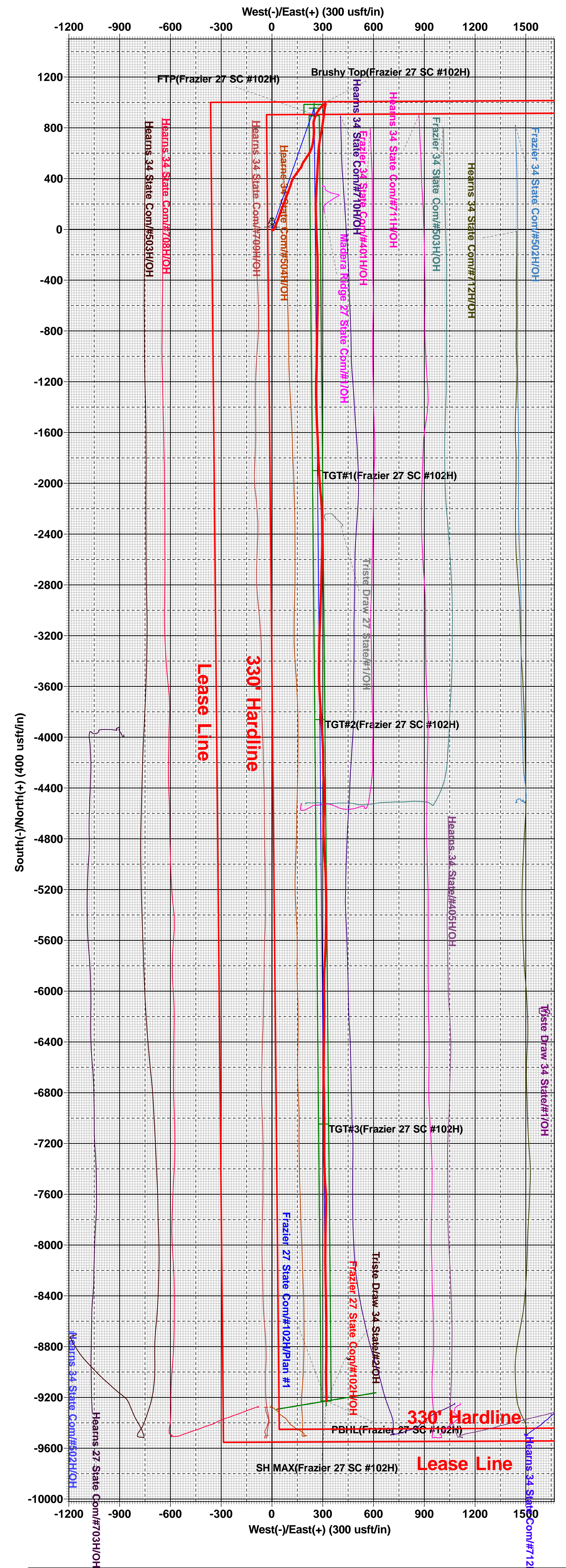
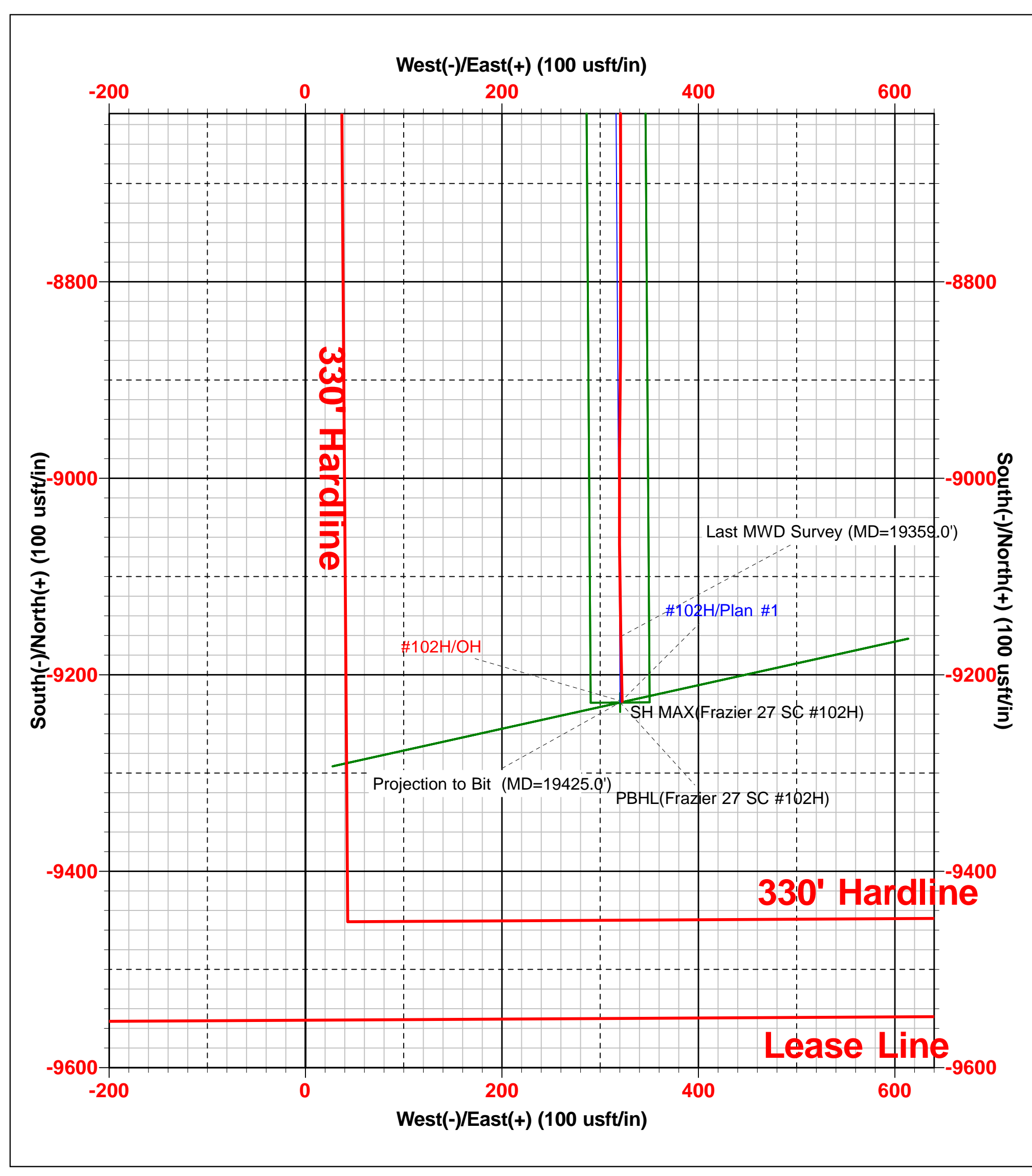
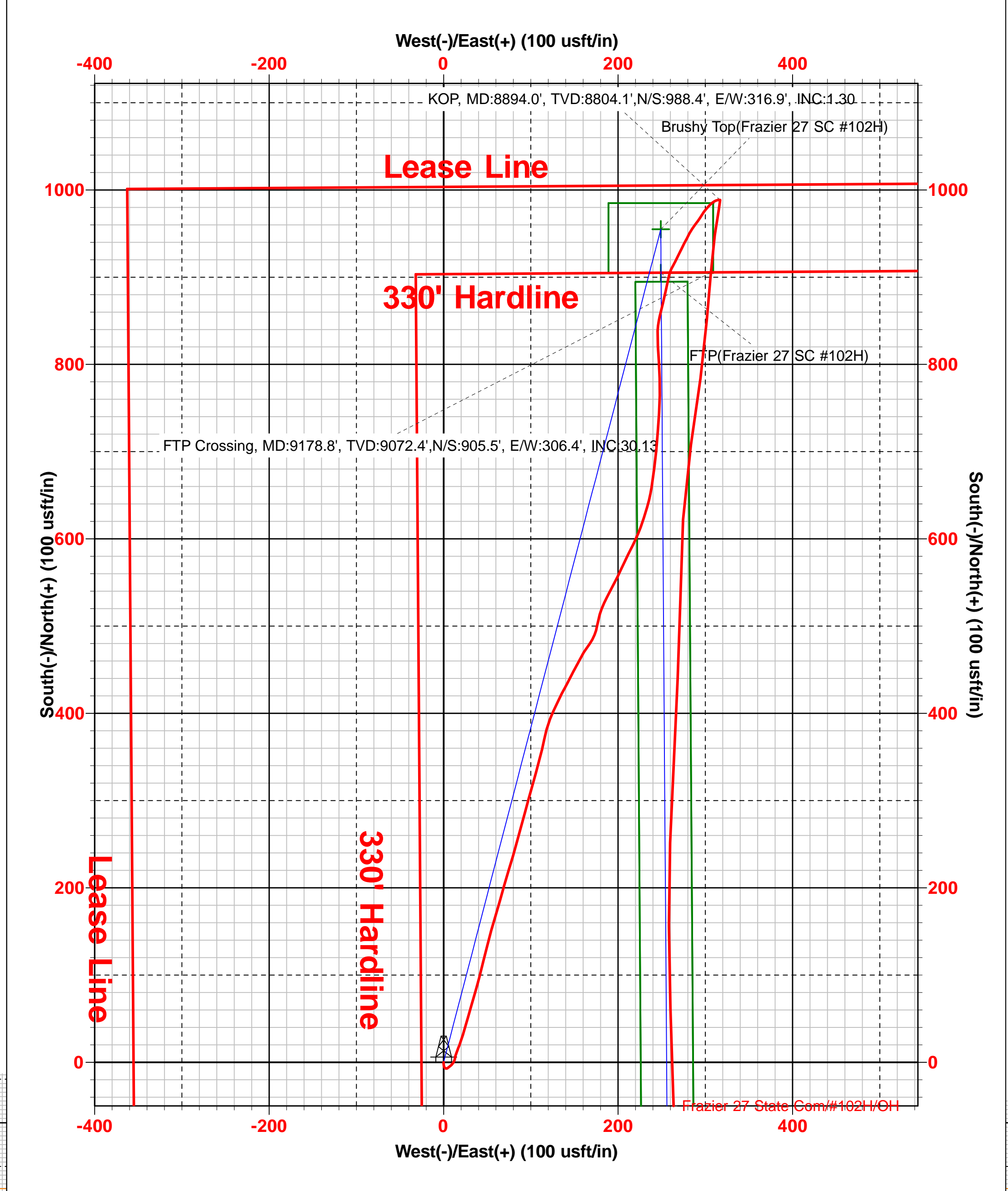
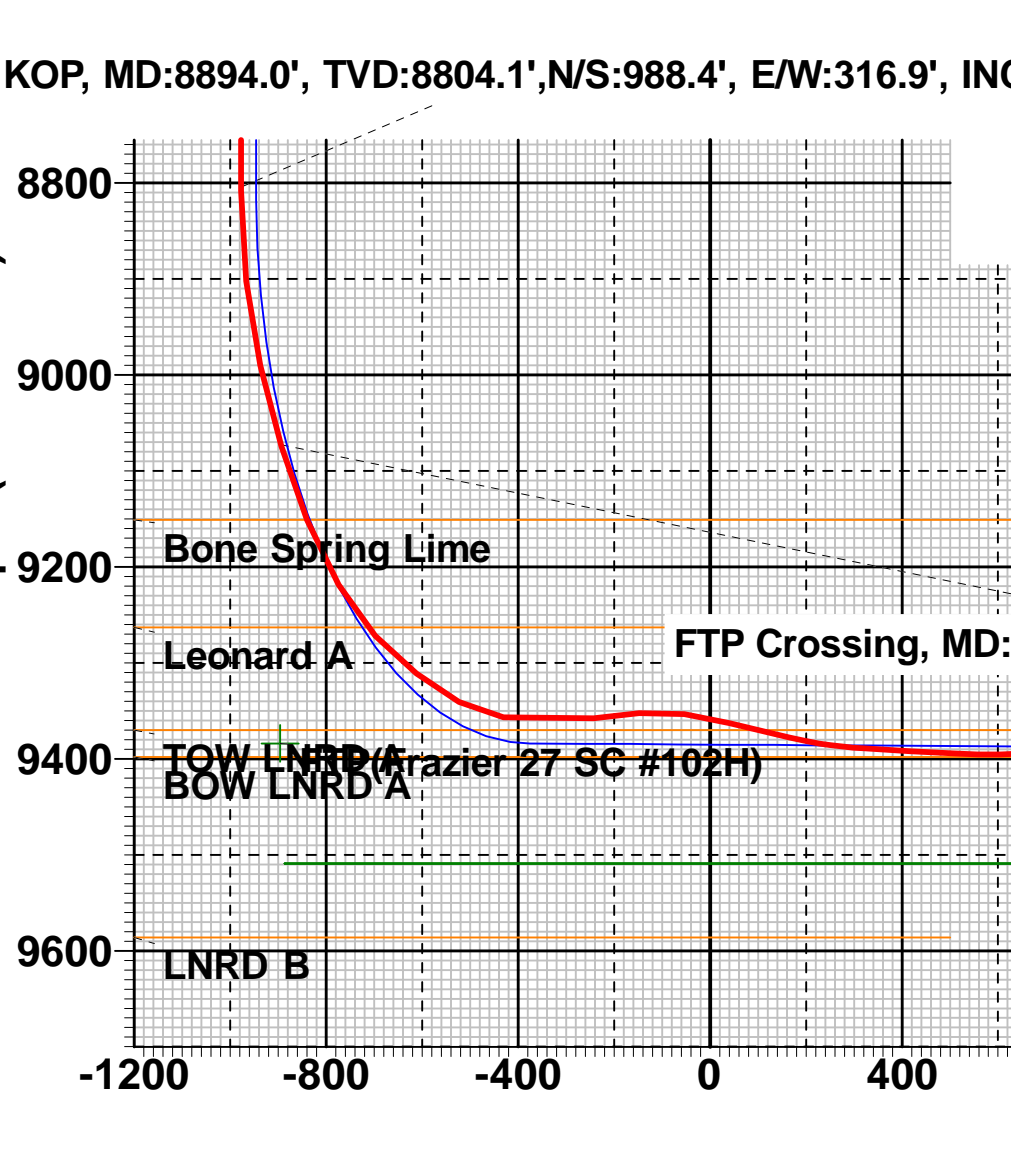
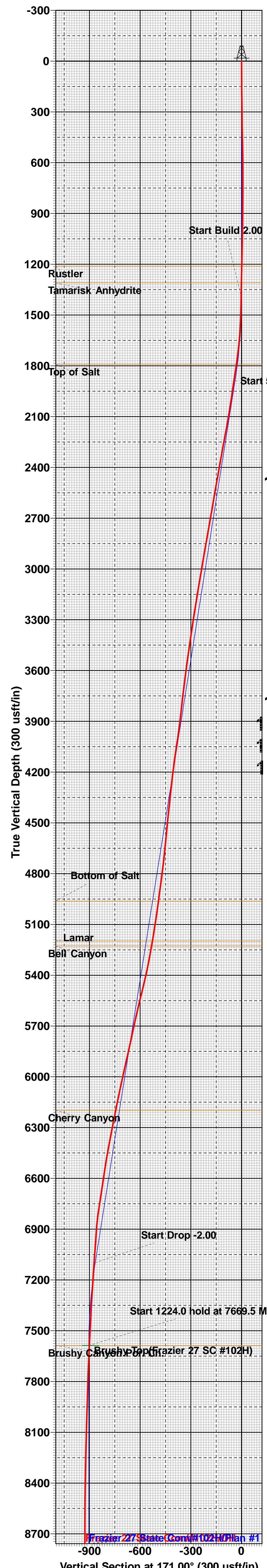
Sec	MD	Inc	Azi	TVD	+N-S	+E-W	Dleg	TFace	VSect	Target
1	0.0	0.00	0.00	0.0	0.0	0.0	0.00	0.00	0.0	
2	1400.0	0.00	0.00	1400.0	0.0	0.0	0.00	0.00	0.0	
3	1891.7	9.83	14.61	1889.2	40.7	10.6	2.00	14.61	-40.3	
4	7177.8	9.83	14.61	7097.8	914.3	238.4	0.00	0.00	-905.5	
5	7669.5	0.00	0.00	7587.0	955.0	249.0	2.00	180.00	-945.8	Brushy Top(Frazier 27 SC #102H)
6	8893.5	0.00	0.00	8811.0	955.0	249.0	0.00	0.00	-945.8	
7	9791.7	89.82	179.60	9384.0	383.8	253.0	10.00	179.60	-374.8	
8	12075.5	89.82	179.60	9391.0	-1899.9	269.0	0.00	0.00	1908.1	TGT#1(Frazier 27 SC #102H)
9	12096.0	89.41	179.60	9391.1	-1920.4	269.2	2.00	-180.00	1928.6	TGT#2(Frazier 27 SC #102H)
10	14036.3	89.41	179.60	9411.0	-3860.6	282.8	0.00	0.00	3868.1	TGT#3(Frazier 27 SC #102H)
11	14070.1	88.74	179.60	9411.5	-3894.4	283.1	2.00	180.00	3901.9	
12	17223.3	88.74	179.60	9481.0	-7046.7	305.2	0.00	0.00	7053.0	
13	17249.8	89.27	179.60	9481.5	-7073.2	305.4	2.00	0.32	7079.5	
14	19405.0	89.27	179.60	9509.0	-9228.2	320.4	0.00	0.00	9233.8	PBHL(Frazier 27 SC #102H)

#### CASING DETAILS

No casing data is available

#### WELLBORE TARGET DETAILS (MAP CO-ORDINATES)

Name	TVD	+N-S	+E-W	Northing	Easting
Brushy Top(Frazier 27 SC #102H)	7587.0	955.0	249.0	435800.00	781110.00
FTP(Frazier 27 SC #102H)	9384.0	905.0	249.0	435750.00	781110.00
TGT#1(Frazier 27 SC #102H)	9391.0	-1899.9	269.0	432945.10	781130.05
TGT#2(Frazier 27 SC #102H)	9411.0	-3860.6	282.8	430984.40	781143.82
TGT#3(Frazier 27 SC #102H)	9481.0	-7046.7	305.2	427798.30	781166.19
PBHL(Frazier 27 SC #102H)	9509.0	-9228.2	320.4	425616.80	781181.40
SH MAX(Frazier 27 SC #102H)	9509.0	-9228.2	320.4	425616.80	781181.40



Intent  As Drilled

API #

Operator Name:	Property Name:	Well Number
----------------	----------------	-------------

Kick Off Point (KOP)

UL	Section	Township	Range	Lot	Feet	From N/S	Feet	From E/W	County
Latitude					Longitude				NAD

First Take Point (FTP)

UL	Section	Township	Range	Lot	Feet	From N/S	Feet	From E/W	County
Latitude					Longitude				NAD

Last Take Point (LTP)

UL	Section	Township	Range	Lot	Feet	From N/S	Feet	From E/W	County
Latitude					Longitude				NAD

Is this well the defining well for the Horizontal Spacing Unit?

Is this well an infill well?

If infill is yes please provide API if available, Operator Name and well number for Defining well for Horizontal Spacing Unit.

API #

Operator Name:	Property Name:	Well Number
----------------	----------------	-------------

KZ 06/29/2018



Office
District I - (575) 393-6161
1625 N. French Dr., Hobbs, NM 88240
District II - (575) 748-1283
811 S. First St., Artesia, NM 88210
District III - (505) 334-6178
1000 Rio Brazos Rd., Aztec, NM 87410
District IV - (505) 476-3460
1220 S. St. Francis Dr., Santa Fe, NM 87505

State of New Mexico
Energy, Minerals and Natural Resources

Form C-103
Revised July 18, 2013

OIL CONSERVATION DIVISION
1220 South St. Francis Dr.
Santa Fe, NM 87505

WELL API NO. 30-025-46771
5. Indicate Type of Lease STATE [X] FEE [ ]
6. State Oil & Gas Lease No.
7. Lease Name or Unit Agreement Name FRAZIER 27 STATE COM
8. Well Number 102H
9. OGRID Number 7377
10. Pool name or Wildcat TRISTE DRAW; BONE SPRING, EAST

SUNDRY NOTICES AND REPORTS ON WELLS
(DO NOT USE THIS FORM FOR PROPOSALS TO DRILL OR TO DEEPEN OR PLUG BACK TO A DIFFERENT RESERVOIR. USE "APPLICATION FOR PERMIT" (FORM C-101) FOR SUCH PROPOSALS.)
1. Type of Well: Oil Well [X] Gas Well [ ] Other [ ]
2. Name of Operator EOG RESOURCES INC
3. Address of Operator PO BOX 2267 MIDLAND, TX 79702
4. Well Location Unit Letter B : 1003 feet from the NORTH line and 2285 feet from the EAST line
Section 27 Township 24S Range 33E NMPM County LEA
11. Elevation (Show whether DR, RKB, RT, GR, etc.) 3515' GR

12. Check Appropriate Box to Indicate Nature of Notice, Report or Other Data

NOTICE OF INTENTION TO:
PERFORM REMEDIAL WORK [ ] PLUG AND ABANDON [ ]
TEMPORARILY ABANDON [ ] CHANGE PLANS [ ]
PULL OR ALTER CASING [ ] MULTIPLE COMPL [ ]
DOWNHOLE COMMINGLE [ ]
CLOSED-LOOP SYSTEM [ ]
OTHER: [ ]
SUBSEQUENT REPORT OF:
REMEDIAL WORK [ ] ALTERING CASING [ ]
COMMENCE DRILLING OPNS. [ ] P AND A [ ]
CASING/CEMENT JOB [ ]
OTHER: Completion [X]

13. Describe proposed or completed operations. (Clearly state all pertinent details, and give pertinent dates, including estimated date of starting any proposed work). SEE RULE 19.15.7.14 NMAC. For Multiple Completions: Attach wellbore diagram of proposed completion or recompletion.

- 12/05/2020 Rig released
01/04/2021 Test void to 5000 psi, seals & flanges to 8500 psi
03/29/2021 Begin perf & frac
04/13/2021 Finish 35 stages perf & frac, 9660 - 19,401' 2064 3 1/8" shots 23,826,327 lbs proppant + 468,125 bbls load fluid
04/16/2021 Drilled out plugs and clean out wellbore
05/17/2021 Opened well to flowback - Date of First Production

Spud Date: 11/11/2020

Rig Release Date: 12/05/2020

I hereby certify that the information above is true and complete to the best of my knowledge and belief.

SIGNATURE KAY MADDOX TITLE Senior Regulatory Specialist DATE 06/08/2021

Type or print name Kay Maddox E-mail address: kay\_maddox@eogresources.com PHONE: 432-638-8475

For State Use Only

APPROVED BY: TITLE DATE

Conditions of Approval (if any):

Submit To Appropriate District Office Two Copies District I 1625 N. French Dr., Hobbs, NM 88240 District II 811 S. First St., Artesia, NM 88210 District III 1000 Rio Brazos Rd., Aztec, NM 87410 District IV 1220 S. St. Francis Dr., Santa Fe, NM 87505	State of New Mexico Energy, Minerals and Natural Resources  Oil Conservation Division 1220 South St. Francis Dr. Santa Fe, NM 87505	Form C-105 Revised August 1, 2011
		1. WELL API NO. <b>30-025-46771</b>
		2. Type of Lease <input checked="" type="checkbox"/> STATE <input type="checkbox"/> FEE <input type="checkbox"/> FED/INDIAN
		3. State Oil & Gas Lease No.

**WELL COMPLETION OR RECOMPLETION REPORT AND LOG**

4. Reason for filing: <input checked="" type="checkbox"/> <b>COMPLETION REPORT</b> (Fill in boxes #1 through #31 for State and Fee wells only)  <input type="checkbox"/> <b>C-144 CLOSURE ATTACHMENT</b> (Fill in boxes #1 through #9, #15 Date Rig Released and #32 and/or #33; attach this and the plat to the C-144 closure report in accordance with 19.15.17.13.K NMAC)	5. Lease Name or Unit Agreement Name <b>FRAZIER 27 STATE COM</b>  6. Well Number: <b>102H</b>
---	---

7. Type of Completion:  
 NEW WELL     WORKOVER     DEEPENING     PLUGBACK     DIFFERENT RESERVOIR     OTHER \_\_\_\_\_

8. Name of Operator    **EOG RESOURCES INC**    9. OGRID    **7377**

10. Address of Operator    **PO BOX 2267 MIDLAND, TEXAS 79702**    11. Pool name or Wildcat  
**TRISTE DRAW; BONE SPRING, EAST**

12. Location	Unit Ltr	Section	Township	Range	Lot	Feet from the	N/S Line	Feet from the	E/W Line	County
<b>Surface:</b>	B	27	24S	33E		1003'	NORTH	2285'	EAST	LEA
<b>BH:</b>	O	34	24S	33E		321'	SOUTH	2028'	EAST	LEA

13. Date Spudded <b>11/11/2020</b>	14. Date T.D. Reached <b>12/04/2020</b>	15. Date Rig Released <b>12/05/2020</b>	16. Date Completed (Ready to Produce) <b>05/17/2021</b>	17. Elevations (DF and RKB, RT, GR, etc.) <b>3515' GL</b>
18. Total Measured Depth of Well <b>MD 19,425' TVD 9485'</b>	19. Plug Back Measured Depth <b>MD 19,401' TVD 9485'</b>	20. Was Directional Survey Made? <b>YES</b>	21. Type Electric and Other Logs Run <b>None</b>	

22. Producing Interval(s), of this completion - Top, Bottom, Name  
**BONE SPRING 9660 -19,401'**

**23. CASING RECORD (Report all strings set in well)**

CASING SIZE	WEIGHT LB./FT.	DEPTH SET	HOLE SIZE	CEMENTING RECORD	AMOUNT PULLED
13 3/8"	54.5# J-55	1335'	17 1/2"	1090 CL C/CIRC	
9 5/8"	40# J-55	5133'	12 1/4"	1420 CL C/CIRC	
5 1/2"	20# ECP 110	19,410'	8 1/2"	2675 CL C & H/TOC	2200' CBL

24. LINER RECORD				25. TUBING RECORD			
SIZE	TOP	BOTTOM	SACKS CEMENT	SCREEN	SIZE	DEPTH SET	PACKER SET

26. Perforation record (interval, size, and number)  <b>9660 - 19,401'    3 1/8", 2064 holes</b>	27. ACID, SHOT, FRACTURE, CEMENT, SQUEEZE, ETC. DEPTH INTERVAL    AMOUNT AND KIND MATERIAL USED <b>9660 - 19,401'    FRAC W/23,826,327 lbs proppant,468,125 bbls load fld</b>
--	---

**28. PRODUCTION**

Date First Production <b>05/17/2021</b>	Production Method ( <i>Flowing, gas lift, pumping - Size and type pump</i> ) <b>Flowing</b>	Well Status ( <i>Prod. or Shut-in</i> ) <b>Producing</b>
--	--	---

Date of Test	Hours Tested	Choke Size	Prod'n For Test Period	Oil - Bbl	Gas - MCF	Water - Bbl.	Gas - Oil Ratio
<b>05/27/2021</b>	<b>24</b>	<b>60</b>		<b>3636</b>	<b>6350</b>	<b>3998</b>	<b>1747</b>

Flow Tubing Press.	Casing Pressure	Calculated 24-Hour Rate	Oil - Bbl.	Gas - MCF	Water - Bbl.	Oil Gravity - API - ( <i>Corr.</i> )
	<b>924</b>					<b>44</b>

29. Disposition of Gas (*Sold, used for fuel, vented, etc.*)    **SOLD**    30. Test Witnessed By

31. List Attachments  
**C-102, C-104, C-103, Directional Survey, H spacing**

32. If a temporary pit was used at the well, attach a plat with the location of the temporary pit.

33. If an on-site burial was used at the well, report the exact location of the on-site burial:

Latitude \_\_\_\_\_ Longitude \_\_\_\_\_ NAD 1927 1983

*I hereby certify that the information shown on both sides of this form is true and complete to the best of my knowledge and belief*

Printed  
 Signature    **Kay Maddox**    Name    **Kay Maddox**    Title    **Senior Regulatory Specialist**    Date    **06/08/2021**  
 E-mail Address    **kay\_maddox@eogresources.com**

# INSTRUCTIONS

This form is to be filed with the appropriate District Office of the Division not later than 20 days after the completion of any newly-drilled or deepened well and not later than 60 days after completion of closure. When submitted as a completion report, this shall be accompanied by one copy of all electrical and radio-activity logs run on the well and a summary of all special tests conducted, including drill stem tests. All depths reported shall be measured depths. In the case of directionally drilled wells, true vertical depths shall also be reported. For multiple completions, items 11, 12 and 26-31 shall be reported for each zone.

## INDICATE FORMATION TOPS IN CONFORMANCE WITH GEOGRAPHICAL SECTION OF STATE

Southeastern New Mexico		Northwestern New Mexico	
T. Anhy <u>Rustler 1212'</u>	T. Canyon <u>Brushy 7597'</u>	T. Ojo Alamo	T. Penn A"
T. Salt <u>1797'</u>	T. Strawn	T. Kirtland	T. Penn. "B"
B. Salt <u>4967'</u>	T. Atoka	T. Fruitland	T. Penn. "C"
T. Yates	T. Miss	T. Pictured Cliffs	T. Penn. "D"
T. 7 Rivers	T. Devonian	T. Cliff House	T. Leadville
T. Queen	T. Silurian	T. Menefee	T. Madison
T. Grayburg	T. Montoya	T. Point Lookout	T. Elbert
T. San Andres	T. Simpson	T. Mancos	T. McCracken
T. Glorieta	T. McKee	T. Gallup	T. Ignacio Otzte
T. Paddock	T. Ellenburger	Base Greenhorn	T. Granite
T. Blinebry	T. Gr. Wash	T. Dakota	
T. Tubb	T. Delaware Sand	T. Morrison	
T. Drinkard	T. Bone Springs	T. Todilto	
T. Abo	T. <u>1st BS Sand 9287'</u>	T. Entrada	
T. Wolfcamp	T.	T. Wingate	
T. Penn	T.	T. Chinle	
T. Cisco (Bough C)	T.	T. Permian	

### OIL OR GAS SANDS OR ZONES

No. 1, from.....to.....  
 No. 2, from.....to.....

No. 3, from.....to.....  
 No. 4, from.....to.....

### IMPORTANT WATER SANDS

Include data on rate of water inflow and elevation to which water rose in hole.

No. 1, from.....to.....feet.....  
 No. 2, from.....to.....feet.....  
 No. 3, from.....to.....feet.....

## LITHOLOGY RECORD (Attach additional sheet if necessary)

From	To	Thickness In Feet	Lithology	From	To	Thickness In Feet	Lithology

**District I**  
 1625 N. French Dr., Hobbs, NM 88240  
 Phone:(575) 393-6161 Fax:(575) 393-0720

**District II**  
 811 S. First St., Artesia, NM 88210  
 Phone:(575) 748-1283 Fax:(575) 748-9720

**District III**  
 1000 Rio Brazos Rd., Aztec, NM 87410  
 Phone:(505) 334-6178 Fax:(505) 334-6170

**District IV**  
 1220 S. St Francis Dr., Santa Fe, NM 87505  
 Phone:(505) 476-3470 Fax:(505) 476-3462

**State of New Mexico**  
**Energy, Minerals and Natural Resources**  
**Oil Conservation Division**  
**1220 S. St Francis Dr.**  
**Santa Fe, NM 87505**

ACKNOWLEDGMENTS

Action 31307

**ACKNOWLEDGMENTS**

Operator: EOG RESOURCES INC P.O. Box 2267 Midland, TX 79702	OGRID: 7377
	Action Number: 31307
	Action Type: [C-104] Completion Packet (C-104C)

**ACKNOWLEDGMENTS**

<input checked="" type="checkbox"/>	I hereby certify that the required Water Use Report has been, or will be, submitted for this wells completion.
<input checked="" type="checkbox"/>	I hereby certify that the required FracFocus disclosure has been, or will be, submitted for this wells completion.

**District I**  
 1625 N. French Dr., Hobbs, NM 88240  
 Phone:(575) 393-6161 Fax:(575) 393-0720

**District II**  
 811 S. First St., Artesia, NM 88210  
 Phone:(575) 748-1283 Fax:(575) 748-9720

**District III**  
 1000 Rio Brazos Rd., Aztec, NM 87410  
 Phone:(505) 334-6178 Fax:(505) 334-6170

**District IV**  
 1220 S. St Francis Dr., Santa Fe, NM 87505  
 Phone:(505) 476-3470 Fax:(505) 476-3462

**State of New Mexico**  
**Energy, Minerals and Natural Resources**  
**Oil Conservation Division**  
**1220 S. St Francis Dr.**  
**Santa Fe, NM 87505**

CONDITIONS  
 Action 31307

**CONDITIONS**

Operator: EOG RESOURCES INC P.O. Box 2267 Midland, TX 79702	OGRID: 7377
	Action Number: 31307
	Action Type: [C-104] Completion Packet (C-104C)

**CONDITIONS**

Created By	Condition	Condition Date
ksimmons	None	8/10/2021