

District I
1625 N. French Dr., Hobbs, NM 88240
District II
811 S. First St., Artesia, NM 88210
District III
1000 Rio Brazos Rd., Aztec, NM 87410
District IV
1220 S. St. Francis Dr., Santa Fe, NM 87505

State of New Mexico
Energy, Minerals & Natural Resources

Form C-104
Revised August 1, 2011

Oil Conservation Division
1220 South St. Francis Dr.
Santa Fe, NM 87505

Submit one copy to appropriate District Office

AMENDED REPORT

I. REQUEST FOR ALLOWABLE AND AUTHORIZATION TO TRANSPORT

¹ Operator name and Address BTA OIL PRODUCERS, LLC 104 S. PECOS MIDLAND, TX.		² OGRID Number 260297	³ Reason for Filing Code/ Effective Date NEW WELL
⁴ API Number 30 – 025-46409	⁵ Pool Name SANDERS TANK-UPR WOLFCAMP	⁶ Pool Code 98097	
⁷ Property Code 326144	⁸ Property Name MESA B 8115 FED COM	⁹ Well Number 24H	

II. ¹⁰ Surface Location

UL or lot no. A	Sec 7	Township 26S	Range 33E	Lot Idn	460	NORTH LINE	600	EAST LINE	County LEA
--------------------	-------	-----------------	--------------	---------	-----	------------	-----	-----------	------------

¹¹ Bottom Hole Location

UL or lot no. O	Section 7	Township 26S	Range 33E	Lot Idn	50	SOUTH LINE	1650	EAST LINE	LEA
¹² Lse Code 160973	¹³ Producing Method FLOWING	¹⁴ Gas Connection		¹⁵ C-129 Permit Number		¹⁶ C-129 Effective Date			

III. Oil and Gas Transporters

¹⁸ Transporter OGRID	¹⁹ Transporter Name and Address	²⁰ O/G/W
34053	PLAINS MARKETING LP P O BOX 4648 HOUSTON, TX 77210-4648	
371058	ETC FIELD SERVICES LLC 8111 WESTCHESTER DR., STE 600 DALLAS, TX. 75225	

IV. Well Completion Data

²¹ Spud Date 3/4/2020	²² Ready Date 12/17/2020	²³ TD 17,567	²⁴ PBTB 17,541	²⁵ Perforations 12,700'-17,460'	²⁶ DHC, MC
²⁷ Hole Size	²⁸ Casing & Tubing Size	²⁹ Depth Set	³⁰ Sacks Cement		
14-3/4"	10-3/4"	915	630		
8-3/4"	7-5/8"	12,017	1645		
6-3/4"	5-1/2"-5"	17,567	1370		

V. Well Test Data

³¹ Date New Oil 12/17/2020	³² Gas Delivery Date 12/21/2020	³³ Test Date 12/21/2020	³⁴ Test Length 24	³⁵ Tbg. Pressure 4250	³⁶ Csg. Pressure
³⁷ Choke Size 18/64	³⁸ Oil 354	³⁹ Water 2630	⁴⁰ Gas 809		⁴¹ Test Method flowing

⁴² I hereby certify that the rules of the Oil Conservation Division have been complied with and that the information given above is true and complete to the best of my knowledge and belief. Signature: <i>Katy Reddell</i> Printed name: KATY REDDELL Title: REGULATORY ANALYST E-mail Address: kreddell@btaoil.com 12/22/2020 432-682-3753	OIL CONSERVATION DIVISION	
	Approved by:	KURT SIMMONS
	Title:	08/23/2021
	Approval Date:	08/23/2021

Date:	Phone:	
-------	--------	--

DISTRICT I
1625 N. French Dr., Hobbs, NM 88240
Phone: (575) 393-6161 Fax: (575) 393-0720

DISTRICT II
811 S. First St., Artesia, NM 88210
Phone: (575) 748-1283 Fax: (575) 748-9720

DISTRICT III
1000 Rio Brazos Road, Aztec, NM 87410
Phone: (505) 334-6178 Fax: (505) 334-6170

DISTRICT IV
1220 S. St. Francis Dr., Santa Fe, NM 87505
Phone: (505) 476-3460 Fax: (505) 476-3462

State of New Mexico
Energy, Minerals & Natural Resources Department
OIL CONSERVATION DIVISION
1220 South St. Francis Dr.
Santa Fe, New Mexico 87505

Form C-102

Revised August 1, 2011

Submit one copy to appropriate
District Office

AMENDED REPORT
AS-DRILLED PLAT

WELL LOCATION AND ACREAGE DEDICATION PLAT

API Number 30-025-46409	Pool Code 98097	Pool Name SANDERS TANK-UPPER WOLFCAMP
Property Code 326144	Property Name MESA B 8115 FED COM	Well Number 24H
OGRID No. 260297	Operator Name BTA OIL PRODUCERS, LLC	Elevation 3308'

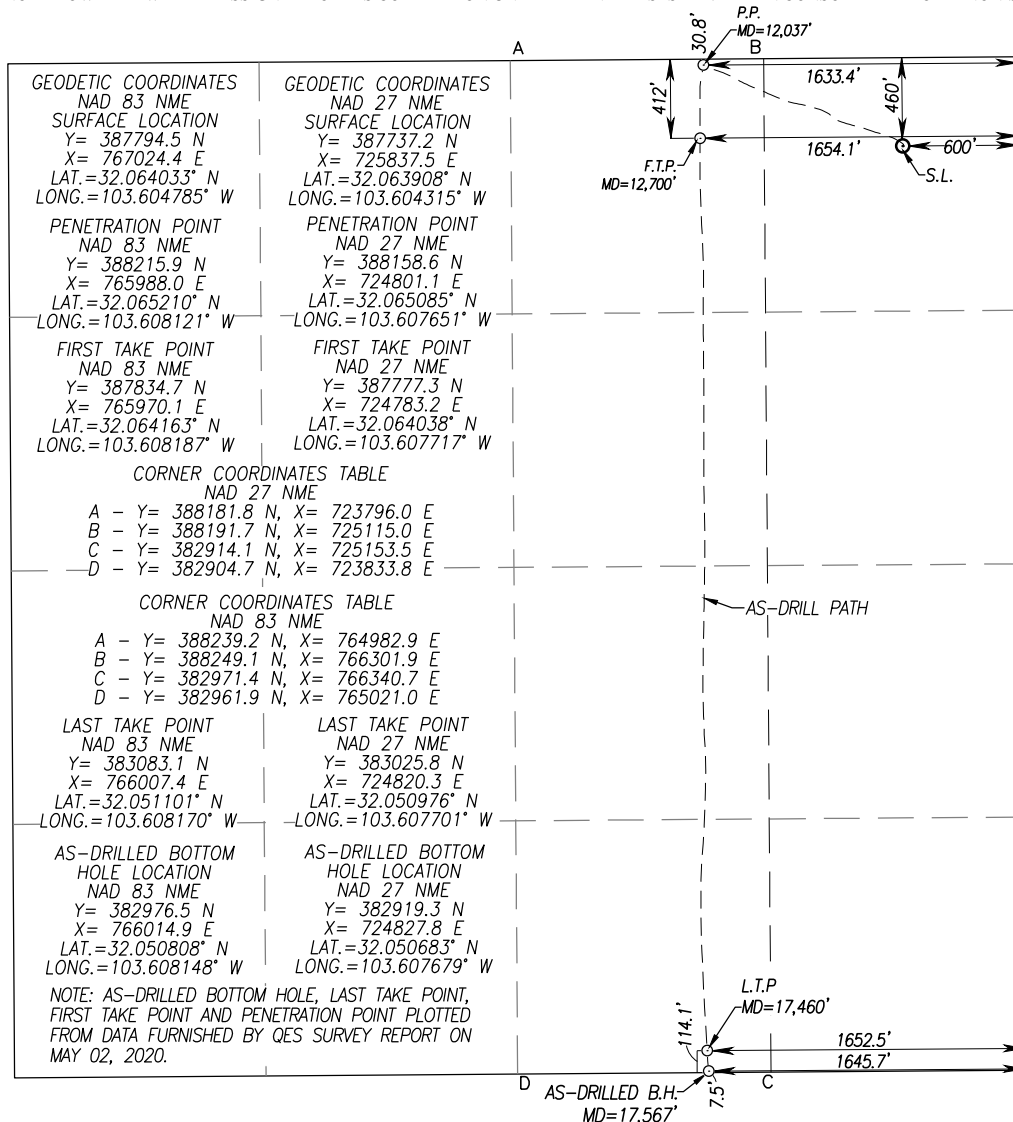
Surface Location									
UL or lot No.	Section	Township	Range	Lot Idn	Feet from the	North/South line	Feet from the	East/West line	County
A	7	26-S	33-E		460	NORTH	600	EAST	LEA

As-Drilled Bottom Hole Location If Different From Surface									
UL or lot No.	Section	Township	Range	Lot Idn	Feet from the	North/South line	Feet from the	East/West line	County
O	7	26-S	33-E		7.5	SOUTH	1645.7	EAST	LEA

Penetration Point Location									
UL or lot No.	Section	Township	Range	Lot Idn	Feet from the	North/South line	Feet from the	East/West line	County
B	7	26-S	33-E		30.8	NORTH	1633.4	EAST	LEA

Dedicated Acres 160	Joint or Infill	Consolidation Code	Order No.
-------------------------------	-----------------	--------------------	-----------

NO ALLOWABLE WILL BE ASSIGNED TO THIS COMPLETION UNTIL ALL INTERESTS HAVE BEEN CONSOLIDATED OR A NON-STANDARD UNIT HAS BEEN APPROVED BY THE DIVISION



OPERATOR CERTIFICATION

I hereby certify that the information herein is true and complete to the best of my knowledge and belief, and that this organization either owns a working interest or unleased mineral interest in the land including the proposed bottom hole location or has a right to drill this well at this location pursuant to a contract with an owner of such mineral or working interest, or to a voluntary pooling agreement or a compulsory pooling order heretofore entered by the division.

Katy Reddell 3/23/2021
Signature Date

KATY REDDELL
Printed Name

kreddell@btaoil.com
E-mail Address

SURVEYOR CERTIFICATION

I hereby certify that the well location shown on this plat was plotted from field notes of actual surveys made by me or under my supervision and that the same is true and correct to the best of my belief.

Date of Survey **12641**
Signature and Seal of Professional Surveyor

Gary G. Eidson 02/24/2021

Certificate Number **Gary G. Eidson 12641**
Ronald J. Eidson 3239

ACK Rel. W.o.: 19.13.1146 JWSC W.O.: 21130077



BTA Oil Producers, LLC

Lea County, NM (NAD 83)

Sec 7, T26-S, R33-E

Mesa B 8115 Fed Com #24H

Wellbore #1

Design: Wellbore #1

Survey Report - Geographic

02 May, 2020





QES
Survey Report - Geographic



Company:	BTA Oil Producers, LLC	Local Co-ordinate Reference:	Well Mesa B 8115 Fed Com #24H
Project:	Lea County, NM (NAD 83)	TVD Reference:	WELL @ 3333.0usft (Patterson #566)
Site:	Sec 7, T26-S, R33-E	MD Reference:	WELL @ 3333.0usft (Patterson #566)
Well:	Mesa B 8115 Fed Com #24H	North Reference:	Grid
Wellbore:	Wellbore #1	Survey Calculation Method:	Minimum Curvature
Design:	Wellbore #1	Database:	EDM 5000.1 Single User Db

Project	Lea County, NM (NAD 83)		
Map System:	US State Plane 1983	System Datum:	Mean Sea Level
Geo Datum:	North American Datum 1983		
Map Zone:	New Mexico Eastern Zone		

Site	Sec 7, T26-S, R33-E				
Site Position:		Northing:	387,854.60 usft	Latitude:	32° 3' 51.113 N
From:	Map	Easting:	767,023.90 usft	Longitude:	103° 36' 17.227 W
Position Uncertainty:	0.0 usft	Slot Radius:	13-3/16 "	Grid Convergence:	0.39 °

Well	Mesa B 8115 Fed Com #24H					
Well Position	+N/-S	0.0 usft	Northing:	387,794.50 usft	Latitude:	32° 3' 50.518 N
	+E/-W	0.0 usft	Easting:	767,024.40 usft	Longitude:	103° 36' 17.226 W
Position Uncertainty		0.0 usft	Wellhead Elevation:	usft	Ground Level:	3,308.0 usft

Wellbore	Wellbore #1				
Magnetics	Model Name	Sample Date	Declination (°)	Dip Angle (°)	Field Strength (nT)
	HDGM2020	4/8/2020	6.55	59.65	47,634.40000000

Design	Wellbore #1				
Audit Notes:					
Version:	1.0	Phase:	ACTUAL	Tie On Depth:	0.0
Vertical Section:	Depth From (TVD) (usft)	+N/-S (usft)	+E/-W (usft)	Direction (°)	
	0.0	0.0	0.0	191.99	

Survey Program	Date	5/2/2020			
From (usft)	To (usft)	Survey (Wellbore)	Tool Name	Description	
152.0	17,567.0	QES MWD Surveys (Wellbore #1)	MWD	OWSG MWD - Standard	

Survey										
Measured Depth (usft)	Inclination (°)	Azimuth (°)	Vertical Depth (usft)	+N/-S (usft)	+E/-W (usft)	Map Northing (usft)	Map Easting (usft)	Latitude	Longitude	
0.0	0.00	0.00	0.0	0.0	0.0	387,794.50	767,024.40	32° 3' 50.518 N	103° 36' 17.226 W	
152.0	0.80	9.30	152.0	1.0	0.2	387,795.55	767,024.57	32° 3' 50.529 N	103° 36' 17.224 W	
First MWD Survey @ 152.0' MD / 152.0' TVD										
243.0	0.50	60.10	243.0	1.9	0.6	387,796.37	767,025.02	32° 3' 50.537 N	103° 36' 17.218 W	
375.0	0.70	53.50	375.0	2.6	1.8	387,797.14	767,026.16	32° 3' 50.544 N	103° 36' 17.205 W	
469.0	0.60	60.00	469.0	3.2	2.7	387,797.73	767,027.05	32° 3' 50.550 N	103° 36' 17.195 W	
500.0	0.80	73.50	500.0	3.4	3.0	387,797.87	767,027.40	32° 3' 50.551 N	103° 36' 17.190 W	
592.0	0.80	67.70	592.0	3.8	4.2	387,798.29	767,028.61	32° 3' 50.555 N	103° 36' 17.176 W	
654.0	0.70	58.40	654.0	4.2	4.9	387,798.66	767,029.33	32° 3' 50.559 N	103° 36' 17.168 W	
746.0	0.70	1.80	746.0	5.0	5.4	387,799.51	767,029.83	32° 3' 50.567 N	103° 36' 17.162 W	
839.0	1.00	12.70	838.9	6.4	5.6	387,800.87	767,030.02	32° 3' 50.581 N	103° 36' 17.160 W	
883.0	1.10	5.30	882.9	7.2	5.8	387,801.67	767,030.15	32° 3' 50.589 N	103° 36' 17.158 W	



QES
Survey Report - Geographic



Company:	BTA Oil Producers, LLC	Local Co-ordinate Reference:	Well Mesa B 8115 Fed Com #24H
Project:	Lea County, NM (NAD 83)	TVD Reference:	WELL @ 3333.0usft (Patterson #566)
Site:	Sec 7, T26-S, R33-E	MD Reference:	WELL @ 3333.0usft (Patterson #566)
Well:	Mesa B 8115 Fed Com #24H	North Reference:	Grid
Wellbore:	Wellbore #1	Survey Calculation Method:	Minimum Curvature
Design:	Wellbore #1	Database:	EDM 5000.1 Single User Db

Survey										
Measured Depth (usft)	Inclination (°)	Azimuth (°)	Vertical Depth (usft)	+N/-S (usft)	+E/-W (usft)	Map Northing (usft)	Map Easting (usft)	Latitude	Longitude	
969.0	0.70	343.20	968.9	8.5	5.7	387,802.99	767,030.07	32° 3' 50.602 N	103° 36' 17.159 W	
1,062.0	3.80	308.70	1,061.8	11.0	3.1	387,805.46	767,027.50	32° 3' 50.627 N	103° 36' 17.189 W	
1,156.0	6.60	305.70	1,155.4	16.1	-3.7	387,810.56	767,020.68	32° 3' 50.677 N	103° 36' 17.268 W	
1,249.0	8.50	301.50	1,247.6	22.8	-13.9	387,817.28	767,010.48	32° 3' 50.745 N	103° 36' 17.386 W	
1,342.0	8.60	300.60	1,339.6	29.9	-25.8	387,824.41	766,998.64	32° 3' 50.816 N	103° 36' 17.523 W	
1,435.0	8.50	299.60	1,431.6	36.8	-37.7	387,831.34	766,986.67	32° 3' 50.885 N	103° 36' 17.661 W	
1,529.0	9.80	289.20	1,524.4	42.9	-51.3	387,837.40	766,973.08	32° 3' 50.946 N	103° 36' 17.819 W	
1,622.0	10.10	288.10	1,616.0	48.0	-66.5	387,842.54	766,957.85	32° 3' 50.998 N	103° 36' 17.995 W	
1,715.0	10.10	289.90	1,707.5	53.4	-82.0	387,847.85	766,942.43	32° 3' 51.052 N	103° 36' 18.174 W	
1,808.0	10.20	292.20	1,799.1	59.2	-97.3	387,853.74	766,927.14	32° 3' 51.111 N	103° 36' 18.351 W	
1,902.0	9.10	285.30	1,891.8	64.3	-112.1	387,858.84	766,912.27	32° 3' 51.162 N	103° 36' 18.524 W	
1,995.0	9.10	284.60	1,983.6	68.1	-126.3	387,862.64	766,898.05	32° 3' 51.201 N	103° 36' 18.688 W	
2,088.0	9.10	285.10	2,075.4	71.9	-140.6	387,866.41	766,883.84	32° 3' 51.239 N	103° 36' 18.853 W	
2,181.0	9.20	287.80	2,167.2	76.1	-154.7	387,870.59	766,869.66	32° 3' 51.282 N	103° 36' 19.018 W	
2,274.0	9.40	288.10	2,259.0	80.7	-169.0	387,875.23	766,855.36	32° 3' 51.328 N	103° 36' 19.184 W	
2,367.0	9.40	289.00	2,350.8	85.6	-183.4	387,880.06	766,840.96	32° 3' 51.377 N	103° 36' 19.351 W	
2,461.0	9.70	290.10	2,443.5	90.8	-198.1	387,885.28	766,826.27	32° 3' 51.430 N	103° 36' 19.521 W	
2,554.0	9.70	291.50	2,535.1	96.3	-212.8	387,890.84	766,811.62	32° 3' 51.486 N	103° 36' 19.691 W	
2,647.0	10.10	281.60	2,626.8	100.9	-228.1	387,895.36	766,796.34	32° 3' 51.531 N	103° 36' 19.868 W	
2,740.0	10.10	282.70	2,718.3	104.3	-244.0	387,898.79	766,780.40	32° 3' 51.566 N	103° 36' 20.053 W	
2,833.0	10.30	283.20	2,809.8	108.0	-260.0	387,902.48	766,764.35	32° 3' 51.604 N	103° 36' 20.239 W	
2,926.0	10.60	286.40	2,901.3	112.3	-276.4	387,906.79	766,748.05	32° 3' 51.648 N	103° 36' 20.428 W	
3,019.0	8.40	286.60	2,993.0	116.7	-291.1	387,911.15	766,733.33	32° 3' 51.692 N	103° 36' 20.599 W	
3,113.0	8.30	287.40	3,086.0	120.6	-304.1	387,915.14	766,720.28	32° 3' 51.732 N	103° 36' 20.750 W	
3,206.0	8.00	290.20	3,178.1	124.9	-316.6	387,919.38	766,707.80	32° 3' 51.775 N	103° 36' 20.895 W	
3,299.0	7.80	289.40	3,270.2	129.2	-328.6	387,923.71	766,695.77	32° 3' 51.819 N	103° 36' 21.034 W	
3,392.0	7.80	292.50	3,362.3	133.7	-340.4	387,928.22	766,683.99	32° 3' 51.864 N	103° 36' 21.171 W	
3,485.0	6.70	304.30	3,454.6	139.2	-350.7	387,933.70	766,673.67	32° 3' 51.919 N	103° 36' 21.290 W	
3,579.0	8.00	310.30	3,547.8	146.5	-360.2	387,941.02	766,664.16	32° 3' 51.992 N	103° 36' 21.400 W	
3,672.0	8.70	316.30	3,639.8	155.8	-370.0	387,950.29	766,654.36	32° 3' 52.085 N	103° 36' 21.513 W	
3,765.0	9.20	308.50	3,731.7	165.5	-380.7	387,960.00	766,643.68	32° 3' 52.181 N	103° 36' 21.637 W	
3,858.0	9.10	296.00	3,823.5	173.4	-393.1	387,967.85	766,631.25	32° 3' 52.260 N	103° 36' 21.781 W	
3,951.0	9.10	293.40	3,915.4	179.5	-406.5	387,974.00	766,617.89	32° 3' 52.322 N	103° 36' 21.935 W	
4,044.0	8.70	298.30	4,007.2	185.8	-419.4	387,980.26	766,604.95	32° 3' 52.384 N	103° 36' 22.085 W	
4,138.0	8.60	285.70	4,100.2	191.0	-432.5	387,985.53	766,591.92	32° 3' 52.437 N	103° 36' 22.236 W	
4,231.0	7.70	283.20	4,192.2	194.3	-445.2	387,988.83	766,579.16	32° 3' 52.471 N	103° 36' 22.384 W	
4,324.0	6.90	286.90	4,284.5	197.4	-456.6	387,991.88	766,567.75	32° 3' 52.502 N	103° 36' 22.517 W	
4,417.0	5.80	288.30	4,376.9	200.5	-466.5	387,994.98	766,557.95	32° 3' 52.533 N	103° 36' 22.630 W	
4,510.0	7.30	285.30	4,469.3	203.5	-476.6	387,998.01	766,547.78	32° 3' 52.564 N	103° 36' 22.748 W	
4,604.0	6.70	283.00	4,562.6	206.3	-487.7	388,000.82	766,536.68	32° 3' 52.592 N	103° 36' 22.877 W	
4,697.0	8.50	285.10	4,654.8	209.3	-499.6	388,003.83	766,524.76	32° 3' 52.623 N	103° 36' 23.015 W	
4,790.0	8.90	285.70	4,746.7	213.1	-513.2	388,007.57	766,511.20	32° 3' 52.661 N	103° 36' 23.173 W	
4,883.0	7.90	281.60	4,838.7	216.3	-526.4	388,010.80	766,498.01	32° 3' 52.694 N	103° 36' 23.326 W	
4,977.0	8.00	280.80	4,931.8	218.8	-539.1	388,013.33	766,485.26	32° 3' 52.720 N	103° 36' 23.474 W	
5,070.0	8.10	280.60	5,023.9	221.2	-551.9	388,015.75	766,472.46	32° 3' 52.744 N	103° 36' 23.622 W	
5,163.0	8.10	280.60	5,116.0	223.7	-564.8	388,018.16	766,459.58	32° 3' 52.769 N	103° 36' 23.772 W	
5,256.0	8.00	280.20	5,208.1	226.0	-577.6	388,020.51	766,446.77	32° 3' 52.793 N	103° 36' 23.920 W	
5,349.0	8.30	288.50	5,300.1	229.3	-590.4	388,023.78	766,434.03	32° 3' 52.826 N	103° 36' 24.068 W	
5,442.0	8.20	292.00	5,392.2	233.9	-602.9	388,028.40	766,421.52	32° 3' 52.873 N	103° 36' 24.213 W	
5,536.0	8.10	292.00	5,485.2	238.9	-615.2	388,033.39	766,409.16	32° 3' 52.923 N	103° 36' 24.356 W	
5,629.0	8.20	290.60	5,577.3	243.7	-627.5	388,038.18	766,396.88	32° 3' 52.971 N	103° 36' 24.499 W	
5,722.0	8.10	291.50	5,669.3	248.4	-639.8	388,042.91	766,384.58	32° 3' 53.019 N	103° 36' 24.641 W	
5,815.0	7.90	290.20	5,761.4	253.0	-651.9	388,047.52	766,372.48	32° 3' 53.065 N	103° 36' 24.781 W	
5,908.0	7.50	291.50	5,853.6	257.5	-663.6	388,051.95	766,360.84	32° 3' 53.110 N	103° 36' 24.916 W	
6,001.0	8.40	293.20	5,945.7	262.4	-675.5	388,056.85	766,348.95	32° 3' 53.159 N	103° 36' 25.054 W	



QES
Survey Report - Geographic



Company:	BTA Oil Producers, LLC	Local Co-ordinate Reference:	Well Mesa B 8115 Fed Com #24H
Project:	Lea County, NM (NAD 83)	TVD Reference:	WELL @ 3333.0usft (Patterson #566)
Site:	Sec 7, T26-S, R33-E	MD Reference:	WELL @ 3333.0usft (Patterson #566)
Well:	Mesa B 8115 Fed Com #24H	North Reference:	Grid
Wellbore:	Wellbore #1	Survey Calculation Method:	Minimum Curvature
Design:	Wellbore #1	Database:	EDM 5000.1 Single User Db

Survey										
Measured Depth (usft)	Inclination (°)	Azimuth (°)	Vertical Depth (usft)	+N/-S (usft)	+E/-W (usft)	Map Northing (usft)	Map Easting (usft)	Latitude	Longitude	
6,094.0	8.60	294.60	6,037.7	267.9	-688.0	388,062.42	766,336.38	32° 3' 53.215 N	103° 36' 25.200 W	
6,187.0	8.40	293.60	6,129.7	273.5	-700.6	388,068.04	766,323.83	32° 3' 53.272 N	103° 36' 25.345 W	
6,280.0	8.40	293.10	6,221.7	278.9	-713.0	388,073.42	766,311.36	32° 3' 53.326 N	103° 36' 25.490 W	
6,341.1	8.33	293.75	6,282.1	282.5	-721.2	388,076.96	766,303.20	32° 3' 53.361 N	103° 36' 25.584 W	
LL Crossed @ 6341.1'MD / 6282.1' TVD										
6,373.0	8.30	294.10	6,313.7	284.3	-725.4	388,078.83	766,298.98	32° 3' 53.380 N	103° 36' 25.633 W	
6,466.0	8.40	293.60	6,405.7	289.8	-737.8	388,084.29	766,286.63	32° 3' 53.435 N	103° 36' 25.776 W	
6,559.0	8.60	292.70	6,497.7	295.2	-750.4	388,089.69	766,273.99	32° 3' 53.489 N	103° 36' 25.923 W	
6,653.0	8.10	292.50	6,590.7	300.4	-763.0	388,094.94	766,261.39	32° 3' 53.542 N	103° 36' 26.069 W	
6,746.0	8.00	291.80	6,682.7	305.3	-775.1	388,099.85	766,249.33	32° 3' 53.591 N	103° 36' 26.208 W	
6,839.0	7.80	291.30	6,774.9	310.0	-787.0	388,104.54	766,237.44	32° 3' 53.639 N	103° 36' 26.346 W	
6,932.0	8.40	294.50	6,866.9	315.2	-799.0	388,109.65	766,225.38	32° 3' 53.690 N	103° 36' 26.486 W	
7,025.0	8.60	295.50	6,958.9	321.0	-811.5	388,115.46	766,212.92	32° 3' 53.748 N	103° 36' 26.630 W	
7,118.0	8.20	296.90	7,050.9	327.0	-823.7	388,121.46	766,200.73	32° 3' 53.809 N	103° 36' 26.771 W	
7,211.0	8.00	297.30	7,143.0	332.9	-835.3	388,127.43	766,189.07	32° 3' 53.868 N	103° 36' 26.907 W	
7,304.0	7.60	296.00	7,235.1	338.6	-846.6	388,133.09	766,177.79	32° 3' 53.925 N	103° 36' 27.037 W	
7,397.0	7.60	296.20	7,327.3	344.0	-857.7	388,138.50	766,166.74	32° 3' 53.979 N	103° 36' 27.165 W	
7,490.0	6.40	297.80	7,419.6	349.1	-867.8	388,143.63	766,156.64	32° 3' 54.031 N	103° 36' 27.282 W	
7,583.0	5.60	299.60	7,512.1	353.8	-876.3	388,148.29	766,148.11	32° 3' 54.078 N	103° 36' 27.381 W	
7,676.0	5.60	298.20	7,604.7	358.2	-884.2	388,152.68	766,140.16	32° 3' 54.122 N	103° 36' 27.473 W	
7,768.0	5.30	298.30	7,696.2	362.3	-891.9	388,156.81	766,132.47	32° 3' 54.163 N	103° 36' 27.562 W	
7,861.0	5.10	295.70	7,788.9	366.1	-899.4	388,160.64	766,124.96	32° 3' 54.201 N	103° 36' 27.649 W	
7,954.0	5.20	295.90	7,881.5	369.8	-907.0	388,164.28	766,117.44	32° 3' 54.238 N	103° 36' 27.736 W	
8,048.0	4.70	295.30	7,975.1	373.3	-914.3	388,167.78	766,110.13	32° 3' 54.273 N	103° 36' 27.821 W	
8,141.0	6.60	292.00	8,067.7	376.9	-922.7	388,171.41	766,101.73	32° 3' 54.309 N	103° 36' 27.918 W	
8,234.0	6.90	290.90	8,160.0	380.9	-932.8	388,175.41	766,091.56	32° 3' 54.350 N	103° 36' 28.036 W	
8,327.0	6.20	290.60	8,252.4	384.7	-942.8	388,179.17	766,081.64	32° 3' 54.388 N	103° 36' 28.151 W	
8,420.0	5.80	290.60	8,344.9	388.1	-951.9	388,182.59	766,072.54	32° 3' 54.422 N	103° 36' 28.256 W	
8,513.0	5.00	289.40	8,437.5	391.1	-960.1	388,185.59	766,064.31	32° 3' 54.452 N	103° 36' 28.352 W	
8,607.0	4.50	285.10	8,531.2	393.4	-967.5	388,187.91	766,056.89	32° 3' 54.476 N	103° 36' 28.438 W	
8,700.0	6.40	288.50	8,623.8	396.0	-975.9	388,190.51	766,048.45	32° 3' 54.502 N	103° 36' 28.536 W	
8,793.0	6.30	287.60	8,716.2	399.2	-985.7	388,193.69	766,038.67	32° 3' 54.534 N	103° 36' 28.649 W	
8,886.0	5.70	284.30	8,808.7	401.9	-995.1	388,196.38	766,029.33	32° 3' 54.561 N	103° 36' 28.757 W	
8,979.0	4.90	285.50	8,901.3	404.1	-1,003.4	388,198.58	766,021.03	32° 3' 54.584 N	103° 36' 28.854 W	
9,072.0	4.20	286.90	8,994.0	406.1	-1,010.5	388,200.63	766,013.94	32° 3' 54.604 N	103° 36' 28.936 W	
9,165.0	3.70	286.00	9,086.8	407.9	-1,016.6	388,202.45	766,007.80	32° 3' 54.623 N	103° 36' 29.007 W	
9,259.0	2.60	286.40	9,180.6	409.4	-1,021.6	388,203.89	766,002.84	32° 3' 54.637 N	103° 36' 29.065 W	
9,352.0	2.30	282.70	9,273.5	410.4	-1,025.4	388,204.89	765,999.00	32° 3' 54.648 N	103° 36' 29.109 W	
9,445.0	2.00	288.00	9,366.5	411.3	-1,028.8	388,205.80	765,995.63	32° 3' 54.657 N	103° 36' 29.148 W	
9,538.0	1.80	292.20	9,459.4	412.4	-1,031.7	388,206.86	765,992.74	32° 3' 54.667 N	103° 36' 29.182 W	
9,632.0	2.30	324.90	9,553.4	414.5	-1,034.1	388,208.96	765,990.29	32° 3' 54.688 N	103° 36' 29.210 W	
9,725.0	2.00	304.80	9,646.3	416.9	-1,036.5	388,211.41	765,987.88	32° 3' 54.713 N	103° 36' 29.238 W	
9,818.0	0.50	223.30	9,739.3	417.5	-1,038.1	388,212.04	765,986.27	32° 3' 54.719 N	103° 36' 29.257 W	
9,911.0	0.70	205.30	9,832.3	416.7	-1,038.6	388,211.23	765,985.75	32° 3' 54.711 N	103° 36' 29.263 W	
10,005.0	0.60	199.90	9,926.3	415.8	-1,039.1	388,210.25	765,985.33	32° 3' 54.702 N	103° 36' 29.268 W	
10,098.0	0.80	143.80	10,019.3	414.8	-1,038.8	388,209.27	765,985.55	32° 3' 54.692 N	103° 36' 29.265 W	
10,191.0	1.60	127.50	10,112.2	413.5	-1,037.4	388,207.95	765,986.97	32° 3' 54.679 N	103° 36' 29.249 W	
10,284.0	0.20	145.00	10,205.2	412.5	-1,036.3	388,207.03	765,988.09	32° 3' 54.670 N	103° 36' 29.236 W	
10,377.0	0.80	316.40	10,298.2	412.9	-1,036.7	388,207.37	765,987.73	32° 3' 54.673 N	103° 36' 29.240 W	
10,470.0	0.40	329.60	10,391.2	413.6	-1,037.3	388,208.12	765,987.12	32° 3' 54.680 N	103° 36' 29.247 W	
10,563.0	0.60	105.50	10,484.2	413.8	-1,037.0	388,208.27	765,987.43	32° 3' 54.682 N	103° 36' 29.243 W	
10,657.0	1.20	153.70	10,578.2	412.8	-1,036.1	388,207.25	765,988.34	32° 3' 54.672 N	103° 36' 29.233 W	
10,750.0	1.00	104.10	10,671.2	411.7	-1,034.8	388,206.18	765,989.56	32° 3' 54.661 N	103° 36' 29.219 W	
10,843.0	1.90	82.50	10,764.2	411.7	-1,032.5	388,206.19	765,991.87	32° 3' 54.661 N	103° 36' 29.192 W	
10,936.0	1.40	26.90	10,857.1	412.9	-1,030.5	388,207.40	765,993.91	32° 3' 54.673 N	103° 36' 29.168 W	



QES
Survey Report - Geographic



Company:	BTA Oil Producers, LLC	Local Co-ordinate Reference:	Well Mesa B 8115 Fed Com #24H
Project:	Lea County, NM (NAD 83)	TVD Reference:	WELL @ 3333.0usft (Patterson #566)
Site:	Sec 7, T26-S, R33-E	MD Reference:	WELL @ 3333.0usft (Patterson #566)
Well:	Mesa B 8115 Fed Com #24H	North Reference:	Grid
Wellbore:	Wellbore #1	Survey Calculation Method:	Minimum Curvature
Design:	Wellbore #1	Database:	EDM 5000.1 Single User Db

Survey										
Measured Depth (usft)	Inclination (°)	Azimuth (°)	Vertical Depth (usft)	+N/-S (usft)	+E/-W (usft)	Map Northing (usft)	Map Easting (usft)	Latitude	Longitude	
11,029.0	1.50	356.20	10,950.1	415.1	-1,030.0	388,209.63	765,994.35	32° 3' 54.695 N	103° 36' 29.163 W	
11,122.0	1.70	349.80	11,043.1	417.7	-1,030.4	388,212.20	765,994.02	32° 3' 54.720 N	103° 36' 29.166 W	
11,215.0	2.10	356.30	11,136.0	420.8	-1,030.7	388,215.26	765,993.67	32° 3' 54.751 N	103° 36' 29.170 W	
11,308.0	2.20	351.10	11,228.9	424.2	-1,031.1	388,218.72	765,993.28	32° 3' 54.785 N	103° 36' 29.175 W	
11,401.0	1.70	311.70	11,321.9	426.9	-1,032.4	388,221.41	765,991.98	32° 3' 54.811 N	103° 36' 29.190 W	
11,494.0	0.90	287.10	11,414.9	428.0	-1,034.1	388,222.54	765,990.25	32° 3' 54.823 N	103° 36' 29.210 W	
11,587.0	1.70	5.50	11,507.9	429.6	-1,034.7	388,224.13	765,989.68	32° 3' 54.839 N	103° 36' 29.216 W	
11,680.0	1.00	208.30	11,600.8	430.3	-1,035.0	388,224.78	765,989.43	32° 3' 54.845 N	103° 36' 29.219 W	
11,773.0	1.70	200.40	11,693.8	428.3	-1,035.8	388,222.78	765,988.56	32° 3' 54.825 N	103° 36' 29.229 W	
11,866.0	1.40	193.00	11,786.8	425.9	-1,036.6	388,220.38	765,987.83	32° 3' 54.802 N	103° 36' 29.238 W	
11,959.0	1.30	181.60	11,879.8	423.7	-1,036.9	388,218.22	765,987.54	32° 3' 54.780 N	103° 36' 29.241 W	
11,969.0	1.30	178.40	11,889.8	423.5	-1,036.9	388,217.99	765,987.54	32° 3' 54.778 N	103° 36' 29.241 W	
12,015.0	1.60	170.20	11,935.7	422.3	-1,036.7	388,216.83	765,987.67	32° 3' 54.767 N	103° 36' 29.240 W	
12,079.0	2.80	172.80	11,999.7	419.9	-1,036.4	388,214.40	765,988.01	32° 3' 54.742 N	103° 36' 29.236 W	
12,174.0	19.20	193.20	12,092.6	402.3	-1,039.7	388,196.77	765,984.72	32° 3' 54.568 N	103° 36' 29.276 W	
12,269.0	31.40	189.70	12,178.4	362.5	-1,047.4	388,157.01	765,976.95	32° 3' 54.175 N	103° 36' 29.369 W	
12,288.7	32.60	188.25	12,195.1	352.2	-1,049.1	388,146.70	765,975.32	32° 3' 54.073 N	103° 36' 29.389 W	
100' HL Crossed @ 12288.7' MD / 12195.1' TVD										
12,364.0	37.30	183.50	12,256.8	309.3	-1,053.4	388,103.83	765,971.01	32° 3' 53.649 N	103° 36' 29.442 W	
12,460.0	44.90	178.60	12,329.1	246.3	-1,054.3	388,040.81	765,970.07	32° 3' 53.026 N	103° 36' 29.458 W	
12,554.0	56.70	180.40	12,388.4	173.6	-1,053.8	387,968.10	765,970.60	32° 3' 52.306 N	103° 36' 29.458 W	
12,649.0	68.50	180.00	12,432.1	89.4	-1,054.1	387,883.91	765,970.33	32° 3' 51.473 N	103° 36' 29.467 W	
12,745.0	82.50	180.90	12,456.0	-3.3	-1,054.8	387,791.20	765,969.57	32° 3' 50.556 N	103° 36' 29.483 W	
12,840.0	87.30	179.00	12,464.5	-97.9	-1,054.7	387,696.61	765,969.66	32° 3' 49.620 N	103° 36' 29.490 W	
12,869.0	88.00	179.30	12,465.7	-126.9	-1,054.3	387,667.64	765,970.09	32° 3' 49.333 N	103° 36' 29.487 W	
12,964.0	87.70	178.40	12,469.2	-221.8	-1,052.4	387,572.73	765,972.00	32° 3' 48.394 N	103° 36' 29.472 W	
13,059.0	88.10	177.90	12,472.7	-316.7	-1,049.3	387,477.84	765,975.06	32° 3' 47.455 N	103° 36' 29.444 W	
13,154.0	88.00	176.80	12,475.9	-411.5	-1,044.9	387,383.00	765,979.45	32° 3' 46.516 N	103° 36' 29.401 W	
13,248.0	88.50	177.90	12,478.8	-505.4	-1,040.6	387,289.14	765,983.80	32° 3' 45.587 N	103° 36' 29.357 W	
13,344.0	89.80	177.70	12,480.2	-601.3	-1,036.9	387,193.23	765,987.48	32° 3' 44.637 N	103° 36' 29.322 W	
13,439.0	88.70	180.40	12,481.5	-696.2	-1,035.3	387,098.26	765,989.06	32° 3' 43.698 N	103° 36' 29.311 W	
13,533.0	89.70	181.10	12,482.8	-790.2	-1,036.6	387,004.28	765,987.83	32° 3' 42.768 N	103° 36' 29.333 W	
13,628.0	89.90	179.80	12,483.1	-885.2	-1,037.3	386,909.28	765,987.08	32° 3' 41.828 N	103° 36' 29.349 W	
13,723.0	90.70	179.50	12,482.6	-980.2	-1,036.7	386,814.29	765,987.66	32° 3' 40.888 N	103° 36' 29.350 W	
13,817.0	87.50	179.70	12,484.1	-1,074.2	-1,036.1	386,720.31	765,988.32	32° 3' 39.958 N	103° 36' 29.349 W	
13,912.0	88.00	179.30	12,487.8	-1,169.1	-1,035.3	386,625.39	765,989.14	32° 3' 39.018 N	103° 36' 29.347 W	
14,008.0	87.70	179.00	12,491.4	-1,265.0	-1,033.8	386,529.47	765,990.57	32° 3' 38.069 N	103° 36' 29.338 W	
14,102.0	87.10	180.50	12,495.7	-1,358.9	-1,033.4	386,435.57	765,990.98	32° 3' 37.140 N	103° 36' 29.341 W	
14,197.0	87.80	180.50	12,499.9	-1,453.8	-1,034.2	386,340.67	765,990.15	32° 3' 36.201 N	103° 36' 29.358 W	
14,292.0	86.50	179.80	12,504.7	-1,548.7	-1,034.5	386,245.79	765,989.90	32° 3' 35.262 N	103° 36' 29.368 W	
14,387.0	87.10	179.70	12,510.0	-1,643.6	-1,034.1	386,150.94	765,990.31	32° 3' 34.323 N	103° 36' 29.371 W	
14,482.0	87.50	179.70	12,514.4	-1,738.5	-1,033.6	386,056.05	765,990.81	32° 3' 33.384 N	103° 36' 29.372 W	
14,576.0	88.50	179.80	12,517.7	-1,832.4	-1,033.2	385,962.10	765,991.22	32° 3' 32.455 N	103° 36' 29.375 W	
14,671.0	83.90	177.40	12,524.0	-1,927.1	-1,030.9	385,867.37	765,993.53	32° 3' 31.517 N	103° 36' 29.355 W	
14,766.0	86.00	180.40	12,532.4	-2,021.7	-1,029.1	385,772.78	765,995.34	32° 3' 30.581 N	103° 36' 29.342 W	
14,862.0	84.80	179.70	12,540.1	-2,117.4	-1,029.1	385,677.09	765,995.26	32° 3' 29.634 N	103° 36' 29.350 W	
14,957.0	88.30	181.20	12,545.8	-2,212.2	-1,029.9	385,582.28	765,994.51	32° 3' 28.696 N	103° 36' 29.366 W	
15,052.0	90.00	180.70	12,547.2	-2,307.2	-1,031.5	385,487.31	765,992.94	32° 3' 27.756 N	103° 36' 29.392 W	
15,147.0	92.80	181.40	12,544.9	-2,402.1	-1,033.2	385,392.36	765,991.20	32° 3' 26.817 N	103° 36' 29.419 W	
15,242.0	91.40	180.40	12,541.4	-2,497.1	-1,034.7	385,297.44	765,989.71	32° 3' 25.877 N	103° 36' 29.444 W	
15,336.0	91.00	181.40	12,539.4	-2,591.0	-1,036.2	385,203.47	765,988.23	32° 3' 24.948 N	103° 36' 29.469 W	
15,431.0	87.60	180.50	12,540.6	-2,686.0	-1,037.7	385,108.51	765,986.66	32° 3' 24.008 N	103° 36' 29.494 W	
15,526.0	88.50	180.70	12,543.8	-2,780.9	-1,038.7	385,013.57	765,985.66	32° 3' 23.069 N	103° 36' 29.513 W	
15,621.0	87.90	178.60	12,546.8	-2,875.9	-1,038.2	384,918.63	765,986.24	32° 3' 22.129 N	103° 36' 29.514 W	
15,716.0	88.40	178.20	12,549.9	-2,970.8	-1,035.5	384,823.71	765,988.89	32° 3' 21.190 N	103° 36' 29.491 W	



QES
Survey Report - Geographic



Company:	BTA Oil Producers, LLC	Local Co-ordinate Reference:	Well Mesa B 8115 Fed Com #24H
Project:	Lea County, NM (NAD 83)	TVD Reference:	WELL @ 3333.0usft (Patterson #566)
Site:	Sec 7, T26-S, R33-E	MD Reference:	WELL @ 3333.0usft (Patterson #566)
Well:	Mesa B 8115 Fed Com #24H	North Reference:	Grid
Wellbore:	Wellbore #1	Survey Calculation Method:	Minimum Curvature
Design:	Wellbore #1	Database:	EDM 5000.1 Single User Db

Survey									
Measured Depth (usft)	Inclination (°)	Azimuth (°)	Vertical Depth (usft)	+N/-S (usft)	+E/-W (usft)	Map Northing (usft)	Map Easting (usft)	Latitude	Longitude
15,811.0	87.40	177.20	12,553.3	-3,065.6	-1,031.7	384,728.86	765,992.70	32° 3' 20.251 N	103° 36' 29.454 W
15,905.0	88.50	176.30	12,556.7	-3,159.4	-1,026.4	384,635.07	765,998.03	32° 3' 19.322 N	103° 36' 29.399 W
16,000.0	88.20	181.10	12,559.4	-3,254.3	-1,024.2	384,540.16	766,000.18	32° 3' 18.383 N	103° 36' 29.382 W
16,094.0	88.90	181.40	12,561.8	-3,348.3	-1,026.3	384,446.21	765,998.13	32° 3' 17.454 N	103° 36' 29.413 W
16,189.0	88.10	181.90	12,564.3	-3,443.2	-1,029.0	384,351.29	765,995.40	32° 3' 16.514 N	103° 36' 29.452 W
16,284.0	88.50	182.30	12,567.1	-3,538.1	-1,032.5	384,256.39	765,991.92	32° 3' 15.576 N	103° 36' 29.500 W
16,379.0	87.10	183.50	12,570.8	-3,632.9	-1,037.3	384,161.59	765,987.12	32° 3' 14.638 N	103° 36' 29.563 W
16,473.0	87.50	185.10	12,575.2	-3,726.5	-1,044.3	384,067.96	765,980.08	32° 3' 13.712 N	103° 36' 29.652 W
16,568.0	91.40	181.20	12,576.1	-3,821.4	-1,049.5	383,973.14	765,974.86	32° 3' 12.774 N	103° 36' 29.720 W
16,662.0	89.80	178.80	12,575.1	-3,915.3	-1,049.5	383,879.16	765,974.86	32° 3' 11.844 N	103° 36' 29.727 W
16,757.0	90.00	180.20	12,575.3	-4,010.3	-1,048.7	383,784.17	765,975.69	32° 3' 10.904 N	103° 36' 29.725 W
16,852.0	89.70	178.10	12,575.5	-4,105.3	-1,047.3	383,689.18	765,977.10	32° 3' 9.964 N	103° 36' 29.716 W
16,947.0	89.40	177.20	12,576.3	-4,200.2	-1,043.4	383,594.27	765,980.99	32° 3' 9.024 N	103° 36' 29.678 W
17,042.0	90.40	178.10	12,576.5	-4,295.1	-1,039.5	383,499.35	765,984.89	32° 3' 8.085 N	103° 36' 29.641 W
17,135.0	89.50	177.20	12,576.5	-4,388.1	-1,035.7	383,406.43	765,988.70	32° 3' 7.165 N	103° 36' 29.603 W
17,230.0	87.80	176.50	12,578.8	-4,482.9	-1,030.5	383,311.60	765,993.92	32° 3' 6.226 N	103° 36' 29.550 W
17,324.0	87.80	176.80	12,582.4	-4,576.7	-1,025.0	383,217.83	765,999.41	32° 3' 5.298 N	103° 36' 29.494 W
17,419.0	87.50	176.80	12,586.3	-4,671.4	-1,019.7	383,123.06	766,004.71	32° 3' 4.360 N	103° 36' 29.440 W
17,473.2	87.27	176.23	12,588.8	-4,725.5	-1,016.4	383,069.02	766,008.00	32° 3' 3.825 N	103° 36' 29.406 W
100' HL Crossed @ 17473.2'MD / 12588.8' TVD									
17,514.0	87.10	175.80	12,590.8	-4,766.1	-1,013.6	383,028.37	766,010.83	32° 3' 3.422 N	103° 36' 29.376 W
17,567.0	87.10	175.80	12,593.4	-4,818.9	-1,009.7	382,975.58	766,014.71	32° 3' 2.900 N	103° 36' 29.335 W
TD @ 17567.0' MD / 12593.4' TVD									

Design Annotations				
Measured Depth (usft)	Vertical Depth (usft)	Local Coordinates		Comment
		+N/-S (usft)	+E/-W (usft)	
152.0	152.0	1.0	0.2	First MWD Survey @ 152.0' MD / 152.0' TVD
6,341.1	6,282.1	282.5	-721.2	LL Crossed @ 6341.1'MD / 6282.1' TVD
12,288.7	12,195.1	352.2	-1,049.1	100' HL Crossed @ 12288.7'MD / 12195.1' TVD
17,473.2	12,588.8	-4,725.5	-1,016.4	100' HL Crossed @ 17473.2'MD / 12588.8' TVD
17,567.0	12,593.4	-4,818.9	-1,009.7	TD @ 17567.0' MD / 12593.4' TVD

Checked By: _____ Approved By: _____ Date: _____

Form 3160-5
(June 2015)

UNITED STATES
DEPARTMENT OF THE INTERIOR
BUREAU OF LAND MANAGEMENT

FORM APPROVED
OMB NO. 1004-0137
Expires: January 31, 2018

SUNDRY NOTICES AND REPORTS ON WELLS
Do not use this form for proposals to drill or to re-enter an abandoned well. Use form 3160-3 (APD) for such proposals.

5. Lease Serial No.
NMNM0160973

6. If Indian, Allottee or Tribe Name

SUBMIT IN TRIPLICATE - Other instructions on page 2

7. If Unit or CA/Agreement, Name and/or No.
NMNM82045

1. Type of Well <input checked="" type="checkbox"/> Oil Well <input type="checkbox"/> Gas Well <input type="checkbox"/> Other		8. Well Name and No. MESA B 8115 FED COM 24H
2. Name of Operator BTA OIL PRODUCERS, LLC		9. API Well No. 30-025-46409
3a. Address 104 S. PECOS MIDLAND, TX 79701		10. Field and Pool or Exploratory Area SANDERS TANK-UPPR WOLFCAM
3b. Phone No. (include area code) Ph: 432-682-3753		
4. Location of Well (Footage, Sec., T., R., M., or Survey Description) Sec 7 T26S R33E 460FNL 600FEL 32.064033 N Lat, 103.604785 W Lon		11. County or Parish, State LEA COUNTY, NM

12. CHECK THE APPROPRIATE BOX(ES) TO INDICATE NATURE OF NOTICE, REPORT, OR OTHER DATA

TYPE OF SUBMISSION	TYPE OF ACTION			
<input checked="" type="checkbox"/> Notice of Intent	<input type="checkbox"/> Acidize	<input type="checkbox"/> Deepen	<input type="checkbox"/> Production (Start/Resume)	<input type="checkbox"/> Water Shut-Off
<input type="checkbox"/> Subsequent Report	<input type="checkbox"/> Alter Casing	<input type="checkbox"/> Hydraulic Fracturing	<input type="checkbox"/> Reclamation	<input type="checkbox"/> Well Integrity
<input type="checkbox"/> Final Abandonment Notice	<input type="checkbox"/> Casing Repair	<input type="checkbox"/> New Construction	<input type="checkbox"/> Recomplete	<input checked="" type="checkbox"/> Other Hydraulic Fracture
	<input type="checkbox"/> Change Plans	<input type="checkbox"/> Plug and Abandon	<input type="checkbox"/> Temporarily Abandon	
	<input type="checkbox"/> Convert to Injection	<input type="checkbox"/> Plug Back	<input type="checkbox"/> Water Disposal	

13. Describe Proposed or Completed Operation: Clearly state all pertinent details, including estimated starting date of any proposed work and approximate duration thereof. If the proposal is to deepen directionally or recomplete horizontally, give subsurface locations and measured and true vertical depths of all pertinent markers and zones. Attach the Bond under which the work will be performed or provide the Bond No. on file with BLM/BIA. Required subsequent reports must be filed within 30 days following completion of the involved operations. If the operation results in a multiple completion or recompletion in a new interval, a Form 3160-4 must be filed once testing has been completed. Final Abandonment Notices must be filed only after all requirements, including reclamation, have been completed and the operator has determined that the site is ready for final inspection.

TD: 17,567' REACHED ON 5/02/2020

PBTD: 17,541'

12/02/2020: PERFORATE AND FRAC: 12,700' - 17,460' WITH 271,369 BBLS OF TOTAL FLUID. 11,427,150#S 100 MESH SAND.

12/02/2020 DRILL OUT COMPLETE.

12/17/2020: START FLOWING BACK AND TESTING.

14. I hereby certify that the foregoing is true and correct. Electronic Submission #541791 verified by the BLM Well Information System For BTA OIL PRODUCERS, LLC, sent to the Hobbs	
Name (Printed/Typed) KATY REDDELL	Title REGULATORY ANALYST
Signature (Electronic Submission)	Date 12/23/2020

THIS SPACE FOR FEDERAL OR STATE OFFICE USE

Approved By _____	Title _____	Date _____
Conditions of approval, if any, are attached. Approval of this notice does not warrant or certify that the applicant holds legal or equitable title to those rights in the subject lease which would entitle the applicant to conduct operations thereon.		Office _____

Title 18 U.S.C. Section 1001 and Title 43 U.S.C. Section 1212, make it a crime for any person knowingly and willfully to make to any department or agency of the United States any false, fictitious or fraudulent statements or representations as to any matter within its jurisdiction.

(Instructions on page 2)

**** OPERATOR-SUBMITTED ** OPERATOR-SUBMITTED ** OPERATOR-SUBMITTED ****

Submit To Appropriate District Office Two Copies District I 1625 N. French Dr., Hobbs, NM 88240 District II 811 S. First St., Artesia, NM 88210 District III 1000 Rio Brazos Rd., Aztec, NM 87410 District IV 1220 S. St. Francis Dr., Santa Fe, NM 87505	State of New Mexico Energy, Minerals and Natural Resources Oil Conservation Division 1220 South St. Francis Dr. Santa Fe, NM 87505	Form C-105 Revised April 3, 2017 1. WELL API NO. 30-025-46409 2. Type of Lease <input type="checkbox"/> STATE <input type="checkbox"/> FEE <input checked="" type="checkbox"/> FED/INDIAN 3. State Oil & Gas Lease No. NMNM 160973
--	---	--

WELL COMPLETION OR RECOMPLETION REPORT AND LOG

4. Reason for filing: <input checked="" type="checkbox"/> COMPLETION REPORT (Fill in boxes #1 through #31 for State and Fee wells only) <input type="checkbox"/> C-144 CLOSURE ATTACHMENT (Fill in boxes #1 through #9, #15 Date Rig Released and #32 and/or #33; attach this and the plat to the C-144 closure report in accordance with 19.15.17.13.K NMAC)	5. Lease Name or Unit Agreement Name MESA B 8115 FED COM 6. Well Number: 24H
---	---

7. Type of Completion:
 NEW WELL WORKOVER DEEPENING PLUGBACK DIFFERENT RESERVOIR OTHER

8. Name of Operator BTA OIL PRODUCERS, LLC	9. OGRID 260297
---	--------------------

10. Address of Operator 104 S. PECOS; MIDLAND, TX. 79701	11. Pool name or Wildcat SANDERS TANK -UPPER WOLFCAMP
---	--

12. Location	Unit Ltr	Section	Township	Range	Lot	Feet from the	N/S Line	Feet from the	E/W Line	County
Surface:	A	7	26S	33E		460	N	600	E	LEA
BH:	O	7	26S	33E		7.5	S	1645.7	E	LEA

13. Date Spudded 3/4/2020	14. Date T.D. Reached 5/2/2020	15. Date Rig Released 5/4/2020	16. Date Completed (Ready to Produce) 12/17/2020	17. Elevations (DF and RKB, RT, GR, etc.) 3347 GR
18. Total Measured Depth of Well 17,567'		19. Plug Back Measured Depth 17,541'		20. Was Directional Survey Made? YES
21. Type Electric and Other Logs Run MWD GAMMA RAY				

22. Producing Interval(s), of this completion - Top, Bottom, Name
 12,700' - 17,460' WOLFCAMP

23. CASING RECORD (Report all strings set in well)

CASING SIZE	WEIGHT LB./FT.	DEPTH SET	HOLE SIZE	CEMENTING RECORD	AMOUNT PULLED
10 3/4	40.5	915	14 3/4	630	
7 5/8	29.7	12,017	8 3/4	1645	
5 1/2	20	17,567	6 3/4	1370	
5	18	17,567	6 3/4	1370	

24. LINER RECORD				25. TUBING RECORD			
SIZE	TOP	BOTTOM	SACKS CEMENT	SCREEN	SIZE	DEPTH SET	PACKER SET

26. Perforation record (interval, size, and number) 12,700' - 17,460' 0.42 SIZE; 1,080 NUMBER HOLES	27. ACID, SHOT, FRACTURE, CEMENT, SQUEEZE, ETC. <table border="1" style="width:100%; border-collapse: collapse;"> <tr> <th>DEPTH INTERVAL</th> <th>AMOUNT AND KIND MATERIAL USED</th> </tr> <tr> <td>17,460'</td> <td>271,369 TOTAL FLUID; 11,427,150 #SAND</td> </tr> <tr> <td> </td> <td> </td> </tr> <tr> <td> </td> <td> </td> </tr> </table>	DEPTH INTERVAL	AMOUNT AND KIND MATERIAL USED	17,460'	271,369 TOTAL FLUID; 11,427,150 #SAND				
DEPTH INTERVAL	AMOUNT AND KIND MATERIAL USED								
17,460'	271,369 TOTAL FLUID; 11,427,150 #SAND								

28. PRODUCTION

Date First Production 12/17/2020		Production Method (<i>Flowing, gas lift, pumping - Size and type pump</i>) FLOWS FROM WELL			Well Status (<i>Prod. or Shut-in</i>) PRODUCING		
Date of Test 12/21/2020	Hours Tested 24	Choke Size 18/64	Prod'n For Test Period	Oil - Bbl 354	Gas - MCF 809	Water - Bbl. 2630	Gas - Oil Ratio
Flow Tubing Press. 4250	Casing Pressure	Calculated 24-Hour Rate	Oil - Bbl. 354	Gas - MCF 809	Water - Bbl. 2630	Oil Gravity - API - (<i>Corr.</i>)	

29. Disposition of Gas (<i>Sold, used for fuel, vented, etc.</i>) SOLD	30. Test Witnessed By
---	-----------------------

31. List Attachments

32. If a temporary pit was used at the well, attach a plat with the location of the temporary pit.	33. Rig Release Date:
--	-----------------------

34. If an on-site burial was used at the well, report the exact location of the on-site burial:

Latitude _____ Longitude _____ NAD83

I hereby certify that the information shown on both sides of this form is true and complete to the best of my knowledge and belief

Signature *Katy Reddell* Name KATY REDDELL Title REGULATORY ANALYST Date 12/23/2020

E-mail Address kreddell@btaoil.com

INSTRUCTIONS

This form is to be filed with the appropriate District Office of the Division not later than 20 days after the completion of any newly-drilled or deepened well and not later than 60 days after completion of closure. When submitted as a completion report, this shall be accompanied by one copy of all electrical and radio-activity logs run on the well and a summary of all special tests conducted, including drill stem tests. All depths reported shall be measured depths. In the case of directionally drilled wells, true vertical depths shall also be reported. For multiple completions, items 11, 12 and 26-31 shall be reported for each zone.

INDICATE FORMATION TOPS IN CONFORMANCE WITH GEOGRAPHICAL SECTION OF STATE

Southeastern New Mexico		Northwestern New Mexico	
T. Anhy_____	T. Canyon_4849	T. Ojo Alamo_____	T. Penn "A"_____
T. Salt_1895	T. Strawn_____	T. Kirtland_____	T. Penn. "B"_____
B. Salt_4550	T. Atoka_____	T. Fruitland_____	T. Penn. "C"_____
T. Yates_____	T. Miss_____	T. Pictured Cliffs_____	T. Penn. "D"_____
T. 7 Rivers_____	T. Devonian_____	T. Cliff House_____	T. Leadville_____
T. Queen_____	T. Silurian_____	T. Menefee_____	T. Madison_____
T. Grayburg_____	T. Montoya_____	T. Point Lookout_____	T. Elbert_____
T. San Andres_____	T. Simpson_____	T. Mancos_____	T. McCracken_____
T. Glorieta_____	T. McKee_____	T. Gallup_____	T. Ignacio Otzte_____
T. Paddock_____	T. Ellenburger_____	Base Greenhorn_____	T. Granite_____
T. Blinebry_____	T. Gr. Wash_____	T. Dakota_____	
T. Tubb_____	T. Delaware Sand_4824	T. Morrison_____	
T. Drinkard_____	T. Bone Springs_8999	T. Todilto_____	
T. Abo_____	T. _____	T. Entrada_____	
T. Wolfcamp__12037	T. _____	T. Wingate_____	
T. Penn_____	T. _____	T. Chinle_____	
T. Cisco (Bough C)_____	T. _____	T. Permian_____	

OIL OR GAS SANDS OR ZONES

No. 1, from.....to..... No. 3, from.....to.....
 No. 2, from.....to..... No. 4, from.....to.....

IMPORTANT WATER SANDS

Include data on rate of water inflow and elevation to which water rose in hole.

No. 1, from.....to.....feet.....
 No. 2, from.....to.....feet.....
 No. 3, from.....to.....feet.....

LITHOLOGY RECORD (Attach additional sheet if necessary)

From	To	Thickness In Feet	Lithology	From	To	Thickness In Feet	Lithology

--	--	--	--	--	--	--	--	--	--

District I
 1625 N. French Dr., Hobbs, NM 88240
 Phone:(575) 393-6161 Fax:(575) 393-0720

District II
 811 S. First St., Artesia, NM 88210
 Phone:(575) 748-1283 Fax:(575) 748-9720

District III
 1000 Rio Brazos Rd., Aztec, NM 87410
 Phone:(505) 334-6178 Fax:(505) 334-6170

District IV
 1220 S. St Francis Dr., Santa Fe, NM 87505
 Phone:(505) 476-3470 Fax:(505) 476-3462

State of New Mexico
Energy, Minerals and Natural Resources
Oil Conservation Division
1220 S. St Francis Dr.
Santa Fe, NM 87505

ACKNOWLEDGMENTS

Action 34756

ACKNOWLEDGMENTS

Operator: BTA OIL PRODUCERS, LLC 104 S Pecos Midland, TX 79701	OGRID: 260297
	Action Number: 34756
	Action Type: [C-104] Completion Packet (C-104C)

ACKNOWLEDGMENTS

<input checked="" type="checkbox"/>	I hereby certify that the required Water Use Report has been, or will be, submitted for this wells completion.
<input checked="" type="checkbox"/>	I hereby certify that the required FracFocus disclosure has been, or will be, submitted for this wells completion.

District I
 1625 N. French Dr., Hobbs, NM 88240
 Phone:(575) 393-6161 Fax:(575) 393-0720

District II
 811 S. First St., Artesia, NM 88210
 Phone:(575) 748-1283 Fax:(575) 748-9720

District III
 1000 Rio Brazos Rd., Aztec, NM 87410
 Phone:(505) 334-6178 Fax:(505) 334-6170

District IV
 1220 S. St Francis Dr., Santa Fe, NM 87505
 Phone:(505) 476-3470 Fax:(505) 476-3462

State of New Mexico
Energy, Minerals and Natural Resources
Oil Conservation Division
1220 S. St Francis Dr.
Santa Fe, NM 87505

CONDITIONS
 Action 34756

CONDITIONS

Operator: BTA OIL PRODUCERS, LLC 104 S Pecos Midland, TX 79701	OGRID: 260297
	Action Number: 34756
	Action Type: [C-104] Completion Packet (C-104C)

CONDITIONS

Created By	Condition	Condition Date
ksimmons	None	8/23/2021