

Well Name: NEAH VICTORIA	Well Location: T27N / R9W / SEC 1 / SENE / 36.607239 / -107.733017	County or Parish/State: SAN JUAN / NM
Well Number: 2	Type of Well: CONVENTIONAL GAS WELL	Allottee or Tribe Name: EASTERN NAVAJO
Lease Number: I149IND8463	Unit or CA Name:	Unit or CA Number:
US Well Number: 3004506876	Well Status: Gas Well Shut In	Operator: ENDURING RESOURCES LLC

Subsequent Report

Type of Submission: Subsequent Report

Type of Action: Plug and Abandonment

Date Sundry Submitted: 06/29/2021

Time Sundry Submitted: 11:49

Date Operation Actually Began: 06/17/2021

Actual Procedure: This well was plugged and abandoned on 6/18/21. Updated wellbore diagram is attached w/ plug summary. 6/17/2021- NMOCD & BLM notified on 6/14/2021 of intent to start P&A operations on 6/15/2021. MIRU DWS Rig #29. TOO H w/tbg. TIH w/bit & scraper. TOO H. Set CR. Roll hole. BLM Representative Darrell Priddy on location to witness P&A operations. 6/18/2021- Run CBL from 1,978' to surface (TOC @ 850'). Pump P&A Cement Plugs #1 (Perforations, Fruitland Top) & #2 (Ojo Alamo Top & Kirtland Top). Perforate squeeze holes @ 236'. Pump P&A Cement Plug #3 (surface casing shoe & surface). Cut off wellhead. Install P&A marker. RD DWS Rig #29. BLM Representative Darrell Priddy on location to witness P&A operations.

SR Attachments

Actual Procedure

NEAH_VICTORIA_002_P_A_WBD_06182021_20210629114841.pdf

County or Parish/State: SAN JUAN / NM

Allottee or Tribe Name:
EASTERN NAVAJO

Unit or CA Number:

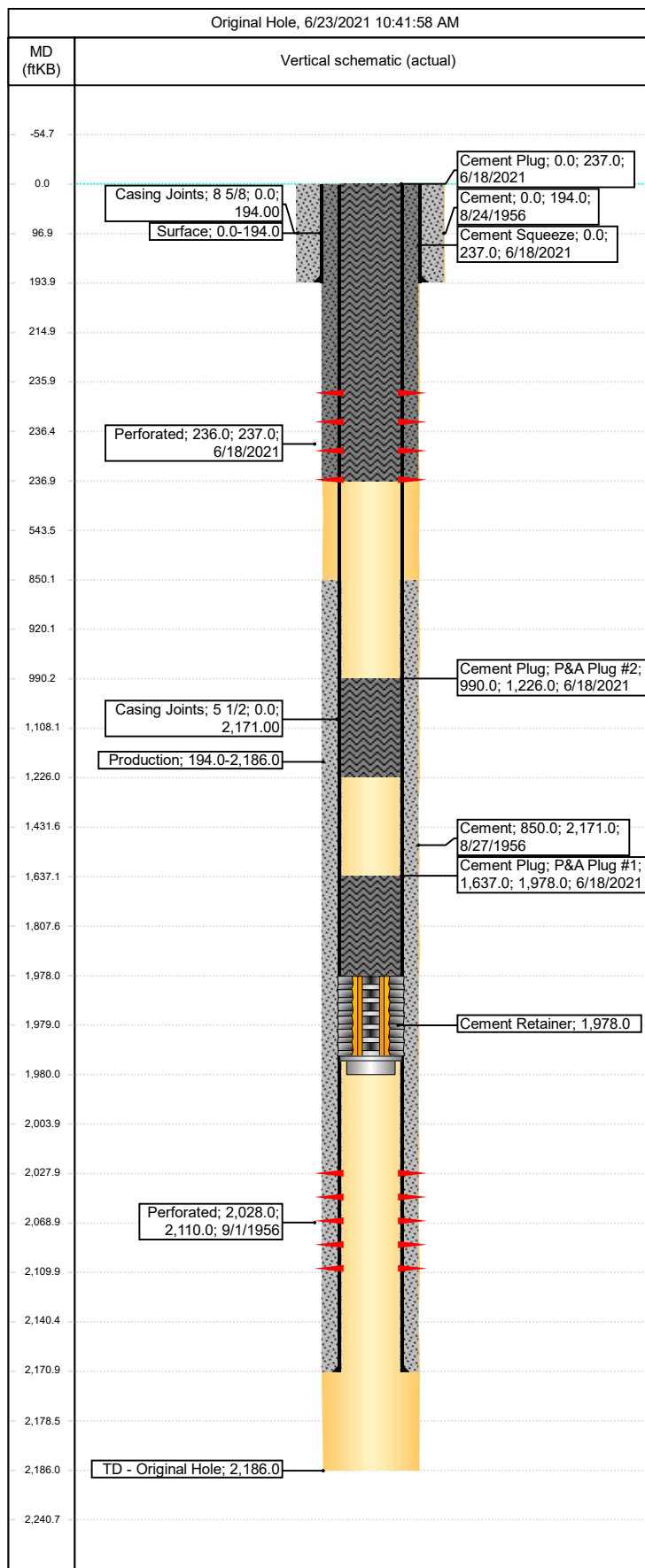
Operator: ENDURING
RESOURCES LLC



Enduring Resources IV - P&A WBD

Well Name: neah-victoria 2

API/UWI 30-045-06876	Surface Legal Location	Field Name blanco south	License #	State/Province New Mexico	Well Configuration Type
Original KB Elevation (ft) 5,875.00	KB-Tubing Head Distance (ft)	Spud Date 8/24/1956 00:00	Rig Release Date	PBTD (All) (ftKB)	Total Depth All (TVD) (ftKB)



Wellbore Sections					
Section Description	Size (in)	Act Top (ft...	Act Top (T...	Act Btm (ft...	Act Btm (T...
Surface	12 1/4	0.0		194.0	
Section Description	Size (in)	Act Top (ft...	Act Top (T...	Act Btm (ft...	Act Btm (T...
Production	7 7/8	194.0		2,186.0	
Surface, 194.0ftKB					
OD (in)	Wt/Len (lb/ft)	String Grade	Top Connection	Top (ftKB)	Set Depth (ftKB)
8 5/8	32.00	K-55		0.0	194.0
Item Des		Jts	Len (ft)	Top (ftKB)	Btm (ftKB)
Casing Joints			194.00	0.0	194.0
Production, 2,171.0ftKB					
OD (in)	Wt/Len (lb/ft)	String Grade	Top Connection	Top (ftKB)	Set Depth (ftKB)
5 1/2	15.50	J-55		0.0	2,171.0
Item Des		Jts	Len (ft)	Top (ftKB)	Btm (ftKB)
Casing Joints			2,171.00	0.0	2,171.0
Other In Hole					
Description	Run Date	Top (ftKB)	Btm (ftKB)	Comment	
Cement Retainer	6/17/2021	1,978.0	1,980.0	CR for Plug #1	
Cement					
Surface Casing Cement, Casing, 8/24/1956 00:00					
Comment primary surface casing cementing			Cementing Start Date 8/24/1956	Cementing End Date 8/24/1956	
Top Depth (ftKB) 0.0		Bottom Depth (ftKB) 194.0			
Production Casing Cement, Casing, 8/27/1956 00:00					
Comment primary production casing cement			Cementing Start Date 8/27/1956	Cementing End Date 8/27/1956	
TOC measured at 850' (CBL 06/18/2021)					
Top Depth (ftKB) 850.0		Bottom Depth (ftKB) 2,171.0			
Cement Plug, Plug, 6/18/2021 09:45					
Comment PLUG #1: Pictured Cliffs Perfs, Pictured Cliffs Top, Fruitland Top (34 sx)			Cementing Start Date 6/18/2021	Cementing End Date 6/18/2021	
Top Depth (ftKB) 1,637.0		Bottom Depth (ftKB) 1,978.0			
Cement Plug, Plug, 6/18/2021 11:00					
Comment PLUG #2: Kirtland Top, Ojo Alamo Top (23 sx)			Cementing Start Date 6/18/2021	Cementing End Date 6/18/2021	
Top Depth (ftKB) 990.0		Bottom Depth (ftKB) 1,226.0			
Cement Squeeze, Casing - Remedial, 6/18/2021 14:00					
Comment Plug #3: Surface Casing Shoe, Surface (84 sx total)			Cementing Start Date 6/18/2021	Cementing End Date 6/18/2021	
Top Depth (ftKB) 0.0		Bottom Depth (ftKB) 237.0			
Cement Plug, Plug, 6/18/2021 14:00					
Comment Plug #3: Surface Casing Shoe, Surface (84 sx total)			Cementing Start Date 6/18/2021	Cementing End Date 6/18/2021	
Top Depth (ftKB) 0.0		Bottom Depth (ftKB) 237.0			

District I
1625 N. French Dr., Hobbs, NM 88240
Phone:(575) 393-6161 Fax:(575) 393-0720
District II
811 S. First St., Artesia, NM 88210
Phone:(575) 748-1283 Fax:(575) 748-9720
District III
1000 Rio Brazos Rd., Aztec, NM 87410
Phone:(505) 334-6178 Fax:(505) 334-6170
District IV
1220 S. St Francis Dr., Santa Fe, NM 87505
Phone:(505) 476-3470 Fax:(505) 476-3462

State of New Mexico
Energy, Minerals and Natural Resources
Oil Conservation Division
1220 S. St Francis Dr.
Santa Fe, NM 87505

CONDITIONS

Action 41781

CONDITIONS

Operator: ENDURING RESOURCES, LLC 6300 S Syracuse Way, Suite 525 Centennial, CO 80111	OGRID: 372286
	Action Number: 41781
	Action Type: [C-103] Sub. Plugging (C-103P)

CONDITIONS

Created By	Condition	Condition Date
mkuehling	None	9/2/2021