

**District I**  
1625 N. French Dr., Hobbs, NM 88240  
Phone: (575) 393-6161 Fax: (575) 393-0720

**District II**  
811 S. First St., Artesia, NM 88210  
Phone: (575) 748-1283 Fax: (575) 748-9720

**District III**  
1000 Rio Brazos Road, Aztec, NM 87410  
Phone: (505) 334-6178 Fax: (505) 334-6170

**District IV**  
1220 S. St. Francis Dr., Santa Fe, NM 87505  
Phone: (505) 476-3460 Fax: (505) 476-3462

**State of New Mexico**  
**Energy Minerals and Natural Resources**  
**Oil Conservation Division**  
**1220 South St. Francis Dr.**  
**Santa Fe, NM 87505**

Form C-101  
Revised July 18, 2013

☐ AMENDED REPORT

### APPLICATION FOR PERMIT TO DRILL, RE-ENTER, DEEPEN, PLUGBACK, OR ADD A ZONE

<sup>1</sup> Operator Name and Address Occidental Permian LTD PO Box 4294 Houston, TX 77210		<sup>2</sup> OGRID Number 157984
		<sup>3</sup> API Number 30-025-36775
<sup>4</sup> Property Code 330178	<sup>5</sup> Property Name W D GRIMES NCT A	<sup>6</sup> Well No. 027

#### 7. Surface Location

UL - Lot F	Section 32	Township 18S	Range 38E	Lot Idn	Feet from 2176'	N/S Line NORTH	Feet From 1444'	E/W Line WEST	County LEA
---------------	---------------	-----------------	--------------	---------	--------------------	-------------------	--------------------	------------------	---------------

#### 8. Proposed Bottom Hole Location

UL - Lot	Section	Township	Range	Lot Idn	Feet from	N/S Line	Feet From	E/W Line	County
----------	---------	----------	-------	---------	-----------	----------	-----------	----------	--------

#### 9. Pool Information

Pool Name HOBBS;GRAYBURG-SAN ANDRES	Pool Code 31920
--	--------------------

#### Additional Well Information

<sup>11</sup> Work Type PLUG BACK/CTI	<sup>12</sup> Well Type OIL/CONVERT TO INJECTION	<sup>13</sup> Cable/Rotary	<sup>14</sup> Lease Type FEE	<sup>15</sup> Ground Level Elevation 3633'
<sup>16</sup> Multiple NO	<sup>17</sup> Proposed Depth PBSD @ +/- 5736'	<sup>18</sup> Formation SAN ANDRES	<sup>19</sup> Contractor	<sup>20</sup> Spud Date 11/20/2021
Depth to Ground water		Distance from nearest fresh water well		Distance to nearest surface water

☒ We will be using a closed-loop system in lieu of lined pits

#### 21. Proposed Casing and Cement Program

Type	Hole Size	Casing Size	Casing Weight/ft	Setting Depth	Sacks of Cement	Estimated TOC
SURF	12 1/4"	8 5/8"	24	1500	750	SURF
PROD	7 7/8"	5 1/2"	15.5, 17	6056	1955	SURF

#### Casing/Cement Program: Additional Comments

Plugback to Grayburg/San Andres and CTI. C108 Approval 10/28/21 Administrative Order PMX-297 (OCD Order R-6199)

#### 22. Proposed Blowout Prevention Program

Type	Working Pressure	Test Pressure	Manufacturer
ANNULAR	5000	3000	

<sup>23</sup> I hereby certify that the information given above is true and complete to the best of my knowledge and belief. I further certify that I have complied with 19.15.14.9 (A) NMAC <input checked="" type="checkbox"/> and/or 19.15.14.9 (B) NMAC <input checked="" type="checkbox"/> , if applicable. Signature: <i>Roni Mathew</i>		<b>OIL CONSERVATION DIVISION</b>	
Printed name: Roni Mathew		Approved By:	
Title: Regulatory Analyst Sr.		Title:	
E-mail Address: roni_mathew@oxy.com		Approved Date:	Expiration Date:
Date: 11/1/2021	Phone: 713-215-7827	Conditions of Approval Attached	

District I  
1625 N. French Dr., Hobbs, NM 88240  
Phone: (575) 393-6161 Fax: (575) 393-0720  
District II  
811 S. First St., Artesia, NM 88210  
Phone: (575) 748-1283 Fax: (575) 748-9720  
District III  
1000 Rio Brazos Road, Aztec, NM 87410  
Phone: (505) 334-6178 Fax: (505) 334-6170  
District IV  
1220 S. St. Francis Dr., Santa Fe, NM 87505  
Phone: (505) 476-3460 Fax: (505) 476-3462

State of New Mexico  
Energy, Minerals & Natural Resources Department  
OIL CONSERVATION DIVISION  
1220 South St. Francis Dr.  
Santa Fe, NM 87505

Form C-102  
Revised August 1, 2011  
Submit one copy to appropriate  
District Office  
☐ AMENDED REPORT

## WELL LOCATION AND ACREAGE DEDICATION PLAT

<sup>1</sup> API Number 30-025-36775	<sup>2</sup> Pool Code 31920	<sup>3</sup> Pool Name HOBBS; GRAYBURG-SAN ANDRES
<sup>4</sup> Property Code 330178	<sup>5</sup> Property Name W D GRIMES NCT A	<sup>6</sup> Well Number 027
<sup>7</sup> OGRID No. 157984	<sup>8</sup> Operator Name OCCIDENTAL PERMIAN LTD.	<sup>9</sup> Elevation 3633' GL

<sup>10</sup> Surface Location

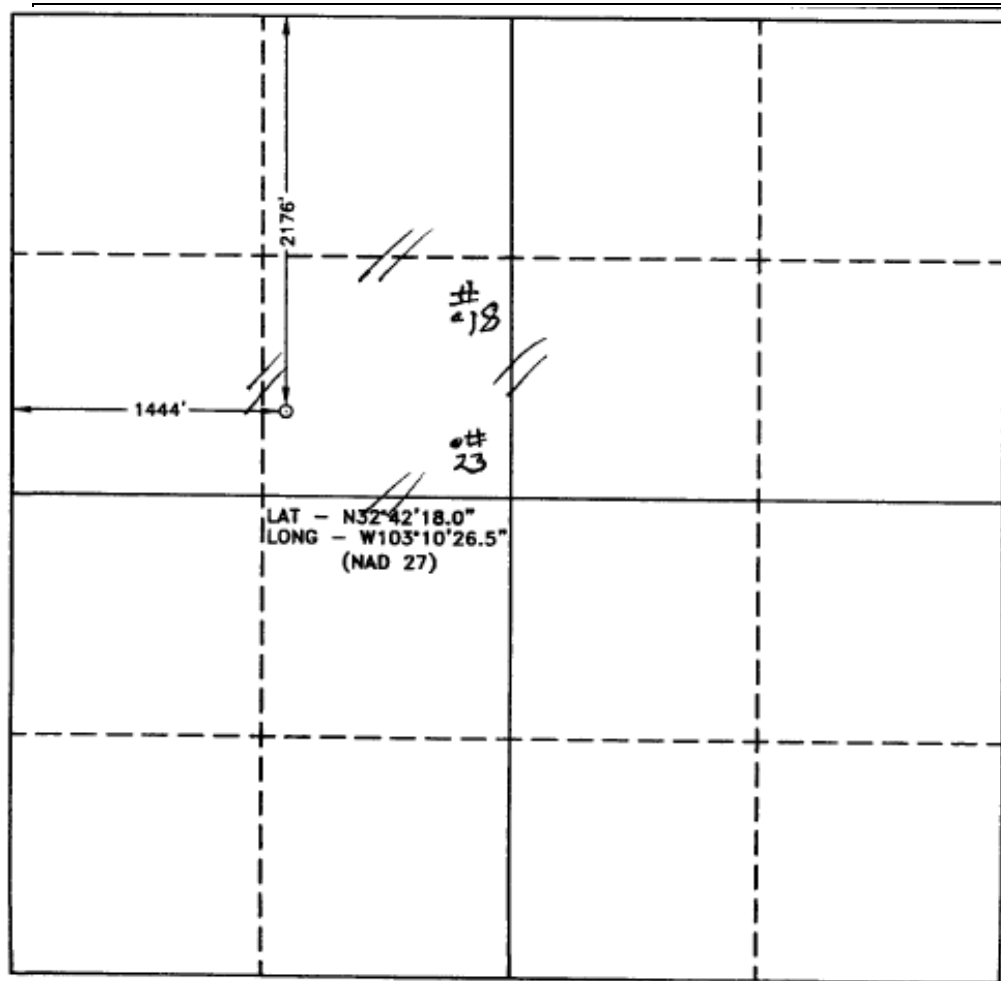
UL or lot no.	Section	Township	Range	Lot Idn	Feet from the	North/South line	Feet from the	East/West line	County
F	32	18S	38E		2176'	NORTH	1444'	WEST	LEA

<sup>11</sup> Bottom Hole Location If Different From Surface

UL or lot no.	Section	Township	Range	Lot Idn	Feet from the	North/South line	Feet from the	East/West line	County

<sup>12</sup> Dedicated Acres 40	<sup>13</sup> Joint or Infill	<sup>14</sup> Consolidation Code	<sup>15</sup> Order No.
-------------------------------------	-------------------------------	----------------------------------	-------------------------

No allowable will be assigned to this completion until all interests have been consolidated or a non-standard unit has been approved by the division.

<sup>17</sup> OPERATOR CERTIFICATION

I hereby certify that the information contained herein is true and complete to the best of my knowledge and belief, and that this organization either owns a working interest or unleased mineral interest in the land including the proposed bottom hole location or has a right to drill this well at this location pursuant to a contract with an owner of such a mineral or working interest, or to a voluntary pooling agreement or a compulsory pooling order heretofore entered by the division.

*Roni Mathew*

11/1/2021

Signature

Date

Roni Mathew

Printed Name

roni\_mathew@oxy.com

E-mail Address

<sup>18</sup> SURVEYOR CERTIFICATION

I hereby certify that the well location shown on this plat was plotted from field notes of actual surveys made by me or under my supervision, and that the same is true and correct to the best of my belief.

Date of Survey

Signature and Seal of Professional Surveyor:

Certificate Number

# INSTRUCTIONS

This form is to be filed with the appropriate District Office of the Division not later than 20 days after the completion of any newly-drilled or deepened well. It shall be accompanied by one copy of all electrical and radio-activity logs run on the well and a summary of all special tests conducted, including drill stem tests. All depths reported shall be measured depths. In the case of directionally drilled wells, true vertical depths shall also be reported. For multiple completions, items 25 through 29 shall be reported for each zone. The form is to be filed in quintuplicate except on state land, where six copies are required. See Rule 1105.

## INDICATE FORMATION TOPS IN CONFORMANCE WITH GEOGRAPHICAL SECTION OF STATE

Southeastern New Mexico		Northwestern New Mexico	
T. Anhy	T. Canyon	T. Ojo Alamo	T. Penn. "B"
T. Salt	T. Strawn	T. Kirtland-Fruitland	T. Penn. "C"
B. Salt	T. Atoka	T. Pictured Cliffs	T. Penn. "D"
T. Yates	T. Miss	T. Cliff House	T. Leadville
T. 7 Rivers	T. Devonian	T. Menefee	T. Madison
T. Queen	T. Silurian	T. Point Lookout	T. Elbert
T. Grayburg	T. Montoya	T. Mancos	T. McCracken
T. San Andres	T. Simpson	T. Gallup	T. Ignacio Otzte
T. Glorieta 5328	T. McKee	Base Greenhorn	T. Granite
T. Paddock	T. Ellenburger	T. Dakota	T.
T. Blinebry 5748	T. Gr. Wash	T. Morrison	T.
T. Tubb	T. Delaware Sand	T. Todilto	T.
T. Drinkard	T. Bone Springs	T. Entrada	T.
T. Abo	T.	T. Wingate	T.
T. Wolfcamp	T.	T. Chinle	T.
T. Penn	T.	T. Permian	T.
T. Cisco (Bough C)	T.	T. Penn "A"	T.

## OIL OR GAS SANDS OR ZONES

No. 1, from.....to.....  
No. 2, from.....to.....  
No. 3, from.....to.....  
No. 4, from.....to.....

## IMPORTANT WATER SANDS

Include data on rate of water inflow and elevation to which water rose in hole.

No. 1, from.....to.....feet.....  
No. 2, from.....to.....feet.....  
No. 3, from.....to.....feet.....

## LITHOLOGY RECORD (Attach additional sheet if necessary)

From	To	Thickness In Feet	Lithology	From	To	Thickness In Feet	Lithology
0	1410		Red Beds				
	1520		Redbeds ÷ anhydrite				
	3000		salt ÷ anhydrite				
	3156		dolomite				
	6056		dolomite				

INSTRUCTIONS

This form is to be filed with the appropriate District Office of the Commission not later than 20 days after the completion of any newly-drilled or deepened well. It shall be accompanied by one copy of all electrical and radio-activity logs run on the well and a summary of all special tests conducted, including drill stem tests. All depths reported shall be measured depths. In the case of directionally drilled wells, true vertical depths shall also be reported. For multiple completions, Items 30 through 34 shall be reported for each zone. The form is to be filed in quintuplicate except on state land, where six copies are required. See Rule 11.5.

INDICATE FORMATION TOPS IN CONFORMANCE WITH GEOGRAPHICAL SECTION OF STATE

Southeastern New Mexico				Northwestern New Mexico			
T. Anhy	1470	T. Canyon		T. Ojo Alamo		T. Penn. "B"	
T. Salt		T. Strawn		T. Kirtland-Fruitland		T. Penn. "C"	
B. Salt		T. Atoka		T. Pictured Cliffs		T. Penn. "D"	
T. Yates	2655	T. Miss		T. Cliff House		T. Leadville	
T. 7 Rivers		T. Devonian		T. Menefee		T. Madison	
T. Queen	3336	T. Silurian		T. Point Lookout		T. Elbert	
T. Grayburg		T. Montoya		T. Mancos		T. McCracken	
T. San Andres	4015	T. Simpson		T. Gallup		T. Ignacio Qtzte	
T. Glorieta	5334	T. McKee		Base Greenhorn		T. Granite	
T. Paddock		T. Ellersburger		T. Dakota		T.	
T. Blinberry	5752	T. Gr. Wash		T. Morrison		T.	
T. Tubb		T. Granite		T. Todilto		T.	
T. Drinkard		T. Delaware Sand		T. Entrada		T.	
T. Abo		T. Bone Springs		T. Wingate		T.	
T. Wolfcamp		T.		T. Chinle		T.	
T. Penn.		T.		T. Permian		T.	
T. Cisco (Bough C)		T.		T. Penn. "A"		T.	

FORMATION RECORD (Attach additional sheets if necessary)

From	To	Thickness in Feet	Formation	From	To	Thickness in Feet	Formation
0	1470		Sand - RD				
	1590		Anhy				
	2485		Salt				
	2655		Anhy, Dolo & Salt				
	4015		Dolo & sand				
	5334		Dolo				
	5500		Dolo & sand				
	6020		Dolo.				

**W D GRIMES NCT A #027**  
**API # 30-025-36775**

Planned Procedure

Operation:

- RUPU, NDWH-NUBOP
- RIH with open ended tubing, tag PBTD @ +/- 5736'
- RU Cement trucks and spot ~ 100 sxs on top of capped CIBP. POOH with WS, RD Cement Trucks
- RU WL tag TOC (TOC should be ~ 4500' – Bottom of the North Hobbs Unit unitized interval) dump bail cement as needed.
- Perf interval as following:
  - 4240' - 4250', 4260' - 4270', 4280' - 4290', 4300' - 4310', 4320' - 4330', 4340' - 4350', 4360' - 4370', 4380' - 4390', 4400' - 4410', 4420' - 4430', 4440' - 4450', 4460' - 4470', 4480' - 4490' (4-JSPF) RD WL
- RIH with PPI tool and acid stimulate new perf with ~ 6000 gals of 15\$ HCL IC 200. POOH and LD PPI Tool
- RIH with injection packer and set @ 4200'.
- Circulate packer Fluid and POOH LD WS
- RU WL and Run CBL with @ 500 psi pressure on casing (AS REQUESTED PER Administrative Order PMX-297) RD WL
- PU and RIH with 2-7/8" duoline injection tubing, latch into packer
- ND BOP-NU WH
- Perform MIT for NMOCD
- RDPU

## WELLBORE DIAGRAM

(updated: 02/25/2021 CER)

Revision 0

WELL# **Grimes NCT-A #27**  
 API# **30-025-36775**  
 Location: **F-32-18S-38E 2176 FNL 1444 FWL**  
 Zone: **San Andres**  
 Spud: **11/2004**

GL elev **3633'**  
 Kb elev **3639'**

## Grimes NCT-A #27

CEMENT

DEVIATION SURVEYS

DEPTH

DEGREE

Surface Casing

Cement with 550 sx Halliburton Light P+  
 and 200 sx Premium +

CIRCULATED TO SURFACE

12-1/4" hole

Intermediate Casing

Cement with 375 sx Class C w/ 2.5% salt, 0.4% LAP1, 0.3% CFR-  
 3 and 230 sxs of IFILLIC, 0.25# CelloFlake and 300 sx class C,  
 0.5% LAP1, 0.2% CFR3 and 1000 sx IFILLIC, 0.25# Cell Flake and  
 50 sxs Class C

CIRCULATED TO SURFACE

8-5/8" 24# set at 1500'

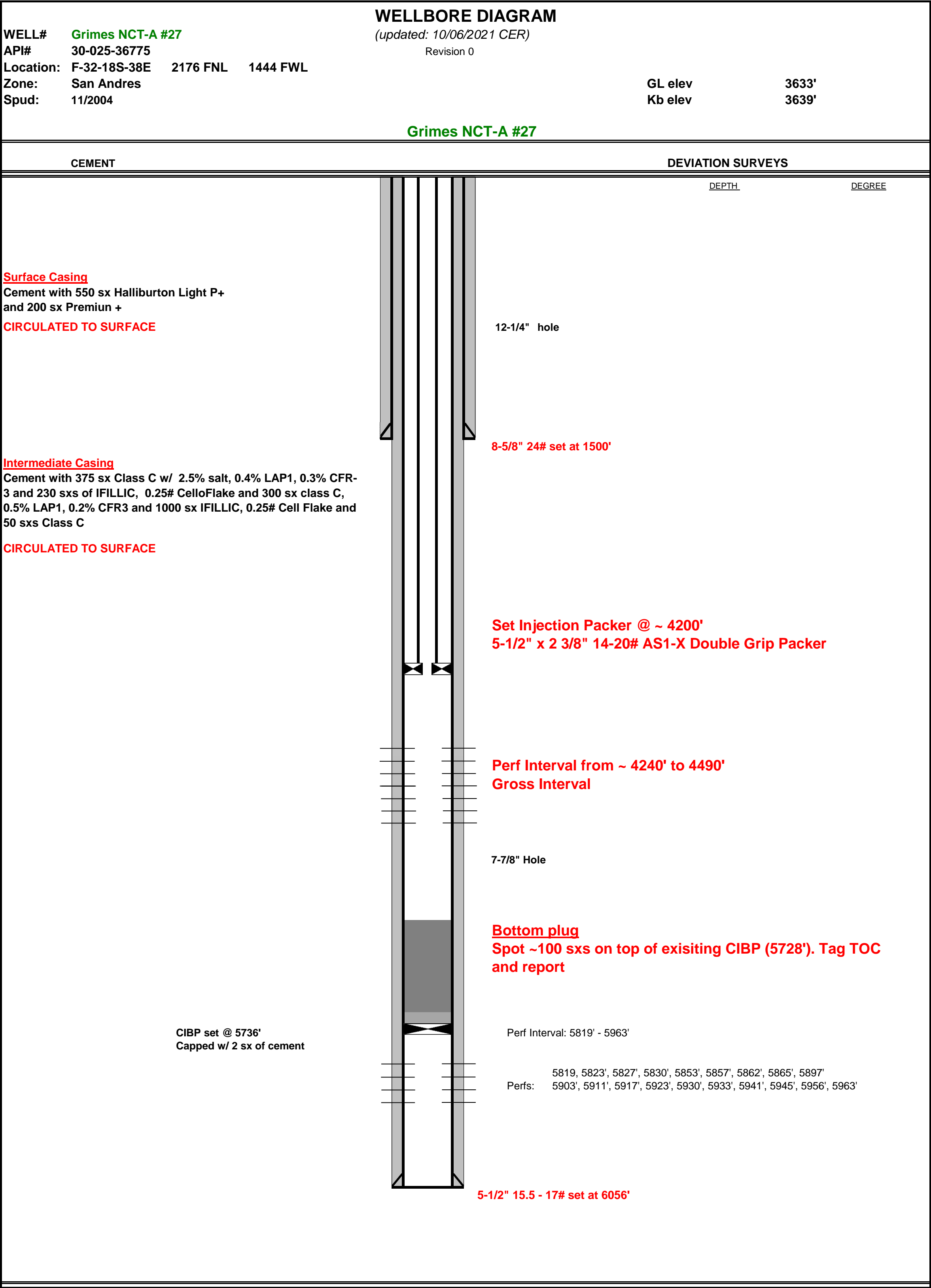
7-7/8" Hole

CIBP set @ 5736'  
 Capped w/ 2 sx of cement

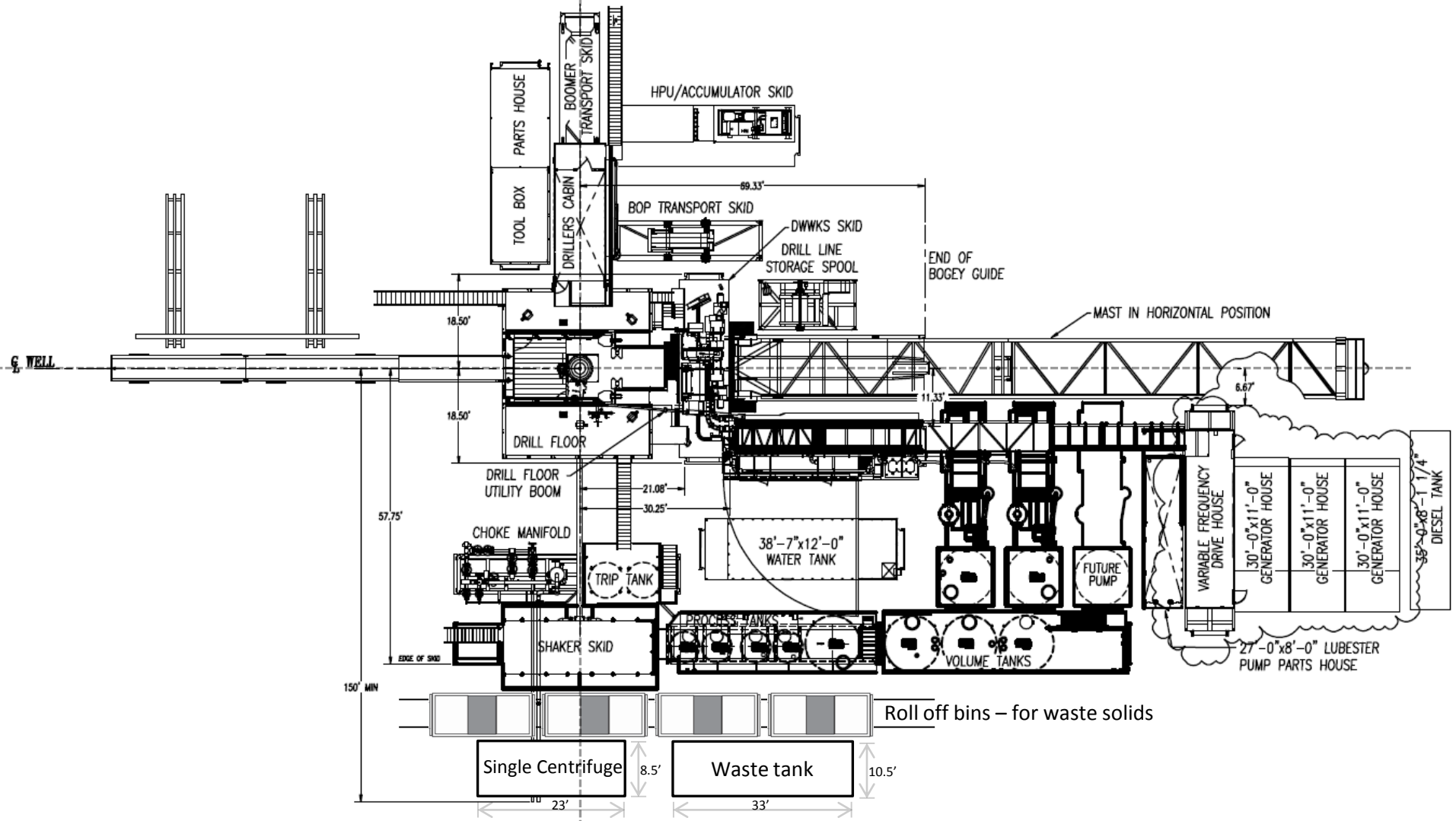
Perf Interval: 5819' - 5963'

5819, 5823', 5827', 5830', 5853', 5857', 5862', 5865', 5897'  
 Perfs: 5903', 5911', 5917', 5923', 5930', 5933', 5941', 5945', 5956', 5963'

5-1/2" 15.5 - 17# set at 6056'

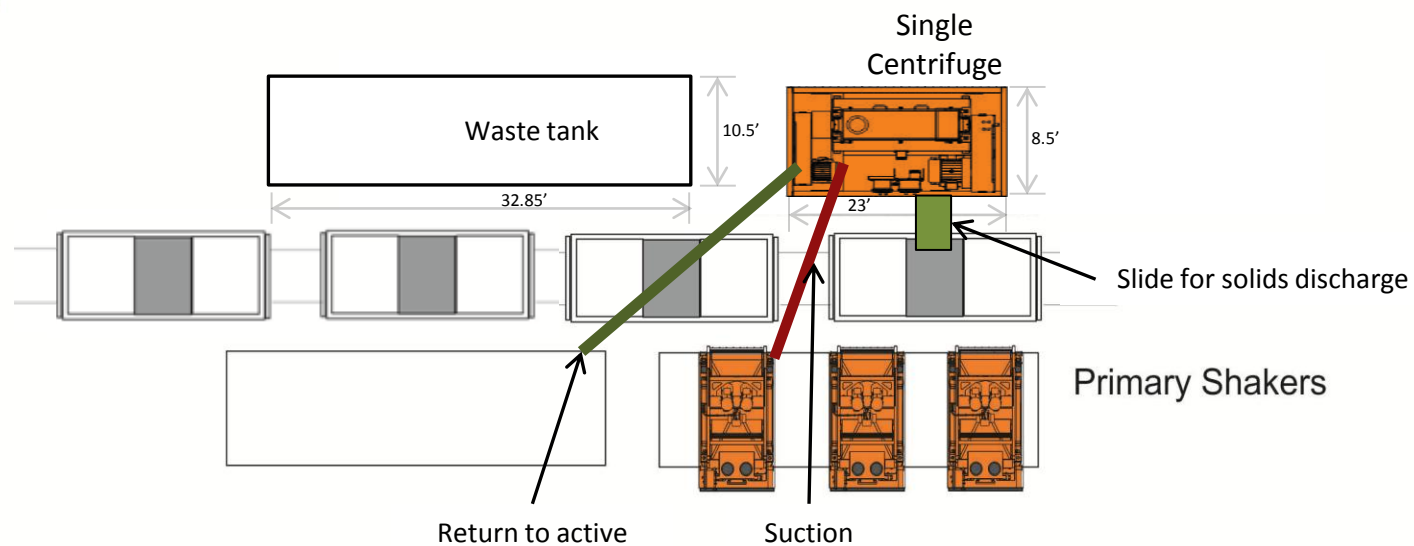


Oxy Single Centrifuge  
Closed Loop System – New  
Mexico Flex III  
May 28, 2013



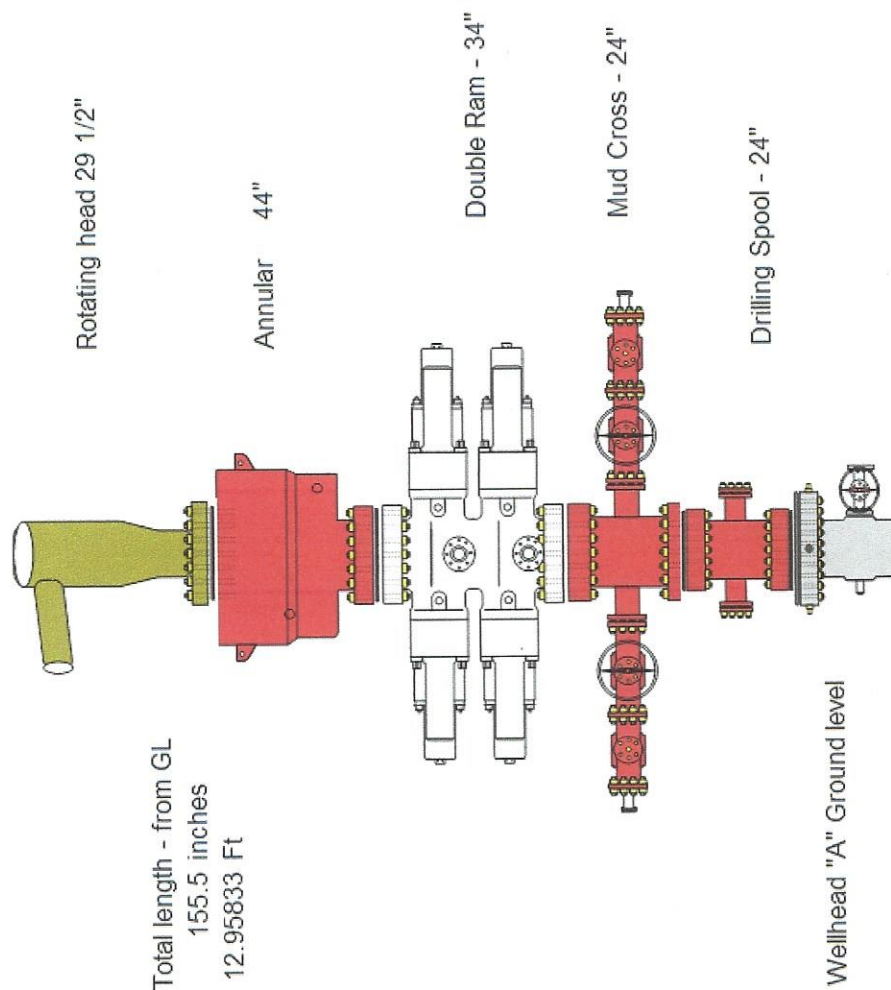


Oxy



Oxy Single Centrifuge  
Closed Loop System – New  
Mexico Flex III  
May 28, 2013

# Current BOP heights – 11" 5K



**District I**  
1625 N. French Dr., Hobbs, NM 88240  
Phone:(575) 393-6161 Fax:(575) 393-0720  
**District II**  
811 S. First St., Artesia, NM 88210  
Phone:(575) 748-1283 Fax:(575) 748-9720  
**District III**  
1000 Rio Brazos Rd., Aztec, NM 87410  
Phone:(505) 334-6178 Fax:(505) 334-6170  
**District IV**  
1220 S. St Francis Dr., Santa Fe, NM 87505  
Phone:(505) 476-3470 Fax:(505) 476-3462

**State of New Mexico**  
**Energy, Minerals and Natural Resources**  
**Oil Conservation Division**  
**1220 S. St Francis Dr.**  
**Santa Fe, NM 87505**

COMMENTS  
  
Action 58743

COMMENTS

Operator: OCCIDENTAL PERMIAN LTD P.O. Box 4294 Houston, TX 772104294	OGRID: 157984
	Action Number: 58743
	Action Type: [C-101] Drilling Non-Federal/Indian (APD)

COMMENTS

Created By	Comment	Comment Date
pkautz	Hold for corrected forms	11/1/2021

**District I**  
1625 N. French Dr., Hobbs, NM 88240  
Phone:(575) 393-6161 Fax:(575) 393-0720  
**District II**  
811 S. First St., Artesia, NM 88210  
Phone:(575) 748-1283 Fax:(575) 748-9720  
**District III**  
1000 Rio Brazos Rd., Aztec, NM 87410  
Phone:(505) 334-6178 Fax:(505) 334-6170  
**District IV**  
1220 S. St Francis Dr., Santa Fe, NM 87505  
Phone:(505) 476-3470 Fax:(505) 476-3462

**State of New Mexico**  
**Energy, Minerals and Natural Resources**  
**Oil Conservation Division**  
**1220 S. St Francis Dr.**  
**Santa Fe, NM 87505**

CONDITIONS  
  
Action 58743

CONDITIONS

Operator: OCCIDENTAL PERMIAN LTD P.O. Box 4294 Houston, TX 772104294	OGRID: 157984
	Action Number: 58743
	Action Type: [C-101] Drilling Non-Federal/Indian (APD)

CONDITIONS

Created By	Condition	Condition Date
pkautz	None	11/1/2021