

Shawna Martinez

From: AFMSS <blm-afmss-notifications@blm.gov>
Sent: Tuesday, November 23, 2021 9:15 AM
To: Shawna Martinez
Cc: mwientjes@blm.gov
Subject: Well Name: CANDADO, Well Number: 13, Notification of Sundry Accepted



Notice of Subsequent Report Approval

- Operator Name: **EPIC ENERGY LLC**
- Well Name: **CANDADO**
- Well Number: **13**
- US Well Number: **300390674400S1**
- Sundry ID: **2643541**

The BLM received your Subsequent Report, Plug and Abandonment on 11/08/2021. This is to notify you that we are Accepting your Subsequent Report Plug and Abandonment. Please login to your account in AFMSS II to see the final documents.

You may contact the field office if you have any questions.

This notification is automatically generated. Please do not reply to this message as this account is not monitored.

EPIC Energy

Well Name: Candado #13

(Sec A4/T26N/7W)

API: 30-039-06744

The following is a summary of the P&A on the Candado #13 between– October 14th - October 18th, 2021.

Epic Energy, LLC			Candado #13			Date Completed	10/18/2021
Plug #	Formation	BLM Pick Formation Top	Perfs	CICR Depth	Cement Detail	Cement Plug Depths	Plug Position
1	Pictured Cliffs	PC-2851'	Open Hole 2858' - 2938'	2828'	12sx Type III cement w/ 2% CaCl ₂ (16.4cuft, 2.9bbls, 1.37yld, 14.6ppg)	2694' - 2828'	Inside
2	Fruitland	FC-2580'	N/A	N/A	20sx Type III cement w/ 3% CaCl ₂ (27.4cuft, 4.9bbl, 1.37yld, 14.6ppg, 6.64gps)	2427' - 2633'	Inside
3	Kirtland/Ojo Alamo	Kirt-2216' Ojo-2066'	N/A	N/A	50sx Type III cement (68.5cuft, 12.23bbl, 1.37yld, 14.6ppg)	1871' - 2280'	Inside
4	Nacimiento	Naci-685'	735'	682'	48sx Class "G" cement (55.2cuft, 9.86bbl, 1.15yld, 15.8ppg, 5.0gps)	579'-735'	Inside/Outside
5	Surface (San Jose)	Surface	148' 9-5/8" csg=98'	N/A	107sx Class "G" cement (123cuft, 22bbl, 1.15yld, 15.8ppg, 5.0gps)	Surface - 148'	Inside/Outside

Note:

Plug #1 (Pictured Cliffs) -2705'-2828' - Set retainer at 2828'KB, P/T tbg to 1200psi, good. Stung out and circulated csg clean with 67bbls of water. Stung into retainer. Est inj rate below retainer at 0.5bpm at 1000psi, pressure climbing quickly. Discussed w/ BLM personnel on location (Jimmie Dobson) and decided to forgo cement below retainer (possibility of lock-up w/ no option to reverse w/ csg leak). Stung out of retainer. Est circulation w/ additional 7bbls. M&P 12sx Type III cement (16.4cuft, 2.94bbl, 1.37yld, 14.6ppg), balanced w/ 10bbl of water. RU TWG wireline. Ran CBL F/ 2705' (tag) T/ surf (couldn't get CBL from 220', couldn't keep fluid on tools). Found Free pipe F/ surf - T/ 900', 60-70mv bond F/ 900' - T/ 1800', 80mv+ bond F/ 1800' - T/ 2150', 99-100mv bond F/ 2150' - T/ 2700'. Tagged TOC at 2694'KB.

Plug #2 (Fruitland--2427'-2633') - Plug #2 (Fruitland--2427'-2633'): M&P 20sx Type III cement w/ 3% CaCl₂ (27.4cuft, 4.9bbl, 1.37yld, 14.6ppg), balanced w/ 9bbl of water(1200hrs). LD 7jts and TOH w/ tag sub. WOC 3hrs. TIH and tagged TOC at 2427'KB.

Plug #3 (Kirtland/Ojo Alamo- 1871'-2280')- M&P 50sx Type III cement (68.5cuft, 12.23bbl, 1.37yld, 14.6ppg), balanced w/ 6.5bbls(1800hrs). TIH & tagged TOC at 1871'KB

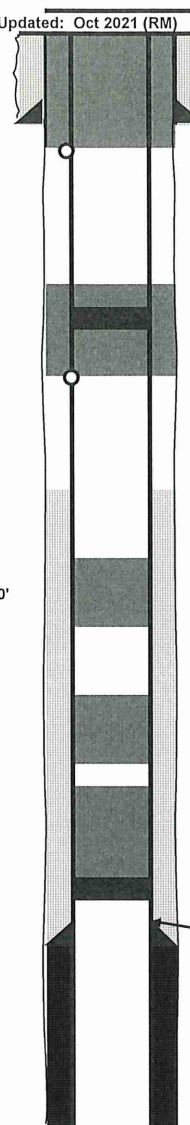
Plug #4 Nacimiento – 579'-735' RU TWG wireline, RIH and shot 3 holes at 735' (Nacimiento top=685'). Set CICR at 682'KB. Stung out, est circulation w/ 8bbls, pressure test csg to 600psi, held 30minutes, good test. Stung into retainer, est inj rate at 2.5bpm at 400psi. Pump Nacimiento plug: M&P 48sx of CI "G" cement (55.2cuft, 9.9bbls, 1.15yld, 15.8ppg), displaced w/ 1bbl, stung out and balanced 12sx on top of retainer w/1bbl water.

Plug #5 – Surface – 148' - RIH & shoot 3 holes at 148'KB. Established circulation w/ ~25bbls of water. ND BOP & NU B-1 Adapter. Surf plug: M&P 97sx CI "G" cement, returned slurry to surface, closed BH valve and squeezed approx 2bbls into perforations. Shut in well (1330hrs). Welder arrived 1530hrs. Cut-off wellhead, Mix & top off cement, monitor, falling back, topped off 3x, fall back slowing. Loaded cellar around cut-off with 6bbls of cement slurry. Total surf plug=107sx (123cuft, 22bbl, 1.15yld, 15.8ppg). BLM Inspector, Jimmie Dobson, on location to witness/approve all plugs to date. Surface plug inspected and signed off by BLM prior to burial.

Updated: Oct 2021 (RM)



Perfs at 148'KB



TD: 2938' KB

Production Tubing Detail			
	Length	Top	Bottom
KB Adjustment	10.00	0	10.00
		10.00	10.00
		10.00	10.00
		10.00	10.00
		10.00	10.00
		10.00	10.00

[illegible]

Pumping Unit:	_____	Gear Sheave:	_____
API Designation:	_____	Stroke Length:	_____
Samson Post SN:	_____	Gear Ratio:	_____
Gear Box SN:	_____	SPM:	_____
Structural Unbalance:	_____	Horse Power:	_____
Power:	_____	Volts:	_____
Power SN:	_____	Amps:	_____
Sheave Size:	_____	Belts:	_____

District I
1625 N. French Dr., Hobbs, NM 88240
Phone:(575) 393-6161 Fax:(575) 393-0720
District II
811 S. First St., Artesia, NM 88210
Phone:(575) 748-1283 Fax:(575) 748-9720
District III
1000 Rio Brazos Rd., Aztec, NM 87410
Phone:(505) 334-6178 Fax:(505) 334-6170
District IV
1220 S. St Francis Dr., Santa Fe, NM 87505
Phone:(505) 476-3470 Fax:(505) 476-3462

State of New Mexico
Energy, Minerals and Natural Resources
Oil Conservation Division
1220 S. St Francis Dr.
Santa Fe, NM 87505

CONDITIONS

Action 63467

CONDITIONS

Operator: EPIC ENERGY, L.L.C. 332 Road 3100 Aztec, NM 87410	OGRID: 372834
	Action Number: 63467
	Action Type: [C-103] Sub. Plugging (C-103P)

CONDITIONS

Created By	Condition	Condition Date
mkuehling	None	11/24/2021