

Well Name: CLINCHER FED COM	Well Location: T25S / R35E / SEC 1 / LOT 4 /	County or Parish/State:
Well Number: 701H	Type of Well: OIL WELL	Allottee or Tribe Name:
Lease Number: NMNM138897	Unit or CA Name:	Unit or CA Number:
US Well Number: 3002548809	Well Status: Approved Application for Permit to Drill	Operator: FRANKLIN MOUNTAIN ENERGY LLC

Subsequent Report

Sundry ID: 2509335

Type of Submission: Subsequent Report

Date Sundry Submitted: 11/29/2021

Date Operation Actually Began: 07/01/2021

Type of Action: Other

Time Sundry Submitted: 10:12

**Actual Procedure:** Franklin Mountain Energy, LLC (FME), Operator of the above captioned well, respectfully submits the attached, updated, C-102 for BLM record.

SR Attachments

**Actual Procedure**

C\_102\_CLINCHER\_FED\_COM\_701H\_20211129101231.pdf

<b>Well Name:</b> CLINCHER FED COM	<b>Well Location:</b> T25S / R35E / SEC 1 / LOT 4 /	<b>County or Parish/State:</b>
<b>Well Number:</b> 701H	<b>Type of Well:</b> OIL WELL	<b>Allottee or Tribe Name:</b>
<b>Lease Number:</b> NMNM138897	<b>Unit or CA Name:</b>	<b>Unit or CA Number:</b>
<b>US Well Number:</b> 3002548809	<b>Well Status:</b> Approved Application for Permit to Drill	<b>Operator:</b> FRANKLIN MOUNTAIN ENERGY LLC

Operator Certification

I certify that the foregoing is true and correct. Title 18 U.S.C. Section 1001 and Title 43 U.S.C. Section 1212, make it a crime for any person knowingly and willfully to make to any department or agency of the United States any false, fictitious or fraudulent statements or representations as to any matter within its jurisdiction. Electronic submission of Sundry Notices through this system satisfies regulations requiring a submission of Form 3160-5 or a Sundry Notice.

<b>Operator Electronic Signature:</b> RACHAEL OVERBEY	<b>Signed on:</b> NOV 29, 2021 10:12 AM
<b>Name:</b> FRANKLIN MOUNTAIN ENERGY LLC	
<b>Title:</b> Director – Operations Planning and Regulatory	
<b>Street Address:</b> 2401 E 2nd Avenue, Suite 300	
<b>City:</b> Denver	<b>State:</b> CO
<b>Phone:</b> (720) 414-7868	
<b>Email address:</b> roverbey@fmellc.com	

Field Representative

<b>Representative Name:</b>		
<b>Street Address:</b>		
<b>City:</b>	<b>State:</b>	<b>Zip:</b>
<b>Phone:</b>		
<b>Email address:</b>		

BLM Point of Contact

<b>BLM POC Name:</b> CHRISTOPHER WALLS	<b>BLM POC Title:</b> Petroleum Engineer
<b>BLM POC Phone:</b> 5752342234	<b>BLM POC Email Address:</b> cwalls@blm.gov
<b>Disposition:</b> Approved	<b>Disposition Date:</b> 12/03/2021
<b>Signature:</b> Chris Walls	

District I  
1625 N. French Dr., Hobbs, NM 88240  
Phone: (575) 393-6161 Fax: (575) 393-0720  
District II  
811 S. First St., Artesia, NM 88210  
Phone: (575) 748-1283 Fax: (575) 748-9720  
District III  
1000 Rio Brazos Road, Aztec, NM 87410  
Phone: (505) 334-6178 Fax: (505) 334-6170  
District IV  
1220 S. St. Francis Dr., Santa Fe, NM 87505  
Phone: (505) 476-3460 Fax: (505) 476-3462

State of New Mexico  
Energy, Minerals & Natural Resources Department  
OIL CONSERVATION DIVISION  
1220 South St. Francis Dr.  
Santa Fe, NM 87505

Form C-102  
Revised August 1, 2011  
Submit one copy to appropriate  
District Office

☒ AMENDED REPORT

WELL LOCATION AND ACREAGE DEDICATION PLAT

<sup>1</sup> API Number 30-025-48809		<sup>2</sup> Pool Code 98187		<sup>3</sup> Pool Name WC-025 G-09 S253502D; UPR WOLFCAMP	
<sup>4</sup> Property Code 330789		<sup>5</sup> Property Name CLINCHER FED COM			<sup>6</sup> Well Number 701H
<sup>7</sup> OGRID No. 373910		<sup>8</sup> Operator Name FRANKLIN MOUNTAIN ENERGY LLC			<sup>9</sup> Elevation 3273.4'

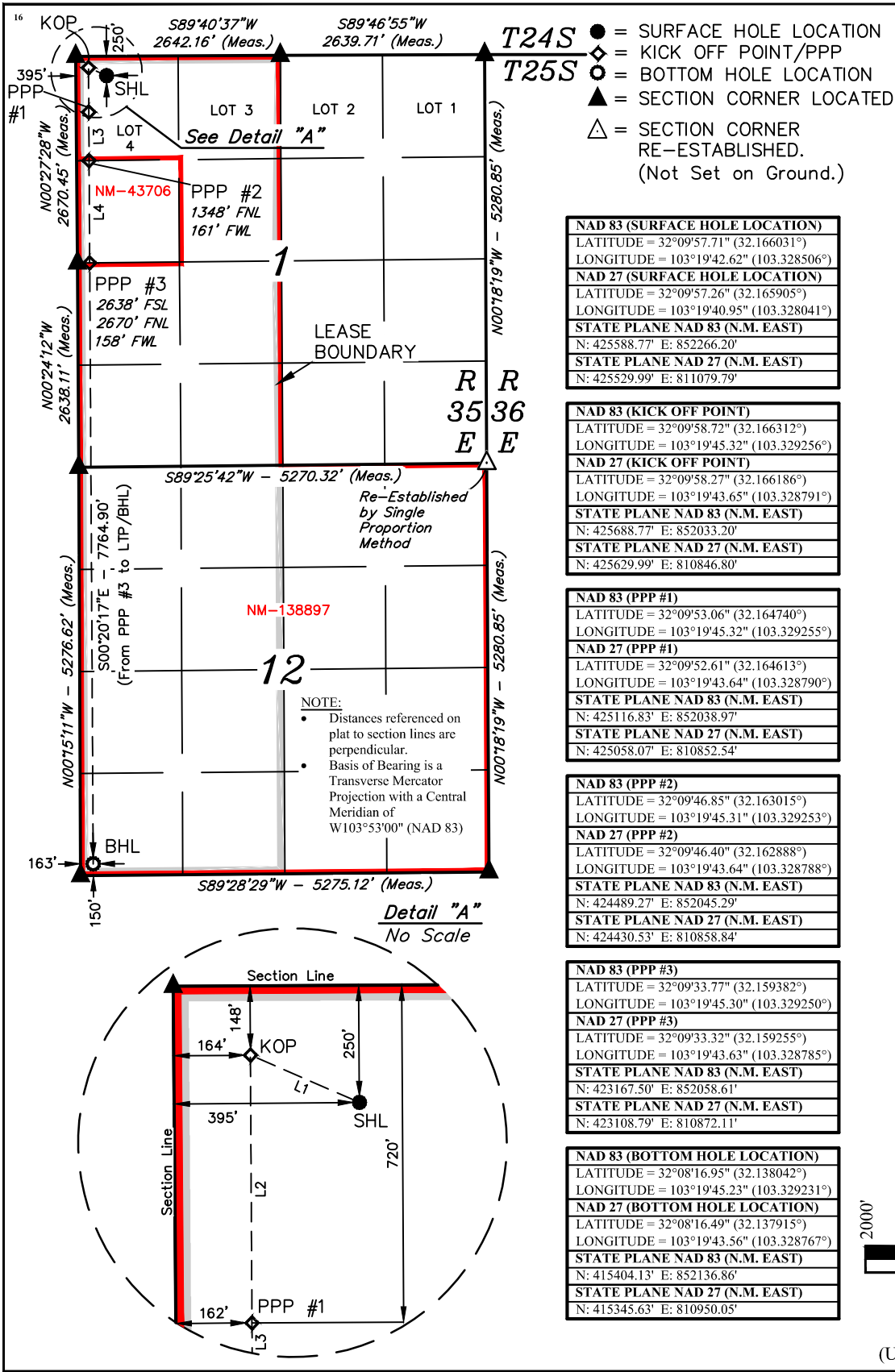
<sup>10</sup> Surface Location

UL or lot no.	Section	Township	Range	Lot Idn	Feet from the	North/South line	Feet from the	East/West line	County
4	1	25S	35E		250	NORTH	395	WEST	LEA

<sup>11</sup> Bottom Hole Location If Different From Surface

UL or lot no.	Section	Township	Range	Lot Idn	Feet from the	North/South line	Feet from the	East/West line	County
M	12	25S	35E		150	SOUTH	163	WEST	LEA
<sup>12</sup> Dedicated Acres 641.51		<sup>13</sup> Joint or Infill		<sup>14</sup> Consolidation Code		<sup>15</sup> Order No.			

No allowable will be assigned to this completion until all interests have been consolidated or a non-standard unit has been approved by the division.



- T24S** ● = SURFACE HOLE LOCATION  
**T25S** ◆ = KICK OFF POINT/PPP  
○ = BOTTOM HOLE LOCATION  
▲ = SECTION CORNER LOCATED  
△ = SECTION CORNER RE-ESTABLISHED.  
(Not Set on Ground.)

<b>NAD 83 (SURFACE HOLE LOCATION)</b>	
LATITUDE = 32°09'57.71" (32.166031°)	
LONGITUDE = 103°19'42.62" (103.328506°)	
<b>NAD 27 (SURFACE HOLE LOCATION)</b>	
LATITUDE = 32°09'57.26" (32.165905°)	
LONGITUDE = 103°19'40.95" (103.328041°)	
<b>STATE PLANE NAD 83 (N.M. EAST)</b>	
N: 425588.77' E: 852266.20'	
<b>STATE PLANE NAD 27 (N.M. EAST)</b>	
N: 425529.99' E: 811079.79'	

<b>NAD 83 (KICK OFF POINT)</b>	
LATITUDE = 32°09'58.72" (32.166312°)	
LONGITUDE = 103°19'45.32" (103.329256°)	
<b>NAD 27 (KICK OFF POINT)</b>	
LATITUDE = 32°09'58.27" (32.166186°)	
LONGITUDE = 103°19'43.65" (103.328791°)	
<b>STATE PLANE NAD 83 (N.M. EAST)</b>	
N: 425688.77' E: 852033.20'	
<b>STATE PLANE NAD 27 (N.M. EAST)</b>	
N: 425629.99' E: 810846.80'	

<b>NAD 83 (PPP #1)</b>	
LATITUDE = 32°09'53.06" (32.164740°)	
LONGITUDE = 103°19'45.32" (103.329255°)	
<b>NAD 27 (PPP #1)</b>	
LATITUDE = 32°09'52.61" (32.164613°)	
LONGITUDE = 103°19'43.64" (103.328790°)	
<b>STATE PLANE NAD 83 (N.M. EAST)</b>	
N: 425116.83' E: 852038.97'	
<b>STATE PLANE NAD 27 (N.M. EAST)</b>	
N: 425058.07' E: 810852.54'	

<b>NAD 83 (PPP #2)</b>	
LATITUDE = 32°09'46.85" (32.163015°)	
LONGITUDE = 103°19'45.31" (103.329253°)	
<b>NAD 27 (PPP #2)</b>	
LATITUDE = 32°09'46.40" (32.162888°)	
LONGITUDE = 103°19'43.64" (103.328788°)	
<b>STATE PLANE NAD 83 (N.M. EAST)</b>	
N: 424489.27' E: 852045.29'	
<b>STATE PLANE NAD 27 (N.M. EAST)</b>	
N: 424430.53' E: 810858.84'	

<b>NAD 83 (PPP #3)</b>	
LATITUDE = 32°09'33.77" (32.159382°)	
LONGITUDE = 103°19'45.30" (103.329250°)	
<b>NAD 27 (PPP #3)</b>	
LATITUDE = 32°09'33.32" (32.159255°)	
LONGITUDE = 103°19'43.63" (103.328785°)	
<b>STATE PLANE NAD 83 (N.M. EAST)</b>	
N: 423167.50' E: 852058.61'	
<b>STATE PLANE NAD 27 (N.M. EAST)</b>	
N: 423108.79' E: 810872.11'	

<b>NAD 83 (BOTTOM HOLE LOCATION)</b>	
LATITUDE = 32°08'16.95" (32.138042°)	
LONGITUDE = 103°19'45.23" (103.329231°)	
<b>NAD 27 (BOTTOM HOLE LOCATION)</b>	
LATITUDE = 32°08'16.49" (32.137915°)	
LONGITUDE = 103°19'43.56" (103.328767°)	
<b>STATE PLANE NAD 83 (N.M. EAST)</b>	
N: 415404.13' E: 852136.86'	
<b>STATE PLANE NAD 27 (N.M. EAST)</b>	
N: 415345.63' E: 810950.05'	

**<sup>17</sup> OPERATOR CERTIFICATION**  
I hereby certify that the information contained herein is true and complete to the best of my knowledge and belief, and that this organization either owns a working interest or unleased mineral interest in the land including the proposed bottom hole location or has a right to drill this well at this location pursuant to a contract with an owner of such a mineral or working interest, or to a voluntary pooling agreement or a compulsory pooling order heretofore entered by the division.

Signature: *Shelly Albrecht* Date: 7/22/2021

Printed Name: Shelly Albrecht  
E-mail Address: salbrecht@fmellc.com

**<sup>18</sup> SURVEYOR CERTIFICATION**  
I hereby certify that the well location shown on this plat was plotted from field notes of actual surveys made by me or under my supervision, and that the same is true and correct to the best of my belief.

February 13, 2020  
Date of Survey  
Signature and Seal of Professional Surveyor:



Certificate Number:

LINE TABLE		
LINE	DIRECTION	LENGTH
L1	N66°31'57"W	253.59'
L2	S00°20'16"E	572.05'
L3	S00°20'17"E	627.68'
L4	S00°20'17"E	1322.03'



S C A L E  
DRAWN BY: S.F. 02-24-20  
REV: 2 A.T. 07-21-21  
(UPDATE DEDICATED ACREAGE)

**District I**  
1625 N. French Dr., Hobbs, NM 88240  
Phone:(575) 393-6161 Fax:(575) 393-0720  
**District II**  
811 S. First St., Artesia, NM 88210  
Phone:(575) 748-1283 Fax:(575) 748-9720  
**District III**  
1000 Rio Brazos Rd., Aztec, NM 87410  
Phone:(505) 334-6178 Fax:(505) 334-6170  
**District IV**  
1220 S. St Francis Dr., Santa Fe, NM 87505  
Phone:(505) 476-3470 Fax:(505) 476-3462

**State of New Mexico**  
**Energy, Minerals and Natural Resources**  
**Oil Conservation Division**  
**1220 S. St Francis Dr.**  
**Santa Fe, NM 87505**

CONDITIONS  
  
Action 64931

CONDITIONS

Operator:  Franklin Mountain Energy LLC 44 Cook Street Denver, CO 80206	OGRID:  373910
	Action Number:  64931
	Action Type:  [C-103] NOI Change of Plans (C-103A)

CONDITIONS

Created By	Condition	Condition Date
pkautz	REQUIRES NSL	12/6/2021