

Submit Copy To Appropriate District  
Office  
District I – (575) 393-6161  
1625 N. French Dr., Hobbs, NM 88240  
District II – (575) 748-1283  
811 S. First St., Artesia, NM 88210  
District III – (505) 334-6178  
1000 Rio Brazos Rd., Aztec, NM 87410  
District IV – (505) 476-3460  
1220 S. St. Francis Dr., Santa Fe, NM  
87505

State of New Mexico  
Energy, Minerals and Natural Resources

Form C-103  
Revised July 18, 2013

OIL CONSERVATION DIVISION  
1220 South St. Francis Dr.  
Santa Fe, NM 87505

WELL API NO. 30-025-45682
5. Indicate Type of Lease Federal STATE <input type="checkbox"/> FEE <input type="checkbox"/>
6. State Oil & Gas Lease No.
7. Lease Name or Unit Agreement Name Donkey Kong 1 Fed Com
8. Well Number 602H
9. OGRID Number 372165
10. Pool name or Wildcat OJO CHISO, BONE SPRING SOUTH

SUNDRY NOTICES AND REPORTS ON WELLS (DO NOT USE THIS FORM FOR PROPOSALS TO DRILL OR TO DEEPEN OR PLUG BACK TO A DIFFERENT RESERVOIR. USE "APPLICATION FOR PERMIT" (FORM C-101) FOR SUCH PROPOSALS.)	
1. Type of Well: Oil Well <input checked="" type="checkbox"/> Gas Well <input type="checkbox"/> Other	
2. Name of Operator Centennial Resource Production, LLC	
3. Address of Operator 1001 17th Street, suite 1800, Denver, CO 80202	
4. Well Location Unit Letter J : 1938 feet from the SOUTH line and 1384 feet from the EAST line Section 1 Township 23S Range 34E NMPM County LEA	
11. Elevation (Show whether DR, RKB, RT, GR, etc.) 3365 GL	

12. Check Appropriate Box to Indicate Nature of Notice, Report or Other Data

NOTICE OF INTENTION TO:		SUBSEQUENT REPORT OF:	
PERFORM REMEDIAL WORK <input type="checkbox"/>	PLUG AND ABANDON <input type="checkbox"/>	REMEDIAL WORK <input type="checkbox"/>	ALTERING CASING <input type="checkbox"/>
TEMPORARILY ABANDON <input type="checkbox"/>	CHANGE PLANS <input type="checkbox"/>	COMMENCE DRILLING OPNS. <input type="checkbox"/>	P AND A <input type="checkbox"/>
PULL OR ALTER CASING <input type="checkbox"/>	MULTIPLE COMPL <input type="checkbox"/>	CASING/CEMENT JOB <input type="checkbox"/>	
DOWNHOLE COMMINGLE <input type="checkbox"/>			
CLOSED-LOOP SYSTEM <input type="checkbox"/>			
OTHER: Designated acreage change <input checked="" type="checkbox"/>		OTHER: <input type="checkbox"/>	

13. Describe proposed or completed operations. (Clearly state all pertinent details, and give pertinent dates, including estimated date of starting any proposed work). SEE RULE 19.15.7.14 NMAC. For Multiple Completions: Attach wellbore diagram of proposed completion or recompletion.

Centennial Resource Production, LLC requests to update the designated acreage for the Donkey Kong 1 Fed Com 602H to 480.11 acres. Please see updated C-102 well plat attached.

Spud Date:

Rig Release Date:

I hereby certify that the information above is true and complete to the best of my knowledge and belief.

SIGNATURE \_\_\_\_\_ TITLE Sr. Regulatory Analyst DATE 1/24/2022

Type or print name Ariana Solis E-mail address: ariana.solis@cdevinc.com PHONE: 512-574-3190  
**For State Use Only**

APPROVED BY: \_\_\_\_\_ TITLE \_\_\_\_\_ DATE \_\_\_\_\_

Conditions of Approval (if any):

**District I**  
1625 N. French Dr., Hobbs, NM 88240  
Phone: (575) 393-6161 Fax: (575) 393-0720

**District II**  
811 S. First St., Artesia, NM 88210  
Phone: (575) 748-1283 Fax: (575) 748-9720

**District III**  
1000 Rio Brazos Road, Aztec, NM 87410  
Phone: (505) 334-6178 Fax: (505) 334-6170

**District IV**  
1220 S. St. Francis Dr., Santa Fe, NM 87505  
Phone: (505) 476-3460 Fax: (505) 476-3462

State of New Mexico  
Energy, Minerals & Natural Resources Department  
OIL CONSERVATION DIVISION  
1220 South St. Francis Dr.  
Santa Fe, NM 87505

Form C-102  
Revised August 1, 2011  
Submit one copy to appropriate  
District Office

☐ AMENDED REPORT

# WELL LOCATION AND ACREAGE DEDICATION PLAT

<sup>1</sup> API Number 30-025-45682	<sup>2</sup> Pool Code 97293	<sup>3</sup> Pool Name OJO CHISO; BONE SPRING SOUTH
<sup>4</sup> Property Code 325119	<sup>5</sup> Property Name DONKEY KONG I FED COM	<sup>6</sup> Well Number #602H
<sup>7</sup> OGRID No. 372165	<sup>8</sup> Operator Name CENTENNIAL RESOURCE PRODUCTION, LLC	<sup>9</sup> Elevation 3365.6'

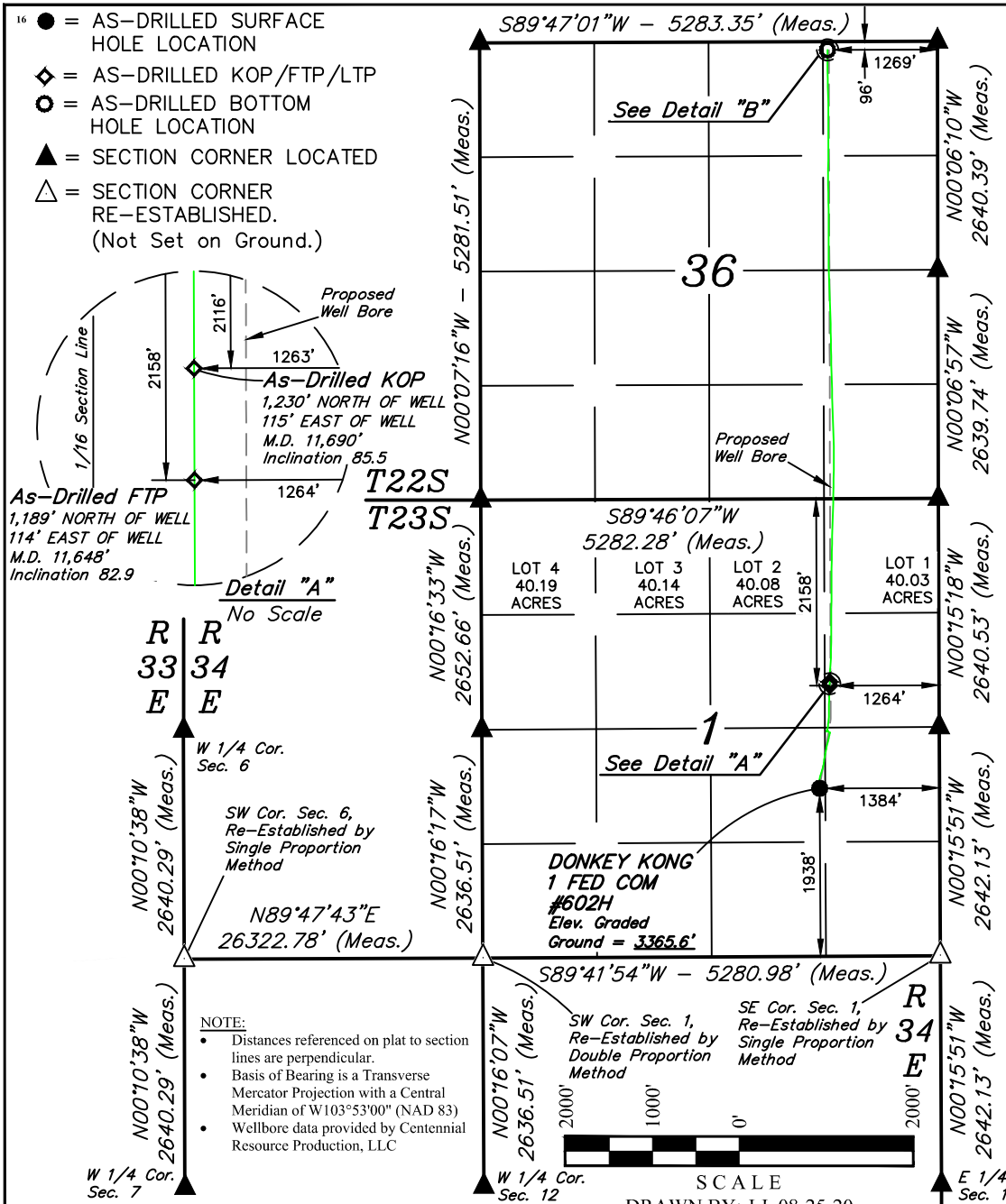
## <sup>10</sup> Surface Location

UL or lot no.	Section	Township	Range	Lot Idn	Feet from the	North/South line	Feet from the	East/West line	County
J	1	23S	34E		1938	SOUTH	1384	EAST	LEA

<sup>11</sup> Bottom Hole Location If Different From Surface

UL or lot no. A	Section 36	Township 22S	Range 34E	Lot Idn	Feet from the 96	North/South line NORTH	Feet from the 1269	East/West line EAST	County LEA
<sup>12</sup> Dedicated Acres 480.11		<sup>13</sup> Joint or Infill		<sup>14</sup> Consolidation Code		<sup>15</sup> Order No.			

No allowable will be assigned to this completion until all interests have been consolidated or a non-standard unit has been approved by the division.



<b>NAD 83 (AS-DRILLED SHL)</b>	<b>NAD 83 (AS-DRILLED KOP)</b>
<b>LATITUDE = 32°19'54.15" (32.331709°)</b>	<b>LATITUDE = 32°20'06.32" (32.335089°)</b>
<b>LONGITUDE = 103°25'10.91" (103.419698°)</b>	<b>LONGITUDE = 103°25'09.51" (103.419308°)</b>
<b>STATE PLANE NAD 83 (N.M. EAST)</b>	<b>STATE PLANE NAD 83 (N.M. EAST)</b>
<b>Y: 485611.14' X: 823534.41'</b>	<b>Y: 486841.89' X: 823644.34'</b>
<b>UTM, NAD 83 (ZONE 13)</b>	<b>UTM, NAD 83 (ZONE 13)</b>
<b>Y: 11739810.05' X: 2128395.46'</b>	<b>Y: 11741041.30' X: 2128497.72'</b>

<b>NAD 83 (AS-DRILLED FTP)</b>	<b>NAD 83 (AS-DRILLED LTP)</b>
<b>LATITUDE = 32°20'05.91" (32.334974°)</b>	<b>LATITUDE = 32°21'18.17" (32.355048°)</b>
<b>LONGITUDE = 103°25'09.52" (103.419311°)</b>	<b>LONGITUDE = 103°25'09.43" (103.419287°)</b>
<b>STATE PLANE NAD 83 (N.M. EAST)</b>	<b>STATE PLANE NAD 83 (N.M. EAST)</b>
<b>Y: 486800.15' X: 823643.81'</b>	<b>Y: 494103.23' X: 823588.94'</b>
<b>UTM, NAD 83 (ZONE 13)</b>	<b>UTM, NAD 83 (ZONE 13)</b>
<b>Y: 11740999.56' X: 2128497.44'</b>	<b>Y: 11748301.22' X: 2128397.11'</b>

APPROXIMATE WELL BORE DISTANCE FROM FTP TO LTP	
SECTION 1	2,159.05'
SECTION 36	5,147.32'
TOTAL	7,306.37'
<b>NAD 83 (AS-DRILLED BHL)</b>	
LATITUDE = 32°21'18.55" (32.355152°)	
LONGITUDE = 103°25'09.43" (103.419286°)	
<b>STATE PLANE NAD 83 (N.M. EAST)</b>	
Y: 494141.22' X: 823588.64'	
<b>UTM, NAD 83 (ZONE 13)</b>	
Y: 11748339.21' X: 2128396.58'	

## 17 OPERATOR CERTIFICATION

*I hereby certify that the information contained herein is true and complete to the best of my knowledge and belief, and that this organization either owns a working interest or unleased mineral interest in the land including the proposed bottom hole location or has a right to drill this well at this location pursuant to a contract with an owner of such a mineral or working interest, or to a voluntary pooling agreement or a compulsory pooling order heretofore entered by the division.*

---

Signature \_\_\_\_\_
Date \_\_\_\_\_

Ariana Solis

Printed Name \_\_\_\_\_

ariana.solis@cdevinc.com

E-mail Address

## 18 SURVEYOR CERTIFICATION

*I hereby certify that the well location shown on this plat was plotted from field notes of actual surveys made by me or under my supervision, and that the same is true and correct to the best of my belief.*

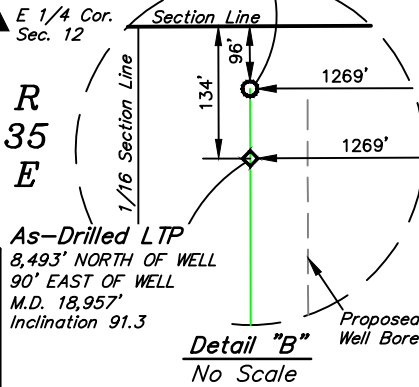
January 15, 2020

Date of Survey \_\_\_\_\_  
Signature and Seal of Professional Surveyor: \_\_\_\_\_



Certificate Number:

**As-Drilled BHL**  
8,531' NORTH OF WELL  
90' EAST OF WELL  
M.D. 18,995  
Inclination 91.3



**District I**  
1625 N. French Dr., Hobbs, NM 88240  
Phone:(575) 393-6161 Fax:(575) 393-0720  
**District II**  
811 S. First St., Artesia, NM 88210  
Phone:(575) 748-1283 Fax:(575) 748-9720  
**District III**  
1000 Rio Brazos Rd., Aztec, NM 87410  
Phone:(505) 334-6178 Fax:(505) 334-6170  
**District IV**  
1220 S. St Francis Dr., Santa Fe, NM 87505  
Phone:(505) 476-3470 Fax:(505) 476-3462

**State of New Mexico**  
**Energy, Minerals and Natural Resources**  
**Oil Conservation Division**  
**1220 S. St Francis Dr.**  
**Santa Fe, NM 87505**

CONDITIONS  
  
Action 75178

CONDITIONS

Operator: CENTENNIAL RESOURCE PRODUCTION, LLC 1001 17th Street, Suite 1800 Denver, CO 80202	OGRID: 372165
	Action Number: 75178
	Action Type: [C-103] NOI Change of Plans (C-103A)

CONDITIONS

Created By	Condition	Condition Date
pkautz	None	1/26/2022