

Submit 1 Copy To Appropriate District Office
 District I – (575) 393-6161
 1625 N. French Dr., Hobbs, NM 88240
 District II – (575) 748-1283
 811 S. First St., Artesia, NM 88210
 District III – (505) 334-6178
 1000 Rio Brazos Rd., Aztec, NM 87410
 District IV – (505) 476-3460
 1220 S. St. Francis Dr., Santa Fe, NM 87505

State of New Mexico
 Energy, Minerals and Natural Resources

Form C-103
 Revised July 18, 2013

OIL CONSERVATION DIVISION
 1220 South St. Francis Dr.
 Santa Fe, NM 87505

| | | |
|---|--|---|
| SUNDRY NOTICES AND REPORTS ON WELLS (DO NOT USE THIS FORM FOR PROPOSALS TO DRILL OR TO DEEPEN OR PLUG BACK TO A DIFFERENT RESERVOIR. USE "APPLICATION FOR PERMIT" (FORM C-101) FOR SUCH PROPOSALS.) | | WELL API NO. 30-045-26102 |
| 1. Type of Well: Oil Well <input type="checkbox"/> Gas Well <input checked="" type="checkbox"/> Other <input type="checkbox"/> | | 5. Indicate Type of Lease STATE <input checked="" type="checkbox"/> FEE <input type="checkbox"/> |
| 2. Name of Operator Bolack Minerals Co | | 6. State Oil & Gas Lease No. |
| 3. Address of Operator 3901 Bloomfield Hwy Farmington, NM 87401 | | 7. Lease Name or Unit Agreement Name Gallegos Canyon Unit |
| 4. Well Location Unit Letter <u>P</u> <u>1055</u> feet from the <u>S</u> line and <u>805</u> feet from the <u>E</u> line Section <u>24</u> Township <u>29N</u> Range <u>13W</u> NMPM County <u>San Juan</u> | | 8. Well Number <u>348</u> |
| 11. Elevation (Show whether DR, RKB, RT, GR, etc.) 5297 | | 9. OGRID Number 2647 |
| | | 10. Pool name or Wildcat Farmington Sands |

12. Check Appropriate Box to Indicate Nature of Notice, Report or Other Data

NOTICE OF INTENTION TO:

PERFORM REMEDIAL WORK ☐ PLUG AND ABANDON ☒
 TEMPORARILY ABANDON ☐ CHANGE PLANS ☐
 PULL OR ALTER CASING ☐ MULTIPLE COMPL ☐
 DOWNHOLE COMMINGLE ☐
 CLOSED-LOOP SYSTEM ☐
 OTHER: ☐

SUBSEQUENT REPORT OF:

REMEDIAL WORK ☐ ALTERING CASING ☐
 COMMENCE DRILLING OPNS. ☐ P AND A ☐
 CASING/CEMENT JOB ☐
 OTHER: ☐

13. Describe proposed or completed operations. (Clearly state all pertinent details, and give pertinent dates, including estimated date of starting any proposed work). SEE RULE 19.15.7.14 NMAC. For Multiple Completions: Attach wellbore diagram of proposed completion or recompletion.

Bolack Minerals Co. plans to plug this well in accordance with the attached procedure and any agreed modifications thereto.

ESTIMATED START DATE 4/1/22

Spud Date:

Rig Release Date:

I hereby certify that the information above is true and complete to the best of my knowledge and belief.

SIGNATURE Drake McCulloch TITLE Authorized Representative DATE 3/10/22

Type or print name Drake McCulloch E-mail address: drake@dwsrigs.com PHONE: 505 320 1180

For State Use Only

APPROVED BY: _____ TITLE _____ DATE _____

Conditions of Approval (if any):

Bolack Minerals Co.

Plug And Abandonment Procedure

GCU #348

1055' FSL & 805' FEL, Section 24, T29N, R13W

San Juan County, NM / API 30-045-26102

1. Hold pre-job safety meeting. Comply with all NMOCD, BLM safety and environmental regulations.
2. Check casing, tubing, and Bradenhead pressures.
3. Remove existing piping on casing valve. RU blow lines from casing valves and begin blowing down casing pressure. Kill well as necessary. Ensure well is dead or on a vacuum.
4. R/U P&A rig and equipment.
5. TOOH and L/D 530' of 2-3/8" production tubing.
6. Cut-off existing wellhead.
5. RIH with 2" poly pipe to plug back TD at 592'.
6. Rig up to pump cement down poly pipe. Pump water to establish rate down poly pipe.

NOTE: All Plugs Include 100% Excess outside casing and 50% Excess inside casing

7. **Plug 1 (Farmington Sands Perforations and Formation Top, Kirtland Formation Top, Surface Casing Shoe 592'-Surface, 40 Sacks Type III Cement)**

Establish circulation down 2" poly pipe and back to surface with fresh water. Mix approximately 40 sx Type III cement and circulate a plug from 592' to surface to cover the Farmington Sands perforations and formation top, Kirtland formation top and surface casing shoe. Circulate good cement out at surface.

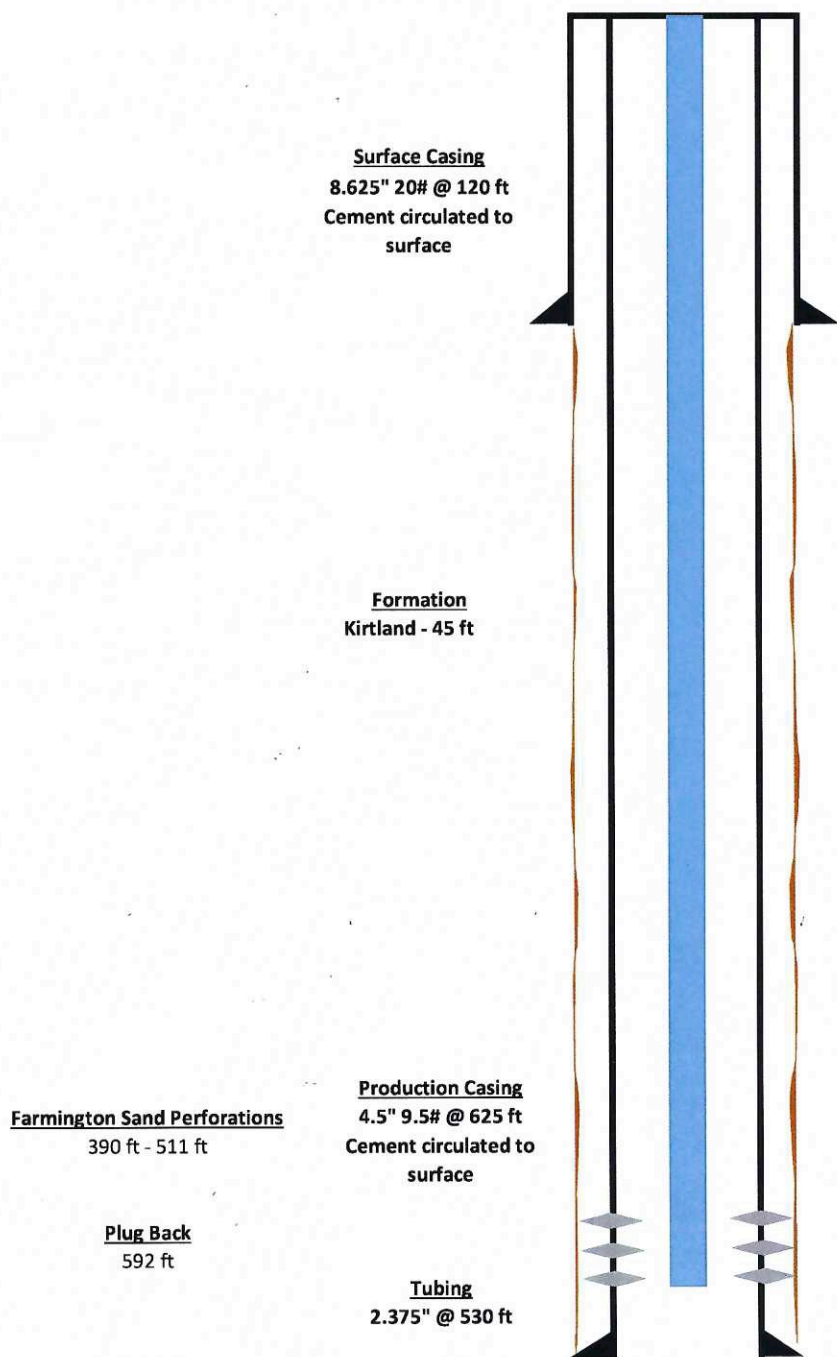
8. Fill annuli with cement as necessary. Install P&A marker to comply with regulations. Record GPS coordinates for P&A marker on EOW report. Photograph P&A marker in place. RD, MOL and restore location per BLM/NMOCD stipulations.

Wellbore Diagram

GCU #348

API #: 30-045-26102

San Juan County, New Mexico



Wellbore Diagram

GCU #348

API #: 30-045-26102

San Juan County, New Mexico

Plug 1

592 feet - Surface

592 feet plug

40 sacks of Type III Cement

Cement circulated to surface

Surface Casing

8.625" 20# @ 120 ft

Formation
Kirtland - 45 ft

Farmington Sand Perforations

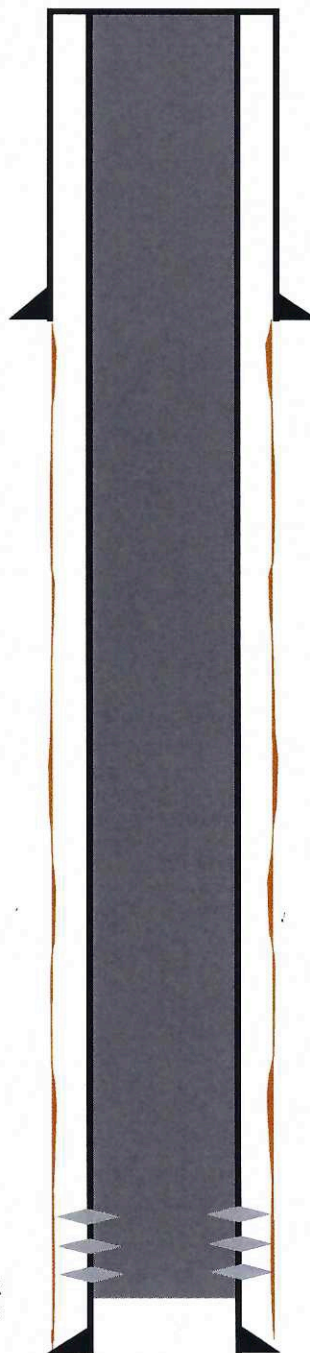
390 ft - 511 ft

Plug Back

592 ft

Production Casing

4.5" 9.5# @ 625 ft



District I
1625 N. French Dr., Hobbs, NM 88240
Phone:(575) 393-6161 Fax:(575) 393-0720
District II
811 S. First St., Artesia, NM 88210
Phone:(575) 748-1283 Fax:(575) 748-9720
District III
1000 Rio Brazos Rd., Aztec, NM 87410
Phone:(505) 334-6178 Fax:(505) 334-6170
District IV
1220 S. St Francis Dr., Santa Fe, NM 87505
Phone:(505) 476-3470 Fax:(505) 476-3462

State of New Mexico
Energy, Minerals and Natural Resources
Oil Conservation Division
1220 S. St Francis Dr.
Santa Fe, NM 87505

CONDITIONS

Action 91608

CONDITIONS

| | |
|--|---|
| Operator: BOLACK MINERALS CO 3901 Bloomfield Hwy Farmington, NM 87401 | OGRID: 2647 |
| | Action Number: 91608 |
| | Action Type: [C-103] NOI Plug & Abandon (C-103F) |

CONDITIONS

| | | |
|------------|---|----------------|
| Created By | Condition | Condition Date |
| kpickford | Notify NMOCD 24 Hours Prior to beginning operations | 3/24/2022 |