

State of New Mexico  
Energy, Minerals and Natural Resources

Office  
District I - (575) 393-6161  
1625 N. French Dr., Hobbs, NM 88240  
District II - (575) 748-1283  
811 S. First St., Artesia, NM 88210  
District III - (505) 334-6178  
1000 Rio Brazos Rd., Aztec, NM 87410  
District IV - (505) 476-3460  
1220 S. St. Francis Dr., Santa Fe, NM  
87505

OIL CONSERVATION DIVISION  
1220 South St. Francis Dr.  
Santa Fe, NM 87505WELL API NO.  
30-007-20892

5. Indicate Type of Lease

STATE ☐ FEE ☒

6. State Oil &amp; Gas Lease No.

7. Lease Name or Unit Agreement Name  
VPR A

8. Well Number 500

9. OGRID Number  
328741

10. Pool name or Wildcat

## SUNDRY NOTICES AND REPORTS ON WELLS

(DO NOT USE THIS FORM FOR PROPOSALS TO DRILL OR TO DEEPEN OR PLUG BACK TO A DIFFERENT RESERVOIR. USE "APPLICATION FOR PERMIT" (FORM C-101) FOR SUCH PROPOSALS.)

1. Type of Well: Oil Well ☐ Gas Well ☒ Other2. Name of Operator  
Wapiti Operating, LLC3. Address of Operator  
P.O. Box 190, 309 Silver St., Raton, NM 87740

## 4. Well Location

Unit Letter: O : 332 feet from the South line and 2549 feet from the East line

Section : 30 Township: 31N Range : 21E NMPM County: Colfax

11. Elevation (Show whether DR, RKB, RT, GR, etc.)  
7966 (GL)

## 12. Check Appropriate Box to Indicate Nature of Notice, Report or Other Data

## NOTICE OF INTENTION TO:

O  
TEMPORARILY ABANDON ☐ PLUG AND ABANDON ☒  
PULL OR ALTER CASING ☐ CHANGE PLANS ☐  
DOWNHOLE COMMINGLE ☐ MULTIPLE COMPL ☐  
CLOSED-LOOP SYSTEM ☐  
OTHER: ☐

## SUBSEQUENT REPORT OF:

REMEDIAL WORK ☐ ALTERING CASING ☐  
COMMENCE DRILLING OPNS. ☐ P AND A ☒  
CASING/CEMENT JOB ☐  
OTHER: ☐

13. Describe proposed or completed operations. (Clearly state all pertinent details, and give pertinent dates, including estimated date of starting any proposed work). SEE RULE 19.15.7.14 NMAC. For Multiple Completions: Attach wellbore diagram of proposed completion or recompletion.

This is an amendment to the plugging and abandonment procedure previously submitted for the above mentioned injection well.

Spud Date:

Rig Release Date:

I hereby certify that the information above is true and complete to the best of my knowledge and belief.

SIGNATURE

TITLE: HSE &amp; Regulatory Specialist, Sr. DATE 3-24-22

Type or print name Randy L. Madison E-mail address: rmadison@wapitienergy.com PHONE: 1-575-445-6706

For State Use Only

APPROVED BY:

TITLE

DATE

Conditions of Approval (if any):

# Wapiti Operating, LLC

## VPR A-500 Plugging

### API # 30-007-20892

Pre job Preparation: Check well for flow.

#### **Injection Perforations and liner top:**

MIRU

Nipple down wellhead, Nipple up BOP and test.

Pick up and sting out of polish bore, lay down 4.5" tubing, and seal assembly

RIH with 2-7/8" work string to 6,480'.

Set balance cement plug from 6,480' to 6,380' with 20 sacks of Class G neat cement, displace with 37 BBLS.

PUH with 2-7/8" work string to 6,035'.

Set balance cement plug from 6,035' to 5,935' with 20 sacks of Class G neat cement, displace with 35 BBLS.

PUH with 2-7/8" work string to 5,510'.

Set balance cement plug from 5510' to 5364' with 30 sacks of class G neat cement, displace with 32 BBLS

POOH with work string.

#### **Intermediate Casing shoe:**

RIH with perf guns, Perforate 7" casing from 3224' to 3225'. 4 shot per foot.

Test perf for injectivity / circulation

RIH with work string to 3224'

Set balance plug with 50 sacks of class G neat Displace with 12 BBLS

POOH with work string 500' reverse clean out tubing volume.

Displace plug into 7" – 9 5/8" annulus 3 BBLS of water

Wait on cement

Tag cement top 3224' or higher

POOH with work string

### **Surface casing shoe and Top plug:**

RIH with split shot and split 7" casing collar around 370" +/-

POOH and lay down 7" casing.

RIH with perf gun and perforate at 369' to 371' with 4 SPF

Establish circulation to surface

RIH with tubing to 435' and pump 90 sx balance plug, displace with 1.6 BBLs

POOH with tubing

Wait on cement tag cement top 350' or higher

1 joint and 2 – 10' subs, 50 +/- set balance plug at 50' to surface.

### **Surface:**

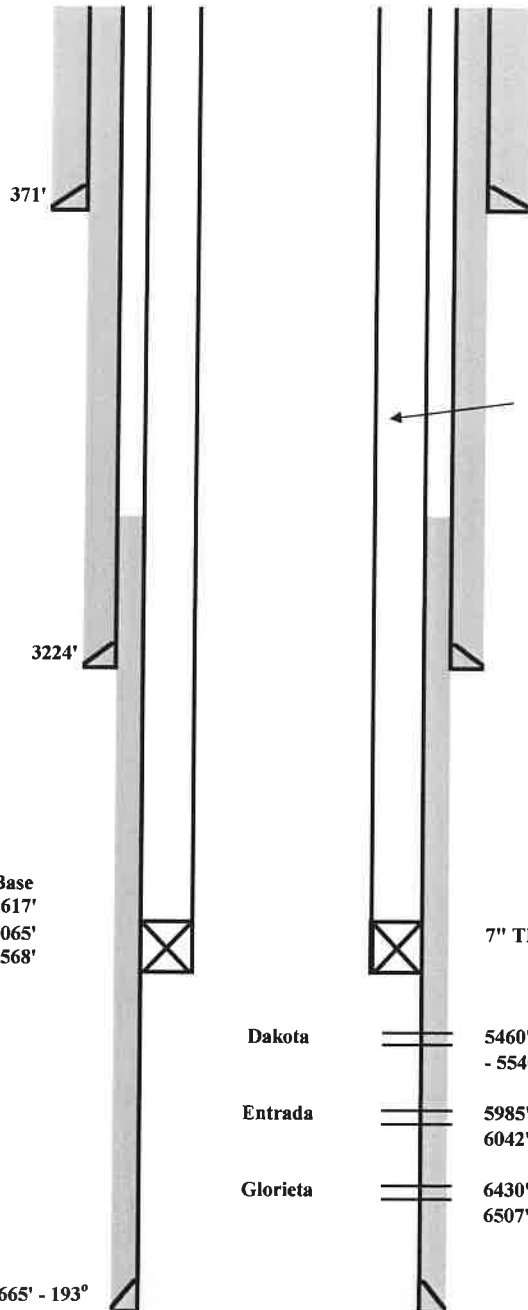
Cut off all casing strings off 4' below ground level

Install permanent marker as directed by NMOGCC

Reclaim location to Vermejo Park MEA specification.

# **CURRENT WELLBORE DIAGRAM**

LEASE: <u>Vermejo Park Ranch</u>	WELL: <u>A-500</u>	FIELD: <u>Crow Canyon</u>	API NO: <u>30-007-20892</u>
LOC: <u>338' FSL &amp; 2578' FEL</u>	SEC: <u>31</u>	T / R: <u>31N / 21E</u>	SPUD: <u>1/16/2008</u>
BHL: _____	GL: <u>7966'</u>	CTV/ST: <u>Colfax, NM</u>	COMPL: _____
CURRENT STATUS: <u>On Injection</u>	KB: <u>7978'</u>	DF: <u>7977'</u>	PBTD: _____
			TD: <u>6750'</u>



HOLE SIZE:	17-1/2"
CSG & SIZE:	13-3/8" 48# H-40
SET @:	371' w/ 94 bbls
CIRC:	Yes
TOC AT:	Surface by circ

4-1/2" 11.6 ppg L-80 IPC tubing w/ 4" seal assembly on EOT  
Set down weight 22000 lbs

HOLE SIZE:	12-1/4"
CSG & SIZE:	9-5/8" 40# J-55
SET @:	3224' w/ 980 sks
CIRC:	No
TOC AT:	??

## **Formation Data**

	Top	Base
Dakota	5452'	5617'
Entrada	5982'	6065'
Glorieta	6427'	6568'

7" THS 15 Liner Hanger Packer Full Bore 3.9"  
Hydraulic Set Packer - set @ 5430'

Dakota	5460' - 5480' (new), 5480' - 90', 5490' - 5520' (new), 5520' - 28', 5530' - 5540', 5540' - 5580' (new), 5580' - 90', 5590' - 5607' (592 holes)
Entrada	5985' - 5995' (new), 5998' - 6008', 6010' - 6040' (new), 6020' - 30', 6042' - 52', 6050' - 6060' (new) (320 holes)
Glorieta	6430' - 6460', 6460' - 70', 6470' - 6500' (new), 6495' - 6505', 6507' - 15', 6515' - 6550' (new), 6550' - 60' (552 holes)

BHT @ 6665' - 193°

TD @ 6750'

HOLE SIZE:	8-3/4"
CSG & SIZE:	7" 26# P-110
SET @:	6633' w/ 129 bbls
CIRC:	No
TOC AT:	3800'?? by CBL

# **PROPOSED P & A WELLBORE DIAGRAM**

LEASE: Vermejo Park Ranch	WELL: A-500	FIELD: Crow Canyon	API NO: 30-007-20892
LOC: 338' FSL & 2578' FEL	SEC: 31	T / R: 31N / 21E	SPUD: 1/16/2008
BHL:	GL: 7966'	CTY/ST: Colfax, NM	COMPL:
CURRENT STATUS: On Injection	KB: 7978'	DF: 7977'	PBTD:
			TD: 6750'

balance plug 50' to surface.

371'  
perf 12.25" w 4 shot PF  
90sxs class G neat  
1.6 BBL displacement

remove 7" casing

HOLE SIZE:	17-1/2"
CSG & SIZE:	13-3/8" 48# H-40
SET @:	371' w/ 94 bbls
CIRC:	Yes
TOC AT:	Surface by circ

3224'  
perf 7" CSG, 4 shot PF  
50 sxs Class G neat  
12 BBLs displacement

HOLE SIZE:	12-1/4"
CSG & SIZE:	9-5/8" 40# J-55
SET @:	3224' w/ 980 sks
CIRC:	No
TOC AT:	??

Balance plug 5510' to 5364'  
30 sxs class G neat  
32 BBL displacement

Balance plug 6035' to 5935'  
20 sx Class G neat cement  
35 BBL displacement

Balance plug 6480' to 6580'  
20 sx Class G neat cement  
37 BBL displacement

BHT @ 6665' - 193°

TD @ 6750'

## Formation Data

	Top	Base
Dakota	5452'	5617'
Entrada	5982'	6065'
Glorieta	6427'	6568'

7" THS 15 Liner Hanger Packer Full Bore 3.9"  
Hydraulic Set Packer - set @ 5430'

Dakota	5460' - 5480' (new), 5480' - 90', 5490' - 5520' (new), 5520' - 28', 5530' - 5540', 5540' - 5580' (new), 5580' - 90', 5590' - 5607' (592 holes)
Entrada	5985' - 5995' (new), 5998' - 6008', 6010' - 6040' (new), 6020' - 30', 6042' - 52', 6050' - 6060' (new) (320 holes)
Glorieta	6430' - 6460', 6460' - 70', 6470' - 6500' (new), 6495' - 6505', 6507' - 15', 6515' - 6550' (new), 6550' - 60' (552 holes)

HOLE SIZE:	8-3/4"
CSG & SIZE:	7" 26# P-110
SET @:	6633' w/ 129 bbls
CIRC:	No
TOC AT:	3800'?? by CBL

**District I**

1625 N. French Dr., Hobbs, NM 88240  
 Phone:(575) 393-6161 Fax:(575) 393-0720

**District II**

811 S. First St., Artesia, NM 88210  
 Phone:(575) 748-1283 Fax:(575) 748-9720

**District III**

1000 Rio Brazos Rd., Aztec, NM 87410  
 Phone:(505) 334-6178 Fax:(505) 334-6170

**District IV**

1220 S. St Francis Dr., Santa Fe, NM 87505  
 Phone:(505) 476-3470 Fax:(505) 476-3462

**State of New Mexico**  
**Energy, Minerals and Natural Resources**  
**Oil Conservation Division**  
**1220 S. St Francis Dr.**  
**Santa Fe, NM 87505**

CONDITIONS

Action 92964

**CONDITIONS**

Operator: Wapiti Operating, LLC 1310 W Sam Houston PKWY N Houston, TX 77043	OGRID: 328741
	Action Number: 92964
	Action Type: [C-103] NOI Plug & Abandon (C-103F)

**CONDITIONS**

Created By	Condition	Condition Date
kpickford	Notify NMOCD 24 Hours Prior to beginning operations	4/11/2022
kpickford	Ensure coverage from 6380-6330 (50' above the Glorietta perforations).	4/11/2022
kpickford	Ensure coverage from 5935-5885 (50' above the Entrada perforations).	4/11/2022
kpickford	Ensure coverage of casing shoe 3274-3174	4/11/2022
kpickford	Ensure coverage of surface casing shoe 421321	4/11/2022