

Submit 1 Copy To Appropriate District Office
 District I – (575) 393-6161
 1625 N. French Dr., Hobbs, NM 88240
 District II – (575) 748-1283
 811 S. First St., Artesia, NM 88210
 District III – (505) 334-6178
 1000 Rio Brazos Rd., Aztec, NM 87410
 District IV – (505) 476-3460
 1220 S. St. Francis Dr., Santa Fe, NM 87505

State of New Mexico
 Energy, Minerals and Natural Resources

OIL CONSERVATION DIVISION
 1220 South St. Francis Dr.
 Santa Fe, NM 87505

Form C-103
 Revised July 18, 2013

WELL API NO. 30-015-31905
5. Indicate Type of Lease STATE <input checked="" type="checkbox"/> FEE <input type="checkbox"/>
6. State Oil & Gas Lease No. VO-4917
7. Lease Name or Unit Agreement Name METROPOLIS AGI
8. Well Number #1
9. OGRID Number 147831
10. Pool name or Wildcat AGI - DEVONIAN

SUNDRY NOTICES AND REPORTS ON WELLS (DO NOT USE THIS FORM FOR PROPOSALS TO DRILL OR TO DEEPEN OR PLUG BACK TO A DIFFERENT RESERVOIR. USE "APPLICATION FOR PERMIT" (FORM C-101) FOR SUCH PROPOSALS.)	
1. Type of Well: Oil Well <input type="checkbox"/> Gas Well <input checked="" type="checkbox"/> Other Acid Gas Injection	
2. Name of Operator Lucid Energy Group	
3. Address of Operator 201 South 4 th Street, Artesia, NM 88210	
4. Well Location Unit Letter <u>K</u> : <u>1650</u> feet from the <u>SOUTH</u> line and <u>1650</u> feet from the <u>WEST</u> line Section <u>36</u> Township <u>18S</u> Range <u>25E</u> NMPM <u>EDDY</u> County	
11. Elevation (Show whether DR, RKB, RT, GR, etc.) 3498 GR	

12. Check Appropriate Box to Indicate Nature of Notice, Report or Other Data

NOTICE OF INTENTION TO: PERFORM REMEDIAL WORK <input type="checkbox"/> PLUG AND ABANDON <input type="checkbox"/> TEMPORARILY ABANDON <input type="checkbox"/> CHANGE PLANS <input type="checkbox"/> PULL OR ALTER CASING <input type="checkbox"/> MULTIPLE COMPL <input type="checkbox"/> DOWNHOLE COMMINGLE <input type="checkbox"/> CLOSED-LOOP SYSTEM <input type="checkbox"/> OTHER: <input type="checkbox"/>		SUBSEQUENT REPORT OF: REMEDIAL WORK <input type="checkbox"/> ALTERING CASING <input type="checkbox"/> COMMENCE DRILLING OPNS. <input type="checkbox"/> P AND A <input type="checkbox"/> CASING/CEMENT JOB <input type="checkbox"/> OTHER: MECHANICAL INTEGRITY TEST <input checked="" type="checkbox"/>	
--	--	--	--

13. Describe proposed or completed operations. (Clearly state all pertinent details, and give pertinent dates, including estimated date of starting any proposed work). SEE RULE 19.15.7.14 NMAC. For Multiple Completions: Attach wellbore diagram of proposed completion or recompletion.

The MIT was conducted after providing notice to NMOCD on Saturday, July 17, 2021 at 8:00 a.m (MT). The following is a step-by-step summary of the MIT:

1. The annular pressure was 200 psig at the casing valve prior to the start of the MIT.
2. The annulus was opened to the Pressure Services "kill" truck and pressure was bled off to 0 psig.
3. The chart recorder was installed and the kill truck slowly pressured the annulus to 450 psig with diesel at 8:25 a.m.
4. A leaky fitting was repaired and the annulus was pressured up again to 580 psig at 8:35 a.m.
5. The chart recorded the annular pressure for 35 minutes.
6. At 9:05 a.m the pressure remained at 580 psig.
7. At 9:10 the pressure was bled off to 200 psig and left on the annulus. The annular valves were shut and the kill truck disconnected from the well.

Please see the attached MIT pressure chart, calibration information and a picture of the chart clock set at 96 minutes.

I hereby certify that the information above is true and complete to the best of my knowledge and belief.

SIGNATURE Kim Hamlet TITLE EH&R Specialist DATE 7-19-2021
 Type or print name Kim Hamlet E-mail address: khamlet@lucid-energy.com PHONE: 575-810-6055
For State Use Only

APPROVED BY: _____ DATE _____
 Conditions of Approval (if any):

Accepted for record – NMOCD gc 4/20/2022

SPL

Pressure Recorder Calibration Certificate

Company Name: Pressure Services Certificate #: U1C041206_61821

Recorder Type: American Serial #: U1C041206

Pressure Range 1: 1000 Accuracy: +/- 0.2% PSIG

Pressure Range 2: NA Accuracy: +/- 0.2% PSIG

Temperature Range: NA Accuracy: NA

Pressure Pen 1						Temperature Pen		
Increasing Pressure (PSIG)			Decreasing Pressure (PSIG)			Temperature Test (F°)		
Applied Pressure	Indicated Pressure	Error %	Applied Pressure	Indicated Pressure	Error %	Applied Temperature	Indicated Temperature	Error %
0	0	0	800	800	0	0	0	0
100	100	0	600	600	0	0	0	0
300	300	0	400	400	0	0	0	0
500	500	0	200	200	0	0	0	0
700	700	0	50	50	0	0	0	0
1000	1000	0	0	0	0	0	0	0

Pressure Pen 2					
Increasing Pressure (PSIG)			Decreasing Pressure (PSIG)		
Applied Pressure	Indicated Pressure	Error %	Applied Pressure	Indicated Pressure	Error %
0	0	0	0	0	0
0	0	0	0	0	0
0	0	0	0	0	0
0	0	0	0	0	0
0	0	0	0	0	0
0	0	0	0	0	0
0	0	0	0	0	0

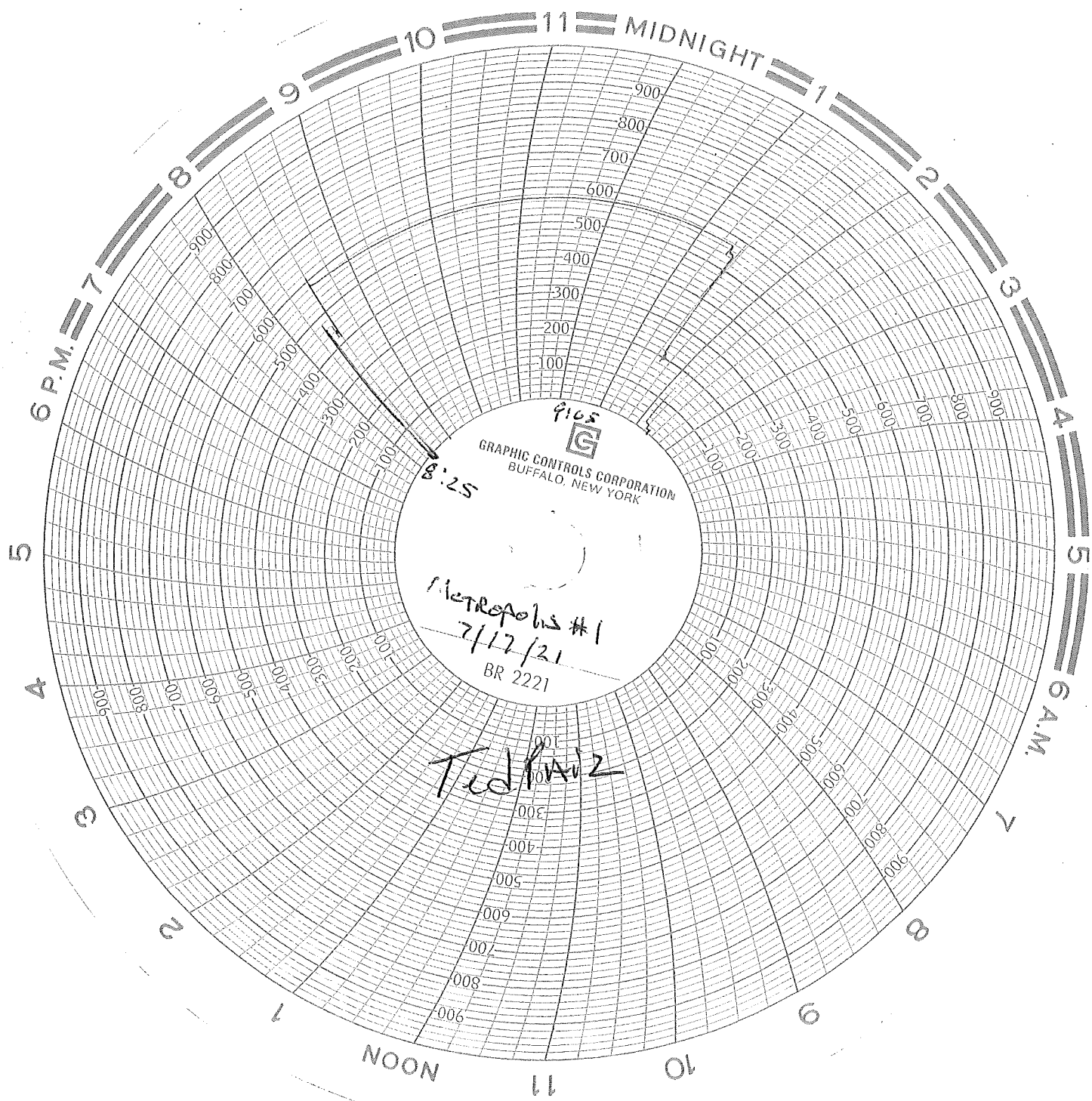
This is to certify that this instrument has been inspected and calibrated using a certified 10,000 psi Crystal Gauge.

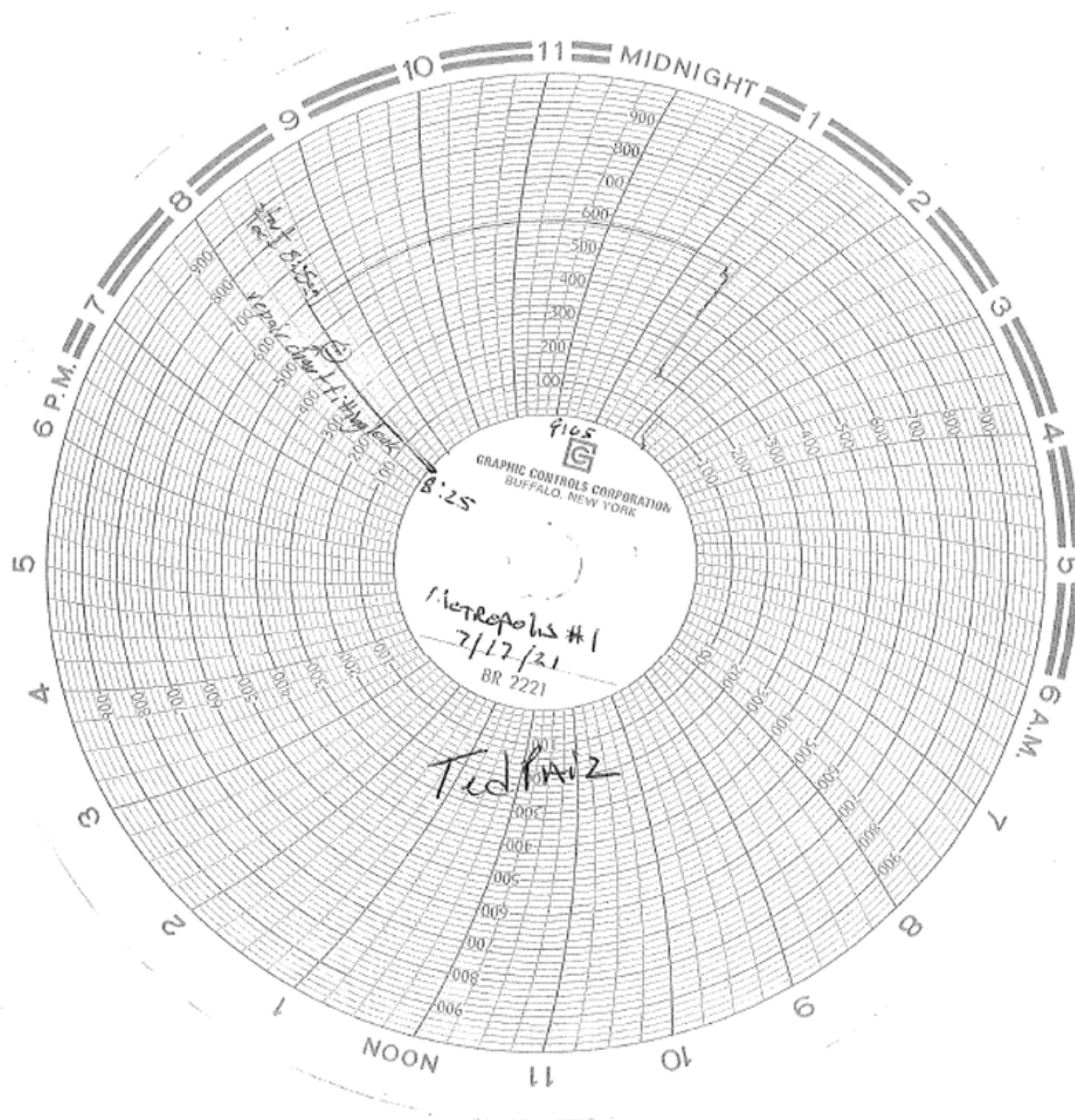
Calibrated By: Chris Villeneuve *CV*

Calibration Date: 6-18-2021

Pressure Recorder Certificate

SPL-Inc.com







District I
1625 N. French Dr., Hobbs, NM 88240
Phone:(575) 393-6161 Fax:(575) 393-0720
District II
811 S. First St., Artesia, NM 88210
Phone:(575) 748-1283 Fax:(575) 748-9720
District III
1000 Rio Brazos Rd., Aztec, NM 87410
Phone:(505) 334-6178 Fax:(505) 334-6170
District IV
1220 S. St Francis Dr., Santa Fe, NM 87505
Phone:(505) 476-3470 Fax:(505) 476-3462

State of New Mexico
Energy, Minerals and Natural Resources
Oil Conservation Division
1220 S. St Francis Dr.
Santa Fe, NM 87505

CONDITIONS

Action 36966

CONDITIONS

Operator: Lucid Artesia Company 201 S. Fourth Street Artesia, NM 88210	OGRID: 147831
	Action Number: 36966
	Action Type: [C-103] Sub. General Sundry (C-103Z)

CONDITIONS

Created By	Condition	Condition Date
gcordero	None	4/20/2022