

Well Name: CORBIN 13 FED A	Well Location: T18S / R32E / SEC 13 / NESE /	County or Parish/State: LEA / NM
Well Number: 01	Type of Well: OIL WELL	Allottee or Tribe Name:
Lease Number: NMNM53239	Unit or CA Name:	Unit or CA Number:
US Well Number: 3002531698	Well Status: Abandoned	Operator: COG OPERATING LLC

Notice of Intent

Sundry ID: 2632514

Type of Submission: Notice of Intent	Type of Action: Plug and Abandonment
Date Sundry Submitted: 09/03/2021	Time Sundry Submitted: 08:00
Date proposed operation will begin: 09/03/2021	

Procedure Description: 1. Tag existing 5 1/2" CIBP w/ 35' cmt on top @ 4975'. 2. Set 5 1/2" CIBP @ 4960'. Circ hole w/ MLF. Pressure test csg. Spot 25 sx cmt (S> 4960-4760'. 3. Spot 25 sx cmt @ 4523-4320'. WOC & Tag (8 5/8" Shoe) 4. Perf & Sqz 50 sx cmt @ 2670-2470'. (B/Sait) 5. Perf & Sqz 50 sx cmt @ 1630-1430'. WOC & Tag (T/Salt) 6. Perf & Sqz 110 sx cmt @ 518' to surface. (13 3/8" Shoe) Cut off well head, verify cmt at surface, weld on Dry Hole Marker.

Surface Disturbance

Is any additional surface disturbance proposed?: No

NOI Attachments

Procedure Description

- Corbin_13A_Fed_1_Proposed_WBD_20210913070735.pdf
- Corbin_13A_Fed_1_Current_WBD_20210913070722.pdf

Accepted for Record Only

X7

SUBJECT TO LIKE APPROVAL BY BLM

NMOCD 5/24/22

Well Name: CORBIN 13 FED A	Well Location: T18S / R32E / SEC 13 / NESE /	County or Parish/State: LEA / NM
Well Number: 01	Type of Well: OIL WELL	Allottee or Tribe Name:
Lease Number: NMNM53239	Unit or CA Name:	Unit or CA Number:
US Well Number: 3002531698	Well Status: Abandoned	Operator: COG OPERATING LLC

Conditions of Approval

Specialist Review

Corbin_13_Fed_A_01_Sundry_ID_2632514_P_A_20210925094812.pdf

Operator Certification

I certify that the foregoing is true and correct. Title 18 U.S.C. Section 1001 and Title 43 U.S.C. Section 1212, make it a crime for any person knowingly and willfully to make to any department or agency of the United States any false, fictitious or fraudulent statements or representations as to any matter within its jurisdiction. Electronic submission of Sundry Notices through this system satisfies regulations requiring a submission of Form 3160-5 or a Sundry Notice.

Operator Electronic Signature: RUTH SHOCKENCY	Signed on: SEP 13, 2021 07:07 AM
Name: COG OPERATING LLC	
Title: Regulatory Analyst	
Street Address: 600 W. ILLINOIS AVE.	
City: MIDLAND	State: TX
Phone: (575) 703-8321	
Email address: RUTH.SHOCKENCY@CONOCOPHILLIPS.COM	

Field Representative

Representative Name:		
Street Address:		
City:	State:	Zip:
Phone:		
Email address:		

BLM Point of Contact

BLM POC Name: LONG VO	BLM POC Title: Petroleum Engineer
BLM POC Phone: 5752345972	BLM POC Email Address: LVO@BLM.GOV
Disposition: Approved	Disposition Date: 09/25/2021
Signature: Long Vo	

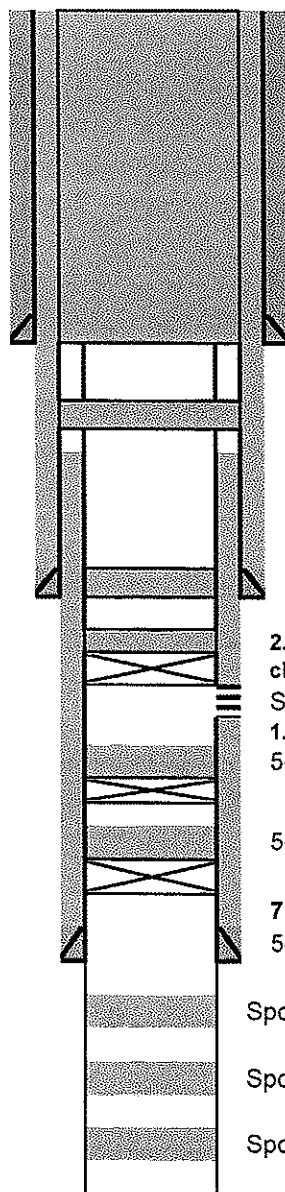
**Plug Abandonment
Subsequent Report**

OPERATOR NAME:	COG Operating LLC
LEASE NO.:	NMNM 53239
WELL NAME & NO.:	Corbin "13" A Federal #1
US WELL NUMBER:	30-025-31698
LOCATION:	Sec 13, T18S, R32E
COUNTY:	Lea, New Mexico

10/14/21 MIRU plugging equipment. ND pump jack head. 10/15/21 POH w/ rods. Dug out cellar, NU BOP. 10/18/21 POH w/ 50 stands of tbg & rods. Tagged existing 5 1/2" CIBP w/ 35' cmt on top @ 4975'. 10/19/21 Set 5 1/2" CIBP @ 4860'. Circ'd hole w/ 120 bbls MLF. Pressure tested csg, held 500 PSI. Spotted 60 sx class C cmt w/ 2% CACL @ 4860-4267'. WOC. Tagged plug @ 4276'. 10/20/21 Perf'd csg @ 2720'. Sqz'd 60 sx class C cmt w/ 2% CACL @ 2470'. WOC. Pressure tested csg, held 500 PSI. Tagged plug @ 2444'. Perf'd @ 1630'. Sqz'd 50 sx class C cmt @ 1630-1430'. WOC. 10/21/21 Tagged plug @ 1320'. Perf'd @ 518'. ND BOP, NU flange. Sqz'd 155 sx class C cmt @ 518' & circulated to surface. Pump'd 10 sx down 13 3/8" csg to surface. Rigged down & moved off. 10/26/21 Moved in backhoe and welder. Cut off well head & anchors. Mila Hackford w/ BLM verified cmt @ surface via picture text message. Welded on "Below Ground Dry Hole Marker". Backfilled cellar, cut off deadmen, cleaned location, and moved off.

COG Operating		PLUGGED	
Author:	Abby w/ BCM	API #	30-025-31698
Well Name	Corbin 13 A Fed #1	Legal	1830' FSL & 660' FEL
Formation	Delaware		Sec 13 T18S R32E
County	Lea		
State	New Mexico		
Spud Date	2/24/1993		
GL	3,837.4'		

Description	O.D.	Hole	Grade	Weight	Depth	Cmt Sx	TOC
Surface Csg	13.375"	17.5"	J-55	54.5	468'	475	surface
Inter Csg	8.625"	12.25"	J-55	32	4,473'	2,049	surface
Prod Csg	5.5"	7.875"	K-55	15.5	7,250'	950	3,050'
Liner							



Formation Tops	
Rustler	1301
T/Salt	1580
B/Salt	2620
Yates	2670
Queen	4020
Grbg	4634
Lovington	4944
Delaware	5898
Bone Springs	6846
Wolfcamp	10260
Penn	11304

17-1/2" Hole

13-3/8" (54.5#) @ 468' w/ 475 sx

5. Perf'd @ 518'. ND BOP, NU flange. Sqz'd 155 sx class C cmt @ 518' & circulated to surface. Pump'd 10 sx down 13 3/8" csg to surface.

4. Perf'd @ 1630'. Sqz'd 50 sx class C cmt @ 1630-1430'. WOC & Tagged plug @ 1320'.

TOC @ 3,050'

12-1/4" Hole

8-5/8" (32#) @ 4,473' w/ 2,049 sx

3. Perf'd csg @ 2720'. Sqz'd 60 sx class C cmt w/ 2% CACL @ 2470'. WOC. Pressure tested csg, held 500 PSI. Tagged plug @ 2444'.

2. Set 5 1/2" CIBP @ 4860'. Circ'd hole w/ 120 bbls MLF. Pressure tested csg, held 500 PSI. Spotted 60 sx class C cmt w/ 2% CACL @ 4860-4267'. WOC. Tagged plug @ 4276'.

Shot 1 JSPF @ 4,921'-4,928', 4,931'-4,935', & 4,944'-4,953' total 23 holes

1. Tagged existing 5 1/2" CIBP w/ 35' cmt on top @ 4975'.

5-1/2" CIBP @ 5,010' w/ 35' cmt to 4,975'

5-1/2" CIBP @ 7,050' w/ 35' cmt to 7,015'

7-7/8" Hole

5-1/2" (15.5#) @ 7,250' w/ 950 sx

Spot 50 sx cmt @ 7,500'

Spot 60 sx cmt from 10,335' - 10,185'

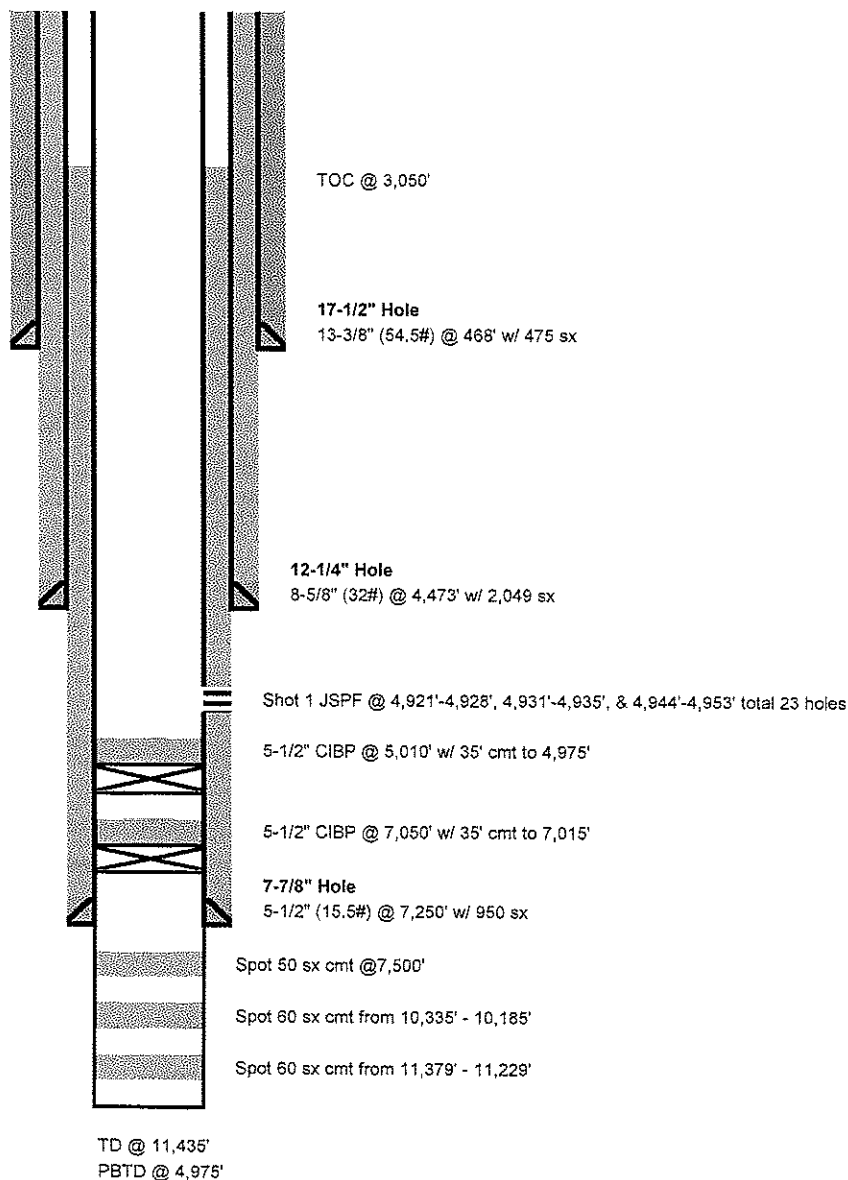
Spot 60 sx cmt from 11,379' - 11,229'

TD @ 11,435'

PBTd @ 4,975'

COG Operating			CURRENT
Author:	JCW (03/2021)	API #	30-025-31698
Well Name	Corbin 13 A Fed #1	Legal	1830' FSL & 660' FEL
Formation	Delaware		Sec 13 T18S R32E
County	Lea		
State	New Mexico		
Spud Date	2/24/1993		
GL	3,837.4'		

Description	O.D.	Hole	Grade	Weight	Depth	Cmt Sx	TOC
Surface Csg	13.375"	17.5"	J-55	54.5	468'	475	surface
Inter Csg	8.625"	12.25"	J-55	32	4,473'	2,049	surface
Prod Csg	5.5"	7.875"	K-55	15.5	7,250'	950	3,050'
Liner							



PLUG AND ABANDONMENT CONDITIONS OF APPROVAL

OPERATOR'S NAME:	COG Operating LLC
LEASE NO.:	NMNM53239
WELL NAME & NO.:	Corbin 13 Fed A 01
US Well Number:	3002531698
LOCATION:	Section 31, T.18 S., R.32 E., NMPM
COUNTY:	Lea County, New Mexico

1. Tag existing 5 1/2" CIBP w/ 35' cmt on top @ 4975'.
 2. Set 5 1/2" CIBP @ 4960'. Circ hole w/ MLF. Pressure test csg. Spot 25 sx cmt (S> 4960-4760'.
 3. Spot 25 sx cmt @ 4523-4320'. WOC & Tag (8 5/8" Shoe)
 4. Perf & Sqz ~~50~~⁶⁰ sx cmt @ ~~2670~~²⁷²⁰-2470'. (B/Salt) (Yates) cin/out) (WOC & TAG)
 5. Perf & Sqz 50 sx cmt @ 1630-1430'. WOC & Tag (T/Salt) cin/out)
 6. Perf & Sqz ~~110~~¹²⁵ sx cmt @ 518' to surface. (13 3/8" Shoe) cin/out) Verify @ surface
- Cut off well head, verify cmt at surface, weld on Dry Hole Marker.

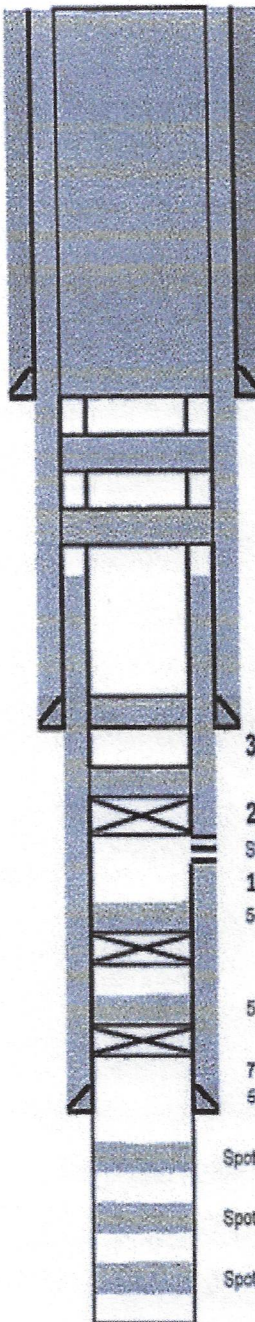
**Approval Subject to General Requirements and Special
Stipulations Attached**

Prairie Chicken, Low Cave

COG Operating			Proposed
Author:	JCW (03/2021)	API #	30-025-31698
Well Name	Corbin 13 A Fed #1	Legal	1830' FSL & 660' FEL
Formation	Delaware		Sec 13 T18S R32E
County	Lea		
State	New Mexico		
Spud Date	2/24/1993		
GL	3,837.4'		

Description	O.D.	Hole	Grade	Weight	Depth	Cmt Sx	TOC
Surface Csg	13.375"	17.5"	J-55	54.5	468'	475	surface
Inter Csg	8.625"	12.25"	J-55	32	4,473'	2,049	surface
Prod Csg	5.5"	7.875"	K-55	15.5	7,250'	950	3,050'
Liner							

Formation Tops	
Rustler	1301
T/Salt	1580
B/Salt	2620
Yates	2670
Queen	4020
Grbg	4634
Lovington	4944
Delaware	5898
Bone Springs	6846
Wolfcamp	10260
Penn	11304



17-1/2" Hole

13-3/8" (54.5#) @ 468' w/ 475' sx

6. Perf & Sqz 110 sx cmt @ 518' to surface. (13 3/8" Shoe)

5. Perf & Sqz 50 sx cmt @ 1630-1430'. WOC & Tag (T/Salt)

4. Perf & Sqz 50 sx cmt @ 2670-2470'. (B/Salt)

TOC @ 3,050'

12-1/4" Hole

8-5/8" (32#) @ 4,473' w/ 2,049' sx

3. Spot 25 sx cmt @ 4523-4320'. WOC & Tag (8 5/8" Shoe)

2. Set 5 1/2" CIBP @ 4960'. Circ hole w/ MLF. Pressure test csg. Spot 25 sx cmt @ 4960-4760'.

Shot 1 JSPF @ 4,921'-4,928', 4,931'-4,935', & 4,944'-4,953' total 23 holes

1. Tag existing 5 1/2" CIBP w/ 35' cmt on top @ 4975'.

5-1/2" CIBP @ 5,010' w/ 35' cmt to 4,975'

5-1/2" CIBP @ 7,050' w/ 35' cmt to 7,015'

7-7/8" Hole

5-1/2" (15.5#) @ 7,250' w/ 950' sx

Spot 50 sx cmt @ 7,500'

Spot 60 sx cmt from 10,335' - 10,185'

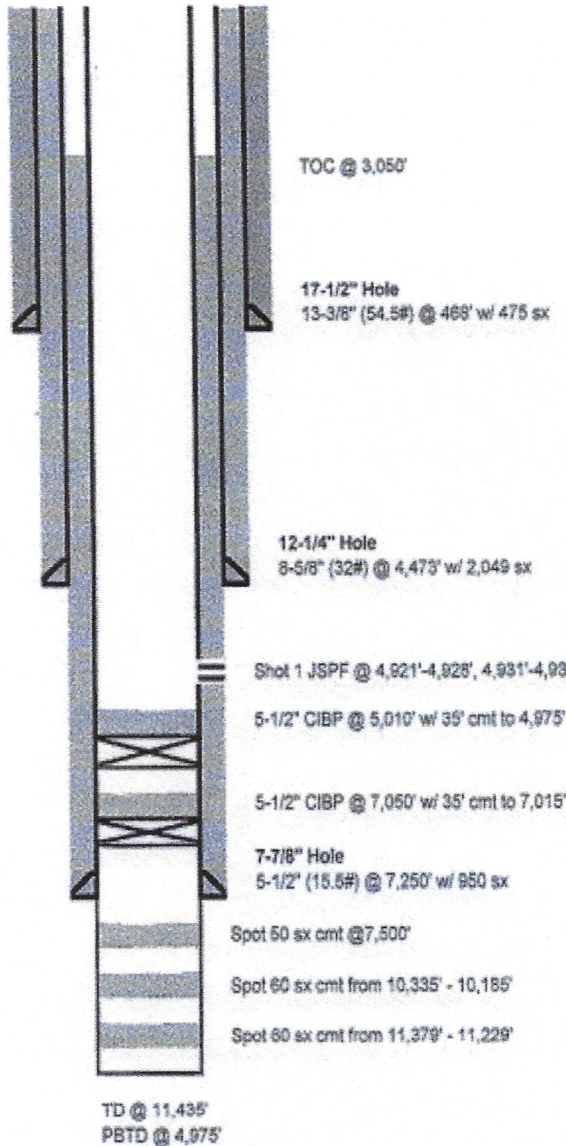
Spot 60 sx cmt from 11,379' - 11,229'

TD @ 11,435'

PBTD @ 4,975'

COG Operating LLC		Current	
Author:	JCW (03/2021)	API #	30-025-31698
Well Name	Corbin 13 A Fed #1	Legal	1830' FSL & 880' FEL
Formation	Delaware		Sec 13 T18S R32E
County	Lea		
State	New Mexico		
Spud Date	2/24/1993		
GL	3,837.4'		

Description	O.D.	Hole	Grade	Weight	Depth	Cmt Sx	TOC
Surface Csg	13.375"	17.5"	J-55	54.5	488'	475	surface
Inter Csg	8.625"	12.25"	J-55	32	4,473'	2,049	surface
Prod Csg	5.5"	7.875"	K-55	15.5	7,250'	950	3,050'
Liner							



Rust - 1301
 T/Salt - 1580
 B/Salt - 2620
 Yates - 2670
 Queen - 4020
 Garba - 4634
 Lovington - 4944
 Del - 5898
 Bone Springs - 6846
 Wolfcamp - 10,260
 Penn - 11,304

32.7451363
 -103.7133865

BUREAU OF LAND MANAGEMENT
Carlsbad Field Office
620 East Greene Street
Carlsbad, New Mexico 88220
575-234-5972

Permanent Abandonment of Federal Wells
Conditions of Approval (LPC Habitat)

Failure to comply with the following Conditions of Approval may result in a Notice of Incidents of Noncompliance (INC) in accordance with 43 CFR 3163.1.

1. Plugging operations shall commence within ninety (90) days from the approval date of this Notice of Intent to Abandon.

If you are unable to plug the well by the 90th day provide this office, prior to the 90th day, with the reason for not meeting the deadline and a date when we can expect the well to be plugged. Failure to do so will result in enforcement action.

The rig used for the plugging procedure cannot be released and moved off without the prior approval of the authorized officer. Failure to do so may result in enforcement action.

2. Notification: Contact the appropriate BLM office at least 24 hours prior to the commencing of any plugging operations. For wells in Chaves and Roosevelt County, call 575-627-0272; Eddy County, call 575-361-2822; Lea County, call 575-393-3612.

3. Blowout Preventers: A blowout preventer (BOP), as appropriate, shall be installed before commencing any plugging operation. The BOP must be installed and maintained as per API and manufacturer recommendations. The minimum BOP requirement is a 2M system for a well not deeper than 9,090 feet; a 3M system for a well not deeper than 13,636 feet; and a 5M system for a well not deeper than 22,727 feet.

4. Mud Requirement: Mud shall be placed between all plugs. Minimum consistency of plugging mud shall be obtained by mixing at the rate of 25 sacks (50 pounds each) of gel per 100 barrels of brine water. Minimum nine (9) pounds per gallon.

5. Cement Requirement: Sufficient cement shall be used to bring any required plug to the specified depth and length. Any given cement volumes on the proposed plugging procedure are merely estimates and are not final. Unless specific approval is received, no plug except the surface plug shall be less than 25 sacks of cement. Any plug that requires a tag will have a minimum WOC time of 4 hours.

In lieu of a cement plug across perforations in a cased hole (not for any other plugs), a bridge plug set within 50 feet to 100 feet above the perforations shall be capped with 25 sacks of cement. If a bailer is used to cap this plug, 35 feet of cement shall be sufficient. Before pumping or bailing cement on top of CIBP, tag will be required to verify depth. Based on depth, a tag of the cement may be deemed necessary.

Unless otherwise specified in the approved procedure, the cement plug shall consist of either Neat Class "C", for up to 7,500 feet of depth or Neat Class "H", for deeper than 7,500 feet plugs.

6. Below Ground Level Cap (Lesser Prairie-Chicken Habitat): All casing shall be cut-off at the base of the cellar or 3 feet below final restored ground level (whichever is deeper). The BLM is to be notified a minimum of 4 hours prior to the wellhead being cut off to verify that cement is to surface in the casing and all annuluses. Wellhead cut off shall commence within ten (10) calendar days of the well being plugged. If the cut off cannot be done by the 10th day, the BLM is to be contacted with justification to receive an extension for completing the cut off. Upon the plugging and subsequent abandonment of wells that are located in lesser prairie-chicken habitat, the casings shall be cut-off at the base of the cellar or 3 feet below final restored ground level (whichever is deeper). The well bore shall then be covered with a metal plate at least ¼ inch thick and welded in place. A weep hole shall be left in the plate and/or casing.

NMOCD also requires the operator to notify NMOCD when this type of dry hole marker is used. This can be done on the subsequent report of abandonment which is submitted to the BLM after the well is plugged. State that a below ground cap was installed as required in the COA's from the BLM.

7. Subsequent Plugging Reporting: Within 30 days after plugging work is completed, file one original and three copies of the Subsequent Report of Abandonment, Form 3160-5 to BLM. The report should give in detail the manner in which the plugging work was carried out, the extent (by depths) of cement plugs placed, and the size and location (by depths) of casing left in the well. Show date well was plugged.

8. Trash: All trash, junk and other waste material shall be contained in trash cages or bins to prevent scattering and will be removed and deposited in an approved sanitary landfill. Burial on site is not permitted.

Following the submission and approval of the Subsequent Report of Abandonment, surface restoration will be required. See attached reclamation objectives.

Timing Limitation Stipulation/ Condition of Approval for Lesser Prairie-Chicken:

From March 1st through June 15th annually, abandonment activities will be allowed except between the hours from 3:00 am and 9:00 am. Normal vehicle use on existing roads will not be restricted



United States Department of the Interior

BUREAU OF LAND MANAGEMENT

Carlsbad Field Office
620 E. Greene St.
Carlsbad, New Mexico 88220-6292
www.blm.gov/nm

TAKE PRIDE
IN AMERICA

In Reply Refer To: 1310

Reclamation Objectives and Procedures

Reclamation Objective: Oil and gas development is one of many uses of the public lands and resources. While development may have a short- or long-term effect on the land, successful reclamation can ensure the effect is not permanent. During the life of the development, all disturbed areas not needed for active support of production operations should undergo "interim" reclamation in order to minimize the environmental impacts of development on other resources and uses. At final abandonment, well locations, production facilities, and access roads must undergo "final" reclamation so that the character and productivity of the land and water are restored.

The long-term objective of final reclamation is to set the course for eventual ecosystem restoration, including the restoration of the natural vegetation community, hydrology, and wildlife habitats. In most cases this means returning the land to a condition approximating or equal to that which existed prior to the disturbance. The final goal of reclamation is to restore the character of the land and water to its pre-disturbance condition. The operator is generally not responsible for achieving full ecological restoration of the site. Instead, the operator must achieve the short-term stability, visual, hydrological, and productivity objectives of the surface management agency and take steps necessary to ensure that long-term objectives will be reached through natural processes.

To achieve these objectives, remove any and all contaminants, scrap/trash, equipment, pipelines and powerlines (Contact service companies, allowing plenty of time to have the riggers and power lines and poles removed prior to reclamation, don't wait till the last day and try to get them to remove infrastructure). Strip and remove caliche, contour the location to blend with the surrounding landscape, re-distribute the native soils, provide erosion control as needed, rip and seed as specified in the original APD COA. This will apply to well pads, facilities, and access roads. Barricade access road at the starting point. If reserve pits have not reclaimed due to salts or other contaminants, submit a plan for approval, as to how you propose to provide adequate restoration of the pit area.

1. The Application for Permit to Drill or Reenter (APD, Form 3160-3), Surface Use Plan of Operations must include adequate measures for stabilization and reclamation of disturbed lands. Oil and Gas operators must plan for reclamation, both interim and final, up front in the APD process as per Onshore Oil and Gas Order No. 1.
2. For wells and/or access roads not having an approved plan, or an inadequate plan for surface reclamation (either interim or final reclamation), the operator must submit a proposal describing the procedures for reclamation. For interim reclamation, the appropriate time for submittal would be when filing the Well Completion or Recompletion Report and Log (Form 3160-4). For final reclamation, the appropriate time for submittal would be when filing the Notice of Intent, or the Subsequent Report of Abandonment, Sundry Notices and Reports on Wells (Form 3160-5). Interim reclamation is to be completed within 6 months of well completion, and final reclamation is to be completed within 6 months of well abandonment.
3. The operator must file a Subsequent Report Plug and Abandonment (Form 3160-5) following the plugging of a well.
4. Previous instruction had you waiting for a BLM specialist to inspect the location and provide you with reclamation requirements. If you have an approved Surface Use Plan of Operation and/or an approved Sundry Notice, you are free to proceed with reclamation as per approved APD. If you

have issues or concerns, contact a BLM specialist to assist you. It would be in your interest to have a BLM specialist look at the location and access road prior to the removal of reclamation equipment to ensure that it meets BLM objectives. Upon conclusion submit a Form 3160-5, Subsequent Report of Reclamation. This will prompt a specialist to inspect the location to verify work was completed as per approved plans.

5. The approved Subsequent Report of Reclamation will be your notice that the native soils, contour and seedbed have been reestablished. If the BLM objectives have not been met the operator will be notified and corrective actions may be required.
6. It is the responsibility of the operator to monitor these locations and/or access roads until such time as the operator feels that the BLM objective has been met. If after two growing seasons the location and/or access roads are not showing the potential for successful revegetation, additional actions may be needed. When you feel the BLM objectives have been met submit a Final Abandonment Notice (FAN), Form 3160-5, stating that all reclamation requirements have been achieved and the location and/or access road is ready for a final abandonment inspection.
7. At this time the BLM specialist will inspect the location and/or access road. If the native soils and contour have been restored, and the revegetation is successful, the FAN will be approved, releasing the operator of any further liability of the location and/or access road. If the location and/or access road have not achieved the objective, you will be notified as to additional work needed or additional time being needed to achieve the objective.

If there are any questions, please feel free to contact any of the following specialists:

Jim Amos
Supervisory Petroleum Engineering Tech
575-234-5909 (Office), 575-361-2648 (Cell)

Arthur Arias
Environmental Protection Specialist
575-234-6230

Crisha Morgan
Environmental Protection Specialist
575-234-5987

Melissa Horn
Environmental Protection Specialist
575-234-5951

Kelsey Wade
Environmental Protection Specialist
575-234-2220

Trishia Bad Bear, Hobbs Field Station
Natural Resource Specialist
575-393-3612

District I
1625 N. French Dr., Hobbs, NM 88240
Phone:(575) 393-6161 Fax:(575) 393-0720
District II
811 S. First St., Artesia, NM 88210
Phone:(575) 748-1283 Fax:(575) 748-9720
District III
1000 Rio Brazos Rd., Aztec, NM 87410
Phone:(505) 334-6178 Fax:(505) 334-6170
District IV
1220 S. St Francis Dr., Santa Fe, NM 87505
Phone:(505) 476-3470 Fax:(505) 476-3462

State of New Mexico
Energy, Minerals and Natural Resources
Oil Conservation Division
1220 S. St Francis Dr.
Santa Fe, NM 87505

COMMENTS

Action 91012

COMMENTS

Operator: COG OPERATING LLC 600 W Illinois Ave Midland, TX 79701	OGRID: 229137
	Action Number: 91012
	Action Type: [C-103] NOI Plug & Abandon (C-103F)

COMMENTS

Created By	Comment	Comment Date
plmartinez	DATA ENTRY PM	5/24/2022

District I
1625 N. French Dr., Hobbs, NM 88240
Phone:(575) 393-6161 Fax:(575) 393-0720
District II
811 S. First St., Artesia, NM 88210
Phone:(575) 748-1283 Fax:(575) 748-9720
District III
1000 Rio Brazos Rd., Aztec, NM 87410
Phone:(505) 334-6178 Fax:(505) 334-6170
District IV
1220 S. St Francis Dr., Santa Fe, NM 87505
Phone:(505) 476-3470 Fax:(505) 476-3462

State of New Mexico
Energy, Minerals and Natural Resources
Oil Conservation Division
1220 S. St Francis Dr.
Santa Fe, NM 87505

CONDITIONS

Action 91012

CONDITIONS

Operator: COG OPERATING LLC 600 W Illinois Ave Midland, TX 79701	OGRID: 229137
	Action Number: 91012
	Action Type: [C-103] NOI Plug & Abandon (C-103F)

CONDITIONS

Created By	Condition	Condition Date
kfortner	Like approval from BLM	5/24/2022