

Submit a Copy To Appropriate District  
Office  
District I - (575) 393-6161  
1625 N. French Dr., Hobbs, NM 88240  
District II - (575) 748-1283  
811 S. First St., Artesia, NM 88210  
District III - (505) 334-6178  
1000 Rio Brazos Rd., Aztec, NM 87410  
District IV - (505) 476-3460  
1220 S. St. Francis Dr., Santa Fe, NM  
87505

State of New Mexico  
Energy, Minerals and Natural Resources

Form C-103  
Revised July 18, 2013

OIL CONSERVATION DIVISION  
1220 South St. Francis Dr.  
Santa Fe, NM 87505

SUNDRY NOTICES AND REPORTS ON WELLS (DO NOT USE THIS FORM FOR PROPOSALS TO DRILL OR TO DEEPEN OR PLUG BACK TO A DIFFERENT RESERVOIR. USE "APPLICATION FOR PERMIT" (FORM C-101) FOR SUCH PROPOSALS.)		WELL API NO. 30-025-02947
1. Type of Well: Oil Well <input checked="" type="checkbox"/> Gas Well <input type="checkbox"/> Other <input type="checkbox"/>		5. Indicate Type of Lease STATE <input checked="" type="checkbox"/> FEE <input type="checkbox"/>
2. Name of Operator MORNINGSTAR OPERATING LLC		6. State Oil & Gas Lease No.
3. Address of Operator 400 W 7TH ST, FORT WORTH, TX 76102		7. Lease Name or Unit Agreement Name CENTRAL VACUUM UNIT
4. Well Location Unit Letter <u>E</u> : 1980 feet from the <u>N</u> line and <u>621</u> feet from the <u>W</u> line Section <u>30</u> Township <u>17S</u> Range <u>35E</u> NMPM County <u>LEA</u>		8. Well Number 011
11. Elevation (Show whether DR, RKB, RT, GR, etc.) 4002GL		9. OGRID Number 330132
		10. Pool name or Wildcat VACUUM; GRAYBURG-SAN ANDRES

12. Check Appropriate Box to Indicate Nature of Notice, Report or Other Data

NOTICE OF INTENTION TO:		SUBSEQUENT REPORT OF:	
PERFORM REMEDIAL WORK <input type="checkbox"/>	PLUG AND ABANDON <input type="checkbox"/>	REMEDIAL WORK <input type="checkbox"/>	ALTERING CASING <input type="checkbox"/>
TEMPORARILY ABANDON <input type="checkbox"/>	CHANGE PLANS <input type="checkbox"/>	COMMENCE DRILLING OPNS. <input type="checkbox"/>	P AND A <input type="checkbox"/>
PULL OR ALTER CASING <input type="checkbox"/>	MULTIPLE COMPL <input type="checkbox"/>	CASING/CEMENT JOB <input type="checkbox"/>	
DOWNHOLE COMMINGLE <input type="checkbox"/>			
CLOSED-LOOP SYSTEM <input type="checkbox"/>			
OTHER: <input type="checkbox"/>		OTHER: TA STATUS EXT-MIT <input checked="" type="checkbox"/>	

13. Describe proposed or completed operations. (Clearly state all pertinent details, and give pertinent dates, including estimated date of starting any proposed work). SEE RULE 19.15.7.14 NMAC. For Multiple Completions: Attach wellbore diagram of proposed completion or recompletion.

MorningStar Operating LLC requests a TA Status Extension.

Attached is a current WBD and passing MIT: Start 560 psi, End 540 psi.

A passing Bradenhead Test Form has also been submitted.

**FINAL TA STATUS- EXTENSION**

Approval of TA EXPIRES: 5/31/24

Well needs to be **PLUGGED OR RETURNED**  
to **PRODUCTION**

BY THE DATE STATED ABOVE: X 7

Spud Date:

04/02/1939

Rig Release Date:

I hereby certify that the information above is true and complete to the best of my knowledge and belief.

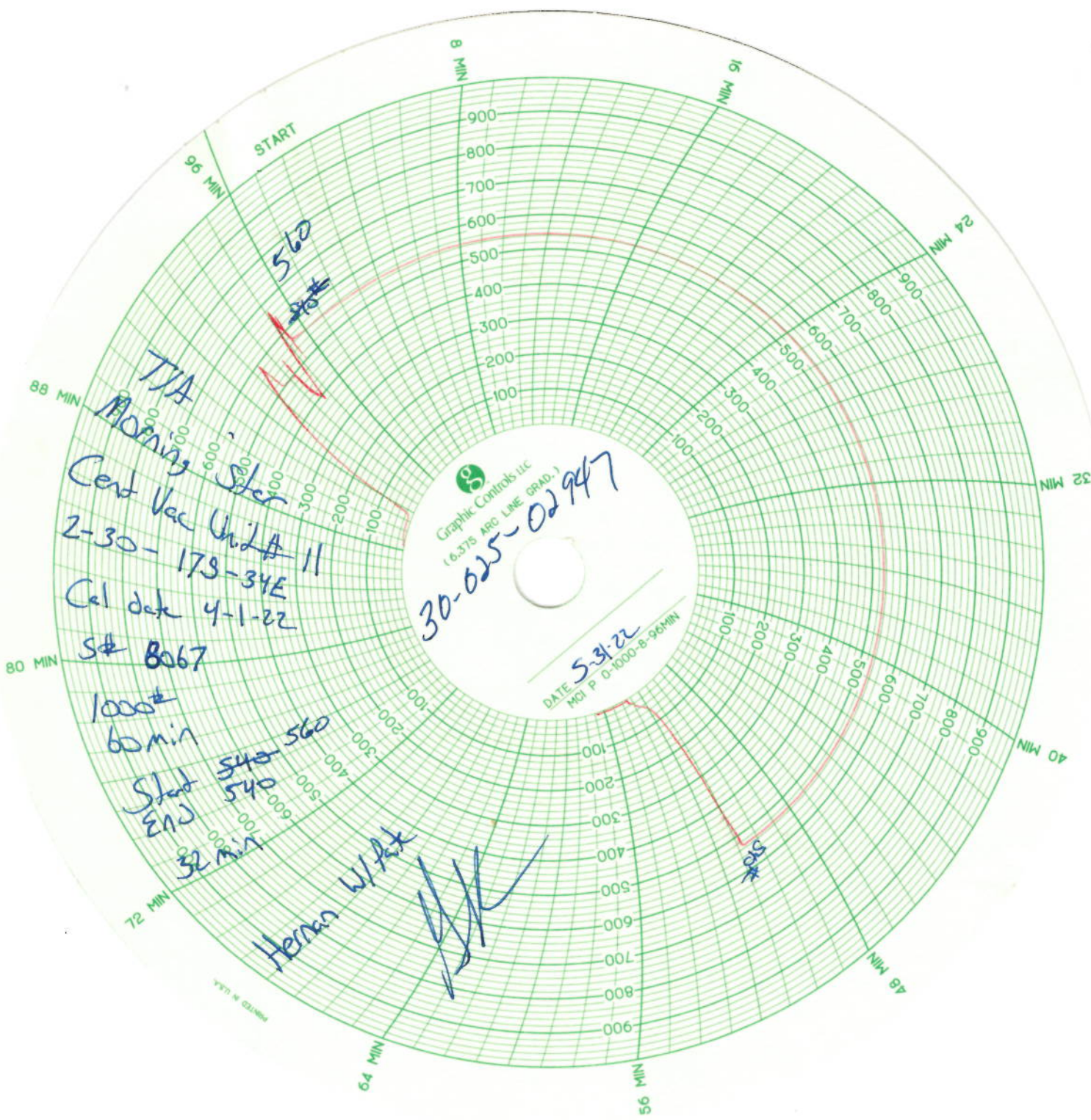
SIGNATURE Connie Blaylock TITLE REGULATORY ANALYST DATE 06/13/2022

Type or print name CONNIE BLAYLOCK E-mail address: cblaylock@mspartners.com PHONE: 817-334-7882

**For State Use Only**

APPROVED BY: Kerry Fortner TITLE Compliance Officer A DATE 6/21/22

Conditions of Approval:



## Wellbore Diagram

## CVU 11

Lease: Central Vacuum Unit  
 Well: 11  
 Field: Central Vacuum Unit  
 County: Lea St.: NM  
 Chevro: FA4101  
 API: 30-025-02947  
 Status: TA'd Oil Producer

Surf: 1980' FNL, 660' FWL  
 Unit Ltr.: E Section: 30  
 TSHP/Rng: S-17 E-35  
 Directions: Buckeye, NM

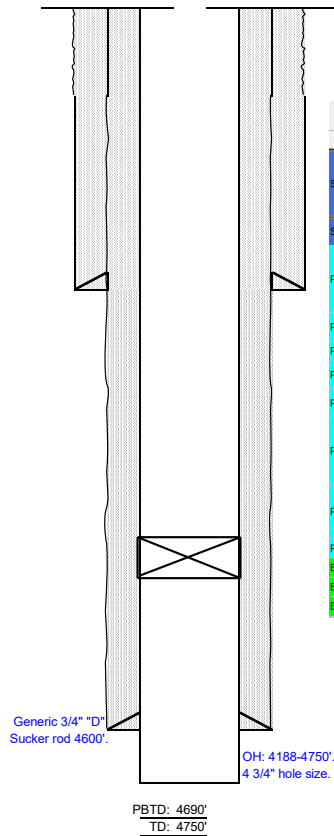
## Surface Casing

Size: 7 5/8  
 Wt., Grd.: 26.40# J-55  
 Depth: 1613'  
 Sxs Cmt: 450  
 Circulate: yes  
 TOC: surface  
 Hole Size: 9 5/8

## Production Casing

Size: 5 1/2  
 Wt., Grd.: 17# J-55  
 Depth: 4188'  
 Sxs Cmt: 200  
 Circulate: yes  
 TOC: surface  
 Hole Size: 7 7/8

Original OH:  
 4188-4750'.



KB:  
 DF:  
 GL: 3992'  
 Ini. Spud: 5/10/1939  
 Ini. Comp.: 5/21/1939

Component Grouping	Part Type	Name of Component	Quantity	Length	Top Depth	Bottom Depth	Connection Top	Connection Bottom
Surface Casing	Casing/Casing Liner OD 7.625	J-55 7.625 OD/ 26.40# Round Short 6.969 ID 6.844 Drift	1	1613.00	0.00	1613.00	7.6250 Nom Threaded & Coupled Round Short NUE	7.6250 Nom Threaded & Coupled Round Short NUE
Surface Casing	Cement (behind Casing)	Cement	1	1613.00	0.00	1613.00	N/A	N/A
Production Casing	Casing/Casing Liner OD 5.500	J-55 5.500 OD/ 17.00# Round Short 4.892 ID 4.767 Drift - N/A	1	4188.00	0.00	4188.00	5.5000 Nom Threaded & Coupled 8RD-Short NUE	5.5000 Nom Threaded & Coupled 8RD-Short NUE
Production Casing	Plug - Cement	Plug - Cement on Top of Bridge Plug - Bare	1	46.00	4050.00	4096.00	N/A	N/A
Production Casing	Bridge Plug	Bridge Plug	1	4.00	4096.00	4100.00	N/A	N/A
Production Casing	Bridge Plug	Bridge Plug Cast Iron 5.500 - Bare	1	4.00	4100.00	4104.00	N/A	N/A
Production Casing	Cement (behind Casing)	Cement	1	1888.00	2300.00	4188.00	N/A	N/A
Production Casing	Wellbore Completion Detail (Perforations, etc.)	Open Hole - Open	1	562.00	4188.00	4750.00	N/A	N/A
Production Casing	Wellbore Completion (Producing Interval)	Producing Interval (Completion) - Bare	1	562.00	4188.00	4750.00	N/A	N/A
Production Casing	Plug - Cement	Plug Back Total Depth	1	0.00	4690.00	4690.00	N/A	N/A
Borehole	Wellbore Hole	Wellbore Hole OD- 9.6250	1	1613.00	0.00	1613.00	N/A	N/A
Borehole	Wellbore Hole	Wellbore Hole OD- 6.7500 - N/A	1	2575.00	1613.00	4188.00	N/A	N/A
Borehole	Wellbore Hole	Wellbore Hole OD- 4.7500	1	562.00	4188.00	4750.00	N/A	N/A

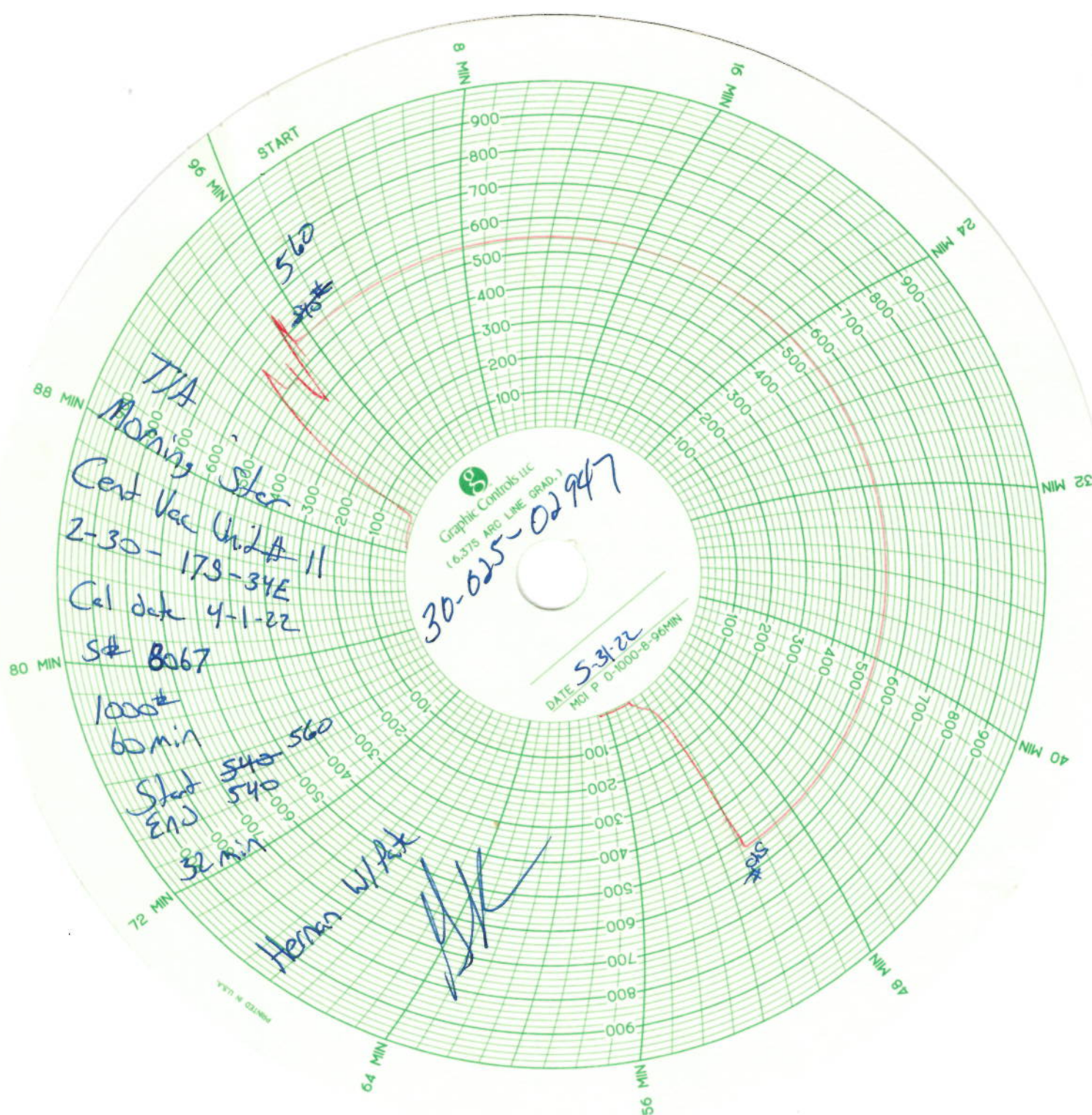
CIBP set at 4100' w/ 50' cmt on top

Generic 3/4" "D"  
 Sucker rod 4600'.

OH: 4188-4750'.  
 4 3/4" hole size.

PBTD: 4690'  
 TD: 4750'





## Wellbore Diagram

## CVU 11

Lease: Central Vacuum Unit  
 Well: 11  
 Field: Central Vacuum Unit  
 County: Lea St.: NM  
 Chevro: FA4101  
 API: 30-025-02947  
 Status: TA'd Oil Producer

Surf: 1980' FNL, 660' FWL  
 Unit Ltr.: E Section: 30  
 TSHP/Rng: S-17 E-35  
 Directions: Buckeye, NM

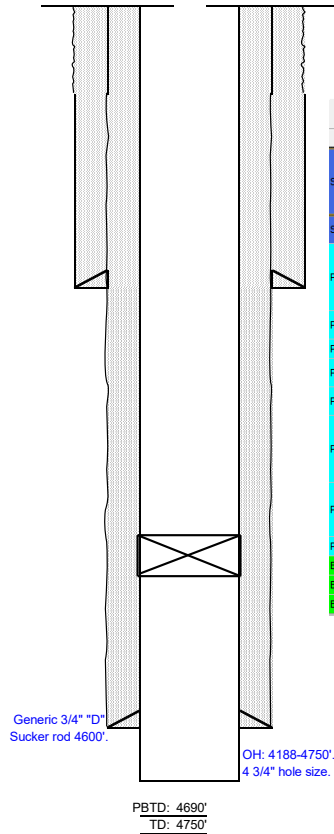
## Surface Casing

Size: 7 5/8  
 Wt., Grd.: 26.40# J-55  
 Depth: 1613'  
 Sxs Cmt: 450  
 Circulate: yes  
 TOC: surface  
 Hole Size: 9 5/8

## Production Casing

Size: 5 1/2  
 Wt., Grd.: 17# J-55  
 Depth: 4188'  
 Sxs Cmt: 200  
 Circulate: yes  
 TOC: surface  
 Hole Size: 7 7/8

Original OH:  
 4188-4750'.



KB:  
 DF:  
 GL: 3992'  
 Ini. Spud: 5/10/1939  
 Ini. Comp.: 5/21/1939

Component Grouping	Part Type	Name of Component	Quantity	Length	Top Depth	Bottom Depth	Connection Top	Connection Bottom
Surface Casing	Casing/Casing Liner OD 7.625	J-55 7.625 OD/ 26.40# Round Short 6.969 ID 6.844 Drift	1	1613.00	0.00	1613.00	7.6250 Nom Threaded & Coupled Round Short NUE	7.6250 Nom Threaded & Coupled Round Short NUE
Surface Casing	Cement (behind Casing)	Cement	1	1613.00	0.00	1613.00	N/A	N/A
Production Casing	Casing/Casing Liner OD 5.500	J-55 5.500 OD/ 17.00# Round Short 4.892 ID 4.767 Drift - N/A	1	4188.00	0.00	4188.00	5.5000 Nom Threaded & Coupled 8RD-Short NUE	5.5000 Nom Threaded & Coupled 8RD-Short NUE
Production Casing	Plug - Cement	Plug - Cement on Top of Bridge Plug - Bare	1	46.00	4050.00	4096.00	N/A	N/A
Production Casing	Bridge Plug	Bridge Plug	1	4.00	4096.00	4100.00	N/A	N/A
Production Casing	Bridge Plug	Bridge Plug Cast Iron 5.500 - Bare	1	4.00	4100.00	4104.00	N/A	N/A
Production Casing	Cement (behind Casing)	Cement	1	1888.00	2300.00	4188.00	N/A	N/A
Production Casing	Wellbore Completion Detail (Perforations, etc.)	Open Hole - Open	1	562.00	4188.00	4750.00	N/A	N/A
Production Casing	Wellbore Completion (Producing Interval)	Producing Interval (Completion) - Bare	1	562.00	4188.00	4750.00	N/A	N/A
Production Casing	Plug - Cement	Plug Back Total Depth	1	0.00	4690.00	4690.00	N/A	N/A
Borehole	Wellbore Hole	Wellbore Hole OD- 9.6250	1	1613.00	0.00	1613.00	N/A	N/A
Borehole	Wellbore Hole	Wellbore Hole OD- 6.7500 - N/A	1	2575.00	1613.00	4188.00	N/A	N/A
Borehole	Wellbore Hole	Wellbore Hole OD- 4.7500	1	562.00	4188.00	4750.00	N/A	N/A

CIBP set at 4100' w/ 50' cmt on top

Generic 3/4" "D"  
 Sucker rod 4600'.

OH: 4188-4750'.  
 4 3/4" hole size.

PBTD: 4690'  
 TD: 4750'

**District I**  
1625 N. French Dr., Hobbs, NM 88240  
Phone:(575) 393-6161 Fax:(575) 393-0720  
**District II**  
811 S. First St., Artesia, NM 88210  
Phone:(575) 748-1283 Fax:(575) 748-9720  
**District III**  
1000 Rio Brazos Rd., Aztec, NM 87410  
Phone:(505) 334-6178 Fax:(505) 334-6170  
**District IV**  
1220 S. St Francis Dr., Santa Fe, NM 87505  
Phone:(505) 476-3470 Fax:(505) 476-3462

**State of New Mexico**  
**Energy, Minerals and Natural Resources**  
**Oil Conservation Division**  
**1220 S. St Francis Dr.**  
**Santa Fe, NM 87505**

COMMENTS  
  
Action 116372

COMMENTS

Operator: MorningStar Operating LLC 400 W 7th St Fort Worth, TX 76102	OGRID: 330132
	Action Number: 116372
	Action Type: [C-103] Sub. Temporary Abandonment (C-103U)

COMMENTS

Created By	Comment	Comment Date
plmartinez	DATA ENTRY PM	6/23/2022

**District I**  
1625 N. French Dr., Hobbs, NM 88240  
Phone:(575) 393-6161 Fax:(575) 393-0720  
**District II**  
811 S. First St., Artesia, NM 88210  
Phone:(575) 748-1283 Fax:(575) 748-9720  
**District III**  
1000 Rio Brazos Rd., Aztec, NM 87410  
Phone:(505) 334-6178 Fax:(505) 334-6170  
**District IV**  
1220 S. St Francis Dr., Santa Fe, NM 87505  
Phone:(505) 476-3470 Fax:(505) 476-3462

**State of New Mexico**  
**Energy, Minerals and Natural Resources**  
**Oil Conservation Division**  
**1220 S. St Francis Dr.**  
**Santa Fe, NM 87505**

CONDITIONS  
  
Action 116372

CONDITIONS

Operator: MorningStar Operating LLC 400 W 7th St Fort Worth, TX 76102	OGRID: 330132
	Action Number: 116372
	Action Type: [C-103] Sub. Temporary Abandonment (C-103U)

CONDITIONS

Created By	Condition	Condition Date
kfortner	Final TA extension expires 5/31/24 Will need a plan of action forward at that point to PAQ or put back on production	6/21/2022