

Well Name: JIC APACHE I	Well Location: T23N / R3W / SEC 11 / SWSW /	County or Parish/State: RIO ARRIBA / NM
Well Number: 4	Type of Well: OIL WELL	Allottee or Tribe Name: JICARILLA APACHE
Lease Number: JIC167	Unit or CA Name:	Unit or CA Number:
US Well Number: 3003921382	Well Status: Oil Well Shut In	Operator: DJR OPERATING LLC

Notice of Intent

Sundry ID: 2682327

Type of Submission: Notice of Intent	Type of Action: Plug and Abandonment
Date Sundry Submitted: 07/15/2022	Time Sundry Submitted: 11:13
Date proposed operation will begin: 07/15/2022	

Procedure Description: This request is being submitted for engineering & geological review prior to onsite inspection as approved by Dave M. of the BLM. DJR Operating, LLC requests permission to Plug & Abandon the subject well according to the attached Procedure, Current & Proposed Wellbore Diagram.

Surface Disturbance

Is any additional surface disturbance proposed?: No

NOI Attachments

Procedure Description

NOI_PA_BLM_Submittal_20220715111328.pdf

Well Name: JIC APACHE 1	Well Location: T23N / R3W / SEC 11 / SWSW /	County or Parish/State: RIO ARRIBA / NM
Well Number: 4	Type of Well: OIL WELL	Allottee or Tribe Name: JICARILLA APACHE
Lease Number: JIC167	Unit or CA Name:	Unit or CA Number:
US Well Number: 3003921382	Well Status: Oil Well Shut In	Operator: DJR OPERATING LLC

Conditions of Approval

Specialist Review

General_Requirement_PxA_20220721130332.pdf
2682327_NOIA_I_4_3003921382_KR_07212022_20220721130231.pdf
23N3W11JICApache14KGR_20220721130211.pdf

Operator

I certify that the foregoing is true and correct. Title 18 U.S.C. Section 1001 and Title 43 U.S.C. Section 1212, make it a crime for any person knowingly and willfully to make to any department or agency of the United States any false, fictitious or fraudulent statements or representations as to any matter within its jurisdiction. Electronic submission of Sundry Notices through this system satisfies regulations requiring a

Operator Electronic Signature: SHAW-MARIE FORD	Signed on: JUL 15, 2022 11:13 AM
Name: DJR OPERATING LLC	
Title: Regulatory Specialist	
Street Address: 1 Road 3263	
City: Aztec	State: NM
Phone: (505) 632-3476	
Email address: sford@djrlc.com	

Field

Representative Name:		
Street Address:		
City:	State:	Zip:
Phone:		
Email address:		

BLM Point of Contact

BLM POC Name: KENNETH G RENNICK	BLM POC Title: Petroleum Engineer
BLM POC Phone: 5055647742	BLM POC Email Address: krennick@blm.gov
Disposition: Approved	Disposition Date: 07/21/2022
Signature: Kenneth Rennick	

Plug and Abandonment Procedure
for
DJR Operating, LLC
Jicarilla Apache I 4
API # 30-039-21382
SW/SW, Unit M, Sec. 11, T23N, R3W
Rio Arriba County, NM

1. Hold pre-job meeting, comply with all NMOCD, BLM and environmental regulations.
2. Check and record tubing, casing and bradenhead pressures.
3. Remove existing piping from casing valve, RU blow lines from casing valves and blow down casing pressure. Kill well as necessary. Ensure that well is dead or on a vacuum.
4. MIRU hot oil unit, pump hot water to clear tubing of paraffin.
5. TOOH with rods and pump. Lay down to be sent in for storage/salvage.
6. ND WH, NU BOP, function test BOP.
7. Trip out of hole with 2 3/8" tubing. LD tubing to be sent in for storage/salvage.
8. PU workstring, TIH with bit and scraper, make sure that the bit and scraper will go below 7190'. TOOH.

NOTE: Based on good cement circulated to surface as well as cement fill up calculations, only inside plugs are shown. However, due to the remedial work carried out after during primary cement operations, several inside/outside plugs will most likely be required after CBL evaluation in Step 10.

9. Plug 1: Dakota perforations: RU cement equipment. PU and TIH with 5-1/2" CR and set near 7190'. Pressure test tubing to 1000 psi. Sting out and pressure test casing to 600 psi. Sting back into CR and attempt to squeeze below with 10 sx. Sting out and pump water to ensure tubing is clear.

10. RU and RIH with CBL. Run from CR to surface. Send CBL log to Kenny Rennick krennick@blm.gov, Monica Kueling monica.kueling@state.nm.us, Brandon Powell PowellBrandon.powell@state.nm.us, Loren Diede ldiede@djrlc.com, Scott Lindsay slindsay@djrlc.com. Plugs may be adjusted per log run.
11. Plug 2: Dakota top: TIH. Spot cement on top of CR to bring TOC to 7153'. Pump water to ensure tubing is clear.
12. Plug 3: Gallup: Mix and spot balanced plug from 6194-6094'. Pump water to assure that tubing is clear.
13. Plug 4: Mancos: Mix and spot a balanced plug from 5340-5240'. Pump water to assure that tubing is clear.
14. Plug 5: Mesa Verde: Mix and spot a balanced plug from 4698-4598'. Pump water to assure that tubing is clear.
15. Plug 6: Chacra: Mix and spot a balanced plug from 3880-3780'. Pump water to ensure tubing is clear.
16. Plug 7: Pictured Cliffs, Fruitland, Kirtland, and Ojo Alamo: Mix and spot a balanced plug from 3063-2552'. Pump water to assure that tubing is clear.
17. Plug 8: Nacimiento: Mix and spot a balanced plug from 3063-2552'. Pump water to assure that tubing is clear.
18. Plug 9: Surface casing shoe and surface plug: Spot plug from 429' to surface inside 5-1/2" casing.
19. RD cementing equipment. Cut off wellhead, fill annuli with cement, as necessary. **Install P&A marker as per BIA requirements.** Record GPS coordinates for P&A marker and the final P&A report. Photograph the P&A marker and attach to the report.
20. RD and MO all rig and cement equipment. Assure that location is free of trash and contamination before moving off.
21. Send all reports and attachments to DJR Aztec office for regulatory filings.

Note: All cement is to be Class G mixed at 15.8 ppg yield 1.15 ft³/sk. Cement volumes are to include inside capacities +50' and outside capacities + 100% excess.

PxA marker is to be 12"x18" with rounded corners and installed below grade no deeper than 2'.

Current Wellbore Diagram
DJR Operating, LLC
Jicarilla Apache I 4
 API # 30-039-21382
 SW/SW, Unit M, Sec 11, T23N, R3W
 Rio Arriba County, NM

GL 7196' From OH logs
 KB 7210' From OH logs
 Spud Date 10/28/1984

SURF CSG

Hole size 13.75"
 Csg Size: 9.625"
 Wt: 32#
 Grade: H-40
 ID: 9.001"
 Depth 379'
 Csg cap ft³: 0.4418
 TOC: Surf

FORMATION TOPS

Nacimiento	2015'
Ojo Alamo	2602'
Kirtland	2773'
Fruitland	2842'
Pictured Cliffs	3013'
Chacra	3830'
Mesa Verde	4648'
Mancos	5290'
Gallup	6144'
Dakota	7203'

PROD CSG

Hole size 8.75/7.875"
 Csg Size: 5.5"
 Wt: 17#
 Grade: K-55
 ID: 4.892"
 Depth 7599'
 Csg cap ft³: 0.1305

8.75" OH to 5300'

7.875" OH to 7600'

Stg 1 TOC (Calc.) 5794'

Stg 2 TOC (Calc.) To DV tool. Circulated 21 sx cement

Stg 3 TOC (Calc.) Circulated 200 sx cement

Cement fell back on last stage. Ran 1-1/4" IJ
 tubing between 5-1/2" and 9-5/8" casing and
 cemented with another 200 sx to surface. Left
 tubing buried in cement.

DV Tool at 3754'

DV tool squeezed with 79 sx

DV Tool at 5785'

Dakota perms 7204-7338'

PBTD 7552'
 TD 7600'

Prod Tubing Detail:

End of tubing at 7314'. No other information
 available

Rod Detail:

No rod information available

Squeezed across perforated interval

Proposed Wellbore Diagram
DJR Operating, LLC
Jicarilla Apache I 4
 API # 30-039-21382
 SW/SW, Unit M, Sec 11, T23N, R3W
 Rio Arriba County, NM

GL 7196' From OH logs
 KB 7210' From OH logs
 Spud Date 10/28/1984

SURF CSG

Hole size	13.75"	<u>FORMATION TOPS</u>	
Csg Size:	9.625"	Nacimiento	2015'
Wt:	32#	Ojo Alamo	2602'
Grade:	H-40	Kirtland	2773'
ID:	9.001"	Fruitland	2842'
Depth	379'	Pictured Cliffs	3013'
Csg cap ft ³ :	0.4418	Chacra	3830'
TOC:	Surf	Mesa Verde	4648'
		Mancos	5290'
		Gallup	6144'
		Dakota	7203'

PROD CSG

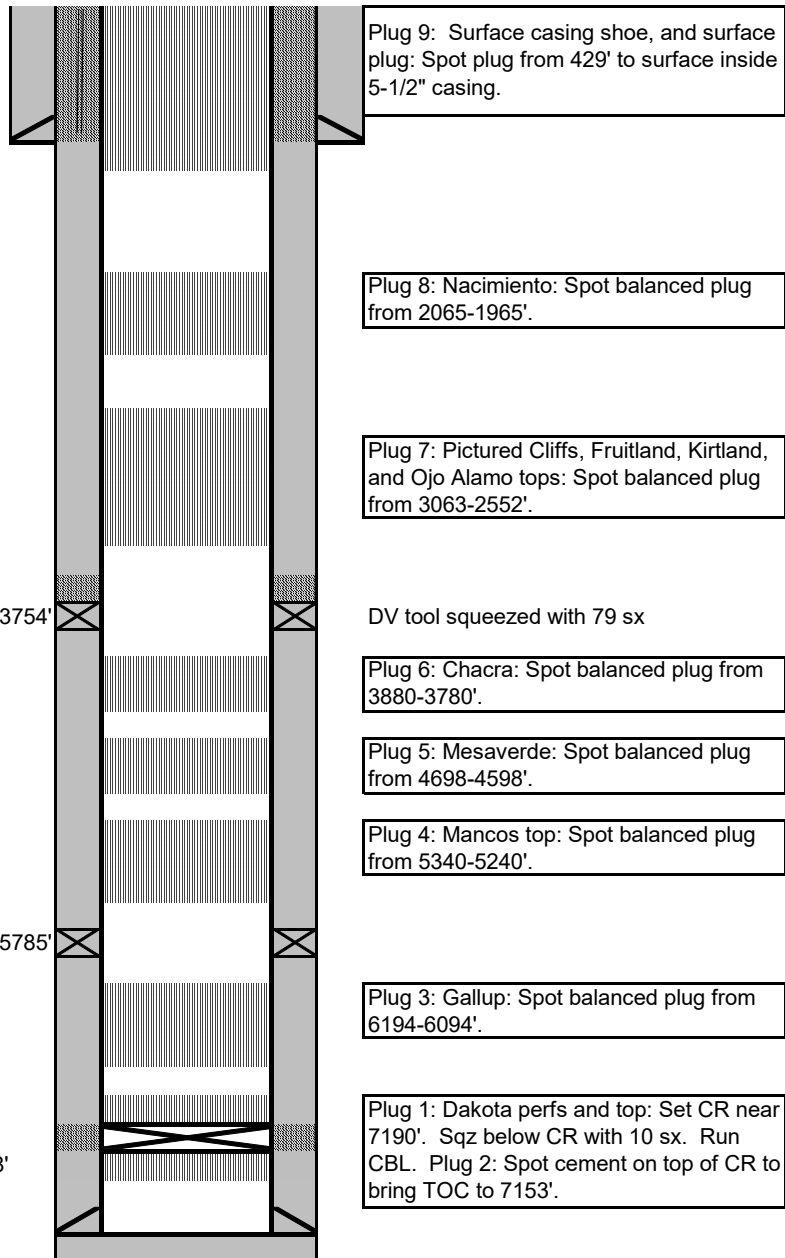
Hole size	8.75/7.875"
Csg Size:	5.5"
Wt:	17#
Grade:	K-55
ID:	4.892"
Depth	7599'
Csg cap ft ³ :	0.1305
8.75" OH to 5300'	
7.875" OH to 7600'	
Stg 1 TOC (Calc.)	5794'
Stg 2 TOC (Calc.)	To DV tool. Circulated 21 sx cement
Stg 3 TOC (Calc.)	Circulated 200 sx cement

Cement fell back on last stage. Ran 1-1/4" IJ tubing between 5-1/2" and 9-5/8" casing and cemented with another 200 sx to surface. Left tubing buried in cement.

NOTE: Based on cement circulated to surface as well as cement calculations, only inside plugs are shown. Based on remedial work during primary cementing, several inside/outside plugs will most likely be required after CBL evaluation.

Dakota perms 7204-7338'

PBTD 7552'
 TD 7600'



**UNITED STATES DEPARTMENT OF THE INTERIOR
BUREAU OF LAND MANAGEMENT
FARMINGTON DISTRICT OFFICE
6251 COLLEGE BLVD.
FARMINGTON, NEW MEXICO 87402**

AFMSS 2 Sundry ID 2682327

Attachment to notice of Intention to Abandon

Well: JIC Apache I 4

CONDITIONS OF APPROVAL

1. Plugging operations authorized are subject to the attached "General Requirements for Permanent Abandonment of Wells on Federal and Indian Lease."
2. Farmington Office is to be notified at least 24 hours before the plugging operations commence at (505) 564-7750.

You are also required to place cement excesses per 4.2 and 4.4 of the attached General Requirements.

Office Hours: 7:45 a.m. to 4:30 p.m.

K. Rennick 7/21/2022

**GENERAL REQUIREMENTS FOR
PERMANENT ABANDONMENT OF WELLS ON FEDERAL AND INDIAN LEASES
FARMINGTON FIELD OFFICE**

1.0 The approved plugging plans may contain variances from the following minimum general requirements.

1.1 Modification of the approved plugging procedure is allowed only with the prior approval of the Authorized Officer, Farmington Field Office.

1.2 Requirements may be added to address specific well conditions.

2.0 Materials used must be accurately measured. (densometer/scales)

3.0 A tank or lined pit must be used for containment of any fluids from the wellbore during plugging operations and all pits are to be fenced with woven wire. These pits will be fenced on three sides and once the rig leaves location, the fourth side will be fenced.

3.1 Pits are not to be used for disposal of any hydrocarbons. If hydrocarbons are present in the pit, the fluids must be removed prior to filling in.

4.0 All cement plugs are to be placed through a work string. Cement may be bull-headed down the casing with prior approval. Cement caps on top of bridge plugs or cement retainers may be placed by dump bailer.

4.1 The cement shall be as specified in the approved plugging plan.

4.2 All cement plugs placed inside casing shall have sufficient volume to fill a minimum of 100' of the casing, or annular void(s) between casings, plus an excess volume sufficient to provide for 50 linear feet of fill above the plug.

4.3 Surface plugs may be no less than 50' in length.

4.4 All cement plugs placed to fill annular void(s) between casing and the formation shall be of sufficient volume to fill a minimum of 100' of the annular space plus 100% excess, calculated using the bit size, or 100' of annular capacity, determined from a caliper log, plus an excess volume sufficient to provide for 50 linear feet of fill above the plug.

4.5 All cement plugs placed to fill an open hole shall be of sufficient volume to fill a minimum of 100' of hole, as calculated from a caliper log, plus an excess volume sufficient to provide for 50 linear feet of fill above the plug. In the absence of a caliper log, an excess of 100% shall be required.

4.6 A cement bond log or other accepted cement evaluation tool is required to be run if one had not been previously ran or cement did not circulate to surface during the original casing cementing job or subsequent cementing jobs.

5.0 All cement plugs spotted across, or above, any exposed zone(s), when; the wellbore is not full of fluid or the fluid level will not remain static, and in the case of lost circulation or partial returns during cement placement, shall be tested by tagging with the work string.

- 5.1 The top of any cement plug verified by tagging must be at or above the depth specified in the approved plan, without regard to any excess.
- 5.2 Testing will not be required for any cement plug that is mechanically contained by use of a bridge plug and/or cement retainer, if casing integrity has been established.
- 5.3 Any cement plug which is the only isolating medium, for a fresh water interval or a zone containing a prospectively valuable deposit of minerals, shall be tested by tagging.
- 5.4 If perforations are required below the surface casing shoe, a 30 minute minimum wait time will be required to determine if gas and/or water flows are present. If flow is present, the well will be shut-in for a minimum of one hour and the pressure recorded. Short or long term venting may be necessary to evacuate trapped gas. **If only a water flow occurs with no associated gas, shut well in and record the pressures. Contact the Engineer as it may be necessary to change the cement weight and additives.**

6.0 Before setting any cement plugs the hole needs to be rolled. All wells are to be controlled by means of a fluid that is to be of a weight and consistency necessary to stabilize the wellbore. This fluid shall be left in place as filler between all plugs.

- 6.1 Drilling mud may be used as the wellbore fluid in open hole plugging operations.
- 6.2 The wellbore fluid used in cased holes shall be of sufficient weight to balance known pore pressures in all exposed formations.

7.0 A blowout preventer and related equipment (BOPE) shall be installed and tested prior to working in a wellbore with any exposed zone(s); (1) that are over pressured, (2) where the pressures are unknown, or (3) known to contain H₂S.

8.0 Within 30 days after plugging work is completed, file a Sundry Notice, Subsequent Report of Abandonment (Form 3160-5), five copies, with the Field Manager, Bureau of Land Management, 6251 College Blvd., Suite A, Farmington, NM 87402. The report should show the manner in which the plugging work was carried out, the extent, by depth(s), of cement plugs placed, and the size and location, by depth(s), of casing left in the well. Show date well was plugged.

9.0 All permanently abandoned wells are to be marked with a permanent monument as specified in 43 CFR 3162.6(d). Unless otherwise approved.

10.0 If this well is located in a Specially Designated Area (SDA), compliance with the appropriate seasonal closure requirements will be necessary.

All of the above are minimum requirements. Failure to comply with the above conditions of approval may result in an assessment for noncompliance and/or a Shut-in Order being issued pursuant to 43 CFR 3163.1. You are further advised that any instructions, orders or decisions issued by the Bureau of Land Management are subject to administrative review pursuant to 43 CFR 3165.3 and appeal pursuant to 43 CFR 3165.4 and 43 CFR 4.700.

BLM FLUID MINERALS P&A Geologic Report

Date Completed: 07/21/2022

Well No. Jicarilla Apache I 4 (API# 30-039-21382)		Location:	SWSW				
Lease No. JIC167		Sec. 11	T23N			R3W	
Operator DJR Operating, LLC		County	Rio Arriba		State	New Mexico	
Total Depth 7600'	PBTD 7552'	Formation Dakota					
Elevation (GL) 7196'		Elevation (KB) 7210'					

Geologic Formations	Est. Top	Est. Bottom	Log Top	Log Bottom	Remarks
San Jose Fm					Surface/freshwater sands
Nacimiento Fm			2015		Possible freshwater sands
Ojo Alamo Ss			2602		Aquifer (possible freshwater)
Kirtland Shale			2773		
Fruitland Fm			2842		Coal/Gas/Possible water
Pictured Cliffs Ss			3013		Gas
Lewis Shale					
Chacra			3830		Gas
Cliff House			4648		Water/Possible gas
Menefee Fm					Coal/Ss/Water/Possible O&G
Point Lookout Ss					Probable water/Possible O&G
Mancos			5290		Water/Possible gas
Gallup			6144		O&G/Water
Greenhorn					
Graneros Shale					
Dakota Ss			7203		O&G/Water

Remarks:

P & A

Reference Well:

- Dakota perforations 7204 – 7338'

Prepared by: Kenneth Rennick

District I
1625 N. French Dr., Hobbs, NM 88240
Phone:(575) 393-6161 Fax:(575) 393-0720
District II
811 S. First St., Artesia, NM 88210
Phone:(575) 748-1283 Fax:(575) 748-9720
District III
1000 Rio Brazos Rd., Aztec, NM 87410
Phone:(505) 334-6178 Fax:(505) 334-6170
District IV
1220 S. St Francis Dr., Santa Fe, NM 87505
Phone:(505) 476-3470 Fax:(505) 476-3462

State of New Mexico
Energy, Minerals and Natural Resources
Oil Conservation Division
1220 S. St Francis Dr.
Santa Fe, NM 87505

CONDITIONS

Action 128018

CONDITIONS

Operator: DJR OPERATING, LLC 1 Road 3263 Aztec, NM 87410	OGRID: 371838
	Action Number: 128018
	Action Type: [C-103] NOI Plug & Abandon (C-103F)

CONDITIONS

Created By	Condition	Condition Date
kpickford	Notify NMOCD 24 Hours Prior to beginning operations	7/27/2022
kpickford	Adhere to BLM approved COAs and plugs. See GEO report.	7/27/2022