

Page 1 of 40
Received by OGD: 4/19/2022 1:19:50 PM
Released to Imaging: 8/10/2022 3:41:32 PM

District I
1625 N. French Dr., Hobbs, NM 88240
District II
1301 W. Grand Avenue, Artesia, NM 88210
District III
1000 Rio Brazos Road, Aztec, NM 87410
District IV
1220 S. St. Francis Dr., Santa Fe, NM 87505

State of New Mexico
Energy Minerals and Natural Resources
Department
Oil Conservation Division
1220 South St. Francis Dr.
Santa Fe, NM 87505

Form C-14
July 21, 200

For temporary pits, closed-loop systems, and below-grade tanks, submit to the appropriate NMOCD District Office.
For permanent pits and exceptions submit to the Santa Fe Environmental Bureau office and provide a copy to the appropriate NMOCD District Office.
200 24 AM 11 45

Pit, Closed-Loop System, Below-Grade Tank, or
Proposed Alternative Method Permit or Closure Plan Application

Type of action: ☒ Permit of a pit, closed-loop system, below-grade tank, or proposed alternative method
Existing BGT ☐ Closure of a pit, closed-loop system, below-grade tank, or proposed alternative method
Legacy BGT1 ☐ Modification to an existing permit
☐ Closure plan only submitted for an existing permitted or non-permitted pit, closed-loop system, below-grade tank, or proposed alternative method

Instructions: Please submit one application (Form C-144) per individual pit, closed-loop system, below-grade tank or alternative request

Please be advised that approval of this request does not relieve the operator of liability should operations result in pollution of surface water, ground water or the environment. Nor does approval relieve the operator of its responsibility to comply with any other applicable governmental authority's rules, regulations or ordinances

1.
Operator: XTO Energy, Inc. OGRID #: 5380
Address: #382 County Road 3100, Aztec, NM 87410
Facility or well name: BEAVER LODGE COM #4
API Number: 30-045-32064 OCD Permit Number: _____
U/L or Qtr/Qtr F Section 36 Township 31N Range 11W County: San Juan
Center of Proposed Design: Latitude 36.85746 Longitude 107.94418 NAD: ☐ 1927 ☒ 1983
Surface Owner: ☐ Federal ☒ State ☐ Private ☐ Tribal Trust or Indian Allotment

2.
☐ **Pit:** Subsection F or G of 19.15.17.11 NMA
Temporary: ☐ Drilling ☐ Workover
☐ Permanent ☐ Emergency ☐ Cavitation ☐ P&A
☐ Lined ☐ Unlined Liner type: Thickness _____ mil ☐ LLDPE ☐ HDPE ☐ PVC ☐ Other _____
☐ String-Reinforced
Liner Seams: ☐ Welded ☐ Factory ☐ Other _____ Volume: _____ bbl Dimensions: L _____ x W _____ x D _____

3.
☐ **Closed-loop System:** Subsection H of 19.15.17.11 NMAC
Type of Operation: ☐ P&A ☐ Drilling a new well ☐ Workover or Drilling (Applies to activities which require prior approval of a permit or notice of intent)
☐ Drying Pad ☐ Above Ground Steel Tanks ☐ Haul-off Bins ☐ Other _____
☐ Lined ☐ Unlined Liner type: Thickness _____ mil ☐ LLDPE ☐ HDPE ☐ PVC ☐ Other _____
Liner Seams: ☐ Welded ☐ Factory ☐ Other _____

4.
☒ **Below-grade tank:** Subsection I of 19.15.17.11 NMAC
Volume: 120 bbl Type of fluid: Produced Water
Tank Construction material: Steel
☐ Secondary containment with leak detection ☐ Visible sidewalls, liner, 6-inch lift and automatic overflow shut-off
☐ Visible sidewalls and liner ☐ Visible sidewalls only ☒ Other Visible sidewalls, vaulted, automatic high-level shut off, no liner
Liner type: Thickness _____ mil ☐ HDPE ☐ PVC ☐ Other _____

☐ **Alternative Method:**
Submission of an exception request is required. Exceptions must be submitted to the Santa Fe Environmental Bureau office for consideration of approval.

6.

Fencing: Subsection D of 19.15.17.11 NMAC (*Applies to permanent pits, temporary pits, and below-grade tanks*)

- ☐ Chain link, six feet in height, two strands of barbed wire at top (*Required if located within 1000 feet of a permanent residence, school, hospital, institution or church*)
- ☐ Four foot height, four strands of barbed wire evenly spaced between one and four feet
- ☒ Alternate. Please specify Four foot height, steel mesh field fence (hogwire) with pipe top railing

7.

Netting: Subsection E of 19.15.17.11 NMAC (*Applies to permanent pits and permanent open top tanks*)

- ☐ Screen ☐ Netting ☒ Other Expanded metal or solid vaulted top
- ☐ Monthly inspections (If netting or screening is not physically feasible)

8.

Signs: Subsection C of 19.15.17.11 NMAC

- ☐ 12"x 24", 2" lettering, providing Operator's name, site location, and emergency telephone numbers
- ☒ Signed in compliance with 19.15.3.103 NMAC

9.

Administrative Approvals and Exceptions:

Justifications and/or demonstrations of equivalency are required. Please refer to 19.15.17 NMAC for guidance.

Please check a box if one or more of the following is requested, if not leave blank:

- ☐ Administrative approval(s): Requests must be submitted to the appropriate division district or the Santa Fe Environmental Bureau office for consideration of approval.
- ☐ Exception(s): Requests must be submitted to the Santa Fe Environmental Bureau office for consideration of approval.

10.

Siting Criteria (regarding permitting): 19.15.17.10 NMAC

Instructions: The applicant must demonstrate compliance for each siting criteria below in the application. Recommendations of acceptable source material are provided below. Requests regarding changes to certain siting criteria may require administrative approval from the appropriate district office or may be considered an exception which must be submitted to the Santa Fe Environmental Bureau office for consideration of approval. Applicant must attach justification for request. Please refer to 19.15.17.10 NMAC for guidance. Siting criteria does not apply to drying pads or above-grade tanks associated with a closed-loop system.

Ground water is less than 50 feet below the bottom of the temporary pit, permanent pit, or below-grade tank. - NM Office of the State Engineer - iWATERS database search; USGS; Data obtained from nearby wells	<input type="checkbox"/> Yes <input checked="" type="checkbox"/> No
Within 300 feet of a continuously flowing watercourse, or 200 feet of any other significant watercourse or lakebed, sinkhole, or playa lake (measured from the ordinary high-water mark). - Topographic map; Visual inspection (certification) of the proposed site	<input type="checkbox"/> Yes <input checked="" type="checkbox"/> No
Within 300 feet from a permanent residence, school, hospital, institution, or church in existence at the time of initial application. (<i>Applies to temporary, emergency, or cavitation pits and below-grade tanks</i>) - Visual inspection (certification) of the proposed site; Aerial photo; Satellite image	<input type="checkbox"/> Yes <input checked="" type="checkbox"/> No <input type="checkbox"/> NA
Within 1000 feet from a permanent residence, school, hospital, institution, or church in existence at the time of initial application. (<i>Applies to permanent pits</i>) - Visual inspection (certification) of the proposed site; Aerial photo; Satellite image	<input type="checkbox"/> Yes <input type="checkbox"/> No <input checked="" type="checkbox"/> NA
Within 500 horizontal feet of a private, domestic fresh water well or spring that less than five households use for domestic or stock watering purposes, or within 1000 horizontal feet of any other fresh water well or spring, in existence at the time of initial application. - NM Office of the State Engineer - iWATERS database search; Visual inspection (certification) of the proposed site	<input type="checkbox"/> Yes <input checked="" type="checkbox"/> No
Within incorporated municipal boundaries or within a defined municipal fresh water well field covered under a municipal ordinance adopted pursuant to NMSA 1978, Section 3-27-3, as amended. - Written confirmation or verification from the municipality; Written approval obtained from the municipality	<input type="checkbox"/> Yes <input checked="" type="checkbox"/> No
Within 500 feet of a wetland. - US Fish and Wildlife Wetland Identification map; Topographic map; Visual inspection (certification) of the proposed site	<input type="checkbox"/> Yes <input checked="" type="checkbox"/> No
Within the area overlying a subsurface mine. - Written confirmation or verification or map from the NM EMNRD-Mining and Mineral Division	<input type="checkbox"/> Yes <input checked="" type="checkbox"/> No
Within an unstable area. - Engineering measures incorporated into the design; NM Bureau of Geology & Mineral Resources; USGS; NM Geological Society; Topographic map	<input type="checkbox"/> Yes <input checked="" type="checkbox"/> No
Within a 100-year floodplain. - FEMA map	<input type="checkbox"/> Yes <input checked="" type="checkbox"/> No

11.

Temporary Pits, Emergency Pits, and Below-grade Tanks Permit Application Attachment Checklist: Subsection B of 19.15.17.9 NMAC**Instructions:** Each of the following items must be attached to the application. Please indicate, by a check mark in the box, that the documents are attached.

- ☒ Hydrogeologic Report (Below-grade Tanks) - based upon the requirements of Paragraph (4) of Subsection B of 19.15.17.9 NMAC
☐ Hydrogeologic Data (Temporary and Emergency Pits) - based upon the requirements of Paragraph (2) of Subsection B of 19.15.17.9 NMAC
☒ Siting Criteria Compliance Demonstrations - based upon the appropriate requirements of 19.15.17.10 NMAC
☒ Design Plan - based upon the appropriate requirements of 19.15.17.11 NMAC
☒ Operating and Maintenance Plan - based upon the appropriate requirements of 19.15.17.12 NMAC
☒ Closure Plan (Please complete Boxes 14 through 18, if applicable) - based upon the appropriate requirements of Subsection C of 19.15.17.9 NMAC and 19.15.17.13 NMAC
☐ Previously Approved Design (attach copy of design) API Number: _____ or Permit Number: _____

12.

Closed-loop Systems Permit Application Attachment Checklist: Subsection B of 19.15.17.9 NMAC**Instructions:** Each of the following items must be attached to the application. Please indicate, by a check mark in the box, that the documents are attached.

- ☐ Geologic and Hydrogeologic Data (only for on-site closure) - based upon the requirements of Paragraph (3) of Subsection B of 19.15.17.9
☐ Siting Criteria Compliance Demonstrations (only for on-site closure) - based upon the appropriate requirements of 19.15.17.10 NMAC
☐ Design Plan - based upon the appropriate requirements of 19.15.17.11 NMAC
☐ Operating and Maintenance Plan - based upon the appropriate requirements of 19.15.17.12 NMAC
☐ Closure Plan (Please complete Boxes 14 through 18, if applicable) - based upon the appropriate requirements of Subsection C of 19.15.17.9 NMAC and 19.15.17.13 NMAC
☐ Previously Approved Design (attach copy of design) API Number: _____
☐ Previously Approved Operating and Maintenance Plan API Number: _____ (Applies only to closed-loop system that use above ground steel tanks or haul-off bins and propose to implement waste removal for closure)

13.

Permanent Pits Permit Application Checklist: Subsection B of 19.15.17.9 NMAC**Instructions:** Each of the following items must be attached to the application. Please indicate, by a check mark in the box, that the documents are attached.

- ☐ Hydrogeologic Report - based upon the requirements of Paragraph (1) of Subsection B of 19.15.17.9 NMAC
☐ Siting Criteria Compliance Demonstrations - based upon the appropriate requirements of 19.15.17.10 NMAC
☐ Climatological Factors Assessment
☐ Certified Engineering Design Plans - based upon the appropriate requirements of 19.15.17.11 NMAC
☐ Dike Protection and Structural Integrity Design - based upon the appropriate requirements of 19.15.17.11 NMAC
☐ Leak Detection Design - based upon the appropriate requirements of 19.15.17.11 NMAC
☐ Liner Specifications and Compatibility Assessment - based upon the appropriate requirements of 19.15.17.11 NMAC
☐ Quality Control/Quality Assurance Construction and Installation Plan
☐ Operating and Maintenance Plan - based upon the appropriate requirements of 19.15.17.12 NMAC
☐ Freeboard and Overtopping Prevention Plan - based upon the appropriate requirements of 19.15.17.11 NMAC
☐ Nuisance or Hazardous Odors, including H₂S, Prevention Plan
☐ Emergency Response Plan
☐ Oil Field Waste Stream Characterization
☐ Monitoring and Inspection Plan
☐ Erosion Control Plan
☐ Closure Plan - based upon the appropriate requirements of Subsection C of 19.15.17.9 NMAC and 19.15.17.13 NMAC

14.

Proposed Closure: 19.15.17.13 NMAC**Instructions:** Please complete the applicable boxes, Boxes 14 through 18, in regards to the proposed closure plan.
 Type: ☐ Drilling ☐ Workover ☐ Emergency ☐ Cavitation ☐ P&A ☐ Permanent Pit ☒ Below-grade Tank ☐ Closed-loop System
☐ Alternative

 Proposed Closure Method: ☒ Waste Excavation and Removal
☐ Waste Removal (Closed-loop systems only)
☐ On-site Closure Method (Only for temporary pits and closed-loop systems)
☐ In-place Burial ☐ On-site Trench Burial
☐ Alternative Closure Method (Exceptions must be submitted to the Santa Fe Environmental Bureau for consideration)

15.

Waste Excavation and Removal Closure Plan Checklist: (19.15.17.13 NMAC) **Instructions:** Each of the following items must be attached to the closure plan. Please indicate, by a check mark in the box, that the documents are attached.

- ☒ Protocols and Procedures - based upon the appropriate requirements of 19.15.17.13 NMAC
☒ Confirmation Sampling Plan (if applicable) - based upon the appropriate requirements of Subsection F of 19.15.17.13 NMAC
☒ Disposal Facility Name and Permit Number (for liquids, drilling fluids and drill cuttings)
☒ Soil Backfill and Cover Design Specifications - based upon the appropriate requirements of Subsection H of 19.15.17.13 NMAC
☒ Re-vegetation Plan - based upon the appropriate requirements of Subsection I of 19.15.17.13 NMAC
☒ Site Reclamation Plan - based upon the appropriate requirements of Subsection G of 19.15.17.13 NMAC

16.

Waste Removal Closure For Closed-loop Systems That Utilize Above Ground Steel Tanks or Haul-off Bins Only: (19.15.17.13.D NMAC)

Instructions: Please indentify the facility or facilities for the disposal of liquids, drilling fluids and drill cuttings. Use attachment if more than two facilities are required.

Disposal Facility Name: _____ Disposal Facility Permit Number: _____

Disposal Facility Name: _____ Disposal Facility Permit Number: _____

Will any of the proposed closed-loop system operations and associated activities occur on or in areas that *will not* be used for future service and operations?☐ Yes (If yes, please provide the information below) ☐ No**Required for impacted areas which will not be used for future service and operations:**☐ Soil Backfill and Cover Design Specifications - based upon the appropriate requirements of Subsection H of 19.15.17.13 NMAC☐ Re-vegetation Plan - based upon the appropriate requirements of Subsection I of 19.15.17.13 NMAC☐ Site Reclamation Plan - based upon the appropriate requirements of Subsection G of 19.15.17.13 NMAC

17.

Siting Criteria (regarding on-site closure methods only): 19.15.17.10 NMAC

Instructions: Each siting criteria requires a demonstration of compliance in the closure plan. Recommendations of acceptable source material are provided below. Requests regarding changes to certain siting criteria may require administrative approval from the appropriate district office or may be considered an exception which must be submitted to the Santa Fe Environmental Bureau office for consideration of approval. Justifications and/or demonstrations of equivalency are required. Please refer to 19.15.17.10 NMAC for guidance.

Ground water is less than 50 feet below the bottom of the buried waste.

- NM Office of the State Engineer - iWATERS database search; USGS; Data obtained from nearby wells

☐ Yes ☐ No
☐ NA

Ground water is between 50 and 100 feet below the bottom of the buried waste

- NM Office of the State Engineer - iWATERS database search; USGS; Data obtained from nearby wells

☐ Yes ☐ No
☐ NA

Ground water is more than 100 feet below the bottom of the buried waste.

- NM Office of the State Engineer - iWATERS database search; USGS; Data obtained from nearby wells

☐ Yes ☐ No
☐ NA

Within 300 feet of a continuously flowing watercourse, or 200 feet of any other significant watercourse or lakebed, sinkhole, or playa lake (measured from the ordinary high-water mark).

- Topographic map; Visual inspection (certification) of the proposed site

☐ Yes ☐ No

Within 300 feet from a permanent residence, school, hospital, institution, or church in existence at the time of initial application.

- Visual inspection (certification) of the proposed site; Aerial photo; Satellite image

☐ Yes ☐ No

Within 500 horizontal feet of a private, domestic fresh water well or spring that less than five households use for domestic or stock watering purposes, or within 1000 horizontal feet of any other fresh water well or spring, in existence at the time of initial application.

- NM Office of the State Engineer - iWATERS database; Visual inspection (certification) of the proposed site

☐ Yes ☐ No

Within incorporated municipal boundaries or within a defined municipal fresh water well field covered under a municipal ordinance adopted pursuant to NMSA 1978, Section 3-27-3, as amended.

- Written confirmation or verification from the municipality; Written approval obtained from the municipality

☐ Yes ☐ No

Within 500 feet of a wetland.

- US Fish and Wildlife Wetland Identification map; Topographic map; Visual inspection (certification) of the proposed site

☐ Yes ☐ No

Within the area overlying a subsurface mine.

- Written confirmation or verification or map from the NM EMNRD-Mining and Mineral Division

☐ Yes ☐ No

Within an unstable area.

- Engineering measures incorporated into the design; NM Bureau of Geology & Mineral Resources; USGS; NM Geological Society; Topographic map

☐ Yes ☐ No

Within a 100-year floodplain.

- FEMA map

☐ Yes ☐ No

18.

On-Site Closure Plan Checklist: (19.15.17.13 NMAC) **Instructions:** Each of the following items must be attached to the closure plan. Please indicate, by a check mark in the box, that the documents are attached.

- ☐ Siting Criteria Compliance Demonstrations - based upon the appropriate requirements of 19.15.17.10 NMAC
- ☐ Proof of Surface Owner Notice - based upon the appropriate requirements of Subsection F of 19.15.17.13 NMAC
- ☐ Construction/Design Plan of Burial Trench (if applicable) based upon the appropriate requirements of 19.15.17.11 NMAC
- ☐ Construction/Design Plan of Temporary Pit (for in-place burial of a drying pad) - based upon the appropriate requirements of 19.15.17.11 NMAC
- ☐ Protocols and Procedures - based upon the appropriate requirements of 19.15.17.13 NMAC
- ☐ Confirmation Sampling Plan (if applicable) - based upon the appropriate requirements of Subsection F of 19.15.17.13 NMAC
- ☐ Waste Material Sampling Plan - based upon the appropriate requirements of Subsection F of 19.15.17.13 NMAC
- ☐ Disposal Facility Name and Permit Number (for liquids, drilling fluids and drill cuttings or in case on-site closure standards cannot be achieved)
- ☐ Soil Cover Design - based upon the appropriate requirements of Subsection H of 19.15.17.13 NMAC
- ☐ Re-vegetation Plan - based upon the appropriate requirements of Subsection I of 19.15.17.13 NMAC
- ☐ Site Reclamation Plan - based upon the appropriate requirements of Subsection G of 19.15.17.13 NMAC

19. **Operator Application Certification:**

I hereby certify that the information submitted with this application is true, accurate and complete to the best of my knowledge and belief.

Name (Print): Kim Champlin Title: Environmental Representative
Signature: Kim Champlin Date: 11-21-08
e-mail address: kim_champlin@xtoenergy.com Telephone: (505) 333-3100

20. **OCD Approval:** ☒ Permit Application (including closure plan) ☐ Closure Plan (only) ☐ OCD Conditions (see attachment)

OCD Representative Signature: Shelly Wells Approval Date: 08/10/2022
Title: Environmental Specialist-A OCD Permit Number: Legacy BGT1

21. **Closure Report (required within 60 days of closure completion):** Subsection K of 19.15.17.13 NMAC

Instructions: Operators are required to obtain an approved closure plan prior to implementing any closure activities and submitting the closure report. The closure report is required to be submitted to the division within 60 days of the completion of the closure activities. Please do not complete this section of the form until an approved closure plan has been obtained and the closure activities have been completed.

☐ Closure Completion Date: _____

22. **Closure Method:**

☐ Waste Excavation and Removal ☐ On-Site Closure Method ☐ Alternative Closure Method ☐ Waste Removal (Closed-loop systems only)
☐ If different from approved plan, please explain.

23. **Closure Report Regarding Waste Removal Closure For Closed-loop Systems That Utilize Above Ground Steel Tanks or Haul-off Bins Only:**

Instructions: Please identify the facility or facilities for where the liquids, drilling fluids and drill cuttings were disposed. Use attachment if more than two facilities were utilized.

Disposal Facility Name: _____ Disposal Facility Permit Number: _____
Disposal Facility Name: _____ Disposal Facility Permit Number: _____

Were the closed-loop system operations and associated activities performed on or in areas that will not be used for future service and operations?

☐ Yes (If yes, please demonstrate compliance to the items below) ☐ No

Required for impacted areas which will not be used for future service and operations:

- ☐ Site Reclamation (Photo Documentation)
☐ Soil Backfilling and Cover Installation
☐ Re-vegetation Application Rates and Seeding Technique

24. **Closure Report Attachment Checklist:** Instructions: Each of the following items must be attached to the closure report. Please indicate, by a check mark in the box, that the documents are attached.

- ☐ Proof of Closure Notice (surface owner and division)
☐ Proof of Deed Notice (required for on-site closure)
☐ Plot Plan (for on-site closures and temporary pits)
☐ Confirmation Sampling Analytical Results (if applicable)
☐ Waste Material Sampling Analytical Results (required for on-site closure)
☐ Disposal Facility Name and Permit Number
☐ Soil Backfilling and Cover Installation
☐ Re-vegetation Application Rates and Seeding Technique
☐ Site Reclamation (Photo Documentation)

On-site Closure Location: Latitude _____ Longitude _____ NAD: ☐ 1927 ☐ 1983

25. **Operator Closure Certification:**

I hereby certify that the information and attachments submitted with this closure report is true, accurate and complete to the best of my knowledge and belief. I also certify that the closure complies with all applicable closure requirements and conditions specified in the approved closure plan.

Name (Print): _____ Title: _____
Signature: _____ Date: _____
e-mail address: _____ Telephone: _____

DISTRICT I
P.O. Box 1980, Hobbs, N.M. 88241-1980

DISTRICT II
P.O. Drawer DD, Artesia, N.M. 88211-0719

DISTRICT III
1000 Rio Brazos Rd., Aztec, N.M. 87410

DISTRICT IV
PO Box 2088, Santa Fe, NM 87504-2088

State of New Mexico
Energy, Minerals & Natural Resources Department

OIL CONSERVATION DIVISION

P.O. Box 2088
Santa Fe, NM 87504-2088

REC'D / SAN JUAN

AUG 29 2003

Form C-102
Revised February 21, 1994
Instructions on back
Submit to Appropriate District Office
State Lease - 4 Copies
Fee Lease - 3 Copies

☐ AMENDED REPORT

WELL LOCATION AND ACREAGE DEDICATION PLAT

1 API Number		2 Pool Code		3 Pool Name	
4 Property Code		5 Property Name BEAVER LODGE COM			6 Well Number 4
7 GRID No.		8 Operator Name XTO ENERGY INC.			9 Elevation 5915

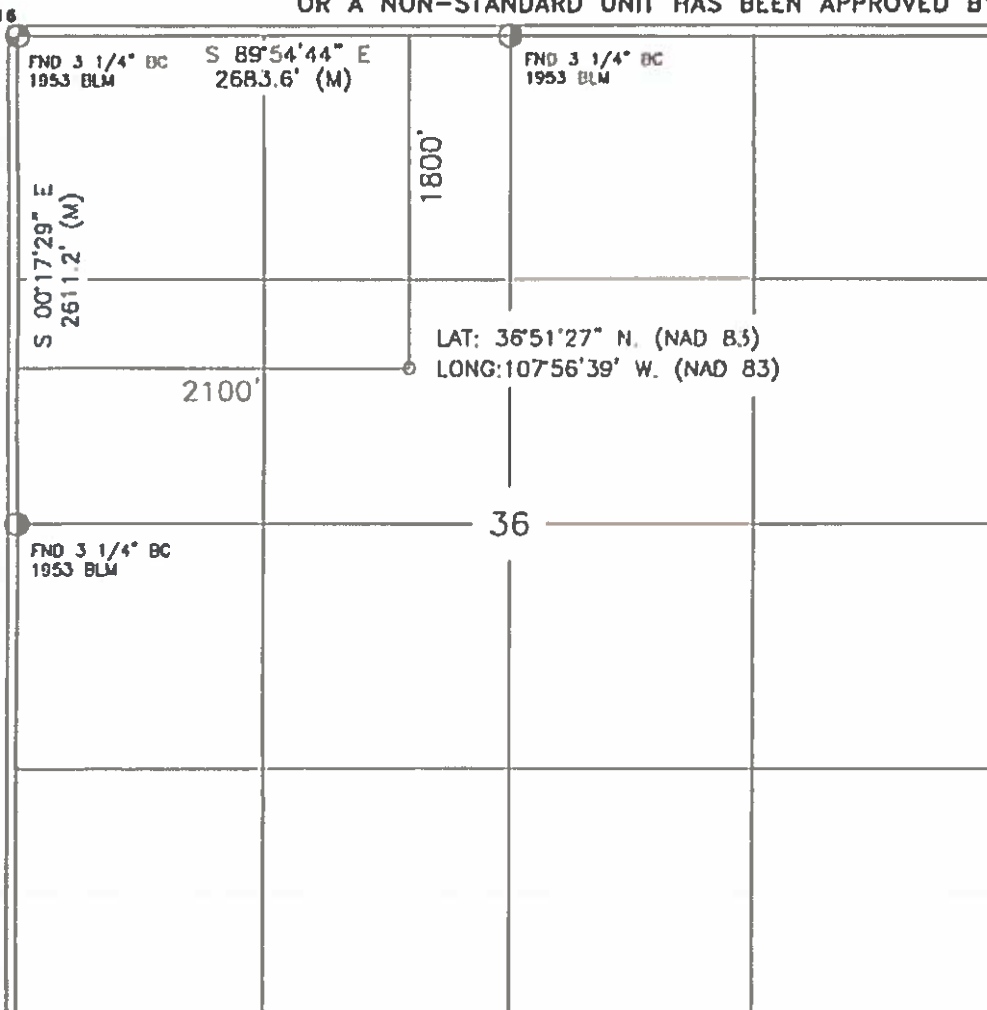
10 Surface Location

UL or lot no.	Section	Township	Range	Lot Idn	Feet from the	North/South line	Feet from the	East/West line	County
F	38	31-N	11-W		1800	NORTH	2100	WEST	SAN JUAN

11 Bottom Hole Location If Different From Surface

UL or lot no.	Section	Township	Range	Lot Idn	Feet from the	North/South line	Feet from the	East/West line	County
12 Dedicated Acres					13 Joint or Int'l		14 Consolidation Code		15 Order No.

NO ALLOWABLE WILL BE ASSIGNED TO THIS COMPLETION UNTIL ALL INTERESTS HAVE BEEN CONSOLIDATED
OR A NON-STANDARD UNIT HAS BEEN APPROVED BY THE DIVISION



17 OPERATOR CERTIFICATION

I hereby certify that the information contained herein is true and complete to the best of my knowledge and belief

Signature _____
Printed Name _____
Title _____
Date _____

18 SURVEYOR CERTIFICATION

I hereby certify that the well location shown on this plat was plotted from field notes of actual surveys made by me or under my supervision, and that the same is true and correct to the best of my belief.

8-27-03

Date of Survey _____
Signature and Seal of Surveyor:
Certificate Number _____


Lodestar Services, Inc.

PO Box 4465, Durango, CO 81302

Pit Permit Siting Criteria Information Sheet

Client:	XTO Energy
Project:	Pit Permits
Revised:	28-Oct-08
Prepared by:	Brooke Herb

API#: 3004532064

USPLSS: T31N,R11W,S36F

Name: BEAVER LODGE COM #4

Lat/Long: 36.85746, -107.94418

Depth to groundwater: > 100'

Geologic formation: Nacimiento Formation

Distance to closest continuously flowing watercourse: 1.46 miles E of the Animas River

Distance to closest significant watercourse, lakebed, playa lake, or sinkhole: 917' S of Jones Arroyo; 1313' N of Knowlton Canyon Wash; 4975' W of Thurston Spring; 3602' E of Irrigation Ditch

Permanent residence, school, hospital, institution or church within 300' No

Soil Type: Entisols

Domestic fresh water well or spring within 500' No

Annual Precipitation: 9.77 inches (Aztec)

Any other fresh water well or spring within 1000' No

Precipitation Notes: no significant precip events

Within incorporated municipal boundaries No

Within defined municipal fresh water well field No

Attached Documents: Groundwater report and Data; FEMA Flood Zone Map
Aerial Photo, Topo Map, Mines Mills and Quarries Map

Wetland within 500' No

Mining Activity: 1.22 miles N of Materials Pit

Within unstable area No

Within 100 year flood plain No- FEMA Flood Zone 'X'

Additional Notes:

BEAVER LODGE COM #4 Below Ground Tank Siting Criteria and Closure Plan

Well Site Location

Legals: T31N, R11W, Section 36, Quarter Section F

Latitude/Longitude: approximately 36.85746, -107.94418

County: San Juan County, NM

General Description: near Aztec

General Geology and Hydrology

The San Juan Basin is a typical Rocky Mountain basin with a gently dipping southern flank and a steeply dipping northern flank. Asymmetrically layered Tertiary sandstones and shales, along with Quaternary alluvial deposits dominate surficial geology (Dane and Bachman, 1965). The proposed below ground tank location will be located near Hart Canyon just east of the Animas River. The Nacimiento Formation of Tertiary Age is exposed, along with Quaternary alluvial and aeolian sands within dry washes and arroyos.

Cretaceous and Tertiary sandstones, as well as Quaternary alluvial deposits serve as the primary aquifers in the San Juan basin (Stone et al., 1983). In most of the proposed area, the Nacimiento Formation lies at the surface. Thickness of the Nacimiento ranges from 418 to 2232 feet (Stone et al., 1983). Aquifers within the coarser and continuous sandstone bodies of the Nacimiento Formation are between 0 and 1000' deep in this section of the basin (Stone et al., 1983). Groundwater within these aquifers flows toward the nearby San Juan River and its tributaries.

The prominent soil type at the proposed site is entisols, which are defined as soils that do not show any profile development. Soils are basically unaltered from their parent rock. Miles of arroyos, washes and intermittent streams exist as part of the drainage network towards the La Plata River (www.emnrd.state.nm.us). These features often cut into soil and other unconsolidated materials, contributing to sedimentation downstream. The sudden influx of water from storm events easily erodes soils that cover the area.

The climate of the region is arid, averaging just over 8 inches of rainfall annually. As is typical of the southwestern United States monsoonal weather patterns, most precipitation falls from August through October. The heaviest rainfall occurs in the summer in isolated, intense cloudbursts. November through June is relatively dry. Snow generally falls from December to mid-February and averages less than one-half inch in depth. However, most recharge occurs during the winter months during snowmelt periods from the upper elevations (Western Regional Climate Center www.wrcc.dri.edu).

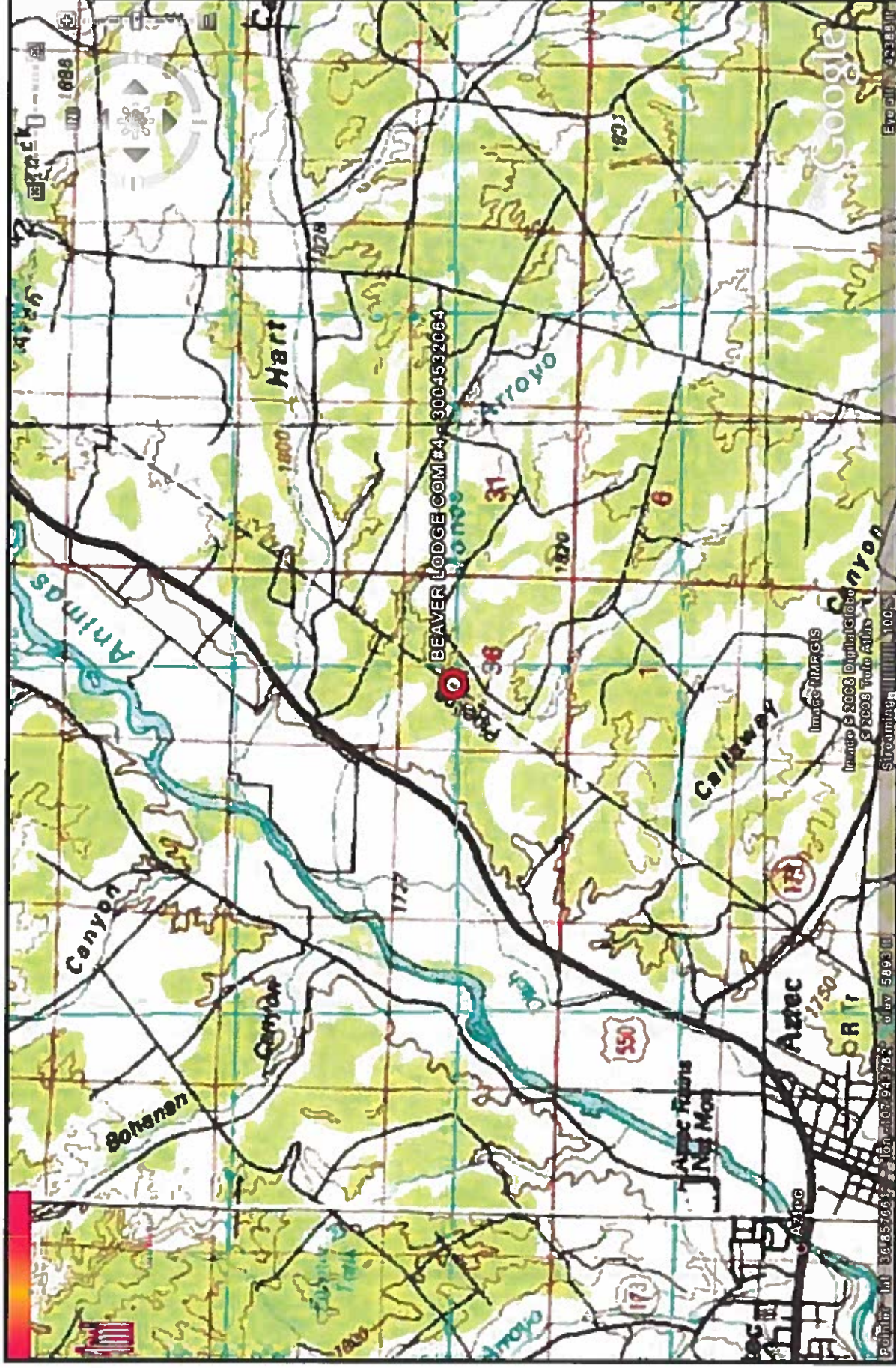
The predominant vegetation is sagebrush and grasses with a more restricted pinon-juniper association (Dick-Peddie, 1993).

Site Specific Hydrogeology

Depth to groundwater is estimated to be greater than 100 feet. This estimation is based on data from Stone and others, 1983 and depth to groundwater data published on the New Mexico State Engineer's iWaters Database website. Local topography and proximity to surface hydrologic features are also taken into consideration.

Local aquifers include sandstones within the Nacimiento Formation, which ranges from 0 to 1000 feet deep in this area, as well as shallow aquifers within Quaternary alluvial deposits (Stone et al., 1983). The 1000-foot depth range for Nacimiento aquifers covers an area over 20 miles wide, and depth decreases towards the margin of the San Juan Basin. The site in question is more centrally located, and depth to the aquifer is expected to be closer to 1000 feet. It is well known that groundwater close to the Animas River can be shallow, as the Quaternary deposits near the river itself form shallow aquifers. However, the proposed site is situated over a mile to the east of the Animas River, and is approximately 245 feet higher in elevation (Google Earth).

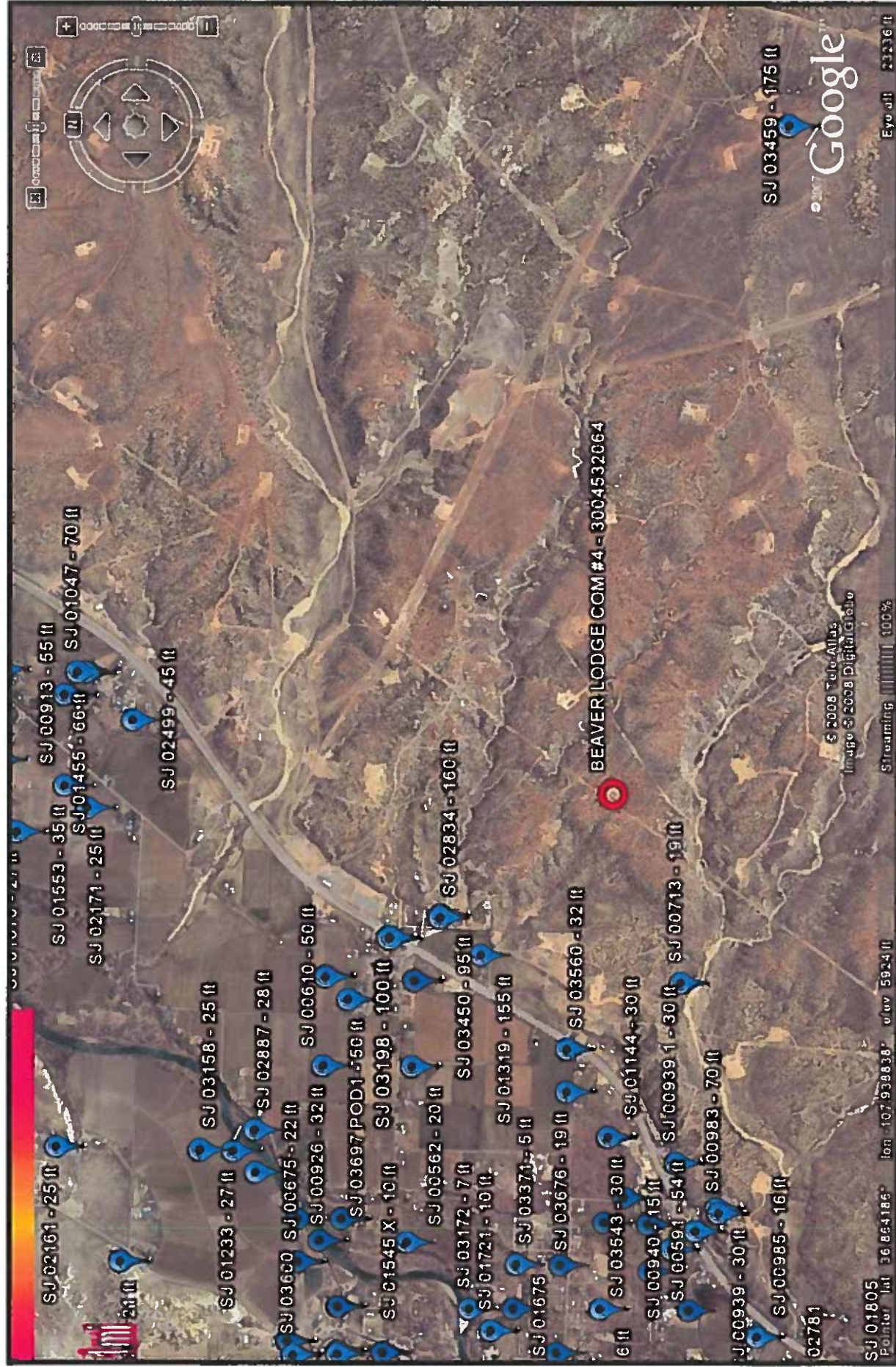
Groundwater data available from the NM State Engineer's iWaters Database for wells near the proposed site are attached. A map showing the location of wells in reference to the proposed pit location is also included. Pinpoints show locations of wells and the labels for each pinpoint indicate depth to groundwater in feet. Wells are clustered to the west along the Animas River. Depth to groundwater within the nearby wells ranges from 6 feet to 175 feet below ground surface. The closest well to the proposed site is located approximately 2761 feet to the northwest, and is approximately 115 feet lower in topographic elevation (Google Earth). Depth to groundwater within the well is 95 feet below ground surface. A well to the southwest is approximately 90 feet lower in elevation than the proposed site, and has a depth to groundwater of 19 feet below ground surface. A well to the west is approximately 160 feet lower in elevation than the proposed site, and has a depth to groundwater of 32 feet below ground surface.



Lodestar Services, Inc
PO Box 4465
Durango, CO 81302

BEAVER LODGE COM #4
T31N, R11W, S36F
San Juan County, NM

Topographic Map



Lodestar Services, Inc PO Box 4465 Durango, CO 81302	BEAVER LODGE COM #4 T31N, R11W, S36F San Juan County, NM	iWaters Groundwater Data Map
-------------------------------------------------------------------	-----------------------------------------------------------------------	----------------------------------------

New Mexico Office of the State Engineer
POD Reports and Downloads

Township: 31N Range: 11W Sections:

WATER COLUMN REPORT 10/27/2008

(quarters are 1=NW 2=NE 3=SW 4=SE)

(quarters are biggest to smallest)

POD Number	Twp	Rng	Sec	q	q	q	Zone	X	Y	Depth Well	Depth Water	Water Column	Water (in feet)
SJ 02395	31N	11W	13	1	1	3				33	33	60	
SJ 01640	31N	11W	13	2	4					32	7	25	
SJ 01551	31N	11W	13	2	4					33	40	22	
SJ 00560	31N	11W	13	2	4					33	23	14	
SJ 01729	31N	11W	13	2	4					43	23	20	
SJ 01541	31N	11W	13	3						32	30	22	
SJ 01539	31N	11W	13	3						32	30	22	
SJ 00946	31N	11W	13	3	3					133	100	33	
SJ 01540	31N	11W	13	4						32	30	22	
SJ 01879	31N	11W	13	4						23	3	13	
SJ 01801	31N	11W	13	4						22	13	7	
SJ 03413	31N	11W	13	4						30			
SJ 03412	31N	11W	13	4						30			
SJ 03736 POD1	31N	11W	13	4						13			
SJ 02495	31N	11W	13	4						23	10	12	
SJ 03623	31N	11W	13	4						33	13	14	
SJ 03264	31N	11W	13	4						20	11	3	
SJ 03124	31N	11W	13	4						20	3	13	
SJ 03125	31N	11W	13	4						20	3	13	
SJ 03712 POD1	31N	11W	13	4						13	11	3	
SJ 03018	31N	11W	13	4	4					20	3	12	
SJ 03670	31N	11W	13	4	4					23	10	13	
SJ 01538	31N	11W	13	4	4					33	30	22	
SJ 01683	31N	11W	13	4	4					43	23	20	
SJ 01731	31N	11W	13	4	4					43	23	13	
SJ 01644	31N	11W	13	4	4					23	3	17	
SJ 02149	31N	11W	13	4	4					33			

SJ 02884	31N	10W	05	2	4	4	75					
SJ 00304	31N	10W	05	3	4	4	18	5			13	
SJ 02399	31N	10W	05	3	4	1	40	14			26	
SJ 02944	31N	10W	05	3	4	2	100					
SJ 03112	31N	10W	05	3	4	2	45	33			12	
SJ 01373 X	31N	10W	05	3	4	3	35	10			25	
SJ 02107	31N	10W	05	4	3		35	16			19	
SJ 01373	31N	10W	05	4	3		6	3			3	
SJ 02037	31N	10W	05	4	3		39	11			28	
SJ 03452	31N	10W	05	4	4	2	61	30			31	
SJ 03336	31N	10W	05	4	4	3	58	28			30	
SJ 03246	31N	10W	05	4	4	3	65	15			50	
SJ 01958	31N	10W	06	2			103	93			20	
SJ 01977	31N	10W	06	2	3		93	33			60	
SJ 03308	31N	10W	06	2	4	3	100	60			40	
SJ 02150	31N	10W	07	2	2		41	23			18	
SJ 02389	31N	10W	07	2	2	3	48	31			17	
SJ 03079	31N	10W	07	2	2	3	50					
SJ 03330	31N	10W	07	3	3	1	400					
SJ 01521	31N	10W	07	4			45	29			16	
SJ 03802 PDD1	31N	10W	07	4	3	2	41	24			17	
SJ 00585	31N	10W	08				40	23			17	
SJ 02304	31N	10W	08	1	2		35	29			6	
SJ 03057	31N	10W	08	1	3	4	19	6			13	
SJ 03714 PDD1	31N	10W	08	3	1	1	21	6			15	
SJ 00054	31N	10W	10	2			455					
SJ 00830 -EXPLOR	31N	10W	15	3			550					
SJ 01198	31N	10W	17	3	4		158	97			61	
SJ 02624	31N	10W	18	1	1		295	125			170	
SJ 01616	31N	10W	18	1	3		18	8			10	
SJ 01534	31N	10W	18	1	3	1	34	23			11	
SJ 03345	31N	10W	18	1	3	2	21	11			10	
SJ 01796	31N	10W	18	1	3	3	32	20			12	
SJ 01598	31N	10W	18	1	4		30	5			25	
SJ 01587	31N	10W	18	1	4		35	5			30	
SJ 03163	31N	10W	18	1	4	3	19	5			14	
SJ 01747	31N	10W	18	1	4	3	20	6			14	
SJ 01718	31N	10W	18	2	1	4	30	4			26	
SJ 03813 PDD1	31N	10W	18	2	1	4	16	6			10	
SJ 03070	31N	10W	18	2	3	2	21	1			20	

265793 2145984

265778 2148065

SJ 03324	31N	10W 18	2 3 2	43	20	23
SJ 03474	31N	10W 18	2 4 2	35		
SJ 01625	31N	10W 18	3 1	21	6	15
SJ 01500	31N	10W 18	3 1	26	15	11
SJ 01550	31N	10W 18	3 1	22	7	15
SJ 02821	31N	10W 18	3 1 1	24	8	16
SJ 03119	31N	10W 18	3 1 2	10	8	2
SJ 01552	31N	10W 18	3 1 4	30	22	8
SJ 03114	31N	10W 18	3 2 1	16	8	8
SJ 02749	31N	10W 18	3 2 2	16	10	6
SJ 03722 POD1	31N	10W 18	3 2 3	20	6	14
SJ 03721 POD1	31N	10W 18	3 2 3	25	10	15
SJ 03435	31N	10W 18	3 2 3	10	6	4
SJ 03622	31N	10W 18	3 2 3	20	6	14
SJ 00611 S	31N	10W 18	3 3	65	25	40
SJ 00611	31N	10W 18	3 3	58	46	12
SJ 00555 CLH225581	31N	10W 19	1	70	45	25
SJ 02909	31N	10W 19	1 1 1	60	47	13
SJ 02929	31N	10W 19	1 1 1	58	40	18
SJ 02979	31N	10W 19	1 1 1	57	43	14
SJ 03103	31N	10W 19	1 1 1	53	33	20
SJ 03359	31N	10W 19	1 1 1	70		
SJ 03705 POD1	31N	10W 19	1 1 2	65	56	13
SJ 03487	31N	10W 19	1 1 3	65	45	20
SJ 03086	31N	10W 19	1 1 3	61	44	17
SJ 03486	31N	10W 19	1 1 3	65	45	20
SJ 01428	31N	10W 19	1 3	65	45	20
SJ 01349	31N	10W 19	1 3 3	78	67	11
SJ 03285	31N	10W 19	3 1 1	40		
SJ 02084	31N	10W 25	4 4 2	315		
SJ 00967	31N	10W 27	4 3	130	90	40
SJ 00990	31N	10W 27	4 3	162	110	52
SJ 01483	31N	10W 27	4 4 1	195	150	45
SJ 02960	31N	10W 27	4 4 2	200	150	50
SJ 03178	31N	10W 27	4 4 2	235	150	35
SJ 03539	31N	10W 27	4 4 3	205	124	31
SJ 00163	31N	10W 28	1 4 1	1538		
SJ 00163 EXPL	31N	10W 28	1 4 3	1538		
SJ 03459	31N	10W 32	3 3 2	165	175	10
SJ 00981	31N	10W 34	2 1	164	116	46

SJ 01480	31N	10W	34	2	1	245	125	120
SJ 03624	31N	10W	34	2	1	165	65	100
SJ 03387	31N	10W	34	2	1	250	200	50
SJ 03728 POD1	31N	10W	35	1	3	365	230	135
SJ 03545	31N	10W	35	1	3	455	317	138
SJ 03544	31N	10W	35	1	4	325	220	105
SJ 03571	31N	10W	35	1	4	250		
SJ 03576	31N	10W	35	2	3	450	137	313
SJ 03570	31N	10W	35	2	4	250		
SJ 03554	31N	10W	35	4	2	454	317	137

Record Count: 117

New Mexico Office of the State Engineer
POD Reports and Downloads

Township: 3rd Range: 11W Sections: 1

WATER COLUMN REPORT 10/27/2008

(quarters are 1=NW 2=NE 3=SW 4=SE)
 (quarters are biggest to smallest)

POD Number	Tws	Rng	Sec	q	q	q	Zone	X	Y	Depth Well	Depth Water	Water Column	Depth (in feet)
SJ 02395	31N	11W	13	1	1	3				95	35	60	25
SJ 01640	31N	11W	13	2	4					32	7	25	42
SJ 01551	31N	11W	13	2	4					64	42	22	14
SJ 00560	31N	11W	13	2	4					39	25	14	20
SJ 01729	31N	11W	13	2	4					48	28	20	22
SJ 01541	31N	11W	13	3						52	30	22	30
SJ 01539	31N	11W	13	3						52	30	22	35
SJ 00946	31N	11W	13	3	3					135	100	35	22
SJ 01540	31N	11W	13	4						52	30	22	18
SJ 01879	31N	11W	13	4						26	8	18	7
SJ 01801	31N	11W	13	4						22	15		
SJ 03413	31N	11W	13	4	2					60			
SJ 03412	31N	11W	13	4	2					60			
SJ 03736 POD1	31N	11W	13	4	2	1				19	6	13	16
SJ 02495	31N	11W	13	4	2	1				28	12	16	14
SJ 03623	31N	11W	13	4	2	1				30	16	14	5
SJ 03264	31N	11W	13	4	2	2				20	11	5	15
SJ 03124	31N	11W	13	4	2	4				20	5	15	15
SJ 03125	31N	11W	13	4	2	4				20	5	15	12
SJ 03712 POD1	31N	11W	13	4	3	1				19	11	8	10
SJ 03018	31N	11W	13	4	3	4				20	8	12	16
SJ 03670	31N	11W	13	4	3	4				26	10	16	22
SJ 01538	31N	11W	13	4	4					52	30	20	18
SJ 01683	31N	11W	13	4	4					45	25	20	17
SJ 01731	31N	11W	13	4	4					43	25	18	6
SJ 01644	31N	11W	13	4	4					23	6		
SJ 02149	31N	11W	13	4	4					35			

SJ 01645	31N	11W	13	4	4	22	6	16
SJ 01767	31N	11W	13	4	4	42	18	24
SJ 01730	31N	11W	13	4	4	40	24	16
SJ 01699	31N	11W	13	4	4	42	12	30
SJ 01609	31N	11W	13	4	4	40	18	22
SJ 01537	31N	11W	13	4	4	52	28	24
SJ 01542	31N	11W	13	4	4			
SJ 01663	31N	11W	13	4	4	45	25	20
SJ 02093	31N	11W	13	4	4	40	20	20
SJ 03440	31N	11W	13	4	4	20	6	14
SJ 03084	31N	11W	13	4	4	19	11	8
SJ 03085	31N	11W	13	4	4	18	8	10
SJ 02801	31N	11W	13	4	4	36	5	31
SJ 03064	31N	11W	13	4	4	45		
SJ 01142	31N	11W	13	4	4	30	8	22
SJ 02838	31N	11W	13	4	4	39	10	28
SJ 02855	31N	11W	13	4	4	31		
SJ 01173	31N	11W	13	4	4	46	28	18
SJ 02289	31N	11W	13	4	4	45	16	25
SJ 03458	31N	11W	19	3	4	140		
SJ 02978	31N	11W	23	2	1	900		
SJ 01817	31N	11W	23	2	4	65	20	45
SJ 02129	31N	11W	23	2	4	72	35	37
SJ 02161	31N	11W	23	3	4	40	25	15
SJ 01600	31N	11W	24	1		30	6	24
SJ 02124	31N	11W	24	1	1	55	40	15
SJ 03755 P001	31N	11W	24	1	4	27	7	20
SJ 03695 P001	31N	11W	24	1	4	25	13	12
SJ 03695 P00	31N	11W	24	1	4	25	13	12
SJ 03696	31N	11W	24	1	4	24	12	12
SJ 03695	31N	11W	24	1	4	25	13	12
SJ 03696 P001	31N	11W	24	1	4	24	12	12
SJ 01559	31N	11W	24	2		50	27	23
SJ 01744	31N	11W	24	2	2	44	20	24
SJ 01375	31N	11W	24	2	2	30	11	19
SJ 01986 S	31N	11W	24	2	2	45	30	15
SJ 01986	31N	11W	24	2	2	39	21	17
SJ 00555	31N	11W	24	2	4	60	19	41
SJ 03408	31N	11W	24	2	3	26	11	15
SJ 02928	31N	11W	24	2	3	70		

W 470730 2143800

269112 2142037

SJ 02924	31N	11W	24	2	3	2	33	15	18
SJ 02846	31N	11W	24	2	3	3	45	18	27
SJ 02898	31N	11W	24	2	3	3	65		
SJ 03650	31N	11W	24	2	3	3	32	15	17
SJ 00555 X	31N	11W	24	2	4		58	39	19
SJ 02839	31N	11W	24	2	4	1	55	19	36
SJ 03707 PDD1	31N	11W	24	2	4	1	60	40	20
SJ 02758	31N	11W	24	2	4	2	69	51	18
SJ 02791	31N	11W	24	2	4	2	74	54	20
SJ 00379	31N	11W	24	2	4	4	65	40	25
SJ 00365	31N	11W	24	2	4	4	71	40	31
SJ 01670	31N	11W	24	3			45	27	18
SJ 00287	31N	11W	24	3	2	4	38	6	32
SJ 01553	31N	11W	24	3	4		44	35	9
SJ 02171	31N	11W	24	3	4	3	45	25	20
SJ 01366	31N	11W	24	4	1		30	11	19
SJ 02644	31N	11W	24	4	1	4	45	18	27
SJ 00913	31N	11W	24	4	3		81	55	26
SJ 01405	31N	11W	24	4	3		30	9	21
SJ 01455	31N	11W	24	4	3	4	101	66	35
SJ 01047	31N	11W	24	4	3	4	205	70	135
SJ 00405	31N	11W	24	4	3	4	69	42	27
SJ 03438	31N	11W	24	4	4		40		
SJ 03045	31N	11W	25	1	4	4	200		
SJ 02499	31N	11W	25	2	1	1	66	45	21
SJ 03198	31N	11W	25	3	3	1	600	100	500
SJ 02834	31N	11W	25	3	3	3	200	160	40
SJ 03450	31N	11W	25	3	3	3	144	95	49
SJ 03126	31N	11W	26	1	1	1	41	21	20
SJ 01233	31N	11W	26	1	4		49	27	22
SJ 03158	31N	11W	26	1	4	2	280	25	255
SJ 00675	31N	11W	26	1	4	3	36	22	14
SJ 02887	31N	11W	26	2	1	4	51	28	23
SJ 02898	31N	11W	26	3	1		50		
SJ 01789	31N	11W	26	3	1		29	12	17
SJ 00705	31N	11W	26	3	1	1	18	8	10
SJ 00371	31N	11W	26	3	1	2	29	9	20
SJ 03323	31N	11W	26	3	1	4	30	6	24
SJ 00363	31N	11W	26	3	1	4	25	5	20
SJ 01545 X	31N	11W	26	3	3		27	10	17

SJ 00926	31N	11W	26	4	1	€2	32	30
SJ 01519	31N	11W	26	4	2	€9	47	22
SJ 01620	31N	11W	26	4	2	€7	26	41
SJ 00610	31N	11W	26	4	2	€0	50	30
SJ 02011	31N	11W	26	4	2	€5	38	17
SJ 01628	31N	11W	26	4	2	€6	25	41
SJ 03697 POD1	31N	11W	26	4	2	€0	50	30
SJ 00562	31N	11W	26	4	3	€0	20	20
SJ 00561	31N	11W	26	4	3	€8	20	18
SJ 01042	31N	11W	26	4	4	100	30	70
SJ 00494	31N	11W	26	4	4	€8	60	28
SJ 02482	31N	11W	27	4	1	75	55	20
SJ 03600	31N	11W	27	4	2	€1	39	12
SJ 03540	31N	11W	27	4	2	€0	21	19
SJ 03772 POD1	31N	11W	27	4	2	41	30	11
SJ 02914	31N	11W	27	4	2	25	15	10
SJ 02468	31N	11W	27	4	2	49	30	19
SJ 02656	31N	11W	27	4	2	21	9	12
SJ 02871	31N	11W	27	4	2	22	11	11
SJ 02215	31N	11W	27	4	3	€4	23	31
SJ 02676	31N	11W	27	4	3	19	7	12
SJ 03247	31N	11W	27	4	3	70		
SJ 03505	31N	11W	27	4	3	€0	14	36
SJ 02549	31N	11W	27	4	3	49	30	15
SJ 02853	31N	11W	27	4	3	22	6	16
SJ 02984	31N	11W	27	4	4	20		
SJ 03181	31N	11W	27	4	4	19	10	9
SJ 01884	31N	11W	30	4	2	71	30	41
SJ 01739	31N	11W	30	4	2	€8	30	68
SJ 01154	31N	11W	30	4	2	190	150	40
SJ 01834	31N	11W	30	4	2	103	30	73
SJ 01797	31N	11W	30	4	4	100	40	60
SJ 01396	31N	11W	30	4	4	€0	57	23
SJ 00970	31N	11W	30	4	4	110	80	30
SJ 01811	31N	11W	31	2	2	€9	50	39
SJ 02994	31N	11W	33	4	3	300	200	100
SJ 02993	31N	11W	33	4	3	280	160	120
SJ 01137	31N	11W	33	4	4	37	19	18
SJ 02277	31N	11W	34	1	2	16	7	9
SJ 02167	31N	11W	34	1	4	€3	69	14

268235 2135717

SJ 01533	31N	11W 34	1 4	59	40	18
SJ 01251	31N	11W 34	1 4	79	65	14
SJ 03211	31N	11W 34	1 4 1	24	14	10
SJ 01125	31N	11W 34	1 4 2	59	42	17
SJ 01657	31N	11W 34	2	20	6	14
SJ 01675	31N	11W 34	2	33	7	26
SJ 00632	31N	11W 34	2	25	7	18
SJ 01656	31N	11W 34	2	20	6	14
SJ 00656	31N	11W 34	2	30	8	22
SJ 00631	31N	11W 34	2	30	11	19
SJ 03448	31N	11W 34	2 1	41	21	20
SJ 01267	31N	11W 34	2 1	65	45	20
SJ 01618	31N	11W 34	2 1	28	8	20
SJ 01840	31N	11W 34	2 1 1	65	25	40
SJ 03316	31N	11W 34	2 1 1	30	10	20
SJ 00660	31N	11W 34	2 1 1	50	30	20
SJ 01768	31N	11W 34	2 2	20	6	14
SJ 01721	31N	11W 34	2 2	22	10	12
SJ 03172	31N	11W 34	2 2 2	19	7	12
SJ 03047	31N	11W 34	2 2 4	19	6	13
SJ 02119	31N	11W 34	2 3	11	3	8
SJ 02113	31N	11W 34	2 3	12	4	8
SJ 00659	31N	11W 34	2 3	33	11	22
SJ 00661	31N	11W 34	2 3 1	52	32	20
SJ 02972	31N	11W 34	2 3 4	15	5	10
SJ 03107	31N	11W 34	2 4 1	18	8	10
SJ 03106	31N	11W 34	2 4 1	25		
SJ 03183	31N	11W 34	2 4 4	19	6	13
SJ 03780 POD1	31N	11W 34	3 1 2	28	12	16
SJ 02859	31N	11W 34	3 1 4	22	6	16
SJ 02967	31N	11W 34	3 2 3	20	5	15
SJ 02856	31N	11W 34	3 2 3	24	6	18
SJ 02852	31N	11W 34	3 2 3	23	7	16
SJ 03065	31N	11W 34	3 2 3	22	7	15
SJ 03025	31N	11W 34	3 2 3	22	5	17
SJ 03014	31N	11W 34	3 2 4	30	5	25
SJ 03002	31N	11W 34	3 2 4	22		
SJ 02861	31N	11W 34	3 3 1	7	7	14
SJ 03220	31N	11W 34	3 3 1	20	6	14
SJ 03042	31N	11W 34	3 3 2	23	6	17

267922 2130341

SJ 03710	POD1	31N	11W 34	3 3 2
SJ 03048		31N	11W 34	3 3 4
SJ 02857		31N	11W 34	3 4 1
SJ 03492		31N	11W 34	3 4 2
SJ 03631		31N	11W 34	3 4 2
SJ 03493		31N	11W 34	3 4 2
SJ 03357		31N	11W 34	3 4 2
SJ 03260		31N	11W 34	3 4 4
SJ 03609		31N	11W 34	3 4 4
SJ 01608		31N	11W 34	4
SJ 03720	POD1	31N	11W 34	4 1 3
SJ 03497		31N	11W 34	4 1 4
SJ 03402		31N	11W 34	4 1 4
SJ 03377		31N	11W 34	4 2 4
SJ 03016		31N	11W 34	4 3 1
SJ 03739	POD1	31N	11W 34	4 3 1
SJ 02966		31N	11W 34	4 3 3
SJ 00985		31N	11W 34	4 4
SJ 02827		31N	11W 35	1 1 2
SJ 03371		31N	11W 35	1 1 3
SJ 02902		31N	11W 35	1 1 3
SJ 02897		31N	11W 35	1 3 1
SJ 00333		31N	11W 35	1 3 4
SJ 03760	POD1	31N	11W 35	1 4 1
SJ 03543		31N	11W 35	1 4 4
SJ 01144		31N	11W 35	1 4 4
SJ 01319		31N	11W 35	2 2 2
SJ 00185		31N	11W 35	2 3
SJ 03676		31N	11W 35	2 3 1
SJ 03560		31N	11W 35	2 3 2
SJ 03165		31N	11W 35	2 4 4
SJ 03166		31N	11W 35	2 4 4
SJ 00983		31N	11W 35	3
SJ 00939		31N	11W 35	3 1
SJ 00940		31N	11W 35	3 1 1
SJ 01580		31N	11W 35	3 1 2
SJ 02932		31N	11W 35	3 1 2
SJ 02933		31N	11W 35	3 1 4
SJ 03574		31N	11W 35	3 1 4
SJ 00591		31N	11W 35	3 1 4

268465 2130772

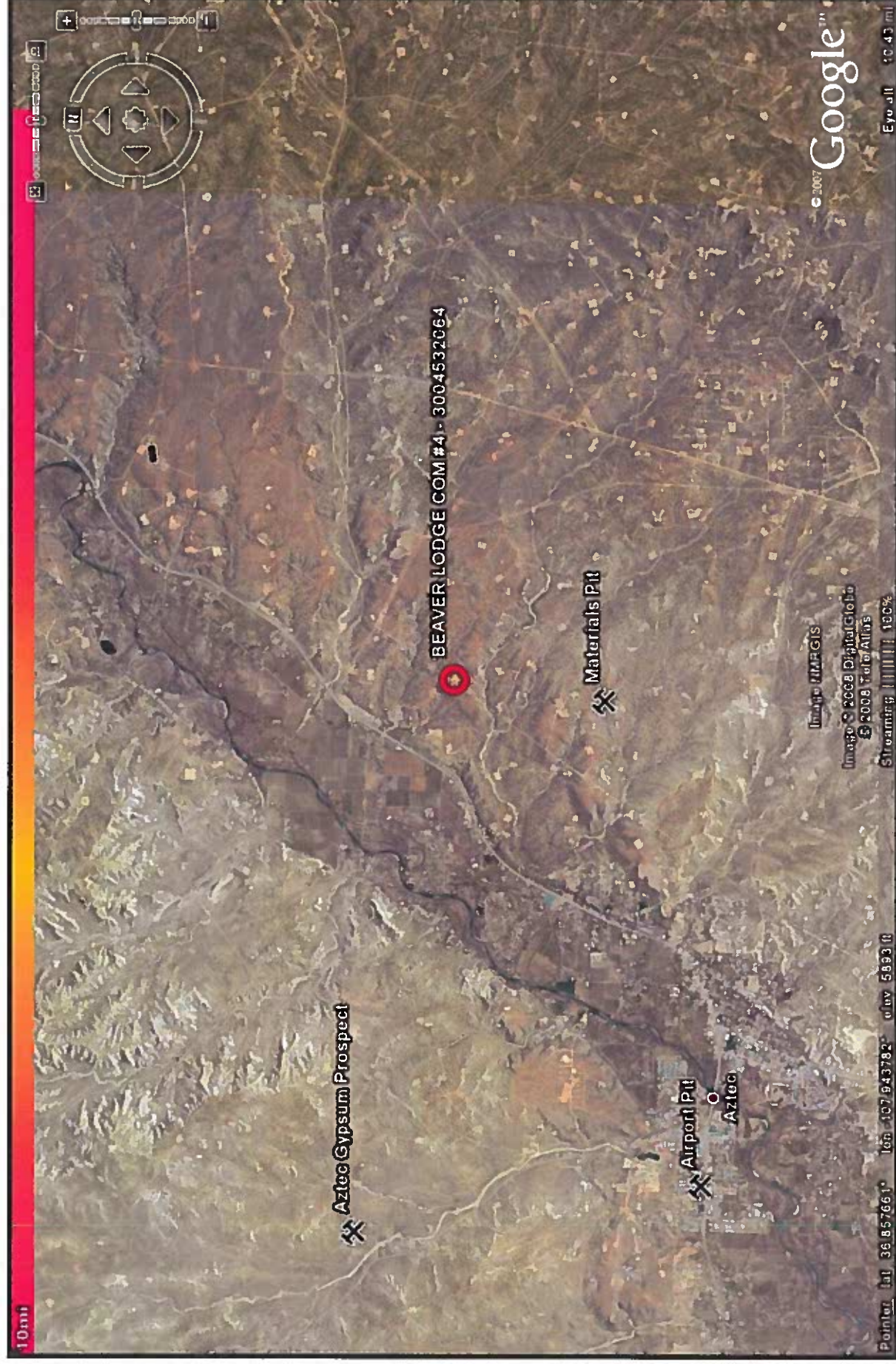
20	4	16
21	4	17
23	6	17
30		
27	6	21
25	15	10
22	6	16
41	3	38
27	6	21
48	17	31
21	6	15
30	10	20
25		
20	2	18
35		
25	3	22
48	20	26
40	16	24
60		
21	5	16
19	5	14
17	6	11
30	6	24
43	12	31
61	30	31
55	30	25
	155	
54		
52	19	33
62	32	30
20		
20		
110	70	40
60	30	30
64	15	45
65	30	35
27	14	13
37	24	13
100		
23	54	25

SJ 00939 1	31N	11W 35	3	2	60	30	30
<u>SJ 00713</u>	31N	11W 35	4	2	37	19	18

SJ 01401	30N	11W 1E	1 3				44	12	32
SJ 03526	30N	11W 1E	1 3 1				40		
SJ 03176	30N	11W 1E	1 4 1				28	20	28
SJ 03177	30N	11W 1E	1 4 2				37	15	22
SJ 03344	30N	11W 1E	1 4 2				100	8	92
SJ 03801 POD1	30N	11W 1E	2 2				21	6	15
SJ 03800 POD1	30N	11W 1E	2 2		266702 2116449		21	6	15
SJ 01639	30N	11W 1E	2 2 2		266718 2116651		40	18	22
SJ 02098	30N	11W 1E	2 4				21	7	14
SJ 02109	30N	11W 1E	2 4				19	4	15
SJ 02123	30N	11W 1E	2 4				22	8	14
SJ 03290	30N	11W 1E	2 4 4				40	10	30
SJ 02045	30N	11W 1E	4 1				480	200	230
SJ 03322	30N	11W 1E	4 4 1				40	10	30
SJ 03320	30N	11W 1E	4 4 3				80		
SJ 03321	30N	11W 1E	4 4 3				80		
SJ 02193	30N	11W 19						105	
SJ 03403	30N	11W 19	1 2 2				400		
SJ 00638	30N	11W 19	2 1				130	70	60
SJ 01073	30N	11W 19	2 1				100	38	62
SJ 03615	30N	11W 19	2 1 1				105	35	70
SJ 03434	30N	11W 19	2 1 4				140		
SJ 03088	30N	11W 19	2 1 4				120	80	40
SJ 01636	30N	11W 19	2 2				70	25	45
SJ 02862	30N	11W 19	2 2 3				20		
SJ 00284	30N	11W 19	2 4				200	35	165
SJ 03645	30N	11W 19	3 1 1				60	20	40
SJ 03633	30N	11W 19	3 1 3				20		
SJ 01621	30N	11W 19	3 2				40	38	2
SJ 02692	30N	11W 19	3 2 2				52	12	40
SJ 02968	30N	11W 19	3 2 2				75	5	70
SJ 02812	30N	11W 19	3 2 2				50		
SJ 01123	30N	11W 19	4 1				40	15	25
SJ 03437	30N	11W 19	4 1 2				30		
SJ 03315	30N	11W 19	4 1 2				60	54	6
SJ 00284 CLM222415	30N	11W 19	4 4				200	35	165
SJ 03224	30N	11W 30	1 2 4				80	30	50
SJ 03077	30N	11W 30	2 1 1				75	70	5
SJ 03668	30N	11W 30	2 1 2				380	230	100
SJ 03251	30N	11W 32	3 4 4				150	77	73



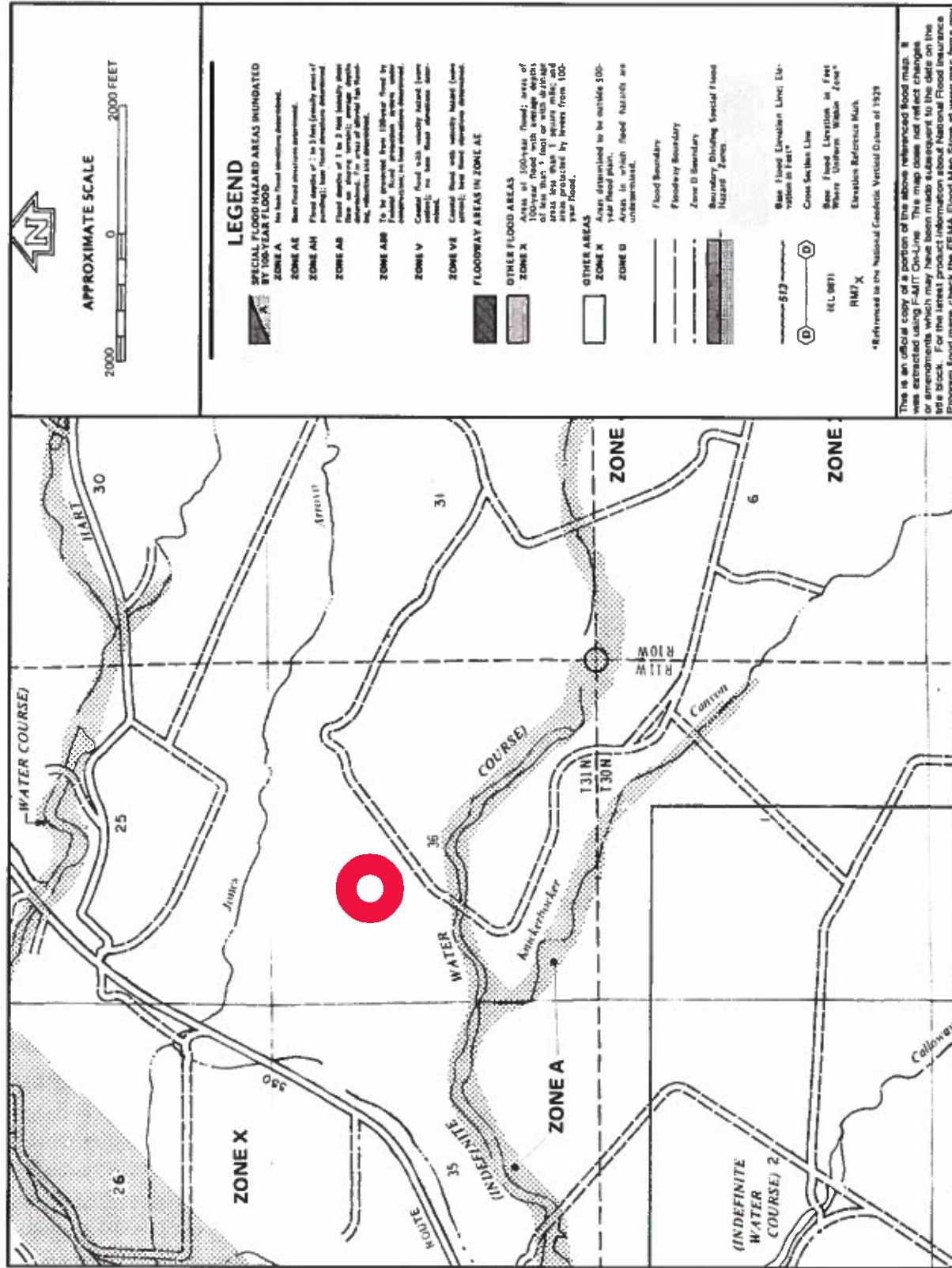
<p>Lodestar Services, Inc PO Box 4465 Durango, CO 81302</p>	<p>BEAVER LODGE COM #4 T31N, R11W, S36F San Juan County, NM</p>	<p>Aerial Photograph</p>
---------------------------------------------------------------------	-------------------------------------------------------------------------	--------------------------



Lodestar Services, Inc
PO Box 4465
Durango, CO 81302

BEAVER LODGE COM #4
T31N, R11W, S36F
San Juan County, NM

Mines, Mills, and
Quarries Map



<p>Lodestar Services, Inc PO Box 4465 Durango, CO 81302</p>	<p>BEAVER LODGE COM #4 T31N, R11W, S36F San Juan County, NM</p>	<p>FEMA Flood Zone Map</p>
---------------------------------------------------------------------	-------------------------------------------------------------------------	----------------------------

XTO Energy Inc.
San Juan Basin (Northwest New Mexico)
General Design and Construction Plan
For Below-Grade Tanks

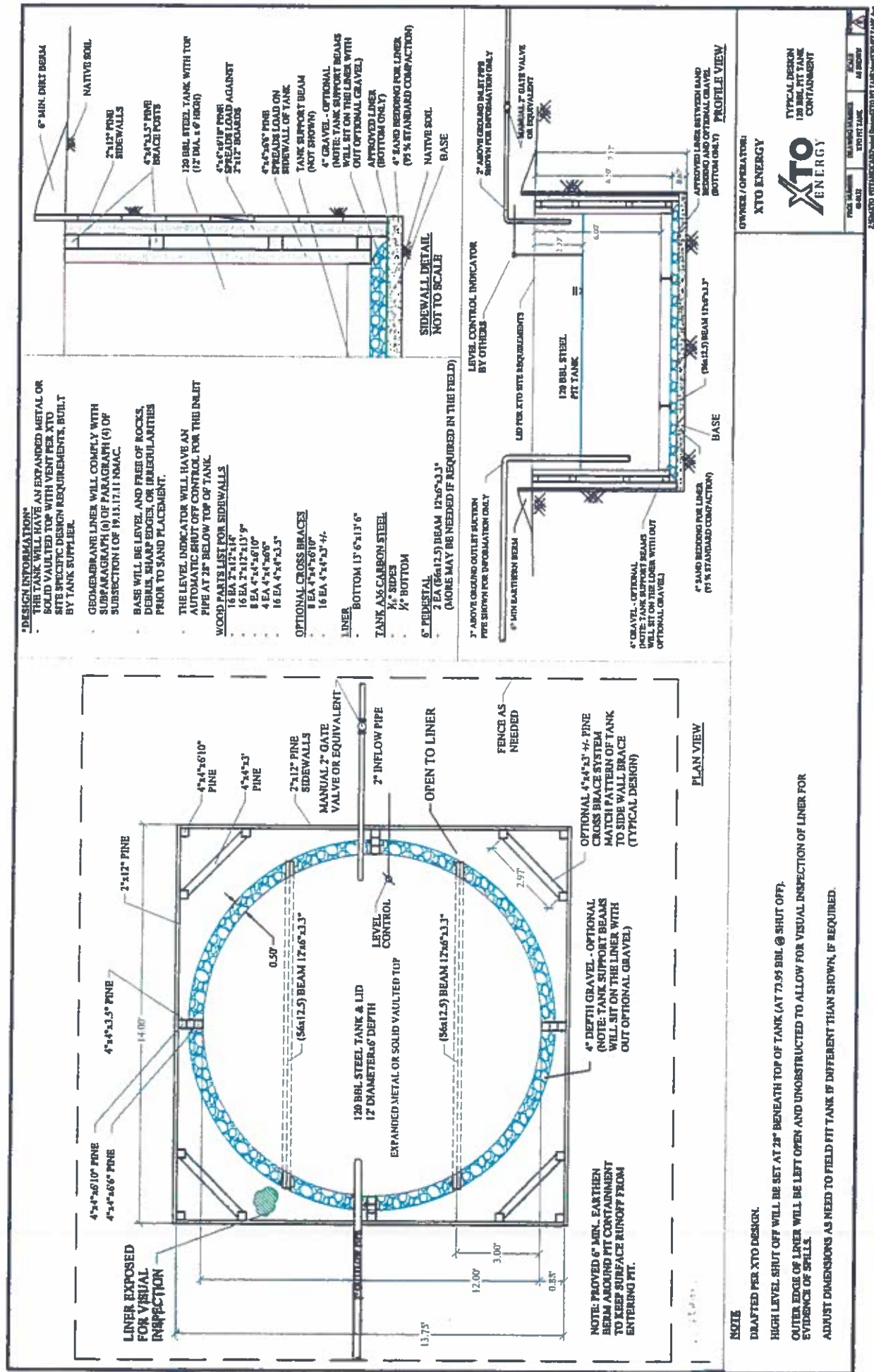
In accordance with Rule 19.15.17.11 NMAC the following information describes the design and construction of below-grade tanks on XTO Energy Inc. (XTO) locations. This is XTO's standard procedure for all below-grade tanks. A separate plan will be submitted for any below-grade tank which does not conform to this plan.

General Plan

1. XTO will design and construct below-grade tanks to contain liquids and solids and prevent contamination of fresh water and protect public health and environment.
2. XTO will post a well sign, in compliance with 19.15.3.103 NMAC, on the existing well site operated by XTO where the existing below-grade tank is located. The sign will list the Operator on record as the operator, the location of the well site by unit letter, section, township, range, and emergency telephone numbers.
3. XTO is requesting approval of an alternative fencing to be used on below-grade tank locations. Below-grade tank locations will be fenced utilizing 48" steel mesh field-fence (hogwire) with pipe railing along the top. A 6' chain link fence will be utilized around the well pad if the well site is within a city limits or ¼ mile of a permanent residence, school, hospital, institution or church. Below-grade tanks located within 1000' of a permanent residence, school, hospital, institution or church will be fenced by 6' chain link fence with at least two strands of barbed wire at the top. All gates associated with below-grade tanks will remain closed and locked when responsible individuals are not on site.
4. XTO shall construct below-grade tanks with an expanded metal covering or solid vaulted top on the top of the below-grade tank.
5. XTO will ensure that below-grade tanks are constructed of materials resistant to the below-grade tank's particular contents and resistant to damage from sunlight. Tanks will be constructed of A36 carbon steel with 3/16" sides and ¼" bottom. (See attached drawing).
6. The below-grade tank system will have a properly constructed foundation consisting of a level base free of rocks, debris, sharp edges or irregularities to prevent punctures, cracks or indentations of the liner or tank bottom. Sand bedding (4") will be placed on top of a level foundation to ensure prevention of punctures, cracks or indentations of the liner or tank bottom.
7. XTO will construct a berm and/or diversion ditch in a manner that prevents the collection of surface water run-on. Below-grade tanks will be equipped with automatic high level shut-off devices as well as manually operated shut-off valves. (See attached drawing).
8. XTO will construct and use below-grade tanks that do not have double walls. The below-grade tank sidewalls will be open for visual inspection for leaks. The sidewalls of the cellar will be constructed with 2" X 12" pine sidewalls and 4" X 4" pine brace posts. The below-grade tank

XTO Energy Inc.
San Juan Basin (Northwest New Mexico)
General Design and Construction Plan
For Below-Grade Tanks
Page 2

- bottom will be elevated a minimum of 6" above the underlying ground surface and the below-grade tank will be underlain with a geomembrane liner to divert leaked liquid to a location that can be visually inspected. (See attached drawing).
9. XTO will equip below-grade tanks designed in this manner with a properly functioning automatic high-level shut-off control device and manual controls to prevent overflows. (See attached drawing).
 10. XTO will demonstrate to the OCD that the geomembrane liner complies with the specifications of Subparagraph (a) of Paragraph (4) of Subsection I of 19.15.17.11 NMAC and obtain approval from OCD prior to the installation of the design. The geomembrane liner shall have a hydraulic conductivity no greater than 1×10^{-9} cm/sec. The geomembrane liner shall be composed of an impervious, synthetic material that is resistant to petroleum hydrocarbons, salts and acids and alkaline solutions. The liner material shall be resistant to ultraviolet light. Liner compatibility shall comply with EPA SW-846 method 9090A. (See attached drawing).
 11. The general specifications for design and construction are attached.



XTO Energy Inc.
San Juan Basin (Northwest New Mexico)
General Maintenance and Operating Plan
For Below-Grade Tanks

In accordance with Rule 19.15.17.12 NMAC the following information describes the operation and maintenance of below-grade tanks on XTO Energy Inc. (XTO) locations. This is XTO's standard procedure for all below-grade tanks. A separate plan will be submitted for any below-grade tank which does not conform to this plan.

General Plan

1. XTO will operate and maintain below-grade tanks to contain liquids and solids, maintain the integrity of the liner and secondary containment system, prevent contamination of fresh water and protect public health and the environment. Fluid levels will be monitored weekly and high levels will be removed as necessary. Monthly inspections will be conducted to monitor integrity of below-grade tank systems and below-grade tanks will be equipped with automatic high-level shut-off devices.
2. XTO will not allow below-grade tanks to overflow and will use berms and/or diversion ditch to prevent surface run on to enter the below-grade tank. Below-grade tanks will be equipped with automatic high-level shut-off control devices as well as manually operated shut-off valves. See attached drawing for vault design and placement of diversion berms and shut-off devices.
3. XTO will continuously remove any visible or measurable layer of oil from the fluid surface of below-grade tanks in order to prevent significant accumulation of oil.
4. XTO will inspect the below-grade tank monthly and maintain written records for five years. Monthly inspections will consist of documenting the following: (see attached template),
 - Well Name
 - API #
 - Sec., Twn., Rng.
 - XTO Inspector's name
 - Inspection date and time
 - Visible tears in liner
 - Visible signs of tank overflow
 - Collection of surface run on
 - Visible layer of oil
 - Visible signs of tank leak
 - Estimated freeboard
5. XTO will maintain adequate freeboard to prevent over topping of the below-grade tank. High level shut-off devices control the freeboard at an average of 28" beneath the top of the tank.
6. XTO will not discharge into or store any hazardous waste in any below-grade tank.
7. If a below-grade tank develops a leak, or if any penetration of a below-grade tank occurs below the liquids surface, XTO will remove all liquids above the damage or leak line within 48 hours,

XTO Energy Inc.
San Juan Basin (Northwest New Mexico)
General Maintenance and Operating Plan
For Below-Grade Tanks
Page 2

notify the appropriate division district office within 48 hours of the discovery and repair the damage or replace the below-grade tank. If an existing below-grade tank does not meet current requirements of Paragraphs 1-4 of Subsection I of 19.15.17.11 NMAC the tank will be modified or retrofitted to comply. If compliance can not be achieved XTO will implement the approved closure plan.

**XTO Energy Inc.
San Juan Basin (Northwest New Mexico)
General Closure Plan
For Below-Grade Tanks**

In accordance with Rule 19.15.17.13 NMAC the following information describes the closure requirements of below-grade tanks on XTO Energy Inc. (XTO) locations. This is XTO's standard procedure for all below-grade tanks. A separate plan will be submitted for any below-grade tank which does not conform to this plan.

General Plan

1. XTO will close below-grade tanks within the time periods provided in 19.15.17.13 NMAC, or by an earlier date that the division requires because of imminent danger to fresh water, public health or the environment.
2. XTO will close a below-grade tank that does not meet the requirements of Paragraphs (1) through (4) of Subsection I of 19.15.17.11 NMAC or is not included in Paragraph (5) of Subsection I of 19.15.17.11 NMAC within five years after June 16, 2008, if not retrofitted to comply with Paragraphs (1) through (4) of Subsection I of 19.15.17.11 NMAC.
3. XTO will close a permitted below-grade tank within 60 days of cessation of the below-grade tank's operation or as required by the transitional provisions of Subsection B of 19.15.17.17 NMAC in accordance with a closure plan that the appropriate division district office approves. The closure report will be filed on form C-144.
4. XTO will remove liquids and sludge from below-grade tanks prior to implementing a closure method and will dispose of the liquids and sludge in a division-approved facility. Approved facilities and waste streams include:
 - Envirotech Permit No. NM01-0011 and IEI Permit No. NM 01-0010B
 - Soil contaminated by exempt petroleum hydrocarbons
 - Produced sand, pit sludge and contaminated bottoms from storage of exempt wastes
 - Basin Disposal Permit No. NM01-005
 - Produced water
5. XTO will remove the below-grade tank and dispose of it in a division approved facility or recycle, reuse, or reclaim it in a manner that the appropriate division district office has approved prior to removal. Any associated liners will be removed, properly cleaned and disposed of per 19.15.9.712 NMAC at San Juan County Landfill. Documentation of the final disposition will be included in the closure report.
6. XTO will remove any on-site equipment associated with a below-grade tank unless the equipment is required for some other purpose.
7. XTO will test the soils beneath the below-grade tank to determine whether a release has occurred. At a minimum 5 point composite sample will be collected along with individual grab samples from any area that is wet, discolored or showing other evidence of a release. Samples will be

XTO Energy Inc.
 San Juan Basin (Northwest New Mexico)
 General Closure Plan
 For Below-Grade Tanks
 Page 2

analyzed for BTEX, TPH and chlorides to demonstrate that the benzene concentration, as determined by EPA SW-846 methods 8021B or 8260B or EPA method that the division approves, does not exceed 0.2 mg/kg; total BTEX concentration, as determined by EPA SW-846 methods 8021B or 8260B or other EPA method that the division approves, does not exceed 50 mg/kg; the TPH concentration, as determined by EPA method 418.1 or other EPA method that the division approves, does not exceed 100mg/kg, and the chloride concentration, as determined by EPA method 300.1 or other EPA method that the division approves, does not exceed 250 mg/kg, or the background concentration, whichever is greater. XTO will notify the division of its results on form C-141.

8. If XTO or the division determines that a release has occurred, XTO will comply with 19.15.3.116 NMAC and 19.15.1.19NMAC as appropriate.
9. If the sampling program demonstrates that a release has not occurred or that any release does not exceed the concentrations specified in Paragraph (4) of Subsection E of 19.15.17.13 NMAC, XTO will backfill the excavation with compacted, non-waste containing, earthen material; construct a division prescribed soil cover; recontour and re-vegetate the site.
10. Notice of Closure operations will be given to the Aztec Division District III office between 72 hours and one week prior to the start of closure activities via email or verbally.
 The notification will include the following:
 - i. Operator's name
 - ii. Well Name and API Number
 - iii. Location by Unit Letter, Section, Township, and Range

The surface owner shall also be notified prior to the implementation of any closure operations of below-grade tanks as per the approved closure plan using certified mail, return receipt requested.

11. Re-contouring of location will match fit, shape, line, form and texture of the surrounding area. Re-shaping will include drainage control, prevent ponding, and prevent erosion. Natural drainages will be unimpeded and water bars and/or silt traps will be placed in areas where needed to prevent erosion on a large scale. Final re-contour shall have a uniform appearance with smooth surface, fitting the natural landscape.
12. A minimum of 4 feet of cover shall be achieved and the cover shall include 1 foot of suitable material to establish vegetation at the site, or the background thickness of topsoil, whichever is greater. Soil cover will be constructed to the site's existing grade and ponding of water and erosion of the cover material will be prevented with drainage control, natural drainages and silt traps where needed.
13. XTO will seed the disturbed areas the first growing season after the operator closes the pit. Seeding will be accomplished via drilling on the contour whenever practical or by other division-approved methods. BLM or Forest Service stipulated seed mixes will be used on federal lands. Vegetative cover will equal 70% of the native perennial vegetative cover (un-impacted) consisting of at least three native plant species, including at least one grass, but not including noxious weeds, and maintain that cover through two successive growing seasons. Repeat seeding or planting will be continued until successful vegetative growth occurs.

XTO Energy Inc.
San Juan Basin (Northwest New Mexico)
General Closure Plan
For Below-Grade Tanks
Page 3

14. All closure activities will include proper documentation and be available for review upon request and will be submitted in closure report form to OCD within 60 days of closure of the below-grade tank. Closure report will be filed on form C-144 and incorporate the following:
- i. Proof of closure notice to division and surface owner;
 - ii. Details on capping and covering, where applicable;
 - iii. Inspection reports;
 - iv. Confirmation sampling analytical results;
 - v. Disposal facility name(s) and permit number(s);
 - vi. Soil backfilling and cover installation;
 - vii. Re-vegetation application rates and seeding techniques, (or approved alternative to re-vegetation requirements if applicable);
 - viii. Photo documentation of the site reclamation.

District I

1625 N. French Dr., Hobbs, NM 88240
Phone:(575) 393-6161 Fax:(575) 393-0720

District II

811 S. First St., Artesia, NM 88210
Phone:(575) 748-1283 Fax:(575) 748-9720

District III

1000 Rio Brazos Rd., Aztec, NM 87410
Phone:(505) 334-6178 Fax:(505) 334-6170

District IV

1220 S. St Francis Dr., Santa Fe, NM 87505
Phone:(505) 476-3470 Fax:(505) 476-3462

State of New Mexico
Energy, Minerals and Natural Resources
Oil Conservation Division
1220 S. St Francis Dr.
Santa Fe, NM 87505

QUESTIONS

Action 99840

QUESTIONS

Operator: HILCORP ENERGY COMPANY 1111 Travis Street Houston, TX 77002	OGRID: 372171
	Action Number: 99840
	Action Type: [C-144] Legacy Below Grade Tank Plan (C-144LB)

QUESTIONS

Facility and Ground Water	
<i>Please answer as many of these questions as possible in this group. More information will help us identify the appropriate associations in the system.</i>	
Facility or Site Name	Beaver Lodge Com 4
Facility ID (##), if known	Not answered.
Facility Type	Below Grade Tank - (BGT)
Well Name, include well number	Beaver Lodge Com 4
Well API, if associated with a well	30-045-32064
Pit / Tank Type	Not answered.
Pit / Tank Name or Identifier	Not answered.
Pit / Tank Opened Date, if known	Not answered.
Pit / Tank Dimensions, Length (ft)	Not answered.
Pit / Tank Dimensions, Width or Diameter (ft)	Not answered.
Pit / Tank Dimensions, Depth (ft)	Not answered.
Ground Water Depth (ft)	Not answered.
Ground Water Impact	Not answered.
Ground Water Quality (TDS)	Not answered.

Below-Grade Tank

Subsection I of 19.15.17.11 NMAC

Volume / Capacity (bbls)	120
Type of Fluid	Produced Water
Pit / Tank Construction Material	Not answered.
Secondary containment with leak detection	Not answered.
Visible sidewalls, liner, 6-inch lift and automatic overflow shut-off	Not answered.
Visible sidewalls and liner	Not answered.
Visible sidewalls only	Not answered.
Tank installed prior to June 18, 2008	True
Other, Visible Notation. Please specify	visible sidewalls, vaulted, automatic high-level shutoff, no liner
Liner Thickness (mil)	Not answered.
HDPE (Liner Type)	Not answered.
PVC (Liner Type)	Not answered.
Other, Liner Type. Please specify (Variance Required)	Not answered.

District I

1625 N. French Dr., Hobbs, NM 88240
 Phone:(575) 393-6161 Fax:(575) 393-0720

District II

811 S. First St., Artesia, NM 88210
 Phone:(575) 748-1283 Fax:(575) 748-9720

District III

1000 Rio Brazos Rd., Aztec, NM 87410
 Phone:(505) 334-6178 Fax:(505) 334-6170

District IV

1220 S. St Francis Dr., Santa Fe, NM 87505
 Phone:(505) 476-3470 Fax:(505) 476-3462

State of New Mexico
Energy, Minerals and Natural Resources
Oil Conservation Division
1220 S. St Francis Dr.
Santa Fe, NM 87505

QUESTIONS, Page 2

Action 99840

QUESTIONS (continued)

Operator: HILCORP ENERGY COMPANY 1111 Travis Street Houston, TX 77002	OGRID: 372171
	Action Number: 99840
	Action Type: [C-144] Legacy Below Grade Tank Plan (C-144LB)

QUESTIONS

Fencing	
<i>Subsection D of 19.15.17.11 NMAC (Applies to permanent pits, temporary pits, and below-grade tanks)</i>	
Chain link, six feet in height, two strands of barbed wire at top (<i>Required if located within 1000 feet of a permanent residence, school, hospital, institution or church</i>)	Not answered.
Four foot height, four strands of barbed wire evenly spaced between one and four feet	Not answered.
Alternate, Fencing. Please specify (Variance Required)	4' hogwire

Netting	
<i>Subsection E of 19.15.17.11 NMAC (Applies to permanent pits and permanent open top tanks)</i>	
Screen	Not answered.
Netting	Not answered.
Other, Netting. Please specify (Variance May Be Needed)	expanded metal or vaulted top

Signs	
<i>Subsection C of 19.15.17.11 NMAC (If there are multiple operators at a site, each operator must have their own sign in compliance with Subsection C of 19.15.17.11 NMAC.)</i>	
12"x 24", 2" lettering, providing Operator's name, site location, and emergency telephone numbers	Not answered.
Signed in compliance with 19.15.16.8 NMAC	Not answered.

Variances and Exceptions	
<i>Justifications and/or demonstrations of equivalency are required. Please refer to 19.15.17 NMAC for guidance.</i>	
Please check a box if one or more of the following is requested, if not leave blank:	
Variance(s): Requests must be submitted to the appropriate division district for consideration of approval.	Not answered.
Exception(s): Requests must be submitted to the Santa Fe Environmental Bureau office for consideration of approval	Not answered.

District I

1625 N. French Dr., Hobbs, NM 88240
Phone:(575) 393-6161 Fax:(575) 393-0720

District II

811 S. First St., Artesia, NM 88210
Phone:(575) 748-1283 Fax:(575) 748-9720

District III

1000 Rio Brazos Rd., Aztec, NM 87410
Phone:(505) 334-6178 Fax:(505) 334-6170

District IV

1220 S. St Francis Dr., Santa Fe, NM 87505
Phone:(505) 476-3470 Fax:(505) 476-3462

State of New Mexico
Energy, Minerals and Natural Resources
Oil Conservation Division
1220 S. St Francis Dr.
Santa Fe, NM 87505

QUESTIONS, Page 3

Action 99840

QUESTIONS (continued)

Operator: HILCORP ENERGY COMPANY 1111 Travis Street Houston, TX 77002	OGRID: 372171
	Action Number: 99840
	Action Type: [C-144] Legacy Below Grade Tank Plan (C-144LB)

QUESTIONS

Siting Criteria (regarding permitting) 19.15.17.10 NMAC

Instructions: The applicant must demonstrate compliance for each siting criteria below in the application. Recommendations of acceptable source material are provided below. Siting criteria does not apply to drying pads or above-grade tanks.

Siting Criteria, General Siting	
Ground water is less than 25 feet below the bottom of a low chloride temporary pit or below-grade tank	No
NM Office of the State Engineer - iWATERS database search	True
USGS	Not answered.
Data obtained from nearby wells	Not answered.

Siting Criteria, Below Grade Tanks	
Within 100 feet of a continuously flowing watercourse, significant watercourse, lakebed, sinkhole, wetland or playa lake (measured from the ordinary high-water mark)	No
Within 200 horizontal feet of a spring or a fresh water well used for public or livestock consumption	No

Proposed Closure Method	
Below-grade Tank	Below Grade Tank - (BGT)
Waste Excavation and Removal	True
Alternate Closure Method. Please specify (Variance Required)	Not answered.

Operator Application Certification	
Registered / Signature Date	11/21/2008

District I
1625 N. French Dr., Hobbs, NM 88240
Phone:(575) 393-6161 Fax:(575) 393-0720
District II
811 S. First St., Artesia, NM 88210
Phone:(575) 748-1283 Fax:(575) 748-9720
District III
1000 Rio Brazos Rd., Aztec, NM 87410
Phone:(505) 334-6178 Fax:(505) 334-6170
District IV
1220 S. St Francis Dr., Santa Fe, NM 87505
Phone:(505) 476-3470 Fax:(505) 476-3462

State of New Mexico
Energy, Minerals and Natural Resources
Oil Conservation Division
1220 S. St Francis Dr.
Santa Fe, NM 87505

ACKNOWLEDGMENTS

Action 99840

ACKNOWLEDGMENTS

Operator: HILCORP ENERGY COMPANY 1111 Travis Street Houston, TX 77002	OGRID: 372171
	Action Number: 99840
	Action Type: [C-144] Legacy Below Grade Tank Plan (C-144LB)

ACKNOWLEDGMENTS

<input checked="" type="checkbox"/>	I acknowledge that I have received prior approval from the OCD to submit documentation of a legacy below-grade tank on behalf of my operator.
<input checked="" type="checkbox"/>	I hereby certify that the information submitted with this documentation is true, accurate and complete to the best of my knowledge and belief.

District I
1625 N. French Dr., Hobbs, NM 88240
Phone:(575) 393-6161 Fax:(575) 393-0720
District II
811 S. First St., Artesia, NM 88210
Phone:(575) 748-1283 Fax:(575) 748-9720
District III
1000 Rio Brazos Rd., Aztec, NM 87410
Phone:(505) 334-6178 Fax:(505) 334-6170
District IV
1220 S. St Francis Dr., Santa Fe, NM 87505
Phone:(505) 476-3470 Fax:(505) 476-3462

State of New Mexico
Energy, Minerals and Natural Resources
Oil Conservation Division
1220 S. St Francis Dr.
Santa Fe, NM 87505

CONDITIONS

Action 99840

CONDITIONS

Operator: HILCORP ENERGY COMPANY 1111 Travis Street Houston, TX 77002	OGRID: 372171
	Action Number: 99840
	Action Type: [C-144] Legacy Below Grade Tank Plan (C-144LB)

CONDITIONS

Created By	Condition	Condition Date
swells	None	8/10/2022