

Well Name: SHEETS A	Well Location: T25N / R7W / SEC 6 / SENW / 36.431152 / -107.620499	County or Parish/State: RIO ARRIBA / NM
Well Number: 2	Type of Well: CONVENTIONAL GAS WELL	Allottee or Tribe Name:
Lease Number: NMSF080375A	Unit or CA Name:	Unit or CA Number:
US Well Number: 300390616500S1	Well Status: Abandoned	Operator: MORNINGSTAR OPERATING LLC

Subsequent Report

Sundry ID: 2690607

Type of Submission: Subsequent Report

Type of Action: Plug and Abandonment

Date Sundry Submitted: 09/02/2022

Time Sundry Submitted: 12:48

Date Operation Actually Began: 08/15/2022

Actual Procedure: MorningStar has plugged and abandoned the Sheets A #2 as of 8/29/2022. Attached are the Daily and Cementing Reports, Final WBD, and CBL.

SR Attachments

Actual Procedure

Sheets_A_2_CBL_20220902123923.pdf

Sheets_A_2_PA_WBD_Final_20220902123912.pdf

Sheets_A_2_PA_Daily_Cementing_Reports_20220902123903.pdf

Well Name: SHEETS A

Well Location: T25N / R7W / SEC 6 /
SENW / 36.431152 / -107.620499

County or Parish/State: RIO
ARRIBA / NM

Well Number: 2

Type of Well: CONVENTIONAL GAS
WELL

Allottee or Tribe Name:

Lease Number: NMSF080375A

Unit or CA Name:

Unit or CA Number:

US Well Number: 300390616500S1

Well Status: Abandoned

Operator: MORNINGSTAR
OPERATING LLC

Operator

I certify that the foregoing is true and correct. Title 18 U.S.C. Section 1001 and Title 43 U.S.C. Section 1212, make it a crime for any person knowingly and willfully to make to any department or agency of the United States any false, fictitious or fraudulent statements or representations as to any matter within its jurisdiction. Electronic submission of Sundry Notices through this system satisfies regulations requiring a

Operator Electronic Signature: CONNIE BLAYLOCK

Signed on: SEP 02, 2022 12:39 PM

Name: MORNINGSTAR OPERATING LLC

Title: Regulatory Technician

Street Address: 400 W 7th St.

City: Forth Worth

State: TX

Phone: (817) 334-7882

Email address: CBLAYLOCK@MSPARTNERS.COM

Field

Representative Name: AMY BYARS

Street Address: 400 W 7TH ST

City: FORT WORTH

State: TX

Zip: 76102

Phone: (817)334-8096

Email address: ABYARS@MSPARTNERS.COM

BLM Point of Contact

BLM POC Name: KENNETH G RENNICK

BLM POC Title: Petroleum Engineer

BLM POC Phone: 5055647742

BLM POC Email Address: krennick@blm.gov

Disposition: Accepted

Disposition Date: 09/09/2022

Signature: Kenneth Rennick

Morningstar Operating LLC

Plug And Abandonment End Of Well Report

Sheets A #002

1840' FNL & 1498' FWL, Section 6, 25N, 07W

Rio Arriba County, NM / API 30-039-06165

Work Summary:

- 8/14/22** Made BLM and NMOCD P&A operations notifications at 9:00 AM MST.
- 8/15/22** MOL and R/U P&A rig. Checked well pressures: Tubing 0 psi, Casing: 0 psi, Bradenhead: 0 psi. Bled down well. N/D wellhead. N/U BOP and function tested. Secured and shut in well for the day.
- 8/16/22** Checked well pressures: Tubing 0 psi, Casing: 0 psi, Bradenhead: 0 psi. Bled down well. Changed out equipment for 1-1/4" tubing. R/U floor. L/D 135 joints of 1-1/4" tubing and 1 joint of perforated 1-1/4" tubing. Changed out equipment for 2-3/8" work-string. P/U 5.5" scraper and TIH to 626'. Stopped work due to rain and lightning. Secured and shut in well for the day.
- 8/17/22** Checked well pressures: Tubing 0 psi, Casing: 0 psi, Bradenhead: 0 psi. P/U 2-3/8" work-string and continued to TIH with 5.5" casing scraper to 2780'. TOOH. Removed 5.5" casing scraper and installed 5.5" CR. TIH and set CR at 2724'. R/U cementing services. Attempted to circulate hole with 74 bbls but was unsuccessful. Pumped plug #1 from 2724' to approximately 2504' the cover the Pictured Cliffs perforations and formation top. R/D cementing services. TOOH. WOC 4 hours. TIH and tagged TOC at 2826'. TOOH. Secured and shut in well for the day. Received approval from John Ryza (Morningstar), Dustin Porch (BLM), and Monica Kuehling (NMOCD) to set another CR at 2674' and repump plug 1.
- 8/22/22** Checked well pressures: Tubing: 0 psi, Casing: 0 psi, Bradenhead: 0 psi. Bled down well. P/U CR. TIH. Set CR at 2658'. R/U Cementing

services. Circulated with 70 bbls of fresh water. Attempted to pressure test but was unsuccessful. Pumped plug #2 from 2685' to 2504' to cover the Pictured Cliffs perforations and formation top. TOOH and WOC 4 hours. TIH and tagged the top of Plug #2 at 2480'. R/U wireline services and ran CBL from 2480' to surface. Results were sent to BLM and NMOCD for review. TIH with tubing to 2480'. R/U cementing services. The decision was made to extend plug #2 from 2480' to 1764' to cover the Fruitland, Ojo Alamo, and Kirtland formation tops. TOOH and WOC overnight. Shut in and secured well.

8/24/22 Checked well pressures: Tubing: 0 psi, Casing: 0 psi, Bradenhead: 0 psi. Bled down well. TIH with 2-3/8" tag sub and tagged the top of plug #2 at 2080'. R/U cementing services. Re-pumped plug #2 from 2080' to 1764' to cover the Fruitland, Ojo Alamo, and Kirtland formation tops. TOOH and WOC 4 hours. TIH and tagged the top of plug #2 at 1761'. L/D 39 joints of 2-3/8" work string. R/U cementing services. Pumped plug #3 from 531' to 360' to cover the Nacimiento formation top. TOOH. WOC overnight. Shut in and secured well.

8/26/22 Checked well pressures: Tubing: 0 psi, Casing: 0 psi, Bradenhead: 0 psi. Bled down well. TIH with 2-3/8" tag sub and tagged the top of plug #3 at 558'. Re-Pumped plug #3 from 558' to 360' to cover the Nacimiento formation top. L/D 8 joints and stood back 5 stands. WOC 4 hours. TIH with tubing to 407' but did not tag TOC. Sample cement on surface was still not cured. WOC an additional hour. Decision was made to shut down to WOC overnight. Shut in and secured well.

8/29/22 Checked well pressures: Tubing: 0 psi, Casing: 0 psi, Bradenhead: 0 psi. TIH with 2-3/8" tag sub and tagged Cement at 330'. L/D 2-3/8" work string. R/U wireline services and perforated at 172'. R/U cementing services. Pumped cement down casing, into perforations at 172' and out Braden Head at surface. N/D BOP and cut off wellhead. Installed P&A marker per NMDOC, and BLM regulations. Ran weighted tally tape down production casing and tagged Cement 28' down. Cement was at surface in surface casing. RIH with poly pipe and topped off casing to surface and filled cellar. R/D and MOL.

Plug Summary:

Plug #1: (2,880'-2,826', 25 Sacks Type III Cement)

Attempted to pump 25 sx of Type III cement on top of the CR set at 2724. The CR failed and cement was tagged at 2,826'. Received approval from John Ryza (Morningstar), Dustin Porch (BLM), and

Monica Kuehling (NMOCD) to set another CR at 2674' and repump plug 1.

Plug #2: (Pictured Cliffs Perforations. Pictured Cliffs, Fruitland, Ojo Alamo, and Kirtland Formation Tops 2,658'-1,761', 117 Sacks Type III Cement)

Set CR at 2658'. R/U Cementing services. Circulated with 70 bbls of fresh water. Attempted to pressure test but was unsuccessful. Pumped plug #2 from 2685' to 2504' to cover the Pictured Cliffs perforations and formation top. TOOH and WOC 4 hours. TIH and tagged the top of Plug #2 at 2480'. The decision was made to extend plug #2 from 2480' to 1764' to cover the Fruitland, Ojo Alamo, and Kirtland formation tops. TIH with 2-3/8" tag sub and tagged the top of plug #2 at 2080'. R/U cementing services. Re-pumped plug #2 from 2080' to 1764' to cover the Fruitland, Ojo Alamo, and Kirtland formation tops. TOOH and WOC 4 hours. TIH and tagged the top of plug #2 at 1761'.

Plug #3: (Nacimiento Formation Top 558'-330', 40 Sacks Type III Cement)

Pumped plug #3 from 531' to 360' to cover the Nacimiento formation top. TOOH. WOC overnight. TIH with 2-3/8" tag sub and tagged the top of plug #3 at 558'. Re-Pumped plug #3 from 558' to 360' to cover the Nacimiento formation top. WOC overnight. TIH with 2-3/8" tag sub and tagged Cement at 330'.

Plug #4: (Casing Shoe and Surface 172'-Surface', 84 Sacks Type III Cement [12 sx for top off])

R/U wireline services and perforated at 172'. R/U cementing services. Pumped cement down casing, into perforations at 172' and out Braden Head at surface. N/D BOP and cut off wellhead. Installed P&A marker per NMDOC, and BLM regulations. Ran weighted tally tape down production casing and tagged Cement 28' down. Cement was at surface in surface casing. RIH with poly pipe and topped off casing to surface and filled cellar.

P & A Daily Report



Company:	Morningstar Operating
Well Name:	Sheets A #002
API #:	30-039-06165
Date:	8/15/2022

PO Box 538 Farmington, NM 87499 505.327.7301

WORK SUMMARY

MOL and R/U P&A rig. Checked well pressures (see pressures below). Bled down well. N/D wellhead. N/U BOP and function tested. Secured and shut in well for the day.

PLUG SUMMARY

<u>Plug No</u>	<u>Plug Depth</u>	<u>Sacks of Cement Used</u>
Plug 1	To _____	_____
Plug 2	To _____	_____
Plug 3	To _____	_____
Plug 4	To _____	_____
Plug 5	To _____	_____
Plug 6	To _____	_____
Plug 7	To _____	_____
Plug 8	To _____	_____
Plug 9	To _____	_____

BRIDGE PLUG/CEMENT RETAINER SUMMARY

Depth Set

WELL PRESSURES

Tubing	_____	0 psi
Casing	_____	90 psi
Bradenhead	_____	0 psi

P & A Daily Report



Company: Morningstar Operating
 Well Name: Sheets A #002
 API #: 30-039-06165
 Date: 8/16/2022

PO Box 538 Farmington, NM 87499 505.327.7301

WORK SUMMARY

Checked well pressures (see pressures below). Bled down well. Changed out equipment for 1-1/4" tubing. R/U floor. L/D 135 joints of 1-1/4" tubing and 1 joint of perforated 1-1/4" tubing. Changed out equipment for 2-3/8" work-string. P/U 5.5" scraper and TIH to 626'. Stopped work due to rain and lightning. Secured and shut in well for the day.

PLUG SUMMARY

<u>Plug No</u>	<u>Plug Depth</u>	<u>Sacks of Cement Used</u>
Plug 1	To _____	_____
Plug 2	To _____	_____
Plug 3	To _____	_____
Plug 4	To _____	_____
Plug 5	To _____	_____
Plug 6	To _____	_____
Plug 7	To _____	_____
Plug 8	To _____	_____
Plug 9	To _____	_____

BRIDGE PLUG/CEMENT RETAINER SUMMARY

Depth Set

WELL PRESSURES

Tubing _____ 0 psi
 Casing _____ 0 psi
 Bradenhead _____ 0 psi

P & A Daily Report



Company: Morningstar Operating
 Well Name: Sheets A #002
 API #: 30-039-06165
 Date: 8/17/2022

PO Box 538 Farmington, NM 87499 505.327.7301

WORK SUMMARY

Checked well pressures (see pressures below). Bled down well. P/U 2-3/8" work-string and continued to TIH with 5.5" casing scraper to 2780'. TOOH. Removed 5.5" casing scraper and installed 5.5" CR. TIH and set CR at 2724'. R/U cementing services. Attempted to circulate hole with 74 bbls but was unsuccessful. Pumped plug #1 from 2724' to approximately 2504' the cover the Pictured Cliffs perforations and formation top. R/D cementing services. TOOH. WOC 4 hours. TIH and tagged TOC at 2826'. TOOH. Secured and shut in well for the day. Received approval from John Ryza (Morningstar), Dustin Porch (BLM), and Monica Kuehling (OCD) to set another CR at 2674' and repump plug 1.

PLUG SUMMARY

<u>Plug No</u>	<u>Plug Depth</u>	<u>Sacks of Cement Used</u>
Plug 1	2880' To 2826'	25 sx of Type III
Plug 2	To	
Plug 3	To	
Plug 4	To	
Plug 5	To	
Plug 6	To	
Plug 7	To	
Plug 8	To	
Plug 9	To	

BRIDGE PLUG/CEMENT RETAINER SUMMARY

Depth Set
 2724' - failed

WELL PRESSURES

Tubing _____ 0 psi
 Casing _____ 0 psi
 Bradenhead _____ 0 psi

P & A Daily Report



Company: Morningstar Operating
 Well Name: Sheets A #002
 API #: 30-039-06165
 Date: 8/22/2022

PO Box 538 Farmington, NM 87499 505.327.7301

WORK SUMMARY

Checked well pressures (see pressures below). Bled down well. P/U CR. TIH. Set CR at 2685'. R/U Cementing services. Circulated with 70 bbls of fresh water. Attempted to pressure test but was unsuccessful. Pumped plug #2 from 2685' to 2504' to cover the Pictured Cliffs perforations and formation top. TOOH and WOC 4 hours. TIH and tagged the top of Plug #2 at 2480'. R/U wireline services and ran CBL from 2480' to surface. Results were sent to BLM and NMOCD for review. TIH with tubing to 2480'. R/U cementing services. The decision was made to extend plug #2 from 2480' to 1764' to cover the Fruitland, Ojo Alamo, and Kirtland formation tops. TOOH and WOC overnight. Shut in and secured well.

PLUG SUMMARY

<u>Plug No</u>	<u>Plug Depth</u>	<u>Sacks of Cement Used</u>
Plug 1	2880' To 2826'	25 sx of Type III
Plug 2	2658' To 1764'	87 sx of Type III
Plug 3		
Plug 4		
Plug 5		
Plug 6		
Plug 7		
Plug 8		
Plug 9		

BRIDGE PLUG/CEMENT RETAINER SUMMARY

Depth Set
 2724' - failed
 2685'

WELL PRESSURES

Tubing 0 psi
 Casing 0 psi
 Bradenhead 0 psi

P & A Daily Report



Company: Morningstar Operating
 Well Name: Sheets A #002
 API #: 30-039-06165
 Date: 8/24/2022

PO Box 538 Farmington, NM 87499 505.327.7301

WORK SUMMARY

Checked well pressures (see pressures below). Bled down well. TIH with 2-3/8" tag sub and tagged the top of plug #2 at 2080'. R/U cementing services. Re-pumped plug #2 from 2080' to 1764' to cover the Fruitland, Ojo Alamo, and Kirtland formation tops. TOOH and WOC 4 hours. TIH and tagged the top of plug #2 at 1761'. L/D 39 joints of 2-3/8" work string. R/U cementing services. Pumped plug #3 from 531' to 360' to cover the Nacimientos formation top. TOOH. WOC overnight. Shut in and secured well.

PLUG SUMMARY

<u>Plug No</u>	<u>Plug Depth</u>	<u>Sacks of Cement Used</u>
Plug 1	<u>2880'</u> To <u>2826'</u>	<u>25 sx of Type III</u>
Plug 2	<u>2658'</u> To <u>1761'</u>	<u>117 sx of Type III</u>
Plug 3	<u>532'</u> To <u>360'</u>	<u>20 sx of Type III</u>
Plug 4	<u> </u> To <u> </u>	<u> </u>
Plug 5	<u> </u> To <u> </u>	<u> </u>
Plug 6	<u> </u> To <u> </u>	<u> </u>
Plug 7	<u> </u> To <u> </u>	<u> </u>
Plug 8	<u> </u> To <u> </u>	<u> </u>
Plug 9	<u> </u> To <u> </u>	<u> </u>

BRIDGE PLUG/CEMENT RETAINER SUMMARY

<u>Depth Set</u>
<u>2724' - failed</u>
<u>2685'</u>
<u> </u>

WELL PRESSURES

Tubing	<u> </u>	<u>0 psi</u>
Casing	<u> </u>	<u>0 psi</u>
Bradenhead	<u> </u>	<u>0 psi</u>

P & A Daily Report



Company: Morningstar Operating
 Well Name: Sheets A #002
 API #: 30-039-06165
 Date: 8/26/2022

PO Box 538 Farmington, NM 87499 505.327.7301

WORK SUMMARY

Checked well pressures (see pressures below). Bled down well. TIH with 2-3/8" tag sub and tagged the top of plug #3 at 558'. Re-Pumped plug #3 from 558' to 360' to cover the Nacimiento formation top. L/D 8 joints and stood back 5 stands. WOC 4 hours. TIH with tubing to 407' but did not tag TOC. Sample cement on surface was still not cured. WOC an additional hour. Decision was made to shut down to WOC overnight. Shut in and secured well.

PLUG SUMMARY

<u>Plug No</u>	<u>Plug Depth</u>	<u>Sacks of Cement Used</u>
Plug 1	<u>2880' To 2826'</u>	<u>25 sx of Type III</u>
Plug 2	<u>2658' To 1761'</u>	<u>117 sx of Type III</u>
Plug 3	<u>558' To 360'</u>	<u>40 sx of Type III</u>
Plug 4	<u>To</u>	<u></u>
Plug 5	<u>To</u>	<u></u>
Plug 6	<u>To</u>	<u></u>
Plug 7	<u>To</u>	<u></u>
Plug 8	<u>To</u>	<u></u>
Plug 9	<u>To</u>	<u></u>

BRIDGE PLUG/CEMENT RETAINER SUMMARY

<u>Depth Set</u>
<u>2724' - failed</u>
<u>2685'</u>
<u></u>

WELL PRESSURES

Tubing	<u>0 psi</u>
Casing	<u>0 psi</u>
Bradenhead	<u>0 psi</u>

**MorningStar
Operating, LLC**

P&A WBD

Prepared by: JRyza
Date: 09/01/2022

KB = 10'
GL = 7,015'
API# 30-039-06165

Spud Date: 07/07/1956
Date Completed: 07/17/1956

**Sheets A 2
Rio Arriba County, NM**

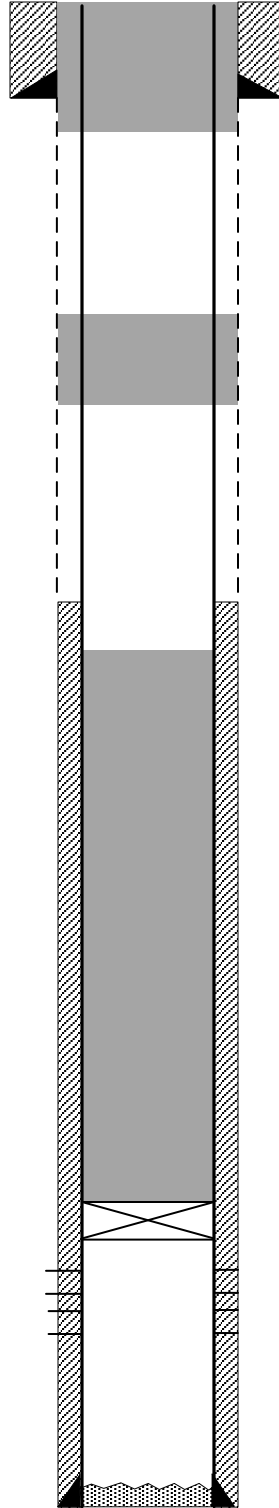
All depths include KB
TD - 2,925'; PBTD - 2,880'

Surface Csg: 3 jts 9-5/8" 25.4#
Setting Depth: 122'

Cement
125 sx Cement
Cmt circulated

Production Csg: 90 jts 5-1/2" 15.5# J-55
Setting Depth: 2925'

Cement:
150 sx cement
Temp survey 1800'



PLUG 4
Perf casing at 172'
84 sx cement 172' - surface

PLUG 3 (Nacimiento)
40 sx cement 330'-558'

PLUG 1&2 (PC, Fruitland, Kirtland, Ojo):
117 sx cement 1,761' - 2,685'

CICR set @ 2,685'

Picture Cliffs Perfs (1957):

Perfs 2,762' - 2,788' (4spf)
2,841' - 2,864' (4spf)

PBTD: 2,880'

Nacimiento - 460'
Ojo Alamo - 1,914'
Kirtland - 2,202'
Fruitland - 2,430'
Picture Cliffs - 2,762'

**ACOUSTIC CEMENT
 BOND LOG
 5.5" CASING**

Company	MORNINGSTAR OPERATING LLC	Company	MORNINGSTAR OPERATING LLC
Well	SHEETS A 2	Well	SHEETS A 2
Field	PICTURED CLIFFS	Field	PICTURED CLIFFS
County	RIO ARRIBA	County	RIO ARRIBA
State	NM	State	NM
Location:		API # :	30-039-06165
1840' FNL & 1498' FWL		Other Services	
Permanent Datum	SEC 06 TWP 25N RGE 06W	Elevation	
Log Measured From	GROUND LEVEL	K.B. 7025'	
Drilling Measured From	RKB 10' ABOVE PERM DATUM	D.F. 7024'	
	RKB	G.L. 7015'	

Date	08-22-2022						
Run Number	ONE						
Depth Driller	N/A						
Depth Logger	N/A						
Bottom Logged Interval	2481'						
Top Log Interval	SURF						
Open Hole Size	N/A						
Type Fluid	WATER						
Density / Viscosity	N/A						
Max. Recorded Temp.	N/A						
Estimated Cement Top	SEE LOG						
Time Well Ready	ROA						
Time Logger on Bottom	SEE LOG						
Equipment Number	550						
Location	FARMINGTON NM						
Recorded By	S. TILLEN						
Witnessed By	BRADFORD						
Borehole Record		Tubing Record					
From	Bit	From	To	Size	Weight	From	To
Casing Record	Size	Mgt/Ft	Top	Bottom			
Surface String	8.625"	32#	SURF	122'			
Production String	5.5	15.5	SURF	2925'			

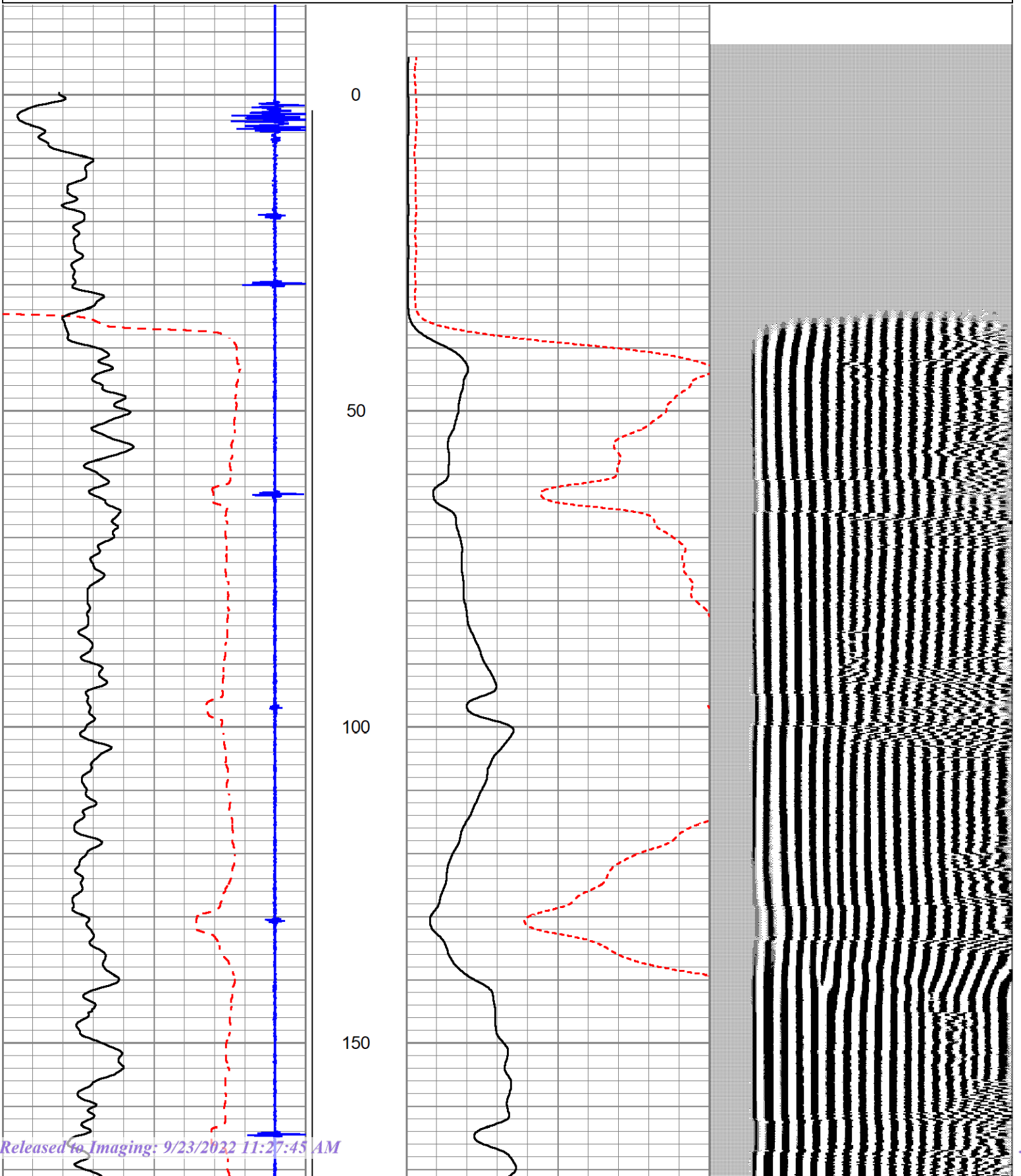
<<< Fold Here >>>

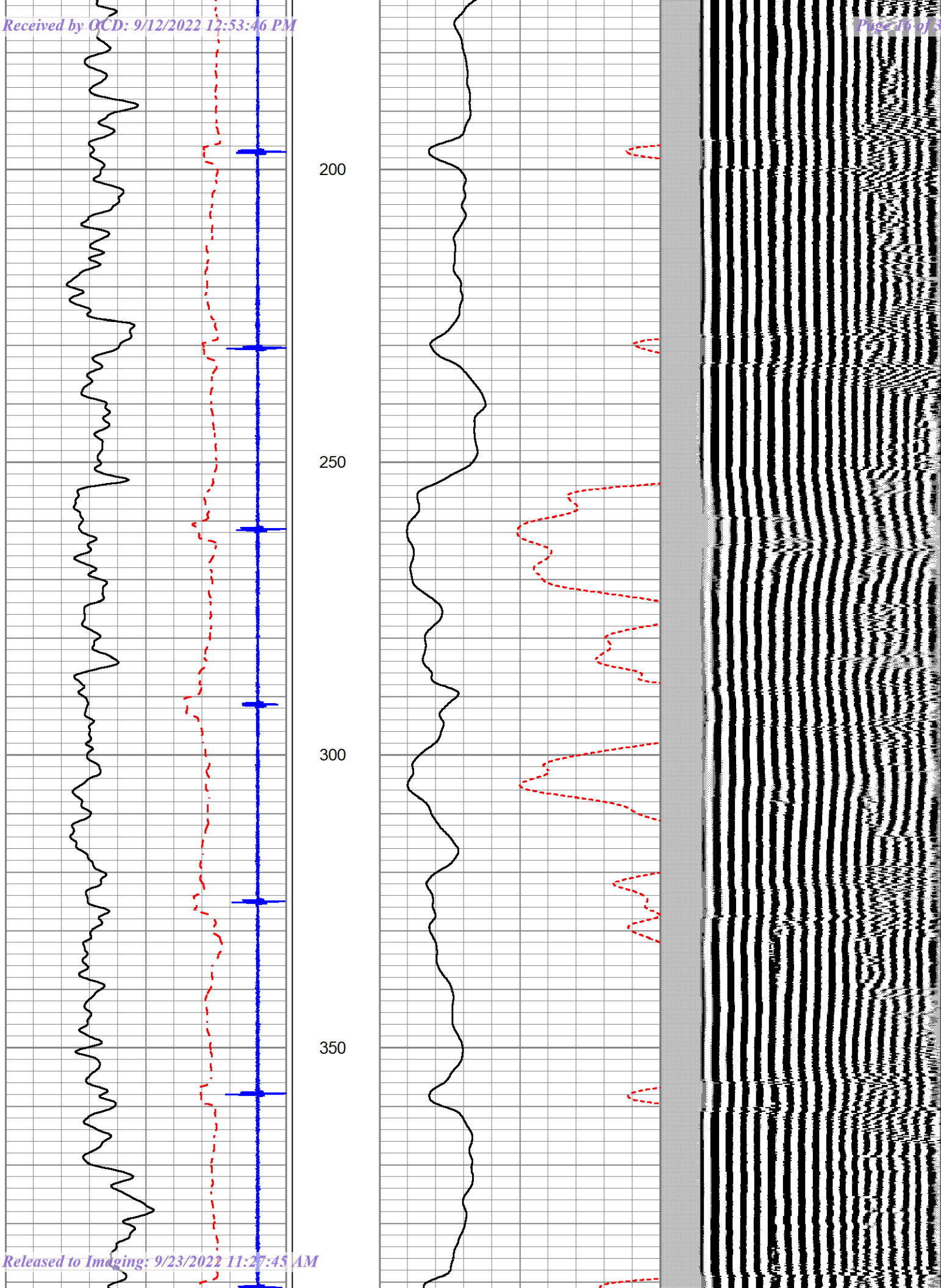
All interpretations are opinions based on inferences from electrical or other measurements and we cannot and do not guarantee the accuracy or correctness of any interpretation, and we shall not, except in the case of gross or willful negligence on our part, be liable or responsible for any loss, costs, damages, or expenses incurred or sustained by anyone resulting from any interpretation made by any of our officers, agents or employees. These interpretations are also subject to our general terms and conditions set out in our current Price Schedule.

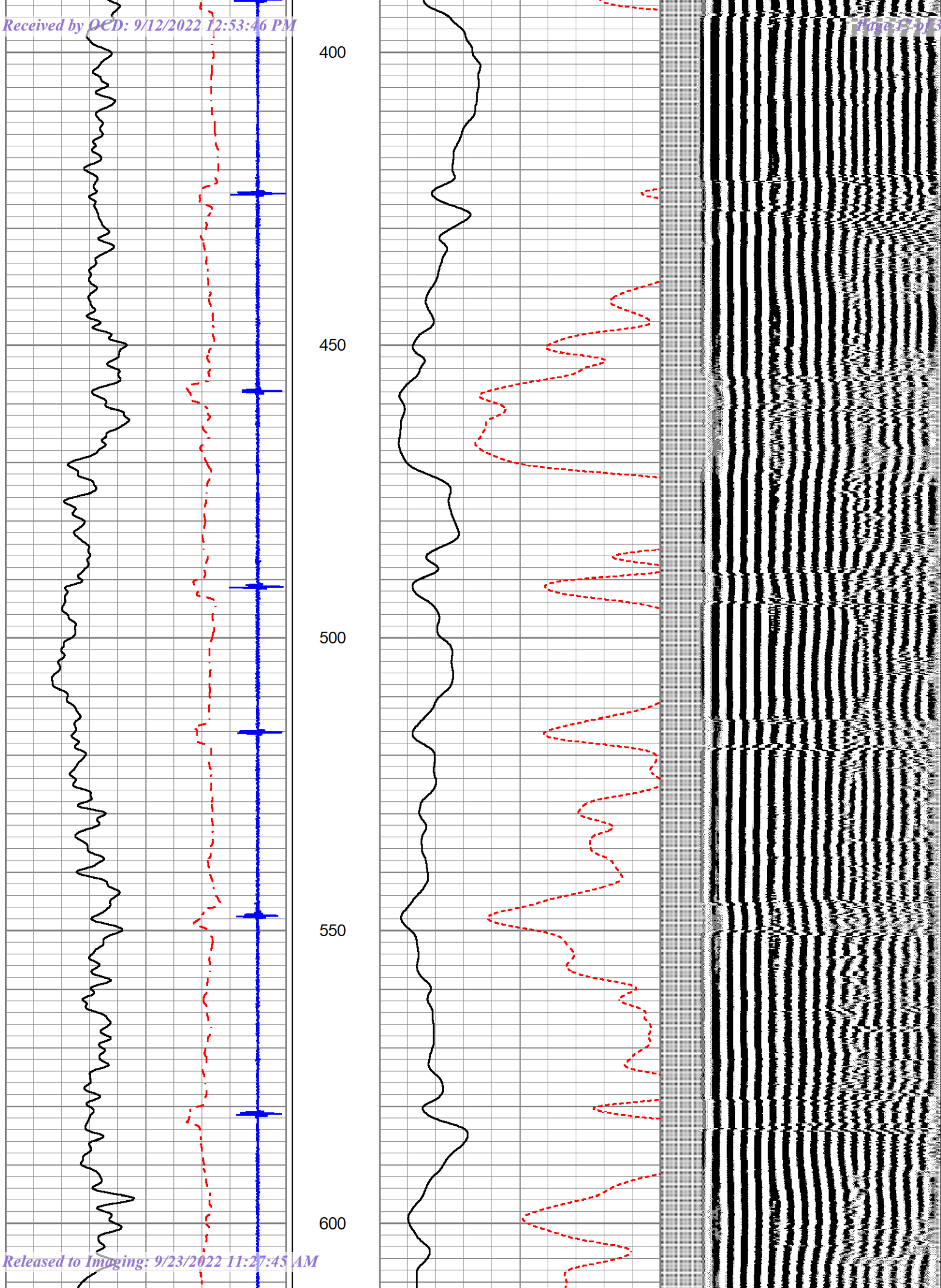
Comments

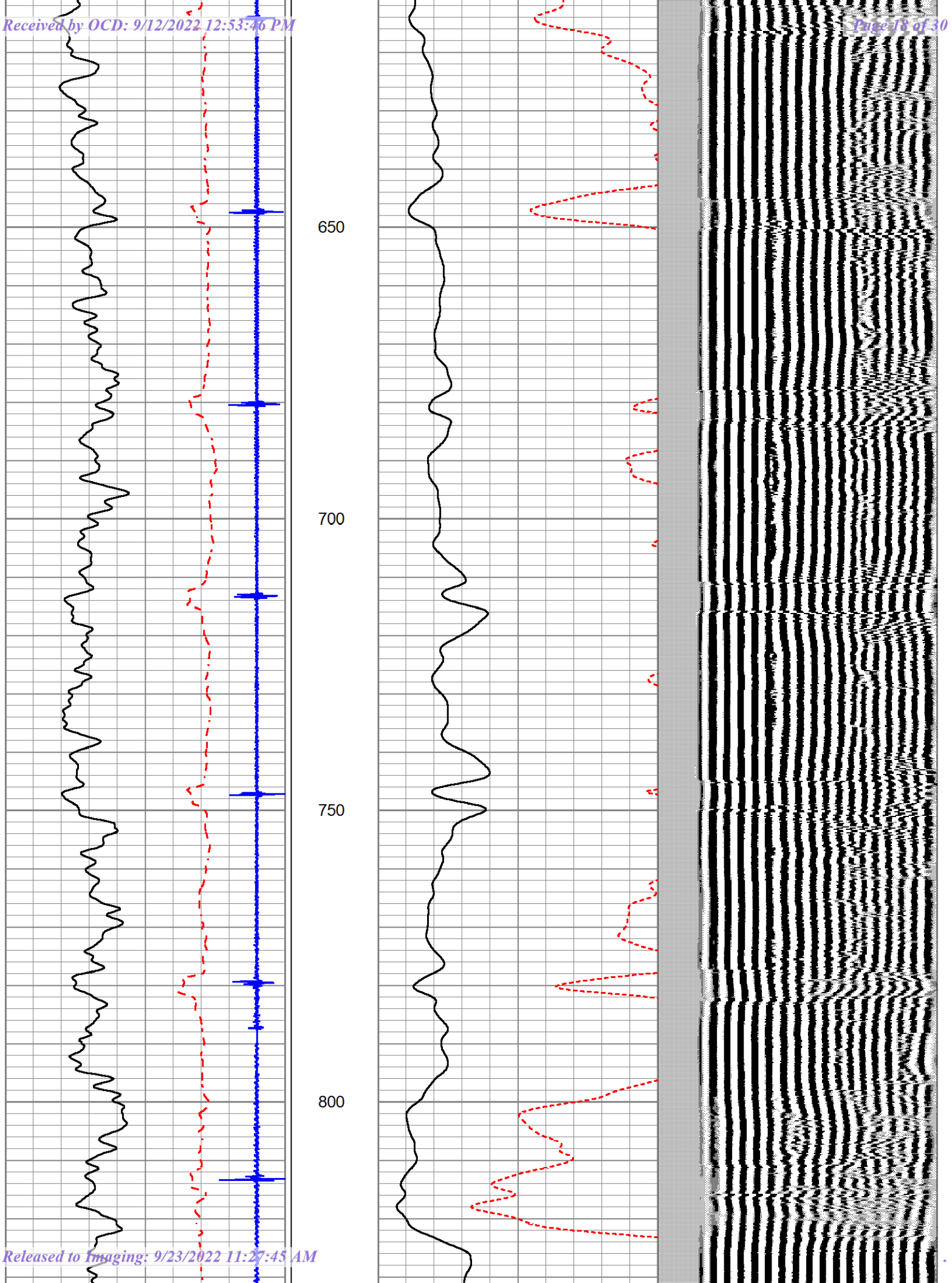
LOG WAS RAN ON WIRELINE MEASUREMENTS USING A 10' KB REPEAT AND MAIN PASS LOGGED WITH 0 PSI ON SURFACE

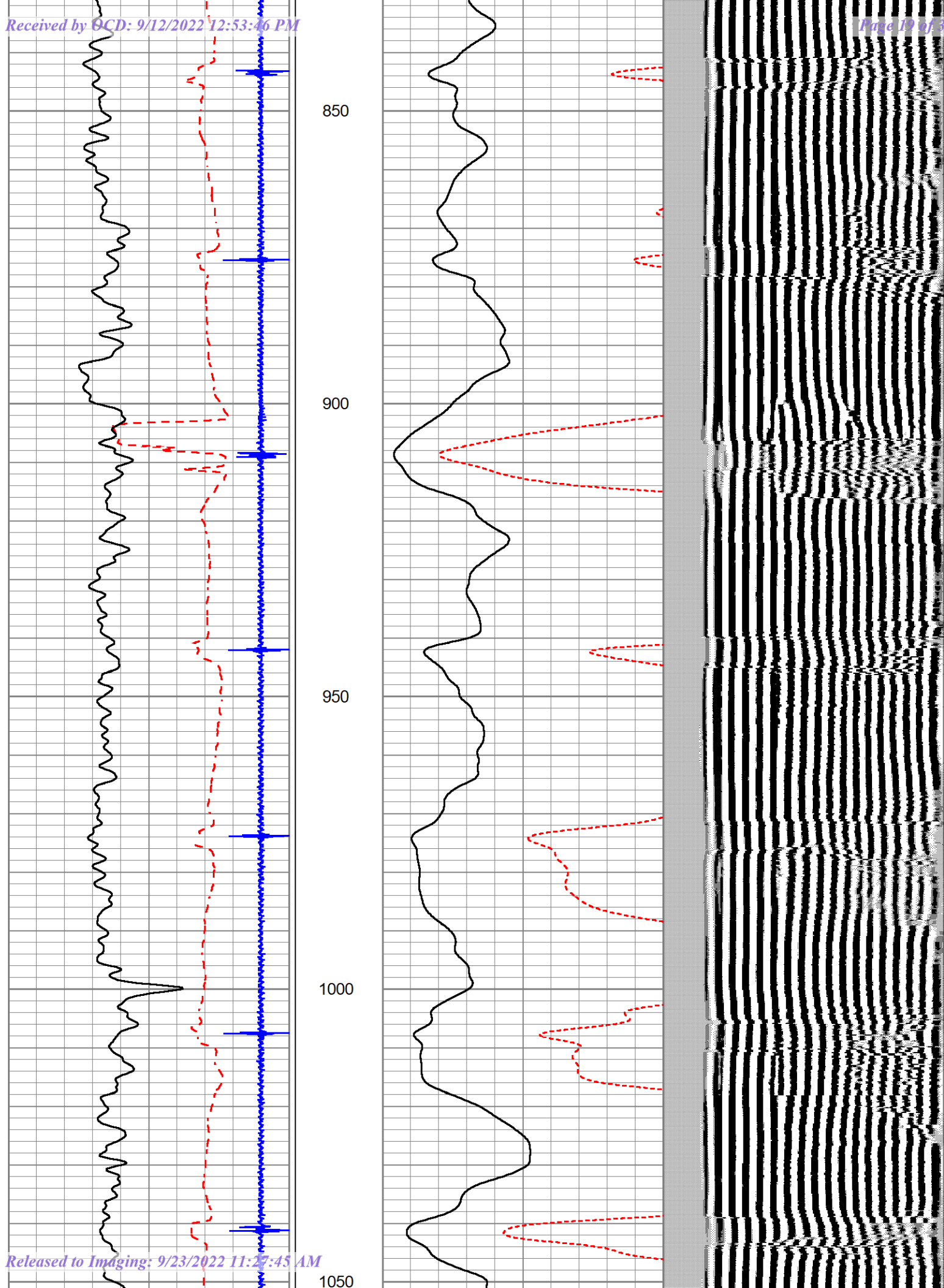
300	TT3FT (usec)	200	LTEN	AMP3FT X 5 (mV)	200	WVF5FT (usec)	1200
36	Collar Locator	-4	0	AMP3FT (mV)	100		
0	Gamma Ray	200					

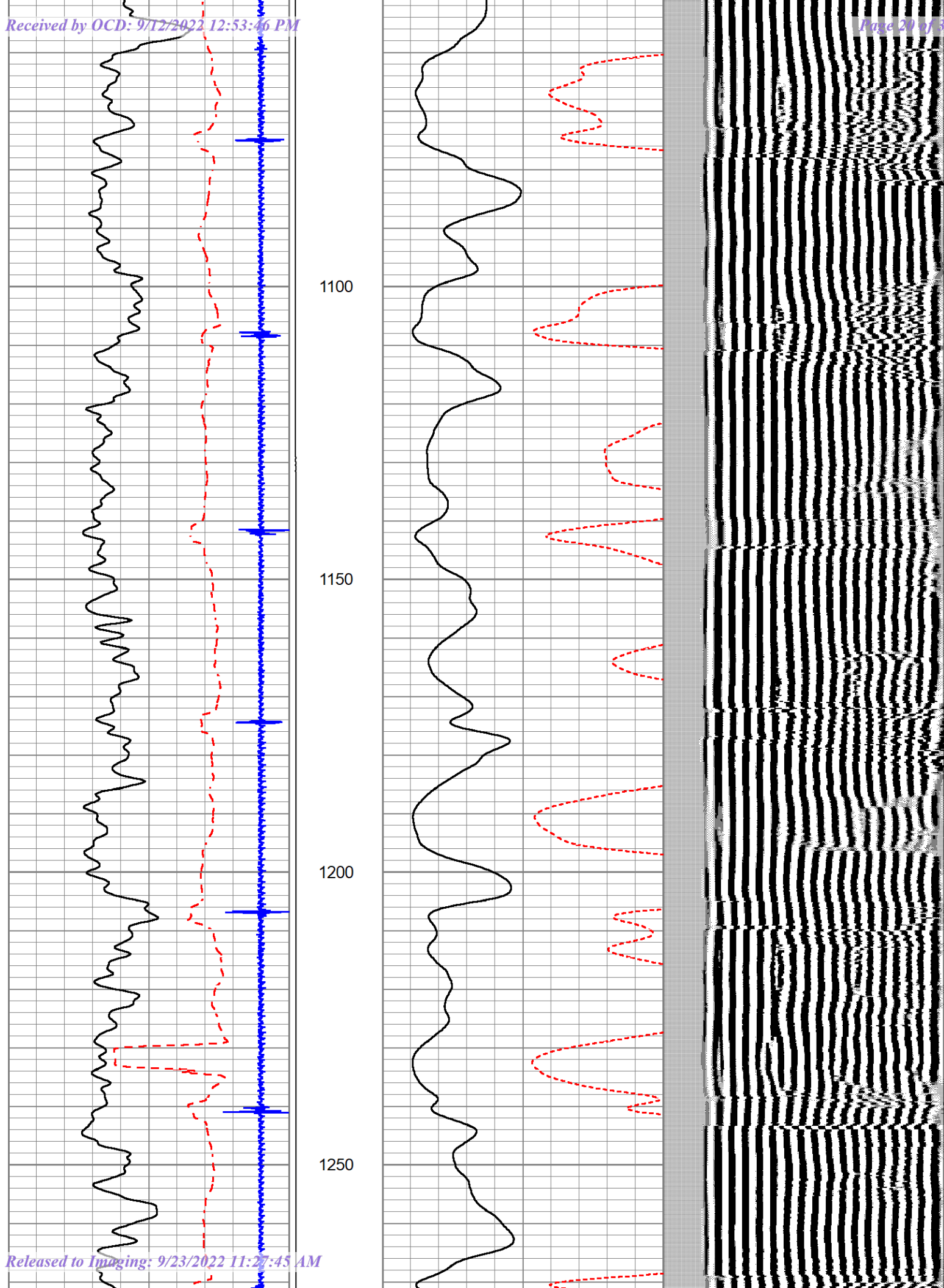


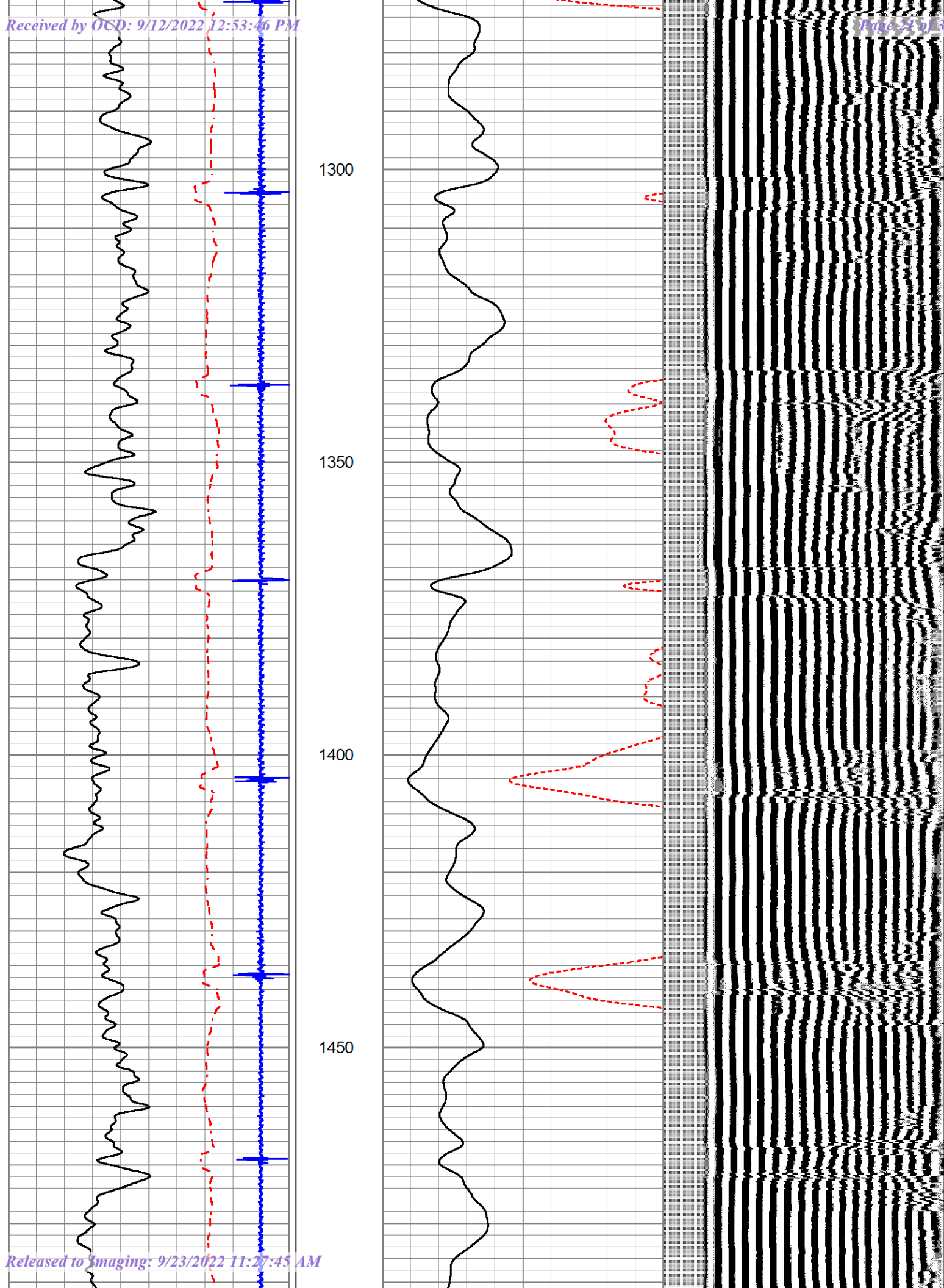


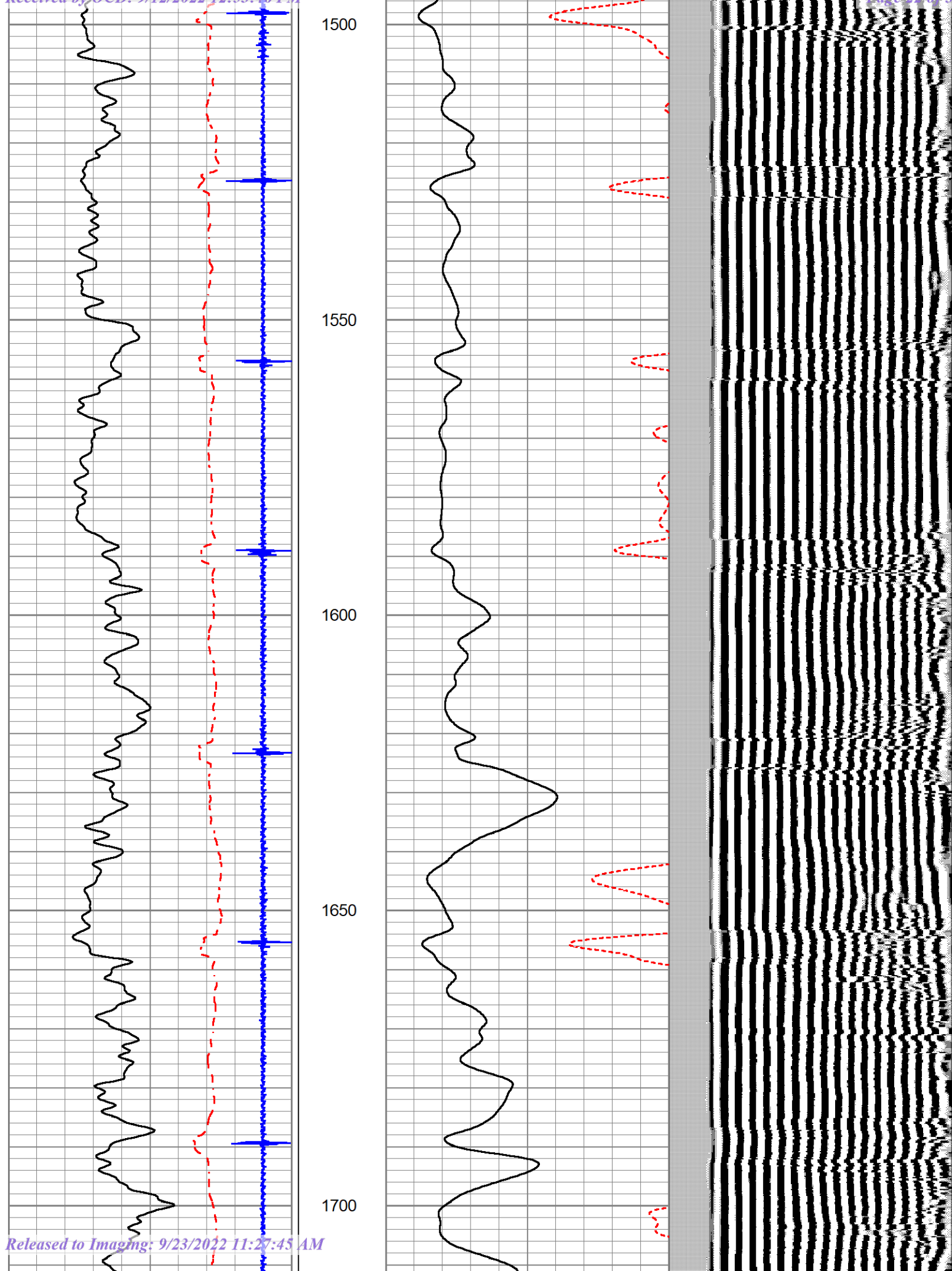


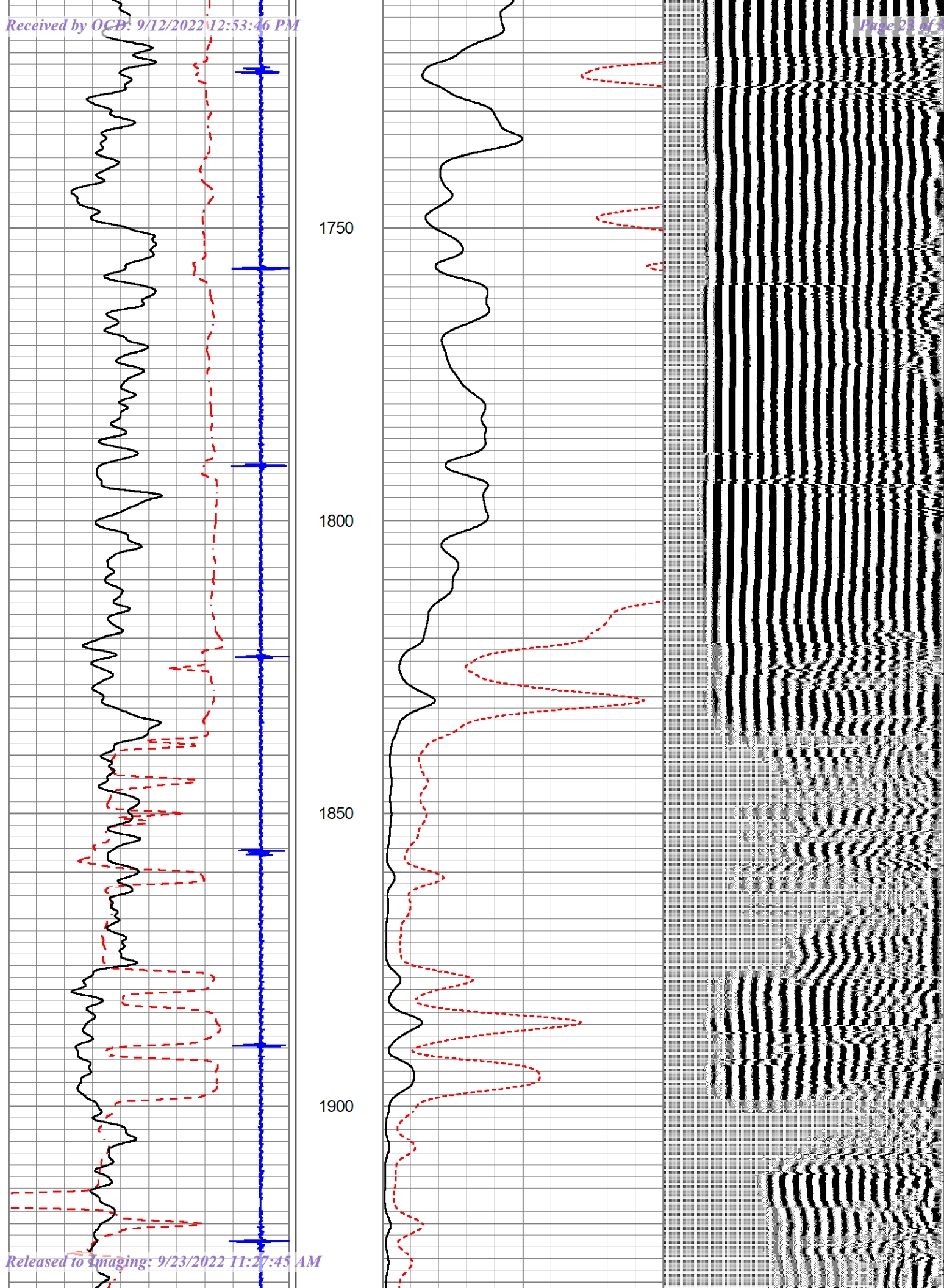


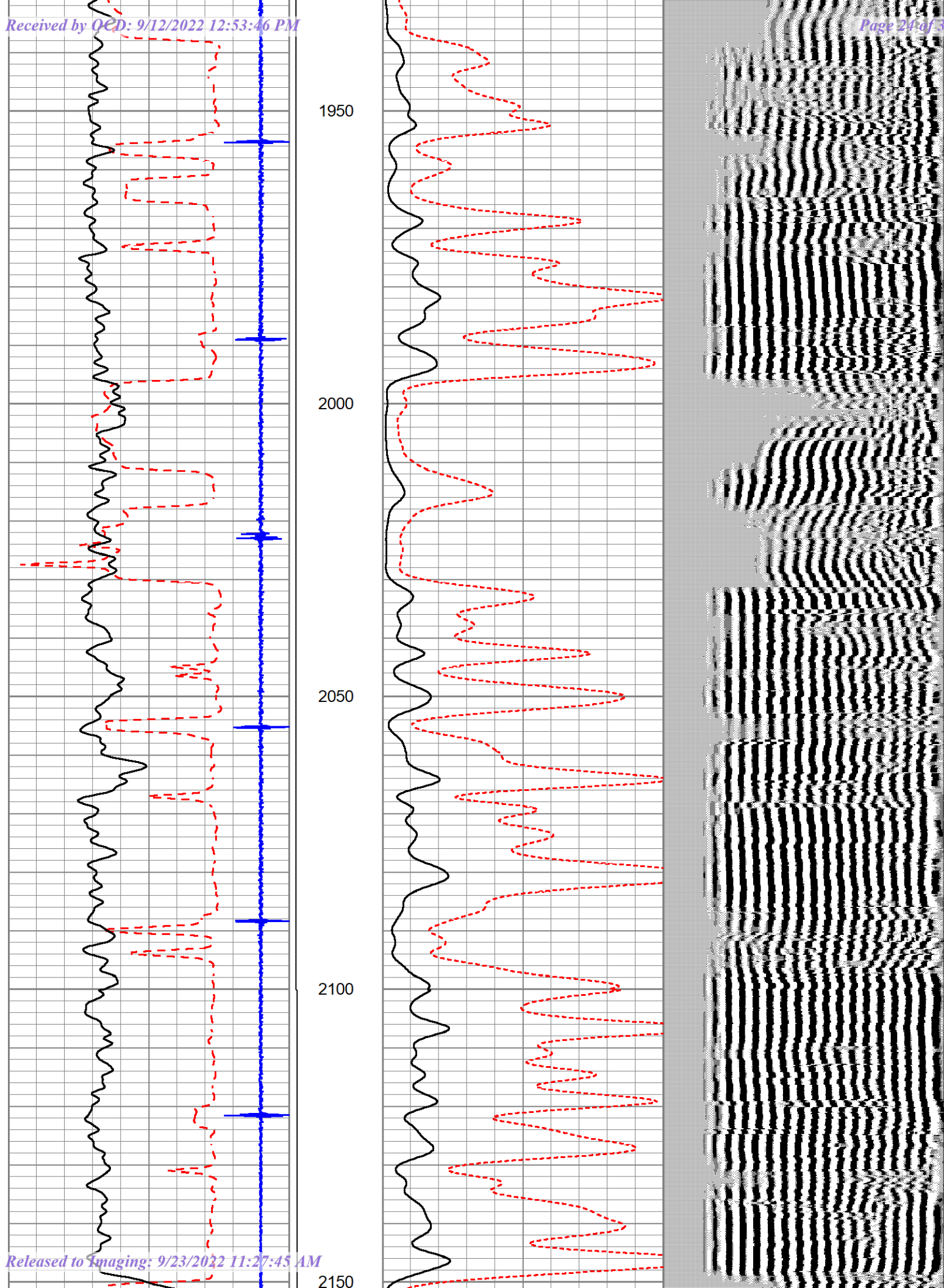


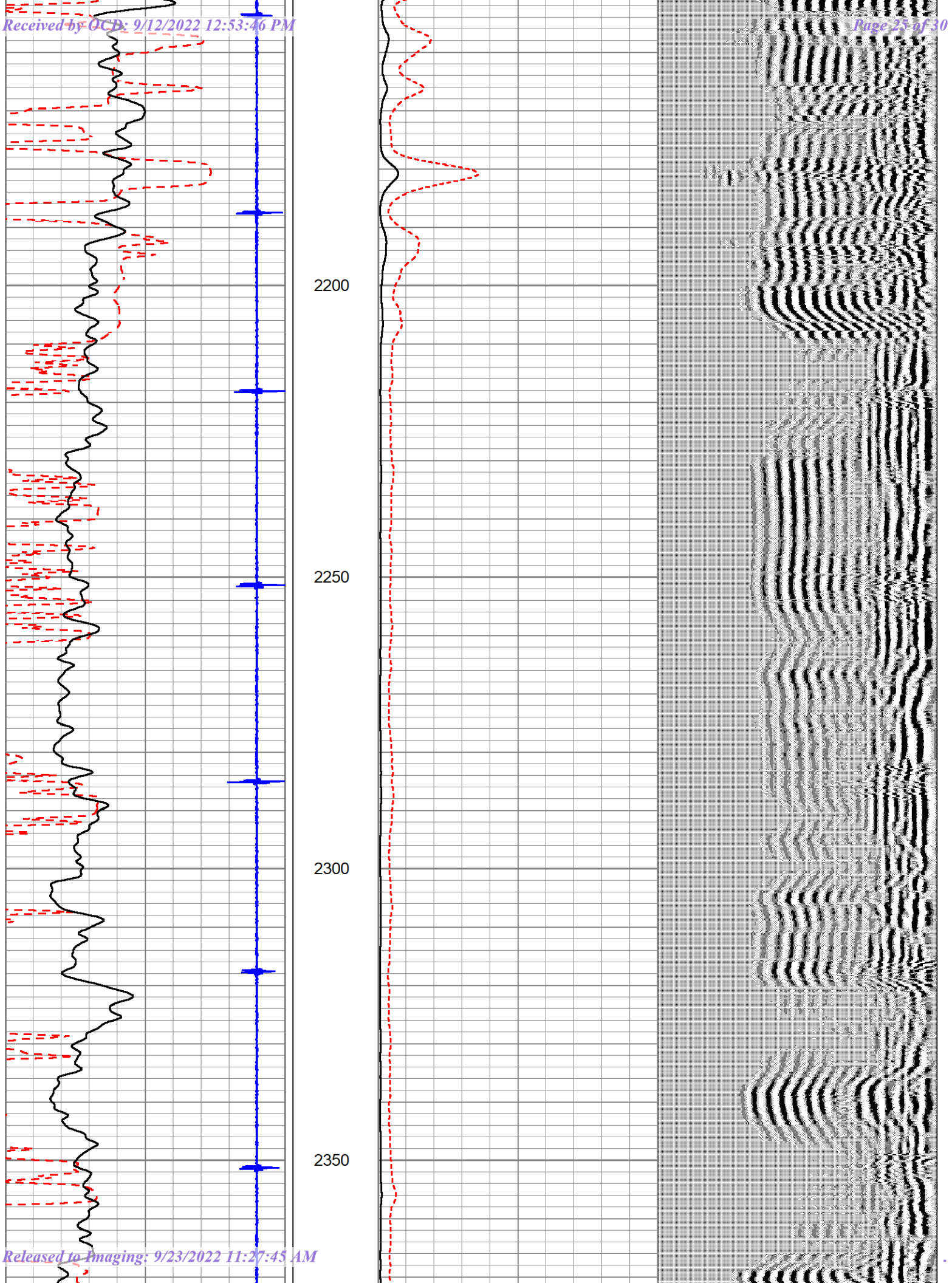


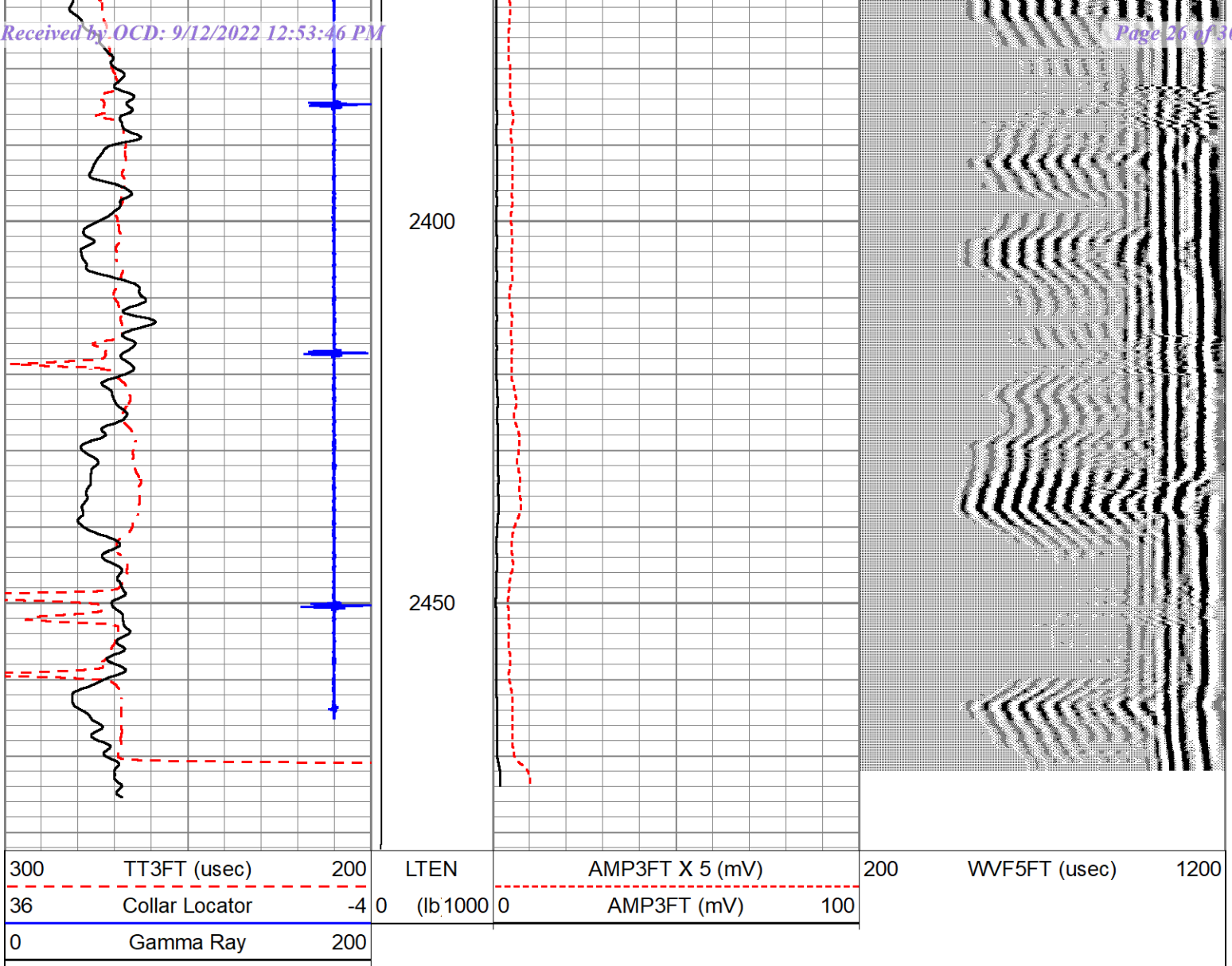












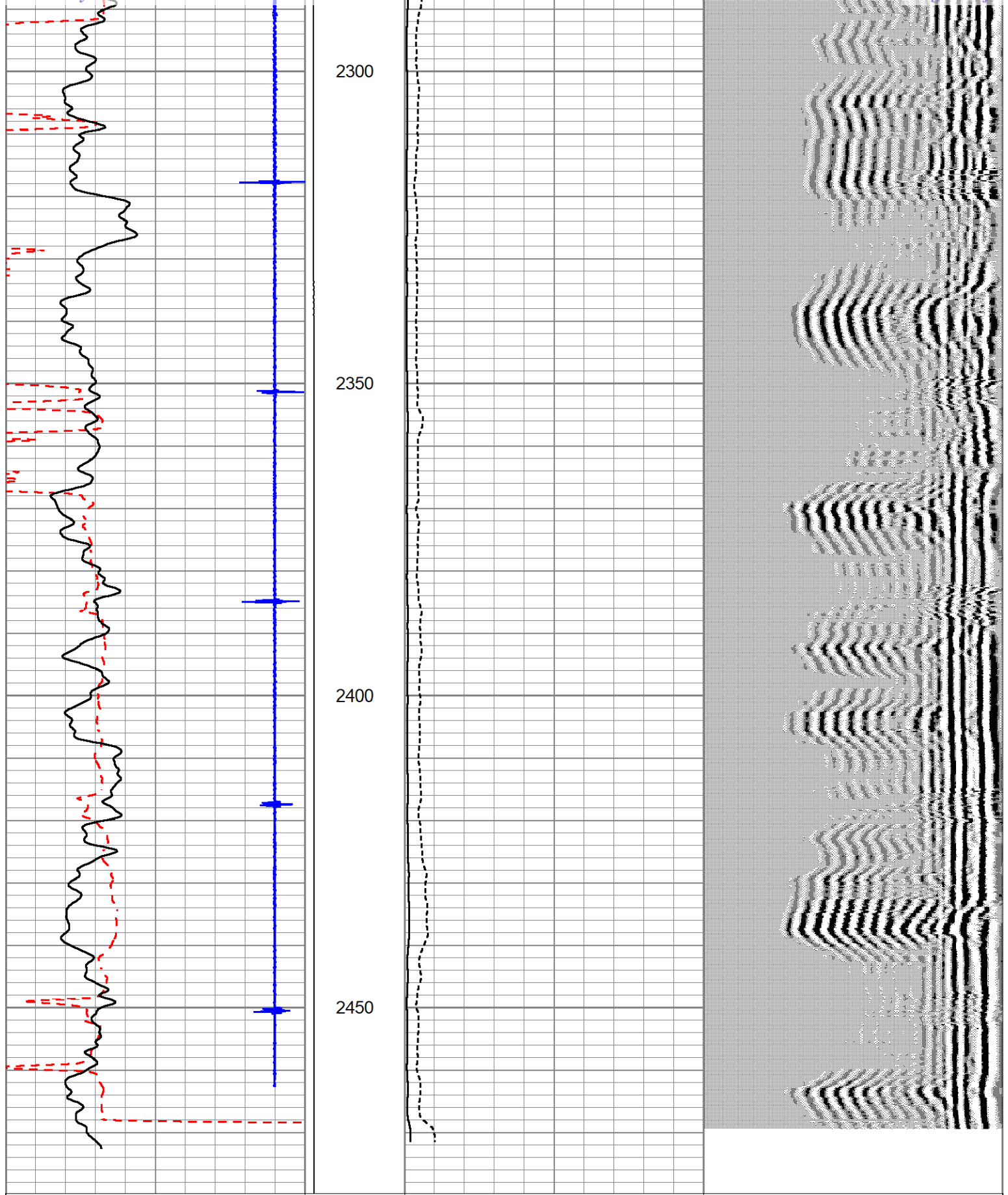
MAIN PASS



REPEAT PASS

Database File 08222022drake.db
 Dataset Pathname pass2
 Presentation Format scbl_dr
 Dataset Creation Mon Aug 22 13:21:22 2022
 Charted by Depth in Feet scaled 1:240

300	TT3FT (usec)	200	LTEN	AMP3FT X 20 (mV)	200	WVF5FT (usec)	1200
36	Collar Locator	-4	0 (lb 1000)	AMP3FT (mV)	100		
0	Gamma Ray	200					



300	TT3FT (usec)	200	LTEN	AMP3FT X 20 (mV)	200	WWF5FT (usec)	1200
36	Collar Locator	-4	(lb 1000)	AMP3FT (mV)	100		
0	Gamma Ray	200					

Sensor	Offset (ft)	Schematic	Description	Length (ft)	O.D. (in)	Weight (lb)	
			CHD-AES (000001) Cable Head	1.04	1.69	2.00	
			CENT-TTN2.75	3.00	2.75	5.00	
CCL	16.98		CCL-Titan (TTN_1) 2.75 TTN CCL	2.15	2.75	20.00	
WVF3FT	11.27			CBL-CBLTEKCO (TitanTekco1) Titan Tekco CBL	9.08	2.75	105.00
WVF5FT	10.27						
GR	4.44		GR-Titan (TTN_1) 275" TTN GR	4.02	2.75	77.00	
		CENT-TTN2.75	3.00	2.75	5.00		

set: 08222022drake.db: field/well/run1/pass2
Total length: 22.29 ft
Total weight: 214.00 lb
O.D.: 2.75 in

District I
 1625 N. French Dr., Hobbs, NM 88240
 Phone:(575) 393-6161 Fax:(575) 393-0720
District II
 811 S. First St., Artesia, NM 88210
 Phone:(575) 748-1283 Fax:(575) 748-9720
District III
 1000 Rio Brazos Rd., Aztec, NM 87410
 Phone:(505) 334-6178 Fax:(505) 334-6170
District IV
 1220 S. St Francis Dr., Santa Fe, NM 87505
 Phone:(505) 476-3470 Fax:(505) 476-3462

State of New Mexico
Energy, Minerals and Natural Resources
Oil Conservation Division
1220 S. St Francis Dr.
Santa Fe, NM 87505

CONDITIONS

Action 142439

CONDITIONS

Operator: MorningStar Operating LLC 400 W 7th St Fort Worth, TX 76102	OGRID: 330132
	Action Number: 142439
	Action Type: [C-103] Sub. Plugging (C-103P)

CONDITIONS

Created By	Condition	Condition Date
mkuehling	Well plugged 8/29/2022- Need to submit CBL separately	9/23/2022