

District I  
1625 N. French Dr., Hobbs, NM 88240  
Phone: (575) 393-6161 Fax: (575) 393-0720  
District II  
811 S. First St., Artesia, NM 88210  
Phone: (575) 748-1283 Fax: (575) 748-9720  
District III  
1000 Rio Brazos Road, Aztec, NM 87410  
Phone: (505) 334-6178 Fax: (505) 334-6170  
District IV  
1220 S. St. Francis Dr., Santa Fe, NM 87505  
Phone: (505) 476-3460 Fax: (505) 476-3462

State of New Mexico  
Energy, Minerals & Natural Resources Department  
OIL CONSERVATION DIVISION  
1220 South St. Francis Dr.  
Santa Fe, NM 87505

Form C-102  
Revised August 1, 2011  
Submit one copy to appropriate  
District Office  
☐ AMENDED REPORT

## WELL LOCATION AND ACREAGE DEDICATION PLAT

<sup>1</sup> API Number 30-025- <b>50641</b>	<sup>2</sup> Pool Code 97927	<sup>3</sup> Pool Name WC-025 G-07 S213330F; BONE SPRING
<sup>4</sup> Property Code <b>333291</b>	<sup>5</sup> Property Name Dagger SW 22-33-6 State Com	<sup>6</sup> Well Number #093H
<sup>7</sup> OGRID No. 372417	<sup>8</sup> Operator Name ADVANCE ENERGY PARTNERS HAT MESA LLC	<sup>9</sup> Elevation 3,612.31'

<sup>10</sup> Surface Location

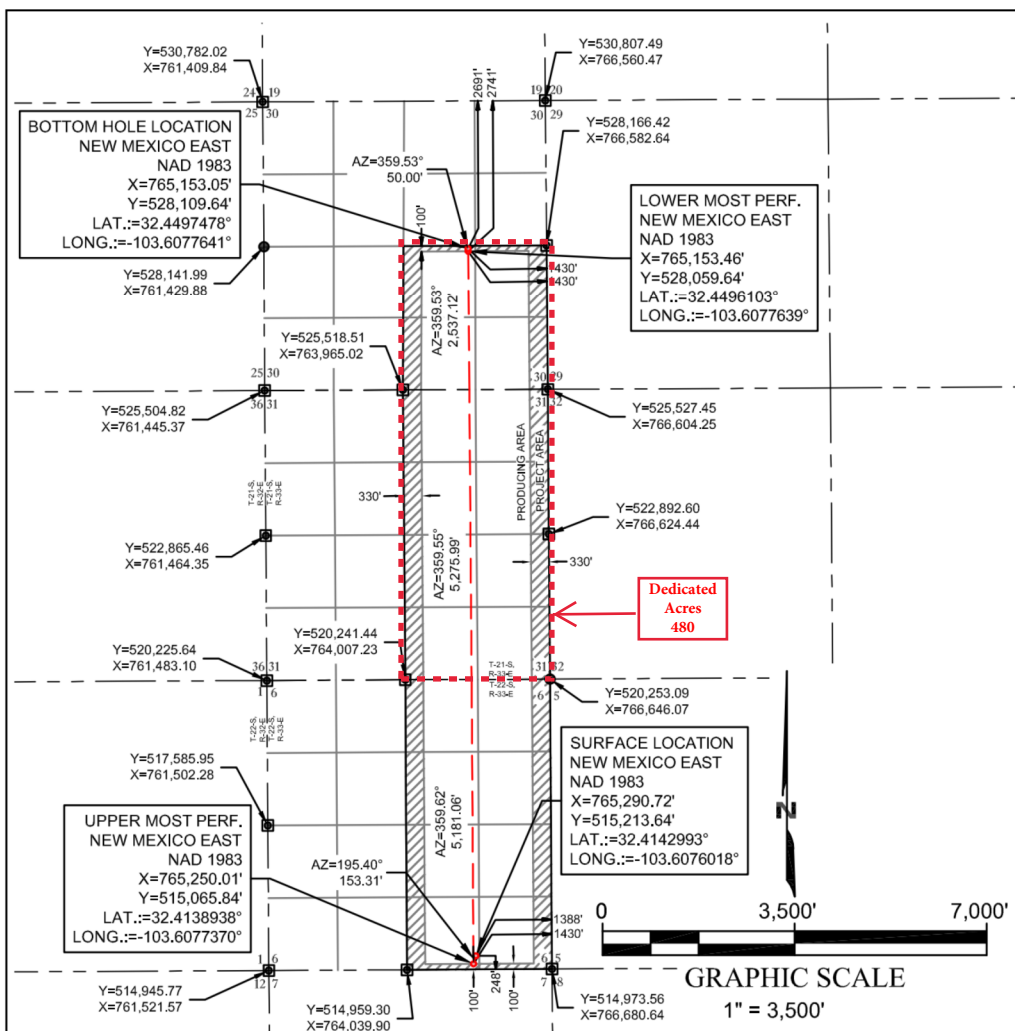
UL or lot no.	Section	Township	Range	Lot Idn	Feet from the	North/South line	Feet from the	East/West line	County
O	6	22-S	33-E	--	248'	SOUTH	1,388'	EAST	LEA

<sup>11</sup> Bottom Hole Location If Different From Surface

UL or lot no.	Section	Township	Range	Lot Idn	Feet from the	North/South line	Feet from the	East/West line	County
J	30	21-S	33-E	--	2,691'	NORTH	1,430'	EAST	LEA

<sup>12</sup> Dedicated Acres <b>480</b>	<sup>13</sup> Joint or Infill	<sup>14</sup> Consolidation Code C	<sup>15</sup> Order No.
---	-------------------------------	---------------------------------------	-------------------------

No allowable will be assigned to this completion until all interests have been consolidated or a non-standard unit has been approved by the division.

<sup>17</sup> OPERATOR CERTIFICATION

I hereby certify that the information contained herein is true and complete to the best of my knowledge and belief, and that this organization either owns a working interest or unleased mineral interest in the land including the proposed bottom hole location or has a right to drill this well at this location pursuant to a contract with an owner of such a mineral or working interest, or to a voluntary pooling agreement or a compulsory pooling order heretofore entered by the division.

Signature: *Floyd Hammond* Date: 9/7/2022

Floyd Hammond

Printed Name

fhammond@ameredev.com

E-mail Address

<sup>18</sup> SURVEYOR CERTIFICATION

I hereby certify that the well location shown on this plat was plotted from field notes of actual surveys made by me or under my supervision, and that the same is true and correct to the best of my belief.

08/10/2022

Date of Survey

Signature and Seal of Professional Surveyor

25779

Certificate Number



District I  
1625 N. French Dr., Hobbs, NM 88240  
Phone: (575) 393-6161 Fax: (575) 393-0720  
District II  
811 S. First St., Artesia, NM 88210  
Phone: (575) 748-1283 Fax: (575) 748-9720  
District III  
1000 Rio Brazos Road, Aztec, NM 87410  
Phone: (505) 334-6178 Fax: (505) 334-6170  
District IV  
1220 S. St. Francis Dr., Santa Fe, NM 87505  
Phone: (505) 476-3460 Fax: (505) 476-3462

State of New Mexico  
Energy, Minerals & Natural Resources Department  
OIL CONSERVATION DIVISION  
1220 South St. Francis Dr.  
Santa Fe, NM 87505

Form C-102  
Revised August 1, 2011  
Submit one copy to appropriate  
District Office  
☐ AMENDED REPORT

## WELL LOCATION AND ACREAGE DEDICATION PLAT

<sup>1</sup> API Number 30-025- <b>50641</b>	<sup>2</sup> Pool Code 37870	<sup>3</sup> Pool Name LEGG;BONE SPRING
<sup>4</sup> Property Code <b>333291</b>	<sup>5</sup> Property Name Dagger SW 22-33-6 State Com	<sup>6</sup> Well Number #093H
<sup>7</sup> OGRID No. 372417	<sup>8</sup> Operator Name ADVANCE ENERGY PARTNERS HAT MESA LLC	<sup>9</sup> Elevation 3,612.31'

<sup>10</sup> Surface Location

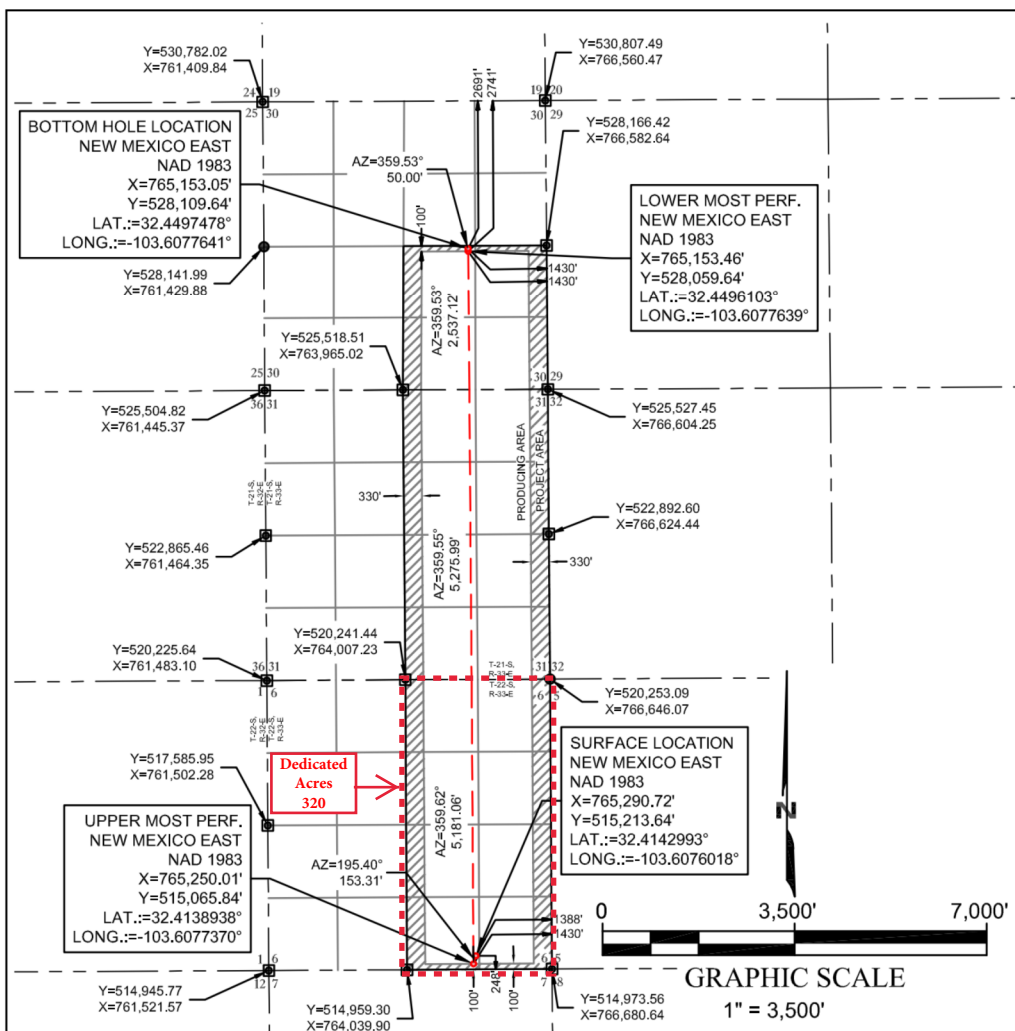
UL or lot no.	Section	Township	Range	Lot Idn	Feet from the	North/South line	Feet from the	East/West line	County
O	6	22-S	33-E	--	248'	SOUTH	1,388'	EAST	LEA

<sup>11</sup> Bottom Hole Location If Different From Surface

UL or lot no.	Section	Township	Range	Lot Idn	Feet from the	North/South line	Feet from the	East/West line	County
J	30	21-S	33-E	--	2,691'	NORTH	1,430'	EAST	LEA

<sup>12</sup> Dedicated Acres <b>320</b>	<sup>13</sup> Joint or Infill	<sup>14</sup> Consolidation Code C	<sup>15</sup> Order No.
---	-------------------------------	---------------------------------------	-------------------------

No allowable will be assigned to this completion until all interests have been consolidated or a non-standard unit has been approved by the division.

<sup>17</sup> OPERATOR CERTIFICATION

I hereby certify that the information contained herein is true and complete to the best of my knowledge and belief, and that this organization either owns a working interest or unleased mineral interest in the land including the proposed bottom hole location or has a right to drill this well at this location pursuant to a contract with an owner of such a mineral or working interest, or to a voluntary pooling agreement or a compulsory pooling order heretofore entered by the division.

*Floyd Hammond* 9/7/2022  
Signature Date

Floyd Hammond  
Printed Name

fhammond@ameredev.com  
E-mail Address

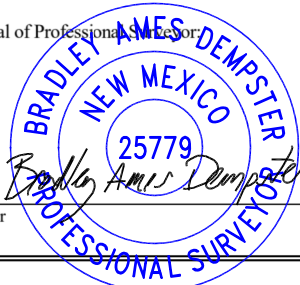
<sup>18</sup> SURVEYOR CERTIFICATION

I hereby certify that the well location shown on this plat was plotted from field notes of actual surveys made by me or under my supervision, and that the same is true and correct to the best of my belief.

08/10/2022  
Date of Survey

Signature and Seal of Professional Surveyor

25779  
Certificate Number



**District I**  
1625 N. French Dr., Hobbs, NM 88240  
Phone:(575) 393-6161 Fax:(575) 393-0720  
**District II**  
811 S. First St., Artesia, NM 88210  
Phone:(575) 748-1283 Fax:(575) 748-9720  
**District III**  
1000 Rio Brazos Rd., Aztec, NM 87410  
Phone:(505) 334-6178 Fax:(505) 334-6170  
**District IV**  
1220 S. St Francis Dr., Santa Fe, NM 87505  
Phone:(505) 476-3470 Fax:(505) 476-3462

**State of New Mexico**  
**Energy, Minerals and Natural Resources**  
**Oil Conservation Division**  
**1220 S. St Francis Dr.**  
**Santa Fe, NM 87505**

CONDITIONS

Action 146738

CONDITIONS

Operator: ADVANCE ENERGY PARTNERS HAT MESA, LLC 11490 Westheimer Rd., Ste 950 Houston, TX 77077	OGRID: 372417
	Action Number: 146738
	Action Type: [C-102] Well Location & Acreage Plat (C-102)

CONDITIONS

Created By	Condition	Condition Date
pkautz	None	9/28/2022