

110%

search report

U.S. Department of the Interior
BUREAU OF LAND MANAGEMENT

Sundry Print Report

10/21/2022

Well Name: UMT	Well Location: T31N / R14W / SEC 22 / TR J / NWSE / 36.530803 / -108.175257	County or Parish/State: SAN JUAN / NM
Well Number: 22-D	Type of Well: CONVENTIONAL GAS WELL	Allottee or Tribe Name: UTE MOUNTAIN UTE
Lease Number: 751051025	Unit or CA Name:	Unit or CA Number:
US Well Number: 300453342300S2	Well Status: Abandoned	Operator: EPIC ENERGY LLC

Subsequent Report

Sundry ID: 2698252

Type of Submission: Subsequent Report

Type of Action: Plug and Abandonment

Date Sundry Submitted: 10/14/2022

Time Sundry Submitted: 02:32

Date Operation Actually Began: 08/28/2022

Actual Procedure: Please see attached P&A procedure.

SR Attachments

Actual Procedure

SR_P_A_Ute_Mountain_Tribal_22_D_20221014143153.pdf

110%

search report

Well Name: UMT	Well Location: T31N / R14W / SEC 22 / TR J / NWSE / 36.530803 / -108.175257	County or Parish/State: SAN JUAN / NM
Well Number: 22-D	Type of Well: CONVENTIONAL GAS WELL	Allottee or Tribe Name: UTE MOUNTAIN UTE
Lease Number: 751051025	Unit or CA Name:	Unit or CA Number:
US Well Number: 300453342300S2	Well Status: Abandoned	Operator: EPIC ENERGY LLC

Operator

I certify that the foregoing is true and correct. Title 18 U.S.C. Section 1001 and Title 43 U.S.C. Section 1212, make it a crime for any person knowingly and willfully to make to any department or agency of the United States any false, fictitious or fraudulent statements or representations as to any matter within its jurisdiction. Electronic submission of Sundry Notices through this system satisfies regulations requiring a

Operator Electronic Signature: SHAWNA MARTINEZ**Signed on:** OCT 14, 2022 02:32 PM**Name:** EPIC ENERGY LLC**Title:** Regulatory Tech**Street Address:** 332 RD 3100**City:** AZTEC**State:** NM**Phone:** (505) 327-4892**Email address:** SHAWNA@WALSHENG.NET**Field****Representative Name:****Street Address:****City:****State:****Zip:****Phone:****Email address:****BLM Point of Contact****BLM POC Name:** JOE D KILLINS**BLM POC Title:** Petroleum Engineer**BLM POC Phone:** 9703851363**BLM POC Email Address:** jkillins@blm.gov**Disposition:** Accepted**Disposition Date:** 10/21/2022**Signature:** Joe Killins

Epic Energy, LLC

Ute Mountain Tribal 22-D

Date Completed

9/1/2022

Plug #	Formation	BLM Pick Formation Top	Perfs	CICR Depth	Cement Detail	Cement Plug Depths	Plug Position
1	Gallup	2840'	2667' - 3290'	2630'	14sx Type III cement (19.2cuft, 3.4bbl, 1.37yld, 14.6ppg, 6.64gps)	2485' - 2630'	Inside
2	Mancos	1762'	N/A	N/A	20sx Type III cement (27.4cuft, 4.9bbl, 1.37yld, 14.6ppg, 6.64gps)	1608' - 1825'	Inside
3	Mesaverde	1414'	1464'	1415'	54sx Type III cement (74cuft, 13.2bbl, 1.37yld, 14.6ppg, 6.64gps) 15sx on top of retainer, 6sx below CICR, inside csg, 33sx outside 5-1/2" csg	3463' - 3637'	Inside/Outside
4	Surface	Surface	427'	N/A	165sx Type III cement (224cuft, 40bbls, 1.37yld, 14.6ppg, 6.64gps)	Surface - 427'	Inside/Outside

SICP=25psi/SITP=0psi upon arrival. Pumping unit & production facilities have been removed. Rig anchors, tank berms and pumping unit gravel pad still remain. RU Hot oil truck to tbg, pressured up immediately, RD wait on rig. M/RU from Tacitus well (delayed due to air equipment on Tacitus well impeding move out). On location at 1130hrs. Unseat pump, LD polished, 2ea 6' & 1ea 8' pony rods and 1ea 3/4" guided rod, showing heavy paraffin. Picked up polished rod. RU Kelly's Oilfield Service Hot oil truck and cleared paraffin from rod string with 20bbls of water at 250 degrees. TOH w/ rod string (22' polished rod w/ 8' liner, 2ea 6' & 1ea 8' pony rods, 30ea 3/4" guided, 95ea 3/4" plain rods, 4ea 1-1/2" sinker bars and a 2" x 1-1/4" x 8' x 12' RHAC pump). Hot oiled a 2nd time with 40 rods removed (25bbls water), csg circulated gas cut fluids. All rods & sinker bars looked ok. ND wellhead & BOP. Picked up 1jt and did not tag fill. LD extra jt and tally out with 102jts of 2-3/8" tbg, SN and a 30' cut-off MA (82jts in derrick, LD 20jts and MA on Double S trailer). EOT was 3305'KB, SN at 3275'KB, fill below 3330', bottom perf reported at 3290', perf interval is clear. Shut in well and SDON. Plan to round trip scraper and TIH with cement retainer tomorrow morning. Rig crew off location at 1900hrs. Rod Brashear with BLM (Durango Office) on location today, will return tomorrow morning to witness P&A procedures.

SICP/SITP=0psi upon arrival. Picked up a 4-3/4" rock bit, 5-1/2" Csg Scraper, bit sub and TIH to 2645'KB. Picked up a 5-1/2" CICR, SN and TIH on 82jts of 2-3/8" tbg. Set CICR at 2630'KB (Top perf reported at 2667'). RU Drake Cementing Services and loaded tbg with <1bbl of water, pressure test to 1100psi, good test. Sting out of retainer and est circulation with 3bbls of water. Shut in csg and attempted csg test, pumping into at 2bpm @ 200psi (7bbl of water). Check Braiden head valve (200psi), RU line to cement pit, bled pressure then BH started to kick oil out, fell to vent after approx 10 min. Pumped into csg at 2bpm and BH began to circulate after approx 5bbl, shut down. Closed BH valve and opened csg valve. Plug #1(CICR at 2630'KB), M&P 14sx of Type III cement w/ 2% CaCl₂ (19.2cuft, 3.4bbl, 14.6ppg, 1.37yld, 6.64gps), displaced with 9.25bbl water. LD 5jts of 2-3/8" tbg and TOH with stinger assembly. WOC 3hrs. Picked up a tag sub and RIH, tagged TOC at 2522'KB (108' of cement over CICR, good). LD tag jt, EOT at 2501'KB. Attempted csg test, pumping into. Mixed 16bbls of corrosion inhibited water, displaced w/ 6.7bbls of water. LD 21jts of 2-3/8" tbg. EOT at 1825'KB. Est. circulation. M&P 20sx of Type III cement (200' plug) (27.4cuft, 4.9bbl, 1.37yld, 14.6ppg, 6.64gps) w/ 2% CaCl₂, displaced with 6bbls of water. LD 7jts of 2-3/8" tbg, pull 1std, EOT at 1573'KB. Circulate csg clean and TOH with tag sub. Shut in well and SDON. Rig crew off location at 1700hrs. Rod Brashear with BLM (Durango Office) on location today, witness and approved all plugs/tags to date.

SICP/SITP=0psi upon arrival. Picked up a tag sub and RIH, tagged TOC at 1608'KB (217' cement plug: 1608'-1825', good). LD tag jt, EOT at 1605'KB. Attempted csg test, BH circulated. Spotted 3.5bbls Corrosion inhibited fluids. TOH w/ tbg. RU TWG wireline, RIH and shot 4 holes at 1464'KB (Correlated w/ CBL). Picked up a 5-1/2" CICR and RIH, set at 1415'KB. Sting out and attempted P/T csg, circulated BH, sting into retainer and circulated BH. Closed BH and pumped while still stung in, circulated csg. Holes below and above retainer. Shut in csg valve and left BH open. M&P 54sx of Type III cement and displaced w/ 1.5bbls of water, stung out out retainer, closed BH valve & opened csg valve and completed displacement of 4.5bbls (total) of water with corrosion inhibitor. TOH w/ tbg. Discussed with BLM, 3hr WOC is not necessary with the extra cement pumped and circulating annulus. RIH with 3-1/8" perf guns and shot 4 holes at 427' (Surf shoe at 377'). RD wireline. ND BOP and NU B-1 Adapter. RU to csg and pumped 125sx of Type III cement (171cuft, 30.5bbls, 1.37yld, 14.6ppg, 6.64gps). Returned cement to surf via braiden head valve, shut in valve with ~2bbls of slurry remaining in tub and squeezed into wellbore. Shut in well at 1400hrs. Dug out around wellhead. Welder on location at 1600hrs. Opened csg/BH valves, both on hard vacuum. Cut off well head, installed P&A marker. Gauged TOC at 16' inside 5-1/2" and 74' inside annulus. Topped off surface with 40sx (incl cellar reserve)(Total surface plug=165sx). RD DWS #32 and prepped to move to Johnston #1E tomorrow. Rig crew off location at 1800hrs. Rod Brashear with BLM (Durango Office) on location today, witness and approved all plugs/tags.

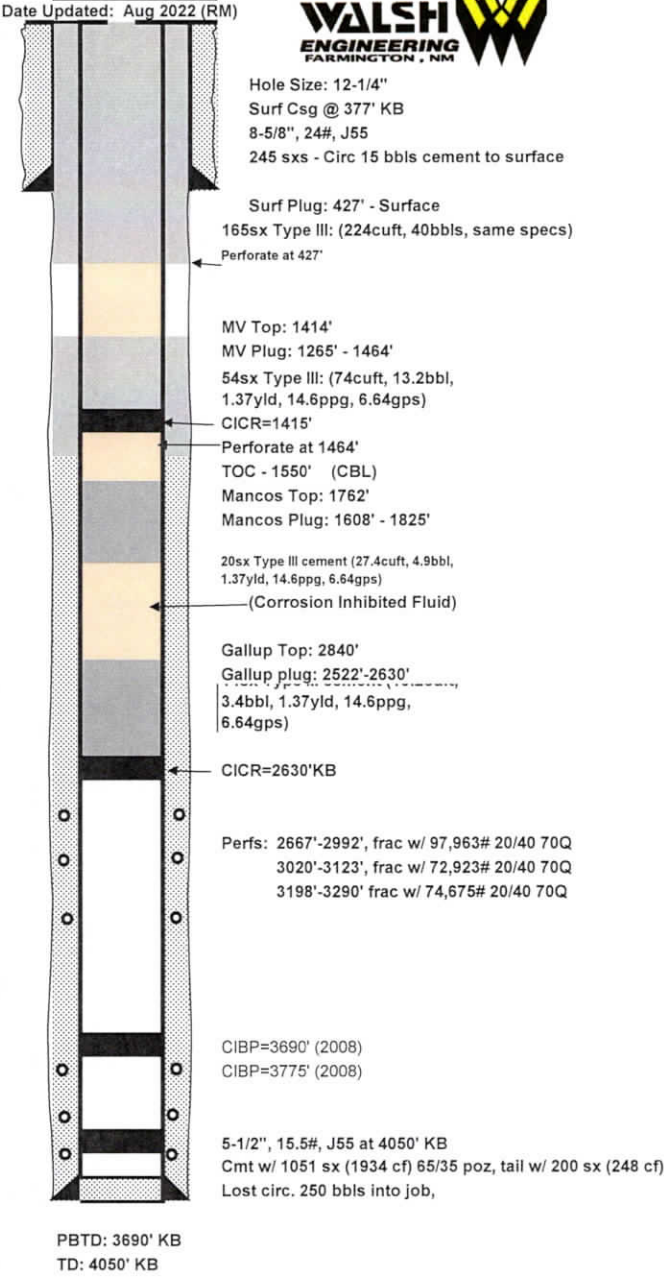
Cement around P&A marker had large crack, could feel warm temp rising through. Used 4 gas monitor and had zero readings. Most likely thermal reaction from curing cement. Rod Brashear with BLM (Durango Office) also observed with his gas monitor and came to the same conclusion. He will return Tuesday Sept 6th to verify all good. Moved DWS #32 to the Johnston #1E, rig released from UMT 22D at 1000hrs. M&R Trucking will pull 145bbl of fluids from cement pit, 160bbls from frac tank and return items to yard on first available trucking. FINAL REPORT.

Well/Facility:	Ute Mtn Tribal 22D	Well Status:	Producing
Operator:	EPIC Energy, LLC	Orig Oper:	Elk Petroleum
Lease/Op Agmt:	751-05-1025	KB:	12'
Field:	Verde Gallup	API #:	30-045-33423
County:	San Juan	GR/KB:	5667' (12' KB)
State:	NM	TD:	4050'
Spud:		PBTD:	3625'
Comp. Date:		WI:	100.00000%
1st Prod:		NRI:	81.25000%
Wellhead Conn:			
Surface Loc:	1990' FSL & 1545' FEL		
Sec-Twn-Rge:	Sec 22/T31N/14W		
Pumper:			
Foreman:	Jimmie McKinney		
Anchors Tested			
Notes:			

Date:	History:
December 5, 2002	Spud well & drill to 4050'
January 16, 2006	Complete Dakota Interval
April 27, 2006	Replaced split in 8-5/8" casing collar below wellhead
October 13, 2008	Complete Verde Gallup Interval
April 14, 2021	Stripping job & clean out - heavy drilling mud and formation cuttings. Landed tbg higher & attempt to pump
August 31, 2022	P&A Well

Deviation			
MD	Inclination		
288'	0.75		
347'	0.75		
757'	3.00		
1001'	3.00		
1134'	3.00		
1231'	3.00		
1732'	4.50		
1826'	4.00		
2168'	6.50		
2221'	7.00		
2334'	6.50		
2423'	8.00		
2518'	8.50		
2580'	8.50		
2770'	7.25		
2790'	5.00		
2890'	10.00		
2960'	10.00		
3054'	9.50		
3149'	9.25		
3240'	9.50		
3360'	10.00		
3440'	10.00		
3653'	11.25		
3748'	10.25		
3811'	10.00		
3874'	10.00		
3968'	10.00		
Gryo Survey ran 3/6/2006			

Geologic Markers	
MD	Formation
384'	Lewis
574'	Cliffhouse
708'	Menefee
	Menefee Coal
1414'	Point Lookout
1762'	Mancos
	Gallup Marker
2840'	Tocito
3022'	Sanostee
3048'	L. Mancos
3548'	Greenhorn
3602'	Graneros
3650'	Dakota
3784'	Burro Canyon
3928'	Morrison



Production Tubing Detail			
	Length	Top	Bottom
KB Adjustment	12.00		12.00
102 jts of 2-3/8"	3261.54		3273.54
Seating Nipple	1.10		3274.64
Mud Anchor (pinned, slotted, weep hole)	30.40		3305.04
			3305.04
LD 8/31/2022 (To Cave)			3305.04

Rod Detail -			
	Length	Top	Bottom
Pump Info			

Pumping Unit:		Gear Sheave:	
API Designation:		Stroke Length:	
Samson Post SN:		Gear Ratio:	
Gear Box SN:		SPM:	
Structural Unbalance:		Horse Power:	
Power:		Volts:	
Power SN:		Amps:	
Sheave Size:		Belts:	

District I
1625 N. French Dr., Hobbs, NM 88240
Phone:(575) 393-6161 Fax:(575) 393-0720
District II
811 S. First St., Artesia, NM 88210
Phone:(575) 748-1283 Fax:(575) 748-9720
District III
1000 Rio Brazos Rd., Aztec, NM 87410
Phone:(505) 334-6178 Fax:(505) 334-6170
District IV
1220 S. St Francis Dr., Santa Fe, NM 87505
Phone:(505) 476-3470 Fax:(505) 476-3462

State of New Mexico
Energy, Minerals and Natural Resources
Oil Conservation Division
1220 S. St Francis Dr.
Santa Fe, NM 87505

CONDITIONS

Action 152527

CONDITIONS

Operator: EPIC ENERGY, L.L.C. 332 Road 3100 Aztec, NM 87410	OGRID: 372834
	Action Number: 152527
	Action Type: [C-103] Sub. Plugging (C-103P)

CONDITIONS

Created By	Condition	Condition Date
mkuehling	No record of bradenhead pressures during plugging.	11/8/2022
mkuehling	Please incude dates on plugging reports	11/8/2022