

Well Name: CANYON LARGO UNIT	Well Location: T25N / R6W / SEC 12 / SWNW / 36.417114 / -107.42395	County or Parish/State: RIO ARRIBA / NM
Well Number: 154	Type of Well: CONVENTIONAL GAS WELL	Allottee or Tribe Name:
Lease Number: NMSF078884	Unit or CA Name: CANYON LARGO UNIT--CH	Unit or CA Number: NMNM78383B
US Well Number: 3003920278	Well Status: Abandoned	Operator: HILCORP ENERGY COMPANY

Subsequent Report

Sundry ID: 2702870

Type of Submission: Subsequent Report

Date Sundry Submitted: 11/14/2022

Date Operation Actually Began: 11/03/2022

Type of Action: Plug and Abandonment

Time Sundry Submitted: 12:12

Actual Procedure: The following well has been P&A'd as of 11/10/2022. Please see the attached plugging operations.

SR Attachments

Actual Procedure

CANYON_LARGO_UNIT_154_P_A_SR_WRITEUP_20221114121231.pdf

Well Name: CANYON LARGO UNIT	Well Location: T25N / R6W / SEC 12 / SWNW / 36.417114 / -107.42395	County or Parish/State: RIO ARRIBA / NM
Well Number: 154	Type of Well: CONVENTIONAL GAS WELL	Allottee or Tribe Name:
Lease Number: NMSF078884	Unit or CA Name: CANYON LARGO UNIT--CH	Unit or CA Number: NMNM78383B
US Well Number: 3003920278	Well Status: Abandoned	Operator: HILCORP ENERGY COMPANY

Operator

I certify that the foregoing is true and correct. Title 18 U.S.C. Section 1001 and Title 43 U.S.C. Section 1212, make it a crime for any person knowingly and willfully to make to any department or agency of the United States any false, fictitious or fraudulent statements or representations as to any matter within its jurisdiction. Electronic submission of Sundry Notices through this system satisfies regulations requiring a

Operator Electronic Signature: AMANDA WALKER
Signed on: NOV 14, 2022 12:12 PM
Name: HILCORP ENERGY COMPANY
Title: Operations/Regulatory Technician
Street Address: 1111 TRAVIS ST.
City: HOUSTON State: TX
Phone: (346) 237-2177
Email address: mwalker@hilcorp.com

Field

Representative Name:
Street Address:
City: State: Zip:
Phone:
Email address:

BLM Point of Contact

BLM POC Name: KENNETH G RENNICK
BLM POC Title: Petroleum Engineer
BLM POC Phone: 5055647742
BLM POC Email Address: krennick@blm.gov
Disposition: Accepted
Disposition Date: 11/14/2022
Signature: Kenneth Rennick

Canyon Largo Unit 154
30-039-20278
NMSF078884
SR P&A

11/3/2022: MIRU. CK WELL PRESSURES (BH 0 PSI, CSG 0 PSI). ND WH. NU BOPE & PT, GOOD TST. RU ELINE, RUN GAUGE RING T/3717'. RUN & SET CIBP @ 3708'. SDFN.

11/4/2022: CK WELL PRESSURES (BH 0 PSI, CSG 0 PSI). TIH T/620'. ROLL FLUID, ATTEMPT TO PT, FAIL. TOO. RUN CBL F/3708 T/SURF. ATTEMPT TO CONTACT CASEY ARNETT WITH BLM FOR CEMENT WITNESS, NO ANSWER TO CELL CALLS, ATTEMPT TO CONTACT VIRGIL LUCERO WITH BLM, NO ANSWER TO CELL PHONE, CONTACTED WANDA WEATHERFORD WITH BLM EXPLAINED SITUATION, SHE GAVE VERBAL PERMISSION TO PUMP PLUG, MIX AND PUMP 8 SKS CLASS G 1.15 FT/3 YIELD 15.8 PPG DENSITY, DISPLACE WITH 5.5 BBLS WATER. LD 1200' PIPE. SDFN.

11/7/2022: CK WELL PRESSURES (SICP- 0 PSI. SIBHP- 0 PSI). CASEY ARNETT/BLM ONSITE TO WITNESS PLUGGING OPERATIONS. TAG TOC PLUG 1 @ 3422'. PLUG GOOD FOR ONSITE BLM REP. ATTEMPT TO PT, TST FAILED. CMT PLUG 2 (OJO, KIRTLAND, F/C & P/C) 2,170' TO 2,935'). MIX & PUMPED 22 SACKS OF CLASS "G" CEMENT AT 15.8 PPG AT 1.15 FT3 YIELD. DISPLACED WITH 3.5 BBLS WATER. PUMP RATE MIN: 1.0 BPM. PUMP RATE MAX: 2.0 BPM. PUMP PSI MIN: 800 PSI. PUMP PSI MAX: 1,200 PSI. BBLS SLURRY: 4.6 BBLS. BBLS SLURRY INSIDE 2 7/8" CASING: 4.6 BBLS (+/- 794'). WOC. TAG CMT PLUG 2 @ 2215', WILL NEED TO ADD MORE CMT. CMT PLUG 2A (OJO, KIRTLAND, F/C & P/C) 2,170' TO 2,935'). MIX & PUMPED 4 SACKS OF CLASS "G" CEMENT AT 15.8 PPG AT 1.15 FT3 YIELD. DISPLACED WITH 3.0 BBLS WATER. PUMP RATE MIN: 1.0 BPM. PUMP RATE MAX: 2.0 BPM. PUMP PSI MIN: 800 PSI. PUMP PSI MAX: 1,200 PSI. BBLS SLURRY: 0.8 BBLS. BBLS SLURRY INSIDE 2 7/8" CASING: 0.6 BBLS (+/- 138'). SDFN.

11/8/2022: CK WELL PRESSURES (SICP- 0 PSI. SIBHP- 0 PSI). CASEY ARNETT/BLM ONSITE TO WITNESS PLUGGING OPERATIONS. ATTEMPT TO PT, TST FAILED. RU WL & RIH & PERF 3 – 0.23" DIA @ 1468'. RIH W/CICR & SET @ 1418'. MAKE UP CEMENT RETAINER STINGER AND TRIP INTO WELL WITH TUBING. BREAK CIRCULATION ABOVE RETAINER. ATTEMPT TO TEST 2 7/8" CASING ABOVE RETAINER. PUMPING INTO LEAK AT 1.0 BPM AT 500 PSI. STING INTO RETAINER AND PREPARE TO PUMP CEMENT PLUG #3. START INJECTION INTO CEMENT RETAINER. HAD FLUID CIRCULATION FROM CASING LEAK ABOVE CEMENT RETAINER. WILL NEED TO CHANGE PLUG #3 CEMENT AMOUNTS TO AVOID GETTING STUCK. CALL NM OCD (M.KUEHLING) AND TALKED ABOUT REDUCING CEMENT PLUG #3 AMOUNT. APPROVAL RECEIVED FROM NM OCD & NM BLM REP ONSITE. CEMENT PLUG #3 (NACIMIENTO) 1,056' TO 1,468'). MIX & PUMPED 36 SACKS OF CLASS "G" CEMENT AT 15.8 PPG AT 1.15 FT3 YIELD. DISPLACED WITH 1.8 BBLS WATER. PUMP RATE MIN: 1.0 BPM. PUMP RATE MAX: 2.0 BPM. PUMP PSI MIN: 800 PSI. PUMP PSI MAX: 1,200 PSI. BBLS SLURRY: 7.6 BBLS. BBLS SLURRY IN CASING/OPEN HOLE ANNULUS: 5.25 BBLS. BBLS SLURRY BELOW RETAINER: 0.3 BBLS (50'). BBLS SLURRY ABOVE RETAINER: 2.1 BBLS. SDFN.

11/9/2022: CK WELL PRESSURES (SICP- 0 PSI. SIBHP- 0 PSI). CASEY ARNETT/BLM ONSITE TO WITNESS PLUGGING OPERATIONS. TIH & TAG TOC @ 1119'. ATTEMPT TO PT, TST FAILED. RU WL & PERF 3 – 0.23" DIA HOLES @ 186'. CEMENT PLUG #4 (SURFACE PLUG) 10' TO 185'). MIX & PUMPED 59 SACKS OF CLASS "G" CEMENT AT 15.8 PPG AT 1.15 FT3 YIELD. PUMP RATE MIN: 1.0 BPM. PUMP RATE MAX: 2.0 BPM. PUMP PSI MIN: 800 PSI. PUMP PSI MAX: 1,200 PSI. BBLS SLURRY: 12.4 BBLS. BBLS SLURRY IN CASING/OPEN HOLE ANNULUS: 3.8 BBLS. BBLS SLURRY IN 2 7/8" X 8 5/8" CASING ANNULUS: 7.5 BBLS. BBLS SLURRY IN 2 7/8" CASING: 1.1 BBLS. TAG CMT @ 190', PERFS @ 185'. CEMENT PLUG #4A (SURFACE

Canyon Largo Unit 154
30-039-20278
NMSF078884
SR P&A

PLUG INSIDE CASING: 10' TO 190'). MIX & PUMPED 17 SACKS OF CLASS "G" CEMENT AT 15.8 PPG AT 1.15 FT3 YIELD. PUMP RATE MIN: 1.0 BPM. PUMP RATE MAX: 1.5 BPM. PUMP PSI MIN: 200 PSI. PUMP PSI MAX: 300 PSI. BBLS SLURRY: 3.6 BBLS. BBLS SLURRY IN 2 7/8" CASING: 3.6 BBLS. SDFN.

11/10/2022: CK WELL PRESSURES (SICP- 0 PSI. SIBHP- 0 PSI). CASEY ARNETT/BLM ONSITE TO WITNESS PLUGGING OPERATIONS. DIG OUT WH & CUT OFF. INSTALL DRY HOLE MARKER. MIX 17 SKS CLASS "G" CMT AT 15.8 PPG, 1.15 FT3 YIELD (3.6 BBLS) AND TOPPED OFF WELL AND FILLED CELLAR. RDRR @ 1200 HRS.

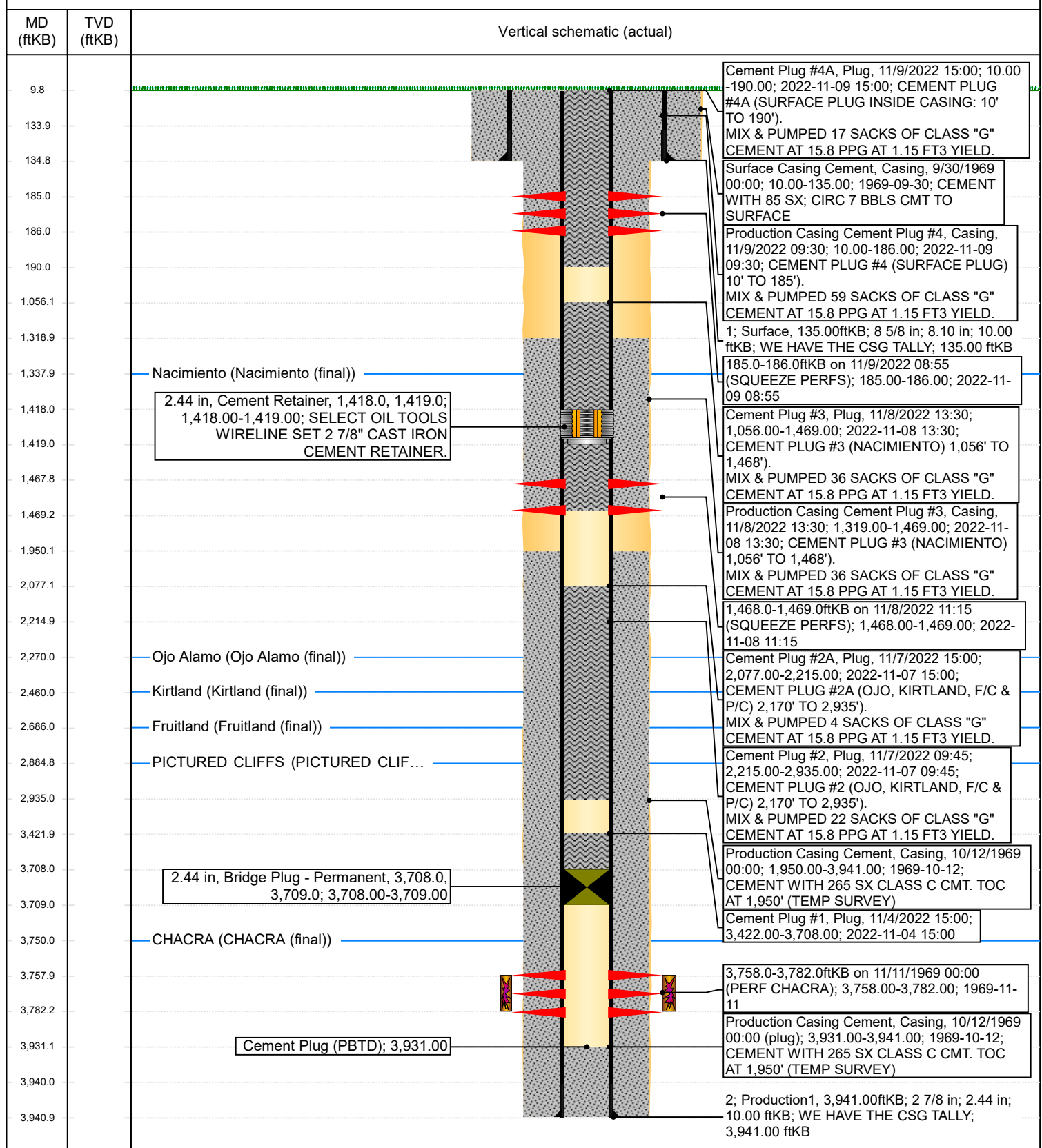


Current Schematic - Version 3

Well Name: CANYON LARGO UNIT #154

API / UWI 3003920278	Surface Legal Location 012-025N-006W-E	Field Name OTERO (CHACRA) GAS	Route 1405	State/Province NEW MEXICO	Well Configuration Type
Ground Elevation (ft) 6,785.00	Original KB/RT Elevation (ft) 6,795.00	KB-Ground Distance (ft) 10.00	KB-Casing Flange Distance (ft)	KB-Tubing Hanger Distance (ft)	

Original Hole



District I
1625 N. French Dr., Hobbs, NM 88240
Phone:(575) 393-6161 Fax:(575) 393-0720
District II
811 S. First St., Artesia, NM 88210
Phone:(575) 748-1283 Fax:(575) 748-9720
District III
1000 Rio Brazos Rd., Aztec, NM 87410
Phone:(505) 334-6178 Fax:(505) 334-6170
District IV
1220 S. St Francis Dr., Santa Fe, NM 87505
Phone:(505) 476-3470 Fax:(505) 476-3462

State of New Mexico
Energy, Minerals and Natural Resources
Oil Conservation Division
1220 S. St Francis Dr.
Santa Fe, NM 87505

COMMENTS

Action 158744

COMMENTS

Operator: HILCORP ENERGY COMPANY 1111 Travis Street Houston, TX 77002	OGRID: 372171
	Action Number: 158744
	Action Type: [C-103] Sub. Plugging (C-103P)

COMMENTS

Created By	Comment	Comment Date
mkuehling	well plugged 11/10/2022	11/29/2022
mkuehling	added more cement no tag required on ojo kirtland frtl pc 2a plug	11/29/2022

District I
1625 N. French Dr., Hobbs, NM 88240
Phone:(575) 393-6161 Fax:(575) 393-0720
District II
811 S. First St., Artesia, NM 88210
Phone:(575) 748-1283 Fax:(575) 748-9720
District III
1000 Rio Brazos Rd., Aztec, NM 87410
Phone:(505) 334-6178 Fax:(505) 334-6170
District IV
1220 S. St Francis Dr., Santa Fe, NM 87505
Phone:(505) 476-3470 Fax:(505) 476-3462

State of New Mexico
Energy, Minerals and Natural Resources
Oil Conservation Division
1220 S. St Francis Dr.
Santa Fe, NM 87505

CONDITIONS

Action 158744

CONDITIONS

Operator: HILCORP ENERGY COMPANY 1111 Travis Street Houston, TX 77002	OGRID: 372171
	Action Number: 158744
	Action Type: [C-103] Sub. Plugging (C-103P)

CONDITIONS

Created By	Condition	Condition Date
mkuehling	None	11/29/2022