

Well Name: SAN JUAN 30-5 UNIT	Well Location: T30N / R5W / SEC 9 / SWSW / 36.8219 / -107.36848	County or Parish/State: RIO ARRIBA / NM
Well Number: 49	Type of Well: CONVENTIONAL GAS WELL	Allottee or Tribe Name:
Lease Number: NMSF078997	Unit or CA Name: SAN JUAN 30-5 UNIT--DK, SAN JUAN 30-5 UNIT--MV	Unit or CA Number: NMNM78419A, NMNM78419B
US Well Number: 3003921830	Well Status: Abandoned	Operator: HILCORP ENERGY COMPANY

Subsequent Report

Sundry ID: 2702292

Type of Submission: Subsequent Report

Date Sundry Submitted: 11/10/2022

Date Operation Actually Began: 08/29/2022

Type of Action: Plug and Abandonment

Time Sundry Submitted: 08:50

Actual Procedure: The following well has been P&A'd as of 10/27/2022. Please see the attached plugging operations.

SR Attachments

Actual Procedure

SJ_30_5_UNIT_49_SR_P_A_WRITEUP_20221110085019.pdf

Well Name: SAN JUAN 30-5 UNIT	Well Location: T30N / R5W / SEC 9 / SWSW / 36.8219 / -107.36848	County or Parish/State: RIO ARRIBA / NM
Well Number: 49	Type of Well: CONVENTIONAL GAS WELL	Allottee or Tribe Name:
Lease Number: NMSF078997	Unit or CA Name: SAN JUAN 30-5 UNIT--DK, SAN JUAN 30-5 UNIT--MV	Unit or CA Number: NMNM78419A, NMNM78419B
US Well Number: 3003921830	Well Status: Abandoned	Operator: HILCORP ENERGY COMPANY

Operator

I certify that the foregoing is true and correct. Title 18 U.S.C. Section 1001 and Title 43 U.S.C. Section 1212, make it a crime for any person knowingly and willfully to make to any department or agency of the United States any false, fictitious or fraudulent statements or representations as to any matter within its jurisdiction. Electronic submission of Sundry Notices through this system satisfies regulations requiring a

Operator Electronic Signature: AMANDA WALKER

Signed on: NOV 10, 2022 08:50 AM

Name: HILCORP ENERGY COMPANY

Title: Operations/Regulatory Technician

Street Address: 1111 TRAVIS ST.

City: HOUSTONState: TX

Phone: (346) 237-2177

Email address: mwalker@hilcorp.com

Field

Representative Name:

Street Address:

City:State:Zip:

Phone:

Email address:

BLM Point of Contact

BLM POC Name: KENNETH G RENNICK

BLM POC Title: Petroleum Engineer

BLM POC Phone: 5055647742

BLM POC Email Address: krennick@blm.gov

Disposition: Accepted

Disposition Date: 11/10/2022

Signature: Kenneth Rennick

San Juan 30-5 Unit 49
30-039-21830
NMSF078997
SR P&A

8/29/2022: MIRU. CK WELL PRESSURES (SIBHP: 28 PSI, SIICP: 160 PSI, SICP: 420 PSI, SITP: 460 PSI). PMP 10 GAL H2S SCAVENGER DWN TBG. PMP 15 GAL DWN PROD CSG. PMP 5 GAL, DWN INT CSG, PMP 5 GAL DWN SURF CSG. SDFN. EMAIL SENT TO MONICA KUEHLING/NMOCD & KENNY RENNICK TO ADJUST APPROVED PROCEDURES TO PERF THE 4 ½" CSG RATHER THAN CUT AND PULL: UPDATE PLUG 6, 310' CMT INSIDE/OUTSIDE PLUG F/2819' T/3129'. PERFORATE CIRC HOLES IN 4 ½" @ 2659', EST CIRC UP 4 ½" X 7 ANNULUS. SET CIRC @ 2609'. UPDATE TO PLUG 7, 238' CMT INSIDE/OUTSIDE PLUG F/2421' T/2659'. PERF CIRC HOLES IN 4 ½" & 7" @ 1110'. PERF CIRC HOLES IN 4 ½" & 7" @ 420'. RECEIVED APPROVAL TO MOVE FORWARD.

8/30/2022: CK WELL PRESSURES (SIBHP: 28 PSI, SIICP: 140 PSI, SICP: 380 PSI, SITP: 380 PSI). NO H2S DETECTED. ND WH. NU BOP & FT, GOOD TST. WRK STUCK PIPE. CALC INDICATE STUCK @ PKR. SDFN

8/31/2022: CK WELL PRESSURES (SIBHP: 0 PSI, SIICP: 120 PSI, SICP: 320 PSI, SITP: 0 PSI). RU JET WEST, RUN FREEPOINT FOUND 100% FREE @ 5635'. DISCUSS FREEPOINT DEPTH W/MONICA KUEHLING/NMOCD & DARRELL PRIDDY/BLM, DECISION MADE TO MAKE AN ATTEMPT TO FISH OUT DUE TO MULTIPLE FORMATION TOPS UNDER PKR. CHEMICAL CUT @ 5629' (6' ABOVE COUPLING), PULL OUT OF HOLE MISSING CHEMICAL CUTTING TOOL, ELINE SHOWING SIGNS OF BEING MELTED, TBG STILL STUCK, HAD PRESSURE ON TBG WHILE CUTTING LOST PRESSURE RIGHT AFTER CUT, ASSUME PARTIAL CUT, WORK PIPE UNTIL FREE. RIG DOWN JET WEST, CUTTING TOOL NOT ON E-LINE. LD 180 JTS TBG. PU WASHOVER PIPE & RIH. SDFN.

9/1/2022: CK WELL PRESSURES (SIBHP: 0 PSI, SIICP: 60 PSI, SICP: 300 PSI). PU TBG T/3000'. UNLOAD WELL W/AIR. TAG 15' FILL ON TOP OF FISH. RU PWR SWVL. UNLOAD WELL W/AIR. TOO H W/30 STANDS TO BE ABV MV PERFS. SDFN.

9/2/2022: CK WELL PRESSURES (SIBHP: 0 PSI, SIICP: 60 PSI, SICP: 210 PSI). TIH TO TOF. PU GRAPPLE & OVERSHOT, TIH T/TOP OF MV PERFORATIONS. SDFN.

9/6/2022: CK WELL PRESSURES (SIBHP: 10 PSI, SIICP: 50 PSI, SICP: 350 PSI). TIH TO TOF @ 5618'. WORK OVERSHOT TO ENGAGE FISH, TOO H, NO FISH. PU WASH PIPE & PWR SWVL, BREAK CIRC @ 5600'. CO FILL F/5618' T/5660'. TOO H ABV MV PERFORATIONS. SDFN.

9/7/2022: CK WELL PRESSURES (SIBHP: 10 PSI, SIICP: 60 PSI, SICP: 300 PSI). TIH T/5654' TAG FILL. CO F/5654' T/5781'. TOO H AVB MV PERFORATIONS. SDFN.

9/8/2022: CK WELL PRESSURES (SIBHP: 5 PSI, SIICP: 60 PSI, SICP: 300 PSI). TIH TAG FILL @ 5776'. CO F/5776' T/5876'. TOP OF PKR @ 5876'. CIRC TOP OF PKR. TOO H ABV MV PERFORATIONS. SDFN.

9/9/2022: CK WELL PRESSURES (SIBHP: 5 PSI, SIICP: 60 PSI, SICP: 300 PSI). TIH TAG @ 5873'. JAR ON FISH. TOO H AVB MV PERFORATIONS. SDFN.

9/12/2022: CK WELL PRESSURES (SIBHP: 5 PSI, SIICP: 100 PSI, SICP: 300 PSI). TIH LATCHED FISH @ 5618' WRK FISH, NO MOVEMENT. RU WL RIH W/JET CUTTER. CUT TBG @ 5942', WRK FISH, NO MOVEMENT. TOO H. SDFN.

9/13/2022: CK WELL PRESSURES (SIBHP: 5 PSI, SIICP: 100 PSI, SICP: 200 PSI). RIH W/OVERSHOT. ENGAGE FISH. WRK & JAR FISH, NO MOVEMENT. SDFN.

San Juan 30-5 Unit 49
30-039-21830
NMSF078997
SR P&A

9/14/2022: CK WELL PRESSURES (SIBHP: 5 PSI, SIICP: 100 PSI, SICP: 150 PSI). RIH W/OVERSHOT. LATCH FISH @ 5816'. RU WL & CHEMICAL CUTTER. CUT PROD TBG @ 5881'. WRK CUT PIPE, RECOVERED 7 JTS. SDFN.

9/15/2022: CK WELL PRESSURES (SIBHP: 5 PSI, SIICP: 100 PSI, SICP: 1500 PSI). RIH W/OVERSHOT. BREAK CIRC & LATCH FISH. MOVED FISH UPHOLE 10'. TOO H W/6' CUT OFF PROD TBG & TOP OF PKR MANDREL. SDFN.

9/16/2022: CK WELL PRESSURES (SIBHP: 5 PSI, SIICP: 100 PSI, SICP: 200 PSI). RIH W/WASHOVER. BREAK CIRC. CIRC DWN TO FISH. MILL OVER FISH F/5871' T/5873'. SDFN.

9/19/2022: CK WELL PRESSURES (SIBHP: 5 PSI, SIICP: 350 PSI, SICP: 350 PSI). TIH. H2S MONITOR ALARM. RU ELEMENT CHEMICAL. PMP 10 GALS DWN CSG, 5 GAL DWN TBG & 5 GAL DWN INTERMEDIATE. SDFN.

9/20/2022: H2S PRESENT, KILL WELL W/30 BBLS. TIH W/12 STANDS. BREAK CIRC. TAG 20' FILL @ 5854'. WASH DWN TOF @ 5874'. KILL TBG W/10 BBLS, TOO H. RECEIVED APPROVAL FROM MONICA KUEHLING/NMOCD TO PROCEED W/P&A OPERATIONS. SDFN. FOLLOW UP EMAIL SENT TO MONICA KUEHLING/NMOCD & KENNY RENNICK/BLM TO SUMMARIZE PREVIOUS 15 DAY FISHING OPERATIONS. REQUEST TO SET CIRC @ 5870'. PLUG 1A, PMP FILL CSG VOL BELOW PKR + 100% = 50 BBLS CMT F/5870' T/7682'. PLUG 1B, STING OUT OF CIRC, SPOT 200' PLUG ABV CIRC F/5670' T/5870'. PLUG 2, INSIDE PLUG F/5050' T/5200' (ENSURES TOC BELOW LEWIS BOTTOM PERF @ 5032').

9/21/2022: CK WELL PRESSURES (SIBHP: 5 PSI, SIICP: 480 PSI, SICP: 500 PSI). FINISH TIH. TAG TOF @ 5874'. NO FILL. H2S MONITOR ALARMED. SWI. SAMPLE H2S. 3000 PPM IN PROD CSG. PMP 25 GALS SCAVENGER. WAIT 1 HR. OPEN WELL, SAMPLE H2S, 2000 PPM. SWI. PMP 25 GALS SCAVENGER. WAIT 1.5 HRS. SAMPLE H2S, 880 PPM. SWI. SDFN.

9/26/2022: CK WELL PRESSURES (SIBHP: 15 PSI, SIICP: 450 PSI, SICP: 450 PSI). H2S @ 880 PPM. LD FISHING STRING. RU WL & SET CIRC @ 5870'. SDFN.

9/27/2022: CK WELL PRESSURES (SIBHP: 15 PSI, SIICP: 480 PSI, SICP: 480 PSI). H2S @ 800 PPM. PU WRKSTRING. STING INTO CMT RETAINER @ 5870'. ATTEMPT TO EST INJECTION RATE, PMP 13 BBLS PRESSURED UP TO 1000 PSI, HELD PRESSURE FOR 10 MINS, STING OUT, PRESSURE DROPPED TO 0 PSI. POOH ABV MV PERFORATIONS. SDFN.

9/28/2022: CK WELL PRESSURES (SIBHP: 15 PSI, SIICP: 480 PSI, SICP: 480 PSI). H2S @ 2000 PPM. TIH & TAG 4' ABV CMT RETAINER. EST CIRC, CO TOP OF RETAINER. STING INTO CMT RETAINER, PRESSURE UP T/1500 PSI, NO BLEED OFF AFTER 10 MINS. BLEED DWN. PMP ADDITIONAL 70 BBLS H2O ATTEMPT TO FILL HOLE, NO RETURNS. RECEIVED APPROVAL F/MONICA KUEHLING/NMOCD TO PROCEED W/PLUGGING OPERATIONS. TOO H ABV MV PERFS. SDFN.

San Juan 30-5 Unit 49
30-039-21830
NMSF078997
SR P&A

9/29/2022: CK WELL PRESSURES (SIBHP: 15 PSI, SIICP: 200 PSI, SICP: 480 PSI). H2S @ 1000 PPM. DISCUSSED CURRENT OPS W/MONICA KUEHLING/NMOCD & DARRELL PRIDDY/BLM, APPROVAL GIVEN TO PROCEED WITH PLUGGING 200' PLUG ON TOP OF RETAINER SET @ 5870' W/100% EXCESS. MIX 31 BBLS CLASS G 1.15 YIELD, 15.8 PPG DENSITY, PUMP 1 BBL WATER AHEAD, PUMP CEMENT SLURRY DISPLACE WITH 10 BBLS WATER, PUMP TIME STARTED 10:15, WSL WITNESSED SLURRY DENSITY @ 15.8 PPG, WSL WITNESSED CEMENT PUMP JOB, DISPLACED WITH 10 BBLS WATER, PUMP TIME ENDED @ 10:30, PUMP TIMES VOLUMES AND CEMENT PROPERTIES ARE BEING TEXTED TO DARRELL PRIDDY/BLM. WOC 4 HRS. TIH & TAG TOC @ 5524'. TAG DEPTH TEXTED TO DARRELL PRIDDY/BLM. SDFN.

9/30/2022: CK WELL PRESSURES (SIBHP: 15 PSI, SIICP: 550 PSI, SICP: 550 PSI). H2S @ 1500 PPM. TO W/STINGER, PUMP 50 BBL KILL W/CONT PUMP IN WHILE PULLING RUBBER & STINGER DURING PULL LAST 5 STANDS, REMOVE STINGER INSTALL 4-1/2" CEMENT RETAINER RUN IN HOLE, KILL TBG/CSG W/50 BBL KILLS WHILE RUNNING FIRST 20 STANDS, INSTALL STRIPPING RUBBER, KILL TUBING W/5 BBLS H2O CONT TIH SET CIRC @ 5200'. STING OUT OF RETAINER. MIX AND PUMP 15 SKS CLASS G CEMENT 1.15 YIELD 15.8 PPG DENSITY, 8 BBLS DISPLACEMENT, BEGIN PUMPING 16:00 HRS, FINISH PUMPING 16:30 HRS, LAY DOWN 8 JOINTS, CEMENT PLUG FROM 5000' TO 5200'. TOO HIGH ABV LEWIS PERFS. SDFN.

10/3/2022: CK WELL PRESSURES (SIBHP: 30 PSI, SIICP: 680 PSI, SICP: 680 PSI). H2S @ 1000 PPM. TIH T/4631'. TAG TOC @ 4631' (369' TO HIGH). DISCUSSED W/MONICA KUEHLING/NMOCD & DARRELL PRIDDY/BLM. MONICA REQUESTED A CBL FROM TAG DEPTH T/SURF. BLM AGREED W/REQUEST. SDFN.

10/4/2022: CK WELL PRESSURES (SIBHP: 30 PSI, SIICP: 460 PSI, SICP: 460 PSI). H2S TO LOW TO MEASURE. RU ELINE. RUN 3/8" DEEP CHARGE PERF GUN 3 SHOTS, SHOOT PERFORATIONS @ 3828', POOH W/GUN, ALL SHOTS DETONATED, RD E-LINE. PU CIRC & SET @ 3848'. MIX AND PUMP 130 SKS CLASS G 1.15 YIELD 15.8 PPG CEMENT, PUMP 98 SKS BELOW RETAINER @ 700 PSI END PRESSURE BELOW RETAINER, STING OUT CLOSE PIPE RAMS PUMP 20 SKS IN TO PERFORATIONS @ 3828', 100' VOLUME PLUS 100%, PUMP 12 SKS TOP OF CEMENT RETAINER. WOC 4 HRS. TIH & TAG TOC @ 3828'. FILL HOLE W/H2O, CIRC CLEAN. ATTEMPT TO PT, ATTAIN 100 PSI, THEN START TO INJECT @ 3 BBLS MIN, SD. TOO HIGH. SDFN.

10/5/2022: CK WELL PRESSURES (SIBHP: 30 PSI, SIICP: 480 PSI, SICP: 0 PSI). TIH W/CIRC & SET @ 3748'. STING OUT, DISCUSS VIA PHONE SETTING SECOND RETAINER W/MONICA KUEHLING/NMOCD & DARRELL PRIDDY/BLM, BOTH GAVE VERBAL APPROVAL. BD INT CSG, PMP 70 BBLS H2O CIRC GAS OUT OF INT CSG. ATTEMPT TO PT, UNABLE TO TST. STING INTO RETAINER, EST INJ. MIX 18 SKS CLASS G 1.15 YIELD, 15.8 PPG, PUMP 4 SKS TUBING BEGAN TO PRESSURE UP TO 1000PSI STOPPED TAKING CEMENT, STING OUT PUMP REMAINING 14 SKS TOP OF RETAINER, DISPLACE WITH 13.4 BBLS WATER, PLUG FROM 3748' TO 3564'. WOC 4 HRS. TIH & TAG TOC @ 3564'. SDFN.

San Juan 30-5 Unit 49
30-039-21830
NMSF078997
SR P&A

10/6/2022: CK WELL PRESSURES (SIBHP: 30 PSI, SIICP: 280 PSI, SICP: 0 PSI). RUN CBL F/3570' T/SURF. LOG EMAILED TO MONICA KUEHLING & BRANDON POWELL/NMOCD & DARRELL PRIDDY & KENNY RENNICK/BLM. CIRC H2O DWN PROD CSG UP INT CSG PMP 59 BBLS. RETURNS CLEAN GAS FREE. ATTEMPT TO PT, TST FAILED. FILL HOLE W/5 BBLS H2O, MIX 24 SKS CLASS G 1.15 YIELD, 15.8 PPG DENSITY 2.8 BBLS SLURRY, PUMPED CMT DISPLACE WITH 10.5 BBLS WATER, PLUG F/3129' T/2819'. LD 12 JTS. TIH 20 STANDS. SDFN.

10/7/2022: CK WELL PRESSURES (SIBHP: 30 PSI, SIICP: 60 PSI, SICP: 0 PSI). FILL CSG W/9 BBLS H2O, ATTEMPT TO PT, NO TST. MIX AND PUMP 12 SKS CLASS G 1.15 YIELD 15.8 PPG DENSITY, DISPLACE W/10 BBLS H2O, PLUG F/2955' T/2797'. WOC 4 HRS. TIH & TAG TOC @ 2805'. RU E-LINE RUN IN W/3/8" PERF GUNS, 3 SHOTS ON 60 DEGREE SPACING 1 FOOT, PERFORATE 4-1/2" CSG @ 2659', RD. PICK UP 4-1/2" CICR TIH, SET @ 2594'. STING OUT ATTEMPT PT, NO GO PUMPING 1 BBL MINUTE @ 250 PSI. STING IN TO RETAINER, CLOSE PIPE RAMS MONITOR PRESSURE ON 4-1/2" CASING WHILE CEMENTING, EST CIRC ON INT, MIX 42 SKS CLASS G 1.15 YIELD 15.8 PPG DENSITY, PUMP 25 SKS IN TO RETAINER MONITOR RETURNS ON INT, EXTRA 2.2 BBLS FOR DISPLACEMENT DWN TBG, GAINED 70 PSI ON 4-1/2" WHILE PUMPING INT, OPEN RAMS & FLOW LINE TO 4-1/2, STING OUT, PUMP REMAINING 18 SKS IN TO 4-1/2" CSG, CMT BOTTOM INT STRING 2659', TOP 2421', CEMENT BOTTOM 4- 1/2" CSG 2659' TOP 2405. LD 7 JTS. SDFN. UPDATE EMAIL SENT TO MONICA KUEHLING/NMOCD & KENNY RENNICK/BLM TO UPDATE PROCEDURES: SET CICR WHERE INTENDED @ 3848'. SQZ CSG VOL + 100 % BELOW INTO OPEN PERFS. PERF ABV CICR @ 3840'. SQZ 100' + 100% BEHIND 4 1/2", THEN SPOT 150' CMT ON TOP OF CICR INSIDE 4 1/2". RUN CBL TO SURF. RECEIVED APPROVAL TO CONTINUE WITH PLAN.

10/10/2022: CK WELL PRESSURES (SIBHP: 5 PSI, SIICP: 700 PSI, SICP: 0 PSI). SIICP INDUCED BY CMT OPS DAY PRIOR – NO COMMS SEEN. TIH & TAG CMT @ 2409'. ATTEMPT TO LOAD & TST CSG, HAD FLUID FLOW F/7" CSG. UNABLE TO TST. RU WL. MU PERF GUN. RIH & PERF 3- .43" DIAMETER HOLES @ 1,110'. CORRELATED OFF CBL DATED 10-6-22. PULL GUN OUT OF WELL, ALL PERFS SHOT. TIH W/CICR & SET @ 1059'. BREAK CIRC ABV RETAINER. STING INTO RETAINER. MIX & PUMPED 56 SXS OF CLASS "G" CMT @ 15.8 PPG W/2% CALC2 @ 1.15 FT3 YIELD. DISPLACED W/3.7 BBLS H2O. STING OUT OF RETAINER & TOH. WOC 4 HRS. TIH & TAG @ 958'. LOAD & TST CSG, TST T/580 PSI. SLIGHT LEAK OFF. RU WL. MU PERF GUN. RUN IN & PERFORATE 3- .43" DIAMETER HOLES @ 420' WLM. ALL PERFS SHOT. SDFN.

10/11/2022: CK WELL PRESSURES (SIBHP: 0 PSI, SIICP: 50 PSI, SICP: 0 PSI). NO BH PRESSURE – OBSERVED OPEN VALVE W/ NO FLOW. TIH & SET CICR @ 370'. BREAK CIRC ABV RETAINER. MIX & PUMPED 159 SACKS OF CLASS "G" CEMENT AT 15.8 PPG W/2% CALC2 @ 1.15 FT3 YIELD. DISPLACED W/1.5 BBLS H2O. STING OUT OF RETAINER & TOH. WOC 4 HRS. CK WELL PRESSURES (SICP- 0 PSI. SIICP- 7 PSI. SIBHP- 0 PSI.). ND BOP & NU WH. SISW. RDRR @ 17:30 HRS. DISCUSS PATH FORWARD WITH MONICA KUEHLING/NMOCD, APPROVE RDMO, BUT NEED TO MONITOR PRESSURES FOR 7 DAYS. RECEIVED APPROVAL.

10/21/2022: EMAIL SENT TO MONICA KUEHLING/NMOCD & KENNY RENNICK/BLM TO REPORT ON 7 PRESSURE LOG. NO PRESSURE ON ANY STRINGS FOR A FULL WEEK, AND NO H2S REPORTED. REQUEST TO PERF CIRC HOLES 20' INSIDE SURF SHOE @ 350'. EST CIRC DWN 4 1/2" & UP 9 5/8" X7 ANNULUS. CIRC CMT TO SURF LEAVING 42 SX CLASS 3 CMT IN 9 5/8" X 7 ANNULUS AND 22 SX CMT CLASS 3 IN

San Juan 30-5 Unit 49
30-039-21830
NMSF078997
SR P&A

THE 4 ½". CUT WH & TOP OFF ALL STRINGS W/CMT. WELD ON MARKER. APPROVAL GIVEN TO MOVE FORWARD AS REQUESTED.

10/26/2022: CK WELL PRESSURES (SIBHP: 0 PSI, SIICP: 0 PSI, SICP: 0 PSI). RU ELINE. ND WH. RIH & TAG @ 357'. PERF 3 SPF SDP CHARGES @ 350', ATTEMPT TO CIRC, PRESSURE TO 600 PSI, PUMP 1 BBLS FLUID DOWN SURF CSG, PRESSURE TO 500, NO INJECTION, PUMP 5 BBLS FLUID DOWN INT PRESSURE TO 500 PSI, NO INJECTION, DISCUSS W/CASEY ARNETTE/BLM & MONICA KUEHLING/NMOCD CONSENSUS TO PERFORATE 4-1/2" & 7" CSGS @ 220', 5 BBL VOLUME DOWN 7" CASING 230', PERFORATE 7" & 4-1/2" CSGS @ 220', GOOD CIRCULATION DOWN 4-1/2" UP 7". MIX AND PUMP 50 SKS CLASS G 1.15 FT/3 YIELD 15.8 PPG DENSITY, APPROX 1 BBLS GOOD CMT RETURNS TO SURF ON 4-1/2" X 7" CSG ANNULUS. NO COMMUNICATION W/7" X 9- 5/8" CSG. APPROVED BY CASEY ARNETTE BLM REP ONSITE, SHUT IN WELLHEAD. SDFN.

10/27/2022: CK WELL PRESSURES (SIBHP: 0 PSI, SIICP: 0 PSI, SICP: 0 PSI). CUT OFF WH. WELD ON P&A MARKER. MIX & PUMP 34 SKS OF CLASS G, 1.15 YIELD 15.8 PPG CMNT. FILL CSG TOPS & CELLAR. CASEY ARNETTE/BLM ONSITE TO WITNESSED PLUGGING OPERATIONS.

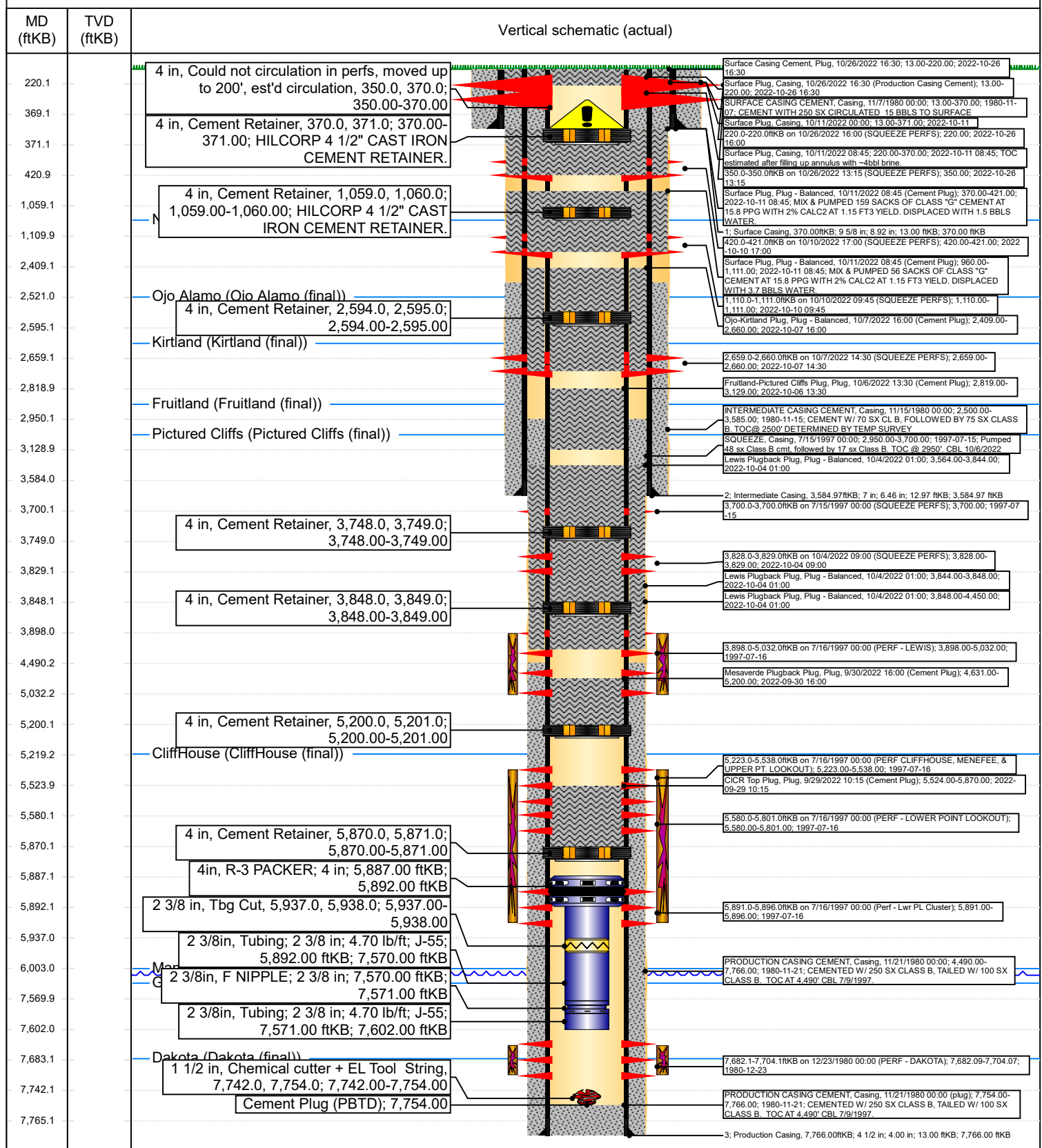


Current Schematic - Version 3

Well Name: SAN JUAN 30-5 UNIT #49

API / UWI 3003921830	Surface Legal Location 009-030N-005W-M	Field Name MV/DK COM	Route 1202	State/Province NEW MEXICO	Well Configuration Type Vertical
Ground Elevation (ft) 6,318.00	Original KB/RT Elevation (ft) 6,331.00	KB-Ground Distance (ft) 13.00	KB-Casing Flange Distance (ft)	KB-Tubing Hanger Distance (ft)	

Original Hole [Vertical]



District I
1625 N. French Dr., Hobbs, NM 88240
Phone:(575) 393-6161 Fax:(575) 393-0720
District II
811 S. First St., Artesia, NM 88210
Phone:(575) 748-1283 Fax:(575) 748-9720
District III
1000 Rio Brazos Rd., Aztec, NM 87410
Phone:(505) 334-6178 Fax:(505) 334-6170
District IV
1220 S. St Francis Dr., Santa Fe, NM 87505
Phone:(505) 476-3470 Fax:(505) 476-3462

State of New Mexico
Energy, Minerals and Natural Resources
Oil Conservation Division
1220 S. St Francis Dr.
Santa Fe, NM 87505

CONDITIONS

Action 157687

CONDITIONS

Operator: HILCORP ENERGY COMPANY 1111 Travis Street Houston, TX 77002	OGRID: 372171
	Action Number: 157687
	Action Type: [C-103] Sub. Plugging (C-103P)

CONDITIONS

Created By	Condition	Condition Date
mkuehling	well plugged 10/27/22	1/3/2023