

Submit 1 Copy To Appropriate District Office

District I - (575) 393-6161
1625 N. French Dr., Hobbs, NM 88240
District II - (575) 748-1283
811 S. First St., Artesia, NM 88210
District III - (505) 334-6178
1000 Rio Brazos Rd., Aztec, NM 87410
District IV - (505) 476-3460
1220 S. St. Francis Dr., Santa Fe, NM 87505

State of New Mexico
Energy, Minerals and Natural Resources

OIL CONSERVATION DIVISION
1220 South St. Francis Dr.
Santa Fe, NM 87505

Form C-103
Revised July 18, 2013

| | |
|---|--|
| WELL API NO. 30-025-11549 | |
| 5. Indicate Type of Lease STATE <input type="checkbox"/> FEE <input checked="" type="checkbox"/> | |
| 6. State Oil & Gas Lease No. | |
| 7. Lease Name or Unit Agreement Name Eaton BAC | |
| 8. Well Number 1 | |
| 9. OGRID Number 256073 | |
| 10. Pool name or Wildcat LANGLIE MATTIX;7 RVR-S-Q-GRAYBURG | |

SUNDRY NOTICES AND REPORTS ON WELLS
(DO NOT USE THIS FORM FOR PROPOSALS TO DRILL OR TO DEEPEN OR PLUG BACK TO A DIFFERENT RESERVOIR. USE "APPLICATION FOR PERMIT" (FORM C-101) FOR SUCH PROPOSALS.)

1. Type of Well: Oil Well ☒ Gas Well ☐ Other ☐

2. Name of Operator
J R Oil Ltd. Co.

3. Address of Operator
PO Box 2975 Hobbs, NM 88241

4. Well Location
Unit Letter **G** : **1980** feet from the **North** line and **2310** feet from the **East** line
Section **12** Township **25 S** Range **37E** NMPM County **Lea**

11. Elevation (Show whether DR, RKB, RT, GR, etc.)

12. Check Appropriate Box to Indicate Nature of Notice, Report or Other Data

NOTICE OF INTENTION TO:

PERFORM REMEDIAL WORK ☐ **PLUG AND ABANDON** ☒
TEMPORARILY ABANDON ☐ CHANGE PLANS ☐
PULL OR ALTER CASING ☐ MULTIPLE COMPL ☐
DOWNHOLE COMMINGLE ☐
CLOSED-LOOP SYSTEM ☐
OTHER: ☐

SUBSEQUENT REPORT OF:

REMEDIAL WORK ☐ ALTERING CASING ☐
COMMENCE DRILLING OPNS. ☐ P AND A ☐
CASING/CEMENT JOB ☐
OTHER: ☐

13. Describe proposed or completed operations. (Clearly state all pertinent details, and give pertinent dates, including estimated date of starting any proposed work). SEE RULE 19.15.7.14 NMAC. For Multiple Completions: Attach wellbore diagram of proposed completion or recompletion.

Note changes to procedure

1. MIRU Plugging service
2. RIH work string, tag cement, circulate well with MLF.
3. Spot 25 sx cement from 2511'
 - a. All cement plugs shall be Class C neat unless approved by NMOCD
4. Spot 25 sx cement from 1050' **P&S 50 sx ClaasC 650 CSG Leak**
5. Perforate 5-1/2" casing @ 391' and squeeze 50 sx cement
6. Perforate 5-1/2" casing @ 150' and circulate cement to surface
7. Cut off wellhead 3' beneath grade, top off with cement, weld marker plate and back fill
8. Remove underground piping and surface equipment. Remediate surface location per NMOCD.

4" diameter 4' tall Above Ground Marker

Spud Date:

03/30/1962

Rig Release Date:

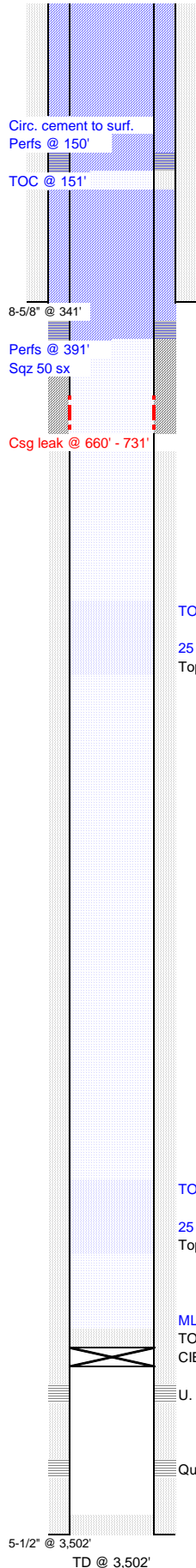
SEE ATTACHED CONDITIONS OF APPROVAL

I hereby certify that the information above is true and complete to the best of my knowledge and belief.

SIGNATURE Maren Latimer TITLE Agent DATE 1/31/2023
Type or print name Maren Latimer E-mail address: mlatimer@ravenop.com PHONE: 575-691-6790
For State Use Only
APPROVED BY: Kerry Fortner TITLE Compliance Officer A DATE 2/1/23
Conditions of Approval (if any) 575-263-6633

JR Oil Ltd.

Eaton B AC-1 #1 PROPOSED



| | | | | | | | | | | | | | | |
|---|--------|-------|-------|-------|-----------------------|------------|---------------------|--------|--------------------|-----------|-----------|---------------|------------|--|
| WELL NAME: Eaton B AC-1 #1 | | | | | FORMATION: Queen | | | | | KB: 12.0 | | | | |
| API NO: 30-025-11549 | | | | | FIELD: Langlie Mattix | | | | | PBTD: | | | | |
| SPUD DATE: March 30, 1962 | | | | | COUNTY: Lea | | | | | TD: 3,502 | | | | |
| CASING | | | | | | | | | CEMENT & HOLE DATA | | | | | |
| | joints | OD | lb/ft | grade | ID (in) | drift (in) | top | bottom | bit size | depth | sacks | TOC | | |
| Surface | 10 | 8 5/8 | 24.00 | J-55 | 8.097 | 7.972 | 12' | 341' | 12 1/4 | 341' | 300 | circ. | | |
| Production | 116 | 5 1/2 | 14.00 | J-55 | 5.012 | 4.887 | 12' | 3,502' | 7 | 3,502' | 300 | surf. (calc.) | | |
| History: 3/30/1962 Spud by Texas Pacific Coal & Oil Co., perf Queen, frac 10k# sand in 10k gal ref. oil, swab, flow, POP, IP 140 BOPD, 171 MCFD, 7 BWPD, API 33 9/28/1982 Csg leak 660' - 731', sqz 250 sx cement, acidize Queen 2k gal 15% "MSR-150," perf U. Queen , acidize 2,500 gal 15% "MSR-150" & BS, swab, frac 21k# 20/40 sand in 13k gal, swab, (pulled RBP?), POP, IP 10 BOPD, 25 MCFD, 12 BWPD 6/5/1989 Gas analysis: CO2 0.15%, H2S 0, N2 0.67%, C1 45, C2 24, C3 16, Ci4 16, Cn4 6, Ci5 2, Cn5 2, C6+ 2, SG 1.077, BTU 1,814 12/1/1993 Oil analysis: asphaltenes 0.3%, resin 2.69%, prfn 1.8, Water analysis: pH 7.1, H2S & CO2 0, SG 1.112, TDS 164.4k, Cl 102.7k, Na 44.6k 1/10/1994 Cloud point 40 degF 1/17/1994 Clean out fill w/ air 3,461' - 86', torque every break (?) 5/20/1994 Water analysis: pH 6.9, H2S 5 ppm, CO2 30 ppm, SG 1.109, TDS 154.9k mg/L, Cl 97.2k, Na 42.5k 6/28/2022 Att. hot water, pull rods & pump, hot water tbg 50 bbls, pull tbg, hit fluid @ 88 JFS, att. swab, prfn , hot water tbg w/ prfn, test tbg, (2) bad jts, (1) crimp, tag fill @ 3,485' , can't seat pump, flush three times, pump stuck open, pull tbg, all OK except mud anchor full of soft prfn , RBIH, swab to flowline, decide to TA, lay down rods, trip bit & scraper, CIBP @ 3,275', dump cement, circ. pkr fluid | | | | | | | PERFORATIONS | | | | | | | |
| | | | | | | | top | bottom | zone | status | tll shots | date | | |
| | | | | | | | 3,322' | 3,340' | U. Queen | plugged | 26 | 11/01/82 | | |
| | | | | | | | 3,424' | 3,440' | Queen | plugged | 20 | 03/30/62 | | |
| | | | | | | | | | | | | | | |
| | | | | | | | | | | | | | | |
| | | | | | | | | | | | | | | |
| | | | | | | | | | | | | | | |
| | | | | | | | | | | | | | | |
| | | | | | | | | | | | | | | |
| TUBING (none) | | | | | | | | | OD (in) | ID (in) | joints | length (ft) | depth (ft) | |
| | | | | | | | | | | | | | | |
| | | | | | | | | | | | | | | |
| | | | | | | | | | | | | | | |
| | | | | | | | | | | | | | | |
| | | | | | | | | | | | | | | |
| | | | | | | | | | | | | | | |
| | | | | | | | | | | | | | | |
| | | | | | | | | | | | | | | |
| | | | | | | | | | | | | | | |
| RODS (none) | | | | | | | | | OD (in) | grade | rods | length (ft) | depth (ft) | |
| | | | | | | | | | | | | | | |
| | | | | | | | | | | | | | | |
| | | | | | | | | | | | | | | |
| | | | | | | | | | | | | | | |
| | | | | | | | | | | | | | | |
| | | | | | | | | | | | | | | |
| | | | | | | | | | | | | | | |
| | | | | | | | | | | | | | | |
| | | | | | | | | | | | | | | |
| 810' | | | | | | | | | | | | | | |
| ment | | | | | | | | | | | | | | |
| alt @ 1,050' | | | | | | | | | | | | | | |
| 2,271' | | | | | | | | | | | | | | |
| ment | | | | | | | | | | | | | | |
| ates @ 2,511' | | | | | | | | | | | | | | |
| 3,240' (calc.) | | | | | | | | | | | | | | |
| 3,275' | | | | | | | | | | | | | | |
| n perfs @ 3,322' - 40' | | | | | | | | | | | | | | |
| erfs @ 3,424' - 40' | | | | | | | | | | | | | | |
| 3,485' (2022) | | | | | | | | | | | | | | |

**CONDITIONS OF APPROVAL
FOR PLUGGING AND ABANDONMENT
OCD - Southern District**

The following is a guide or checklist in preparation of a plugging program, this is not all inclusive and care must be exercised in establishing special plugging programs in unique and unusual cases, Notify NMOCD District Office I (Hobbs) at (575)-263-6633 at least 24 hours before beginning work. After MIRU rig will remain on well until it is plugged to surface. OCD is to be notified before rig down.

Company representative will be on location during plugging procedures.

1. A notice of intent to plug and abandon a wellbore is required to be approved before plugging operations are conducted. A cement evaluation tool is required in order to ensure isolation of producing formations, protection of water and correlative rights. A cement bond log or other accepted cement evaluation tool is to be provided to the division for evaluation if one has not been previously run or if the well did not have cement circulated to surface during the original casing cementing job or subsequent cementing jobs. Insure all bradenheads have been exposed, identified and valves are operational prior to rig up.
2. Closed loop system is to be used for entire plugging operation. Upon completion, contents of steel pits are to be hauled to a permitted disposal location.
3. Trucking companies being used to haul oilfield waste fluids to a disposal - commercial or private- shall have an approved NMOCD C-133 permit. A copy of this permit shall be available in each truck used to haul waste products. It is the responsibility of the operator as well as the contractor, to verify that this permit is in place prior to performing work. Drivers shall be able to produce a copy upon request of an NMOCD Field inspector.
4. Filing a subsequent C-103 will serve as notification that the well has been plugged.
5. A final C-103 shall be filed (and a site inspection by NMOCD Inspector to determine if the location is satisfactorily cleaned, all equipment, electric poles and trash has been removed to Meet NMOCD standards) before bonding can be released.
6. If work has not begun within 1 Year of the approval of this procedure, an extension request must be file stating the reason the well has not been plugged.
7. Squeeze pressures are not to exceed 500 psi, unless approval is given by NMOCD.
8. Produced water will not be used during any part of the plugging operation.
9. Mud laden fluids must be placed between all cement plugs mixed at 25 sacks per 100 bbls of water.
10. All cement plugs will be a minimum of 100' in length or a minimum of 25 sacks of cement, whichever is greater. 50' of calculated cement excess required for inside casing plugs and 100% calculated cement excess required on outside casing plugs.
11. Class 'C' cement will be used above 7500 feet.
12. Class 'H' cement will be used below 7500 feet.
13. A cement plug is required to be set 50' above and 50' below, casing stubs, DV tools, attempted casing cut offs, cement tops outside casing, salt sections and anywhere the casing is perforated, these plugs require a 4 hour WOC and then will be tagged
14. All Casing Shoes Will Be Perforated 50' below shoe depth and Attempted to be Squeezed, cement needs to be 50' above and 50' Below Casing Shoe inside the Production Casing.
16. When setting the top out cement plug in production, intermediate and surface casing, wellbores should remain full at least 30 minutes after plugs are set
17. A CIBP is to be set within 100' of production perforations, capped with 100' of cement, WOC 4 hours and tag.
18. A CIBP with 35' of cement may be used in lieu of the 100' plug if set with a bailer. This plug will be placed within 100' of the top perforation, (WOC 4 hrs and tag).

19. No more than 3000' is allowed between cement plugs in cased hole and 2000' in open hole.
20. Some of the Formations to be isolated with cement plugs are: These plugs to be set to isolate formation tops
- A) Fusselman
 - B) Devonian
 - C) Morrow
 - D) Wolfcamp
 - E) Bone Springs
 - F) Delaware
 - G) Any salt sections
 - H) Abo
 - I) Glorieta
 - J) Yates.
 - K) Potash---(In the R-111-P Area (Potash Mine Area),
A solid cement plug must be set across the salt section. Fluid used to mix the cement shall be saturated with the salts that are common to the section penetrated and in suitable proportions, not more than 3% calcium chloride (by weight of cement) will be considered the desired mixture whenever possible, WOC 4 hours and tag, this plug will be 50' below the bottom and 50' above the top of the Formation.
21. If cement does not exist behind casing strings at recommended formation depths, the casing can be cut and pulled with plugs set at recommended depths. If casing is not pulled, perforations will be shot and cement squeezed behind casing, WOC and tagged. These plugs will be set 50' below formation bottom to 50' above formation top inside the casing.

DRY HOLE MARKER REQUIREMENTS

The operator shall mark the exact location of the plugged and abandoned well with a steel marker not less than four inches in diameter, 3' below ground level with a plate of at least ¼" welded to the top of the casing and the dry hole marker welded on the plate with the following information welded on the dry hole marker:

1. Operator name
2. Lease and Well Number
3. API Number
4. Unit letter
5. Quarter Section (feet from the North, South, East or West)
6. Section, Township and Range
7. Plugging Date
8. County

SPECIAL CASES -----AGRICULTURE OR PRARIE CHICKEN BREEDING AREAS

In these areas, a below ground marker is required with all pertinent information mentioned above on a plate, set 3' below ground level, a picture of the plate will be supplied to NMOCD for record, the exact location of the marker (longitude and latitude by GPS) will be provided to NMOCD (We typically require a current survey to verify the GPS)

SITE REMEDIATION DUE WITHIN ONE YEAR OF WELL PLUGGING COMPLETION

J R Oil, Ltd.

Eaton B AC-1 #1

Plug & Abandon Procedure

01/26/2023

1. MIRU plugging service.
2. RIH work string, tag cement, circulate well w/ MLF.
3. Spot 25 sx cement from 2,511'
 - a. All cement plugs shall be Class C neat unless approved by NMOCD
4. Spot 25 sx cement from 1,050'
5. Perforate 5-1/2" casing @ 391' and squeeze 50 sx cement
6. Perforate 5-1/2" casing @ 150' and circulate cement to surface.
7. Cut off well head 3' beneath grade, top off with cement, weld marker plate, and back fill.
8. Remove all underground piping and surface equipment. Remediate surface location per NMOCD.

Information

Well

Name: Eaton B AC-1 #1

API: 30-025-11549

Location: Unit G, section 12, T 25S, R 37E, 1,980' FNL, 2,310' FEL

Lat/long: 32.1466255, -103.1156158

Directions: From Jal travel East on Hwy 128 for 4.7 miles.

Turn North (left) on Blocker Rd., and travel 1.5 miles.

Turn East (right) on Blocker Ln. Take the first right (East) after the road bends to the North. Follow the road another 0.3 miles to the well. See attached satellite image.

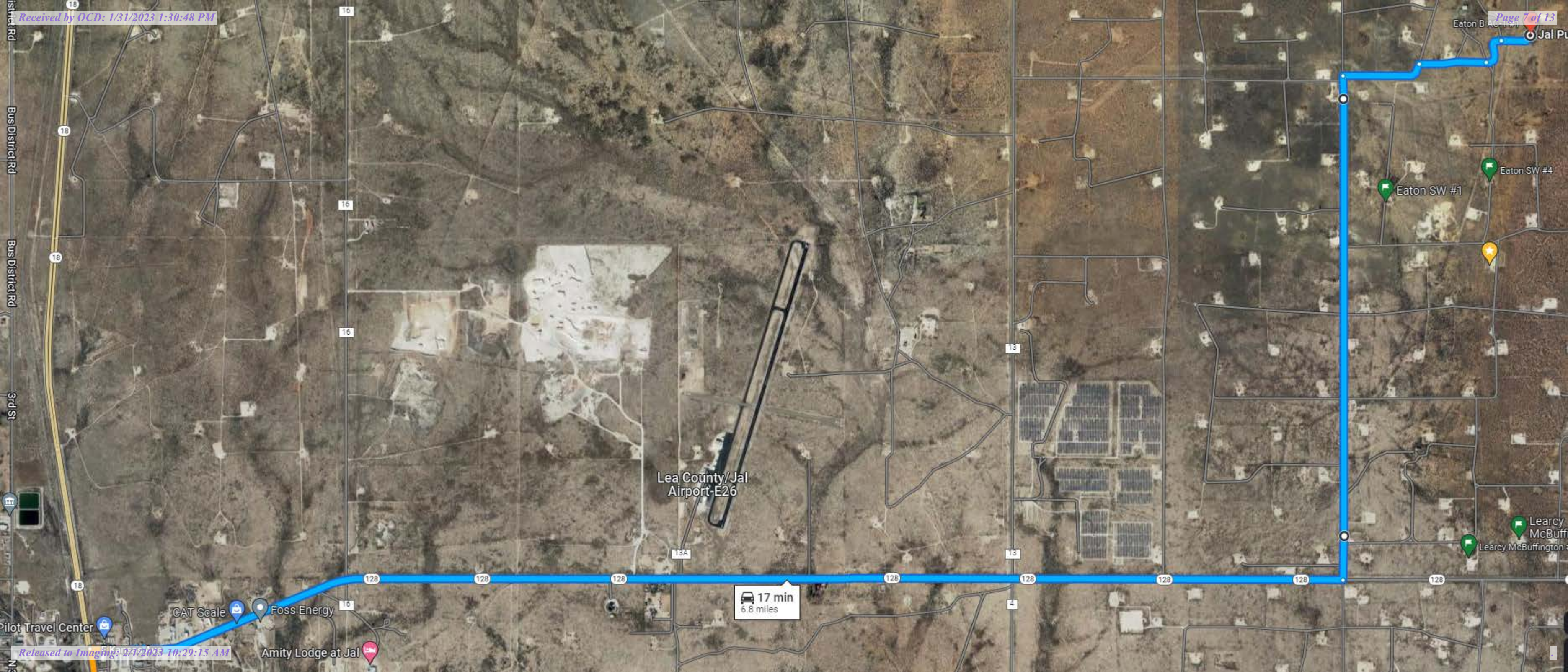
Contacts

Company Man in charge: Bobby Stearns (575) 760-2482

Engineer: Ian Petersen (432) 634-4922

Production Foreman: Josh Latimer (575) 414-9188

Pumper: Charles Cowger (575) 631-7939



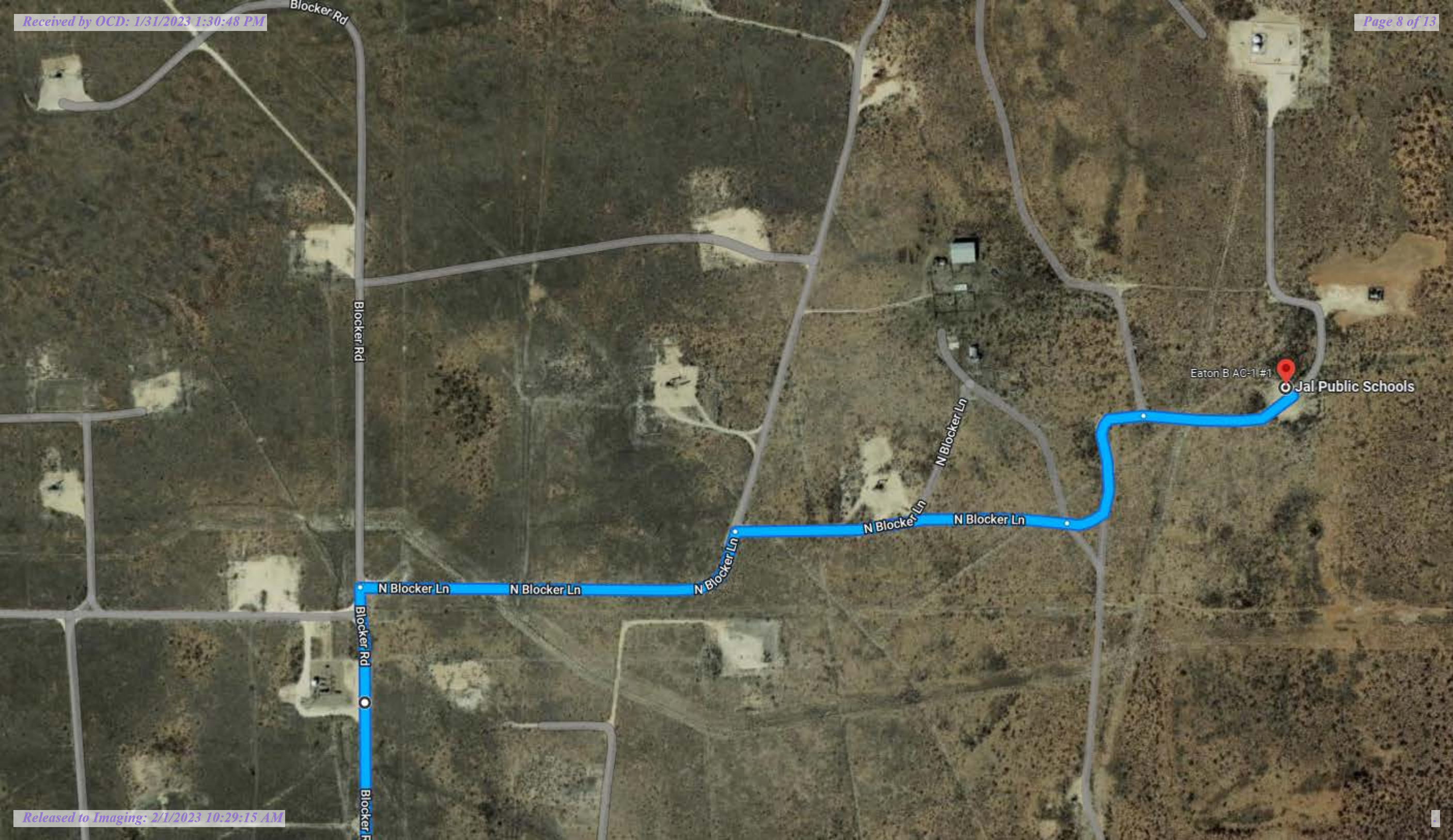
Received by OCD: 1/31/2023 1:30:48 PM

Page 7 of 13

Lea County/Jal
Airport-E26

17 min
6.8 miles

Released to Imaging: 2/1/2023 10:29:15 AM



Eaton B AC-1 #1

Jal Public Schools

JR Oil Ltd.

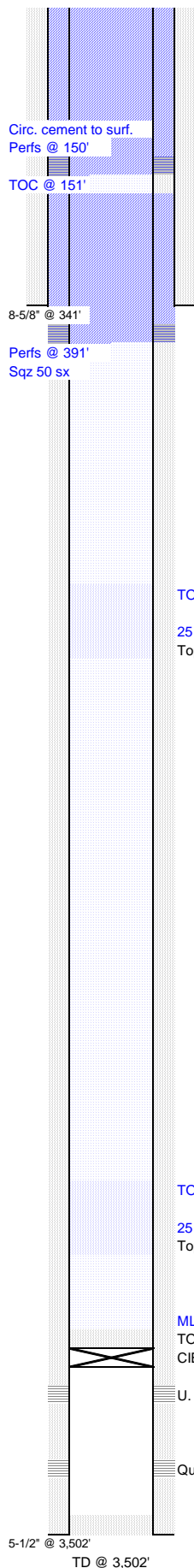
Eaton B AC-1 #1

[illegible]

Updated: December 14, 2022 by Ian Petersen

JR Oil Ltd.

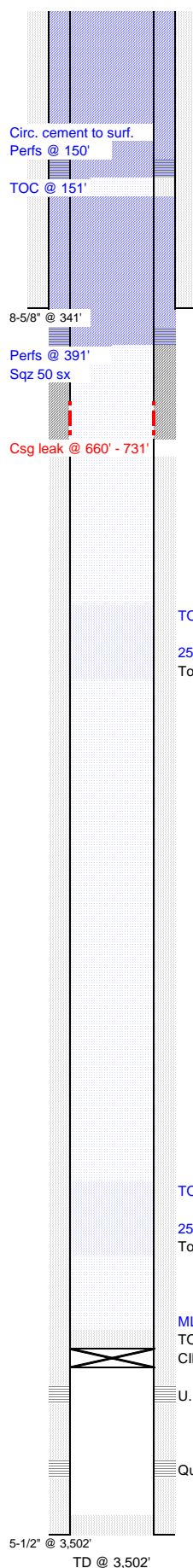
Eaton B AC-1 #1 PROPOSED



| | | | | | | | | | | | | | |
|---|--------|-------|-------|-------|-----------------------|------------|---------------------|-----------|--------------------|---------|-----------|---------------|------------|
| WELL NAME: Eaton B AC-1 #1 | | | | | FORMATION: Queen | | | KB: 12.0 | | | | | |
| API NO: 30-025-11549 | | | | | FIELD: Langlie Mattix | | | PBTD: | | | | | |
| SPUD DATE: March 30, 1962 | | | | | COUNTY: Lea | | | TD: 3,502 | | | | | |
| CASING | | | | | | | | | CEMENT & HOLE DATA | | | | |
| | joints | OD | lb/ft | grade | ID (in) | drift (in) | top | bottom | bit size | depth | sacks | TOC | |
| Surface | 10 | 8 5/8 | 24.00 | J-55 | 8.097 | 7.972 | 12' | 341' | 12 1/4 | 341' | 300 | circ. | |
| Production | 116 | 5 1/2 | 14.00 | J-55 | 5.012 | 4.887 | 12' | 3,502' | 7 | 3,502' | 300 | surf. (calc.) | |
| History: 3/30/1962 Spud by Texas Pacific Coal & Oil Co., perf Queen, frac 10k# sand in 10k gal ref. oil, swab, flow, POP, IP 140 BOPD, 171 MCFD, 7 BWPD, API 33 9/28/1982 Csg leak 660' - 731', sqz 250 sx cement, acidize Queen 2k gal 15% "MSR-150," perf U. Queen, acidize 2,500 gal 15% "MSR-150" & BS, swab, frac 21k# 20/40 sand in 13k gal, swab, (pulled RBP?), POP, IP 10 BOPD, 25 MCFD, 12 BWPD 6/5/1989 Gas analysis: CO2 0.15%, H2S 0, N2 0.67%, C1 45, C2 24, C3 16, C4 16, Cn4 6, Ci5 2, Cn5 2, C6+ 2, SG 1.077, BTU 1,814 12/1/1993 Oil analysis: asphaltenes 0.3%, resin 2.69%, prffn 1.8, Water analysis: pH 7.1, H2S & CO2 0, SG 1.112, TDS 164.4k, Cl 102.7k, Na 44.6k 1/10/1994 Cloud point 40 degF 1/17/1994 Clean out fill w/ air 3,461' - 86', torque every break (?) 5/20/1994 Water analysis: pH 6.9, H2S 5 ppm, CO2 30 ppm, SG 1.109, TDS 154.9k mg/L, Cl 97.2k, Na 42.5k 6/28/2022 Att. hot water, pull rods & pump, hot water tbg 50 bbls, pull tbg, hit fluid @ 88 JFS, att. swab, prffn, hot water tbg w/ prffn, test tbg, (2) bad jts, (1) crimp, tag fill @ 3,485', can't seat pump, flush three times, pump stuck open, pull tbg, all OK except mud anchor full of soft prffn, RBIH, swab to flowline, decide to TA, lay down rods, trip bit & scraper, CIBP @ 3,275', dump cement, circ. pkr fluid | | | | | | | PERFORATIONS | | | | | | |
| | | | | | | | top | bottom | zone | status | tfl shots | date | |
| | | | | | | | 3,322' | 3,340' | U. Queen | plugged | 26 | 11/01/82 | |
| | | | | | | | 3,424' | 3,440' | Queen | plugged | 20 | 03/30/62 | |
| | | | | | | | | | | | | | |
| | | | | | | | | | | | | | |
| | | | | | | | | | | | | | |
| | | | | | | | | | | | | | |
| | | | | | | | | | | | | | |
| | | | | | | | | | | | | | |
| TUBING (none) | | | | | | | | | OD (in) | ID (in) | joints | length (ft) | depth (ft) |
| | | | | | | | | | | | | | |
| | | | | | | | | | | | | | |
| | | | | | | | | | | | | | |
| | | | | | | | | | | | | | |
| | | | | | | | | | | | | | |
| | | | | | | | | | | | | | |
| | | | | | | | | | | | | | |
| | | | | | | | | | | | | | |
| | | | | | | | | | | | | | |
| RODS (none) | | | | | | | | | OD (in) | grade | rods | length (ft) | depth (ft) |
| | | | | | | | | | | | | | |
| | | | | | | | | | | | | | |
| | | | | | | | | | | | | | |
| | | | | | | | | | | | | | |
| | | | | | | | | | | | | | |
| | | | | | | | | | | | | | |
| | | | | | | | | | | | | | |
| | | | | | | | | | | | | | |
| | | | | | | | | | | | | | |
| 2,271' | | | | | | | | | | | | | |
| ment | | | | | | | | | | | | | |
| ates @ 2,511' | | | | | | | | | | | | | |
| 3,240' (calc.) | | | | | | | | | | | | | |
| 3,275' | | | | | | | | | | | | | |
| perfs @ 3,322' - 40' | | | | | | | | | | | | | |
| erfs @ 3,424' - 40' | | | | | | | | | | | | | |
| 3,485' (2022) | | | | | | | | | | | | | |

JR Oil Ltd.

Eaton B AC-1 #1 PROPOSED

[illegible]

Updated: January 25, 2023 by Ian Petersen

District I
1625 N. French Dr., Hobbs, NM 88240
Phone:(575) 393-6161 Fax:(575) 393-0720
District II
811 S. First St., Artesia, NM 88210
Phone:(575) 748-1283 Fax:(575) 748-9720
District III
1000 Rio Brazos Rd., Aztec, NM 87410
Phone:(505) 334-6178 Fax:(505) 334-6170
District IV
1220 S. St Francis Dr., Santa Fe, NM 87505
Phone:(505) 476-3470 Fax:(505) 476-3462

State of New Mexico
Energy, Minerals and Natural Resources
Oil Conservation Division
1220 S. St Francis Dr.
Santa Fe, NM 87505

COMMENTS

Action 181290

COMMENTS

| | |
|---|---|
| Operator: J R OIL, LTD. CO. P.O. Box 52647 Tulsa, OK 74152 | OGRID: 256073 |
| | Action Number: 181290 |
| | Action Type: [C-103] NOI Plug & Abandon (C-103F) |

COMMENTS

| Created By | Comment | Comment Date |
|------------|---------------|--------------|
| plmartinez | DATA ENTRY PM | 2/1/2023 |

District I
1625 N. French Dr., Hobbs, NM 88240
Phone:(575) 393-6161 Fax:(575) 393-0720
District II
811 S. First St., Artesia, NM 88210
Phone:(575) 748-1283 Fax:(575) 748-9720
District III
1000 Rio Brazos Rd., Aztec, NM 87410
Phone:(505) 334-6178 Fax:(505) 334-6170
District IV
1220 S. St Francis Dr., Santa Fe, NM 87505
Phone:(505) 476-3470 Fax:(505) 476-3462

State of New Mexico
Energy, Minerals and Natural Resources
Oil Conservation Division
1220 S. St Francis Dr.
Santa Fe, NM 87505

CONDITIONS

Action 181290

CONDITIONS

| | |
|---|---|
| Operator: J R OIL, LTD. CO. P.O. Box 52647 Tulsa, OK 74152 | OGRID: 256073 |
| | Action Number: 181290 |
| | Action Type: [C-103] NOI Plug & Abandon (C-103F) |

CONDITIONS

| Created By | Condition | Condition Date |
|------------|--|----------------|
| kfortner | See attached COA Note changes to procedure | 2/1/2023 |