

Submit Copy To Appropriate District Office
District I - (575) 393-6161
1625 N. French Dr., Hobbs, NM 88240
District II - (575) 748-1283
811 S. First St., Artesia, NM 88210
District III - (505) 334-6178
1000 Rio Brazos Rd., Aztec, NM 87410
District IV - (505) 476-3460
1220 S. St. Francis Dr., Santa Fe, NM 87505

State of New Mexico
Energy, Minerals and Natural Resources

Form C-103
Revised July 18, 2013

OIL CONSERVATION DIVISION
1220 South St. Francis Dr.
Santa Fe, NM 87505

WELL API NO. 30-015-48636
5. Indicate Type of Lease STATE [] FEE [x]
6. State Oil & Gas Lease No.
7. Lease Name or Unit Agreement Name Tommy Boy 23/24 W0LI Fee
8. Well Number 1H
9. OGRID Number 14744
10. Pool name or Wildcat Purple Sage; Wolfcamp Gas
11. Elevation (Show whether DR, RKB, RT, GR, etc.) 3105' GL

SUNDRY NOTICES AND REPORTS ON WELLS
(DO NOT USE THIS FORM FOR PROPOSALS TO DRILL OR TO DEEPEN OR PLUG BACK TO A DIFFERENT RESERVOIR. USE "APPLICATION FOR PERMIT" (FORM C-101) FOR SUCH PROPOSALS.)
1. Type of Well: Oil Well [] Gas Well [x] Other
2. Name of Operator Mewbourne Oil Company
3. Address of Operator P.O. Box 5270 Hobbs, NM 88241
4. Well Location Unit Letter I : 2440 feet from the S line and 550 feet from the E line
Section 22 Township 22S Range 27E NMPM County Eddy
11. Elevation (Show whether DR, RKB, RT, GR, etc.) 3105' GL

12. Check Appropriate Box to Indicate Nature of Notice, Report or Other Data

NOTICE OF INTENTION TO:
PERFORM REMEDIAL WORK [] PLUG AND ABANDON []
TEMPORARILY ABANDON [] CHANGE PLANS []
PULL OR ALTER CASING [] MULTIPLE COMPL []
DOWNHOLE COMMINGLE []
CLOSED-LOOP SYSTEM []
OTHER: [x]
SUBSEQUENT REPORT OF:
REMEDIAL WORK [] ALTERING CASING []
COMMENCE DRILLING OPNS. [] P AND A []
CASING/CEMENT JOB []
OTHER: []

13. Describe proposed or completed operations. (Clearly state all pertinent details, and give pertinent dates, including estimated date of starting any proposed work). SEE RULE 19.15.7.14 NMAC. For Multiple Completions: Attach wellbore diagram of proposed completion or recompletion.

Mewbourne Oil Company requests a SHL change for the Tommy Boy 23/24 W0LI Fee #1H from 2440 FSL & 550 FEL (Sec 22, T22S, R27E) to 2440 FSL & 320 FEL (Sec 22, T22S, R27E). Please see attached C-102 with the updated SHL.

Spud Date: 05/12/2023

Rig Release Date: 06/03/2023

I hereby certify that the information above is true and complete to the best of my knowledge and belief.

SIGNATURE Gage Owen TITLE Engineer DATE 02/06/2023

Type or print name Gage Owen E-mail address: gowen@mewbourne.com PHONE: 575-552-6224

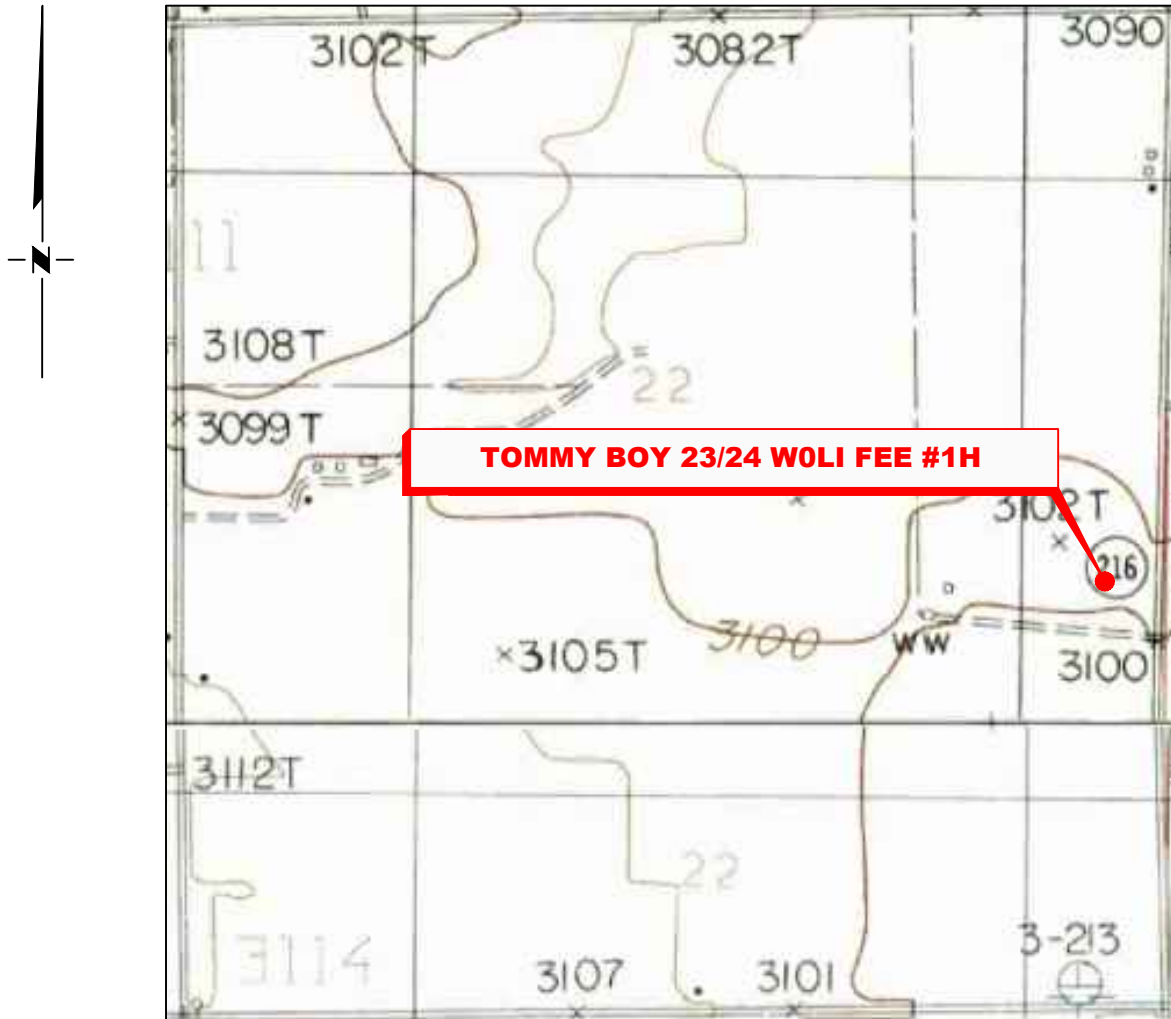
For State Use Only

APPROVED BY: TITLE DATE

Conditions of Approval (if any):

LOCATION VERIFICATION MAP

NOT TO SCALE



SECTION 22, TWP. 22 SOUTH, RGE. 27 EAST,
N. M. P. M., EDDY CO., NEW MEXICO

OPERATOR: <u>Mewbourne Oil Company</u>	LOCATION: <u>2440' FSL & 320' FEL</u>
LEASE: <u>Tommy Boy 23/24 WOLI Fee</u>	CONTOUR INTERVAL: <u>10'</u>
WELL NO.: <u>1H</u>	USGS TOPO. SOURCE MAP: <u>Carlsbad East, NM (1985)</u>
ELEVATION: <u>3102'</u>	

Copyright 2016 - All Rights Reserved

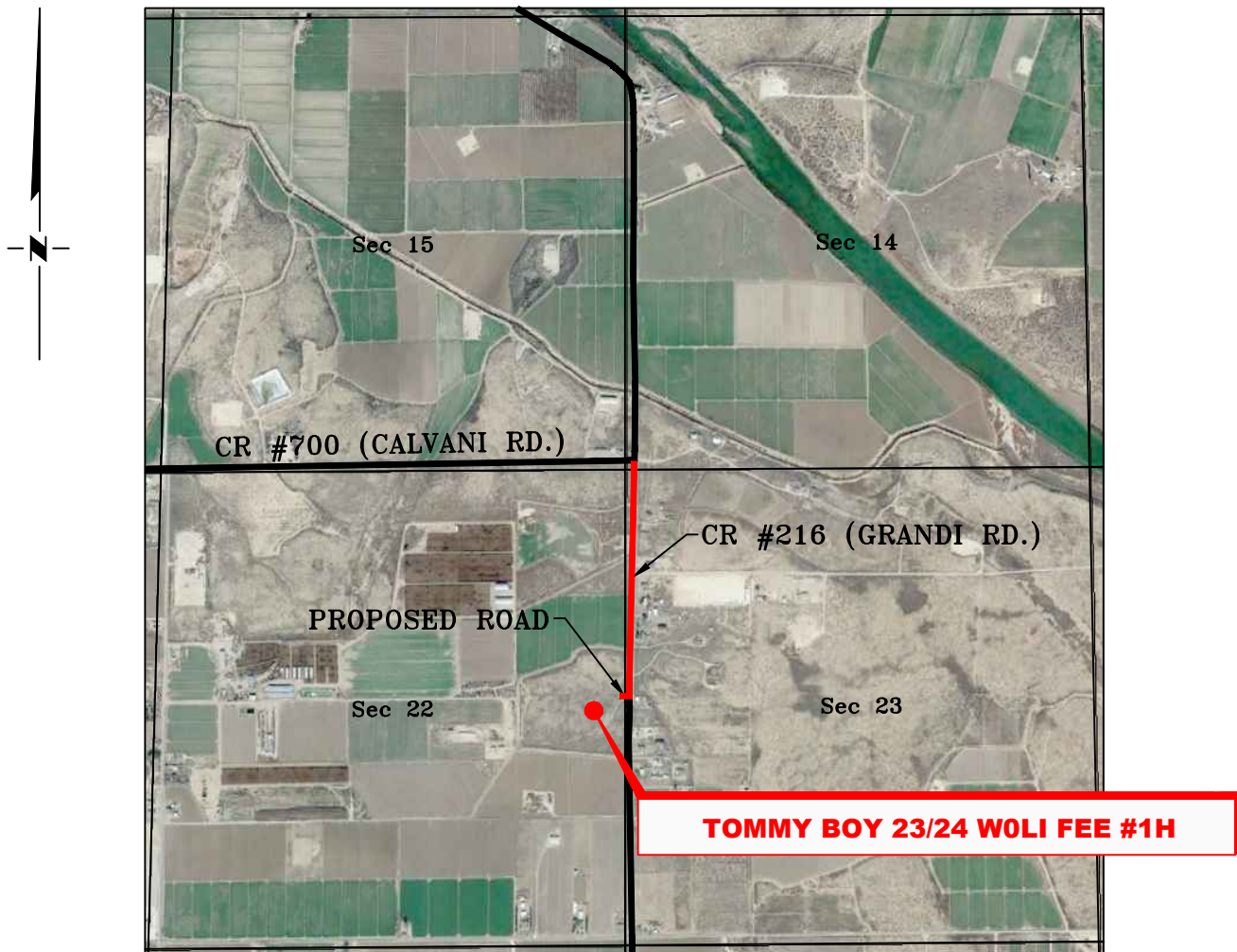
NO.	REVISION	DATE
JOB NO.: LS23010079		
DWG. NO.: 23010079-2		



701 S. CECIL ST., HOBBS, NM 88240 (575) 964-8200

SCALE: N/A
DATE: 01/27/2023
SURVEYED BY: ML/JV
DRAWN BY: AR
APPROVED BY: RMH
SHEET: 1 OF 1

VICINITY MAP



*SECTION 22, TWP. 22 SOUTH, RGE. 27 EAST,
N. M. P. M., EDDY COUNTY, NEW MEXICO*

OPERATOR: Mewbourne Oil Company LOCATION: 2440' FSL & 320' FEL
 LEASE: Tommy Boy 23/24 WOLI Fee ELEVATION: 3102'
 WELL NO.: 1H

Copyright 2016 - All Rights Reserved

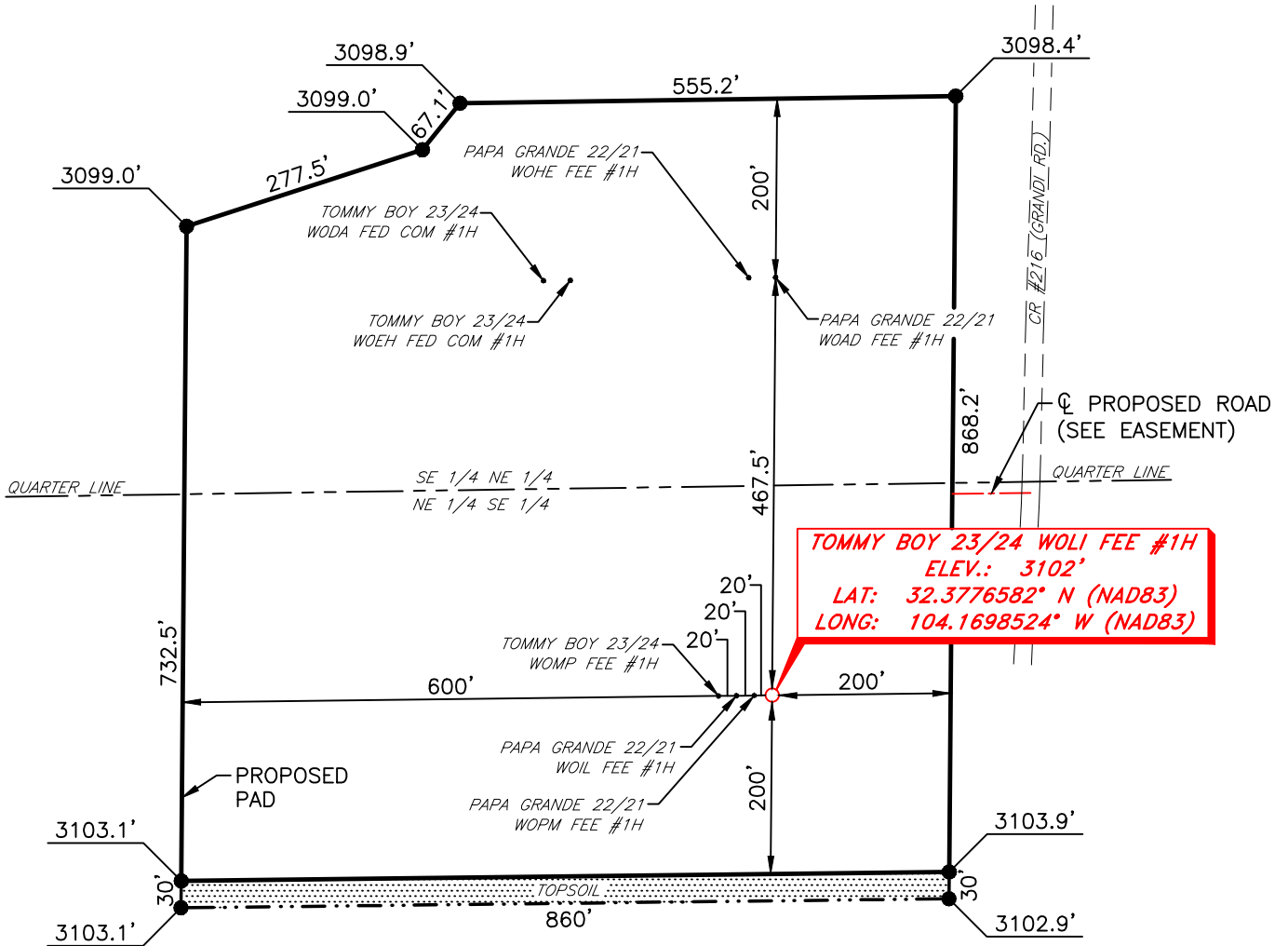
NO.	REVISION	DATE
JOB NO.: LS23010079		
DWG. NO.: 23010079-3		



701 S. CECIL ST., HOBBS, NM 88240 (575) 964-8200

SCALE: N. T. S.
DATE: 01/27/2023
SURVEYED BY: ML/JV
DRAWN BY: AR
APPROVED BY: RMH
SHEET: 1 OF 1

**MEWBOURNE OIL COMPANY
TOMMY BOY 23/24 WOLI FEE #1H
(2440' FSL & 320' FEL)
SECTION 22, T22S, R27E
N. M. P. M., EDDY CO., NEW MEXICO**



DIRECTIONS TO LOCATION

From the intersection of CR-700 (Calvani Rd.) & CR-216 (Grandi Rd.);
Go South on CR-216 approx. 0.5 miles to a proposed road on the right;
Turn right and go West approx. 320 feet to location on the left.

SE 1/4 NE 1/4	246,980.72 Sq Ft.	7.966 Acres
NE 1/4 SE 1/4	273,243.24 Sq Ft.	6.273 Acres

TOTAL: 520,223.96 Sq Ft.
TOTAL: 14.239 Acres



SCALE: 1" = 200'
0 100 200

BEARINGS ARE
NAD 83 GRID - NM EAST
DISTANCES ARE
GROUND.

Copyright 2016 - All Rights Reserved

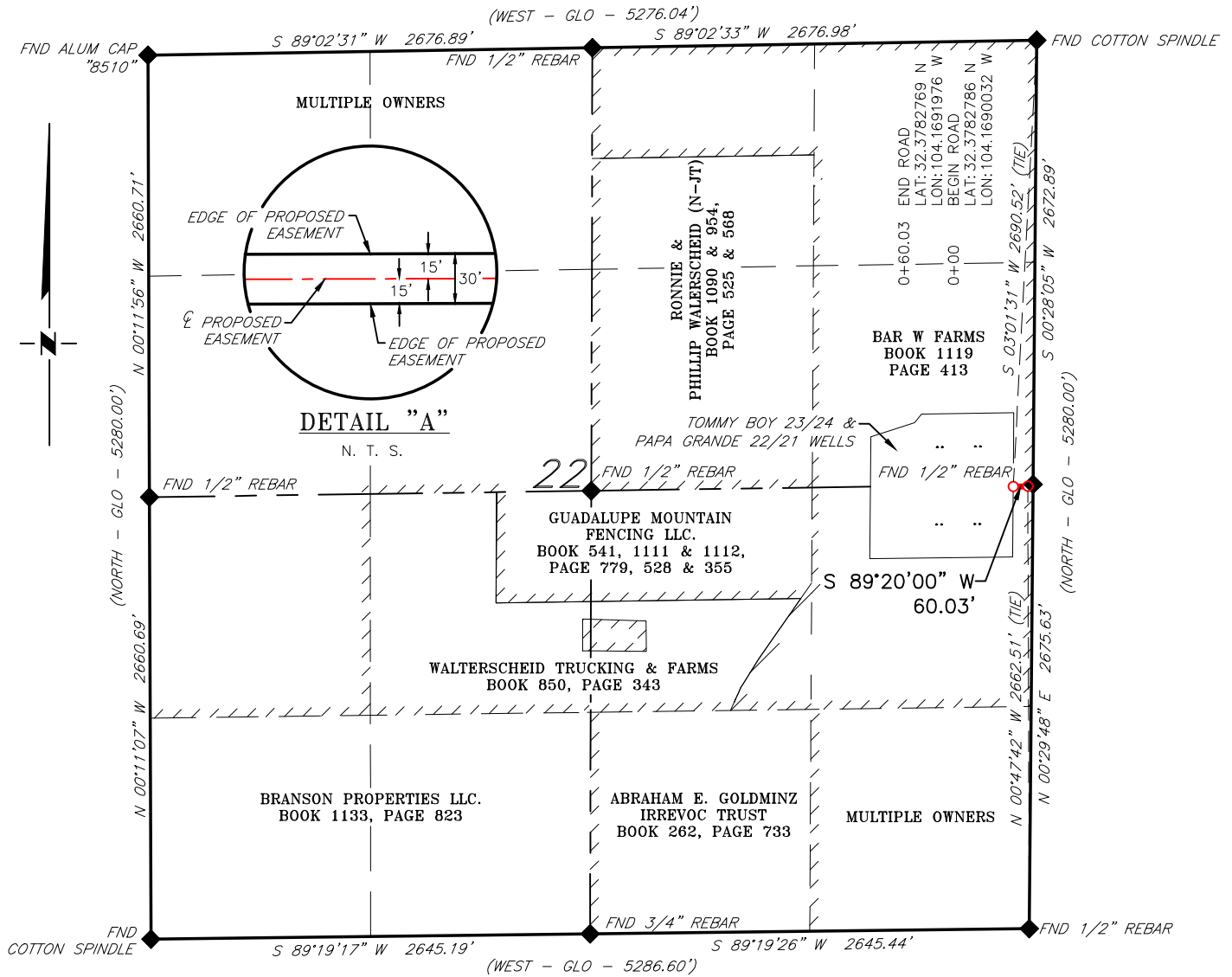
NO.	REVISION	DATE
JOB NO.: LS23010079		
DWG. NO.: 23010079-4		



701 S. CECIL ST., HOBBS, NM 88240 (575) 964-8200

SCALE: 1" = 200'
DATE: 01/27/2023
SURVEYED BY: ML/JV
DRAWN BY: AR
APPROVED BY: RMH
SHEET: 1 OF 1

**MEWBOURNE OIL COMPANY
PROPOSED ACCESS ROAD FOR THE TOMMY BOY 23/24 &
PAPA GRANDE 22/21 WELL LOCATIONS
SECTION 22, T22S, R27E
N. M. P. M., EDDY COUNTY, NEW MEXICO**



DESCRIPTION

A strip of land 30 feet wide, being 60.03 feet or 3.638 rods in length, lying in Section 22, Township 22 South, Range 27 East, N. M. P. M., Eddy County, New Mexico, being 15 feet left and 15 feet right of the following described survey of a centerline across the lands of Bar W. Farms, according to a deed filed for record in Book 1119, Page 413, of the Deed Records of Eddy County, New Mexico:

BEGINNING at Engr. Sta. 0+00, a point in the Southeast quarter of Section 22, which bears, N 00°47'42" W, 2,662.51 feet from a 1/2" rebar, found for the Southeast corner of Section 22;

Thence S 89°20'00" W, 60.03 feet, to Engr. Sta. 0+60.03, a point in the Southeast quarter of Section 22, which bears, S 03°01'31" W, 2,690.52 feet from a cotton spindle, found for the Northeast corner of Section 22.

Said strip of land contains 0.041 acres, more or less, and is allocated by forties as follows:

NE 1/4 SE 1/4 3.638 Rods 0.041 Acres

SCALE: 1" = 1000'
0 500' 1000'

BEARINGS ARE GRID NAD 83
NM EAST
DISTANCES ARE HORIZ. GROUND.

LEGEND

- () RECORD DATA - GLO
- ◆ FOUND MONUMENT AS NOTED
- ACCESS ROAD

I, R. M. Howett, a N. M. Professional Surveyor, hereby certify that I prepared this plat from an actual survey made on the ground under my direct supervision, said survey and plat meet the Min. Stds. for Land Surveying in the State of N. M. and are true and correct to the best of my knowledge and belief.

Robert M. Howett
Robert M. Howett NM PS 19680



Copyright 2016 - All Rights Reserved

NO.	REVISION	DATE
JOB NO.: LS20080371		
DWG. NO.: 20080371-5		

RRC

701 S. CECIL ST., HOBBS, NM 88240 (575) 964-8200

SCALE: 1" = 1000'
DATE: 08/21/2020
SURVEYED BY: ML/JH
DRAWN BY: GA
APPROVED BY: RMH
SHEET: 1 OF 1

District I
 1625 N. French Dr., Hobbs, NM 88240
 Phone:(575) 393-6161 Fax:(575) 393-0720
District II
 811 S. First St., Artesia, NM 88210
 Phone:(575) 748-1283 Fax:(575) 748-9720
District III
 1000 Rio Brazos Rd., Aztec, NM 87410
 Phone:(505) 334-6178 Fax:(505) 334-6170
District IV
 1220 S. St Francis Dr., Santa Fe, NM 87505
 Phone:(505) 476-3470 Fax:(505) 476-3462

State of New Mexico
Energy, Minerals and Natural Resources
Oil Conservation Division
1220 S. St Francis Dr.
Santa Fe, NM 87505

CONDITIONS

Action 183772

CONDITIONS

Operator: MEWBOURNE OIL CO P.O. Box 5270 Hobbs, NM 88241	OGRID: 14744
	Action Number: 183772
	Action Type: [C-103] NOI Change of Plans (C-103A)

CONDITIONS

Created By	Condition	Condition Date
kpickford	Adhere to previous NMOCD Conditions of Approval	2/8/2023