

District I

1625 N. French Dr., Hobbs, NM 88240
Phone:(575) 393-6161 Fax:(575) 393-0720

District II

811 S. First St., Artesia, NM 88210
Phone:(575) 748-1283 Fax:(575) 748-9720

District III

1000 Rio Brazos Rd., Aztec, NM 87410
Phone:(505) 334-6178 Fax:(505) 334-6170

District IV

1220 S. St Francis Dr., Santa Fe, NM 87505
Phone:(505) 476-3470 Fax:(505) 476-3462

State of New Mexico
Energy, Minerals and Natural Resources
Oil Conservation Division
1220 S. St Francis Dr.
Santa Fe, NM 87505

Form C-101
August 1, 2011

Permit 335542

APPLICATION FOR PERMIT TO DRILL, RE-ENTER, DEEPEN, PLUGBACK, OR ADD A ZONE

1. Operator Name and Address Franklin Mountain Energy 3, LLC 44 Cook Street Denver, CO 80206		2. OGRID Number 331595
		3. API Number 30-025-51162
4. Property Code 333825	5. Property Name NORTE STATE COM	6. Well No. 601H

7. Surface Location

UL - Lot D	Section 3	Township 19S	Range 35E	Lot Idn 4	Feet From 400	N/S Line N	Feet From 670	E/W Line W	County Lea
---------------	--------------	-----------------	--------------	--------------	------------------	---------------	------------------	---------------	---------------

8. Proposed Bottom Hole Location

UL - Lot D	Section 27	Township 18S	Range 35E	Lot Idn D	Feet From 150	N/S Line N	Feet From 825	E/W Line W	County Lea
---------------	---------------	-----------------	--------------	--------------	------------------	---------------	------------------	---------------	---------------

9. Pool Information

VACUUM;BONE SPRING, SOUTH	61900
SCHARB;BONE SPRING	55610

Additional Well Information

11. Work Type New Well	12. Well Type OIL	13. Cable/Rotary	14. Lease Type State	15. Ground Level Elevation 3867
16. Multiple Y	17. Proposed Depth 20265	18. Formation 3rd Bone Spring Sand	19. Contractor	20. Spud Date 5/1/2023
Depth to Ground water		Distance from nearest fresh water well		Distance to nearest surface water

☒ We will be using a closed-loop system in lieu of lined pits

21. Proposed Casing and Cement Program

Type	Hole Size	Casing Size	Casing Weight/ft	Setting Depth	Sacks of Cement	Estimated TOC
Surf	17.5	13.375	54.5	1900	1457	0
Int1	12.25	9.625	40	4000	841	0
Prod	8.75	7	32	9500	454	3000
Prod	8.75	5.5	20	20265	1024	9500

Casing/Cement Program: Additional Comments

Cementing Stage tool can be placed in the 1st Intermediate string as a contingency to ensure required TOC to surface. To increase efficiency of drilling operations and minimize disturbance of the area the batch-drilling approach will be used. Off-line cementing may be utilized for Surface and Intermediate strings to further optimization of drilling process and reduction of disturbance.
--

22. Proposed Blowout Prevention Program

Type	Working Pressure	Test Pressure	Manufacturer
Double Ram	10000	5000	Cactus

23. I hereby certify that the information given above is true and complete to the best of my knowledge and belief. I further certify I have complied with 19.15.14.9 (A) NMAC <input checked="" type="checkbox"/> and/or 19.15.14.9 (B) NMAC <input checked="" type="checkbox"/> if applicable.	OIL CONSERVATION DIVISION	
Signature:		
Printed Name: Electronically filed by Rachael A Overbey	Approved By: Paul F Kautz	
Title: Project Manager	Title: Geologist	
Email Address: roverbey@fmellc.com	Approved Date: 3/7/2023	Expiration Date: 3/7/2025
Date: 3/2/2023	Phone: 303-570-4057	Conditions of Approval Attached

District I

1625 N. French Dr., Hobbs, NM 88240
Phone:(575) 393-6161 Fax:(575) 393-0720

District II

811 S. First St., Artesia, NM 88210
Phone:(575) 748-1283 Fax:(575) 748-9720

District III

1000 Rio Brazos Rd., Aztec, NM 87410
Phone:(505) 334-6178 Fax:(505) 334-6170

District IV

1220 S. St Francis Dr., Santa Fe, NM 87505
Phone:(505) 476-3470 Fax:(505) 476-3462

State of New Mexico
Energy, Minerals and Natural Resources
Oil Conservation Division
1220 S. St Francis Dr.
Santa Fe, NM 87505

Form C-102
August 1, 2011

Permit 335542

WELL LOCATION AND ACREAGE DEDICATION PLAT

1. API Number 30-025-51162	2. Pool Code 61900	3. Pool Name VACUUM;BONE SPRING, SOUTH
4. Property Code 333825	5. Property Name NORTE STATE COM	6. Well No. 601H
7. OGRID No. 331595	8. Operator Name Franklin Mountain Energy 3, LLC	9. Elevation 3867

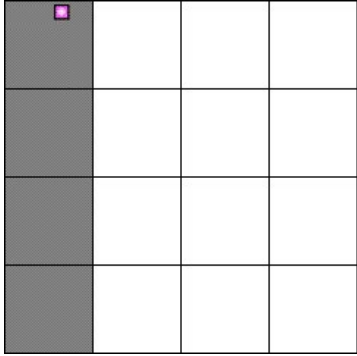
10. Surface Location

UL - Lot D	Section 3	Township 19S	Range 35E	Lot Idn 4	Feet From 400	N/S Line N	Feet From 670	E/W Line W	County Lea
---------------	--------------	-----------------	--------------	--------------	------------------	---------------	------------------	---------------	---------------

11. Bottom Hole Location If Different From Surface

UL - Lot D	Section 27	Township 18S	Range 35E	Lot Idn	Feet From 150	N/S Line N	Feet From 825	E/W Line W	County Lea
12. Dedicated Acres 159.67	13. Joint or Infill	14. Consolidation Code	15. Order No.						

NO ALLOWABLE WILL BE ASSIGNED TO THIS COMPLETION UNTIL ALL INTERESTS HAVE BEEN CONSOLIDATED OR A NON-STANDARD UNIT HAS BEEN APPROVED BY THE DIVISION

	<p style="text-align: center;">OPERATOR CERTIFICATION</p> <p><i>I hereby certify that the information contained herein is true and complete to the best of my knowledge and belief, and that this organization either owns a working interest or unleased mineral interest in the land including the proposed bottom hole location(s) or has a right to drill this well at this location pursuant to a contract with an owner of such a mineral or working interest, or to a voluntary pooling agreement or a compulsory pooling order heretofore entered by the division.</i></p> <p>E-Signed By: Rachael A Overbey Title: Project Manager Date: 3/2/2023</p> <hr/> <p style="text-align: center;">SURVEYOR CERTIFICATION</p> <p><i>I hereby certify that the well location shown on this plat was plotted from field notes of actual surveys made by me or under my supervision, and that the same is true and correct to the best of my belief.</i></p> <p>Surveyed By: Paul Buchele Date of Survey: 1/19/2023 Certificate Number: 23782</p>
---	---

District I

1625 N. French Dr., Hobbs, NM 88240
Phone:(575) 393-6161 Fax:(575) 393-0720

District II

811 S. First St., Artesia, NM 88210
Phone:(575) 748-1283 Fax:(575) 748-9720

District III

1000 Rio Brazos Rd., Aztec, NM 87410
Phone:(505) 334-6178 Fax:(505) 334-6170

District IV

1220 S. St Francis Dr., Santa Fe, NM 87505
Phone:(505) 476-3470 Fax:(505) 476-3462

State of New Mexico
Energy, Minerals and Natural Resources
Oil Conservation Division
1220 S. St Francis Dr.
Santa Fe, NM 87505

Form C-102
August 1, 2011

Permit 335542

WELL LOCATION AND ACREAGE DEDICATION PLAT

1. API Number 30-025-51162	2. Pool Code 55610	3. Pool Name SCHARB;BONE SPRING
4. Property Code 333825	5. Property Name NORTE STATE COM	6. Well No. 601H
7. OGRID No. 331595	8. Operator Name Franklin Mountain Energy 3, LLC	9. Elevation 3867

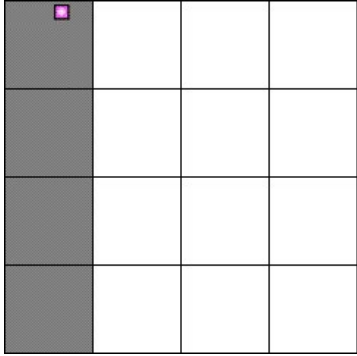
10. Surface Location

UL - Lot D	Section 3	Township 19S	Range 35E	Lot Idn 4	Feet From 400	N/S Line N	Feet From 670	E/W Line W	County Lea
---------------	--------------	-----------------	--------------	--------------	------------------	---------------	------------------	---------------	---------------

11. Bottom Hole Location If Different From Surface

UL - Lot D	Section 27	Township 18S	Range 35E	Lot Idn D	Feet From 150	N/S Line N	Feet From 825	E/W Line W	County Lea
12. Dedicated Acres 160.00	13. Joint or Infill		14. Consolidation Code				15. Order No.		

NO ALLOWABLE WILL BE ASSIGNED TO THIS COMPLETION UNTIL ALL INTERESTS HAVE BEEN CONSOLIDATED OR A NON-STANDARD UNIT HAS BEEN APPROVED BY THE DIVISION

	<p style="text-align: center;">OPERATOR CERTIFICATION</p> <p><i>I hereby certify that the information contained herein is true and complete to the best of my knowledge and belief, and that this organization either owns a working interest or unleased mineral interest in the land including the proposed bottom hole location(s) or has a right to drill this well at this location pursuant to a contract with an owner of such a mineral or working interest, or to a voluntary pooling agreement or a compulsory pooling order heretofore entered by the division.</i></p> <p>E-Signed By: Rachael A Overbey Title: Project Manager Date: 3/2/2023</p> <hr/> <p style="text-align: center;">SURVEYOR CERTIFICATION</p> <p><i>I hereby certify that the well location shown on this plat was plotted from field notes of actual surveys made by me or under my supervision, and that the same is true and correct to the best of my belief.</i></p> <p>Surveyed By: Paul Buchele Date of Survey: 1/19/2023 Certificate Number: 23782</p>
---	---

District I

1625 N. French Dr., Hobbs, NM 88240
 Phone:(575) 393-6161 Fax:(575) 393-0720

District II

811 S. First St., Artesia, NM 88210
 Phone:(575) 748-1283 Fax:(575) 748-9720

District III

1000 Rio Brazos Rd., Aztec, NM 87410
 Phone:(505) 334-6178 Fax:(505) 334-6170

District IV

1220 S. St Francis Dr., Santa Fe, NM 87505
 Phone:(505) 476-3470 Fax:(505) 476-3462

State of New Mexico
Energy, Minerals and Natural Resources
Oil Conservation Division
1220 S. St Francis Dr.
Santa Fe, NM 87505

Form APD Conditions

Permit 335542

PERMIT CONDITIONS OF APPROVAL

Operator Name and Address: Franklin Mountain Energy 3, LLC [331595] 44 Cook Street Denver, CO 80206	API Number: 30-025-51162
	Well: NORTE STATE COM #601H

OCD Reviewer	Condition
pkautz	Notify OCD 24 hours prior to casing & cement
pkautz	Will require a File As Drilled C-102 and a Directional Survey with the C-104
pkautz	Once the well is spud, to prevent ground water contamination through whole or partial conduits from the surface, the operator shall drill without interruption through the fresh water zone or zones and shall immediately set in cement the water protection string
pkautz	Oil base muds are not to be used until fresh water zones are cased and cemented providing isolation from the oil or diesel. This includes synthetic oils. Oil based mud, drilling fluids and solids must be contained in a steel closed loop system
pkautz	Cement is required to circulate on both surface and intermediate1 strings of casing
pkautz	The Operator is to notify NMOCD by sundry (Form C-103) within ten (10) days of the well being spud



Norte State Com 601H

1. Geologic name of surface location: Permian

2. Estimated tops of important geological markers:

Formations	PROG SS	PROG TVD	Picked TVD	delta	Potential/Issues
Cenozoic Alluvium (surface)	3,855'	30'	30'	0	Sand/Gravels/unconsolidated
Rustler	2,078	1,808'			Carbonates
Salado	1,838	2,047'			Salt, Carbonate & Clastics
Base Salt	925	2,960'			Shaley Carbonate & Shale
Yates	525	3,360'			Carbonate & Clastics
Seven Rivers	76	3,809'			Sandstone - oil/gas/water
Queen	-684	4,569'			Sandstone - oil/gas/water
Cherry Canyon	-2,168	6,053'			Sand/carb/shales - oil/gas/water
Bone Spring Lime	-3,617	7,502'			Shale/Carbonates - oil/gas
First Bone Spring Sand	-5,198	9,083'			Shale/Carbonates - oil/gas
Second Bone Spring Carbonates	-5,464	9,350'			Chert/Carbonate
Second Bone Spring Sand	-5,656	9,541'			Sandstone - oil/gas/water
Third Bone Spring Carbonates	-6,056	9,941'			Shale/Carbonates - oil/gas
Third Bone Spring Sand	-6,121	10,007'			Sandstone - oil/gas/water
HZ Target	-6,195	10,080'			Sandstone - oil/gas/water
Wolfcamp	-6,274	10,159'			Overpressure shale/sand- Oil/Gas

3. Estimated depth of anticipated fresh water, oil or gas:

Upper Permian Sands	0- 400'	Fresh Water
Delaware Sands	6,053'	Oil
1 st Bone Spring Sand	9,083'	Oil
2 nd Bone Spring Sand	9,541'	Oil
3 rd Bone Spring Sand	10,007'	Oil

No other formations are expected to give up oil, gas or fresh water in measurable quantities. Surface freshwater sands will be protected by setting 13 3/8" casing at 1,900' and circulating cement back to surface.

4. Casing Program:

All casing strings will be run new.

Casing string	Weight	Grade	Burst	Collapse	Tension	Conn	Length	API design factor			
								Burst	Collapse	Tension	Coupling
Surface 13 3/8"	54.5	J-55	2730	1130	853	BTC 909	1900	1.02	1.14	4.19	4.47
0-1,900'											
Intermediate 9 5/8"	40	HCL-80	7430	4230	916	BTC 1042	4000	2.08	2.26	3.52	4.01
0-4,000'											
Production 7"	32	HCP-110	12460	10760	1025	CDC-HTQ 1053	9500	2.10	2.42	2.54	2.61
0-9,500'											
Production 5 1/2"	20	HCP-110	12640	12200	641	CDC-HTQ 667	10765	1.15	2.42	2.03	2.12
9,500'-20,265'						TVD 10080	10080				2.21

Tapered production string will be ran with a X-over installed at the KOP of 9,500'.



Cementing Program:

Cementing Stage tool can be placed in the 1st Intermediate string as a contingency to ensure required TOC to surface.

To increase efficiency of drilling operations and minimize disturbance of the area the batch-drilling approach will be used.

Off-line cementing may be utilized for Surface and Intermediate strings to further optimization of drilling process and reduction of disturbance.

String Type	Hole Size	Casing Size	Setting Depth	Sacks	Type of cmt	Lead Yield ft ³ /sk	Water gal/sk	TOC ft	Sacks	Type of cmt	Tail Yield ft ³ /sk	Water gal/sk	TOC	Excess
Surf	17.5	13.375	1900	1016	85:15 Compass Poz, 12.8 ppg Class C, 5%Gel, 3#/sk Kol Seal, 4.64#/sk Salt	2.05	11.12	0	441	Tail, 14.8 ppg, 100% Class C, 1%CaCl ₂ , 0.1%	1.34	6.35	1500	100%
Int	12.25	9.625	4000	640	Lead, 11.3 ppg, HSLD 82 10% Gel, 4%STE, 2#/sk, Gyp Seal	2.74	16.31	0	201	Econolite Tail, 14.8 ppg, 100% Class C, 0.08% C-51	1.33	6.33	3600	100%
Prod	8.75	7	0-9500	454	HSLD 9420, 10.5 ppg, Class C, 1#/sk Salt, 4% STE 1% C-45	3.99	25.51	3000						100%
Prod	8.75	5.5	9500-20265						1024	HSLD 80, 13.ppg , 32#/sk Salt, 4% STE, 1#/sk Gyp Seal	1.52	7.59	9500	50%

5. Minimum Specifications for Pressure Control:

The minimum blowout preventer equipment (BOPE) shown in Exhibit #1 will consist of a single ram, mud cross and double ram-type (10,000 psi WP) preventer and an annular preventer (5,000-psi WP). Both units will be hydraulically operated, and the ram-type will be equipped with blind rams on bottom and 4 ½" x 7" variable pipe rams on top. All BOPE will be tested in accordance with Onshore Oil & Gas order No. 2.

Before drilling out of the surface casing, the ram-type BOP and accessory equipment will be tested to 5,000/250 psig and the annular preventer to 5,000/250 psig. The surface casing will be tested to 1500 psi for 30 minutes.

Before drilling out of the intermediate casing, the ram-type BOP and accessory equipment will be tested to 10,000/250 psig and the annular preventer to 5,000/250 psig.

Pipe rams will be operationally checked each 24-hour period. Blind rams will be operationally checked on each trip out of the hole. These checks will be noted on the daily tour sheets.

A hydraulically operated choke will be installed prior to drilling out of the intermediate casing shoe.



6. Types and characteristics of the proposed mud system:

During this procedure we plan to use a Closed-Loop System and haul contents to the required disposal. The applicable depths and properties of the drilling fluid systems are as follows.

Depth	Type	Weight (ppg)	Viscosity	Water Loss
0 – 1,900'	Fresh - Gel	8.6-8.8	28-34	N/c
1,900' – 4,000'	Brine	8.8-10.2	28-34	N/c
4,000' – 20,265' Lateral	Oil Base	9.0-11.0	58-68	3 - 6

The highest mud weight needed to balance formation is expected to be 10-11 ppg. In order to maintain hole stability, mud weights up to 12 ppg may be utilized.

An electronic pit volume totalizer (PVT) will be utilized on the circulating system, to monitor pit volume, flow rate, pump pressure and stroke rate.

Sufficient mud materials to maintain mud properties and meet minimum lost circulation and weight increase requirements will be kept at the wellsite at all times.

7. Auxiliary well control and monitoring equipment:

(A) A kelly cock will be kept in the drill string at all times.

(B) A full opening drill pipe-stabbing valve (inside BOP) with proper drill pipe connections will be on the rig floor at all times.

(C) H2S monitoring and detection equipment will be utilized from surface casing point to TD.

(D) A wear bushing will be installed in the wellhead prior to drilling out of the surface casing.

8. Logging, testing and coring program:

GR-CCL-CNL Will be run in cased hole during completions phase of operations.

Open-hole logs are not planned for this well.

9. Abnormal conditions, pressures, temperatures and potential hazards:

The estimated bottom-hole temperature at 10,080' TVD (deepest point of the well) is 160F with an estimated maximum bottom-hole pressure (BHP) at the same point of 6,290 psig (based on 12 ppg MW). Hydrogen Sulfide may be present in the area. All necessary precautions will be taken before drilling operations commence. See Hydrogen Sulfide Plan below:

10. Hydrogen Sulfide Plan:

- A. All personnel shall receive proper awareness H2S training.
- B. Briefing Area: two perpendicular areas will be designated by signs and readily accessible.
- C. Required Emergency Equipment
 - a. Well Control Equipment
 - i. Flare line 150' from wellhead to be ignited by auto ignition sparking system.
 - ii. Choke manifold with a remotely operated hydraulic choke.
 - iii. Mud/gas separator
 - b. Protective equipment for essential personnel
 - i. Breathing Apparatus
 1. Rescue packs (SCBA) – 1 unit shall be placed at each briefing area, 2 shall be stored in a safety trailer on site.



2. Work/Escapes packs – 4 packs shall be stored on the rig floor with sufficient air hose not to restrict work activity
3. Emergency Escape Packs – 4 packs shall be stored in the doghouse for emergency evacuation.
- ii. Auxiliary Rescue Equipment
 1. Stretcher
 2. Two OSHA full body harnesses
 3. 100 feet of 5/8 inches OSHA approved rope
 4. 1-20# class ABC fire extinguisher
- c. H₂S Detection and Monitoring Equipment
 - i. A stationary detector with three sensors will be placed in the doghouse if equipped, set to visually alarm at 10 ppm and audible at 14 ppm. The detector will be calibrated a minimum of every 30 days or as needed. The sensors will be placed in the following places:
 1. Rig Floor
 2. Below Rig Floor / Near BOPs
 3. End of flow line or where well bore fluid is being discharged (near shakers)
 - ii. If H₂S is encountered, measured values and formations will be provided to the BLM.
- d. Visual Warning Systems
 - i. One color code condition sign will be placed at the entrance to the site reflecting the possible conditions at the site.
 - ii. A colored condition flag will be on display, reflecting the current condition at the site at the time.
 - iii. Two windsocks will be placed in strategic locations, visible from all angles.
- e. Mud Program
 - i. The Mud program will be designed to minimize the volume of H₂S circulated to surface. The operator will have the necessary mud products to minimize hazards while drilling in H₂S bearing zones.
- f. Metallurgy
 - i. All drill strings, casings, tubing, wellhead, blowout preventer, drilling spool, kill lines, choke manifold and lines, and valves shall be suitable for H₂S service at the anticipated operating pressures to prevent sour sulfide stress cracking.
- g. Communication
 - i. Communication will be via cell phones and walkie talkies on location.

Based on concentrations of offset wells, proximity to main roads, and distance to populated areas, the radius of exposure created by a potential release was determined to be minimal and low enough to not necessitate an H₂S contingency plan. This will be reevaluated during wellbore construction if H₂S is observed and after the well is on production.

**11. Anticipated starting date and duration of operations:**

The drilling operations on the well should be finished in approximately one month. However, in order to minimize disturbance in the area and to improve efficiency Franklin Mountain is planning to drill all the wells on the pad prior to commence completion operations. To even further reduce the time heavy machinery is used the "batch drilling" method may be used. A batch drilling sequence sundry will be submitted for State approval prior to spud. A drilling rig with walking/skidding capabilities will be used.

12. Disposal/environmental concerns:

- (A) Drilled cuttings will be hauled to and disposed of in a state-certified disposal site.
- (B) Non-hazardous waste mud/cement from the drilling process will also be hauled to and disposed of in a state-certified disposal site.
- (C) Garbage will be hauled to the Pecos City Landfill.
- (D) Sewage (grey water) will be hauled to the Carlsbad City Landfill

13. Wellhead:

A multi-bowl wellhead system will be utilized.

After running the 13 3/8" surface casing, a 13-5/8" BOP/BOPE system with a minimum working pressure of 10,000 psi will be installed on the wellhead system and will be pressure tested to 250 psi low followed by a 5,000 psi pressure test. This pressure test will be repeated at least every 21 days.

The minimum working pressure of the BOP and related BOPE required for drilling below the surface casing shoe shall be 5,000 psi.

The wellhead will be installed by a third party welder while being monitored by WH vendor's representative.

All BOP equipment will be tested utilizing a conventional test plug. Not a cup or J-packer type.

A solid steel body pack-off will be utilized after running and cementing the intermediate casing string. After installation of the first intermediate string the pack-off and lower flanges will be pressure tested to 5000 psi.

Both the surface and intermediate casing strings will be tested as per NMOCD Rules to the one-third of manufacture's rated yield pressure, no less than 600 psi, but not greater than 1,500 psi.

14. Additional variance requests

A. Casing.

1. Variance is requested to wave/reduce the centralizer requirements for the 7" and 5 1/2" production casing due to the tight clearance with 8 3/4" hole.

District I
1625 N. French Dr., Hobbs, NM 88240
Phone: (575) 393-6161 Fax: (575) 393-0720

District II
811 S. First St., Artesia, NM 88210
Phone: (575) 748-1283 Fax: (575) 748-9720

District III
1000 Rio Brazos Road, Aztec, NM 87410
Phone: (505) 334-6178 Fax: (505) 334-6170

District IV
1220 S. St. Francis Dr., Santa Fe, NM 87505
Phone: (505) 476-3460 Fax: (505) 476-3462

State of New Mexico
Energy, Minerals & Natural Resources Department
OIL CONSERVATION DIVISION
1220 South St. Francis Dr.
Santa Fe, NM 87505

Form C-102
Revised August 1, 2011
Submit one copy to appropriate
District Office

AMENDED REPORT

WELL LOCATION AND ACREAGE DEDICATION PLAT

¹ API Number 30-025-51162	² Pool Code 61900	³ Pool Name VACUUM;BONE SPRING, SOUTH
⁴ Property Code 333825	⁵ Property Name NORTE STATE COM	⁶ Well Number 601H
⁷ OGRID No. 331595	⁸ Operator Name FRANKLIN MOUNTAIN ENERGY 3, LLC	⁹ Elevation 3867.5'

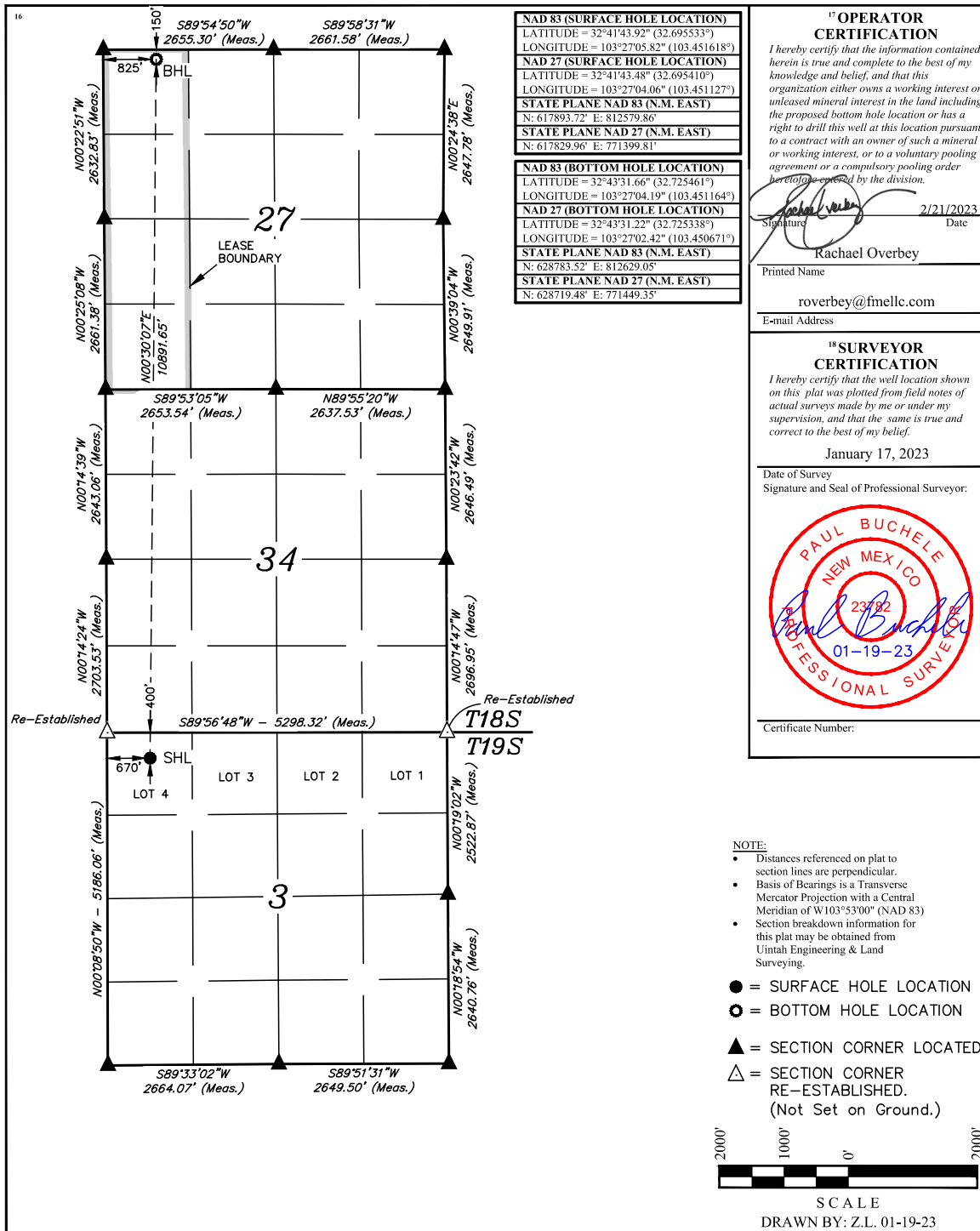
¹⁰Surface Location

UL or lot no. 4	Section 3	Township 19S	Range 35E	Lot Idn	Feet from the 400	North/South line NORTH	Feet from the 670	East/West line WEST	County LEA
--------------------	--------------	-----------------	--------------	---------	----------------------	---------------------------	----------------------	------------------------	---------------

¹¹ Bottom Hole Location If Different From Surface

UL or lot no. D	Section 27	Township 18S	Range 35E	Lot Idn	Feet from the 150	North/South line NORTH	Feet from the 825	East/West line WEST	County LEA
¹² Dedicated Acres 160	¹³ Joint or Infill		¹⁴ Consolidation Code		¹⁵ Order No.				

No allowable will be assigned to this completion until all interests have been consolidated or a non-standard unit has been approved by the division.



District I
1625 N. French Dr., Hobbs, NM 88240
Phone: (575) 393-6161 Fax: (575) 393-0720
District II
811 S. First St., Artesia, NM 88210
Phone: (575) 748-1283 Fax: (575) 748-9720
District III
1000 Rio Brazos Road, Aztec, NM 87410
Phone: (505) 334-6178 Fax: (505) 334-6170
District IV
1220 S. St. Francis Dr., Santa Fe, NM 87505
Phone: (505) 476-3460 Fax: (505) 476-3462

State of New Mexico
Energy, Minerals & Natural Resources Department
OIL CONSERVATION DIVISION
1220 South St. Francis Dr.
Santa Fe, NM 87505

Form C-102
Revised August 1, 2011
Submit one copy to appropriate
District Office

☐ AMENDED REPORT

WELL LOCATION AND ACREAGE DEDICATION PLAT

¹ APl Number 30-025-51162	² Pool Code 55610	³ Pool Name SCHARB;BONE SPRING
⁴ Property Code 333825	⁵ Property Name NORTE STATE COM	⁶ Well Number 601H
⁷ OGRID No. 331595	⁸ Operator Name FRANKLIN MOUNTAIN ENERGY 3, LLC	⁹ Elevation 3867.5'

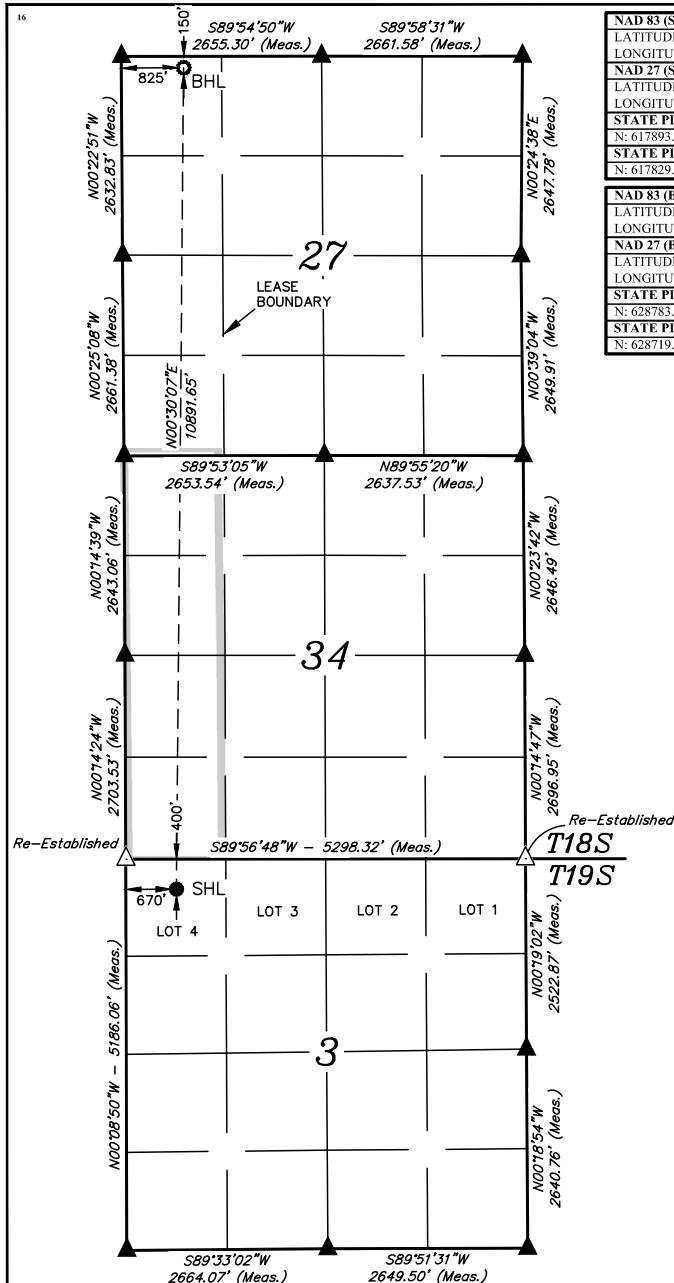
¹⁰ Surface Location

UL or lot no.	Section	Township	Range	Lot Idn	Feet from the	North/South line	Feet from the	East/West line	County
4	3	19S	35E		400	NORTH	670	WEST	LEA

¹¹ Bottom Hole Location If Different From Surface

UL or lot no.	Section	Township	Range	Lot Idn	Feet from the	North/South line	Feet from the	East/West line	County
D	27	18S	35E		150	NORTH	825	WEST	LEA
¹² Dedicated Acres 160	¹³ Joint or Infill	¹⁴ Consolidation Code	¹⁵ Order No.						

No allowable will be assigned to this completion until all interests have been consolidated or a non-standard unit has been approved by the division.



NAD 83 (SURFACE HOLE LOCATION) LATITUDE = 32°41'43.92" (32.695533°) LONGITUDE = 103°27'05.82" (103.451618°) NAD 27 (SURFACE HOLE LOCATION) LATITUDE = 32°41'43.48" (32.695410°) LONGITUDE = 103°27'04.06" (103.451127°) STATE PLANE NAD 83 (N.M. EAST) N: 617893.72' E: 812579.86' STATE PLANE NAD 27 (N.M. EAST) N: 617829.96' E: 771399.81'
NAD 83 (BOTTOM HOLE LOCATION) LATITUDE = 32°43'31.66" (32.725461°) LONGITUDE = 103°27'04.19" (103.451164°) NAD 27 (BOTTOM HOLE LOCATION) LATITUDE = 32°43'31.22" (32.725338°) LONGITUDE = 103°27'02.42" (103.450671°) STATE PLANE NAD 83 (N.M. EAST) N: 628783.52' E: 812629.05' STATE PLANE NAD 27 (N.M. EAST) N: 628719.48' E: 771449.35'

¹⁷ OPERATOR
CERTIFICATION

I hereby certify that the information contained herein is true and complete to the best of my knowledge and belief, and that this organization either owns a working interest or unleased mineral interest in the land including the proposed bottom hole location or has a right to drill this well at this location pursuant to a contract with an owner of such a mineral or working interest, or to a voluntary pooling agreement or a compulsory pooling order heretofore entered by the division.

Signature: *Rachael Overbey* Date: 2/21/2023

Printed Name: Rachael Overbey

E-mail Address: roverbey@finelc.com

E-mail Address: roverbey@finelc.com

¹⁸ SURVEYOR
CERTIFICATION

I hereby certify that the well location shown on this plat was plotted from field notes of actual surveys made by me or under my supervision, and that the same is true and correct to the best of my belief.

January 17, 2023

Date of Survey
Signature and Seal of Professional Surveyor:



Certificate Number:

NOTE:

- Distances referenced on plat to section lines are perpendicular.
- Basis of Bearings is a Transverse Mercator Projection with a Central Meridian of W 103°53'00" (NAD 83)
- Section breakdown information for this plat may be obtained from Uintah Engineering & Land Surveying.

● = SURFACE HOLE LOCATION

○ = BOTTOM HOLE LOCATION

▲ = SECTION CORNER LOCATED

△ = SECTION CORNER RE-ESTABLISHED.
(Not Set on Ground.)



SCALE

DRAWN BY: Z.L. 01-19-23

Project: Lea County, NM (NAD83)
 Site: Sec 3-T19S-R35E (Eagle/Norte State)
 Well: Norte State Com 601H
 Wellbore: OH
 Design: Plan #1
 Rig:



Azimuths to Grid North
 True North: -0.48°
 Magnetic North: 5.74°

Magnetic Field
 Strength: 47650.3nT
 Dip Angle: 60.52°
 Date: 2/17/2023
 Model: HDGM2023

Total Magnetic Correction: 5.74°

PROJECT DETAILS: Lea County, NM (NAD83)

Geodetic System: US State Plane 1983
 Datum: North American Datum 1983
 Ellipsoid: GRS 1980
 Zone: New Mexico Eastern Zone

Reference Datum: GE 3855' + KB 30' @ 3885.00usft

FORMATION TOP DETAILS

TVDPath	MDPath	Formation
30.00	30.00	Cenozoic Alluvium (surface)
1808.00	1808.00	Rustler
2047.00	2047.00	Salado
2960.00	2960.91	Base Salt
3360.00	3362.44	Yates
3809.00	3813.15	Seven Rivers
4569.00	4576.30	Queen
6053.00	6080.04	Cherry Canyon
7502.00	7543.93	Bone Spring Lime
9083.00	9124.93	First Bone Spring Sand
9350.00	9391.93	Second Bone Spring Carbonates
9541.00	9582.95	Second Bone Spring Sand
9941.00	10041.33	Third Bone Springs Carbonates
10007.00	10156.58	Third Bone Springs Sand
10080.00	10448.97	HZ Target at Landing

SHL

RKB Elevation: GE 3855' + KB 30' @ 3885.00usft

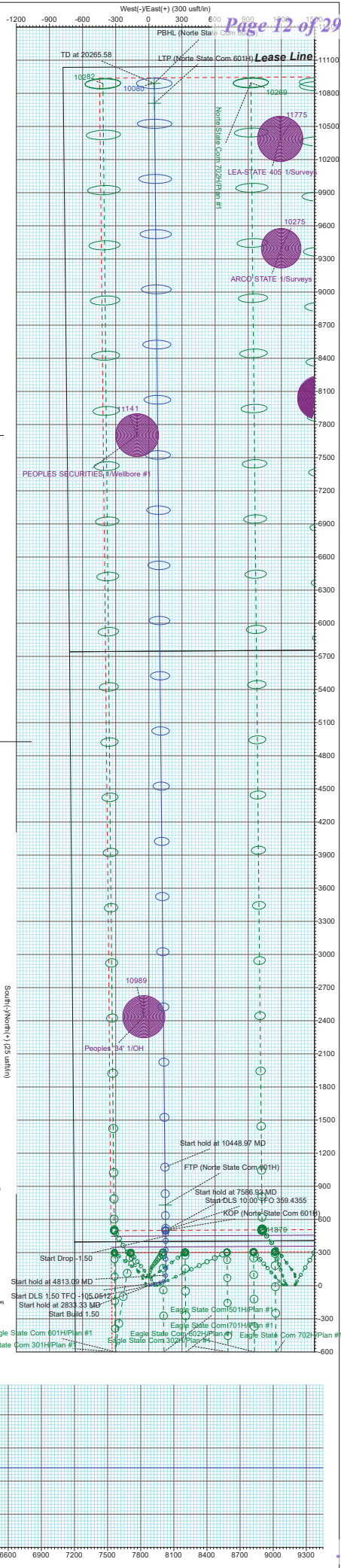
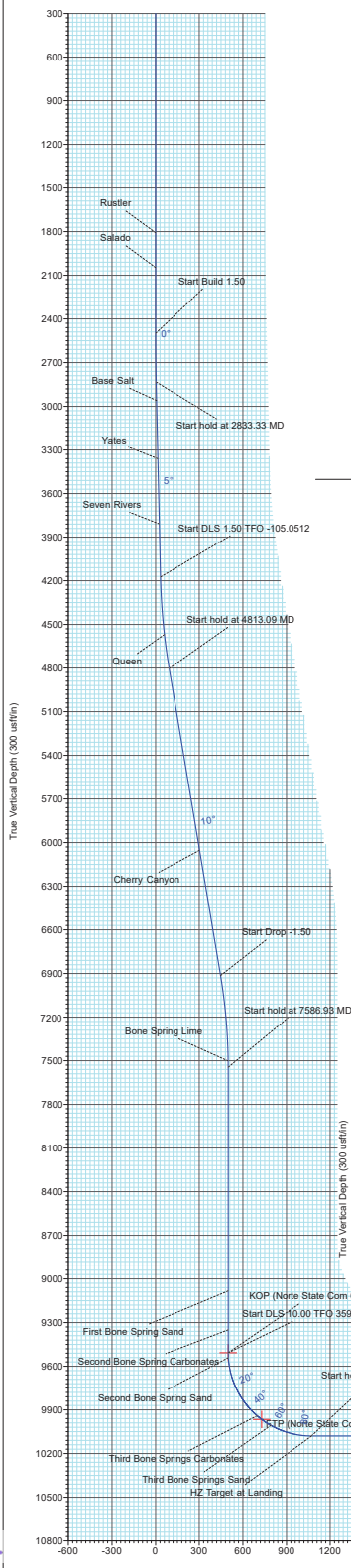
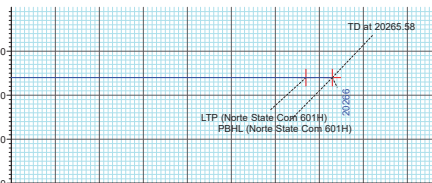
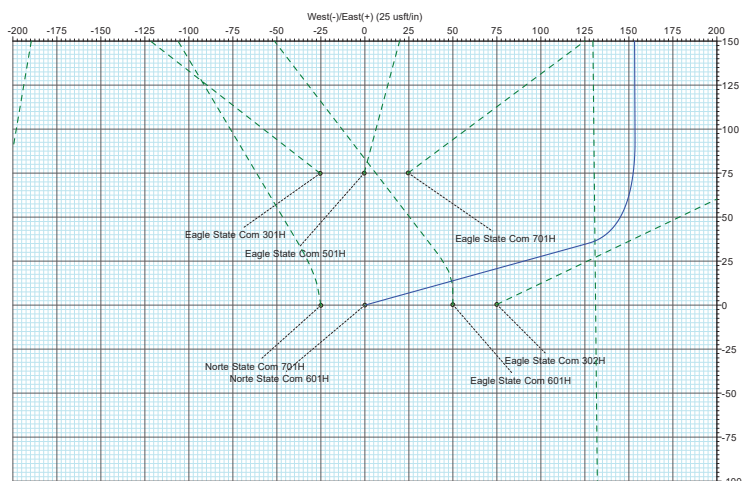
+N/-S	+E/-W	Northing	Easting	Latitude	Longitude	Slot
0.00	0.00	617893.72	812579.86	32.6955333	-103.4516179	

SECTION DETAILS

MD	Inc	Azi	TVD	+N/-S	+E/-W	Dleg	TFace	VSecl	Target
0.00	0.00	0.00	0.00	0.00	0.00	0.00	0.0000	0.00	
2500.00	0.00	0.00	2500.00	0.00	0.00	0.00	0.0000	0.00	
2833.33	5.00	74.52	2832.91	3.88	14.01	1.50	74.5237	3.74	
4180.00	5.00	74.52	4174.45	35.20	127.12	0.00	0.0000	33.94	
4813.09	9.50	359.72	4803.43	94.96	153.52	1.50	105.0512	93.43	
6953.40	9.50	359.72	6914.37	448.31	151.80	0.00	0.0000	446.79	
7586.93	0.00	359.52	7545.00	500.73	151.54	1.50	180.0000	499.21	
9548.97	0.00	359.52	9507.04	500.73	151.54	0.00	0.0000	499.21	
10448.97	90.00	359.44	10080.00	1073.66	145.90	10.00	359.4355	1072.17	
20265.58	90.00	359.44	10080.00	10889.80	49.19	0.00	0.0000	10888.78	PBHL (Norte State Com 601H)

WELLBORE TARGET DETAILS

Name	TVD	+N/-S	+E/-W	Northing	Easting	Latitude	Longitude
KOP (Norte State Com 601H)	9507.04	500.73	151.54	618394.45	812731.40	32.6969061	-103.4511118
FTP (Norte State Com 601H)	9966.02	730.72	149.28	618624.44	812729.14	32.6975382	-103.4511130
LTP (Norte State Com 601H)	10080.00	10709.79	50.96	628603.51	812630.82	32.7249666	-103.4511626
PBHL (Norte State Com 601H)	10080.00	10889.80	49.19	628783.52	812629.05	32.7254614	-103.4511635



Franklin Mountain Energy

Lea County, NM (NAD83)

Sec 3-T19S-R35E (Eagle/Norte State)

Norte State Com 601H

OH

Plan: Plan #1

Standard Planning Report - Geographic

21 February, 2023



Total Directional Planning Report - Geographic



Database:	EDM 5000.1 Single User Db	Local Co-ordinate Reference:	Well Norte State Com 601H
Company:	Franklin Mountain Energy	TVD Reference:	GE 3855' + KB 30' @ 3885.00usft
Project:	Lea County, NM (NAD83)	MD Reference:	GE 3855' + KB 30' @ 3885.00usft
Site:	Sec 3-T19S-R35E (Eagle/Norte State)	North Reference:	Grid
Well:	Norte State Com 601H	Survey Calculation Method:	Minimum Curvature
Wellbore:	OH		
Design:	Plan #1		

Project	Lea County, NM (NAD83)		
Map System:	US State Plane 1983	System Datum:	Mean Sea Level
Geo Datum:	North American Datum 1983		
Map Zone:	New Mexico Eastern Zone		

Site						Sec 3-T19S-R35E (Eagle/Norte State)											
Site Position:						Northing:			617,968.58 usft			Latitude:			32.6957397		
From:			Map			Easting:			812,554.48 usft			Longitude:			-103.4516984		
Position Uncertainty:			0.00 usft			Slot Radius:			13-3/16 "								

Well	Norte State Com 601H					
Well Position	+N/-S	0.00 usft	Northing:	617,893.72 usft	Latitude:	32.6955334
	+E/-W	0.00 usft	Easting:	812,579.86 usft	Longitude:	-103.4516179
Position Uncertainty		0.00 usft	Wellhead Elevation:	usft	Ground Level:	3,855.00 usft
Grid Convergence:	0.4763 °					

Wellbore	OH				
Magnetics	Model Name	Sample Date	Declination (°)	Dip Angle (°)	Field Strength (nT)
	HDGM2023	2/17/2023	6.2167	60.5167	47,650.30000000

Design	Plan #1			
Audit Notes:				
Version:	Phase:	PLAN	Tie On Depth:	0.00
Vertical Section:	Depth From (TVD) (usft)	+N/-S (usft)	+E/-W (usft)	Direction (°)
	0.00	0.00	0.00	359.43

Plan Survey Tool Program	Date	2/20/2023		
Depth From (usft)	Depth To (usft)	Survey (Wellbore)	Tool Name	Remarks
1	0.00	20,264.85 Plan #1 (OH)	MWD+HDGM OWSG MWD + HDGM	

Total Directional
Planning Report - Geographic



Database:	EDM 5000.1 Single User Db	Local Co-ordinate Reference:	Well Norte State Com 601H
Company:	Franklin Mountain Energy	TVD Reference:	GE 3855' + KB 30' @ 3885.00usft
Project:	Lea County, NM (NAD83)	MD Reference:	GE 3855' + KB 30' @ 3885.00usft
Site:	Sec 3-T19S-R35E (Eagle/Norte State)	North Reference:	Grid
Well:	Norte State Com 601H	Survey Calculation Method:	Minimum Curvature
Wellbore:	OH		
Design:	Plan #1		

Plan Sections										
Measured Depth (usft)	Inclination (°)	Azimuth (°)	Vertical Depth (usft)	+N/-S (usft)	+E/-W (usft)	Dogleg Rate (°/100usft)	Build Rate (°/100usft)	Turn Rate (°/100usft)	TFO (°)	Target
0.00	0.00	0.00	0.00	0.00	0.00	0.00	0.00	0.00	0.0000	
2,500.00	0.00	0.00	2,500.00	0.00	0.00	0.00	0.00	0.00	0.0000	
2,833.33	5.00	74.52	2,832.91	3.88	14.01	1.50	1.50	0.00	74.5237	
4,180.00	5.00	74.52	4,174.45	35.20	127.12	0.00	0.00	0.00	0.0000	
4,813.09	9.50	359.72	4,803.43	94.96	153.52	1.50	0.71	-11.82	-105.0512	
6,953.40	9.50	359.72	6,914.37	448.31	151.80	0.00	0.00	0.00	0.0000	
7,586.93	0.00	359.52	7,545.00	500.73	151.54	1.50	-1.50	0.00	180.0000	
9,548.97	0.00	359.52	9,507.04	500.73	151.54	0.00	0.00	0.00	0.0000	
10,448.97	90.00	359.44	10,080.00	1,073.66	145.90	10.00	10.00	-0.01	359.4355	
20,265.58	90.00	359.44	10,080.00	10,889.80	49.19	0.00	0.00	0.00	0.0000	PBHL (Norte State)

Total Directional Planning Report - Geographic



Database:	EDM 5000.1 Single User Db	Local Co-ordinate Reference:	Well Norte State Com 601H
Company:	Franklin Mountain Energy	TVD Reference:	GE 3855' + KB 30' @ 3885.00usft
Project:	Lea County, NM (NAD83)	MD Reference:	GE 3855' + KB 30' @ 3885.00usft
Site:	Sec 3-T19S-R35E (Eagle/Norte State)	North Reference:	Grid
Well:	Norte State Com 601H	Survey Calculation Method:	Minimum Curvature
Wellbore:	OH		
Design:	Plan #1		

Planned Survey										
Measured Depth (usft)	Inclination (°)	Azimuth (°)	Vertical Depth (usft)	+N/-S (usft)	+E/-W (usft)	Map Northing (usft)	Map Easting (usft)	Latitude	Longitude	
0.00	0.00	0.00	0.00	0.00	0.00	617,893.72	812,579.86	32.6955334	-103.4516179	
30.00	0.00	0.00	30.00	0.00	0.00	617,893.72	812,579.86	32.6955334	-103.4516179	
Cenozoic Alluvium (surface)										
100.00	0.00	0.00	100.00	0.00	0.00	617,893.72	812,579.86	32.6955334	-103.4516179	
200.00	0.00	0.00	200.00	0.00	0.00	617,893.72	812,579.86	32.6955334	-103.4516179	
300.00	0.00	0.00	300.00	0.00	0.00	617,893.72	812,579.86	32.6955334	-103.4516179	
400.00	0.00	0.00	400.00	0.00	0.00	617,893.72	812,579.86	32.6955334	-103.4516179	
500.00	0.00	0.00	500.00	0.00	0.00	617,893.72	812,579.86	32.6955334	-103.4516179	
600.00	0.00	0.00	600.00	0.00	0.00	617,893.72	812,579.86	32.6955334	-103.4516179	
700.00	0.00	0.00	700.00	0.00	0.00	617,893.72	812,579.86	32.6955334	-103.4516179	
800.00	0.00	0.00	800.00	0.00	0.00	617,893.72	812,579.86	32.6955334	-103.4516179	
900.00	0.00	0.00	900.00	0.00	0.00	617,893.72	812,579.86	32.6955334	-103.4516179	
1,000.00	0.00	0.00	1,000.00	0.00	0.00	617,893.72	812,579.86	32.6955334	-103.4516179	
1,100.00	0.00	0.00	1,100.00	0.00	0.00	617,893.72	812,579.86	32.6955334	-103.4516179	
1,200.00	0.00	0.00	1,200.00	0.00	0.00	617,893.72	812,579.86	32.6955334	-103.4516179	
1,300.00	0.00	0.00	1,300.00	0.00	0.00	617,893.72	812,579.86	32.6955334	-103.4516179	
1,400.00	0.00	0.00	1,400.00	0.00	0.00	617,893.72	812,579.86	32.6955334	-103.4516179	
1,500.00	0.00	0.00	1,500.00	0.00	0.00	617,893.72	812,579.86	32.6955334	-103.4516179	
1,600.00	0.00	0.00	1,600.00	0.00	0.00	617,893.72	812,579.86	32.6955334	-103.4516179	
1,700.00	0.00	0.00	1,700.00	0.00	0.00	617,893.72	812,579.86	32.6955334	-103.4516179	
1,800.00	0.00	0.00	1,800.00	0.00	0.00	617,893.72	812,579.86	32.6955334	-103.4516179	
1,808.00	0.00	0.00	1,808.00	0.00	0.00	617,893.72	812,579.86	32.6955334	-103.4516179	
Rustler										
1,900.00	0.00	0.00	1,900.00	0.00	0.00	617,893.72	812,579.86	32.6955334	-103.4516179	
2,000.00	0.00	0.00	2,000.00	0.00	0.00	617,893.72	812,579.86	32.6955334	-103.4516179	
2,047.00	0.00	0.00	2,047.00	0.00	0.00	617,893.72	812,579.86	32.6955334	-103.4516179	
Salado										
2,100.00	0.00	0.00	2,100.00	0.00	0.00	617,893.72	812,579.86	32.6955334	-103.4516179	
2,200.00	0.00	0.00	2,200.00	0.00	0.00	617,893.72	812,579.86	32.6955334	-103.4516179	
2,300.00	0.00	0.00	2,300.00	0.00	0.00	617,893.72	812,579.86	32.6955334	-103.4516179	
2,400.00	0.00	0.00	2,400.00	0.00	0.00	617,893.72	812,579.86	32.6955334	-103.4516179	
2,500.00	0.00	0.00	2,500.00	0.00	0.00	617,893.72	812,579.86	32.6955334	-103.4516179	
2,600.00	1.50	74.52	2,599.99	0.35	1.26	617,894.07	812,581.12	32.6955343	-103.4516138	
2,700.00	3.00	74.52	2,699.91	1.40	5.04	617,895.12	812,584.90	32.6955371	-103.4516015	
2,800.00	4.50	74.52	2,799.69	3.14	11.35	617,896.87	812,591.21	32.6955417	-103.4515810	
2,833.33	5.00	74.52	2,832.91	3.88	14.01	617,897.60	812,593.87	32.6955437	-103.4515723	
2,900.00	5.00	74.52	2,899.32	5.43	19.61	617,899.15	812,599.47	32.6955478	-103.4515540	
2,960.91	5.00	74.52	2,960.00	6.85	24.72	617,900.57	812,604.58	32.6955516	-103.4515374	
Base Salt										
3,000.00	5.00	74.52	2,998.94	7.75	28.01	617,901.48	812,607.87	32.6955540	-103.4515267	
3,100.00	5.00	74.52	3,098.56	10.08	36.41	617,903.80	812,616.27	32.6955602	-103.4514993	
3,200.00	5.00	74.52	3,198.18	12.41	44.81	617,906.13	812,624.66	32.6955664	-103.4514720	
3,300.00	5.00	74.52	3,297.80	14.73	53.21	617,908.46	812,633.06	32.6955726	-103.4514446	
3,362.44	5.00	74.52	3,360.00	16.18	58.45	617,909.91	812,638.31	32.6955765	-103.4514275	
Yates										
3,400.00	5.00	74.52	3,397.42	17.06	61.61	617,910.78	812,641.46	32.6955788	-103.4514172	
3,500.00	5.00	74.52	3,497.04	19.38	70.01	617,913.11	812,649.86	32.6955850	-103.4513899	
3,600.00	5.00	74.52	3,596.66	21.71	78.40	617,915.43	812,658.26	32.6955912	-103.4513625	
3,700.00	5.00	74.52	3,696.28	24.03	86.80	617,917.76	812,666.66	32.6955974	-103.4513351	
3,800.00	5.00	74.52	3,795.90	26.36	95.20	617,920.08	812,675.06	32.6956036	-103.4513078	
3,813.15	5.00	74.52	3,809.00	26.67	96.31	617,920.39	812,676.17	32.6956044	-103.4513042	
Seven Rivers										
3,900.00	5.00	74.52	3,895.52	28.69	103.60	617,922.41	812,683.46	32.6956098	-103.4512804	
4,000.00	5.00	74.52	3,995.14	31.01	112.00	617,924.74	812,691.86	32.6956160	-103.4512530	

Total Directional

Planning Report - Geographic



Database:	EDM 5000.1 Single User Db	Local Co-ordinate Reference:	Well Norte State Com 601H
Company:	Franklin Mountain Energy	TVD Reference:	GE 3855' + KB 30' @ 3885.00usft
Project:	Lea County, NM (NAD83)	MD Reference:	GE 3855' + KB 30' @ 3885.00usft
Site:	Sec 3-T19S-R35E (Eagle/Norte State)	North Reference:	Grid
Well:	Norte State Com 601H	Survey Calculation Method:	Minimum Curvature
Wellbore:	OH		
Design:	Plan #1		

Planned Survey									
Measured Depth (usft)	Inclination (°)	Azimuth (°)	Vertical Depth (usft)	+N/-S (usft)	+E/-W (usft)	Map Northing (usft)	Map Easting (usft)	Latitude	Longitude
4,100.00	5.00	74.52	4,094.76	33.34	120.40	617,927.06	812,700.26	32.6956222	-103.4512257
4,180.00	5.00	74.52	4,174.45	35.20	127.12	617,928.92	812,706.98	32.6956272	-103.4512038
4,200.00	4.93	71.15	4,194.38	35.71	128.78	617,929.43	812,708.63	32.6956286	-103.4511984
4,300.00	4.85	53.52	4,294.02	39.61	136.24	617,933.34	812,716.10	32.6956391	-103.4511740
4,400.00	5.22	36.90	4,393.64	45.77	142.38	617,939.49	812,722.24	32.6956559	-103.4511539
4,500.00	5.96	23.42	4,493.17	54.17	147.18	617,947.90	812,727.04	32.6956789	-103.4511381
4,576.30	6.69	15.44	4,569.00	62.10	149.94	617,955.82	812,729.79	32.6957006	-103.4511289
Queen									
4,600.00	6.95	13.32	4,592.53	64.82	150.63	617,958.55	812,730.49	32.6957081	-103.4511266
4,700.00	8.09	5.88	4,691.68	77.70	152.75	617,971.43	812,732.61	32.6957434	-103.4511193
4,800.00	9.33	0.34	4,790.52	92.81	153.52	617,986.54	812,733.37	32.6957849	-103.4511164
4,813.09	9.50	359.72	4,803.43	94.96	153.52	617,988.68	812,733.37	32.6957908	-103.4511164
4,900.00	9.50	359.72	4,889.15	109.31	153.45	618,003.03	812,733.31	32.6958303	-103.4511162
5,000.00	9.50	359.72	4,987.78	125.81	153.37	618,019.54	812,733.23	32.6958756	-103.4511160
5,100.00	9.50	359.72	5,086.41	142.32	153.29	618,036.05	812,733.14	32.6959210	-103.4511158
5,200.00	9.50	359.72	5,185.04	158.83	153.21	618,052.56	812,733.06	32.6959664	-103.4511157
5,300.00	9.50	359.72	5,283.66	175.34	153.13	618,069.07	812,732.98	32.6960118	-103.4511155
5,400.00	9.50	359.72	5,382.29	191.85	153.05	618,085.58	812,732.90	32.6960571	-103.4511153
5,500.00	9.50	359.72	5,480.92	208.36	152.97	618,102.09	812,732.82	32.6961025	-103.4511151
5,600.00	9.50	359.72	5,579.55	224.87	152.89	618,118.60	812,732.74	32.6961479	-103.4511149
5,700.00	9.50	359.72	5,678.17	241.38	152.81	618,135.11	812,732.66	32.6961933	-103.4511147
5,800.00	9.50	359.72	5,776.80	257.89	152.72	618,151.62	812,732.58	32.6962387	-103.4511145
5,900.00	9.50	359.72	5,875.43	274.40	152.64	618,168.12	812,732.50	32.6962840	-103.4511144
6,000.00	9.50	359.72	5,974.06	290.91	152.56	618,184.63	812,732.42	32.6963294	-103.4511142
6,080.04	9.50	359.72	6,053.00	304.13	152.50	618,197.85	812,732.36	32.6963657	-103.4511140
Cherry Canyon									
6,100.00	9.50	359.72	6,072.68	307.42	152.48	618,201.14	812,732.34	32.6963748	-103.4511140
6,200.00	9.50	359.72	6,171.31	323.93	152.40	618,217.65	812,732.26	32.6964202	-103.4511138
6,300.00	9.50	359.72	6,269.94	340.44	152.32	618,234.16	812,732.18	32.6964655	-103.4511136
6,400.00	9.50	359.72	6,368.57	356.95	152.24	618,250.67	812,732.10	32.6965109	-103.4511134
6,500.00	9.50	359.72	6,467.20	373.46	152.16	618,267.18	812,732.02	32.6965563	-103.4511132
6,600.00	9.50	359.72	6,565.82	389.97	152.08	618,283.69	812,731.94	32.6966017	-103.4511131
6,700.00	9.50	359.72	6,664.45	406.48	152.00	618,300.20	812,731.86	32.6966470	-103.4511129
6,800.00	9.50	359.72	6,763.08	422.99	151.92	618,316.71	812,731.78	32.6966924	-103.4511127
6,900.00	9.50	359.72	6,861.71	439.50	151.84	618,333.22	812,731.70	32.6967378	-103.4511125
6,953.40	9.50	359.72	6,914.37	448.31	151.80	618,342.04	812,731.66	32.6967620	-103.4511124
7,000.00	8.80	359.72	6,960.38	455.73	151.76	618,349.45	812,731.62	32.6967824	-103.4511123
7,100.00	7.30	359.72	7,059.39	469.74	151.70	618,363.46	812,731.55	32.6968209	-103.4511122
7,200.00	5.80	359.72	7,158.73	481.15	151.64	618,374.87	812,731.50	32.6968523	-103.4511120
7,300.00	4.30	359.72	7,258.34	489.96	151.60	618,383.68	812,731.46	32.6968765	-103.4511119
7,400.00	2.80	359.72	7,358.15	496.16	151.57	618,389.88	812,731.43	32.6968935	-103.4511119
7,500.00	1.30	359.72	7,458.08	499.74	151.55	618,393.46	812,731.41	32.6969034	-103.4511118
7,543.93	0.65	359.72	7,502.00	500.49	151.55	618,394.21	812,731.40	32.6969054	-103.4511118
Bone Spring Lime									
7,586.93	0.00	359.52	7,545.00	500.73	151.54	618,394.45	812,731.40	32.6969061	-103.4511118
7,600.00	0.00	0.00	7,558.07	500.73	151.54	618,394.45	812,731.40	32.6969061	-103.4511118
7,700.00	0.00	0.00	7,658.07	500.73	151.54	618,394.45	812,731.40	32.6969061	-103.4511118
7,800.00	0.00	0.00	7,758.07	500.73	151.54	618,394.45	812,731.40	32.6969061	-103.4511118
7,900.00	0.00	0.00	7,858.07	500.73	151.54	618,394.45	812,731.40	32.6969061	-103.4511118
8,000.00	0.00	0.00	7,958.07	500.73	151.54	618,394.45	812,731.40	32.6969061	-103.4511118
8,100.00	0.00	0.00	8,058.07	500.73	151.54	618,394.45	812,731.40	32.6969061	-103.4511118
8,200.00	0.00	0.00	8,158.07	500.73	151.54	618,394.45	812,731.40	32.6969061	-103.4511118
8,300.00	0.00	0.00	8,258.07	500.73	151.54	618,394.45	812,731.40	32.6969061	-103.4511118
8,400.00	0.00	0.00	8,358.07	500.73	151.54	618,394.45	812,731.40	32.6969061	-103.4511118

Total Directional

Planning Report - Geographic



Database:	EDM 5000.1 Single User Db	Local Co-ordinate Reference:	Well Norte State Com 601H
Company:	Franklin Mountain Energy	TVD Reference:	GE 3855' + KB 30' @ 3885.00usft
Project:	Lea County, NM (NAD83)	MD Reference:	GE 3855' + KB 30' @ 3885.00usft
Site:	Sec 3-T19S-R35E (Eagle/Norte State)	North Reference:	Grid
Well:	Norte State Com 601H	Survey Calculation Method:	Minimum Curvature
Wellbore:	OH		
Design:	Plan #1		

Planned Survey									
Measured Depth (usft)	Inclination (°)	Azimuth (°)	Vertical Depth (usft)	+N/-S (usft)	+E/-W (usft)	Map Northing (usft)	Map Easting (usft)	Latitude	Longitude
8,500.00	0.00	0.00	8,458.07	500.73	151.54	618,394.45	812,731.40	32.6969061	-103.4511118
8,600.00	0.00	0.00	8,558.07	500.73	151.54	618,394.45	812,731.40	32.6969061	-103.4511118
8,700.00	0.00	0.00	8,658.07	500.73	151.54	618,394.45	812,731.40	32.6969061	-103.4511118
8,800.00	0.00	0.00	8,758.07	500.73	151.54	618,394.45	812,731.40	32.6969061	-103.4511118
8,900.00	0.00	0.00	8,858.07	500.73	151.54	618,394.45	812,731.40	32.6969061	-103.4511118
9,000.00	0.00	0.00	8,958.07	500.73	151.54	618,394.45	812,731.40	32.6969061	-103.4511118
9,100.00	0.00	0.00	9,058.07	500.73	151.54	618,394.45	812,731.40	32.6969061	-103.4511118
9,124.93	0.00	0.00	9,083.00	500.73	151.54	618,394.45	812,731.40	32.6969061	-103.4511118
First Bone Spring Sand									
9,200.00	0.00	0.00	9,158.07	500.73	151.54	618,394.45	812,731.40	32.6969061	-103.4511118
9,300.00	0.00	0.00	9,258.07	500.73	151.54	618,394.45	812,731.40	32.6969061	-103.4511118
9,391.93	0.00	0.00	9,350.00	500.73	151.54	618,394.45	812,731.40	32.6969061	-103.4511118
Second Bone Spring Carbonates									
9,400.00	0.00	0.00	9,358.07	500.73	151.54	618,394.45	812,731.40	32.6969061	-103.4511118
9,500.00	0.00	0.00	9,458.07	500.73	151.54	618,394.45	812,731.40	32.6969061	-103.4511118
9,548.97	0.00	359.52	9,507.04	500.73	151.54	618,394.45	812,731.40	32.6969061	-103.4511118
KOP (Norte State Com 601H)									
9,550.00	0.10	359.44	9,508.07	500.73	151.54	618,394.45	812,731.40	32.6969061	-103.4511118
9,582.95	3.40	359.44	9,541.00	501.74	151.53	618,395.46	812,731.39	32.6969089	-103.4511118
Second Bone Spring Sand									
9,600.00	5.10	359.44	9,558.01	503.00	151.52	618,396.72	812,731.38	32.6969123	-103.4511118
9,650.00	10.10	359.44	9,607.55	509.61	151.46	618,403.34	812,731.32	32.6969305	-103.4511119
9,700.00	15.10	359.44	9,656.33	520.52	151.35	618,414.24	812,731.21	32.6969605	-103.4511119
9,750.00	20.10	359.44	9,703.97	535.64	151.20	618,429.36	812,731.06	32.6970020	-103.4511120
9,800.00	25.10	359.44	9,750.12	554.85	151.01	618,448.57	812,730.87	32.6970548	-103.4511121
9,850.00	30.10	359.44	9,794.41	578.01	150.78	618,471.73	812,730.64	32.6971185	-103.4511122
9,900.00	35.10	359.44	9,836.52	604.94	150.52	618,498.66	812,730.38	32.6971925	-103.4511123
9,950.00	40.10	359.44	9,876.12	635.43	150.22	618,529.16	812,730.08	32.6972763	-103.4511125
10,000.00	45.10	359.44	9,912.91	669.27	149.88	618,562.99	812,729.74	32.6973693	-103.4511127
10,041.33	49.24	359.44	9,941.00	699.57	149.59	618,593.29	812,729.44	32.6974526	-103.4511128
Third Bone Springs Carbonates									
10,050.00	50.10	359.44	9,946.61	706.18	149.52	618,599.90	812,729.38	32.6974708	-103.4511128
10,081.29	53.23	359.44	9,966.02	730.72	149.28	618,624.44	812,729.14	32.6975382	-103.4511130
FTP (Norte State Com 601H)									
10,100.00	55.10	359.44	9,976.97	745.89	149.13	618,639.61	812,728.99	32.6975799	-103.4511130
10,150.00	60.10	359.44	10,003.75	788.09	148.71	618,681.81	812,728.57	32.6976959	-103.4511133
10,156.58	60.76	359.44	10,007.00	793.82	148.66	618,687.54	812,728.52	32.6977117	-103.4511133
Third Bone Springs Sand									
10,200.00	65.10	359.44	10,026.75	832.47	148.28	618,726.19	812,728.13	32.6978179	-103.4511135
10,250.00	70.10	359.44	10,045.80	878.68	147.82	618,772.40	812,727.68	32.6979449	-103.4511137
10,300.00	75.10	359.44	10,060.74	926.37	147.35	618,820.10	812,727.21	32.6980760	-103.4511139
10,350.00	80.10	359.44	10,071.47	975.19	146.87	618,868.91	812,726.73	32.6982102	-103.4511142
10,400.00	85.10	359.44	10,077.91	1,024.75	146.38	618,918.48	812,726.24	32.6983464	-103.4511144
10,448.97	90.00	359.44	10,080.00	1,073.66	145.90	618,967.38	812,725.76	32.6984808	-103.4511147
HZ Target at Landing									
10,500.00	90.00	359.44	10,080.00	1,124.69	145.40	619,018.41	812,725.26	32.6986211	-103.4511149
10,600.00	90.00	359.44	10,080.00	1,224.69	144.41	619,118.41	812,724.27	32.6988960	-103.4511154
10,700.00	90.00	359.44	10,080.00	1,324.68	143.43	619,218.40	812,723.29	32.6991708	-103.4511159
10,800.00	90.00	359.44	10,080.00	1,424.68	142.44	619,318.40	812,722.30	32.6994456	-103.4511164
10,900.00	90.00	359.44	10,080.00	1,524.67	141.46	619,418.39	812,721.31	32.6997205	-103.4511169
11,000.00	90.00	359.44	10,080.00	1,624.67	140.47	619,518.39	812,720.33	32.6999953	-103.4511174
11,100.00	90.00	359.44	10,080.00	1,724.66	139.49	619,618.38	812,719.34	32.7002702	-103.4511179
11,200.00	90.00	359.44	10,080.00	1,824.66	138.50	619,718.38	812,718.36	32.7005450	-103.4511184
11,300.00	90.00	359.44	10,080.00	1,924.65	137.52	619,818.38	812,717.37	32.7008199	-103.4511189

Total Directional Planning Report - Geographic



Database:	EDM 5000.1 Single User Db	Local Co-ordinate Reference:	Well Norte State Com 601H
Company:	Franklin Mountain Energy	TVD Reference:	GE 3855' + KB 30' @ 3885.00usft
Project:	Lea County, NM (NAD83)	MD Reference:	GE 3855' + KB 30' @ 3885.00usft
Site:	Sec 3-T19S-R35E (Eagle/Norte State)	North Reference:	Grid
Well:	Norte State Com 601H	Survey Calculation Method:	Minimum Curvature
Wellbore:	OH		
Design:	Plan #1		

Planned Survey										
Measured Depth (usft)	Inclination (°)	Azimuth (°)	Vertical Depth (usft)	+N/-S (usft)	+E/-W (usft)	Map Northing (usft)	Map Easting (usft)	Latitude	Longitude	
11,400.00	90.00	359.44	10,080.00	2,024.65	136.53	619,918.37	812,716.39	32.7010947	-103.4511194	
11,500.00	90.00	359.44	10,080.00	2,124.64	135.55	620,018.37	812,715.40	32.7013696	-103.4511199	
11,600.00	90.00	359.44	10,080.00	2,224.64	134.56	620,118.36	812,714.42	32.7016444	-103.4511204	
11,700.00	90.00	359.44	10,080.00	2,324.63	133.58	620,218.36	812,713.43	32.7019193	-103.4511209	
11,800.00	90.00	359.44	10,080.00	2,424.63	132.59	620,318.35	812,712.45	32.7021941	-103.4511214	
11,900.00	90.00	359.44	10,080.00	2,524.62	131.61	620,418.35	812,711.46	32.7024690	-103.4511219	
12,000.00	90.00	359.44	10,080.00	2,624.62	130.62	620,518.34	812,710.48	32.7027438	-103.4511224	
12,100.00	90.00	359.44	10,080.00	2,724.61	129.63	620,618.34	812,709.49	32.7030186	-103.4511229	
12,200.00	90.00	359.44	10,080.00	2,824.61	128.65	620,718.33	812,708.51	32.7032935	-103.4511234	
12,300.00	90.00	359.44	10,080.00	2,924.60	127.66	620,818.33	812,707.52	32.7035683	-103.4511239	
12,400.00	90.00	359.44	10,080.00	3,024.60	126.68	620,918.32	812,706.54	32.7038432	-103.4511244	
12,500.00	90.00	359.44	10,080.00	3,124.59	125.69	621,018.32	812,705.55	32.7041180	-103.4511249	
12,600.00	90.00	359.44	10,080.00	3,224.59	124.71	621,118.31	812,704.57	32.7043929	-103.4511254	
12,700.00	90.00	359.44	10,080.00	3,324.58	123.72	621,218.31	812,703.58	32.7046677	-103.4511259	
12,800.00	90.00	359.44	10,080.00	3,424.58	122.74	621,318.30	812,702.60	32.7049426	-103.4511264	
12,900.00	90.00	359.44	10,080.00	3,524.57	121.75	621,418.30	812,701.61	32.7052174	-103.4511269	
13,000.00	90.00	359.44	10,080.00	3,624.57	120.77	621,518.29	812,700.63	32.7054923	-103.4511274	
13,100.00	90.00	359.44	10,080.00	3,724.56	119.78	621,618.29	812,699.64	32.7057671	-103.4511279	
13,200.00	90.00	359.44	10,080.00	3,824.56	118.80	621,718.28	812,698.66	32.7060420	-103.4511284	
13,300.00	90.00	359.44	10,080.00	3,924.55	117.81	621,818.28	812,697.67	32.7063168	-103.4511289	
13,400.00	90.00	359.44	10,080.00	4,024.55	116.83	621,918.27	812,696.69	32.7065916	-103.4511294	
13,500.00	90.00	359.44	10,080.00	4,124.54	115.84	622,018.27	812,695.70	32.7068665	-103.4511299	
13,600.00	90.00	359.44	10,080.00	4,224.54	114.86	622,118.26	812,694.72	32.7071413	-103.4511304	
13,700.00	90.00	359.44	10,080.00	4,324.54	113.87	622,218.26	812,693.73	32.7074162	-103.4511309	
13,800.00	90.00	359.44	10,080.00	4,424.53	112.89	622,318.25	812,692.75	32.7076910	-103.4511314	
13,900.00	90.00	359.44	10,080.00	4,524.53	111.90	622,418.25	812,691.76	32.7079659	-103.4511319	
14,000.00	90.00	359.44	10,080.00	4,624.52	110.92	622,518.24	812,690.77	32.7082407	-103.4511324	
14,100.00	90.00	359.44	10,080.00	4,724.52	109.93	622,618.24	812,689.79	32.7085156	-103.4511329	
14,200.00	90.00	359.44	10,080.00	4,824.51	108.95	622,718.23	812,688.80	32.7087904	-103.4511334	
14,300.00	90.00	359.44	10,080.00	4,924.51	107.96	622,818.23	812,687.82	32.7090653	-103.4511339	
14,400.00	90.00	359.44	10,080.00	5,024.50	106.98	622,918.22	812,686.83	32.7093401	-103.4511344	
14,500.00	90.00	359.44	10,080.00	5,124.50	105.99	623,018.22	812,685.85	32.7096150	-103.4511349	
14,600.00	90.00	359.44	10,080.00	5,224.49	105.01	623,118.22	812,684.86	32.7098898	-103.4511353	
14,700.00	90.00	359.44	10,080.00	5,324.49	104.02	623,218.21	812,683.88	32.7101646	-103.4511358	
14,800.00	90.00	359.44	10,080.00	5,424.48	103.04	623,318.21	812,682.89	32.7104395	-103.4511363	
14,900.00	90.00	359.44	10,080.00	5,524.48	102.05	623,418.20	812,681.91	32.7107143	-103.4511368	
15,000.00	90.00	359.44	10,080.00	5,624.47	101.06	623,518.20	812,680.92	32.7109892	-103.4511373	
15,100.00	90.00	359.44	10,080.00	5,724.47	100.08	623,618.19	812,679.94	32.7112640	-103.4511378	
15,200.00	90.00	359.44	10,080.00	5,824.46	99.09	623,718.19	812,678.95	32.7115389	-103.4511383	
15,300.00	90.00	359.44	10,080.00	5,924.46	98.11	623,818.18	812,677.97	32.7118137	-103.4511388	
15,400.00	90.00	359.44	10,080.00	6,024.45	97.12	623,918.18	812,676.98	32.7120886	-103.4511393	
15,500.00	90.00	359.44	10,080.00	6,124.45	96.14	624,018.17	812,676.00	32.7123634	-103.4511398	
15,600.00	90.00	359.44	10,080.00	6,224.44	95.15	624,118.17	812,675.01	32.7126383	-103.4511403	
15,700.00	90.00	359.44	10,080.00	6,324.44	94.17	624,218.16	812,674.03	32.7129131	-103.4511408	
15,800.00	90.00	359.44	10,080.00	6,424.43	93.18	624,318.16	812,673.04	32.7131880	-103.4511413	
15,900.00	90.00	359.44	10,080.00	6,524.43	92.20	624,418.15	812,672.06	32.7134628	-103.4511418	
16,000.00	90.00	359.44	10,080.00	6,624.42	91.21	624,518.15	812,671.07	32.7137376	-103.4511423	
16,100.00	90.00	359.44	10,080.00	6,724.42	90.23	624,618.14	812,670.09	32.7140125	-103.4511428	
16,200.00	90.00	359.44	10,080.00	6,824.41	89.24	624,718.14	812,669.10	32.7142873	-103.4511433	
16,300.00	90.00	359.44	10,080.00	6,924.41	88.26	624,818.13	812,668.12	32.7145622	-103.4511438	
16,400.00	90.00	359.44	10,080.00	7,024.40	87.27	624,918.13	812,667.13	32.7148370	-103.4511443	
16,500.00	90.00	359.44	10,080.00	7,124.40	86.29	625,018.12	812,666.15	32.7151119	-103.4511448	
16,600.00	90.00	359.44	10,080.00	7,224.39	85.30	625,118.12	812,665.16	32.7153867	-103.4511453	
16,700.00	90.00	359.44	10,080.00	7,324.39	84.32	625,218.11	812,664.18	32.7156616	-103.4511458	
16,800.00	90.00	359.44	10,080.00	7,424.38	83.33	625,318.11	812,663.19	32.7159364	-103.4511463	

Total Directional

Planning Report - Geographic



Database:	EDM 5000.1 Single User Db	Local Co-ordinate Reference:	Well Norte State Com 601H
Company:	Franklin Mountain Energy	TVD Reference:	GE 3855' + KB 30' @ 3885.00usft
Project:	Lea County, NM (NAD83)	MD Reference:	GE 3855' + KB 30' @ 3885.00usft
Site:	Sec 3-T19S-R35E (Eagle/Norte State)	North Reference:	Grid
Well:	Norte State Com 601H	Survey Calculation Method:	Minimum Curvature
Wellbore:	OH		
Design:	Plan #1		

Planned Survey										
Measured Depth (usft)	Inclination (°)	Azimuth (°)	Vertical Depth (usft)	+N/-S (usft)	+E/-W (usft)	Map Northing (usft)	Map Easting (usft)	Latitude	Longitude	
16,900.00	90.00	359.44	10,080.00	7,524.38	82.35	625,418.10	812,662.20	32.7162113	-103.4511468	
17,000.00	90.00	359.44	10,080.00	7,624.38	81.36	625,518.10	812,661.22	32.7164861	-103.4511473	
17,100.00	90.00	359.44	10,080.00	7,724.37	80.38	625,618.09	812,660.23	32.7167609	-103.4511478	
17,200.00	90.00	359.44	10,080.00	7,824.37	79.39	625,718.09	812,659.25	32.7170358	-103.4511483	
17,300.00	90.00	359.44	10,080.00	7,924.36	78.41	625,818.08	812,658.26	32.7173106	-103.4511488	
17,400.00	90.00	359.44	10,080.00	8,024.36	77.42	625,918.08	812,657.28	32.7175855	-103.4511493	
17,500.00	90.00	359.44	10,080.00	8,124.35	76.44	626,018.07	812,656.29	32.7178603	-103.4511498	
17,600.00	90.00	359.44	10,080.00	8,224.35	75.45	626,118.07	812,655.31	32.7181352	-103.4511503	
17,700.00	90.00	359.44	10,080.00	8,324.34	74.47	626,218.06	812,654.32	32.7184100	-103.4511508	
17,800.00	90.00	359.44	10,080.00	8,424.34	73.48	626,318.06	812,653.34	32.7186849	-103.4511513	
17,900.00	90.00	359.44	10,080.00	8,524.33	72.49	626,418.06	812,652.35	32.7189597	-103.4511518	
18,000.00	90.00	359.44	10,080.00	8,624.33	71.51	626,518.05	812,651.37	32.7192346	-103.4511523	
18,100.00	90.00	359.44	10,080.00	8,724.32	70.52	626,618.05	812,650.38	32.7195094	-103.4511528	
18,200.00	90.00	359.44	10,080.00	8,824.32	69.54	626,718.04	812,649.40	32.7197842	-103.4511533	
18,300.00	90.00	359.44	10,080.00	8,924.31	68.55	626,818.04	812,648.41	32.7200591	-103.4511538	
18,400.00	90.00	359.44	10,080.00	9,024.31	67.57	626,918.03	812,647.43	32.7203339	-103.4511542	
18,500.00	90.00	359.44	10,080.00	9,124.30	66.58	627,018.03	812,646.44	32.7206088	-103.4511547	
18,600.00	90.00	359.44	10,080.00	9,224.30	65.60	627,118.02	812,645.46	32.7208836	-103.4511552	
18,700.00	90.00	359.44	10,080.00	9,324.29	64.61	627,218.02	812,644.47	32.7211585	-103.4511557	
18,800.00	90.00	359.44	10,080.00	9,424.29	63.63	627,318.01	812,643.49	32.7214333	-103.4511562	
18,900.00	90.00	359.44	10,080.00	9,524.28	62.64	627,418.01	812,642.50	32.7217082	-103.4511567	
19,000.00	90.00	359.44	10,080.00	9,624.28	61.66	627,518.00	812,641.52	32.7219830	-103.4511572	
19,100.00	90.00	359.44	10,080.00	9,724.27	60.67	627,618.00	812,640.53	32.7222579	-103.4511577	
19,200.00	90.00	359.44	10,080.00	9,824.27	59.69	627,717.99	812,639.55	32.7225327	-103.4511582	
19,300.00	90.00	359.44	10,080.00	9,924.26	58.70	627,817.99	812,638.56	32.7228075	-103.4511587	
19,400.00	90.00	359.44	10,080.00	10,024.26	57.72	627,917.98	812,637.58	32.7230824	-103.4511592	
19,500.00	90.00	359.44	10,080.00	10,124.25	56.73	628,017.98	812,636.59	32.7233572	-103.4511597	
19,600.00	90.00	359.44	10,080.00	10,224.25	55.75	628,117.97	812,635.61	32.7236321	-103.4511602	
19,700.00	90.00	359.44	10,080.00	10,324.24	54.76	628,217.97	812,634.62	32.7239069	-103.4511607	
19,800.00	90.00	359.44	10,080.00	10,424.24	53.78	628,317.96	812,633.63	32.7241818	-103.4511612	
19,900.00	90.00	359.44	10,080.00	10,524.23	52.79	628,417.96	812,632.65	32.7244566	-103.4511617	
20,000.00	90.00	359.44	10,080.00	10,624.23	51.81	628,517.95	812,631.66	32.7247315	-103.4511622	
20,085.56	90.00	359.44	10,080.00	10,709.79	50.96	628,603.51	812,630.82	32.7249666	-103.4511626	
LTP (Norte State Com 601H)										
20,100.00	90.00	359.44	10,080.00	10,724.22	50.82	628,617.95	812,630.68	32.7250063	-103.4511627	
20,200.00	90.00	359.44	10,080.00	10,824.22	49.84	628,717.94	812,629.69	32.7252812	-103.4511632	
20,265.58	90.00	359.44	10,080.00	10,889.80	49.19	628,783.52	812,629.05	32.7254614	-103.4511635	
PBHL (Norte State Com 601H)										

Total Directional

Planning Report - Geographic



Database:	EDM 5000.1 Single User Db	Local Co-ordinate Reference:	Well Norte State Com 601H
Company:	Franklin Mountain Energy	TVD Reference:	GE 3855' + KB 30' @ 3885.00usft
Project:	Lea County, NM (NAD83)	MD Reference:	GE 3855' + KB 30' @ 3885.00usft
Site:	Sec 3-T19S-R35E (Eagle/Norte State)	North Reference:	Grid
Well:	Norte State Com 601H	Survey Calculation Method:	Minimum Curvature
Wellbore:	OH		
Design:	Plan #1		

Design Targets									
Target Name - hit/miss target - Shape	Dip Angle (°)	Dip Dir. (°)	TVD (usft)	+N/-S (usft)	+E/-W (usft)	Northing (usft)	Easting (usft)	Latitude	Longitude
KOP (Norte State Cor - plan hits target center - Point	0.00	359.52	9,507.04	500.73	151.54	618,394.45	812,731.40	32.6969061	-103.4511118
FTP (Norte State Cor - plan hits target center - Point	0.00	0.00	9,966.02	730.72	149.28	618,624.44	812,729.14	32.6975382	-103.4511130
PBHL (Norte State Cc - plan hits target center - Point	0.00	359.52	10,080.00	10,889.80	49.19	628,783.52	812,629.05	32.7254614	-103.4511635
LTP (Norte State Com - plan hits target center - Point	0.00	0.00	10,080.00	10,709.79	50.96	628,603.51	812,630.82	32.7249666	-103.4511626

Formations					
Measured Depth (usft)	Vertical Depth (usft)	Name	Lithology	Dip (°)	Dip Direction (°)
30.00	30.00	Cenozoic Alluvium (surface)		0.0000	359.43
1,808.00	1,808.00	Rustler		0.0000	359.43
2,047.00	2,047.00	Salado		0.0000	359.43
2,960.91	2,960.00	Base Salt		0.0000	359.43
3,362.44	3,360.00	Yates		0.0000	359.43
3,813.15	3,809.00	Seven Rivers		0.0000	359.43
4,576.30	4,569.00	Queen		0.0000	359.43
6,080.04	6,053.00	Cherry Canyon		0.0000	359.43
7,543.93	7,502.00	Bone Spring Lime		0.0000	359.43
9,124.93	9,083.00	First Bone Spring Sand		0.0000	359.43
9,391.93	9,350.00	Second Bone Spring Carbonates		0.0000	359.43
9,582.95	9,541.00	Second Bone Spring Sand		0.0000	359.43
10,041.33	9,941.00	Third Bone Springs Carbonates		0.0000	359.43
10,156.58	10,007.00	Third Bone Springs Sand		0.0000	359.43
10,448.97	10,080.00	HZ Target at Landing		0.0000	359.43

State of New Mexico
Energy, Minerals and Natural Resources Department
Oil Conservation Division
1220 South St. Francis Dr.
Santa Fe, NM 87505

Submit Electronically
Via E-permitting

NATURAL GAS MANAGEMENT PLAN

This Natural Gas Management Plan must be submitted with each Application for Permit to Drill (APD) for a new or recompleted well.

Section 1 – Plan Description

Effective May 25, 2021

I. Operator: Franklin Mountain Energy 3, LLC **OGRID:** 331595 **Date:** 2/28/2023

II. Type: ☒ Original ☐ Amendment due to ☐ 19.15.27.9.D(6)(a) NMAC ☐ 19.15.27.9.D(6)(b) NMAC ☐ Other.

If Other, please describe: _____

III. Well(s): Provide the following information for each new or recompleted well or set of wells proposed to be drilled or proposed to be recompleted from a single well pad or connected to a central delivery point.

Well Name	API	ULSTR	Footages	Anticipated Oil BBL/D	Anticipated Gas MCF/D	Anticipated Produced Water BBL/D
See Attached Well List						

IV. Central Delivery Point Name: Eagle/Norte CTB [See 19.15.27.9(D)(1) NMAC]

V. Anticipated Schedule: Provide the following information for each new or recompleted well or set of wells proposed to be drilled or proposed to be recompleted from a single well pad or connected to a central delivery point.

Well Name	API	Spud Date	TD Reached Date	Completion Commencement Date	Initial Flow Back Date	First Production Date
See Attached Well List						

VI. Separation Equipment: ☒ Attach a complete description of how Operator will size separation equipment to optimize gas capture.

VII. Operational Practices: ☒ Attach a complete description of the actions Operator will take to comply with the requirements of Subsection A through F of 19.15.27.8 NMAC.

VIII. Best Management Practices: ☒ Attach a complete description of Operator's best management practices to minimize venting during active and planned maintenance.

Section 2 – Enhanced Plan

EFFECTIVE APRIL 1, 2022

Beginning April 1, 2022, an operator that is not in compliance with its statewide natural gas capture requirement for the applicable reporting area must complete this section.

☒ Operator certifies that it is not required to complete this section because Operator is in compliance with its statewide natural gas capture requirement for the applicable reporting area.

IX. Anticipated Natural Gas Production:

Well	API	Anticipated Average Natural Gas Rate MCF/D	Anticipated Volume of Natural Gas for the First Year MCF

X. Natural Gas Gathering System (NGGS):

Operator	System	ULSTR of Tie-in	Anticipated Gathering Start Date	Available Maximum Daily Capacity of System Segment Tie-in

XI. Map. ☒ Attach an accurate and legible map depicting the location of the well(s), the anticipated pipeline route(s) connecting the production operations to the existing or planned interconnect of the natural gas gathering system(s), and the maximum daily capacity of the segment or portion of the natural gas gathering system(s) to which the well(s) will be connected.

XII. Line Capacity. The natural gas gathering system ☐ will ☐ will not have capacity to gather 100% of the anticipated natural gas production volume from the well prior to the date of first production.

XIII. Line Pressure. Operator ☐ does ☐ does not anticipate that its existing well(s) connected to the same segment, or portion, of the natural gas gathering system(s) described above will continue to meet anticipated increases in line pressure caused by the new well(s).

☐ Attach Operator's plan to manage production in response to the increased line pressure.

XIV. Confidentiality: ☐ Operator asserts confidentiality pursuant to Section 71-2-8 NMSA 1978 for the information provided in Section 2 as provided in Paragraph (2) of Subsection D of 19.15.27.9 NMAC, and attaches a full description of the specific information for which confidentiality is asserted and the basis for such assertion.

Section 3 - Certifications

Effective May 25, 2021

Operator certifies that, after reasonable inquiry and based on the available information at the time of submittal:

☒ Operator will be able to connect the well(s) to a natural gas gathering system in the general area with sufficient capacity to transport one hundred percent of the anticipated volume of natural gas produced from the well(s) commencing on the date of first production, taking into account the current and anticipated volumes of produced natural gas from other wells connected to the pipeline gathering system; or

☐ Operator will not be able to connect to a natural gas gathering system in the general area with sufficient capacity to transport one hundred percent of the anticipated volume of natural gas produced from the well(s) commencing on the date of first production, taking into account the current and anticipated volumes of produced natural gas from other wells connected to the pipeline gathering system.

If Operator checks this box, Operator will select one of the following:

Well Shut-In. ☐ Operator will shut-in and not produce the well until it submits the certification required by Paragraph (4) of Subsection D of 19.15.27.9 NMAC; or

Venting and Flaring Plan. ☐ Operator has attached a venting and flaring plan that evaluates and selects one or more of the potential alternative beneficial uses for the natural gas until a natural gas gathering system is available, including:

- (a) power generation on lease;
- (b) power generation for grid;
- (c) compression on lease;
- (d) liquids removal on lease;
- (e) reinjection for underground storage;
- (f) reinjection for temporary storage;
- (g) reinjection for enhanced oil recovery;
- (h) fuel cell production; and
- (i) other alternative beneficial uses approved by the division.

Section 4 - Notices

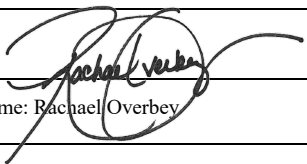
1. If, at any time after Operator submits this Natural Gas Management Plan and before the well is spud:

(a) Operator becomes aware that the natural gas gathering system it planned to connect the well(s) to has become unavailable or will not have capacity to transport one hundred percent of the production from the well(s), no later than 20 days after becoming aware of such information, Operator shall submit for OCD's approval a new or revised venting and flaring plan containing the information specified in Paragraph (5) of Subsection D of 19.15.27.9 NMAC; or

(b) Operator becomes aware that it has, cumulatively for the year, become out of compliance with its baseline natural gas capture rate or natural gas capture requirement, no later than 20 days after becoming aware of such information, Operator shall submit for OCD's approval a new or revised Natural Gas Management Plan for each well it plans to spud during the next 90 days containing the information specified in Paragraph (2) of Subsection D of 19.15.27.9 NMAC, and shall file an update for each Natural Gas Management Plan until Operator is back in compliance with its baseline natural gas capture rate or natural gas capture requirement.

2. OCD may deny or conditionally approve an APD if Operator does not make a certification, fails to submit an adequate venting and flaring plan which includes alternative beneficial uses for the anticipated volume of natural gas produced, or if OCD determines that Operator will not have adequate natural gas takeaway capacity at the time a well will be spud.

I certify that, after reasonable inquiry, the statements in and attached to this Natural Gas Management Plan are true and correct to the best of my knowledge and acknowledge that a false statement may be subject to civil and criminal penalties under the Oil and Gas Act.

Signature: 
Printed Name: Rachael Overbey
Title: Director Operations Planning & Regulatory
E-mail Address: roverbey@fmelle.com
Date: 2/28/2023
Phone: 720-414-7868
OIL CONSERVATION DIVISION (Only applicable when submitted as a standalone form)
Approved By:
Title:
Approval Date:
Conditions of Approval:

NATURAL GAS MANAGEMENT PLAN

III. Well(s): Provide the following information for each new or recompleted well or set of wells proposed to be drilled or proposed to be recompleted from a single well pad or connected to a central delivery point.

Well Name	API 14 Digit	ULSTR	Surface Location FTG	Anticipated Oil BBL/D	Anticipated Gas MCF/D	Anticipated Produced Water BBL/D
Eagle State Com 301H	TBD	Lot 4, 3-19S-35E	325 FNL 645 FWL	800 +/-	700 +/-	2500 +/-
Eagle State Com 302H	TBD	Lot 4, 3-19S-35E	400 FNL 745 FWL	800 +/-	700 +/-	2500 +/-
Eagle State Com 303H	TBD	Lot 3, 3-19S-35E	325 FNL 1920 FWL	800 +/-	700 +/-	2500 +/-
Eagle State Com 501H	TBD	Lot 4, 3-19S-35E	325 FNL 670 FWL	800 +/-	700 +/-	2500 +/-
Eagle State Com 502H	TBD	Lot 3, 3-19S-35E	400 FNL 1945 FWL	800 +/-	700 +/-	2500 +/-
Eagle State Com 601H	TBD	Lot 4, 3-19S-35E	400 FNL 720 FWL	800 +/-	700 +/-	2500 +/-
Eagle State Com 602H	TBD	Lot 3, 3-19S-35E	400 FNL 1895 FWL	800 +/-	700 +/-	2500 +/-
Eagle State Com 701H	TBD	Lot 4, 3-19S-35E	325 FNL 695 FWL	800 +/-	700 +/-	2500 +/-
Eagle State Com 702H	TBD	Lot 3, 3-19S-35E	400 FNL 1920 FWL	800 +/-	700 +/-	2500 +/-
Eagle State Com 703H	TBD	Lot 3, 3-19S-35E	325 FNL 1945 FWL	800 +/-	700 +/-	2500 +/-
Norte State Com 601H	TBD	Lot 4, 3-19S-35E	400 FNL 670 FWL	800 +/-	700 +/-	2500 +/-
Norte State Com 602H	TBD	Lot 3, 3-19S-35E	400 FNL 1995 FWL	800 +/-	700 +/-	2500 +/-
Norte State Com 701H	TBD	Lot 4, 3-19S-35E	400 FNL 645 FWL	800 +/-	700 +/-	2500 +/-
Norte State Com 702H	TBD	Lot 3, 3-19S-35E	325 FNL 1995 FWL	800 +/-	700 +/-	2500 +/-

V. Anticipated Schedule: Provide the following information for each new or recompleted well or set of wells proposed to be drilled or proposed to be recompleted from a single well pad or connected to a central delivery point.

Well Name	API 14 Digit	Spud Date (Batch Drilling)	TD Reached Date	Completion Commencement Date	Initial Flowback Date	First Production Date
Eagle State Com 301H	TBD	5/1/2023	8/21/2023	9/5/2023	9/15/2023	9/17/2023
Eagle State Com 302H	TBD	5/1/2023	8/21/2023	9/5/2023	9/15/2023	9/17/2023
Eagle State Com 303H	TBD	6/1/2023	9/21/2023	10/6/2023	10/16/2023	10/18/2023
Eagle State Com 501H	TBD	5/1/2023	8/21/2023	9/5/2023	9/15/2023	9/17/2023
Eagle State Com 502H	TBD	6/1/2023	9/21/2023	10/6/2023	10/16/2023	10/18/2023
Eagle State Com 601H	TBD	5/1/2023	8/21/2023	9/5/2023	9/15/2023	9/17/2023
Eagle State Com 602H	TBD	6/1/2023	9/21/2023	10/6/2023	10/16/2023	10/18/2023
Eagle State Com 701H	TBD	5/1/2023	8/21/2023	9/5/2023	9/15/2023	9/17/2023
Eagle State Com 702H	TBD	6/1/2023	9/21/2023	10/6/2023	10/16/2023	10/18/2023
Eagle State Com 703H	TBD	6/1/2023	9/21/2023	10/6/2023	10/16/2023	10/18/2023
Norte State Com 601H	TBD	5/1/2023	8/21/2023	9/5/2023	9/15/2023	9/17/2023
Norte State Com 602H	TBD	6/1/2023	9/21/2023	10/6/2023	10/16/2023	10/18/2023
Norte State Com 701H	TBD	5/1/2023	8/21/2023	9/5/2023	9/15/2023	9/17/2023
Norte State Com 702H		6/1/2023	9/21/2023	10/6/2023	10/16/2023	10/18/2023



Natural Gas Management Plan

Items VI-VIII

VI. Separation Equipment: Attach a complete description of how Operator will size separation equipment to optimize gas capture.

- Data from surrounding wells is used to generate type curves which provides the basis for expected gas rates during initial production, peak production and then the natural decline.
- Separation equipment will be sized to provide adequate separation for peak production.
- Facility design includes multiple stages of separation to minimize gas waste. Wells flow through a 3-phase separator to remove gas. Gas from the 3 Phase separators are then sent through a gas scrubber before being route to treatment and/or sales.
- Industry standard sizing calculations are used for gas-liquid separation and liquid-liquid separation.

VII. Operational Practices: Attach a complete description of the actions Operator will take to comply with the requirements of Subsection A through F 19.15.27.8 NMAC.

- Drilling, completion and production setup is designed to minimize the waste of natural gas and to flare instead of vent.
- *Drilling Operations:*
 - Natural gas encountered will be flared instead of vented unless there is an equipment malfunction and/or to avoid risking safety or the environment.
 - Flares will be properly sized and placed at least 100' from the nearest surface hole on the pad.
- *Completions/Recompletions Operations:*
 - Flowback operations will not commence until connected to a properly sized gas gathering system.
 - During initial flowback wells are routed to the separation equipment as soon as technically feasible to minimize gas waste.
 - During separation flowback wells are routed to the separation equipment to minimize gas waste.
 - Gas sales is maximized. Gas will be flared instead of vented during an emergency or malfunction to avoid posing a risk to operations or personnel safety.
 - Flares are properly sized with a continuous pilot.
- *Production Operations:*
 - Gas sales will be maximized. Gas will be flared instead of vented during an emergency or malfunction to avoid posing a risk to operations or personnel safety.
 - After a well is stabilized from liquid unloading, the well will be turned back into the collection system.
- *Performance Standards:*
 - The facility will be designed to handle peak production rates and pressures.
 - All tanks will have automatic gauging equipment.
 - Flares will be designed to ensure proper combustion and will have continuous pilots. Flares will be located 100' from nearest surface hole on the pad and storage tanks.
 - Weekly AVOs will be performed, and any leaking thief hatches will be cleaned and properly re-sealed.
- *Measurement and Calibration:*



- All volume that is flared and vented that is not measured will be estimated.
- When metering is not practical due to low pressure/rate, all vented or flared volumes will be estimated.
- Measurement will conform to industry standards. Measurement will not be bypassed except for purposes of inspection or calibration.

VIII. Best Management Practices: Attach a complete description of Operator's best management practices to minimize venting during active and planned maintenance.

- Venting will be minimized during active and planned maintenance.
- Systems and equipment requiring maintenance will be isolated and blown down to sales and then flare before any remaining gas is vented in an effort to minimize waste and venting.
- Downhole maintenance will use best management practices to minimize vent.

Eagle/Norte NGMP Map
Feb 2023
- Capacities reflected are FME's understanding of 3rd party midstream system capacities

