

District I

1625 N. French Dr., Hobbs, NM 88240
Phone:(575) 393-6161 Fax:(575) 393-0720

District II

811 S. First St., Artesia, NM 88210
Phone:(575) 748-1283 Fax:(575) 748-9720

District III

1000 Rio Brazos Rd., Aztec, NM 87410
Phone:(505) 334-6178 Fax:(505) 334-6170

District IV

1220 S. St Francis Dr., Santa Fe, NM 87505
Phone:(505) 476-3470 Fax:(505) 476-3462

State of New Mexico
Energy, Minerals and Natural Resources
Oil Conservation Division
1220 S. St Francis Dr.
Santa Fe, NM 87505

Form C-101
August 1, 2011

Permit 335554

APPLICATION FOR PERMIT TO DRILL, RE-ENTER, DEEPEN, PLUGBACK, OR ADD A ZONE

| | | |
|---|-------------------------------------|-------------------------------|
| 1. Operator Name and Address Franklin Mountain Energy 3, LLC 44 Cook Street Denver, CO 80206 | | 2. OGRID Number 331595 |
| | | 3. API Number 30-025-51163 |
| 4. Property Code 333825 | 5. Property Name NORTE STATE COM | 6. Well No. 602H |

7. Surface Location

| | | | | | | | | | |
|---------------|--------------|-----------------|--------------|--------------|------------------|---------------|-------------------|---------------|---------------|
| UL - Lot C | Section 3 | Township 19S | Range 35E | Lot Idn 3 | Feet From 400 | N/S Line N | Feet From 1995 | E/W Line W | County Lea |
|---------------|--------------|-----------------|--------------|--------------|------------------|---------------|-------------------|---------------|---------------|

8. Proposed Bottom Hole Location

| | | | | | | | | | |
|---------------|---------------|-----------------|--------------|--------------|------------------|---------------|-------------------|---------------|---------------|
| UL - Lot C | Section 27 | Township 18S | Range 35E | Lot Idn C | Feet From 150 | N/S Line N | Feet From 2300 | E/W Line W | County Lea |
|---------------|---------------|-----------------|--------------|--------------|------------------|---------------|-------------------|---------------|---------------|

9. Pool Information

| | |
|---------------------------|-------|
| VACUUM;BONE SPRING, SOUTH | 61900 |
| SCHARB;BONE SPRING | 55610 |

Additional Well Information

| | | | | |
|---------------------------|-----------------------------|--|-------------------------|------------------------------------|
| 11. Work Type New Well | 12. Well Type OIL | 13. Cable/Rotary | 14. Lease Type State | 15. Ground Level Elevation 3848 |
| 16. Multiple Y | 17. Proposed Depth 20234 | 18. Formation 3rd Bone Spring Sand | 19. Contractor | 20. Spud Date 5/1/2023 |
| Depth to Ground water | | Distance from nearest fresh water well | | Distance to nearest surface water |

☒ We will be using a closed-loop system in lieu of lined pits

21. Proposed Casing and Cement Program

| Type | Hole Size | Casing Size | Casing Weight/ft | Setting Depth | Sacks of Cement | Estimated TOC |
|------|-----------|-------------|------------------|---------------|-----------------|---------------|
| Surf | 17.5 | 13.375 | 54.5 | 1900 | 1457 | 0 |
| Int1 | 12.25 | 9.625 | 40 | 4000 | 841 | 0 |
| Prod | 8.75 | 7 | 32 | 9500 | 454 | 3000 |
| Prod | 8.75 | 5.5 | 20 | 20234 | 1021 | 9500 |

Casing/Cement Program: Additional Comments

Cementing Stage tool can be placed in the 1st Intermediate string as a contingency to ensure required TOC to surface. To increase efficiency of drilling operations and minimize disturbance of the area the batch-drilling approach will be used. Off-line cementing may be utilized for Surface and Intermediate strings to further optimization of drilling process and reduction of disturbance.

22. Proposed Blowout Prevention Program

| Type | Working Pressure | Test Pressure | Manufacturer |
|------------|------------------|---------------|--------------|
| Double Ram | 10000 | 5000 | Cactus |

23. I hereby certify that the information given above is true and complete to the best of my knowledge and belief.
I further certify I have complied with 19.15.14.9 (A) NMAC ☒ and/or 19.15.14.9 (B) NMAC ☒ if applicable.

Signature:

Printed Name: Electronically filed by Rachael A Overbey

Title: Project Manager

Email Address: roverbey@fmccl.com

Date: 3/2/2023

Phone: 303-570-4057

OIL CONSERVATION DIVISION

Approved By: Paul F Kautz

Title: Geologist

Approved Date: 3/7/2023

Expiration Date: 3/7/2025

Conditions of Approval Attached

District I

1625 N. French Dr., Hobbs, NM 88240
Phone:(575) 393-6161 Fax:(575) 393-0720

District II

811 S. First St., Artesia, NM 88210
Phone:(575) 748-1283 Fax:(575) 748-9720

District III

1000 Rio Brazos Rd., Aztec, NM 87410
Phone:(505) 334-6178 Fax:(505) 334-6170

District IV

1220 S. St Francis Dr., Santa Fe, NM 87505
Phone:(505) 476-3470 Fax:(505) 476-3462

State of New Mexico
Energy, Minerals and Natural Resources
Oil Conservation Division
1220 S. St Francis Dr.
Santa Fe, NM 87505

Form C-102
August 1, 2011

Permit 335554

WELL LOCATION AND ACREAGE DEDICATION PLAT

| | | |
|-------------------------------|---|---|
| 1. API Number 30-025-51163 | 2. Pool Code 61900 | 3. Pool Name VACUUM;BONE SPRING, SOUTH |
| 4. Property Code 333825 | 5. Property Name NORTE STATE COM | 6. Well No. 602H |
| 7. OGRID No. 331595 | 8. Operator Name Franklin Mountain Energy 3, LLC | 9. Elevation 3848 |

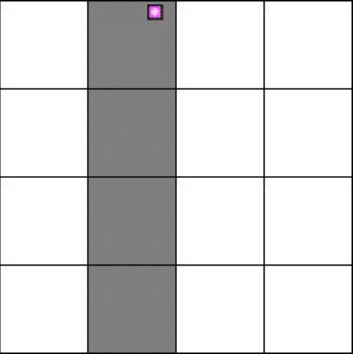
10. Surface Location

| | | | | | | | | | |
|---------------|--------------|-----------------|--------------|--------------|------------------|---------------|-------------------|---------------|---------------|
| UL - Lot C | Section 3 | Township 19S | Range 35E | Lot Idn 3 | Feet From 400 | N/S Line N | Feet From 1995 | E/W Line W | County Lea |
|---------------|--------------|-----------------|--------------|--------------|------------------|---------------|-------------------|---------------|---------------|

11. Bottom Hole Location If Different From Surface

| | | | | | | | | | |
|-------------------------------|---------------------|------------------------|---------------|---------|------------------|---------------|-------------------|---------------|---------------|
| UL - Lot C | Section 27 | Township 18S | Range 35E | Lot Idn | Feet From 150 | N/S Line N | Feet From 2300 | E/W Line W | County Lea |
| 12. Dedicated Acres 160.00 | 13. Joint or Infill | 14. Consolidation Code | 15. Order No. | | | | | | |

NO ALLOWABLE WILL BE ASSIGNED TO THIS COMPLETION UNTIL ALL INTERESTS HAVE BEEN CONSOLIDATED OR A NON-STANDARD UNIT HAS BEEN APPROVED BY THE DIVISION

| | |
|---|---|
|  | <p style="text-align: center;">OPERATOR CERTIFICATION</p> <p><i>I hereby certify that the information contained herein is true and complete to the best of my knowledge and belief, and that this organization either owns a working interest or unleased mineral interest in the land including the proposed bottom hole location(s) or has a right to drill this well at this location pursuant to a contract with an owner of such a mineral or working interest, or to a voluntary pooling agreement or a compulsory pooling order heretofore entered by the division.</i></p> <p>E-Signed By: Rachael A Overbey Title: Project Manager Date: 3/2/2023</p> <hr/> <p style="text-align: center;">SURVEYOR CERTIFICATION</p> <p><i>I hereby certify that the well location shown on this plat was plotted from field notes of actual surveys made by me or under my supervision, and that the same is true and correct to the best of my belief.</i></p> <p>Surveyed By: Paul Buchele Date of Survey: 1/19/2023 Certificate Number: 23782</p> |
|---|---|

District I

1625 N. French Dr., Hobbs, NM 88240
Phone:(575) 393-6161 Fax:(575) 393-0720

District II

811 S. First St., Artesia, NM 88210
Phone:(575) 748-1283 Fax:(575) 748-9720

District III

1000 Rio Brazos Rd., Aztec, NM 87410
Phone:(505) 334-6178 Fax:(505) 334-6170

District IV

1220 S. St Francis Dr., Santa Fe, NM 87505
Phone:(505) 476-3470 Fax:(505) 476-3462

State of New Mexico
Energy, Minerals and Natural Resources
Oil Conservation Division
1220 S. St Francis Dr.
Santa Fe, NM 87505

Form C-102
August 1, 2011

Permit 335554

WELL LOCATION AND ACREAGE DEDICATION PLAT

| | | |
|-------------------------------|---|------------------------------------|
| 1. API Number 30-025-51163 | 2. Pool Code 55610 | 3. Pool Name SCHARB;BONE SPRING |
| 4. Property Code 333825 | 5. Property Name NORTE STATE COM | 6. Well No. 602H |
| 7. OGRID No. 331595 | 8. Operator Name Franklin Mountain Energy 3, LLC | 9. Elevation 3848 |

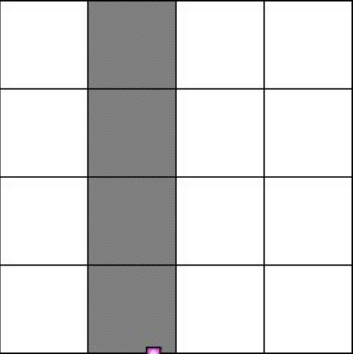
10. Surface Location

| | | | | | | | | | |
|---------------|--------------|-----------------|--------------|--------------|------------------|---------------|-------------------|---------------|---------------|
| UL - Lot C | Section 3 | Township 19S | Range 35E | Lot Idn 3 | Feet From 400 | N/S Line N | Feet From 1995 | E/W Line W | County Lea |
|---------------|--------------|-----------------|--------------|--------------|------------------|---------------|-------------------|---------------|---------------|

11. Bottom Hole Location If Different From Surface

| | | | | | | | | | |
|-------------------------------|---------------------|-----------------|------------------------|---------|----------------|---------------|-------------------|---------------|---------------|
| UL - Lot M | Section 34 | Township 18S | Range 35E | Lot Idn | Feet From 0 | N/S Line S | Feet From 2294 | E/W Line W | County Lea |
| 12. Dedicated Acres 160.00 | 13. Joint or Infill | | 14. Consolidation Code | | | | 15. Order No. | | |

NO ALLOWABLE WILL BE ASSIGNED TO THIS COMPLETION UNTIL ALL INTERESTS HAVE BEEN CONSOLIDATED OR A NON-STANDARD UNIT HAS BEEN APPROVED BY THE DIVISION

| | |
|---|---|
|  | <p style="text-align: center;">OPERATOR CERTIFICATION</p> <p><i>I hereby certify that the information contained herein is true and complete to the best of my knowledge and belief, and that this organization either owns a working interest or unleased mineral interest in the land including the proposed bottom hole location(s) or has a right to drill this well at this location pursuant to a contract with an owner of such a mineral or working interest, or to a voluntary pooling agreement or a compulsory pooling order heretofore entered by the division.</i></p> <p>E-Signed By: Rachael A Overbey Title: Project Manager Date: 3/2/2023</p> <hr/> <p style="text-align: center;">SURVEYOR CERTIFICATION</p> <p><i>I hereby certify that the well location shown on this plat was plotted from field notes of actual surveys made by me or under my supervision, and that the same is true and correct to the best of my belief.</i></p> <p>Surveyed By: Paul Buchele Date of Survey: 1/19/2023 Certificate Number: 23782</p> |
|---|---|

District I

1625 N. French Dr., Hobbs, NM 88240
 Phone:(575) 393-6161 Fax:(575) 393-0720

District II

811 S. First St., Artesia, NM 88210
 Phone:(575) 748-1283 Fax:(575) 748-9720

District III

1000 Rio Brazos Rd., Aztec, NM 87410
 Phone:(505) 334-6178 Fax:(505) 334-6170

District IV

1220 S. St Francis Dr., Santa Fe, NM 87505
 Phone:(505) 476-3470 Fax:(505) 476-3462

State of New Mexico
Energy, Minerals and Natural Resources
Oil Conservation Division
1220 S. St Francis Dr.
Santa Fe, NM 87505

Form APD Conditions

Permit 335554

PERMIT CONDITIONS OF APPROVAL

| | |
|--|--------------------------------|
| Operator Name and Address: Franklin Mountain Energy 3, LLC [331595] 44 Cook Street Denver, CO 80206 | API Number: 30-025-51163 |
| | Well: NORTE STATE COM #602H |

| OCD Reviewer | Condition |
|--------------|--|
| pkautz | Notify OCD 24 hours prior to casing & cement |
| pkautz | Once the well is spud, to prevent ground water contamination through whole or partial conduits from the surface, the operator shall drill without interruption through the fresh water zone or zones and shall immediately set in cement the water protection string |
| pkautz | Once the well is spud, to prevent ground water contamination through whole or partial conduits from the surface, the operator shall drill without interruption through the fresh water zone or zones and shall immediately set in cement the water protection string |
| pkautz | Oil base muds are not to be used until fresh water zones are cased and cemented providing isolation from the oil or diesel. This includes synthetic oils. Oil based mud, drilling fluids and solids must be contained in a steel closed loop system |
| pkautz | Cement is required to circulate on both surface and intermediate1 strings of casing |
| pkautz | The Operator is to notify NMOCD by sundry (Form C-103) within ten (10) days of the well being spud |



Norte State Com 602H

1. Geologic name of surface location: Permian

2. Estimated tops of important geological markers:

| Formations | PROG SS | PROG TVD | Picked TVD | delta | Potential/Issues |
|-------------------------------|---------------|----------------|------------|-------|----------------------------------|
| Cenozoic Alluvium (surface) | 3,855' | 30' | 30' | 0 | Sand/Gravels/unconsolidated |
| Rustler | 2,076 | 1,810' | | | Carbonates |
| Salado | 1,841 | 2,045' | | | Salt, Carbonate & Clastics |
| Base Salt | 922 | 2,963' | | | Shaley Carbonate & Shale |
| Yates | 522 | 3,363' | | | Carbonate & Clastics |
| Seven Rivers | 74 | 3,811' | | | Sandstone - oil/gas/water |
| Queen | -686 | 4,571' | | | Sandstone - oil/gas/water |
| Cherry Canyon | -2,125 | 6,011' | | | Sand/carb/shales - oil/gas/water |
| Bone Spring Lime | -3,581 | 7,467' | | | Shale/Carbonates - oil/gas |
| First Bone Spring Sand | -5,151 | 9,036' | | | Shale/Carbonates - oil/gas |
| Second Bone Spring Carbonates | -5,416 | 9,301' | | | Chert/Carbonate |
| Second Bone Spring Sand | -5,579 | 9,464' | | | Sandstone - oil/gas/water |
| Third Bone Spring Carbonates | -6,010 | 9,895' | | | Shale/Carbonates - oil/gas |
| Third Bone Spring Sand | -6,089 | 9,974' | | | Sandstone - oil/gas/water |
| HZ Target | -6,163 | 10,048' | | | Sandstone - oil/gas/water |
| Wolfcamp | -6,246 | 10,132' | | | Overpressure shale/sand- Oil/Gas |

3. Estimated depth of anticipated fresh water, oil or gas:

| | | |
|----------------------------------|---------|-------------|
| Upper Permian Sands | 0- 400' | Fresh Water |
| Delaware Sands | 6,011' | Oil |
| 1 st Bone Spring Sand | 9,036' | Oil |
| 2 nd Bone Spring Sand | 9,464' | Oil |
| 3 rd Bone Spring Sand | 9,974' | Oil |

No other formations are expected to give up oil, gas or fresh water in measurable quantities. Surface freshwater sands will be protected by setting 13 3/8" casing at 1,900' and circulating cement back to surface.

4. Casing Program:

All casing strings will be run new.

| Casing string | Weight | Grade | Burst | Collapse | Tension | Conn | Length | API design factor | | | |
|-------------------------------------|--------|---------|-------|----------|---------|-----------------------|----------------|-------------------|----------|---------|--------------|
| | | | | | | | | Burst | Collapse | Tension | Coupling |
| Surface 13 3/8" 0-1,900' | 54.5 | J-55 | 2730 | 1130 | 853 | BTC 909 | 1900 | 1.02 | 1.14 | 4.19 | 4.47 |
| Intermediate 9 5/8" 0-4,000' | 40 | HCL-80 | 7430 | 4230 | 916 | BTC 1042 | 4000 | 2.08 | 2.26 | 3.52 | 4.01 |
| Production 7" 0-9,500' | 32 | HCP-110 | 12460 | 10760 | 1025 | CDC-HTQ 1053 | 9500 | 2.10 | 2.42 | 2.54 | 2.61 |
| Production 5 1/2" 9,500'-20,234' | 20 | HCP-110 | 12640 | 12200 | 641 | CDC-HTQ 667 TVD | 10734 10048 | 1.15 | 2.43 | 2.04 | 2.12 2.22 |

Tapered production string will be ran with a X-over installed at the KOP of 9,500'.



Cementing Program:

Cementing Stage tool can be placed in the 1st Intermediate string as a contingency to ensure required TOC to surface.

To increase efficiency of drilling operations and minimize disturbance of the area the batch-drilling approach will be used.

Off-line cementing may be utilized for Surface and Intermediate strings to further optimization of drilling process and reduction of disturbance.

| String Type | Hole Size | Casing Size | Setting Depth | Sacks | Type of cmt | Lead Yield ft ³ /sk | Water gal/sk | TOC ft | Sacks | Type of cmt | Tail Yield ft ³ /sk | Water gal/sk | TOC | Excess |
|-------------|-----------|-------------|---------------|-------|---|--------------------------------|--------------|--------|-------|--|--------------------------------|--------------|------|--------|
| Surf | 17.5 | 13.375 | 1900 | 1016 | 85:15 Compass Poz, 12.8 ppg Class C, 5%Gel, 3#/sk Kol Seal, 4.64#/sk Salt | 2.05 | 11.12 | 0 | 441 | Tail, 14.8 ppg, 100% Class C, 1%CaCl ₂ , 0.1% | 1.34 | 6.35 | 1500 | 100% |
| Int | 12.25 | 9.625 | 4000 | 640 | Lead, 11.3 ppg, HSLD 82 10% Gel, 4%STE, 2#/sk, Gyp Seal | 2.74 | 16.31 | 0 | 201 | Econolite Tail, 14.8 ppg, 100% Class C, 0.08% C-51 | 1.33 | 6.33 | 3600 | 100% |
| Prod | 8.75 | 7 | 0-9500 | 454 | HSLD 9420, 10.5 ppg, Class C, 1#/sk Salt, 4% STE 1% C-45 | 3.99 | 25.51 | 3000 | | | | | | 100% |
| Prod | 8.75 | 5.5 | 9500-20234 | | | | | | 1021 | HSLD 80, 13.ppg , 32#/sk Salt, 4% STE, 1#/sk Gyp Seal | 1.52 | 7.59 | 9500 | 50% |

5. Minimum Specifications for Pressure Control:

The minimum blowout preventer equipment (BOPE) shown in Exhibit #1 will consist of a single ram, mud cross and double ram-type (10,000 psi WP) preventer and an annular preventer (5,000-psi WP). Both units will be hydraulically operated, and the ram-type will be equipped with blind rams on bottom and 4 ½" x 7" variable pipe rams on top. All BOPE will be tested in accordance with Onshore Oil & Gas order No. 2.

Before drilling out of the surface casing, the ram-type BOP and accessory equipment will be tested to 5,000/250 psig and the annular preventer to 5,000/250 psig. The surface casing will be tested to 1500 psi for 30 minutes.

Before drilling out of the intermediate casing, the ram-type BOP and accessory equipment will be tested to 10,000/250 psig and the annular preventer to 5,000/250 psig.

Pipe rams will be operationally checked each 24-hour period. Blind rams will be operationally checked on each trip out of the hole. These checks will be noted on the daily tour sheets.

A hydraulically operated choke will be installed prior to drilling out of the intermediate casing shoe.



6. Types and characteristics of the proposed mud system:

During this procedure we plan to use a Closed-Loop System and haul contents to the required disposal. The applicable depths and properties of the drilling fluid systems are as follows.

| Depth | Type | Weight (ppg) | Viscosity | Water Loss |
|-----------------------------|-------------|--------------|-----------|------------|
| 0 – 1,900' | Fresh - Gel | 8.6-8.8 | 28-34 | N/c |
| 1,900' – 4,000' | Brine | 8.8-10.2 | 28-34 | N/c |
| 4,000' – 20,234' Lateral | Oil Base | 9.0-11.0 | 58-68 | 3 - 6 |

The highest mud weight needed to balance formation is expected to be 10-11 ppg. In order to maintain hole stability, mud weights up to 12 ppg may be utilized.

An electronic pit volume totalizer (PVT) will be utilized on the circulating system, to monitor pit volume, flow rate, pump pressure and stroke rate.

Sufficient mud materials to maintain mud properties and meet minimum lost circulation and weight increase requirements will be kept at the wellsite at all times.

7. Auxiliary well control and monitoring equipment:

(A) A kelly cock will be kept in the drill string at all times.

(B) A full opening drill pipe-stabbing valve (inside BOP) with proper drill pipe connections will be kept on the rig floor at all times.

(C) H₂S monitoring and detection equipment will be utilized from surface casing point to TD.

(D) A wear bushing will be installed in the wellhead prior to drilling out of the surface casing.

8. Logging, testing and coring program:

GR-CCL-CNL Will be run in cased hole during completions phase of operations.

Open-hole logs are not planned for this well.

9. Abnormal conditions, pressures, temperatures and potential hazards:

The estimated bottom-hole temperature at 10,048' TVD (deepest point of the well) is 160F with an estimated maximum bottom-hole pressure (BHP) at the same point of 6,270 psig (based on 12 ppg MW). Hydrogen Sulfide may be present in the area. All necessary precautions will be taken before drilling operations commence. See Hydrogen Sulfide Plan below:

10. Hydrogen Sulfide Plan:

- A. All personnel shall receive proper awareness H₂S training.
- B. Briefing Area: two perpendicular areas will be designated by signs and readily accessible.
- C. Required Emergency Equipment
 - a. Well Control Equipment
 - i. Flare line 150' from wellhead to be ignited by auto ignition sparking system.
 - ii. Choke manifold with a remotely operated hydraulic choke.
 - iii. Mud/gas separator
 - b. Protective equipment for essential personnel
 - i. Breathing Apparatus
 1. Rescue packs (SCBA) – 1 unit shall be placed at each briefing area, 2 shall be stored in a safety trailer on site.



2. Work/Escapes packs – 4 packs shall be stored on the rig floor with sufficient air hose not to restrict work activity
3. Emergency Escape Packs – 4 packs shall be stored in the doghouse for emergency evacuation.
- ii. Auxiliary Rescue Equipment
 1. Stretcher
 2. Two OSHA full body harnesses
 3. 100 feet of 5/8 inches OSHA approved rope
 4. 1-20# class ABC fire extinguisher
- c. H2S Detection and Monitoring Equipment
 - i. A stationary detector with three sensors will be placed in the doghouse if equipped, set to visually alarm at 10 ppm and audible at 14 ppm. The detector will be calibrated a minimum of every 30 days or as needed. The sensors will be placed in the following places:
 1. Rig Floor
 2. Below Rig Floor / Near BOPs
 3. End of flow line or where well bore fluid is being discharged (near shakers)
 - ii. If H2S is encountered, measured values and formations will be provided to the BLM.
- d. Visual Warning Systems
 - i. One color code condition sign will be placed at the entrance to the site reflecting the possible conditions at the site.
 - ii. A colored condition flag will be on display, reflecting the current condition at the site at the time.
 - iii. Two windsocks will be placed in strategic locations, visible from all angles.
- e. Mud Program
 - i. The Mud program will be designed to minimize the volume of H2S circulated to surface. The operator will have the necessary mud products to minimize hazards while drilling in H2S bearing zones.
- f. Metallurgy
 - i. All drill strings, casings, tubing, wellhead, blowout preventer, drilling spool, kill lines, choke manifold and lines, and valves shall be suitable for H2S service at the anticipated operating pressures to prevent sour sulfide stress cracking.
- g. Communication
 - i. Communication will be via cell phones and walkie talkies on location.

Based on concentrations of offset wells, proximity to main roads, and distance to populated areas, the radius of exposure created by a potential release was determined to be minimal and low enough to not necessitate an H2S contingency plan. This will be reevaluated during wellbore construction if H2S is observed and after the well is on production.

**11. Anticipated starting date and duration of operations:**

The drilling operations on the well should be finished in approximately one month. However, in order to minimize disturbance in the area and to improve efficiency Franklin Mountain is planning to drill all the wells on the pad prior to commence completion operations. To even further reduce the time heavy machinery is used the "batch drilling" method may be used. A batch drilling sequence sundry will be submitted for State approval prior to spud. A drilling rig with walking/skidding capabilities will be used.

12. Disposal/environmental concerns:

- (A) Drilled cuttings will be hauled to and disposed of in a state-certified disposal site.
- (B) Non-hazardous waste mud/cement from the drilling process will also be hauled to and disposed of in a state-certified disposal site.
- (C) Garbage will be hauled to the Pecos City Landfill.
- (D) Sewage (grey water) will be hauled to the Carlsbad City Landfill

13. Wellhead:

A multi-bowl wellhead system will be utilized.

After running the 13 3/8" surface casing, a 13-5/8" BOP/BOPE system with a minimum working pressure of 10,000 psi will be installed on the wellhead system and will be pressure tested to 250 psi low followed by a 5,000 psi pressure test. This pressure test will be repeated at least every 21 days.

The minimum working pressure of the BOP and related BOPE required for drilling below the surface casing shoe shall be 5,000 psi.

The wellhead will be installed by a third party welder while being monitored by WH vendor's representative.

All BOP equipment will be tested utilizing a conventional test plug. Not a cup or J-packer type.

A solid steel body pack-off will be utilized after running and cementing the intermediate casing string. After installation of the first intermediate string the pack-off and lower flanges will be pressure tested to 5000 psi.

Both the surface and intermediate casing strings will be tested as per NMOCD Rules to the one-third of manufacture's rated yield pressure, no less than 600 psi, but not greater than 1,500 psi.

14. Additional variance requests

A. Casing.

1. Variance is requested to wave/reduce the centralizer requirements for the 7" and 5 1/2" production casing due to the tight clearance with 8 3/4" hole.

District I
1625 N. French Dr., Hobbs, NM 88240
Phone: (575) 393-6161 Fax: (575) 393-0720
District II
811 S. First St., Artesia, NM 88210
Phone: (575) 748-1283 Fax: (575) 748-9720
District III
1000 Rio Brazos Road, Aztec, NM 87410
Phone: (505) 334-6178 Fax: (505) 334-6170
District IV
1220 S. St. Francis Dr., Santa Fe, NM 87505
Phone: (505) 476-3460 Fax: (505) 476-3462

State of New Mexico
Energy, Minerals & Natural Resources Department
OIL CONSERVATION DIVISION
1220 South St. Francis Dr.
Santa Fe, NM 87505

Form C-102
Revised August 1, 2011
Submit one copy to appropriate
District Office

☐ AMENDED REPORT

WELL LOCATION AND ACREAGE DEDICATION PLAT

| | | |
|--|---|---|
| ¹ API Number 30-025-51163 | ² Pool Code 61900 | ³ Pool Name VACUUM;BONE SPRING, SOUTH |
| ⁴ Property Code 333825 | Property Name NORTE STATE COM | |
| ⁷ OGRID No. 331595 | ⁸ Operator Name FRANKLIN MOUNTAIN ENERGY 3, LLC | ⁶ Well Number 602H |
| | | ⁹ Elevation 3848.0' |

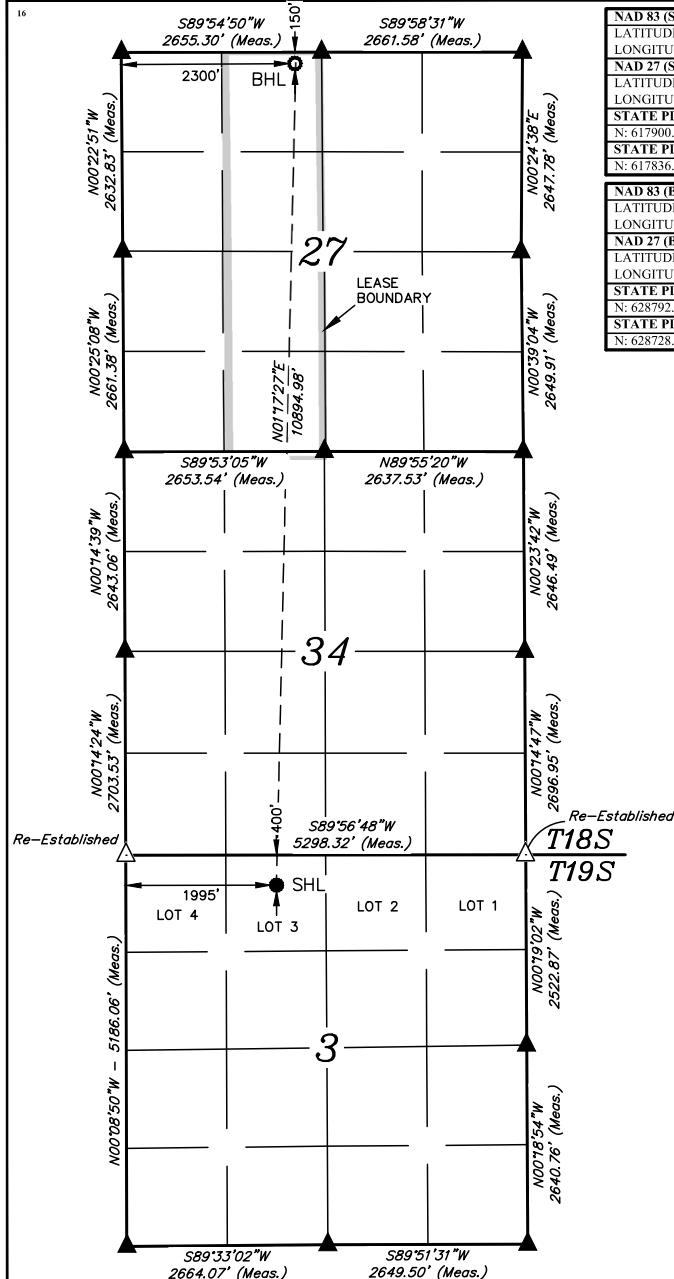
¹⁰ Surface Location

| UL or lot no. | Section | Township | Range | Lot Idn | Feet from the | North/South line | Feet from the | East/West line | County |
|---------------|---------|----------|-------|---------|---------------|------------------|---------------|----------------|--------|
| 3 | 3 | 19S | 35E | | 400 | NORTH | 1995 | WEST | LEA |

¹¹ Bottom Hole Location If Different From Surface

| UL or lot no. | Section | Township | Range | Lot Idn | Feet from the | North/South line | Feet from the | East/West line | County |
|--------------------------------------|-------------------------------|----------------------------------|-------|-------------------------|---------------|------------------|---------------|----------------|--------|
| C | 27 | 18S | 35E | | 150 | NORTH | 2300 | WEST | LEA |
| ¹² Dedicated Acres 160 | ¹³ Joint or Infill | ¹⁴ Consolidation Code | | ¹⁵ Order No. | | | | | |

No allowable will be assigned to this completion until all interests have been consolidated or a non-standard unit has been approved by the division.



| |
|--|
| NAD 83 (SURFACE HOLE LOCATION) LATITUDE = 32°41'43.88" (32.695522°) LONGITUDE = 103°26'50.32" (103.447312°) |
| NAD 27 (SURFACE HOLE LOCATION) LATITUDE = 32°41'43.44" (32.695399°) LONGITUDE = 103°26'48.55" (103.446821°) |
| STATE PLANE NAD 83 (N.M. EAST) N: 617900.58' E: 813904.64' |
| STATE PLANE NAD 27 (N.M. EAST) N: 617836.86' E: 772724.57' |
| NAD 83 (BOTTOM HOLE LOCATION) LATITUDE = 32°43'31.62" (32.725451°) LONGITUDE = 103°26'46.93" (103.446368°) |
| NAD 27 (BOTTOM HOLE LOCATION) LATITUDE = 32°43'31.18" (32.725328°) LONGITUDE = 103°26'45.15" (103.445876°) |
| STATE PLANE NAD 83 (N.M. EAST) N: 628792.00' E: 814103.81' |
| STATE PLANE NAD 27 (N.M. EAST) N: 628728.01' E: 772924.10' |

¹⁷ OPERATOR
CERTIFICATION

I hereby certify that the information contained herein is true and complete to the best of my knowledge and belief, and that this organization either owns a working interest or unleased mineral interest in the land including the proposed bottom hole location or has a right to drill this well at this location pursuant to a contract with an owner of such a mineral or working interest, or to a voluntary pooling agreement or a compulsory pooling order heretofore entered by the division.

Signature: *Rachael Overbey* Date: 2/21/2023

Printed Name: Rachael Overbey

E-mail Address: roverbey@finelc.com

¹⁸ SURVEYOR
CERTIFICATION

I hereby certify that the well location shown on this plat was plotted from field notes of actual surveys made by me or under my supervision, and that the same is true and correct to the best of my belief.

January 17, 2023

Date of Survey

Signature and Seal of Professional Surveyor:



Certificate Number:

NOTE:

- Distances referenced on plat to section lines are perpendicular.
- Basis of Bearings is a Transverse Mercator Projection with a Central Meridian of W 103°53'00" (NAD 83)
- Section breakdown information for this plat may be obtained from Uintah Engineering & Land Surveying.

- = SURFACE HOLE LOCATION
- = BOTTOM HOLE LOCATION
- ▲ = SECTION CORNER LOCATED
- △ = SECTION CORNER RE-ESTABLISHED. (Not Set on Ground.)



SCALE

DRAWN BY: Z.L. 01-19-23

District I
1625 N. French Dr., Hobbs, NM 88240
Phone: (575) 393-6161 Fax: (575) 393-0720
District II
811 S. First St., Artesia, NM 88210
Phone: (575) 748-1283 Fax: (575) 748-9720
District III
1000 Rio Brazos Road, Aztec, NM 87410
Phone: (505) 334-6178 Fax: (505) 334-6170
District IV
1220 S. St. Francis Dr., Santa Fe, NM 87505
Phone: (505) 476-3460 Fax: (505) 476-3462

State of New Mexico
Energy, Minerals & Natural Resources Department
OIL CONSERVATION DIVISION
1220 South St. Francis Dr.
Santa Fe, NM 87505

Form C-102
Revised August 1, 2011
Submit one copy to appropriate
District Office

☐ AMENDED REPORT

WELL LOCATION AND ACREAGE DEDICATION PLAT

| | | |
|--|---|--|
| ¹ API Number 30-025-51163 | ² Pool Code 55610 | ³ Pool Name SCHARB;BONE SPRING |
| ⁴ Property Code 333825 | ⁵ Property Name NORTE STATE COM | ⁶ Well Number 602H |
| ⁷ OGRID No. 331595 | ⁸ Operator Name FRANKLIN MOUNTAIN ENERGY 3, LLC | ⁹ Elevation 3848.0' |

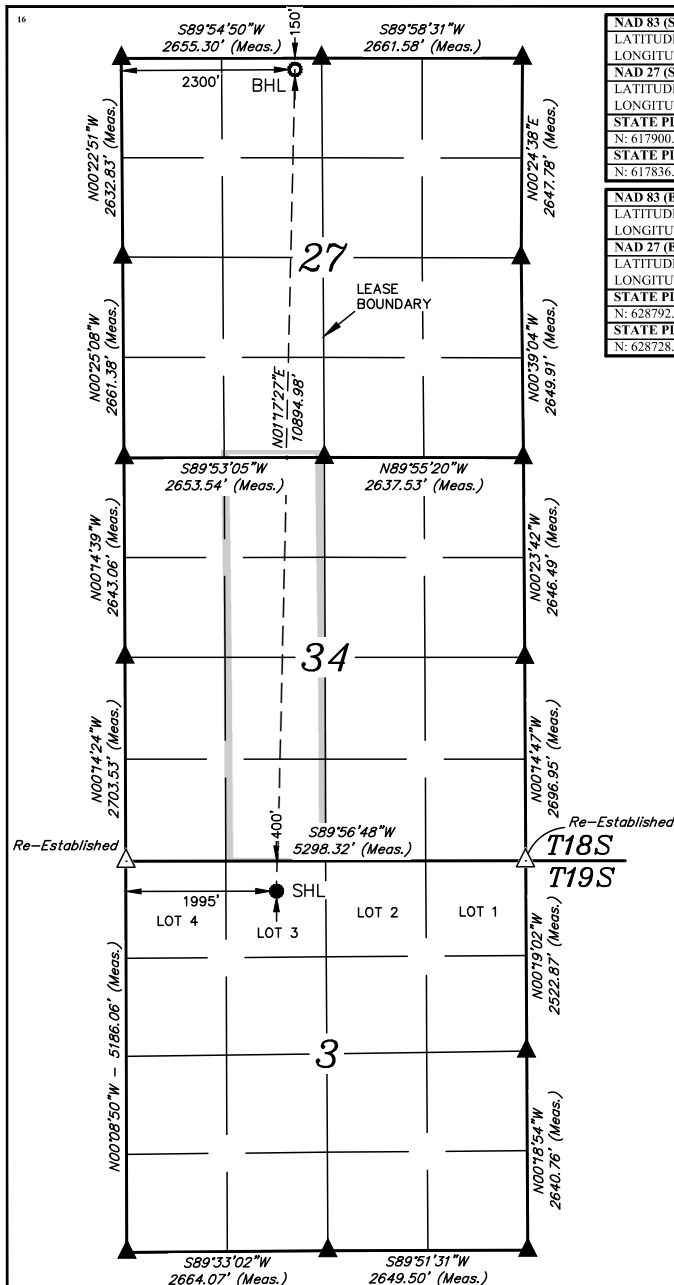
¹⁰ Surface Location

| UL or lot no. | Section | Township | Range | Lot Idn | Feet from the | North/South line | Feet from the | East/West line | County |
|---------------|---------|----------|-------|---------|---------------|------------------|---------------|----------------|--------|
| 3 | 3 | 19S | 35E | | 400 | NORTH | 1995 | WEST | LEA |

¹¹ Bottom Hole Location If Different From Surface

| UL or lot no. | Section | Township | Range | Lot Idn | Feet from the | North/South line | Feet from the | East/West line | County |
|--------------------------------------|-------------------------------|----------------------------------|-------------------------|---------|---------------|------------------|---------------|----------------|--------|
| C | 27 | 18S | 35E | | 150 | NORTH | 2300 | WEST | LEA |
| ¹² Dedicated Acres 160 | ¹³ Joint or Infill | ¹⁴ Consolidation Code | ¹⁵ Order No. | | | | | | |

No allowable will be assigned to this completion until all interests have been consolidated or a non-standard unit has been approved by the division.



| |
|--|
| NAD 83 (SURFACE HOLE LOCATION) LATITUDE = 32°41'43.88" (32.695522°) LONGITUDE = 103°26'50.32" (103.447312°) |
| NAD 27 (SURFACE HOLE LOCATION) LATITUDE = 32°41'43.44" (32.695399°) LONGITUDE = 103°26'48.55" (103.446821°) |
| STATE PLANE NAD 83 (N.M. EAST) N: 617900.58' E: 813904.64' |
| STATE PLANE NAD 27 (N.M. EAST) N: 617836.86' E: 772724.57' |
| NAD 83 (BOTTOM HOLE LOCATION) LATITUDE = 32°43'31.62" (32.725451°) LONGITUDE = 103°26'46.93" (103.446368°) |
| NAD 27 (BOTTOM HOLE LOCATION) LATITUDE = 32°43'31.18" (32.725328°) LONGITUDE = 103°26'45.15" (103.445876°) |
| STATE PLANE NAD 83 (N.M. EAST) N: 628792.00' E: 814103.81' |
| STATE PLANE NAD 27 (N.M. EAST) N: 628728.01' E: 772924.10' |

¹⁷ OPERATOR
CERTIFICATION

I hereby certify that the information contained herein is true and complete to the best of my knowledge and belief, and that this organization either owns a working interest or unleased mineral interest in the land including the proposed bottom hole location or has a right to drill this well at this location pursuant to a contract with an owner of such a mineral or working interest, or to a voluntary pooling agreement or a compulsory pooling order heretofore entered by the division.

Signature: *Rachael Overbey* Date: 2/21/2023

Rachael Overbey

Printed Name

roverbey@finelc.com

E-mail Address

¹⁸ SURVEYOR
CERTIFICATION

I hereby certify that the well location shown on this plat was plotted from field notes of actual surveys made by me or under my supervision, and that the same is true and correct to the best of my belief.

January 17, 2023

Date of Survey

Signature and Seal of Professional Surveyor:



Certificate Number:

NOTE:

- Distances referenced on plat to section lines are perpendicular.
- Basis of Bearings is a Transverse Mercator Projection with a Central Meridian of W 103°53'00" (NAD 83)
- Section breakdown information for this plat may be obtained from Uintah Engineering & Land Surveying.

● = SURFACE HOLE LOCATION

○ = BOTTOM HOLE LOCATION

▲ = SECTION CORNER LOCATED

△ = SECTION CORNER RE-ESTABLISHED.
(Not Set on Ground.)



SCALE

DRAWN BY: Z.L. 01-19-23

Project: Lea County, NM (NAD83)
 Site: Sec 3-T19S-R35E (Eagle/Norte State)
 Well: Norte State Com 602H
 Wellbore: OH
 Design: Plan #1
 Rig:



Azimuths to Grid North
 True North: -0.48°
 Magnetic North: 5.74°

Magnetic Field
 Strength: 47647.8nT
 Dip Angle: 60.52°
 Date: 2/17/2023
 Model: HDGM2023

Total Magnetic Correction: 5.74°

PROJECT DETAILS: Lea County, NM (NAD83)

Geodetic System: US State Plane 1983
 Datum: North American Datum 1983
 Ellipsoid: GRS 1980
 Zone: New Mexico Eastern Zone

Reference Datum: GE 3855' + KB 30' @ 3885.00usft

FORMATION TOP DETAILS

| TVDPth | MDPath | Formation |
|----------|----------|-------------------------------|
| 30.00 | 30.00 | Cenozoic Alluvium (surface) |
| 1810.00 | 1810.00 | Rustler |
| 2045.00 | 2045.00 | Salado |
| 2963.00 | 2963.18 | Base Salt |
| 3363.00 | 3363.73 | Yates |
| 3811.00 | 3814.32 | Seven Rivers |
| 4571.00 | 4583.79 | Queen |
| 6011.00 | 6041.74 | Cherry Canyon |
| 7467.00 | 7509.22 | Bone Spring Lime |
| 9036.00 | 9078.22 | First Bone Spring Sand |
| 9301.00 | 9343.22 | Second Bone Spring Carbonates |
| 9464.00 | 9506.22 | Second Bone Spring Sand |
| 9895.00 | 9988.62 | Third Bone Springs Carbonates |
| 9974.00 | 10122.84 | Third Bone Springs Sand |
| 10048.00 | 10417.26 | HZ Target at Landing |

SHL

RKB Elevation: GE 3855' + KB 30' @ 3885.00usft

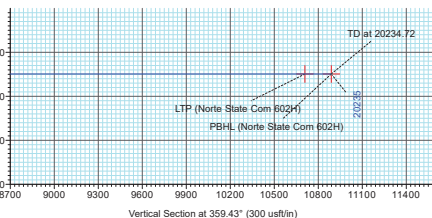
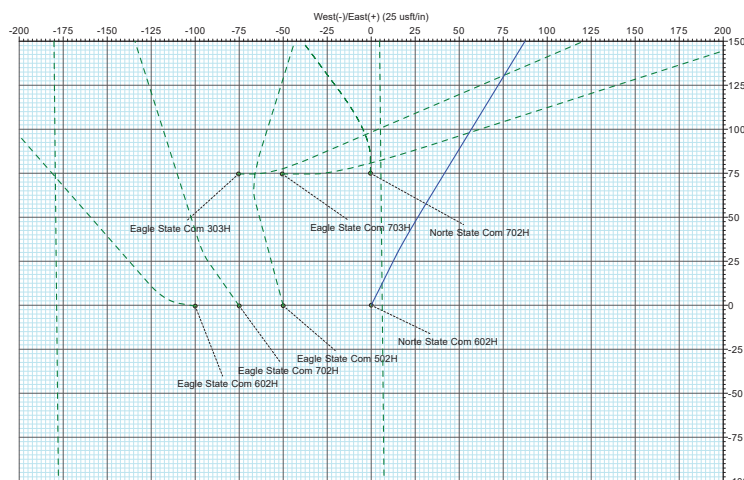
| +N/-S | +E/-W | Northing | Easting | Latitude | Longitude | Slot |
|-------|-------|-----------|-----------|------------|--------------|------|
| 0.00 | 0.00 | 617900.58 | 813904.64 | 32.6955219 | -103.4473118 | |

SECTION DETAILS

| MD | Inc | Azi | TVD | +N/-S | +E/-W | Dleg | TFace | VSECT | Target |
|----------|-------|--------|----------|----------|--------|-------|----------|----------|-----------------------------|
| 0.00 | 0.00 | 0.00 | 0.00 | 0.00 | 0.00 | 0.00 | 0.0000 | 0.00 | |
| 2700.00 | 0.00 | 0.00 | 2700.00 | 0.00 | 0.00 | 0.00 | 0.0000 | 0.00 | |
| 2900.00 | 3.00 | 26.58 | 2899.91 | 4.68 | 2.34 | 1.50 | 26.5800 | 4.66 | |
| 3400.00 | 3.00 | 26.58 | 3399.22 | 28.08 | 14.05 | 0.00 | 0.0000 | 27.94 | |
| 3801.04 | 9.00 | 31.38 | 3797.89 | 64.28 | 35.10 | 1.50 | 7.1732 | 63.93 | |
| 6774.23 | 9.00 | 31.38 | 6734.47 | 461.36 | 277.27 | 0.00 | 0.0000 | 458.59 | |
| 7374.22 | 0.00 | 359.52 | 7332.00 | 501.51 | 301.76 | 1.50 | 180.0000 | 498.49 | |
| 9517.26 | 0.00 | 359.52 | 9475.04 | 501.51 | 301.76 | 0.00 | 0.0000 | 498.49 | |
| 10417.26 | 90.00 | 359.43 | 10048.00 | 1074.44 | 296.10 | 10.00 | 359.4343 | 1071.45 | |
| 20234.72 | 90.00 | 359.43 | 10048.00 | 10891.42 | 199.17 | 0.00 | 0.0000 | 10888.91 | PBHL (Norte State Com 602H) |

WELLBORE TARGET DETAILS

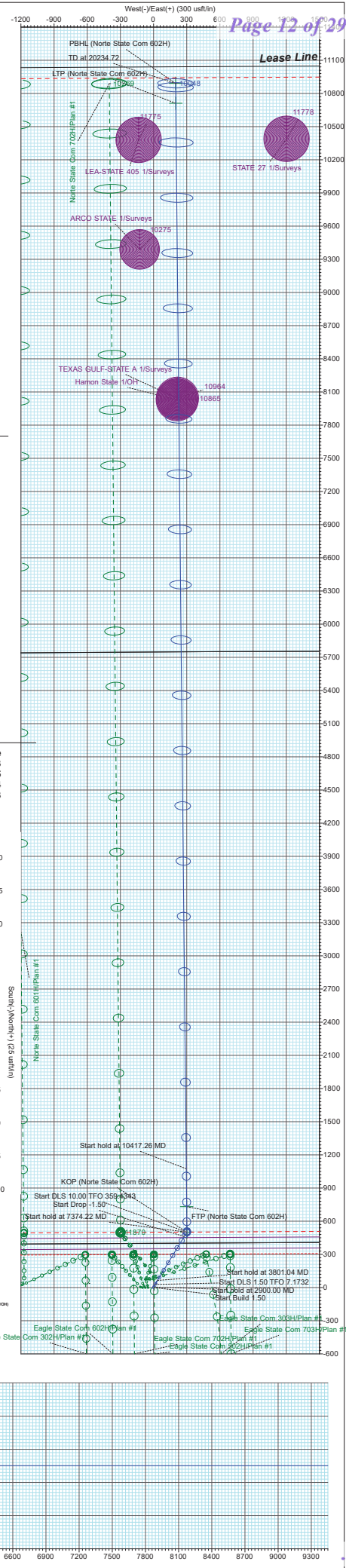
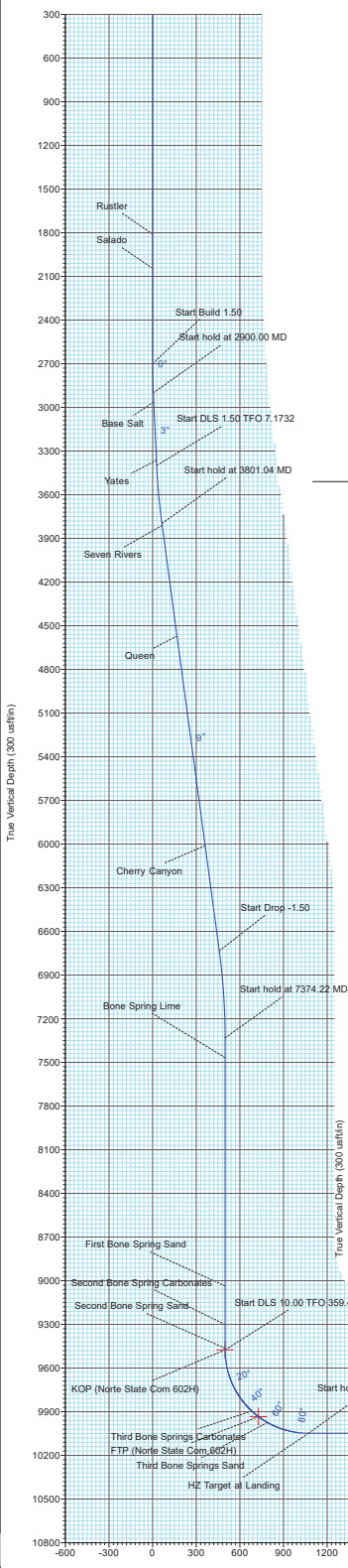
| Name | TVD | +N/-S | +E/-W | Northing | Easting | Latitude | Longitude |
|-----------------------------|----------|----------|--------|-----------|-----------|------------|--------------|
| KOP (Norte State Com 602H) | 9475.04 | 501.51 | 301.76 | 618402.09 | 814206.40 | 32.6968933 | -103.4463173 |
| FTP (Norte State Com 602H) | 9934.01 | 731.49 | 299.48 | 618632.07 | 814204.12 | 32.6975254 | -103.4463185 |
| LTP (Norte State Com 602H) | 10048.00 | 10711.41 | 200.95 | 628611.99 | 814105.59 | 32.7249561 | -103.4463674 |
| PBHL (Norte State Com 602H) | 10048.00 | 10891.42 | 199.17 | 628792.00 | 814103.81 | 32.7254509 | -103.4463683 |



Sec 3-T19S-R35E (Eagle/Norte State) Norte State Com 602H Plan #1 (Norte State Com 602H)

Created By: RCW Date: 10/16/2023

Checked: Date:



Franklin Mountain Energy

Lea County, NM (NAD83)

Sec 3-T19S-R35E (Eagle/Norte State)

Norte State Com 602H

OH

Plan: Plan #1

Standard Planning Report - Geographic

21 February, 2023



Total Directional

Planning Report - Geographic



| | | | |
|------------------|-------------------------------------|-------------------------------------|---------------------------------|
| Database: | EDM 5000.1 Single User Db | Local Co-ordinate Reference: | Well Norte State Com 602H |
| Company: | Franklin Mountain Energy | TVD Reference: | GE 3855' + KB 30' @ 3885.00usft |
| Project: | Lea County, NM (NAD83) | MD Reference: | GE 3855' + KB 30' @ 3885.00usft |
| Site: | Sec 3-T19S-R35E (Eagle/Norte State) | North Reference: | Grid |
| Well: | Norte State Com 602H | Survey Calculation Method: | Minimum Curvature |
| Wellbore: | OH | | |
| Design: | Plan #1 | | |

| | | | |
|--------------------|---------------------------|----------------------|----------------|
| Project | Lea County, NM (NAD83) | | |
| Map System: | US State Plane 1983 | System Datum: | Mean Sea Level |
| Geo Datum: | North American Datum 1983 | | |
| Map Zone: | New Mexico Eastern Zone | | |

| | | | |
|------------------------------|-------------------------------------|---------------------|-----------------|
| Site | Sec 3-T19S-R35E (Eagle/Norte State) | | |
| Site Position: | | Northing: | 617,968.58 usft |
| From: | Map | Easting: | 812,554.48 usft |
| Position Uncertainty: | 0.00 usft | Slot Radius: | 13-3/16 " |
| | | Latitude: | 32.6957397 |
| | | Longitude: | -103.4516984 |

| Well | Norte State Com 602H | | | | | |
|----------------------|----------------------|-----------|---------------------|-----------------|---------------|---------------|
| Well Position | +N/-S | 0.00 usft | Northing: | 617,900.58 usft | Latitude: | 32.6955219 |
| | +E/-W | 0.00 usft | Easting: | 813,904.64 usft | Longitude: | -103.4473118 |
| Position Uncertainty | | 0.00 usft | Wellhead Elevation: | usft | Ground Level: | 3,855.00 usft |
| Grid Convergence: | 0.4787 ° | | | | | |

| | | | | | |
|------------------|-------------------|--------------------|------------------------|----------------------|----------------------------|
| Wellbore | OH | | | | |
| Magnetics | Model Name | Sample Date | Declination (°) | Dip Angle (°) | Field Strength (nT) |
| | HDGM2023 | 2/17/2023 | 6.2167 | 60.5167 | 47,647.80000000 |

| | | | | |
|--------------------------|--------------------------------|---------------------|----------------------|----------------------|
| Design | Plan #1 | | | |
| Audit Notes: | | | | |
| Version: | Phase: | PLAN | Tie On Depth: | 0.00 |
| Vertical Section: | Depth From (TVD) (usft) | +N/-S (usft) | +E/-W (usft) | Direction (°) |
| | 0.00 | 0.00 | 0.00 | 359.43 |

| | | | | |
|---------------------------------|------------------------|--------------------------|------------------|----------------|
| Plan Survey Tool Program | Date | 2/20/2023 | | |
| Depth From (usft) | Depth To (usft) | Survey (Wellbore) | Tool Name | Remarks |
| 1 | 0.00 | 20,234.68 Plan #1 (OH) | MWD+HDGM | |
| | | | OWSG MWD + HDGM | |

Total Directional
Planning Report - Geographic



| | | | |
|------------------|-------------------------------------|-------------------------------------|---------------------------------|
| Database: | EDM 5000.1 Single User Db | Local Co-ordinate Reference: | Well Norte State Com 602H |
| Company: | Franklin Mountain Energy | TVD Reference: | GE 3855' + KB 30' @ 3885.00usft |
| Project: | Lea County, NM (NAD83) | MD Reference: | GE 3855' + KB 30' @ 3885.00usft |
| Site: | Sec 3-T19S-R35E (Eagle/Norte State) | North Reference: | Grid |
| Well: | Norte State Com 602H | Survey Calculation Method: | Minimum Curvature |
| Wellbore: | OH | | |
| Design: | Plan #1 | | |

| Plan Sections | | | | | | | | | | |
|-----------------------|-----------------|-------------|-----------------------|--------------|--------------|-------------------------|------------------------|-----------------------|----------|---------------------|
| Measured Depth (usft) | Inclination (°) | Azimuth (°) | Vertical Depth (usft) | +N/-S (usft) | +E/-W (usft) | Dogleg Rate (°/100usft) | Build Rate (°/100usft) | Turn Rate (°/100usft) | TFO (°) | Target |
| 0.00 | 0.00 | 0.00 | 0.00 | 0.00 | 0.00 | 0.00 | 0.00 | 0.00 | 0.0000 | |
| 2,700.00 | 0.00 | 0.00 | 2,700.00 | 0.00 | 0.00 | 0.00 | 0.00 | 0.00 | 0.0000 | |
| 2,900.00 | 3.00 | 26.58 | 2,899.91 | 4.68 | 2.34 | 1.50 | 1.50 | 0.00 | 26.5800 | |
| 3,400.00 | 3.00 | 26.58 | 3,399.22 | 28.08 | 14.05 | 0.00 | 0.00 | 0.00 | 0.0000 | |
| 3,801.04 | 9.00 | 31.38 | 3,797.89 | 64.28 | 35.10 | 1.50 | 1.50 | 1.20 | 7.1732 | |
| 6,774.23 | 9.00 | 31.38 | 6,734.47 | 461.36 | 277.27 | 0.00 | 0.00 | 0.00 | 0.0000 | |
| 7,374.22 | 0.00 | 359.52 | 7,332.00 | 501.51 | 301.76 | 1.50 | -1.50 | 0.00 | 180.0000 | |
| 9,517.26 | 0.00 | 359.52 | 9,475.04 | 501.51 | 301.76 | 0.00 | 0.00 | 0.00 | 0.0000 | |
| 10,417.26 | 90.00 | 359.43 | 10,048.00 | 1,074.44 | 296.10 | 10.00 | 10.00 | -0.01 | 359.4343 | |
| 20,234.72 | 90.00 | 359.43 | 10,048.00 | 10,891.42 | 199.17 | 0.00 | 0.00 | 0.00 | 0.0000 | PBHL (Norte State) |

Total Directional Planning Report - Geographic



| | | | |
|------------------|-------------------------------------|-------------------------------------|---------------------------------|
| Database: | EDM 5000.1 Single User Db | Local Co-ordinate Reference: | Well Norte State Com 602H |
| Company: | Franklin Mountain Energy | TVD Reference: | GE 3855' + KB 30' @ 3885.00usft |
| Project: | Lea County, NM (NAD83) | MD Reference: | GE 3855' + KB 30' @ 3885.00usft |
| Site: | Sec 3-T19S-R35E (Eagle/Norte State) | North Reference: | Grid |
| Well: | Norte State Com 602H | Survey Calculation Method: | Minimum Curvature |
| Wellbore: | OH | | |
| Design: | Plan #1 | | |

| Planned Survey | | | | | | | | | |
|-----------------------------|--------------------|----------------|-----------------------------|-----------------|-----------------|---------------------------|--------------------------|------------|--------------|
| Measured Depth (usft) | Inclination (°) | Azimuth (°) | Vertical Depth (usft) | +N/-S (usft) | +E/-W (usft) | Map Northing (usft) | Map Easting (usft) | Latitude | Longitude |
| 0.00 | 0.00 | 0.00 | 0.00 | 0.00 | 0.00 | 617,900.58 | 813,904.64 | 32.6955219 | -103.4473118 |
| 30.00 | 0.00 | 0.00 | 30.00 | 0.00 | 0.00 | 617,900.58 | 813,904.64 | 32.6955219 | -103.4473118 |
| Cenozoic Alluvium (surface) | | | | | | | | | |
| 100.00 | 0.00 | 0.00 | 100.00 | 0.00 | 0.00 | 617,900.58 | 813,904.64 | 32.6955219 | -103.4473118 |
| 200.00 | 0.00 | 0.00 | 200.00 | 0.00 | 0.00 | 617,900.58 | 813,904.64 | 32.6955219 | -103.4473118 |
| 300.00 | 0.00 | 0.00 | 300.00 | 0.00 | 0.00 | 617,900.58 | 813,904.64 | 32.6955219 | -103.4473118 |
| 400.00 | 0.00 | 0.00 | 400.00 | 0.00 | 0.00 | 617,900.58 | 813,904.64 | 32.6955219 | -103.4473118 |
| 500.00 | 0.00 | 0.00 | 500.00 | 0.00 | 0.00 | 617,900.58 | 813,904.64 | 32.6955219 | -103.4473118 |
| 600.00 | 0.00 | 0.00 | 600.00 | 0.00 | 0.00 | 617,900.58 | 813,904.64 | 32.6955219 | -103.4473118 |
| 700.00 | 0.00 | 0.00 | 700.00 | 0.00 | 0.00 | 617,900.58 | 813,904.64 | 32.6955219 | -103.4473118 |
| 800.00 | 0.00 | 0.00 | 800.00 | 0.00 | 0.00 | 617,900.58 | 813,904.64 | 32.6955219 | -103.4473118 |
| 900.00 | 0.00 | 0.00 | 900.00 | 0.00 | 0.00 | 617,900.58 | 813,904.64 | 32.6955219 | -103.4473118 |
| 1,000.00 | 0.00 | 0.00 | 1,000.00 | 0.00 | 0.00 | 617,900.58 | 813,904.64 | 32.6955219 | -103.4473118 |
| 1,100.00 | 0.00 | 0.00 | 1,100.00 | 0.00 | 0.00 | 617,900.58 | 813,904.64 | 32.6955219 | -103.4473118 |
| 1,200.00 | 0.00 | 0.00 | 1,200.00 | 0.00 | 0.00 | 617,900.58 | 813,904.64 | 32.6955219 | -103.4473118 |
| 1,300.00 | 0.00 | 0.00 | 1,300.00 | 0.00 | 0.00 | 617,900.58 | 813,904.64 | 32.6955219 | -103.4473118 |
| 1,400.00 | 0.00 | 0.00 | 1,400.00 | 0.00 | 0.00 | 617,900.58 | 813,904.64 | 32.6955219 | -103.4473118 |
| 1,500.00 | 0.00 | 0.00 | 1,500.00 | 0.00 | 0.00 | 617,900.58 | 813,904.64 | 32.6955219 | -103.4473118 |
| 1,600.00 | 0.00 | 0.00 | 1,600.00 | 0.00 | 0.00 | 617,900.58 | 813,904.64 | 32.6955219 | -103.4473118 |
| 1,700.00 | 0.00 | 0.00 | 1,700.00 | 0.00 | 0.00 | 617,900.58 | 813,904.64 | 32.6955219 | -103.4473118 |
| 1,800.00 | 0.00 | 0.00 | 1,800.00 | 0.00 | 0.00 | 617,900.58 | 813,904.64 | 32.6955219 | -103.4473118 |
| 1,810.00 | 0.00 | 0.00 | 1,810.00 | 0.00 | 0.00 | 617,900.58 | 813,904.64 | 32.6955219 | -103.4473118 |
| Rustler | | | | | | | | | |
| 1,900.00 | 0.00 | 0.00 | 1,900.00 | 0.00 | 0.00 | 617,900.58 | 813,904.64 | 32.6955219 | -103.4473118 |
| 2,000.00 | 0.00 | 0.00 | 2,000.00 | 0.00 | 0.00 | 617,900.58 | 813,904.64 | 32.6955219 | -103.4473118 |
| 2,045.00 | 0.00 | 0.00 | 2,045.00 | 0.00 | 0.00 | 617,900.58 | 813,904.64 | 32.6955219 | -103.4473118 |
| Salado | | | | | | | | | |
| 2,100.00 | 0.00 | 0.00 | 2,100.00 | 0.00 | 0.00 | 617,900.58 | 813,904.64 | 32.6955219 | -103.4473118 |
| 2,200.00 | 0.00 | 0.00 | 2,200.00 | 0.00 | 0.00 | 617,900.58 | 813,904.64 | 32.6955219 | -103.4473118 |
| 2,300.00 | 0.00 | 0.00 | 2,300.00 | 0.00 | 0.00 | 617,900.58 | 813,904.64 | 32.6955219 | -103.4473118 |
| 2,400.00 | 0.00 | 0.00 | 2,400.00 | 0.00 | 0.00 | 617,900.58 | 813,904.64 | 32.6955219 | -103.4473118 |
| 2,500.00 | 0.00 | 0.00 | 2,500.00 | 0.00 | 0.00 | 617,900.58 | 813,904.64 | 32.6955219 | -103.4473118 |
| 2,600.00 | 0.00 | 0.00 | 2,600.00 | 0.00 | 0.00 | 617,900.58 | 813,904.64 | 32.6955219 | -103.4473118 |
| 2,700.00 | 0.00 | 0.00 | 2,700.00 | 0.00 | 0.00 | 617,900.58 | 813,904.64 | 32.6955219 | -103.4473118 |
| 2,800.00 | 1.50 | 26.58 | 2,799.99 | 1.17 | 0.59 | 617,901.75 | 813,905.22 | 32.6955251 | -103.4473098 |
| 2,900.00 | 3.00 | 26.58 | 2,899.91 | 4.68 | 2.34 | 617,905.27 | 813,906.98 | 32.6955347 | -103.4473040 |
| 2,963.18 | 3.00 | 26.58 | 2,963.00 | 7.64 | 3.82 | 617,908.22 | 813,908.46 | 32.6955428 | -103.4472992 |
| Base Salt | | | | | | | | | |
| 3,000.00 | 3.00 | 26.58 | 2,999.77 | 9.36 | 4.68 | 617,909.95 | 813,909.32 | 32.6955475 | -103.4472963 |
| 3,100.00 | 3.00 | 26.58 | 3,099.63 | 14.04 | 7.03 | 617,914.63 | 813,911.66 | 32.6955603 | -103.4472886 |
| 3,200.00 | 3.00 | 26.58 | 3,199.50 | 18.72 | 9.37 | 617,919.31 | 813,914.01 | 32.6955731 | -103.4472808 |
| 3,300.00 | 3.00 | 26.58 | 3,299.36 | 23.40 | 11.71 | 617,923.99 | 813,916.35 | 32.6955859 | -103.4472731 |
| 3,363.73 | 3.00 | 26.58 | 3,363.00 | 26.39 | 13.20 | 617,926.97 | 813,917.84 | 32.6955941 | -103.4472682 |
| Yates | | | | | | | | | |
| 3,400.00 | 3.00 | 26.58 | 3,399.22 | 28.08 | 14.05 | 617,928.67 | 813,918.69 | 32.6955987 | -103.4472653 |
| 3,500.00 | 4.49 | 28.97 | 3,499.01 | 33.85 | 17.12 | 617,934.43 | 813,921.76 | 32.6956145 | -103.4472552 |
| 3,600.00 | 5.99 | 30.17 | 3,598.59 | 41.79 | 21.64 | 617,942.37 | 813,926.28 | 32.6956362 | -103.4472403 |
| 3,700.00 | 7.49 | 30.89 | 3,697.89 | 51.89 | 27.60 | 617,952.47 | 813,932.24 | 32.6956638 | -103.4472206 |
| 3,801.04 | 9.00 | 31.38 | 3,797.89 | 64.28 | 35.10 | 617,964.87 | 813,939.74 | 32.6956977 | -103.4471960 |
| 3,814.32 | 9.00 | 31.38 | 3,811.00 | 66.06 | 36.18 | 617,966.64 | 813,940.82 | 32.6957026 | -103.4471924 |
| Seven Rivers | | | | | | | | | |
| 3,900.00 | 9.00 | 31.38 | 3,895.63 | 77.50 | 43.16 | 617,978.08 | 813,947.80 | 32.6957339 | -103.4471694 |
| 4,000.00 | 9.00 | 31.38 | 3,994.40 | 90.85 | 51.30 | 617,991.44 | 813,955.94 | 32.6957704 | -103.4471426 |
| 4,100.00 | 9.00 | 31.38 | 4,093.17 | 104.21 | 59.45 | 618,004.79 | 813,964.09 | 32.6958069 | -103.4471157 |

Total Directional

Planning Report - Geographic



| | | | |
|------------------|-------------------------------------|-------------------------------------|---------------------------------|
| Database: | EDM 5000.1 Single User Db | Local Co-ordinate Reference: | Well Norte State Com 602H |
| Company: | Franklin Mountain Energy | TVD Reference: | GE 3855' + KB 30' @ 3885.00usft |
| Project: | Lea County, NM (NAD83) | MD Reference: | GE 3855' + KB 30' @ 3885.00usft |
| Site: | Sec 3-T19S-R35E (Eagle/Norte State) | North Reference: | Grid |
| Well: | Norte State Com 602H | Survey Calculation Method: | Minimum Curvature |
| Wellbore: | OH | | |
| Design: | Plan #1 | | |

| Planned Survey | | | | | | | | | |
|-------------------------|-----------------|-------------|-----------------------|--------------|--------------|---------------------|--------------------|------------|--------------|
| Measured Depth (usft) | Inclination (°) | Azimuth (°) | Vertical Depth (usft) | +N/-S (usft) | +E/-W (usft) | Map Northing (usft) | Map Easting (usft) | Latitude | Longitude |
| 4,200.00 | 9.00 | 31.38 | 4,191.93 | 117.56 | 67.60 | 618,018.15 | 813,972.23 | 32.6958434 | -103.4470889 |
| 4,300.00 | 9.00 | 31.38 | 4,290.70 | 130.92 | 75.74 | 618,031.50 | 813,980.38 | 32.6958800 | -103.4470620 |
| 4,400.00 | 9.00 | 31.38 | 4,389.47 | 144.28 | 83.89 | 618,044.86 | 813,988.52 | 32.6959165 | -103.4470352 |
| 4,500.00 | 9.00 | 31.38 | 4,488.24 | 157.63 | 92.03 | 618,058.21 | 813,996.67 | 32.6959530 | -103.4470084 |
| 4,583.79 | 9.00 | 31.38 | 4,571.00 | 168.82 | 98.86 | 618,069.41 | 814,003.49 | 32.6959836 | -103.4469859 |
| Queen | | | | | | | | | |
| 4,600.00 | 9.00 | 31.38 | 4,587.01 | 170.99 | 100.18 | 618,071.57 | 814,004.81 | 32.6959895 | -103.4469815 |
| 4,700.00 | 9.00 | 31.38 | 4,685.78 | 184.34 | 108.32 | 618,084.93 | 814,012.96 | 32.6960260 | -103.4469547 |
| 4,800.00 | 9.00 | 31.38 | 4,784.55 | 197.70 | 116.47 | 618,098.28 | 814,021.11 | 32.6960625 | -103.4469279 |
| 4,900.00 | 9.00 | 31.38 | 4,883.32 | 211.05 | 124.61 | 618,111.64 | 814,029.25 | 32.6960991 | -103.4469010 |
| 5,000.00 | 9.00 | 31.38 | 4,982.09 | 224.41 | 132.76 | 618,124.99 | 814,037.40 | 32.6961356 | -103.4468742 |
| 5,100.00 | 9.00 | 31.38 | 5,080.85 | 237.76 | 140.90 | 618,138.35 | 814,045.54 | 32.6961721 | -103.4468473 |
| 5,200.00 | 9.00 | 31.38 | 5,179.62 | 251.12 | 149.05 | 618,151.70 | 814,053.69 | 32.6962086 | -103.4468205 |
| 5,300.00 | 9.00 | 31.38 | 5,278.39 | 264.47 | 157.19 | 618,165.06 | 814,061.83 | 32.6962451 | -103.4467937 |
| 5,400.00 | 9.00 | 31.38 | 5,377.16 | 277.83 | 165.34 | 618,178.41 | 814,069.98 | 32.6962817 | -103.4467668 |
| 5,500.00 | 9.00 | 31.38 | 5,475.93 | 291.18 | 173.48 | 618,191.77 | 814,078.12 | 32.6963182 | -103.4467400 |
| 5,600.00 | 9.00 | 31.38 | 5,574.70 | 304.54 | 181.63 | 618,205.12 | 814,086.27 | 32.6963547 | -103.4467132 |
| 5,700.00 | 9.00 | 31.38 | 5,673.47 | 317.89 | 189.77 | 618,218.48 | 814,094.41 | 32.6963912 | -103.4466863 |
| 5,800.00 | 9.00 | 31.38 | 5,772.24 | 331.25 | 197.92 | 618,231.83 | 814,102.56 | 32.6964277 | -103.4466595 |
| 5,900.00 | 9.00 | 31.38 | 5,871.01 | 344.61 | 206.07 | 618,245.19 | 814,110.70 | 32.6964642 | -103.4466326 |
| 6,000.00 | 9.00 | 31.38 | 5,969.77 | 357.96 | 214.21 | 618,258.54 | 814,118.85 | 32.6965008 | -103.4466058 |
| 6,041.74 | 9.00 | 31.38 | 6,011.00 | 363.54 | 217.61 | 618,264.12 | 814,122.25 | 32.6965160 | -103.4465946 |
| Cherry Canyon | | | | | | | | | |
| 6,100.00 | 9.00 | 31.38 | 6,068.54 | 371.32 | 222.36 | 618,271.90 | 814,126.99 | 32.6965373 | -103.4465790 |
| 6,200.00 | 9.00 | 31.38 | 6,167.31 | 384.67 | 230.50 | 618,285.26 | 814,135.14 | 32.6965738 | -103.4465521 |
| 6,300.00 | 9.00 | 31.38 | 6,266.08 | 398.03 | 238.65 | 618,298.61 | 814,143.28 | 32.6966103 | -103.4465253 |
| 6,400.00 | 9.00 | 31.38 | 6,364.85 | 411.38 | 246.79 | 618,311.97 | 814,151.43 | 32.6966468 | -103.4464984 |
| 6,500.00 | 9.00 | 31.38 | 6,463.62 | 424.74 | 254.94 | 618,325.32 | 814,159.58 | 32.6966834 | -103.4464716 |
| 6,600.00 | 9.00 | 31.38 | 6,562.39 | 438.09 | 263.08 | 618,338.68 | 814,167.72 | 32.6967199 | -103.4464448 |
| 6,700.00 | 9.00 | 31.38 | 6,661.16 | 451.45 | 271.23 | 618,352.03 | 814,175.87 | 32.6967564 | -103.4464179 |
| 6,774.23 | 9.00 | 31.38 | 6,734.47 | 461.36 | 277.27 | 618,361.95 | 814,181.91 | 32.6967835 | -103.4463980 |
| 6,800.00 | 8.61 | 31.38 | 6,759.94 | 464.73 | 279.33 | 618,365.31 | 814,183.97 | 32.6967927 | -103.4463912 |
| 6,900.00 | 7.11 | 31.38 | 6,859.00 | 476.41 | 286.45 | 618,376.99 | 814,191.09 | 32.6968246 | -103.4463678 |
| 7,000.00 | 5.61 | 31.38 | 6,958.38 | 485.87 | 292.22 | 618,386.46 | 814,196.86 | 32.6968505 | -103.4463488 |
| 7,100.00 | 4.11 | 31.38 | 7,058.01 | 493.11 | 296.64 | 618,393.69 | 814,201.28 | 32.6968703 | -103.4463342 |
| 7,200.00 | 2.61 | 31.38 | 7,157.84 | 498.12 | 299.69 | 618,398.70 | 814,204.33 | 32.6968840 | -103.4463241 |
| 7,300.00 | 1.11 | 31.38 | 7,257.78 | 500.89 | 301.38 | 618,401.48 | 814,206.02 | 32.6968916 | -103.4463186 |
| 7,374.22 | 0.00 | 359.52 | 7,332.00 | 501.51 | 301.76 | 618,402.09 | 814,206.40 | 32.6968933 | -103.4463173 |
| 7,400.00 | 0.00 | 0.00 | 7,357.78 | 501.51 | 301.76 | 618,402.09 | 814,206.40 | 32.6968933 | -103.4463173 |
| 7,500.00 | 0.00 | 0.00 | 7,457.78 | 501.51 | 301.76 | 618,402.09 | 814,206.40 | 32.6968933 | -103.4463173 |
| 7,509.22 | 0.00 | 0.00 | 7,467.00 | 501.51 | 301.76 | 618,402.09 | 814,206.40 | 32.6968933 | -103.4463173 |
| Bone Spring Lime | | | | | | | | | |
| 7,600.00 | 0.00 | 0.00 | 7,557.78 | 501.51 | 301.76 | 618,402.09 | 814,206.40 | 32.6968933 | -103.4463173 |
| 7,700.00 | 0.00 | 0.00 | 7,657.78 | 501.51 | 301.76 | 618,402.09 | 814,206.40 | 32.6968933 | -103.4463173 |
| 7,800.00 | 0.00 | 0.00 | 7,757.78 | 501.51 | 301.76 | 618,402.09 | 814,206.40 | 32.6968933 | -103.4463173 |
| 7,900.00 | 0.00 | 0.00 | 7,857.78 | 501.51 | 301.76 | 618,402.09 | 814,206.40 | 32.6968933 | -103.4463173 |
| 8,000.00 | 0.00 | 0.00 | 7,957.78 | 501.51 | 301.76 | 618,402.09 | 814,206.40 | 32.6968933 | -103.4463173 |
| 8,100.00 | 0.00 | 0.00 | 8,057.78 | 501.51 | 301.76 | 618,402.09 | 814,206.40 | 32.6968933 | -103.4463173 |
| 8,200.00 | 0.00 | 0.00 | 8,157.78 | 501.51 | 301.76 | 618,402.09 | 814,206.40 | 32.6968933 | -103.4463173 |
| 8,300.00 | 0.00 | 0.00 | 8,257.78 | 501.51 | 301.76 | 618,402.09 | 814,206.40 | 32.6968933 | -103.4463173 |
| 8,400.00 | 0.00 | 0.00 | 8,357.78 | 501.51 | 301.76 | 618,402.09 | 814,206.40 | 32.6968933 | -103.4463173 |
| 8,500.00 | 0.00 | 0.00 | 8,457.78 | 501.51 | 301.76 | 618,402.09 | 814,206.40 | 32.6968933 | -103.4463173 |
| 8,600.00 | 0.00 | 0.00 | 8,557.78 | 501.51 | 301.76 | 618,402.09 | 814,206.40 | 32.6968933 | -103.4463173 |
| 8,700.00 | 0.00 | 0.00 | 8,657.78 | 501.51 | 301.76 | 618,402.09 | 814,206.40 | 32.6968933 | -103.4463173 |

Total Directional Planning Report - Geographic



| | | | |
|------------------|-------------------------------------|-------------------------------------|---------------------------------|
| Database: | EDM 5000.1 Single User Db | Local Co-ordinate Reference: | Well Norte State Com 602H |
| Company: | Franklin Mountain Energy | TVD Reference: | GE 3855' + KB 30' @ 3885.00usft |
| Project: | Lea County, NM (NAD83) | MD Reference: | GE 3855' + KB 30' @ 3885.00usft |
| Site: | Sec 3-T19S-R35E (Eagle/Norte State) | North Reference: | Grid |
| Well: | Norte State Com 602H | Survey Calculation Method: | Minimum Curvature |
| Wellbore: | OH | | |
| Design: | Plan #1 | | |

| Planned Survey | | | | | | | | | | |
|-------------------------------|-----------------|-------------|-----------------------|--------------|--------------|---------------------|--------------------|------------|--------------|--|
| Measured Depth (usft) | Inclination (°) | Azimuth (°) | Vertical Depth (usft) | +N/-S (usft) | +E/-W (usft) | Map Northing (usft) | Map Easting (usft) | Latitude | Longitude | |
| 8,800.00 | 0.00 | 0.00 | 8,757.78 | 501.51 | 301.76 | 618,402.09 | 814,206.40 | 32.6968933 | -103.4463173 | |
| 8,900.00 | 0.00 | 0.00 | 8,857.78 | 501.51 | 301.76 | 618,402.09 | 814,206.40 | 32.6968933 | -103.4463173 | |
| 9,000.00 | 0.00 | 0.00 | 8,957.78 | 501.51 | 301.76 | 618,402.09 | 814,206.40 | 32.6968933 | -103.4463173 | |
| 9,078.22 | 0.00 | 0.00 | 9,036.00 | 501.51 | 301.76 | 618,402.09 | 814,206.40 | 32.6968933 | -103.4463173 | |
| First Bone Spring Sand | | | | | | | | | | |
| 9,100.00 | 0.00 | 0.00 | 9,057.78 | 501.51 | 301.76 | 618,402.09 | 814,206.40 | 32.6968933 | -103.4463173 | |
| 9,200.00 | 0.00 | 0.00 | 9,157.78 | 501.51 | 301.76 | 618,402.09 | 814,206.40 | 32.6968933 | -103.4463173 | |
| 9,300.00 | 0.00 | 0.00 | 9,257.78 | 501.51 | 301.76 | 618,402.09 | 814,206.40 | 32.6968933 | -103.4463173 | |
| 9,343.22 | 0.00 | 0.00 | 9,301.00 | 501.51 | 301.76 | 618,402.09 | 814,206.40 | 32.6968933 | -103.4463173 | |
| Second Bone Spring Carbonates | | | | | | | | | | |
| 9,400.00 | 0.00 | 0.00 | 9,357.78 | 501.51 | 301.76 | 618,402.09 | 814,206.40 | 32.6968933 | -103.4463173 | |
| 9,500.00 | 0.00 | 0.00 | 9,457.78 | 501.51 | 301.76 | 618,402.09 | 814,206.40 | 32.6968933 | -103.4463173 | |
| 9,506.22 | 0.00 | 0.00 | 9,464.00 | 501.51 | 301.76 | 618,402.09 | 814,206.40 | 32.6968933 | -103.4463173 | |
| Second Bone Spring Sand | | | | | | | | | | |
| 9,517.26 | 0.00 | 359.52 | 9,475.04 | 501.51 | 301.76 | 618,402.09 | 814,206.40 | 32.6968933 | -103.4463173 | |
| KOP (Norte State Com 602H) | | | | | | | | | | |
| 9,550.00 | 3.27 | 359.43 | 9,507.76 | 502.45 | 301.75 | 618,403.03 | 814,206.39 | 32.6968958 | -103.4463173 | |
| 9,600.00 | 8.27 | 359.43 | 9,557.49 | 507.47 | 301.70 | 618,408.06 | 814,206.34 | 32.6969097 | -103.4463174 | |
| 9,650.00 | 13.27 | 359.43 | 9,606.59 | 516.82 | 301.61 | 618,417.40 | 814,206.25 | 32.6969353 | -103.4463174 | |
| 9,700.00 | 18.27 | 359.43 | 9,654.70 | 530.40 | 301.47 | 618,430.99 | 814,206.11 | 32.6969727 | -103.4463175 | |
| 9,750.00 | 23.27 | 359.43 | 9,701.43 | 548.13 | 301.30 | 618,448.71 | 814,205.94 | 32.6970214 | -103.4463176 | |
| 9,800.00 | 28.27 | 359.43 | 9,746.44 | 569.86 | 301.09 | 618,470.45 | 814,205.72 | 32.6970812 | -103.4463177 | |
| 9,850.00 | 33.27 | 359.43 | 9,789.39 | 595.44 | 300.83 | 618,496.02 | 814,205.47 | 32.6971514 | -103.4463178 | |
| 9,900.00 | 38.27 | 359.43 | 9,829.94 | 624.66 | 300.54 | 618,525.24 | 814,205.18 | 32.6972318 | -103.4463179 | |
| 9,950.00 | 43.27 | 359.43 | 9,867.79 | 657.30 | 300.22 | 618,557.88 | 814,204.86 | 32.6973215 | -103.4463181 | |
| 9,988.62 | 47.14 | 359.43 | 9,895.00 | 684.70 | 299.95 | 618,585.28 | 814,204.59 | 32.6973968 | -103.4463182 | |
| Third Bone Springs Carbonates | | | | | | | | | | |
| 10,000.00 | 48.27 | 359.43 | 9,902.66 | 693.11 | 299.87 | 618,593.70 | 814,204.51 | 32.6974199 | -103.4463183 | |
| 10,049.57 | 53.23 | 359.43 | 9,934.01 | 731.49 | 299.49 | 618,632.07 | 814,204.13 | 32.6975254 | -103.4463185 | |
| FTP (Norte State Com 602H) | | | | | | | | | | |
| 10,050.00 | 53.27 | 359.43 | 9,934.27 | 731.83 | 299.49 | 618,632.42 | 814,204.12 | 32.6975263 | -103.4463185 | |
| 10,100.00 | 58.27 | 359.43 | 9,962.38 | 773.16 | 299.08 | 618,673.74 | 814,203.72 | 32.6976399 | -103.4463187 | |
| 10,122.84 | 60.56 | 359.43 | 9,974.00 | 792.82 | 298.88 | 618,693.40 | 814,203.52 | 32.6976940 | -103.4463188 | |
| Third Bone Springs Sand | | | | | | | | | | |
| 10,150.00 | 63.27 | 359.43 | 9,986.79 | 816.78 | 298.65 | 618,717.36 | 814,203.29 | 32.6977598 | -103.4463189 | |
| 10,200.00 | 68.27 | 359.43 | 10,007.30 | 862.36 | 298.20 | 618,762.94 | 814,202.84 | 32.6978851 | -103.4463191 | |
| 10,250.00 | 73.27 | 359.43 | 10,023.76 | 909.55 | 297.73 | 618,810.14 | 814,202.37 | 32.6980148 | -103.4463193 | |
| 10,300.00 | 78.27 | 359.43 | 10,036.04 | 958.00 | 297.25 | 618,858.58 | 814,201.89 | 32.6981480 | -103.4463196 | |
| 10,350.00 | 83.27 | 359.43 | 10,044.05 | 1,007.34 | 296.77 | 618,907.92 | 814,201.40 | 32.6982836 | -103.4463198 | |
| 10,400.00 | 88.27 | 359.43 | 10,047.74 | 1,057.18 | 296.27 | 618,957.77 | 814,200.91 | 32.6984206 | -103.4463201 | |
| 10,417.26 | 90.00 | 359.43 | 10,048.00 | 1,074.44 | 296.10 | 618,975.02 | 814,200.74 | 32.6984680 | -103.4463201 | |
| HZ Target at Landing | | | | | | | | | | |
| 10,500.00 | 90.00 | 359.43 | 10,048.00 | 1,157.17 | 295.29 | 619,057.76 | 814,199.92 | 32.6986954 | -103.4463206 | |
| 10,600.00 | 90.00 | 359.43 | 10,048.00 | 1,257.17 | 294.30 | 619,157.75 | 814,198.94 | 32.6989703 | -103.4463210 | |
| 10,700.00 | 90.00 | 359.43 | 10,048.00 | 1,357.16 | 293.31 | 619,257.75 | 814,197.95 | 32.6992451 | -103.4463215 | |
| 10,800.00 | 90.00 | 359.43 | 10,048.00 | 1,457.16 | 292.32 | 619,357.74 | 814,196.96 | 32.6995200 | -103.4463220 | |
| 10,900.00 | 90.00 | 359.43 | 10,048.00 | 1,557.15 | 291.34 | 619,457.74 | 814,195.97 | 32.6997948 | -103.4463225 | |
| 11,000.00 | 90.00 | 359.43 | 10,048.00 | 1,657.15 | 290.35 | 619,557.73 | 814,194.99 | 32.7000697 | -103.4463230 | |
| 11,100.00 | 90.00 | 359.43 | 10,048.00 | 1,757.14 | 289.36 | 619,657.73 | 814,194.00 | 32.7003445 | -103.4463235 | |
| 11,200.00 | 90.00 | 359.43 | 10,048.00 | 1,857.14 | 288.37 | 619,757.72 | 814,193.01 | 32.7006194 | -103.4463240 | |
| 11,300.00 | 90.00 | 359.43 | 10,048.00 | 1,957.13 | 287.39 | 619,857.72 | 814,192.03 | 32.7008942 | -103.4463245 | |
| 11,400.00 | 90.00 | 359.43 | 10,048.00 | 2,057.13 | 286.40 | 619,957.71 | 814,191.04 | 32.7011690 | -103.4463250 | |
| 11,500.00 | 90.00 | 359.43 | 10,048.00 | 2,157.13 | 285.41 | 620,057.71 | 814,190.05 | 32.7014439 | -103.4463255 | |
| 11,600.00 | 90.00 | 359.43 | 10,048.00 | 2,257.12 | 284.43 | 620,157.70 | 814,189.06 | 32.7017187 | -103.4463259 | |

Total Directional

Planning Report - Geographic



| | | | |
|------------------|-------------------------------------|-------------------------------------|---------------------------------|
| Database: | EDM 5000.1 Single User Db | Local Co-ordinate Reference: | Well Norte State Com 602H |
| Company: | Franklin Mountain Energy | TVD Reference: | GE 3855' + KB 30' @ 3885.00usft |
| Project: | Lea County, NM (NAD83) | MD Reference: | GE 3855' + KB 30' @ 3885.00usft |
| Site: | Sec 3-T19S-R35E (Eagle/Norte State) | North Reference: | Grid |
| Well: | Norte State Com 602H | Survey Calculation Method: | Minimum Curvature |
| Wellbore: | OH | | |
| Design: | Plan #1 | | |

| Planned Survey | | | | | | | | | | |
|-----------------------|-----------------|-------------|-----------------------|--------------|--------------|---------------------|--------------------|------------|--------------|--|
| Measured Depth (usft) | Inclination (°) | Azimuth (°) | Vertical Depth (usft) | +N/-S (usft) | +E/-W (usft) | Map Northing (usft) | Map Easting (usft) | Latitude | Longitude | |
| 11,700.00 | 90.00 | 359.43 | 10,048.00 | 2,357.12 | 283.44 | 620,257.70 | 814,188.08 | 32.7019936 | -103.4463264 | |
| 11,800.00 | 90.00 | 359.43 | 10,048.00 | 2,457.11 | 282.45 | 620,357.69 | 814,187.09 | 32.7022684 | -103.4463269 | |
| 11,900.00 | 90.00 | 359.43 | 10,048.00 | 2,557.11 | 281.46 | 620,457.69 | 814,186.10 | 32.7025433 | -103.4463274 | |
| 12,000.00 | 90.00 | 359.43 | 10,048.00 | 2,657.10 | 280.48 | 620,557.68 | 814,185.11 | 32.7028181 | -103.4463279 | |
| 12,100.00 | 90.00 | 359.43 | 10,048.00 | 2,757.10 | 279.49 | 620,657.68 | 814,184.13 | 32.7030930 | -103.4463284 | |
| 12,200.00 | 90.00 | 359.43 | 10,048.00 | 2,857.09 | 278.50 | 620,757.67 | 814,183.14 | 32.7033678 | -103.4463289 | |
| 12,300.00 | 90.00 | 359.43 | 10,048.00 | 2,957.09 | 277.51 | 620,857.67 | 814,182.15 | 32.7036427 | -103.4463294 | |
| 12,400.00 | 90.00 | 359.43 | 10,048.00 | 3,057.08 | 276.53 | 620,957.67 | 814,181.16 | 32.7039175 | -103.4463299 | |
| 12,500.00 | 90.00 | 359.43 | 10,048.00 | 3,157.08 | 275.54 | 621,057.66 | 814,180.18 | 32.7041924 | -103.4463304 | |
| 12,600.00 | 90.00 | 359.43 | 10,048.00 | 3,257.07 | 274.55 | 621,157.66 | 814,179.19 | 32.7044672 | -103.4463309 | |
| 12,700.00 | 90.00 | 359.43 | 10,048.00 | 3,357.07 | 273.56 | 621,257.65 | 814,178.20 | 32.7047420 | -103.4463313 | |
| 12,800.00 | 90.00 | 359.43 | 10,048.00 | 3,457.06 | 272.58 | 621,357.65 | 814,177.22 | 32.7050169 | -103.4463318 | |
| 12,900.00 | 90.00 | 359.43 | 10,048.00 | 3,557.06 | 271.59 | 621,457.64 | 814,176.23 | 32.7052917 | -103.4463323 | |
| 13,000.00 | 90.00 | 359.43 | 10,048.00 | 3,657.05 | 270.60 | 621,557.64 | 814,175.24 | 32.7055666 | -103.4463328 | |
| 13,100.00 | 90.00 | 359.43 | 10,048.00 | 3,757.05 | 269.61 | 621,657.63 | 814,174.25 | 32.7058414 | -103.4463333 | |
| 13,200.00 | 90.00 | 359.43 | 10,048.00 | 3,857.04 | 268.63 | 621,757.63 | 814,173.27 | 32.7061163 | -103.4463338 | |
| 13,300.00 | 90.00 | 359.43 | 10,048.00 | 3,957.04 | 267.64 | 621,857.62 | 814,172.28 | 32.7063911 | -103.4463343 | |
| 13,400.00 | 90.00 | 359.43 | 10,048.00 | 4,057.03 | 266.65 | 621,957.62 | 814,171.29 | 32.7066660 | -103.4463348 | |
| 13,500.00 | 90.00 | 359.43 | 10,048.00 | 4,157.03 | 265.67 | 622,057.61 | 814,170.30 | 32.7069408 | -103.4463353 | |
| 13,600.00 | 90.00 | 359.43 | 10,048.00 | 4,257.02 | 264.68 | 622,157.61 | 814,169.32 | 32.7072157 | -103.4463358 | |
| 13,700.00 | 90.00 | 359.43 | 10,048.00 | 4,357.02 | 263.69 | 622,257.60 | 814,168.33 | 32.7074905 | -103.4463362 | |
| 13,800.00 | 90.00 | 359.43 | 10,048.00 | 4,457.01 | 262.70 | 622,357.60 | 814,167.34 | 32.7077653 | -103.4463367 | |
| 13,900.00 | 90.00 | 359.43 | 10,048.00 | 4,557.01 | 261.72 | 622,457.59 | 814,166.35 | 32.7080402 | -103.4463372 | |
| 14,000.00 | 90.00 | 359.43 | 10,048.00 | 4,657.00 | 260.73 | 622,557.59 | 814,165.37 | 32.7083150 | -103.4463377 | |
| 14,100.00 | 90.00 | 359.43 | 10,048.00 | 4,757.00 | 259.74 | 622,657.58 | 814,164.38 | 32.7085899 | -103.4463382 | |
| 14,200.00 | 90.00 | 359.43 | 10,048.00 | 4,856.99 | 258.75 | 622,757.58 | 814,163.39 | 32.7088647 | -103.4463387 | |
| 14,300.00 | 90.00 | 359.43 | 10,048.00 | 4,956.99 | 257.77 | 622,857.57 | 814,162.40 | 32.7091396 | -103.4463392 | |
| 14,400.00 | 90.00 | 359.43 | 10,048.00 | 5,056.98 | 256.78 | 622,957.57 | 814,161.42 | 32.7094144 | -103.4463397 | |
| 14,500.00 | 90.00 | 359.43 | 10,048.00 | 5,156.98 | 255.79 | 623,057.56 | 814,160.43 | 32.7096893 | -103.4463402 | |
| 14,600.00 | 90.00 | 359.43 | 10,048.00 | 5,256.97 | 254.80 | 623,157.56 | 814,159.44 | 32.7099641 | -103.4463407 | |
| 14,700.00 | 90.00 | 359.43 | 10,048.00 | 5,356.97 | 253.82 | 623,257.55 | 814,158.46 | 32.7102390 | -103.4463411 | |
| 14,800.00 | 90.00 | 359.43 | 10,048.00 | 5,456.96 | 252.83 | 623,357.55 | 814,157.47 | 32.7105138 | -103.4463416 | |
| 14,900.00 | 90.00 | 359.43 | 10,048.00 | 5,556.96 | 251.84 | 623,457.54 | 814,156.48 | 32.7107887 | -103.4463421 | |
| 15,000.00 | 90.00 | 359.43 | 10,048.00 | 5,656.95 | 250.86 | 623,557.54 | 814,155.49 | 32.7110635 | -103.4463426 | |
| 15,100.00 | 90.00 | 359.43 | 10,048.00 | 5,756.95 | 249.87 | 623,657.53 | 814,154.51 | 32.7113383 | -103.4463431 | |
| 15,200.00 | 90.00 | 359.43 | 10,048.00 | 5,856.94 | 248.88 | 623,757.53 | 814,153.52 | 32.7116132 | -103.4463436 | |
| 15,300.00 | 90.00 | 359.43 | 10,048.00 | 5,956.94 | 247.89 | 623,857.52 | 814,152.53 | 32.7118880 | -103.4463441 | |
| 15,400.00 | 90.00 | 359.43 | 10,048.00 | 6,056.94 | 246.91 | 623,957.52 | 814,151.54 | 32.7121629 | -103.4463446 | |
| 15,500.00 | 90.00 | 359.43 | 10,048.00 | 6,156.93 | 245.92 | 624,057.51 | 814,150.56 | 32.7124377 | -103.4463451 | |
| 15,600.00 | 90.00 | 359.43 | 10,048.00 | 6,256.93 | 244.93 | 624,157.51 | 814,149.57 | 32.7127126 | -103.4463456 | |
| 15,700.00 | 90.00 | 359.43 | 10,048.00 | 6,356.92 | 243.94 | 624,257.50 | 814,148.58 | 32.7129874 | -103.4463460 | |
| 15,800.00 | 90.00 | 359.43 | 10,048.00 | 6,456.92 | 242.96 | 624,357.50 | 814,147.59 | 32.7132623 | -103.4463465 | |
| 15,900.00 | 90.00 | 359.43 | 10,048.00 | 6,556.91 | 241.97 | 624,457.49 | 814,146.61 | 32.7135371 | -103.4463470 | |
| 16,000.00 | 90.00 | 359.43 | 10,048.00 | 6,656.91 | 240.98 | 624,557.49 | 814,145.62 | 32.7138120 | -103.4463475 | |
| 16,100.00 | 90.00 | 359.43 | 10,048.00 | 6,756.90 | 239.99 | 624,657.48 | 814,144.63 | 32.7140868 | -103.4463480 | |
| 16,200.00 | 90.00 | 359.43 | 10,048.00 | 6,856.90 | 239.01 | 624,757.48 | 814,143.65 | 32.7143616 | -103.4463485 | |
| 16,300.00 | 90.00 | 359.43 | 10,048.00 | 6,956.89 | 238.02 | 624,857.48 | 814,142.66 | 32.7146365 | -103.4463490 | |
| 16,400.00 | 90.00 | 359.43 | 10,048.00 | 7,056.89 | 237.03 | 624,957.47 | 814,141.67 | 32.7149113 | -103.4463495 | |
| 16,500.00 | 90.00 | 359.43 | 10,048.00 | 7,156.88 | 236.04 | 625,057.47 | 814,140.68 | 32.7151862 | -103.4463500 | |
| 16,600.00 | 90.00 | 359.43 | 10,048.00 | 7,256.88 | 235.06 | 625,157.46 | 814,139.70 | 32.7154610 | -103.4463505 | |
| 16,700.00 | 90.00 | 359.43 | 10,048.00 | 7,356.87 | 234.07 | 625,257.46 | 814,138.71 | 32.7157359 | -103.4463509 | |
| 16,800.00 | 90.00 | 359.43 | 10,048.00 | 7,456.87 | 233.08 | 625,357.45 | 814,137.72 | 32.7160107 | -103.4463514 | |
| 16,900.00 | 90.00 | 359.43 | 10,048.00 | 7,556.86 | 232.10 | 625,457.45 | 814,136.73 | 32.7162856 | -103.4463519 | |
| 17,000.00 | 90.00 | 359.43 | 10,048.00 | 7,656.86 | 231.11 | 625,557.44 | 814,135.75 | 32.7165604 | -103.4463524 | |
| 17,100.00 | 90.00 | 359.43 | 10,048.00 | 7,756.85 | 230.12 | 625,657.44 | 814,134.76 | 32.7168353 | -103.4463529 | |

Total Directional

Planning Report - Geographic



| | | | |
|------------------|-------------------------------------|-------------------------------------|---------------------------------|
| Database: | EDM 5000.1 Single User Db | Local Co-ordinate Reference: | Well Norte State Com 602H |
| Company: | Franklin Mountain Energy | TVD Reference: | GE 3855' + KB 30' @ 3885.00usft |
| Project: | Lea County, NM (NAD83) | MD Reference: | GE 3855' + KB 30' @ 3885.00usft |
| Site: | Sec 3-T19S-R35E (Eagle/Norte State) | North Reference: | Grid |
| Well: | Norte State Com 602H | Survey Calculation Method: | Minimum Curvature |
| Wellbore: | OH | | |
| Design: | Plan #1 | | |

| Planned Survey | | | | | | | | | | |
|-----------------------------|-----------------|-------------|-----------------------|--------------|--------------|---------------------|--------------------|------------|--------------|--|
| Measured Depth (usft) | Inclination (°) | Azimuth (°) | Vertical Depth (usft) | +N/-S (usft) | +E/-W (usft) | Map Northing (usft) | Map Easting (usft) | Latitude | Longitude | |
| 17,200.00 | 90.00 | 359.43 | 10,048.00 | 7,856.85 | 229.13 | 625,757.43 | 814,133.77 | 32.7171101 | -103.4463534 | |
| 17,300.00 | 90.00 | 359.43 | 10,048.00 | 7,956.84 | 228.15 | 625,857.43 | 814,132.78 | 32.7173849 | -103.4463539 | |
| 17,400.00 | 90.00 | 359.43 | 10,048.00 | 8,056.84 | 227.16 | 625,957.42 | 814,131.80 | 32.7176598 | -103.4463544 | |
| 17,500.00 | 90.00 | 359.43 | 10,048.00 | 8,156.83 | 226.17 | 626,057.42 | 814,130.81 | 32.7179346 | -103.4463549 | |
| 17,600.00 | 90.00 | 359.43 | 10,048.00 | 8,256.83 | 225.18 | 626,157.41 | 814,129.82 | 32.7182095 | -103.4463554 | |
| 17,700.00 | 90.00 | 359.43 | 10,048.00 | 8,356.82 | 224.20 | 626,257.41 | 814,128.83 | 32.7184843 | -103.4463558 | |
| 17,800.00 | 90.00 | 359.43 | 10,048.00 | 8,456.82 | 223.21 | 626,357.40 | 814,127.85 | 32.7187592 | -103.4463563 | |
| 17,900.00 | 90.00 | 359.43 | 10,048.00 | 8,556.81 | 222.22 | 626,457.40 | 814,126.86 | 32.7190340 | -103.4463568 | |
| 18,000.00 | 90.00 | 359.43 | 10,048.00 | 8,656.81 | 221.23 | 626,557.39 | 814,125.87 | 32.7193089 | -103.4463573 | |
| 18,100.00 | 90.00 | 359.43 | 10,048.00 | 8,756.80 | 220.25 | 626,657.39 | 814,124.89 | 32.7195837 | -103.4463578 | |
| 18,200.00 | 90.00 | 359.43 | 10,048.00 | 8,856.80 | 219.26 | 626,757.38 | 814,123.90 | 32.7198586 | -103.4463583 | |
| 18,300.00 | 90.00 | 359.43 | 10,048.00 | 8,956.79 | 218.27 | 626,857.38 | 814,122.91 | 32.7201334 | -103.4463588 | |
| 18,400.00 | 90.00 | 359.43 | 10,048.00 | 9,056.79 | 217.29 | 626,957.37 | 814,121.92 | 32.7204082 | -103.4463593 | |
| 18,500.00 | 90.00 | 359.43 | 10,048.00 | 9,156.78 | 216.30 | 627,057.37 | 814,120.94 | 32.7206831 | -103.4463598 | |
| 18,600.00 | 90.00 | 359.43 | 10,048.00 | 9,256.78 | 215.31 | 627,157.36 | 814,119.95 | 32.7209579 | -103.4463602 | |
| 18,700.00 | 90.00 | 359.43 | 10,048.00 | 9,356.77 | 214.32 | 627,257.36 | 814,118.96 | 32.7212328 | -103.4463607 | |
| 18,800.00 | 90.00 | 359.43 | 10,048.00 | 9,456.77 | 213.34 | 627,357.35 | 814,117.97 | 32.7215076 | -103.4463612 | |
| 18,900.00 | 90.00 | 359.43 | 10,048.00 | 9,556.76 | 212.35 | 627,457.35 | 814,116.99 | 32.7217825 | -103.4463617 | |
| 19,000.00 | 90.00 | 359.43 | 10,048.00 | 9,656.76 | 211.36 | 627,557.34 | 814,116.00 | 32.7220573 | -103.4463622 | |
| 19,100.00 | 90.00 | 359.43 | 10,048.00 | 9,756.75 | 210.37 | 627,657.34 | 814,115.01 | 32.7223322 | -103.4463627 | |
| 19,200.00 | 90.00 | 359.43 | 10,048.00 | 9,856.75 | 209.39 | 627,757.33 | 814,114.02 | 32.7226070 | -103.4463632 | |
| 19,300.00 | 90.00 | 359.43 | 10,048.00 | 9,956.75 | 208.40 | 627,857.33 | 814,113.04 | 32.7228818 | -103.4463637 | |
| 19,400.00 | 90.00 | 359.43 | 10,048.00 | 10,056.74 | 207.41 | 627,957.32 | 814,112.05 | 32.7231567 | -103.4463642 | |
| 19,500.00 | 90.00 | 359.43 | 10,048.00 | 10,156.74 | 206.42 | 628,057.32 | 814,111.06 | 32.7234315 | -103.4463647 | |
| 19,600.00 | 90.00 | 359.43 | 10,048.00 | 10,256.73 | 205.44 | 628,157.31 | 814,110.08 | 32.7237064 | -103.4463651 | |
| 19,700.00 | 90.00 | 359.43 | 10,048.00 | 10,356.73 | 204.45 | 628,257.31 | 814,109.09 | 32.7239812 | -103.4463656 | |
| 19,800.00 | 90.00 | 359.43 | 10,048.00 | 10,456.72 | 203.46 | 628,357.30 | 814,108.10 | 32.7242561 | -103.4463661 | |
| 19,900.00 | 90.00 | 359.43 | 10,048.00 | 10,556.72 | 202.47 | 628,457.30 | 814,107.11 | 32.7245309 | -103.4463666 | |
| 20,000.00 | 90.00 | 359.43 | 10,048.00 | 10,656.71 | 201.49 | 628,557.29 | 814,106.13 | 32.7248058 | -103.4463671 | |
| 20,054.70 | 90.00 | 359.43 | 10,048.00 | 10,711.41 | 200.95 | 628,611.99 | 814,105.59 | 32.7249561 | -103.4463674 | |
| LTP (Norte State Com 602H) | | | | | | | | | | |
| 20,100.00 | 90.00 | 359.43 | 10,048.00 | 10,756.71 | 200.50 | 628,657.29 | 814,105.14 | 32.7250806 | -103.4463676 | |
| 20,200.00 | 90.00 | 359.43 | 10,048.00 | 10,856.70 | 199.51 | 628,757.29 | 814,104.15 | 32.7253555 | -103.4463681 | |
| 20,234.72 | 90.00 | 359.43 | 10,048.00 | 10,891.42 | 199.17 | 628,792.00 | 814,103.81 | 32.7254509 | -103.4463682 | |
| PBHL (Norte State Com 602H) | | | | | | | | | | |

Total Directional Planning Report - Geographic



| | | | |
|------------------|-------------------------------------|-------------------------------------|---------------------------------|
| Database: | EDM 5000.1 Single User Db | Local Co-ordinate Reference: | Well Norte State Com 602H |
| Company: | Franklin Mountain Energy | TVD Reference: | GE 3855' + KB 30' @ 3885.00usft |
| Project: | Lea County, NM (NAD83) | MD Reference: | GE 3855' + KB 30' @ 3885.00usft |
| Site: | Sec 3-T19S-R35E (Eagle/Norte State) | North Reference: | Grid |
| Well: | Norte State Com 602H | Survey Calculation Method: | Minimum Curvature |
| Wellbore: | OH | | |
| Design: | Plan #1 | | |

| Design Targets | | | | | | | | | | |
|---|-----------|----------|-----------|-----------|--------|------------|------------|------------|--------------|--|
| Target Name | | | | | | | | | | |
| - hit/miss target | Dip Angle | Dip Dir. | TVD | +N/-S | +E/-W | Northing | Easting | | | |
| - Shape | (°) | (°) | (usft) | (usft) | (usft) | (usft) | (usft) | Latitude | Longitude | |
| KOP (Norte State Cor - plan hits target center - Point | 0.00 | 359.52 | 9,475.04 | 501.51 | 301.76 | 618,402.09 | 814,206.40 | 32.6968933 | -103.4463173 | |
| FTP (Norte State Cor - plan misses target center by 0.01usft at 10049.57usft MD (9934.01 TVD, 731.49 N, 299.49 E) - Point | 0.00 | 0.00 | 9,934.01 | 731.49 | 299.48 | 618,632.08 | 814,204.12 | 32.6975254 | -103.4463185 | |
| PBHL (Norte State Cc - plan hits target center - Point | 0.00 | 359.52 | 10,048.00 | 10,891.42 | 199.17 | 628,792.00 | 814,103.81 | 32.7254509 | -103.4463682 | |
| LTP (Norte State Com - plan hits target center - Point | 0.00 | 0.00 | 10,048.00 | 10,711.41 | 200.95 | 628,611.99 | 814,105.59 | 32.7249561 | -103.4463674 | |

| Formations | | | | | | |
|-----------------------|-----------------------|-------------------------------|-----------|---------|-------------------|--|
| Measured Depth (usft) | Vertical Depth (usft) | Name | Lithology | Dip (°) | Dip Direction (°) | |
| 30.00 | 30.00 | Cenozoic Alluvium (surface) | | 0.0000 | 359.43 | |
| 1,810.00 | 1,810.00 | Rustler | | 0.0000 | 359.43 | |
| 2,045.00 | 2,045.00 | Salado | | 0.0000 | 359.43 | |
| 2,963.18 | 2,963.00 | Base Salt | | 0.0000 | 359.43 | |
| 3,363.73 | 3,363.00 | Yates | | 0.0000 | 359.43 | |
| 3,814.32 | 3,811.00 | Seven Rivers | | 0.0000 | 359.43 | |
| 4,583.79 | 4,571.00 | Queen | | 0.0000 | 359.43 | |
| 6,041.74 | 6,011.00 | Cherry Canyon | | 0.0000 | 359.43 | |
| 7,509.22 | 7,467.00 | Bone Spring Lime | | 0.0000 | 359.43 | |
| 9,078.22 | 9,036.00 | First Bone Spring Sand | | 0.0000 | 359.43 | |
| 9,343.22 | 9,301.00 | Second Bone Spring Carbonates | | 0.0000 | 359.43 | |
| 9,506.22 | 9,464.00 | Second Bone Spring Sand | | 0.0000 | 359.43 | |
| 9,988.62 | 9,895.00 | Third Bone Springs Carbonates | | 0.0000 | 359.43 | |
| 10,122.84 | 9,974.00 | Third Bone Springs Sand | | 0.0000 | 359.43 | |
| 10,417.26 | 10,048.00 | HZ Target at Landing | | 0.0000 | 359.43 | |

State of New Mexico
Energy, Minerals and Natural Resources Department

Submit Electronically
Via E-permitting

Oil Conservation Division
1220 South St. Francis Dr.
Santa Fe, NM 87505

NATURAL GAS MANAGEMENT PLAN

This Natural Gas Management Plan must be submitted with each Application for Permit to Drill (APD) for a new or recompleted well.

Section 1 – Plan Description

Effective May 25, 2021

I. Operator: Franklin Mountain Energy 3, LLC **OGRID:** 331595 **Date:** 2/28/2023

II. Type: ☒ Original ☐ Amendment due to ☐ 19.15.27.9.D(6)(a) NMAC ☐ 19.15.27.9.D(6)(b) NMAC ☐ Other.

If Other, please describe: _____

III. Well(s): Provide the following information for each new or recompleted well or set of wells proposed to be drilled or proposed to be recompleted from a single well pad or connected to a central delivery point.

| Well Name | API | ULSTR | Footages | Anticipated Oil BBL/D | Anticipated Gas MCF/D | Anticipated Produced Water BBL/D |
|------------------------|-----|-------|----------|-----------------------|-----------------------|----------------------------------|
| See Attached Well List | | | | | | |
| | | | | | | |

IV. Central Delivery Point Name: Eagle/Norte CTB [See 19.15.27.9(D)(1) NMAC]

V. Anticipated Schedule: Provide the following information for each new or recompleted well or set of wells proposed to be drilled or proposed to be recompleted from a single well pad or connected to a central delivery point.

| Well Name | API | Spud Date | TD Reached Date | Completion Commencement Date | Initial Flow Back Date | First Production Date |
|------------------------|-----|-----------|-----------------|------------------------------|------------------------|-----------------------|
| See Attached Well List | | | | | | |
| | | | | | | |

VI. Separation Equipment: ☒ Attach a complete description of how Operator will size separation equipment to optimize gas capture.

VII. Operational Practices: ☒ Attach a complete description of the actions Operator will take to comply with the requirements of Subsection A through F of 19.15.27.8 NMAC.

VIII. Best Management Practices: ☒ Attach a complete description of Operator's best management practices to minimize venting during active and planned maintenance.

Section 2 – Enhanced Plan

EFFECTIVE APRIL 1, 2022

Beginning April 1, 2022, an operator that is not in compliance with its statewide natural gas capture requirement for the applicable reporting area must complete this section.

☒ Operator certifies that it is not required to complete this section because Operator is in compliance with its statewide natural gas capture requirement for the applicable reporting area.

IX. Anticipated Natural Gas Production:

| Well | API | Anticipated Average Natural Gas Rate MCF/D | Anticipated Volume of Natural Gas for the First Year MCF |
|------|-----|--|--|
| | | | |
| | | | |

X. Natural Gas Gathering System (NGGS):

| Operator | System | ULSTR of Tie-in | Anticipated Gathering Start Date | Available Maximum Daily Capacity of System Segment Tie-in |
|----------|--------|-----------------|----------------------------------|---|
| | | | | |
| | | | | |

XI. Map. ☒ Attach an accurate and legible map depicting the location of the well(s), the anticipated pipeline route(s) connecting the production operations to the existing or planned interconnect of the natural gas gathering system(s), and the maximum daily capacity of the segment or portion of the natural gas gathering system(s) to which the well(s) will be connected.

XII. Line Capacity. The natural gas gathering system ☐ will ☐ will not have capacity to gather 100% of the anticipated natural gas production volume from the well prior to the date of first production.

XIII. Line Pressure. Operator ☐ does ☐ does not anticipate that its existing well(s) connected to the same segment, or portion, of the natural gas gathering system(s) described above will continue to meet anticipated increases in line pressure caused by the new well(s).

☐ Attach Operator's plan to manage production in response to the increased line pressure.

XIV. Confidentiality: ☐ Operator asserts confidentiality pursuant to Section 71-2-8 NMSA 1978 for the information provided in Section 2 as provided in Paragraph (2) of Subsection D of 19.15.27.9 NMAC, and attaches a full description of the specific information for which confidentiality is asserted and the basis for such assertion.

Section 3 - Certifications

Effective May 25, 2021

Operator certifies that, after reasonable inquiry and based on the available information at the time of submittal:

☒ Operator will be able to connect the well(s) to a natural gas gathering system in the general area with sufficient capacity to transport one hundred percent of the anticipated volume of natural gas produced from the well(s) commencing on the date of first production, taking into account the current and anticipated volumes of produced natural gas from other wells connected to the pipeline gathering system; or

☐ Operator will not be able to connect to a natural gas gathering system in the general area with sufficient capacity to transport one hundred percent of the anticipated volume of natural gas produced from the well(s) commencing on the date of first production, taking into account the current and anticipated volumes of produced natural gas from other wells connected to the pipeline gathering system.

If Operator checks this box, Operator will select one of the following:

Well Shut-In. ☐ Operator will shut-in and not produce the well until it submits the certification required by Paragraph (4) of Subsection D of 19.15.27.9 NMAC; or

Venting and Flaring Plan. ☐ Operator has attached a venting and flaring plan that evaluates and selects one or more of the potential alternative beneficial uses for the natural gas until a natural gas gathering system is available, including:

- (a) power generation on lease;
- (b) power generation for grid;
- (c) compression on lease;
- (d) liquids removal on lease;
- (e) reinjection for underground storage;
- (f) reinjection for temporary storage;
- (g) reinjection for enhanced oil recovery;
- (h) fuel cell production; and
- (i) other alternative beneficial uses approved by the division.

Section 4 - Notices

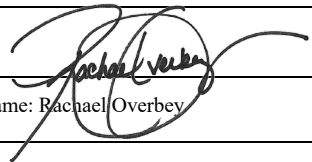
1. If, at any time after Operator submits this Natural Gas Management Plan and before the well is spud:

(a) Operator becomes aware that the natural gas gathering system it planned to connect the well(s) to has become unavailable or will not have capacity to transport one hundred percent of the production from the well(s), no later than 20 days after becoming aware of such information, Operator shall submit for OCD's approval a new or revised venting and flaring plan containing the information specified in Paragraph (5) of Subsection D of 19.15.27.9 NMAC; or

(b) Operator becomes aware that it has, cumulatively for the year, become out of compliance with its baseline natural gas capture rate or natural gas capture requirement, no later than 20 days after becoming aware of such information, Operator shall submit for OCD's approval a new or revised Natural Gas Management Plan for each well it plans to spud during the next 90 days containing the information specified in Paragraph (2) of Subsection D of 19.15.27.9 NMAC, and shall file an update for each Natural Gas Management Plan until Operator is back in compliance with its baseline natural gas capture rate or natural gas capture requirement.

2. OCD may deny or conditionally approve an APD if Operator does not make a certification, fails to submit an adequate venting and flaring plan which includes alternative beneficial uses for the anticipated volume of natural gas produced, or if OCD determines that Operator will not have adequate natural gas takeaway capacity at the time a well will be spud.

I certify that, after reasonable inquiry, the statements in and attached to this Natural Gas Management Plan are true and correct to the best of my knowledge and acknowledge that a false statement may be subject to civil and criminal penalties under the Oil and Gas Act.

| |
|--|
| Signature:  |
| Printed Name: Rachael Overbey |
| Title: Director Operations Planning & Regulatory |
| E-mail Address: roverbey@fmelle.com |
| Date: 2/28/2023 |
| Phone: 720-414-7868 |
| OIL CONSERVATION DIVISION (Only applicable when submitted as a standalone form) |
| Approved By: |
| Title: |
| Approval Date: |
| Conditions of Approval: |

NATURAL GAS MANAGEMENT PLAN

III. Well(s): Provide the following information for each new or recompleted well or set of wells proposed to be drilled or proposed to be recompleted from a single well pad or connected to a central delivery point.

| Well Name | API 14 Digit | ULSTR | Surface Location FTG | Anticipated Oil BBL/D | Anticipated Gas MCF/D | Anticipated Produced Water BBL/D |
|----------------------|--------------|------------------|----------------------|-----------------------|-----------------------|----------------------------------|
| Eagle State Com 301H | TBD | Lot 4, 3-19S-35E | 325 FNL 645 FWL | 800 +/- | 700 +/- | 2500 +/- |
| Eagle State Com 302H | TBD | Lot 4, 3-19S-35E | 400 FNL 745 FWL | 800 +/- | 700 +/- | 2500 +/- |
| Eagle State Com 303H | TBD | Lot 3, 3-19S-35E | 325 FNL 1920 FWL | 800 +/- | 700 +/- | 2500 +/- |
| Eagle State Com 501H | TBD | Lot 4, 3-19S-35E | 325 FNL 670 FWL | 800 +/- | 700 +/- | 2500 +/- |
| Eagle State Com 502H | TBD | Lot 3, 3-19S-35E | 400 FNL 1945 FWL | 800 +/- | 700 +/- | 2500 +/- |
| Eagle State Com 601H | TBD | Lot 4, 3-19S-35E | 400 FNL 720 FWL | 800 +/- | 700 +/- | 2500 +/- |
| Eagle State Com 602H | TBD | Lot 3, 3-19S-35E | 400 FNL 1895 FWL | 800 +/- | 700 +/- | 2500 +/- |
| Eagle State Com 701H | TBD | Lot 4, 3-19S-35E | 325 FNL 695 FWL | 800 +/- | 700 +/- | 2500 +/- |
| Eagle State Com 702H | TBD | Lot 3, 3-19S-35E | 400 FNL 1920 FWL | 800 +/- | 700 +/- | 2500 +/- |
| Eagle State Com 703H | TBD | Lot 3, 3-19S-35E | 325 FNL 1945 FWL | 800 +/- | 700 +/- | 2500 +/- |
| Norte State Com 601H | TBD | Lot 4, 3-19S-35E | 400 FNL 670 FWL | 800 +/- | 700 +/- | 2500 +/- |
| Norte State Com 602H | TBD | Lot 3, 3-19S-35E | 400 FNL 1995 FWL | 800 +/- | 700 +/- | 2500 +/- |
| Norte State Com 701H | TBD | Lot 4, 3-19S-35E | 400 FNL 645 FWL | 800 +/- | 700 +/- | 2500 +/- |
| Norte State Com 702H | TBD | Lot 3, 3-19S-35E | 325 FNL 1995 FWL | 800 +/- | 700 +/- | 2500 +/- |
| | | | | | | |

V. Anticipated Schedule: Provide the following information for each new or recompleted well or set of wells proposed to be drilled or proposed to be recompleted from a single well pad or connected to a central delivery point.

| Well Name | API 14 Digit | Spud Date (Batch Drilling) | TD Reached Date | Completion Commencement Date | Initial Flowback Date | First Production Date |
|----------------------|--------------|----------------------------|-----------------|------------------------------|-----------------------|-----------------------|
| Eagle State Com 301H | TBD | 5/1/2023 | 8/21/2023 | 9/5/2023 | 9/15/2023 | 9/17/2023 |
| Eagle State Com 302H | TBD | 5/1/2023 | 8/21/2023 | 9/5/2023 | 9/15/2023 | 9/17/2023 |
| Eagle State Com 303H | TBD | 6/1/2023 | 9/21/2023 | 10/6/2023 | 10/16/2023 | 10/18/2023 |
| Eagle State Com 501H | TBD | 5/1/2023 | 8/21/2023 | 9/5/2023 | 9/15/2023 | 9/17/2023 |
| Eagle State Com 502H | TBD | 6/1/2023 | 9/21/2023 | 10/6/2023 | 10/16/2023 | 10/18/2023 |
| Eagle State Com 601H | TBD | 5/1/2023 | 8/21/2023 | 9/5/2023 | 9/15/2023 | 9/17/2023 |
| Eagle State Com 602H | TBD | 6/1/2023 | 9/21/2023 | 10/6/2023 | 10/16/2023 | 10/18/2023 |
| Eagle State Com 701H | TBD | 5/1/2023 | 8/21/2023 | 9/5/2023 | 9/15/2023 | 9/17/2023 |
| Eagle State Com 702H | TBD | 6/1/2023 | 9/21/2023 | 10/6/2023 | 10/16/2023 | 10/18/2023 |
| Eagle State Com 703H | TBD | 6/1/2023 | 9/21/2023 | 10/6/2023 | 10/16/2023 | 10/18/2023 |
| Norte State Com 601H | TBD | 5/1/2023 | 8/21/2023 | 9/5/2023 | 9/15/2023 | 9/17/2023 |
| Norte State Com 602H | TBD | 6/1/2023 | 9/21/2023 | 10/6/2023 | 10/16/2023 | 10/18/2023 |
| Norte State Com 701H | TBD | 5/1/2023 | 8/21/2023 | 9/5/2023 | 9/15/2023 | 9/17/2023 |
| Norte State Com 702H | | 6/1/2023 | 9/21/2023 | 10/6/2023 | 10/16/2023 | 10/18/2023 |
| | | | | | | |



Natural Gas Management Plan

Items VI-VIII

VI. Separation Equipment: Attach a complete description of how Operator will size separation equipment to optimize gas capture.

- Data from surrounding wells is used to generate type curves which provides the basis for expected gas rates during initial production, peak production and then the natural decline.
- Separation equipment will be sized to provide adequate separation for peak production.
- Facility design includes multiple stages of separation to minimize gas waste. Wells flow through a 3-phase separator to remove gas. Gas from the 3 Phase separators are then sent through a gas scrubber before being route to treatment and/or sales.
- Industry standard sizing calculations are used for gas-liquid separation and liquid-liquid separation.

VII. Operational Practices: Attach a complete description of the actions Operator will take to comply with the requirements of Subsection A through F 19.15.27.8 NMAC.

- Drilling, completion and production setup is designed to minimize the waste of natural gas and to flare instead of vent.
- *Drilling Operations:*
 - Natural gas encountered will be flared instead of vented unless there is an equipment malfunction and/or to avoid risking safety or the environment.
 - Flares will be properly sized and placed at least 100' from the nearest surface hole on the pad.
- *Completions/Recompletions Operations:*
 - Flowback operations will not commence until connected to a properly sized gas gathering system.
 - During initial flowback wells are routed to the separation equipment as soon as technically feasible to minimize gas waste.
 - During separation flowback wells are routed to the separation equipment to minimize gas waste.
 - Gas sales is maximized. Gas will be flared instead of vented during an emergency or malfunction to avoid posing a risk to operations or personnel safety.
 - Flares are properly sized with a continuous pilot.
- *Production Operations:*
 - Gas sales will be maximized. Gas will be flared instead of vented during an emergency or malfunction to avoid posing a risk to operations or personnel safety.
 - After a well is stabilized from liquid unloading, the well will be turned back into the collection system.
- *Performance Standards:*
 - The facility will be designed to handle peak production rates and pressures.
 - All tanks will have automatic gauging equipment.
 - Flares will be designed to ensure proper combustion and will have continuous pilots. Flares will be located 100' from nearest surface hole on the pad and storage tanks.
 - Weekly AVOs will be performed, and any leaking thief hatches will be cleaned and properly re-sealed.
- *Measurement and Calibration:*



- All volume that is flared and vented that is not measured will be estimated.
- When metering is not practical due to low pressure/rate, all vented or flared volumes will be estimated.
- Measurement will conform to industry standards. Measurement will not be bypassed except for purposes of inspection or calibration.

VIII. Best Management Practices: Attach a complete description of Operator's best management practices to minimize venting during active and planned maintenance.

- Venting will be minimized during active and planned maintenance.
- Systems and equipment requiring maintenance will be isolated and blown down to sales and then flare before any remaining gas is vented in an effort to minimize waste and venting.
- Downhole maintenance will use best management practices to minimize vent.

Eagle/Norte NGMP Map
Feb 2023
- Capacities reflected are FME's understanding of 3rd party midstream system capacities

