

Submit a Copy To Appropriate District  
Office  
District I – (575) 393-6161  
1625 N. French Dr., Hobbs, NM 88240  
District II – (575) 748-1283  
811 S. First St., Artesia, NM 88210  
District III – (505) 334-6178  
1000 Rio Brazos Rd., Aztec, NM 87410  
District IV – (505) 476-3460  
1220 S. St. Francis Dr., Santa Fe, NM  
87505

State of New Mexico  
Energy, Minerals and Natural Resources

Form C-103  
Revised July 18, 2013

OIL CONSERVATION DIVISION  
1220 South St. Francis Dr.  
Santa Fe, NM 87505

WELL API NO. 30-015-39401
5. Indicate Type of Lease STATE <input checked="" type="checkbox"/> FEE <input type="checkbox"/>
6. State Oil & Gas Lease No. B0-9603-0025
7. Lease Name or Unit Agreement Name EMPIRE ABO UNIT [309164]
8. Well Number 417
9. OGRID Number 873
10. Pool name or Wildcat Empire; Abo (22040)
4. Well Location Unit Letter <u>P</u> : <u>1110</u> feet from the <u>FSL</u> line and <u>630</u> feet from the <u>FEL</u> line Section <u>36</u> Township <u>17S</u> Range <u>27E</u> NMPM County <u>EDDY</u>
11. Elevation (Show whether DR, RKB, RT, GR, etc.) 3671 GL

SUNDRY NOTICES AND REPORTS ON WELLS

(DO NOT USE THIS FORM FOR PROPOSALS TO DRILL OR TO DEEPEN OR PLUG BACK TO A DIFFERENT RESERVOIR. USE "APPLICATION FOR PERMIT" (FORM C-101) FOR SUCH PROPOSALS.)

1. Type of Well: Oil Well ☒ Gas Well ☐ Other

2. Name of Operator  
Apache Corporation

3. Address of Operator  
303 Veterans Airpark Lane, Suite 1000 Midland, TX 79705

12. Check Appropriate Box to Indicate Nature of Notice, Report or Other Data

NOTICE OF INTENTION TO:

PERFORM REMEDIAL WORK ☐ PLUG AND ABANDON ☐  
TEMPORARILY ABANDON ☐ CHANGE PLANS ☐  
PULL OR ALTER CASING ☐ MULTIPLE COMPL ☐  
DOWNHOLE COMMINGLE ☐  
CLOSED-LOOP SYSTEM ☐  
OTHER: ☐

SUBSEQUENT REPORT OF:

REMEDIAL WORK ☐ ALTERING CASING ☐  
COMMENCE DRILLING OPNS. ☐ P AND A ☐  
CASING/CEMENT JOB ☐  
OTHER: TA EXTENSION ☒

13. Describe proposed or completed operations. (Clearly state all pertinent details, and give pertinent dates, including estimated date of starting any proposed work). SEE RULE 19.15.7.14 NMAC. For Multiple Completions: Attach wellbore diagram of proposed completion or recompletion.

APACHE HAS PERFORMED THE REQUIRED MIT AND REQUEST A TA EXTENSION

MIT ATTACHED

TA Status Approved until 3/6/2024

No reported production

Spud Date:

1/19/2012

Rig Release Date:

I hereby certify that the information above is true and complete to the best of my knowledge and belief.

SIGNATURE alicia fulton TITLE Sr. Reg Analyst DATE 3/6/2023

Type or print name Alicia Fulton E-mail address: alicia.fulton@apachecorp.com PHONE: (432) 818-1088

**For State Use Only**

APPROVED BY: [Signature] TITLE Staff Manager DATE 3/16/23  
Conditions of Approval (if any):



SPL

## Pressure Recorder Calibration Certificate

Company Name: Apache

Certificate #: 668613\_111422

Recorder Type: Metco

Serial #: 668613

Pressure Range 1: 0-1000#

Accuracy: +/- 0.2% PSIG

Pressure Range 2: NA

Accuracy: +/- 0.2% PSIG

Temperature Range: NA

Accuracy: +/- 0.1% Deg. F

### Pressure Pen 1

### Temperature Pen

Increasing Pressure (PSIG)			Decreasing Pressure (PSIG)			Temperature Test (F°)		
Applied Pressure	Indicated Pressure	Error %	Applied Pressure	Indicated Pressure	Error %	Applied Temperature	Indicated Temperature	Error %
0	0	0	800	800	0	0	0	0
100	0	0	600	600	0	0	0	0
300	300	0	400	400	0	0	0	0
500	500	0	200	200	0	0	0	0
0	0	0	50	50	0	0	0	0
1000	1000	0	0	0	0	0	0	0

### Pressure Pen 2

Increasing Pressure (PSIG)			Decreasing Pressure (PSIG)		
Applied Pressure	Indicated Pressure	Error %	Applied Pressure	Indicated Pressure	Error %
0	0	0	0	0	0
0	0	0	0	0	0
0	0	0	0	0	0
0	0	0	0	0	0
0	0	0	0	0	0
0	0	0	0	0	0

This is to certify that this instrument has been inspected and calibrated using a certified 10,000 psi Crystal Gauge.

Calibrated By: Chris Villeneuve

Calibration

Date: 11-14-2022

SPL Pressure Recorder Certificate

SPL-Inc.co

State of New Mexico  
Energy, Minerals and Natural Resources Department

Michelle Lujan Grisham  
Governor

Sarah Cottrell Propst  
Cabinet Secretary

Todd E. Leahy, JD, PhD  
Deputy Secretary



Date: 3-6-2023

API# 30-015-39401

A Mechanical Integrity Test (M.I.T.) was performed on, Well Empire Abo Unit #417

     M.I.T. is successful, the original chart has been retained by the Operator on site. Send a legible scan of the chart with an attached **Original C-103 Form** indicating reason for the test, via post mail to District NMOCD field office. A scanned image will appear online via NMOCD website, [www.emnrd.state.nm.us/ocd/OCDOOnline.htm](http://www.emnrd.state.nm.us/ocd/OCDOOnline.htm) 7 to 10 days after postdating.

     M.I.T. is unsuccessful, the original chart is returned to the Operator. Repairs will be made; Operator is to schedule for a re-test within a 90-day period. If this is a test of a repaired well currently in non-compliance, all dates and requirements of the original are still in effect.

**No expectation of extension should be construed because of this test.**

X M.I.T. for Temporary Abandonment, shall include a detailed description on **Form C-103**, including the location of the CIBP and any other tubular goods in the well including the Operator's request for TA status timeline.

     M.I.T. is successful, after the secondary request of a scheduled M.I.T. is performed. Therefore, Operator has within a 30-day period from the M.I.T. to submit a current C-103 along with a legible scan of the Chart, including a detailed description of the repair(s). **Only after receipt of the C-103 will the non-compliance be closed.**

     M.I.T. is successful, Initial of an injection well, you must submit a **form C-103** to NMOCD within 30 days. A **C-103 form** must include a detailed description of the work performed on this well including the position of the packer, tubing Information, the date of first Injection, the tubing pressure and Injection volume.

Please contact me for verification to ensure documentation requirements are in place prior to injection process.

**If I can be of additional assistance, please feel free to contact me at (575) 703-4641**  
Thank You,

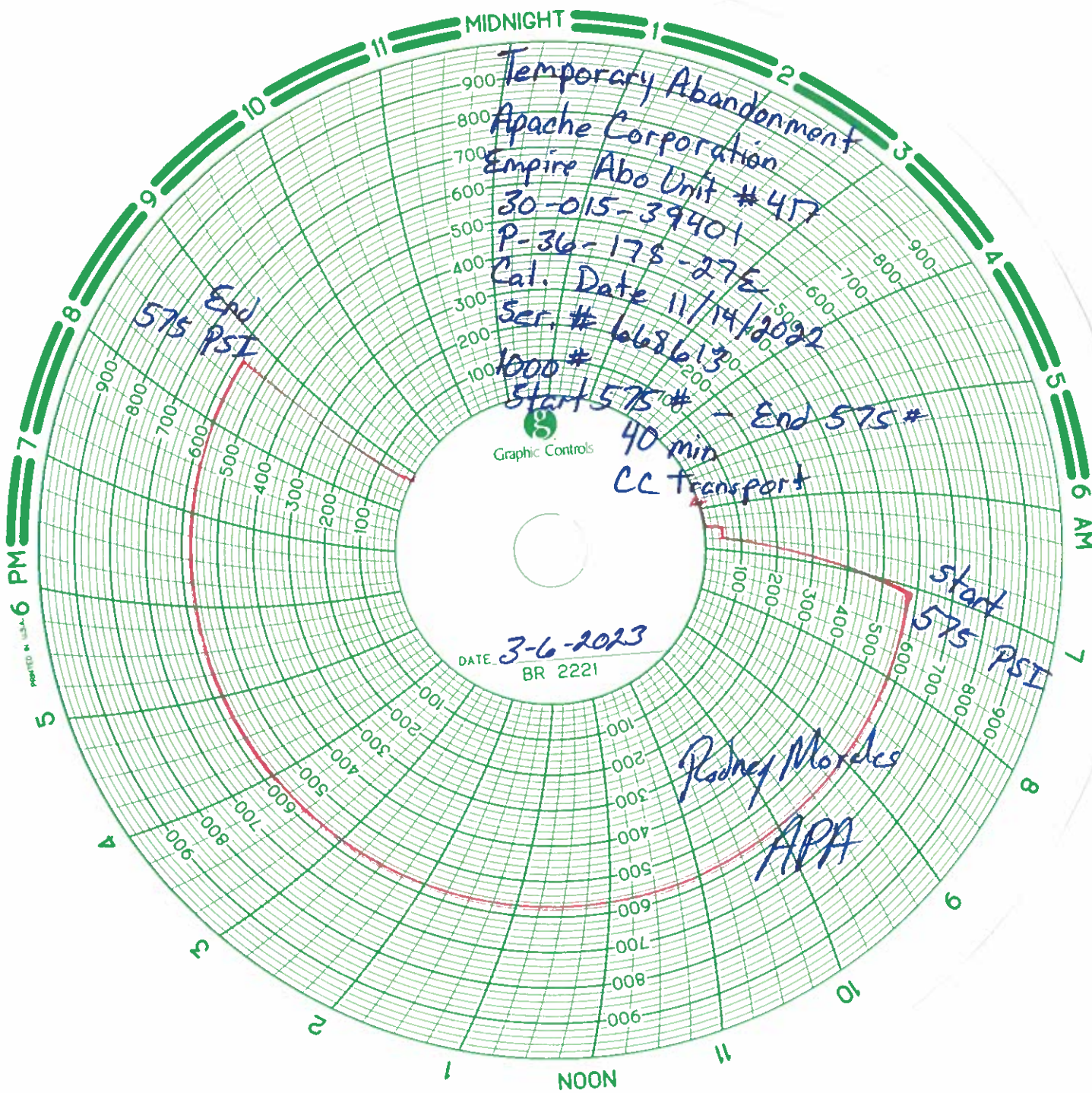
Barbara Lydick, Compliance Officer  
EMNRD-O.C.D.  
575-703-4641  
[barbara.lydick@emnrd.nm.gov](mailto:barbara.lydick@emnrd.nm.gov)  
District 2 – Artesia, NM

*Rodney Morales*

*APA*

*575-602-5537*





Well Info  
Legal Well Name: EMPIRE ABO UNIT #417  
API/Surface Loc: 3001539401  
Spud Date: 1/9/2012  
Original Drilling Rig Release: 1/24/2012  
Target Formation: ABO  
Field Name: Empire  
County: Eddy  
State/Province: New Mexico  
Surface Legal Location:

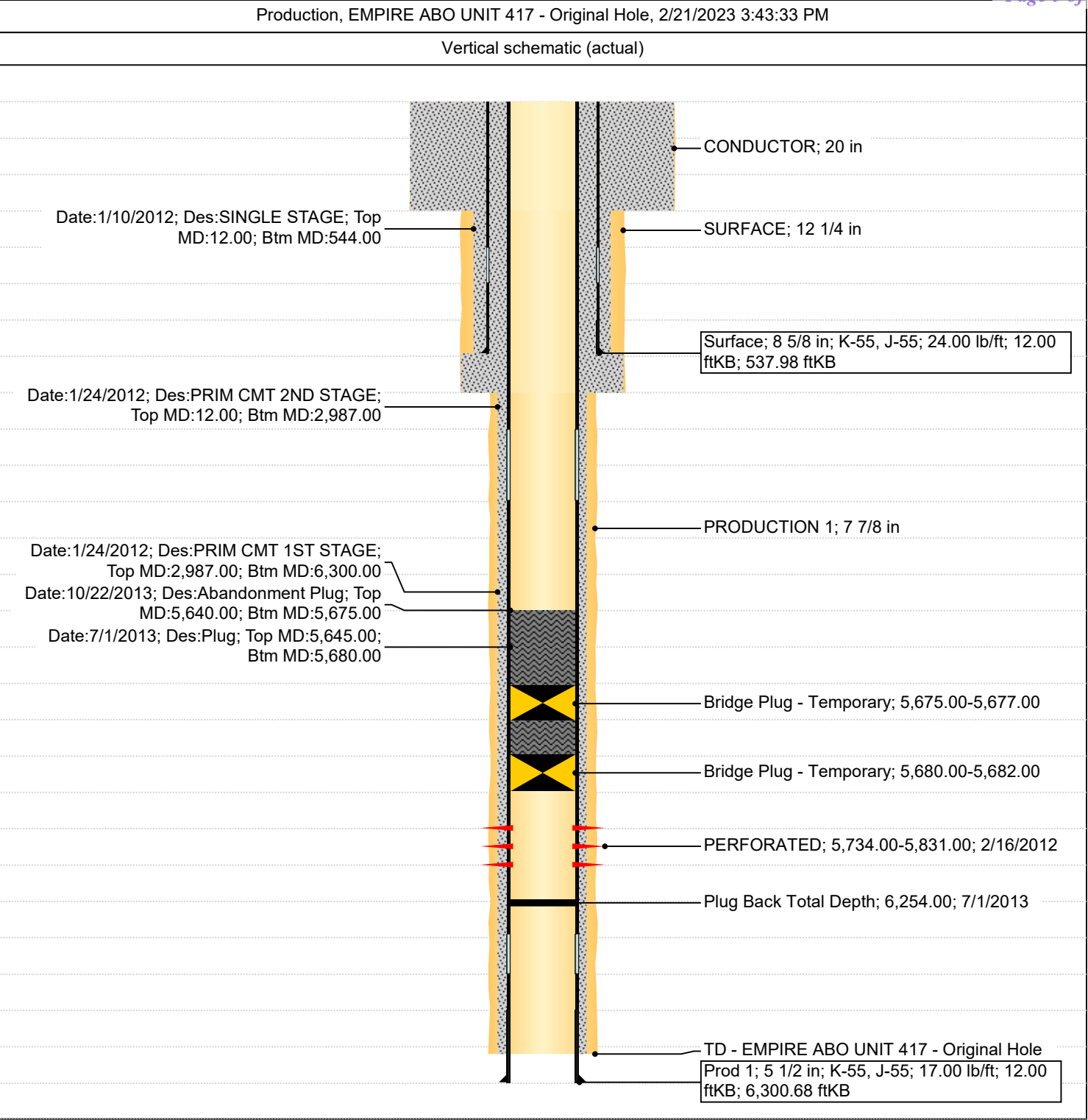
Bottom Hole Location:  
Bottom Hole Legal Location:  
EMPIRE ABO UNIT 417 - Original Hole  
East-West Distance (ft): 533.294 From E or W Line:  
EMPIRE ABO UNIT 417 - Original Hole  
North-South Distance (ft): 649.87 From N or S Line:  
Original Drilling Rig Release: 1/24/2012  
Original KB Elevation (ft): 3,683.0  
Ground Elevation (ft): 3,671.0  
KB-Ground Distance (ft): 12.0  
Total Depth (All) (ftKB): Original Hole - 6,300.0  
Total Depth All (TVD) (ftKB): Original Hole - 6,297.3

Kick Offs & Key Depths  
Type: Top Depth (ftKB):  
Total Depth (ftKB): 6,300.0  
PBTD (All) (ftKB): Original Hole - 6,254

DV Tool/Stage Tool	
Item Des	Top (ftKB)
Float Collar - CEMENT STAGE TOOL	2,985.88

Total Perforations Interval	
Type PERFORATED	Top Depth (ftKB) 5,734
Type PERFORATED	Bottom Depth (ftKB) 5,831

Cement Detail						
Des	String	Top (ftKB)	Btm (ftKB)	Top Meas Meth	Class	Amount (sacks)
SURFACE	Surface, 537.98ftKB, 8 5/8				CLASS C	200
SURFACE	Surface, 537.98ftKB, 8 5/8				CLASS C	350
SURFACE	Surface, 537.98ftKB, 8 5/8					
SURFACE	Surface, 537.98ftKB, 8 5/8				CLASS C	
SURFACE	Surface, 537.98ftKB, 8 5/8					
PRODUCTION 1	Prod 1, 6,300.68ftKB, 5 1/2				CLASS C	700
PRODUCTION 1	Prod 1, 6,300.68ftKB, 5 1/2					
PRODUCTION 1	Prod 1, 6,300.68ftKB, 5 1/2					
PRODUCTION 1	Prod 1, 6,300.68ftKB, 5 1/2				CLASS C	425
PRODUCTION 1	Prod 1, 6,300.68ftKB, 5 1/2				CLSS C	150
PRODUCTION 1	Prod 1, 6,300.68ftKB, 5 1/2					
PRODUCTION 1	Prod 1, 6,300.68ftKB, 5 1/2					
Abandonment Plug	Prod 1, 6,300.68ftKB, 5 1/2	5,645.00	5,680.00			5



**District I**  
1625 N. French Dr., Hobbs, NM 88240  
Phone:(575) 393-6161 Fax:(575) 393-0720  
**District II**  
811 S. First St., Artesia, NM 88210  
Phone:(575) 748-1283 Fax:(575) 748-9720  
**District III**  
1000 Rio Brazos Rd., Aztec, NM 87410  
Phone:(505) 334-6178 Fax:(505) 334-6170  
**District IV**  
1220 S. St Francis Dr., Santa Fe, NM 87505  
Phone:(505) 476-3470 Fax:(505) 476-3462

**State of New Mexico**  
**Energy, Minerals and Natural Resources**  
**Oil Conservation Division**  
**1220 S. St Francis Dr.**  
**Santa Fe, NM 87505**

CONDITIONS

Action 193734

CONDITIONS

Operator: APACHE CORPORATION 303 Veterans Airpark Ln Midland, TX 79705	OGRID: 873
	Action Number: 193734
	Action Type: [C-103] Sub. Temporary Abandonment (C-103U)

CONDITIONS

Created By	Condition	Condition Date
gcordero	None	3/16/2023