

U.S. Department of the Interior
BUREAU OF LAND MANAGEMENT

10/18/2022

Well Name: RR ZANOTTI	Well Location: T24N / R7W / SEC 34 / NENW / 36.275238 / -107.564377	County or Parish/State: RIO ARRIBA / NM
Well Number: 1	Type of Well: OIL WELL	Allottee or Tribe Name:
Lease Number: NMSF080107	Unit or CA Name:	Unit or CA Number:
US Well Number: 300390527200S1	Well Status: Abandoned	Operator: EPIC ENERGY LLC

Subsequent Report

Sundry ID: 2698229

Type of Submission: Subsequent Report

Type of Action: Plug and Abandonment

Date Sundry Submitted: 10/14/2022

Time Sundry Submitted: 01:00

Date Operation Actually Began: 10/14/2022

Actual Procedure: Please find attached the P&A Summary Report and WBD for the subject well.

SR Attachments

Actual Procedure

R_R_Zanotti_1_P_A_Summary_WBD_20221014125923.pdf

Well Name: RR ZANOTTI

Well Location: T24N / R7W / SEC 34 /
NENW / 36.275238 / -107.564377County or Parish/State: RIO
ARRIBA / NM

Well Number: 1

Type of Well: OIL WELL

Allottee or Tribe Name:

Lease Number: NMSF080107

Unit or CA Name:

Unit or CA Number:

US Well Number: 300390527200S1

Well Status: Abandoned

Operator: EPIC ENERGY LLC

Operator

I certify that the foregoing is true and correct. Title 18 U.S.C. Section 1001 and Title 43 U.S.C. Section 1212, make it a crime for any person knowingly and willfully to make to any department or agency of the United States any false, fictitious or fraudulent statements or representations as to any matter within its jurisdiction. Electronic submission of Sundry Notices through this system satisfies regulations requiring a

Operator Electronic Signature: ARLEEN SMITH

Signed on: OCT 14, 2022 01:00 PM

Name: EPIC ENERGY LLC

Title: Regulatory Specialist

Street Address: 332 RD 3100

City: AZTEC

State: NM

Phone: (505) 327-4892

Email address: ARLEEN@WALSHENG.NET

Field

Representative Name:

Street Address:

City:

State:

Zip:

Phone:

Email address:

BLM Point of Contact

BLM POC Name: KENNETH G RENNICK

BLM POC Title: Petroleum Engineer

BLM POC Phone: 5055647742

BLM POC Email Address: krennick@blm.gov

Disposition: Accepted

Disposition Date: 10/18/2022

Signature: Kenneth Rennick

Epic Energy LLC

RR Zanotti #1

Date Comp: 9/1/2022

Plug #	Formation	Formation Top	Perfs	CICR Depth	Cement Detail	Cement Plug Depth	Plug Position
1	Gallup	5426'	5604'-5678'	5554'	37sx Type III cement (50.7 cuft)	5604'-5194'	Inside
2	Mancos	4590'	4640'	4590'	46sx Type III cement (63.0 cuft)	4590'-4461'	Inside
3	Mesaverde PT LO	4380	4430'	-	86sx Type III cement (117.9 cuft)	4461'-3601'	Inside
4	Mesaverde Cliff House	2890'	-	-	86sx Type III cement (117.9 cuft)	3601'-2557'	Inside
5	Chacra	2305'	-	-	21sx Type III cement 2% CC (28.8 cuft)	2361'-2185'	Inside
6	PC/Fruitland	2060'/1855'	-	-	40sx Type III cement (55.5 cuft)	2110'-1705'	Inside
7	Kirtland/OJO	1590'/1465'	-	-	33sx Type III cement 2% CC (45.2 cuft)	1637'-1343'	Inside
8	Surface	-	444'	-	208sx Type III cement (284.96 cuft)	444'-surface	Inside/Out

8/25/2022 - Left Federal B #8 at 10:00. M&P, Derrick in the air @ 1200. SICP=5psi/SITP=0. Unseated pump at 12K, Rod weight at 10K. POH laying down rods. Laid down Polished rod, 24-7/8" plain rods, 197-3/4" plain and gilded rods, 1-2" and 1-4"x7/8" pony rods and pump. RU to pull tbg. Secured the well for the evening. Crew off location at 1800. BLM and NMOC have been notified.

8/26/2022 - SITP=Vac/SICP=5 psi. Bled down casing pressure to rig pit. ND B Adapter and PU on tbg, string wt at 25K, no TAC. NU BOP and function test. POH with tubing and tally on the way out. Got out with 173 joints of 2-3/8", 4.7#, J55 Tbg and SN. Spot in tbg trailer. MU 4-3/4" bit, scraper, bit sub and 2-3/8" SN with standing valve in place. Run 86 joints, load and pressure test tbg to 700 psi. Held. Continue TIH. Ran Bit to 5599', pressure tested tbg to 700 psi, held. Released pressure and POH with bit and scraper. LD bit and scraper. MU setting tool and CICR on tbg and TIH. Set CICR at 5554' with 169 jts in plus 20' of subs. Established Injection rate down tbg of 1.5 bpm at 800 psi. Stung out of the retainer and circulated the wellbore with 126 bbls of fresh water. Got back immulsified oil, water and drilling mud. Stung back in the retainer and est rate. Attempted to pressure test casing to 400 psi, started pumping in at 300 psi. Shut down and secured the well for the weekend. Crew off location at 1830.

8/29/2022 - SICP/SITP=0. tbg and Csg on slight vacuum. JHA with crew. RU Cementers to tbg. M&P 37 sks, 1.37 yield, 50.7 cuft, 9 bbls, 14.9# type III neat cement (pump 13 sks, 1.37 yield, 17.8 cuft, 3.2 bbls below retainer, stung out of retainer and pump 24 sks, 1.37 yield, 32.9 cuft, 5.9 bbls on top of retainer). Displaced with 20.1 bbls fresh water. POH laying down 13 joints. Reverse circulate clean with 30 bbls of fresh water. Got back a trace of cement. POH with setting tool. WOC. TIH and tagged TOC @ 5194'. Pressure tested casing to 500 psi. Lost 100 psi in 2 minutes. LD tbg to 4590' and stand rest in the derrick. LD tag sub and secured the well for the evening. Crew off location at 1700.

8/30/2022 - SITP/SICP=0. JHA with crew. RU WL for CBL. WL Tagged TOC at 5180'. Start logging on the way out. Chacra formation @ 2305' showing very little bond. Surface showing free pipe from shoe at 394' to 66', no cement. RIH with perf guns. Perforated 4 shots at 4640'. POH with perf guns. Got out with guns, all shots fired. Closed blind rams and attempt Injection rate. Pressured to 600 psi, lost 200 psi in 1 min and down to 300 psi in 2 minutes. Bled pressure back to rig pit. TIH with WLCR. Set CR @ 4590'. POH with setting tool. LD setting tool and MU stinger on tbg and TIH. Stung into retainer, attempt to test casing to 500 psi. Lost 100 psi in 3 minutes. Bled pressure back to rig pit. Established Injection rate of 1.5 bpm at 200 psi. M&P 46 sks, 63 cuft, 11.2 bbls, 14.6# type III neat cement (Pumped 31 sks below and started getting communication out of casing). Stung out of retainer, reverse circulate tbg clean and respot upper plug with 15 sks, 1.37 yield, 20.7 cuft, 3.7 bbls, 14.6# type III neat cement from 4590' to 4430'. Displaced with 16.7 bbls. LD tbg to 4430'. Reverse circulate clean. POH with stinger. Got out with stinger. Secure the well for the evening. Crew off location at 1630.

8/31/2022 - SITP/SICP=0. JHA with crew. RIH and tag TOC. WL tagged TOC @ 4461'. Perforated at 4430'. POH with perf guns. LD guns, all shots fired. Closed Blind rams and attempt to pressure test casing to 500 psi. Lost 280 psi in 10 minutes. Discussed with BLM office results of test. Will be pumping inside plug (no CICR). TIH with tag sub to 4461'. M&P 86 sks, 1.37 yield, 117.9 cuft, 21 bbls type III neat cement from 4461' to 3601' TOC. Displaced with 14 bbls of water. LD 26 joints to 3601', reverse circulate tbg clean. M&P 86 sks, 1.37 yield, 117.9 cuft, 21 bbls type III neat cement from 3601' to 2741'. Displaced with 10 bbls of water. POH LD 26 joints and stand back 3 stands to 2492' Reverse circulate tbg clean. POH with 3 stands to 2230'. WOC. TIH and tagged TOC at 2557' (184' high). LD tbg to 2361'. M&P 21 sks, 1.37 yield, 28.8 cuft, 5.1 bbls, type III neat cement w/2% cacl, from 2361' to 2152'. Displaced with 8 bbls of water. LD 7 joints slowly and stand back 3 stands. Reverse circulate clean. POH with 7 stands, EOT @ 1481'. Secured the well for the evening. Crew off location at 1830'.

9/1/2022 - SICP/SITP=0. JHA with crew. TIH and tagged TOC at 2185'. Attempt to pressure test casing to 580 psi. Lost 40 psi in 15 minutes. Inspector ok'd test. POH LD tbg to 2110'. M&P 40 sks, 1.37 yield, 55.5 cuft, 9.9 bbls type III neat cement with 2% cacl from 2110' to 1705'. Displaced with 6 bbls of water. POH LD Tbg to 1673'. M&P 33 sks, 1.37 yield, 45.2 cuft, 8.1 bbls, type III neat cement with 2 % cacl from 1673' to 1343', displaced with 4.7bbls of water. LD remaining tubing. Top off casing with fluid. RU WL. RIH with perf guns and shoot at 444'. POH with perf guns. Got out with tools, all shots fired. Attempt to establish Injection rate down 5-1/2 casing and out bradenhead. 3 bpm at zero pressure, could feel a slight blow out bradenhead. M&P 184 sks, 1.37 cuft, 252.08 cuft, 44.9 bbls, 14.6# from 444' to surface. Circulated 1 bbl of cement. ND BOP and wash clean. Cutoff the wellhead from the casing strings. Strap TOC in 5-1/2 at 12.3' and 5-1/2x8-5/8 at surface. Weld dry hole marker onto the casing strings. Topped off casing strings and cellar with 24 sks, 32.9 cuft, 5.9 bbls, type III neat cement. RD rig and pump. Crew off location at 1730. BLM Inspector Gayle Clayton on location to witness operation. Lat: 35.275238 Long: -107.564377

R.R. Zanotti #1**P&A****Cajon Mesa****560' FNL & 1980' FWL, Section 34, T24N, R7W, Rio Arriba County, NM****API: 30-039-05272**

Hole Size: 10.25"

Spud: 1/25/1958
 Completed: 2/15/1958
 P&A: 9/1/2022
 Elevation: 6954' GL

Ojo Alamo @ 1496'
 Kirtland @ 1629'

Pictured Cliffs @ 2060'

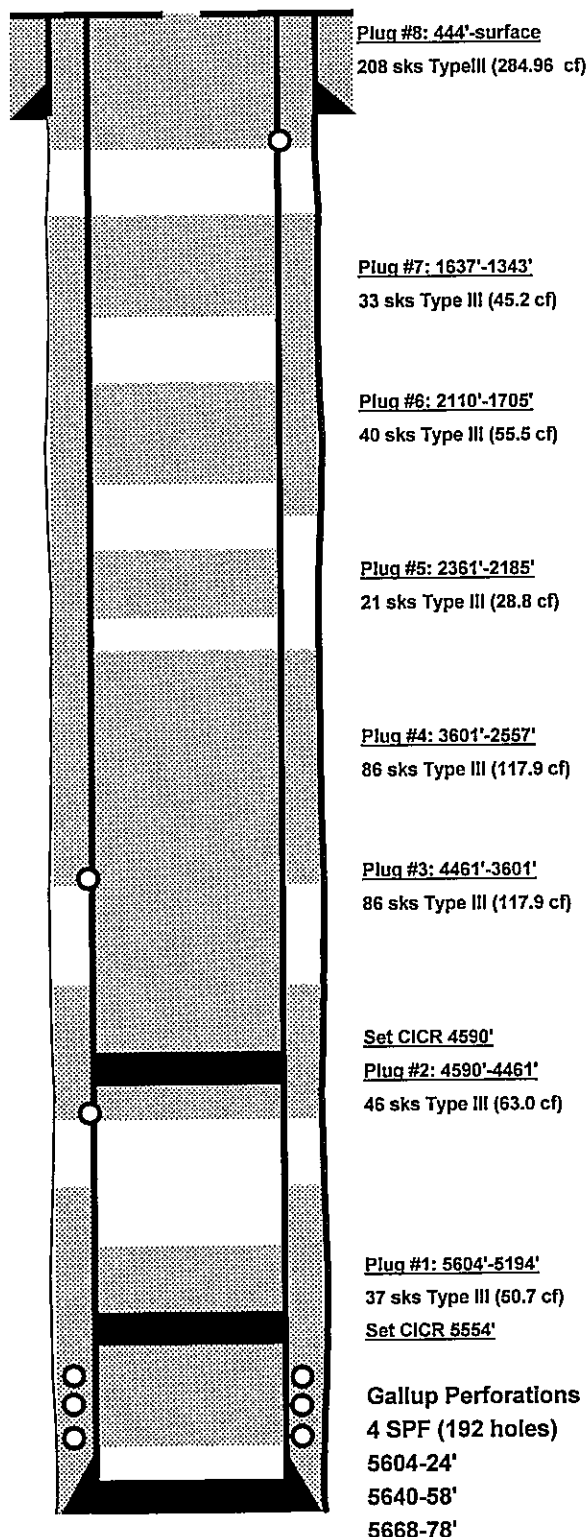
Lewis @ 2202'

Pt Lookout @ 4380'

Mancos @ 4590'

Gallup @ 5415'

Hole Size
 7.875"



PBTD: 5686'
 TD: 5731'

District I
1625 N. French Dr., Hobbs, NM 88240
Phone:(575) 393-6161 Fax:(575) 393-0720
District II
811 S. First St., Artesia, NM 88210
Phone:(575) 748-1283 Fax:(575) 748-9720
District III
1000 Rio Brazos Rd., Aztec, NM 87410
Phone:(505) 334-6178 Fax:(505) 334-6170
District IV
1220 S. St Francis Dr., Santa Fe, NM 87505
Phone:(505) 476-3470 Fax:(505) 476-3462

State of New Mexico
Energy, Minerals and Natural Resources
Oil Conservation Division
1220 S. St Francis Dr.
Santa Fe, NM 87505

CONDITIONS

Action 191991

CONDITIONS

Operator: EPIC ENERGY, L.L.C. 332 Road 3100 Aztec, NM 87410	OGRID: 372834
	Action Number: 191991
	Action Type: [C-103] Sub. Plugging (C-103P)

CONDITIONS

Created By	Condition	Condition Date
mkuehling	well plugged 9/1/22	3/23/2023