

Submit One Copy To Appropriate District

Office

District I

1625 N. French Dr., Hobbs, NM 88240

District II

811 S. First St., Artesia, NM 88210

District III

1000 Rio Brazos Rd., Aztec, NM 87410

District IV

1220 S. St. Francis Dr., Santa Fe, NM

87505

State of New Mexico  
Energy, Minerals and Natural Resources

## OIL CONSERVATION DIVISION

1220 South St. Francis Dr.

Santa Fe, NM 87505

Form C-103

Revised November 3, 2011

WELL API NO.

30-005-60804

5. Indicate Type of Lease

STATE ☒ FEE ☐

6. State Oil &amp; Gas Lease No.

7. Lease Name or Unit Agreement Name  
O'Brien Fee 19

8. Well Number 006

9. OGRID Number

269864

10. Pool name or Wildcat

Twin Lake; San Andres

## SUNDRY NOTICES AND REPORTS ON WELLS

(DO NOT USE THIS FORM FOR PROPOSALS TO DRILL OR TO DEEPEN OR PLUG BACK TO A DIFFERENT RESERVOIR. USE "APPLICATION FOR PERMIT" (FORM C-101) FOR SUCH PROPOSALS.)

1. Type of Well: ☒ Oil Well ☐ Gas Well ☐ Other

2. Name of Operator

Canyon E&amp;P Company

3. Address of Operator

251 O'Connor Ridge Blvd, Irving, TX 75038

4. Well Location

Unit Letter J : 2310 feet from the S line and 2310 feet from the E lineSection 19 Township 08S Range 29E NMPM \_\_\_\_\_ County Chaves

11. Elevation (Show whether DR, RKB, RT, GR, etc.)

12. Check Appropriate Box to Indicate Nature of Notice, Report or Other Data

## NOTICE OF INTENTION TO:

PERFORM REMEDIAL WORK ☐ PLUG AND ABANDON ☐TEMPORARILY ABANDON ☐ CHANGE PLANS ☐PULL OR ALTER CASING ☐ MULTIPLE COMPL ☐OTHER: ☐

## SUBSEQUENT REPORT OF:

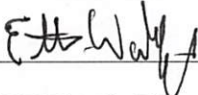
REMEDIAL WORK ☐ ALTERING CASING ☐COMMENCE DRILLING OPNS. ☐ P AND A ☒CASING/CEMENT JOB ☐☒ Location is ready for OCD inspection after P&A☒ All pits have been remediated in compliance with OCD rules and the terms of the Operator's pit permit and closure plan.☒ Rat hole and cellar have been filled and leveled. Cathodic protection holes have been properly abandoned.☒ A steel marker at least 4" in diameter and at least 4' above ground level has been set in concrete. It shows the

**OPERATOR NAME, LEASE NAME, WELL NUMBER, API NUMBER, QUARTER/QUARTER LOCATION OR UNIT LETTER, SECTION, TOWNSHIP, AND RANGE. All INFORMATION HAS BEEN WELDED OR PERMANENTLY STAMPED ON THE MARKER'S SURFACE.**

☐ The location has been leveled as nearly as possible to original ground contour and has been cleared of all junk, trash, flow lines and other production equipment.☐ Anchors, dead men, tie downs and risers have been cut off at least two feet below ground level.☐ If this is a one-well lease or last remaining well on lease, the battery and pit location(s) have been remediated in compliance with OCD rules and the terms of the Operator's pit permit and closure plan. All flow lines, production equipment and junk have been removed from lease and well location.☐ All metal bolts and other materials have been removed. Portable bases have been removed. (Poured onsite concrete bases do not have to be removed.)☐ All other environmental concerns have been addressed as per OCD rules.☐ Pipelines and flow lines have been abandoned in accordance with 19.15.35.10 NMAC. All fluids have been removed from non-retrieved flow lines and pipelines.☐ If this is a one-well lease or last remaining well on lease: all electrical service poles and lines have been removed from lease and well location, except for utility's distribution infrastructure.

When all work has been completed, return this form to the appropriate District office to schedule an inspection.

SIGNATURE



TITLE Authorized Representative

DATE 2/21/22

TYPE OR PRINT NAME Ethan Wakefield

E-MAIL: [e.wakefield@dwsrigs.com](mailto:e.wakefield@dwsrigs.com)

PHONE (405) 343-7736

For State Use Only

APPROVED BY:



TITLE Petroleum Specialist

DATE 4/18/23

## **Canyon E&P Company**

### **Plug And Abandonment End Of Well Report**

#### **O'Brien Fee 19 #006**

2310' FSL & 2310' FEL, Section 19, 08S, 29E

Chaves County, NM / API 30-005-60804

#### **Work Summary:**

- 2/4/23** Made BLM and NMOCD P&A operations notifications at 9:00 AM MST.
- 2/5/23** Arrived on location and held safety meeting. Prepared location using backhoe. R/U P&A rig. Checked well pressures (see pressures below). Bled down well. N/U BOP and function tested. ND WH, RU floor. L/D rods and tubing. Pick up 5.5" scraper. Round trip 2633 feet. L/D scraper. P/U 5.5" cement retainer. TIH and set at 2588". R/U cementing services. Pump plug #1 from 2588' to 1908' with 79 sacks. TOOH. WOC overnight. Secured and shut in well for the day.
- 2/6/23** Arrived on location and held safety meeting. Checked well pressures: Tubing 0 psi, Casing: 0 psi, Bradenhead: 0 psi. Bled down well. Attempted to pressure test casing but was unsuccessful. R/U wireline services. RIH and tagged Plug #1 at 1821'. Logged well. POOH. TIH and pumped mud/gel spacer. TOOH. R/U wireline services. RIH in perforated at 1580'. POOH. Pick up 5.5" packer. TIH and set packer at 1230'. Established injection rate of 4 barrels per minute at 130 psi. R/U cementing services. Pumped plug #2 from 1580' to 1230' with 66 sacks. WOC. TIH and tagged plug #2 at 1270'. Pumped mud/gel spacer. R/U wireline services. RIH and perforated at 960'. POOH. P/U packer. TIH and set at 610'. Established an injection rate of 3 bbls a minute at 250 psi. R/U cementing services. Pumped plug #3 from 960' to 710' with 66 sacks. TOOH. WOC overnight. Secured and shut in well for the day.

- 2/7/23** Arrived on location and held safety meeting. Checked well pressures: Tubing 0 psi, Casing: 0 psi, Bradenhead: 0 psi. Bled down well. TIH and tagged plug #3 at 707'. Pumped mud spacer from 707' to 175'. R/U wireline services. RIH and perforated at 175'. POOH. R/U cementing services. Pumped plug #4 from 175' to surface. Circulated cement through Bradenhead. Plug 4 consisted of 60 sx, 20 sx in 5.5" and 40 sx in 8.6". Rig down all equipment and MOL.
- 2/6/23** Arrived on location and held safety meeting. Used backhoe to safely expose wellhead. Set up welding unit on location. Performed wellhead cutoff. Removed old wellhead. Tagged cement at 7' in 5.5" casing, cement was at surface in 8.6" casing. R/U cementing services and filled 5.5" casing string to surface with 5 sx. Welder attached marker per NMOCD regulations.

**Plug Summary:**

**Plug #1: (San Andres Perforations and Formation Top, 2,588'-1,821', 79 Sacks Type I/II Cement)**

P/U 5.5 CR. TIH and set at 2588". R/U cementing services. Pump plug #1 from 2588' to 1908' with 79 sacks. TOOH. WOC overnight. RIH and tagged Plug #1 at 1821'.

**Plug #2: (Queen Formation Top 1,580-1,270', 66 Sacks Type I/II Cement)**

R/U wireline services. RIH in perforated at 1580'. POOH. Pick up 5.5" packer. TIH and set packer at 1230'. Established injection rate of 4 barrels per minute at 130 psi. R/U cementing services. Pumped plug #2 from 1580' to 1230' with 66 sacks. WOC. TIH and tagged plug #2 at 1270'.

**Plug #3: (Yates Formation Top, 960' to 707', 66 Sacks Type I/II Cement)**

R/U wireline services. RIH and perforated at 960'. POOH. P/U packer. TIH and set at 610'. Established an injection rate of 3 bbls a minute at 250 psi. R/U cementing services. Pumped plug #3 from 960' to 710' with 66 sacks. TOOH. WOC overnight. TIH and tagged plug #3 at 707'.

**Plug #4: (Surface Casing Shoe, 175' to Surface', 65 Sacks Type I/II Cement [5 sx for top off])**

R/U wireline services. RIH and perforated at 175'. POOH. R/U cementing services. Pumped plug #4 from 175' to surface. Circulated cement through Bradenhead. Plug 4 consisted of 60 sx, 20 sx in 5.5"

and 40 sx in 8.6". Performed wellhead cutoff. Removed old wellhead. Tagged cement at 7' in 5.5" casing, cement was at surface in 8.6" casing. R/U cementing services and filled 5.5" casing string to surface with 5 sx. Welder attached marker per NMOCD regulations.

## Completed Wellbore Diagram

Canyon E&P Company  
O'Brien Fee 19 #006  
API: 30-005-60804  
Chaves County, New Mexico

### Surface Casing

8.625" 20# @ 125 ft  
OH: 11"

### Plug 4

175 feet - surface  
175 foot plug  
65 Sacks of Type III Cement

### Plug 3

960 feet - 707 feet  
253 foot plug  
66 Sacks of Type III Cement

### Plug 2

1580 feet - 1270 feet  
310 foot plug  
66 Sacks of Type III Cement

### Plug 1

2588 feet - 1821 feet  
767 foot plug  
77 sacks of Type III Cement

### Formation

Yates - 910 feet  
Queens - 1530 feet  
San Andres - 2008 feet

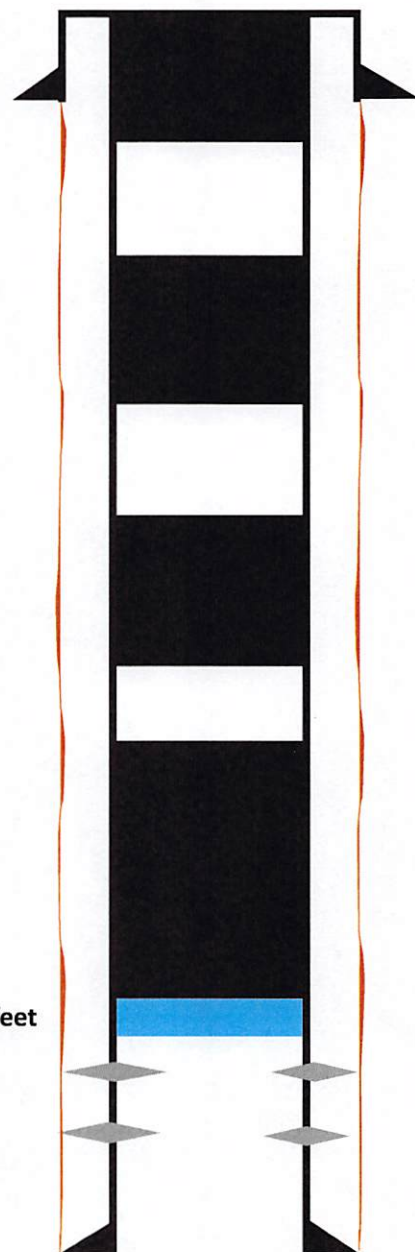
Retainer @ 2588 feet

### Perforations

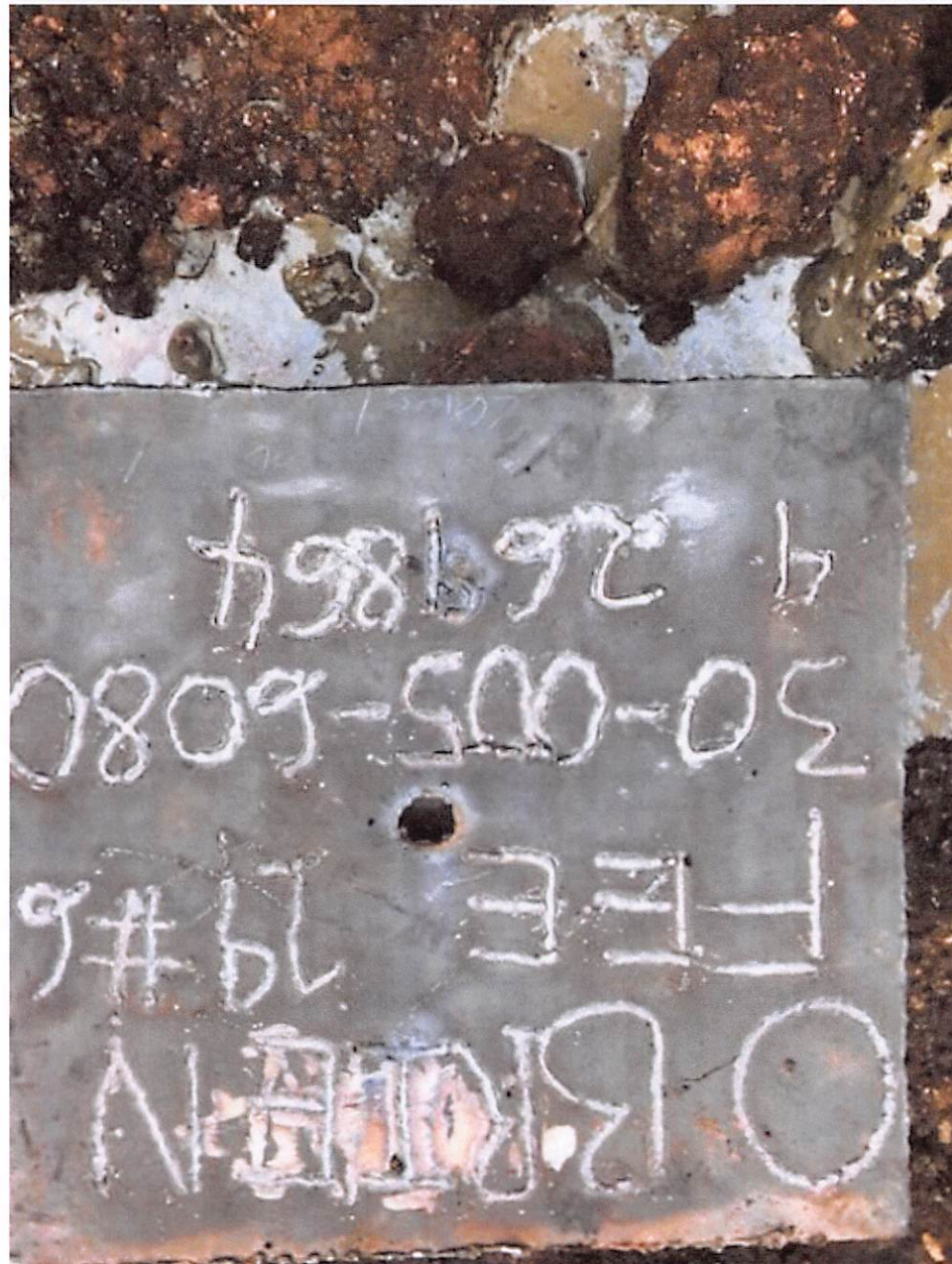
2672 feet - 2638 feet

### Production Casing

5.5" 14# @ 2787 feet  
OH: 7.875













**District I**  
1625 N. French Dr., Hobbs, NM 88240  
Phone:(575) 393-6161 Fax:(575) 393-0720  
**District II**  
811 S. First St., Artesia, NM 88210  
Phone:(575) 748-1283 Fax:(575) 748-9720  
**District III**  
1000 Rio Brazos Rd., Aztec, NM 87410  
Phone:(505) 334-6178 Fax:(505) 334-6170  
**District IV**  
1220 S. St Francis Dr., Santa Fe, NM 87505  
Phone:(505) 476-3470 Fax:(505) 476-3462

State of New Mexico  
Energy, Minerals and Natural Resources  
Oil Conservation Division  
1220 S. St Francis Dr.  
Santa Fe, NM 87505

CONDITIONS  
  
Action 194913

CONDITIONS

Operator: J.A. Drake Well Service Inc. 607 W Pinon Farmington, NM 87401	OGRID: 330485
	Action Number: 194913
	Action Type: [C-103] Sub. Plugging (C-103P)

CONDITIONS

Created By	Condition	Condition Date
john.harrison	None	4/18/2023