

Submit One Copy To Appropriate District
Office

District I

1625 N. French Dr., Hobbs, NM 88240

District II

811 S. First St., Artesia, NM 88210

District III

1000 Rio Brazos Rd., Aztec, NM 87410

District IV

1220 S. St. Francis Dr., Santa Fe, NM
87505

State of New Mexico
Energy, Minerals and Natural Resources

OIL CONSERVATION DIVISION
1220 South St. Francis Dr.
Santa Fe, NM 87505

Form C-103

Revised November 3, 2011

<p>WELL API NO. 30-005-61246</p>	
<p>5. Indicate Type of Lease STATE <input checked="" type="checkbox"/> FEE <input type="checkbox"/></p>	
<p>6. State Oil & Gas Lease No.</p>	
<p>7. Lease Name or Unit Agreement Name O'Brien Fee 18</p>	
<p>8. Well Number 006</p>	
<p>9. OGRID Number 269864</p>	
<p>10. Pool name or Wildcat Twin Lake; San Andres</p>	
<p>SUNDRY NOTICES AND REPORTS ON WELLS (DO NOT USE THIS FORM FOR PROPOSALS TO DRILL OR TO DEEPEN OR PLUG BACK TO A DIFFERENT RESERVOIR. USE "APPLICATION FOR PERMIT" (FORM C-101) FOR SUCH PROPOSALS.)</p>	
<p>1. Type of Well: <input checked="" type="checkbox"/> Oil Well <input type="checkbox"/> Gas Well <input type="checkbox"/> Other</p>	
<p>2. Name of Operator Canyon E&P Company</p>	
<p>3. Address of Operator 251 O'Connor Ridge Blvd, Irving, TX 75038</p>	
<p>4. Well Location Unit Letter <u>J</u> : 1650 feet from the <u>S</u> line and 2310 feet from the <u>E</u> line Section <u>18</u> Township <u>08S</u> Range <u>29E</u> NMPM _____ County <u>Chaves</u></p>	
<p>11. Elevation (Show whether DR, RKB, RT, GR, etc.)</p>	
<p>12. Check Appropriate Box to Indicate Nature of Notice, Report or Other Data</p>	
<p>NOTICE OF INTENTION TO:</p> <p>PERFORM REMEDIAL WORK <input type="checkbox"/> PLUG AND ABANDON <input type="checkbox"/></p> <p>TEMPORARILY ABANDON <input type="checkbox"/> CHANGE PLANS <input type="checkbox"/></p> <p>PULL OR ALTER CASING <input type="checkbox"/> MULTIPLE COMPL <input type="checkbox"/></p> <p>OTHER: <input type="checkbox"/></p>	<p>SUBSEQUENT REPORT OF:</p> <p>REMEDIAL WORK <input type="checkbox"/> ALTERING CASING <input type="checkbox"/></p> <p>COMMENCE DRILLING OPNS. <input type="checkbox"/> P AND A <input checked="" type="checkbox"/></p> <p>CASING/CEMENT JOB <input type="checkbox"/></p> <p><input checked="" type="checkbox"/> Location is ready for OCD inspection after P&A</p>
<p><input checked="" type="checkbox"/> All pits have been remediated in compliance with OCD rules and the terms of the Operator's pit permit and closure plan.</p> <p><input checked="" type="checkbox"/> Rat hole and cellar have been filled and leveled. Cathodic protection holes have been properly abandoned.</p> <p><input checked="" type="checkbox"/> A steel marker at least 4" in diameter and at least 4' above ground level has been set in concrete. It shows the</p>	

OPERATOR NAME, LEASE NAME, WELL NUMBER, API NUMBER, QUARTER/QUARTER LOCATION OR UNIT LETTER, SECTION, TOWNSHIP, AND RANGE. ALL INFORMATION HAS BEEN WELDED OR PERMANENTLY STAMPED ON THE MARKER'S SURFACE.

- ☐ The location has been leveled as nearly as possible to original ground contour and has been cleared of all junk, trash, flow lines and other production equipment.
- ☐ Anchors, dead men, tie downs and risers have been cut off at least two feet below ground level.
- ☐ If this is a one-well lease or last remaining well on lease, the battery and pit location(s) have been remediated in compliance with OCD rules and the terms of the Operator's pit permit and closure plan. All flow lines, production equipment and junk have been removed from lease and well location.
- ☐ All metal bolts and other materials have been removed. Portable bases have been removed. (Poured onsite concrete bases do not have to be removed.)
- ☐ All other environmental concerns have been addressed as per OCD rules.
- ☐ Pipelines and flow lines have been abandoned in accordance with 19.15.35.10 NMAC. All fluids have been removed from non-retrieved flow lines and pipelines.
- ☐ If this is a one-well lease or last remaining well on lease: all electrical service poles and lines have been removed from lease and well location, except for utility's distribution infrastructure.

When all work has been completed, return this form to the appropriate District office to schedule an inspection.

SIGNATURE Ethan Wakefield TITLE Authorized Representative

DATE 2/24/22

TYPE OR PRINT NAME Ethan Wakefield

E-MAIL: e.wakefield@dwsrigs.com

PHONE (405) 343-7736

For State Use Only

APPROVED BY:

Released to Imaging: 4/25/2023 4:25:21 PM

TITLE Petroleum Specialist

DATE 4/18/23

Canyon E&P Company

Plug And Abandonment End Of Well Report

O'Brien Fee 18 #006

1650' FSL & 2310' FEL, Section 18, 08S, 29E

Chaves County, NM / API 30-005-61246

Work Summary:

- 2/15/23** Made BLM and NMOCD P&A operations notifications at 9:00 AM MST.
- 2/16/23** Arrived on location and held safety meeting. Prepared location using backhoe. Removed horses head. R/U P&A rig. Checked well pressures: Tubing 0 psi, Casing: 0 psi, Bradenhead: 0 psi.. Bled down well. N/U BOP and function tested. ND WH, RU floor. Worked stuck tubing. L/D 82 - 2 3/8" joints, SN, 10' perforated sub and 1 - 2 3/8" joint with bull plug. Prep and tallied work string. P/U 5.5" casing scraper. TIH with scraper to 2697'. L/D 2 joints and TOOH. Reworked casing scraper between surface and 90'. Secured and shut in well for the day.
- 2/17/23** Arrived on location and held safety meeting. Checked well pressures: Tubing 0 psi, Casing: 0 psi, Bradenhead: 0 psi. Bled down well. P/U 5.5" CR. TIH and set at 2633'. R/U cementers. Successfully circulated well with 34 bbls, pumped 64 bbls total. Successfully pressure tested casing at 800 psi. TOOH. R/U wireline services. RIH and logged well. R/D wireline. TIH to 2630'. R/U cementing services. Pumped plug #1 from 2630' to 1930'. L/D 22 joints. R/U cementers, reverse circulated at 1911'. Pumped weighted spacer from 1911' to 1621'. L/D 9 joints and TOOH. R/U wireline services. RIH and perforated at 1621'. POOH. Successfully established injection rate. P/U 5.5" packer. TIH and set at 1245'. R/U cementing services. Pumped plug #2 into to perforations at 1621' and up to 1343'. Pressure built up had to wait for pressure to drop off. R/D cementers, unset packer and TOOH. Secured and shut in well for the day.

- 2/18/23** Arrived on location and held safety meeting. Checked well pressures: Tubing 0 psi, Casing: 0 psi, Bradenhead: 0 psi. Bled down well. TIH and tagged top of plug #2 at 1364'. Pumped weighted spacer from 1364' to 965'. L/D 12 joints and TOOH. R/U wireline services. TIH and perforated at 965'. POOH. Attempted to get injection rate but was unsuccessful. TIH to 1021'. R/U cementing services. Pumped plug #3 from 1021' to approximately 715'. R/D cementing services. L/D 10 joints and TOOH. WOC 4 hours. TIH and tagged top of plug #3 at 733'. Pumped mug/gel spacer from 733' to 160'. L/D tubing. R/U wireline services. RIH and perforated at 160'. POOH. Successfully got circulation down 5.5" casing, into perforations at 160' and out BH at surface. R/U cementing services. Pumped plug #1 down 5.5" casing into perforations at 160' and out BH valve at surface. RD cementers. RD floor, ND BOP, NU WH. RD unit. MOL.
- 2/23/23** Arrived on location and held safety meeting. Used backhoe to safely expose wellhead. Set up welding unit on location. Performed wellhead cutoff. Removed old wellhead. Tagged cement at 20' in 5.5" casing, and at 1' in 8.6" casing. R/U cementing services and filled 5.5" and 8.6" casing strings to surface with 10 sx. Welder attached marker per NMOCD regulations.

Plug Summary:

Plug #1: (San Andres Perforations and Formation Top, 2,630'-1,930', 82 Sacks Type I/II Cement)

P/U 5.5" CR. TIH and set at 2633'. R/U cementers. Successfully circulated well with 34 bbls, pumped 64 bbls total. Successfully pressure tested casing at 800 psi. TOOH. R/U wireline services. RIH and logged well. R/D wireline. TIH to 2630'. R/U cementing services. Pumped plug #1 from 2630' to 1930'. L/D 22 joints. R/U cementers, reverse circulated at 1911'.

Plug #2: (Queen Formation Top 1,621'-1,364', 66 Sacks Type I/II Cement)

R/U wireline services. RIH and perforated at 1621'. POOH. Successfully established injection rate. P/U 5.5" packer. TIH and set at 1245'. R/U cementing services. Pumped plug #2 into to perforations at 1621' and up to 1343' (29 in 5.5", 37 outside). WOC. TIH and tagged top of plug #2 at 1364'.

Plug #3: (Yates Formation Top, 1021' to 733', 53 Sacks Type I/II Cement)

R/U wireline services. TIH and perforated at 965'. POOH. Attempted to get injection rate but was unsuccessful. TIH to 1021'. R/U cementing services. Pumped plug #3 from 1021' to approximately 715'. R/D cementing services. L/D 10 joints and TOOH. WOC 4 hours. TIH and tagged top of plug #3 at 733'.

Plug #4: (Surface Casing Shoe, 160' to Surface', 74 Sacks (19 sx in 5.5", 45 sx in 8.6") Type I/II Cement [10 sx for top off])

R/U wireline services. RIH and perforated at 160'. POOH. Successfully got circulation down 5.5" casing, into perforations at 160' and out BH at surface. R/U cementing services. Pumped plug #1 down 5.5" casing into perforations at 160' and out BH valve at surface. Used backhoe to safely expose wellhead. Set up welding unit on location. Performed wellhead cutoff. Removed old wellhead. Tagged cement at 20' in 5.5" casing, and at 1' in 8.6" casing. R/U cementing services and filled 5.5" and 8.6" casing strings to surface with 10 sx. Welder attached marker per NMOCD regulations.

Completed Wellbore Diagram

Canyon E&P Company
O'Brien Fee 18 #006
API: 30-005-61246
Chaves County, New Mexico

Surface Casing

8.625" 20# @ 110 ft
OH: 11.5"

Formation

Yates - 915 feet
Queens - 1474 feet
San Andres - 2030 feet

Plug 4

160 feet - surface
160 foot plug
74 Sacks of Type III Cement

Plug 3

1021 feet - 733 feet
257 foot plug
53 Sacks of Type III Cement

Plug 2

1621 feet - 1364 feet
257 foot plug
66 Sacks of Type III Cement

Plug 1

2630 feet - 1930 feet
700 foot plug
82 sacks of Type III Cement

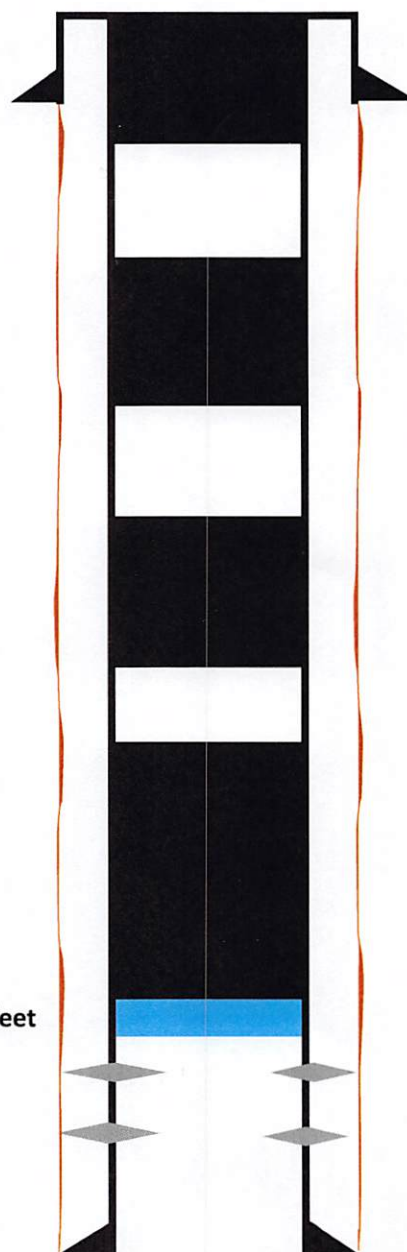
Perforations

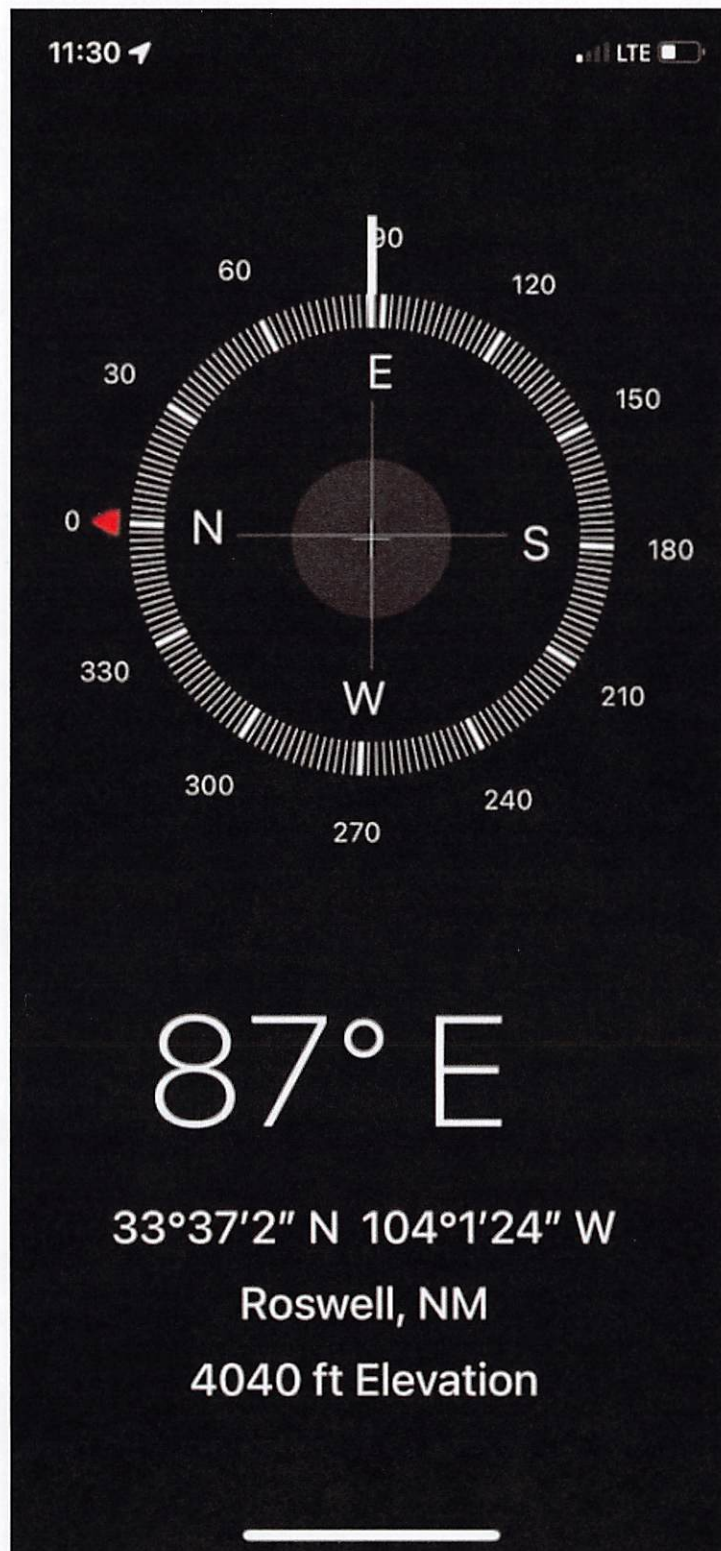
2686 feet - 2707 feet

Retainer @ 2633 feet

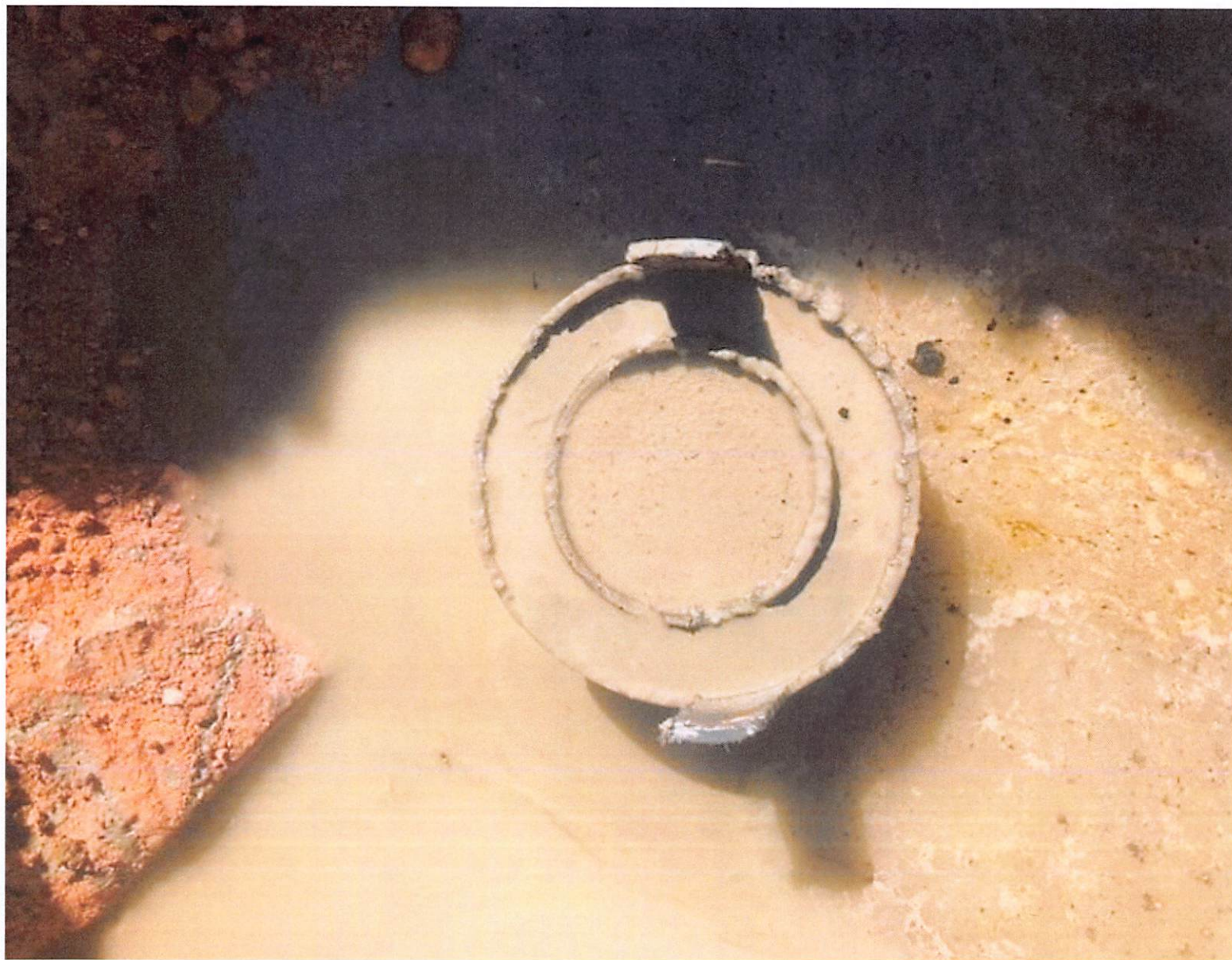
Production Casing

5.5" 14# @ 2814 feet
OH: 7.875











District I
1625 N. French Dr., Hobbs, NM 88240
Phone:(575) 393-6161 Fax:(575) 393-0720
District II
811 S. First St., Artesia, NM 88210
Phone:(575) 748-1283 Fax:(575) 748-9720
District III
1000 Rio Brazos Rd., Aztec, NM 87410
Phone:(505) 334-6178 Fax:(505) 334-6170
District IV
1220 S. St Francis Dr., Santa Fe, NM 87505
Phone:(505) 476-3470 Fax:(505) 476-3462

State of New Mexico
Energy, Minerals and Natural Resources
Oil Conservation Division
1220 S. St Francis Dr.
Santa Fe, NM 87505

CONDITIONS

Action 194893

CONDITIONS

Operator: J.A. Drake Well Service Inc. 607 W Pinon Farmington, NM 87401	OGRID: 330485
	Action Number: 194893
	Action Type: [C-103] Sub. Plugging (C-103P)

CONDITIONS

Created By	Condition	Condition Date
john.harrison	None	4/18/2023