

Submit 1 Copy To Appropriate District Office
 District I – (575) 393-6161
 1625 N. French Dr., Hobbs, NM 88240
 District II – (575) 748-1283
 811 S. First St., Artesia, NM 88210
 District III – (505) 334-6178
 1000 Rio Brazos Rd., Aztec, NM 87410
 District IV – (505) 476-3460
 1220 S. St. Francis Dr., Santa Fe, NM 87505

State of New Mexico
 Energy, Minerals and Natural Resources

Form C-103
 Revised July 18, 2013

OIL CONSERVATION DIVISION
 1220 South St. Francis Dr.
 Santa Fe, NM 87505

SUNDRY NOTICES AND REPORTS ON WELLS (DO NOT USE THIS FORM FOR PROPOSALS TO DRILL OR TO DEEPEN OR PLUG BACK TO A DIFFERENT RESERVOIR. USE "APPLICATION FOR PERMIT" (FORM C-101) FOR SUCH PROPOSALS.)		WELL API NO. 30-005-60596
1. Type of Well: Oil Well <input checked="" type="checkbox"/> Gas Well <input type="checkbox"/> Other <input type="checkbox"/>		5. Indicate Type of Lease STATE <input checked="" type="checkbox"/> FEE <input type="checkbox"/>
2. Name of Operator Blue Sky NM Inc.		6. State Oil & Gas Lease No.
3. Address of Operator 7941 Katy Freeway Suite 522 Houston, TX 77024		7. Lease Name or Unit Agreement Name Twin Lakes San Andres Unit
4. Well Location Unit Letter <u>K</u> <u>1650</u> feet from the <u>S</u> line and <u>1650</u> feet from the <u>W</u> line Section <u>30</u> Township <u>08S</u> Range <u>29E</u> NMPM County Chaves		8. Well Number <u>006</u>
11. Elevation (Show whether DR, RKB, RT, GR, etc.)		9. OGRID Number 300825
		10. Pool name or Wildcat Cato; San Andres

12. Check Appropriate Box to Indicate Nature of Notice, Report or Other Data

NOTICE OF INTENTION TO:		SUBSEQUENT REPORT OF:	
PERFORM REMEDIAL WORK <input type="checkbox"/>	PLUG AND ABANDON <input type="checkbox"/>	REMEDIAL WORK <input type="checkbox"/>	ALTERING CASING <input type="checkbox"/>
TEMPORARILY ABANDON <input type="checkbox"/>	CHANGE PLANS <input type="checkbox"/>	COMMENCE DRILLING OPNS. <input type="checkbox"/>	P AND A <input checked="" type="checkbox"/>
PULL OR ALTER CASING <input type="checkbox"/>	MULTIPLE COMPL. <input type="checkbox"/>	CASING/CEMENT JOB <input type="checkbox"/>	
DOWNHOLE COMMINGLE <input type="checkbox"/>			
CLOSED-LOOP SYSTEM <input type="checkbox"/>			
OTHER: <input type="checkbox"/>		OTHER: <input type="checkbox"/>	

13. Describe proposed or completed operations. (Clearly state all pertinent details, and give pertinent dates, including estimated date of starting any proposed work). SEE RULE 19.15.7.14 NMAC. For Multiple Completions: Attach wellbore diagram of proposed completion or recompletion.

NMOCD plugged well according to attached EOW files and wellbore diagram.

Spud Date:

Rig Release Date:

I hereby certify that the information above is true and complete to the best of my knowledge and belief.

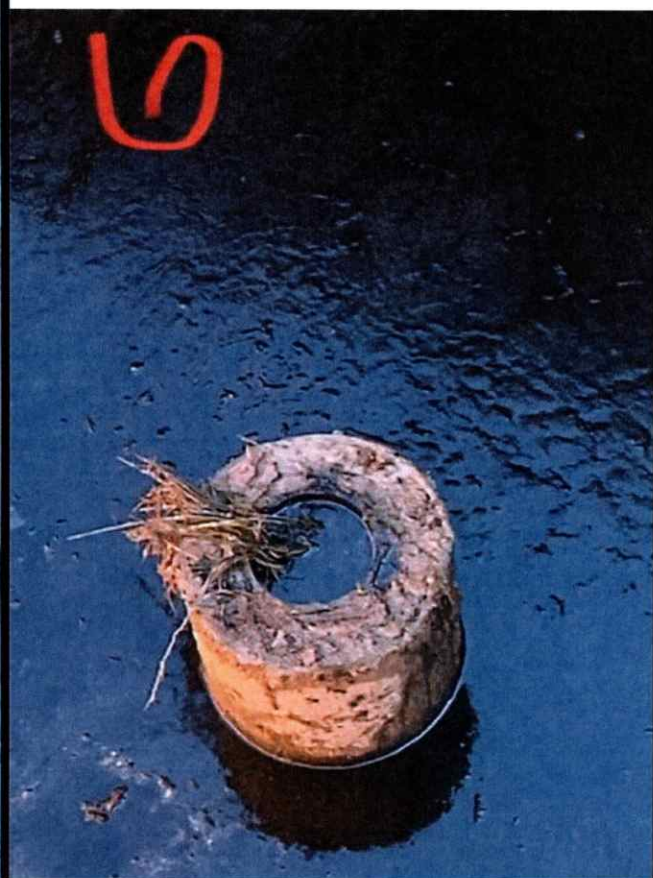
SIGNATURE _____ TITLE Authorized Representative _____ DATE 10/31/22

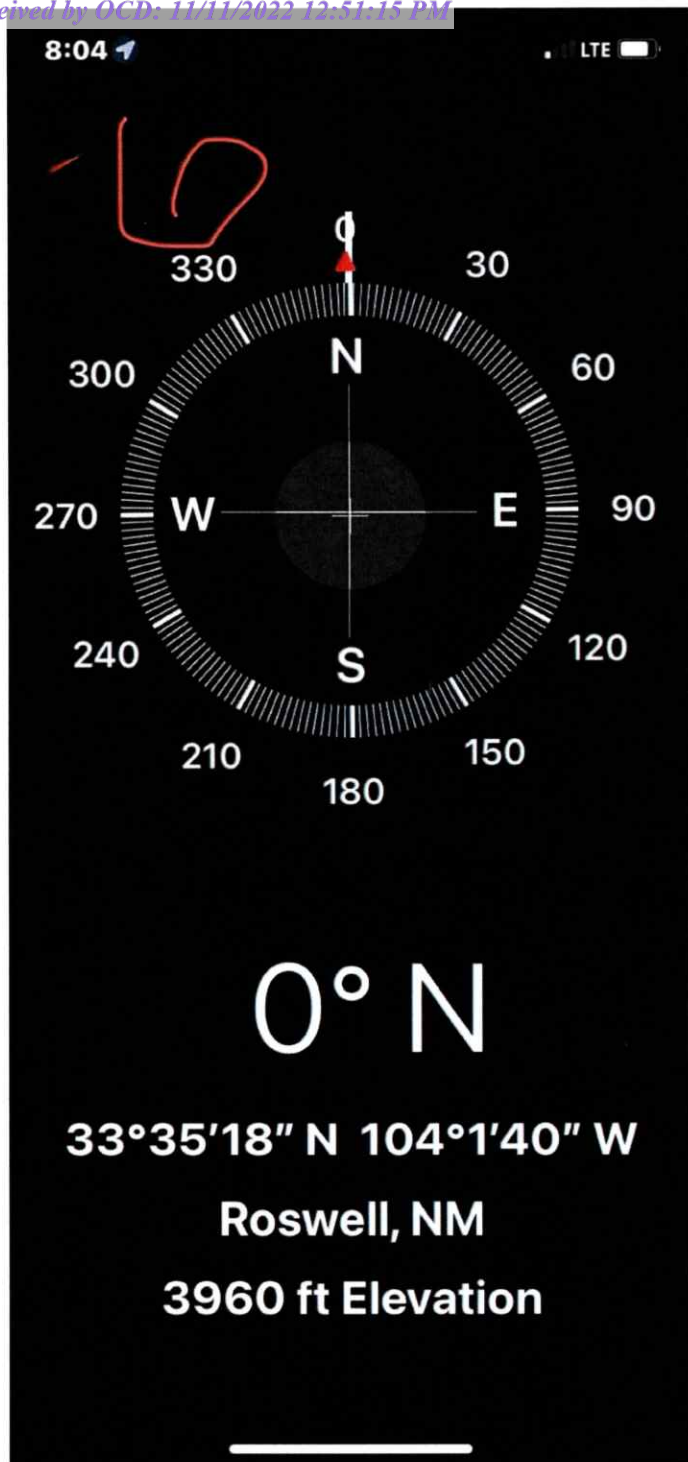
Type or print name Drake McCulloch _____ E-mail address: drake@dwsrigs.com _____ PHONE: 505 320 1180

For State Use Only

APPROVED BY: _____ TITLE _____ DATE _____
 Conditions of Approval (if any):

Accepted for record – NMOCD
 JRH 05/03/2023





Blue Sky NM, INC.

Plug And Abandonment End Of Well Report

Twin Lakes San Andres Unit #006

1650' FSL & 1650' FWL, Section 30, 08S, 29E

Chaves County, NM / API 30-005-60596

Work Summary:

- 10/15/22** Made BLM and NMOCD P&A operations notifications at 9:00 AM MST.
- 10/16/22** Arrived on location and held safety meeting. R/U P&A rig. Checked well pressures: Tubing 0 psi, Casing: 145 psi, Bradenhead: 0 psi. Bled down well. N/D wellhead. N/U BOP and function tested. Round tripped with casing scraper. P/U CR. TIH and set CR at 2594'. Circulated the hole with 43 bbls. Successfully pressure tested casing. R/U cementing services. Pumped plug #1 from 2594' to 1900' to cover the San Andres perforations and formation top. TOOH. WOC 4 hours. R/U wireline services. RIH and logged well. POOH. TIH and tagged top of plug #1 at 1985'. R/U cementing services. Continued pumping plug #1 from 1985' to 1850'. TOOH. WOC overnight. Secured and shut in well for the day.
- 10/17/22** Arrived on location and held safety meeting. Checked well pressures: Tubing 0 psi, Casing: 0 psi, Bradenhead: 0 psi. Bled down well. TIH and tagged the top of plug #1 at 1820'. TOOH. R/U wireline services. RIH and perforated at 1540'. POOH. P/U packer. TIH and set packer at 1065'. Successfully established an injection rate. R/U cementing services. Pumped plug #2 from 1540' to 1165' with 68 sx in the annulus and 25 sx in the 4.5" casing. Plug #2 will cover the Queen formation top. TOOH with packer. WOC 4 hours. TIH and tagged to of plug #2 at 1111'. TOOH. R/U wireline services. RIH and perforated at 822'. Successfully established injection rate. P/U packer. TIH and set packer at 347'. R/U cementing services and pumped plug #3 from 822' to 447' to cover the Yates formation top.

Plug 3 consisted of 68 sx in the annulus and 25 sx in the 4.5" casing. TOOH with packer. WOC overnight. Secured and shut in well for the day.

- 10/18/22** Arrived on location and held safety meeting. Checked well pressures: Tubing 0 psi, Casing: 0 psi, Bradenhead: 0 psi. Bled down well. TIH and tagged top of plug #3 at 395'. TOOH. R/U wireline services. RIH and perforated at 171'. POOH. P/U packer. TIH and set packer at 100'. Successfully established an injection rate. TOOH with packer. TIH open ended. R/U cementing services. Began pumping plug #4 but pressured up to 1000 psi. TOOH. R/U wireline services. RIH and perforated at 110'. POOH. TIH with tubing. Successfully pumped plug #4 from 171' to surface to cover the surface casing shoe. Pumped 70 sx total, 59 sx in the annulus and 11 sx in the 4.5" casing. TOOH. Nipple down tongs, floor, BOP. R/D P&A rig and prepare to MOL.
- 10/19/22** Arrived on location and held safety meeting. Used backhoe to safely expose wellhead. R/U water jet wellhead cutter. Preformed water jet cutoff. Removed old wellhead. Tagged cement at 17' in 4.5" casing and at 25' in annulus. R/U cementing services. Topped off 4.5" with .8 sx and topped off annulus with 1.6 sx. Welder attached marker per NMOCD regulations.

Plug Summary:

Plug #1: (San Andres Perforations and Formation Top, 2,594'-1,820', 55 Sacks Type III Cement)

P/U CR. TIH and set CR at 2594'. Circulated the hole with 43 bbls. Successfully pressure tested casing. R/U cementing services. Pumped plug #1 from 2594' to 1900' to cover the San Andres perforations and formation top. TOOH. WOC 4 hours. TIH and tagged top of plug #1 at 1985'. R/U cementing services. Continued pumping plug #1 from 1985' to 1850'. TOOH. WOC overnight. TIH and tagged the top of plug #1 at 1820'.

Plug #2: (Queen Formation Top 1,540-1111', 93 Sacks Type III Cement)

R/U wireline services. RIH and perforated at 1540'. POOH. P/U packer. TIH and set packer at 1065'. Successfully established an injection rate. R/U cementing services. Pumped plug #2 from 1540' to 1165' with 68 sx in the annulus and 25 sx in the 4.5" casing. Plug #2 will cover the Queen formation top. TOOH with packer. WOC 4 hours. TIH and tagged to of plug #2 at 1111'.

Plug #3: (Yates Formation Top, 822' to 338', 93 Sacks Type III Cement)

R/U wireline services. RIH and perforated at 822'. Successfully established injection rate. P/U packer. TIH and set packer at 347'. R/U cementing services and pumped plug #3 from 822' to 447' to cover the Yates formation top. Plug 3 consisted of 68 sx in the annulus and 25 sx in the 4.5" casing. TOOH with packer. WOC overnight. TIH and tagged top of plug #3 at 395'.

Plug #4: (Surface Casing Shoe, 171' to Surface', 73 Sacks Type III Cement [3 sx for top off])

R/U wireline services. RIH and perforated at 171'. POOH. P/U packer. TIH and set packer at 100'. Successfully established an injection rate. TOOH with packer. TIH open ended. R/U cementing services. Began pumping plug #4 but pressured up to 1000 psi. TOOH. R/U wireline services. RIH and perforated at 110'. POOH. TIH with tubing. Successfully pumped plug #4 from 171' to surface to cover the surface casing shoe. Pumped 70 sx total, 59 sx in the annulus and 11 sx in the 4.5" casing. R/U water jet wellhead cutter. Preformed water jet cutoff. Removed old wellhead. Tagged cement at 17' in 4.5" casing and at 25' in annulus. R/U cementing services. Topped off 4.5" with .8 sx and topped off annulus with 1.6 sx. Welder attached marker per NMOCD regulations.

Completed Wellbore Diagram

Blue Sky NM Inc.
Twin Lakes San Andres Unit #006
API: 30-005-60596
Chaves County, New Mexico

Surface Casing

8.625" 20# @ 121 ft
OH: 12.5'

Plug 4

171 feet - surface
171 foot plug
55 Sacks of Type III Cement

Plug 3

822 feet - 395 feet
427 foot plug
93 Sacks of Type III Cement

Plug 2

1540 feet - 1111 feet
429 foot plug
93 Sacks of Type III Cement

Plug 1

2594 feet - 1850 feet
744 foot plug
55 sacks of Type III Cement

Perforations

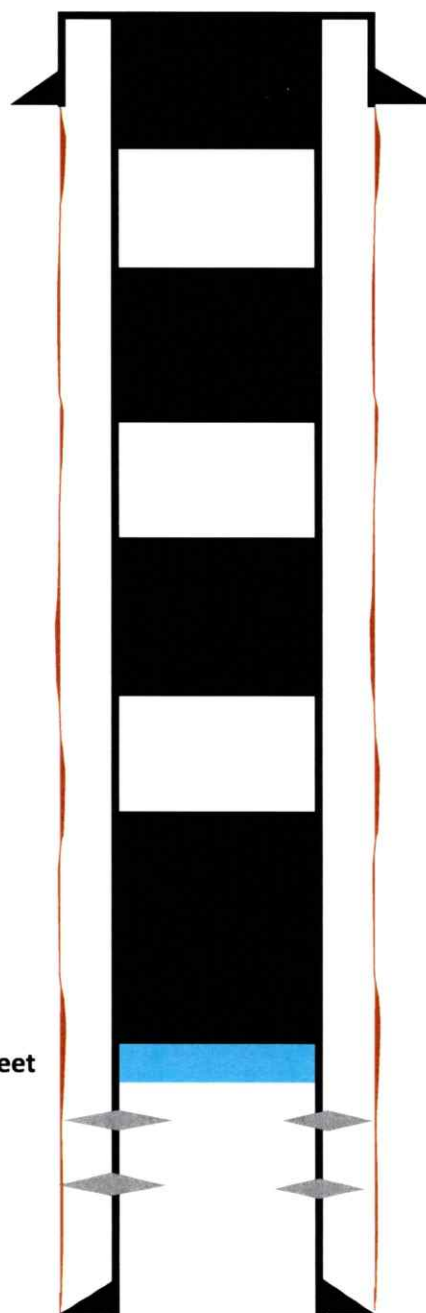
2625 feet - 2660 feet

Formation

Yates - 772 feet
Queen - 1490 feet
San Andres - 2000 feet

Retainer @ 2594 feet

Production Casing
4.5" 9.5# @ 2870 feet
OH: 7.875"



District I
1625 N. French Dr., Hobbs, NM 88240
Phone:(575) 393-6161 Fax:(575) 393-0720
District II
811 S. First St., Artesia, NM 88210
Phone:(575) 748-1283 Fax:(575) 748-9720
District III
1000 Rio Brazos Rd., Aztec, NM 87410
Phone:(505) 334-6178 Fax:(505) 334-6170
District IV
1220 S. St Francis Dr., Santa Fe, NM 87505
Phone:(505) 476-3470 Fax:(505) 476-3462

State of New Mexico
Energy, Minerals and Natural Resources
Oil Conservation Division
1220 S. St Francis Dr.
Santa Fe, NM 87505

CONDITIONS

Action 158205

CONDITIONS

Operator: J.A. Drake Well Service Inc. 607 W Pinon Farmington, NM 87401	OGRID: 330485
	Action Number: 158205
	Action Type: [C-103] Sub. Plugging (C-103P)

CONDITIONS

Created By	Condition	Condition Date
john.harrison	None	5/3/2023