

Well Name: FEDERAL 30	Well Location: T19S / R33E / SEC 30 / NESE /	County or Parish/State: LEA / NM
Well Number: 1	Type of Well: CONVENTIONAL GAS WELL	Allottee or Tribe Name:
Lease Number: NMNM073240	Unit or CA Name: FEDERAL 30	Unit or CA Number: NMNM72199
US Well Number: 3002527069	Well Status: Abandoned	Operator: MATADOR PRODUCTION COMPANY

Subsequent Report

Sundry ID: 2682807

Type of Submission: Subsequent Report	Type of Action: Plug and Abandonment
Date Sundry Submitted: 07/19/2022	Time Sundry Submitted: 12:40
Date Operation Actually Began: 06/27/2022	

**Actual Procedure:** 6/9/22: MIRU WOR, ND WH. Lay down rods & pump. NU & test BOPs. 6/13/22: Fish parted tubing. 6/14/22: Tag @ 7,793’ TM w/ bit & scrapper (communicated with BLM) 6/15/22: Set CIBP @ 7,745’ WLM. 6/16/22: Spot 35 sk plug of Class “H” cmt on top of CIBP; WOC & tag TOC at 7,142’ TM; Circulate MLF (25 sxs/100 bbls); PU & spot 35 sk plug of Class “C” cmt at 5,400’ TM; WOC. 6/17/22: Tag TOC @ 4,864’ TM; PU and gravity squeeze 65 sks Class “C” cmt with tubing at 3,589’ TM; WOC & tag TOC @ 3,344’ TM; Test casing, no test. PU and gravity squeeze 65 sks Class “C” cmt at 3,159’ TM; WOC. 6/18/22: Tag TOC @ 3,067’ TM; Pressure test casing to 500 psi, good test. POOH. WL Perf @ 2,250’ WLM; TIH & gravity squeeze 105 sks Class “C” cmt; WOC, no tag. Gravity squeeze 110 sks Class “C” cmt, WOC. 6/19/22: Tag TOC @ 1,622’ TM; POOH; Perf @ 1,600’ SLM, Gravity squeeze 520 sks Class “C” cmt, circulate cement to surface. 6/27/22: Dig out cellar; cut off wellhead 3’ B.G.L.; top off surface casing with Class “C” cmt; weld on steel plate & install dry hole marker per BLM/NMOCD standards. Spud Date: 6/19/1981 Wellhead removal: 6/27/22

SR Attachments

Actual Procedure

Federal\_30\_\_001\_DryHole\_Marker\_20220719124006.jpg

Federal\_30\_\_1\_\_As\_Plugged\_WBD\_7.14.22\_20220719123959.pdf

Accepted for record – NMOCD

JRH      05/03/2023

<b>Well Name:</b> FEDERAL 30	<b>Well Location:</b> T19S / R33E / SEC 30 / NESE /	<b>County or Parish/State:</b> LEA / NM
<b>Well Number:</b> 1	<b>Type of Well:</b> CONVENTIONAL GAS WELL	<b>Allottee or Tribe Name:</b>
<b>Lease Number:</b> NMNM073240	<b>Unit or CA Name:</b> FEDERAL 30	<b>Unit or CA Number:</b> NMNM72199
<b>US Well Number:</b> 3002527069	<b>Well Status:</b> Abandoned	<b>Operator:</b> MATADOR PRODUCTION COMPANY

Operator

I certify that the foregoing is true and correct. Title 18 U.S.C. Section 1001 and Title 43 U.S.C. Section 1212, make it a crime for any person knowingly and willfully to make to any department or agency of the United States any false, fictitious or fraudulent statements or representations as to any matter within its jurisdiction. Electronic submission of Sundry Notices through this system satisfies regulations requiring a

**Operator Electronic Signature:** BRETT JENNINGS  
**Signed on:** JUL 19, 2022 12:40 PM  
**Name:** MATADOR PRODUCTION COMPANY  
**Title:** Regulatory Analyst  
**Street Address:** 5400 LBJ FREEWAY, STE 1500  
**City:** DALLAS **State:** TX  
**Phone:** (972) 629-2160  
**Email address:** BRETT.JENNINGS@MATADORRESOURCES.COM

Field

**Representative Name:**  
**Street Address:**  
**City:** **State:** **Zip:**  
**Phone:**  
**Email address:**

BLM Point of Contact

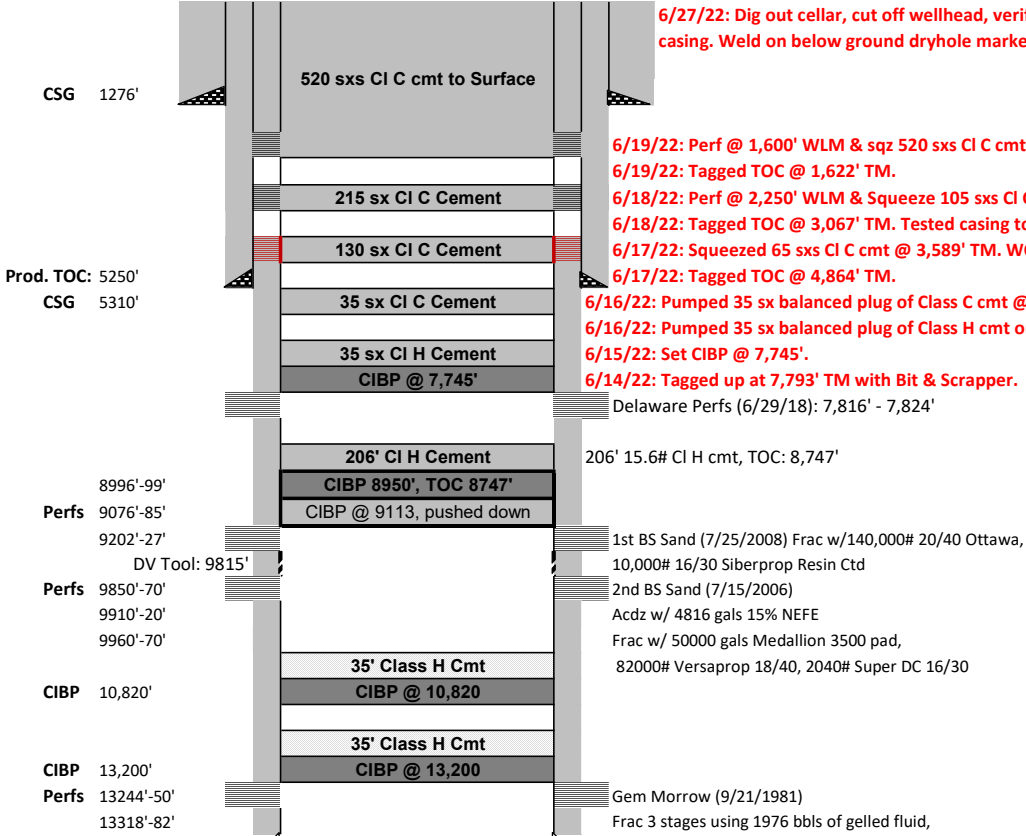
**BLM POC Name:** JAMES A AMOS  
**BLM POC Phone:** 5752345927  
**Disposition:** Accepted  
**Signature:** James A. Amos  
**BLM POC Title:** Acting Assistant Field Manager  
**BLM POC Email Address:** jamos@blm.gov  
**Disposition Date:** 08/01/2022

6/9/22: MIRU WOR, ND WH. Lay down rods & pump. NU & test BOPs. 6/13/22: Fish parted tubing.  
6/14/22: Tag @ 7,793' TM w/ bit & scrapper (communicated with BLM) 6/15/22: Set CIBP @ 7,745' WLM.  
6/16/22: Spot  
35 sk plug of Class "H" cmt on top of CIBP; WOC & tag TOC at 7,142' TM; Circulate MLF (25 sxs/100  
bbls); PU & spot  
35 sk plug of Class "C" cmt at 5,400' TM; WOC. 6/17/22: Tag TOC @ 4,864' TM; PU and gravity squeeze  
65 sks Class  
"C" cmt with tubing at 3,589' TM; WOC & tag TOC @ 3,344' TM; Test casing, no test. PU and gravity  
squeeze 65 sks  
Class "C" cmt at 3,159' TM; WOC. 6/18/22: Tag TOC @ 3,067' TM; Pressure test casing to 500 psi, good  
test. POOH.  
WL Perf @ 2,250' WLM; TIH & gravity squeeze 105 sks Class "C" cmt; WOC, no tag. Gravity squeeze  
110 sks Class "C"  
cmt, WOC. 6/19/22: Tag TOC @ 1,622' TM; POOH; Perf @ 1,600' SLM, Gravity squeeze 520 sks Class  
"C" cmt,  
circulate cement to surface. 6/27/22: Dig out cellar; cut off wellhead 3' B.G.L.; top off surface casing with  
Class "C" cmt;  
weld on steel plate & install dry hole marker per BLM/NMOCD standards. Spud Date: 6/19/1981  
Wellhead removal:  
6/27/22

Matador Production Company  
Federal 30 #1  
1980' FSL & 760' FEL Sec 30 - 19S - 33E  
Lea County, NM  
API: 30-025-27069

As Plugged WBD

Plugged: 6/27/22 (Joe Balderaz - BLM Rep)



Casing Information						
	Casing Size	Weight lb/ft	Depth Set	Hole Size	Cementing Record	
Surface	13 3/8	48# H40 ST&C	1276'	17 1/2	975 sx Class "C"	
Intermediate	9 5/8	76 jts 36# K55 & 50 jts 40# K55	5310'	12 1/4	3440 sx Halib. Lite	
Production	5 1/2	230 jts 17# K55, N80 & 90 jts 20# N80	13712'	8 3/4	2150 sx Halib. Lite (TOC @ 5250)	
Production Casing						
	Prod. Casing	Weight	Joints	Length	Top	Bottom
Top	N-80 Buttress	17#	64	2665		2640
	X-over	17#	1	42	2640	2682
	K-55 ST&C	17#	166	6985	2682	9666
	N-80 ST&C	20#	3	124	9666	9791
	DV Tool			3	9791	9794
	N-80 ST&C	20#	87	3876	9794	13670
	Float Collar			2	13670	13672
	N-80 ST&C	20#	1	39	13672	13711
Bottom	Guide Shoe			1	13711	13712

Geologic Markers	
Salt	370'
Salt	1430'
Yates	1570'
Capitan	1990'
San Andres	2200'
Delaware Sand	5340'
Bone Springs	7880'
Wolfcamp	10818'
Cisco	11752'
Strawn	12078'
Atoka	12410'
Atoka Ls.	12748'
Morrow Ls.	12916'
Morrow Clastic	13015'
T.D.	13712'

**District I**  
1625 N. French Dr., Hobbs, NM 88240  
Phone:(575) 393-6161 Fax:(575) 393-0720  
**District II**  
811 S. First St., Artesia, NM 88210  
Phone:(575) 748-1283 Fax:(575) 748-9720  
**District III**  
1000 Rio Brazos Rd., Aztec, NM 87410  
Phone:(505) 334-6178 Fax:(505) 334-6170  
**District IV**  
1220 S. St Francis Dr., Santa Fe, NM 87505  
Phone:(505) 476-3470 Fax:(505) 476-3462

State of New Mexico  
Energy, Minerals and Natural Resources  
Oil Conservation Division  
1220 S. St Francis Dr.  
Santa Fe, NM 87505

CONDITIONS

Action 130547

CONDITIONS

Operator: MATADOR PRODUCTION COMPANY One Lincoln Centre Dallas, TX 75240	OGRID: 228937
	Action Number: 130547
	Action Type: [C-103] Sub. Plugging (C-103P)

CONDITIONS

Created By	Condition	Condition Date
john.harrison	None	5/3/2023