

Submit 1 Copy To Appropriate District Office  
 District I - (575) 393-6161  
 1625 N. French Dr., Hobbs, NM 88240  
 District II - (575) 748-1283  
 811 S. First St., Artesia, NM 88210  
 District III - (505) 334-6178  
 1000 Rio Brazos Rd., Aztec, NM 87410  
 District IV - (505) 476-3460  
 1220 S. St. Francis Dr., Santa Fe, NM 87505

State of New Mexico  
 Energy, Minerals and Natural Resources

OIL CONSERVATION DIVISION  
 1220 South St. Francis Dr.  
 Santa Fe, NM 87505

Form *Page 1 of 9*  
 Revised July 18, 2013

SUNDRY NOTICES AND REPORTS ON WELLS (DO NOT USE THIS FORM FOR PROPOSALS TO DRILL OR TO DEEPEN OR PLUG BACK TO A DIFFERENT RESERVOIR. USE "APPLICATION FOR PERMIT" (FORM C-101) FOR SUCH PROPOSALS.)		WELL API NO. 30-005-62806
1. Type of Well: Oil Well <input type="checkbox"/> Gas Well <input checked="" type="checkbox"/> Other		5. Indicate Type of Lease STATE <input checked="" type="checkbox"/> FEE <input type="checkbox"/>
2. Name of Operator GREAT WESTERN DRILLING COMPANY		6. State Oil & Gas Lease No. V-3354
3. Address of Operator P.O. BOX 1659 MIDLAND, TX 79702		7. Lease Name or Unit Agreement Name QUAIL STATE
4. Well Location Unit Letter A : 660 feet from the NORTH line and 660 feet from the EAST line Section 36 Township 6S Range 24E NMPM County CHAVES		8. Well Number 1
11. Elevation (Show whether DR, RKB, RT, GR, etc.) 3869 GR		9. OGRID Number 009338
		10. Pool name or Wildcat PECOS SLOPE; ABO (GAS)

12. Check Appropriate Box to Indicate Nature of Notice, Report or Other Data

NOTICE OF INTENTION TO:		SUBSEQUENT REPORT OF:	
PERFORM REMEDIAL WORK <input type="checkbox"/>	PLUG AND ABANDON <input checked="" type="checkbox"/>	REMEDIAL WORK <input type="checkbox"/>	ALTERING CASING <input type="checkbox"/>
TEMPORARILY ABANDON <input type="checkbox"/>	CHANGE PLANS <input type="checkbox"/>	COMMENCE DRILLING OPNS. <input type="checkbox"/>	P AND A <input checked="" type="checkbox"/>
PULL OR ALTER CASING <input type="checkbox"/>	MULTIPLE COMPL <input type="checkbox"/>	CASING/CEMENT JOB <input type="checkbox"/>	
DOWNHOLE COMMINGLE <input type="checkbox"/>			
CLOSED-LOOP SYSTEM <input type="checkbox"/>			
OTHER: <input type="checkbox"/>		OTHER: <input type="checkbox"/>	

13. Describe proposed or completed operations. (Clearly state all pertinent details, and give pertinent dates, including estimated date of starting any proposed work). SEE RULE 19.15.7.14 NMAC. For Multiple Completions: Attach wellbore diagram of proposed completion or recompletion.

4/10/23 Made BLM & NMOCD P&A operations notifications at 9:00 AM MST.

4/11/23 Arrived on location & held safety meeting. Prepared location using backhoe. Moved equipment onto location. RU P&A rig. Secured & shut in well for the day.

4/12/23 Arrived on location & held safety meeting. ND WH, NU BOP, RU floor. Worked tubing string. LD 117 joints of 2-3/8" tubing, & SN. Prep & tallied 2-3/8" work string. PU 4.5" scraper. TIH to 3485'. TOO. Remove scraper & install 4.5" CR. TIH & set CR at 3414'. Successfully circulated hole with 45 bbls, pumped 55 bbls total. Successfully pressure tested casing to 800 psi. TOO. RU wireline services. RIH & logged well. RD wireline services. TIH with tubing to 3410'. RU cementing services. Pumped plug #1 from 3410' to 3050'. RD cementers. L/D 13 joints & TOO. WOC overnight. Secured & shut in well.

4/13/23 Arrived on location & held safety meeting. Checked well pressures: Tubing 0 psi, Casing: 0 psi, Bradenhead: 0 psi. Bled down well. TIH & tagged TOC at 3028'. Pumped mud/gel spacer from 3028' to 2220'. RD cementers. LD 27 joints. RU cementing services. Pumped plug #2 from 2220' to 1876'. RD cementers. LD 11 joints. Reverse circulated at 1882' & TOO. RU wireline services. RIH & perforated at 1876'. RD wireline. Successfully established an injection rate. TIH with 4.5" packer, but packer would not set. TOO. PU new packer. TIH & set at 1604' with EOT at 1696'. R/U cementing services.

Spud Date: 04/05/1991

Rig Release Date: 4/14/23

I hereby certify that the information above is true and complete to the best of my knowledge and belief.

SIGNATURE  TITLE PRODUCTION TECHNICIAN DATE 05/08/23

Type or print name GINA KING E-mail address: gking@gwdc.com PHONE: (432)682-5241

**For State Use Only**

APPROVED BY: \_\_\_\_\_ TITLE \_\_\_\_\_ DATE \_\_\_\_\_  
 Conditions of Approval (if any): \_\_\_\_\_



Submit 1 Copy To Appropriate District Office  
 District I - (575) 393-6161  
 1625 N. French Dr., Hobbs, NM 88240  
 District II - (575) 748-1283  
 811 S. First St., Artesia, NM 88210  
 District III - (505) 334-6178  
 1000 Rio Brazos Rd., Aztec, NM 87410  
 District IV - (505) 476-3460  
 1220 S. St. Francis Dr., Santa Fe, NM 87505

State of New Mexico  
 Energy, Minerals and Natural Resources

OIL CONSERVATION DIVISION  
 1220 South St. Francis Dr.  
 Santa Fe, NM 87505

Revised July 18, 2013

SUNDRY NOTICES AND REPORTS ON WELLS (DO NOT USE THIS FORM FOR PROPOSALS TO DRILL OR TO DEEPEN OR PLUG BACK TO A DIFFERENT RESERVOIR. USE "APPLICATION FOR PERMIT" (FORM C-101) FOR SUCH PROPOSALS.)		WELL API NO. 30-005-62806
1. Type of Well: Oil Well <input type="checkbox"/> Gas Well <input checked="" type="checkbox"/> Other <input type="checkbox"/>		5. Indicate Type of Lease STATE <input checked="" type="checkbox"/> FEE <input type="checkbox"/>
2. Name of Operator GREAT WESTERN DRILLING COMPANY		6. State Oil & Gas Lease No. V-3354
3. Address of Operator P.O. BOX 1659 MIDLAND, TX 79702		7. Lease Name or Unit Agreement Name QUAIL STATE
4. Well Location Unit Letter <u>A</u> : 660 feet from the <u>NORTH</u> line and 660 feet from the <u>EAST</u> line Section <u>36</u> Township <u>6S</u> Range <u>24E</u> NMPM County <u>CHAVES</u>		8. Well Number 1
11. Elevation (Show whether DR, RKB, RT, GR, etc.) 3869 GR		9. OGRID Number 009338
		10. Pool name or Wildcat PECOS SLOPE; ABO (GAS)

12. Check Appropriate Box to Indicate Nature of Notice, Report or Other Data

NOTICE OF INTENTION TO:

PERFORM REMEDIAL WORK ☐ PLUG AND ABANDON ☒  
 TEMPORARILY ABANDON ☐ CHANGE PLANS ☐  
 PULL OR ALTER CASING ☐ MULTIPLE COMPL ☐  
 DOWNHOLE COMMINGLE ☐  
 CLOSED-LOOP SYSTEM ☐  
 OTHER: ☐

SUBSEQUENT REPORT OF:

REMEDIAL WORK ☐ ALTERING CASING ☐  
 COMMENCE DRILLING OPNS. ☐ P AND A ☒  
 CASING/CEMENT JOB ☐  
 OTHER: ☐

13. Describe proposed or completed operations. (Clearly state all pertinent details, and give pertinent dates, including estimated date of starting any proposed work). SEE RULE 19.15.7.14 NMAC. For Multiple Completions: Attach wellbore diagram of proposed completion or recompletion.

Plug Summary:

Plug #1: (Perforations, 3,410'-3,028', 28 Sacks Type I/II Cement)

PU CR. Set CR at 3,414'. POOH. TIH with tubing to 3410'. RU cementing services. Pumped plug #1 from 3410' to 3050'. RD cementers. LD 13 joints & TOO. WOC. TIH & tagged TOC at 3028'.

Plug #2: (San Andres Formation Top, 2,220'-1,876', 26 Sacks Type I/II Cement)

Trip to 2,220'. RU cementing services. Pumped plug #2 from 2220' to 1876'.

Plug #3: (Intermediate Casing Shoe, 1,876' to 1,645', 24 Sacks Type I/II Cement)

RU wireline services. RIH & perforated at 1876'. RD wireline. Successfully established an injection rate. TIH with 4.5" packer, but packer would not set. TOO. PU new packer. TIH & set at 1604' with EOT at 1696'. RU cementing services. Pumped plug #3 1876' to approximately 1726'. Pumped 16 inside & 8 outside. RD cementers. Unset packer & TOH. WOC 4 hours. TIH & tagged top of plug #3 at 1645'.

Plug #4: (Yates Formation Top, 1,420' to 978', 34 Sacks Type I/II Cement)

Trip to 1,420'. RU cementing services. Pumped plug #4 from 1420' to 978'. RD cementers. LD 14 joints & TOO.

Spud Date: 04/05/1991

Rig Release Date: 4/14/23

I hereby certify that the information above is true and complete to the best of my knowledge and belief.

SIGNATURE

TITLE PRODUCTION TECHNICIAN

DATE 05/10/23

Type or print name GINA KING

E-mail address: gking@gwdc.com

PHONE: (432)682-5241

For State Use Only

APPROVED BY:

TITLE

DATE

Conditions of Approval (if any):



Submit 1 Copy To Appropriate District Office

District I - (575) 393-6161

1625 N. French Dr., Hobbs, NM 88240

District II - (575) 748-1283

811 S. First St., Artesia, NM 88210

District III - (505) 334-6178

1000 Rio Brazos Rd., Aztec, NM 87410

District IV - (505) 476-3460

1220 S. St. Francis Dr., Santa Fe, NM

87505

State of New Mexico  
Energy, Minerals and Natural ResourcesForm C-103  
Revised July 18, 2013OIL CONSERVATION DIVISION  
1220 South St. Francis Dr.  
Santa Fe, NM 87505

WELL API NO. 30-005-62806
5. Indicate Type of Lease STATE <input checked="" type="checkbox"/> FEE <input type="checkbox"/>
6. State Oil & Gas Lease No. V-3354
7. Lease Name or Unit Agreement Name QUAIL STATE
8. Well Number 1
9. OGRID Number 009338
10. Pool name or Wildcat PECOS SLOPE; ABO (GAS)

SUNDRY NOTICES AND REPORTS ON WELLS  
(DO NOT USE THIS FORM FOR PROPOSALS TO DRILL OR TO DEEPEN OR PLUG BACK TO A DIFFERENT RESERVOIR. USE "APPLICATION FOR PERMIT" (FORM C-101) FOR SUCH PROPOSALS.)

1. Type of Well: Oil Well ☐ Gas Well ☒ Other2. Name of Operator  
GREAT WESTERN DRILLING COMPANY3. Address of Operator  
P.O. BOX 1659  
MIDLAND, TX 79702

4. Well Location  
Unit Letter A : 660 feet from the NORTH line and 660 feet from the EAST line  
Section 36 Township 6S Range 24E NMPM County CHAVES

11. Elevation (Show whether DR, RKB, RT, GR, etc.)  
3869 GR

## 12. Check Appropriate Box to Indicate Nature of Notice, Report or Other Data

## NOTICE OF INTENTION TO:

PERFORM REMEDIAL WORK ☐ PLUG AND ABANDON ☒  
TEMPORARILY ABANDON ☐ CHANGE PLANS ☐  
PULL OR ALTER CASING ☐ MULTIPLE COMPL ☐  
DOWNHOLE COMMINGLE ☐  
CLOSED-LOOP SYSTEM ☐  
OTHER: ☐

## SUBSEQUENT REPORT OF:

REMEDIAL WORK ☐ ALTERING CASING ☐  
COMMENCE DRILLING OPNS. ☐ P AND A ☒  
CASING/CEMENT JOB ☐  
OTHER: ☐

13. Describe proposed or completed operations. (Clearly state all pertinent details, and give pertinent dates, including estimated date of starting any proposed work). SEE RULE 19.15.7.14 NMAC. For Multiple Completions: Attach wellbore diagram of proposed completion or recompletion.

4/13/23 (cond't) Pumped plug #3 1876' to approximately 1726'. RD cements. Unset packer & TOO. WOC 4 hours. TIH & tagged top of plug #3 at 1645'. Pumped mud/gel spacer from 1645' to 1420'. LD 7 joints. RU cementing services. Pumped plug #4 from 1420' to approximately 978'. RD cements. LD 14 joints & TOO. WOC overnight. Shut in & secured well.  
4/14/23 Arrived on location & held safety meeting. Checked well pressures: Tubing 0 psi, Casing: 0 psi, Bradenhead: 0 psi. Bled down well. RU wireline services. RIH & perforated at 978'. RD wireline services. Successfully established an injection rate. TIH with 4.5" packer & set at 711'. RU cementing services. Pumped plug #5 cement from 978' to approximately 828'. RD cements. Unset packer & TOO. WOC 4 hours. TIH & tagged top of plug #5 at 812'. Pumped mud/gel spacer from 812' to 300'. LD tubing. RU wireline services. RIH & perforated at 300'. POOH. RU cements. Successfully established circulation down 4.5" casing, into perforations, & out BH valve at surface. Pumped Plug #6 down 4.5" casing, into perforations, & out BH valve at surface. RD cements. WOC 4 hours. RD floor. ND BOP. NU WH. Cut off old WH. Cement was 200' low in 4.5" & 200' low in 10.75". RU cements. Pumped cement down all casing strings with 1" poly pipe. Filled both strings to surface. Welded on P&A marker per all state & federal regulations.

Spud Date: 04/05/1991

Rig Release Date: 4/14/23

I hereby certify that the information above is true and complete to the best of my knowledge and belief.

SIGNATURE  TITLE PRODUCTION TECHNICIAN DATE 05/09/23

Type or print name GINA KING E-mail address: gking@gwdc.com PHONE: (432)682-5241

## For State Use Only

APPROVED BY:  TITLE Petroleum Specialist DATE 05/09/2023

Conditions of Approval (if any):



## Great Western Drilling

### Plug And Abandonment End Of Well Report

#### Quail State #001

660' FNL & 660' FEL, Section 36, 06S, 24E

Chaves County, NM / API 30-005-62806

#### Work Summary:

- 4/10/23** Made BLM and NMOCD P&A operations notifications at 9:00 AM MST.
- 4/11/23** Arrived on location and held safety meeting. Prepared location using backhoe. Moved equipment onto location. RU P&A rig. Secured and shut in well for the day.
- 4/12/23** Arrived on location and held safety meeting. ND WH, NU BOP, RU floor. Worked tubing string. LD 117 joints of 2-3/8" tubing, and SN. Prep and tallied 2-3/8" work string. PU 4.5" scraper. TIH to 3485'. TOOH. Remove scraper and install 4.5" CR. TIH and set CR at 3414'. Successfully circulated hole with 45 bbls, pumped 55 bbls total. Successfully pressure tested casing to 800 psi. TOOH. RU wireline services. RIH and logged well. RD wireline services. TIH with tubing to 3410'. RU cementing services. Pumped plug #1 from 3410' to 3050'. RD cementers. L/D 13 joints and TOOH. WOC overnight. Secured and shut in well.
- 4/13/23** Arrived on location and held safety meeting. Checked well pressures: Tubing 0 psi, Casing: 0 psi, Bradenhead: 0 psi. Bled down well. TIH and tagged TOC at 3028'. Pumped mud/gel spacer from 3028' to 2220'. RD cementers. LD 27 joints. RU cementing services. Pumped plug #2 from 2220' to 1876'. RD cementers. LD 11 joints. Reverse circulated at 1882' and TOOH. RU wireline services. RIH and perforated at 1876'. RD wireline. Successfully established an injection rate. TIH with 4.5" packer, but packer would not set. TOOH. PU new packer. TIH and set at 1604' with EOT at 1696'. R/U cementing services. Pumped plug #3 1876' to approximately 1726'. RD cementers. Unset packer and TOOH. WOC 4 hours. TIH and tagged top of plug #3 at 1645'. Pumped mud/gel spacer from 1645' to 1420'. LD 7 joints. RU cementing services. Pumped plug #4 from 1420' to approximately 978'. RD cementers. LD 14 joints and TOOH. WOC overnight. Shut in and secured well.

**Quail State #001**

**4/14/23** Arrived on location and held safety meeting. Checked well pressures: Tubing 0 psi, Casing: 0 psi, Bradenhead: 0 psi. Bled down well. RU wireline services. RIH and perforated at 978'. RD wireline services. Successfully established an injection rate. TIH with 4.5" packer and set at 711'. RU cementing services. Pumped plug #5 cement from 978' to approximately 828'. RD cementers. Unset packer and TOOH. WOC 4 hours. TIH and tagged top of plug #5 at 812'. Pumped mud/gel spacer from 812' to 300'. LD tubing. RU wireline services. RIH and perforated at 300'. POOH. RU cementers. Successfully established circulation down 4.5" casing, into perforations, and out BH valve at surface. Pumped Plug #6 down 4.5" casing, into perforations, and out BH valve at surface. RD cementers. WOC 4 hours. RD floor. ND BOP. NU WH. Cut off old WH. Cement was 200' low in 4.5" and 200' low in 10.75". RU cementers. Pumped cement down all casing strings with 1" poly pipe. Filled both strings to surface. Welded on P&A marker per all state and federal regulations.

**Plug Summary:****Plug #1: (Perforations, 3,410'-3,028', 28 Sacks Type I/II Cement)**

PU CR. Set CR at 3,414'. POOH. TIH with tubing to 3410'. RU cementing services. Pumped plug #1 from 3410' to 3050'. RD cementers. LD 13 joints and TOOH. WOC. TIH and tagged TOC at 3028'.

**Plug #2: (San Andres Formation Top, 2,220'-1,876', 26 Sacks Type I/II Cement)**

Trip to 2,220'. RU cementing services. Pumped plug #2 from 2220' to 1876'.

**Plug #3: (Intermediate Casing Shoe, 1,876' to 1,645', 24 Sacks Type I/II Cement)**

RU wireline services. RIH and perforated at 1876'. RD wireline. Successfully established an injection rate. TIH with 4.5" packer, but packer would not set. TOOH. PU new packer. TIH and set at 1604' with EOT at 1696'. RU cementing services. Pumped plug #3 1876' to approximately 1726'. Pumped 16 inside and 8 outside. RD cementers. Unset packer and TOH. WOC 4 hours. TIH and tagged top of plug #3 at 1645'.

**Plug #4: (Yates Formation Top, 1,420' to 978', 34 Sacks Type I/II Cement)**

Trip to 1,420'. RU cementing services. Pumped plug #4 from 1420' to 978'. RD cementers. LD 14 joints and TOOH.



**Quail State #001****Plug #5: (Surface Casing Shoe, 978' to 812', 24 Sacks Type I/II Cement)**

RU wireline services. RIH and perforated at 978'. RD wireline services. Successfully established an injection rate. TIH with 4.5" packer and set at 711'. RU cementing services. Pumped plug #5 cement from 978' to approximately 828'. Pumped 12 inside and 12 outside. RD cementers. Unset packer and TOOH. WOC 4 hours. TIH and tagged top of plug #5 at 812'.

**Plug #6: (Surface 300' to Surface', 211 Sacks Type I/II Cement (68 sx for top off))**

RU wireline services. RIH and perforated at 300'. POOH. RU cementers. Successfully established circulation down 4.5" casing, into perforations, and out BH valve at surface. Pumped Plug #6 down 4.5" casing, into perforations, and out BH valve at surface. Pumped 24 sx inside and 110 outside. RD cementers. WOC 4 hours. RD floor. ND BOP. NU WH. Cut off old WH. Cement was 200' low in 4.5" and 200' low in 10.75". RU cementers. Pumped cement down both casing strings with 1" poly pipe. Filled all strings to surface. Welded on P&A marker per all state and federal regulations.

## Existing Wellbore Diagram

Quail State #1

API #: 30-005-62806

Chaves County, New Mexico

### Surface Casing

10.75" 40.5# @ 928 ft

### Formation

Yates - 1420 feet

San Andres - 2220 feet

### Intermediate Casing

7.625" 29.2# @ 1826 ft

### Perforations

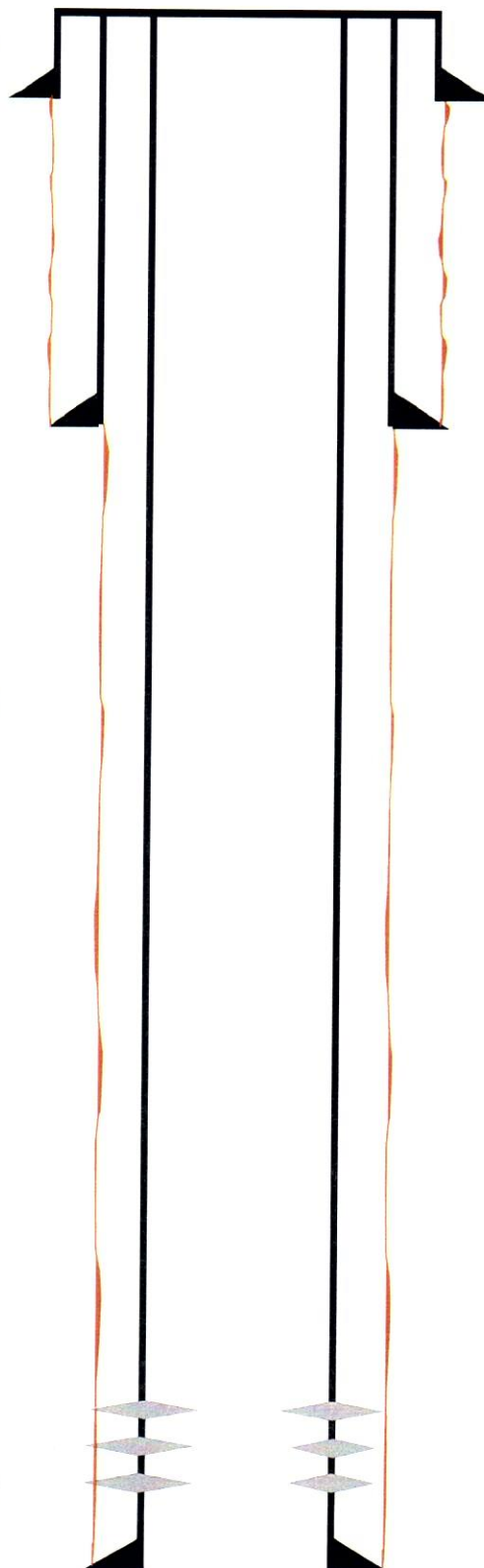
3462 ft - 3478 ft

3500 ft - 3515 ft

3564 ft - 3566 ft

### Production Casing

4.5" 11.6# @ 3950 ft



Quail State #1  
API #: 30-005-62806  
Chaves County, New Mexico

300 feet - Surface  
300 foot plug  
20 sacks of Type III Cement

10.75" 40.5# @ 928 ft

1420 feet - 828 feet  
592 foot plug  
40 sacks of Type III Cement

Yates - 1420 feet  
San Andres - 2220 feet

2220 feet - 1726 feet  
494 foot plug  
87 sacks of Type III Cement  
Squeeze 50 sacks of Type III Cement

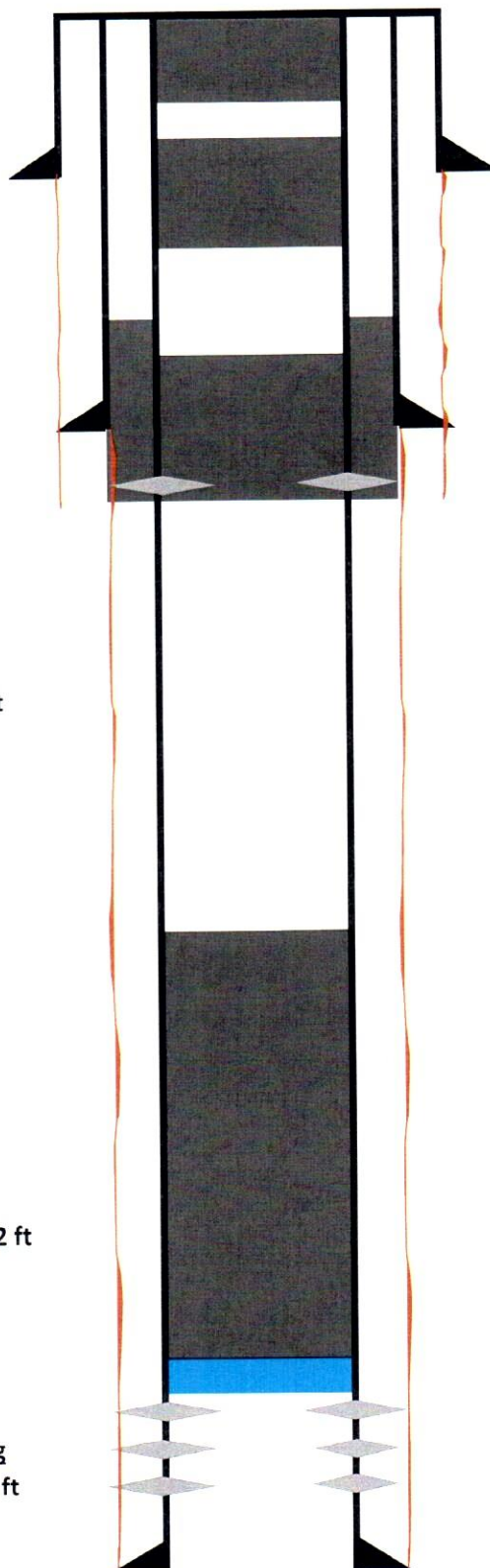
3412 feet - 3050 feet  
362 foot plug  
25 sacks of Type III Cement

7.625" 29.2# @ 1826 ft

3462 ft - 3478 ft  
3500 ft - 3515 ft  
3564 ft - 3566 ft

## Retainer @ 3412 ft

4.5" 11.6# @ 3950 ft





**District I**  
1625 N. French Dr., Hobbs, NM 88240  
Phone:(575) 393-6161 Fax:(575) 393-0720

**District II**  
811 S. First St., Artesia, NM 88210  
Phone:(575) 748-1283 Fax:(575) 748-9720

**District III**  
1000 Rio Brazos Rd., Aztec, NM 87410  
Phone:(505) 334-6178 Fax:(505) 334-6170

**District IV**  
1220 S. St Francis Dr., Santa Fe, NM 87505  
Phone:(505) 476-3470 Fax:(505) 476-3462

**State of New Mexico**  
**Energy, Minerals and Natural Resources**  
**Oil Conservation Division**  
**1220 S. St Francis Dr.**  
**Santa Fe, NM 87505**

CONDITIONS

Action 215244

CONDITIONS

Operator:  GREAT WESTERN DRILLING CO P.O. Box 1659 Midland, TX 79701	OGRID:  9338
	Action Number:  215244
	Action Type:  [C-103] Sub. Plugging (C-103P)

CONDITIONS

Created By	Condition	Condition Date
john.harrison	None	5/9/2023