

Well Name: FEDERAL BI	Well Location: T17S / R32E / SEC 28 / NENW /	County or Parish/State: LEA / NM
Well Number: 1	Type of Well: OTHER	Allottee or Tribe Name:
Lease Number: NMLC057210	Unit or CA Name:	Unit or CA Number:
US Well Number: 3002527068	Well Status: Water Disposal Well	Operator: SPUR ENERGY PARTNERS LLC

Accepted for Record Only

SUBJECT TO LIKE APPROVAL BY BLM

X 7

NMOCD 7/13/23

Subsequent Report

Sundry ID: 2659836

Type of Submission: Subsequent Report

Date Sundry Submitted: 03/03/2022

Date Operation Actually Began: 02/02/0222

Type of Action: Workover Operations

Time Sundry Submitted: 09:17

Actual Procedure: Please find PJR, WBD and passing MIT test for your use attached.

SR Attachments

Actual Procedure

- Federal\_BI\_SWD\_1\_Passing\_MIT\_20220303091719.pdf
- Federal\_BI\_SWD\_Final\_WBD\_20220303091719.pdf
- Federal\_BI\_SWD\_1\_WO\_Report\_20220303091719.pdf

<b>Well Name:</b> FEDERAL BI	<b>Well Location:</b> T17S / R32E / SEC 28 / NENW /	<b>County or Parish/State:</b> LEA / NM
<b>Well Number:</b> 1	<b>Type of Well:</b> OTHER	<b>Allottee or Tribe Name:</b>
<b>Lease Number:</b> NMLC057210	<b>Unit or CA Name:</b>	<b>Unit or CA Number:</b>
<b>US Well Number:</b> 3002527068	<b>Well Status:</b> Water Disposal Well	<b>Operator:</b> SPUR ENERGY PARTNERS LLC

Operator Certification

I certify that the foregoing is true and correct. Title 18 U.S.C. Section 1001 and Title 43 U.S.C. Section 1212, make it a crime for any person knowingly and willfully to make to any department or agency of the United States any false, fictitious or fraudulent statements or representations as to any matter within its jurisdiction. Electronic submission of Sundry Notices through this system satisfies regulations requiring a submission of Form 3160-5 or a Sundry Notice.

<b>Operator Electronic Signature:</b> SARAH CHAPMAN	<b>Signed on:</b> MAR 03, 2022 09:17 AM
<b>Name:</b> SPUR ENERGY PARTNERS LLC	
<b>Title:</b> Regulatory Directory	
<b>Street Address:</b> 9655 KATY FREEWAY, SUITE 500	
<b>City:</b> Houston	<b>State:</b> TX
<b>Phone:</b> (832) 930-8613	
<b>Email address:</b> SCHAPMAN@SPUREPLLC.COM	

Field Representative

<b>Representative Name:</b>		
<b>Street Address:</b>		
<b>City:</b>	<b>State:</b>	<b>Zip:</b>
<b>Phone:</b>		
<b>Email address:</b>		

BLM Point of Contact

<b>BLM POC Name:</b> Jonathon W Shepard	<b>BLM POC Title:</b> Petroleum Engineer
<b>BLM POC Phone:</b> 5752345972	<b>BLM POC Email Address:</b> jshepard@blm.gov
<b>Disposition:</b> Accepted	<b>Disposition Date:</b> 03/11/2022
<b>Signature:</b> Jonathon Shepard	

## Federal BI SWD #1 Post Job Report:

2/2/22:

SPUR ENERGY		Spur Workover Report			Report #: 7.0 Report Date: 2/2/2022 AFE#: X21566	
<b>Well Name: FEDERAL BI SWD #1</b>						
API/UVI 30-025-27068	Field Name SWD; WOLFCAMP	State/Province NM	County LEA	Well Configuration Type		
Spud Date 8/4/2008 00:00	Rig Release Date	TARGET FORMATION	Latitude (")	Longitude (")		
<b>Job Description</b>						
Job Category Expense Workover	Start Date 11/22/2021	End Date 3/2/2022	Primary Job Type Other	Job Subtype Wireline	Contractor Integrity Well Services	Rig # # 101
Rig Start Date 2/28/2022						
Rig Release Date 3/2/2022						
Objective Shotholes						
AFE Number X21566		Total AFE + Supp Amount (Cost) 150,000.00		Daily Field Est Total (Cost) 6,640.00		Cum Field Est To Date (Cost) 43,740.00
Job Contact		Company		Mobile		Email
Bill Hendrick, Workover Foreman		SEP - Permian LLC		832.776.5535		WHendrick@SpurEPLLC.com
George Waters, Sr. Operations Engineer		Spur Energy Partners LLC		817.913.5536		GWaters@SpurEPLLC.com
Rex Glenn, Consultant		RGI Consultants		575.420.0929		rgi.consulting@yahoo.com
<b>Daily Operations</b>						
Operations Summary ROUTED RIG TO LOCATION, HELD PJSM, CHECKED ANCHORS, THEY WERE GOOD. SPOTTED SPUR RIG MAT, MIRU WSU, WELL HAD 1000# SITP AND 900# SICP, ND MANIFOLD, FLANGED UP FLOW-LINE W/CHOKE TO FRAC TANK. ROLLED KILL FLUID TANK, MEASURED WITH MUD SCALE AND HAD 11.6# GOOD KILL FLUID. SHUT DOWN EARLY DUE TO WEATHER CONDITIONS, DID NOT WANT TO PUMP KILL FLUID IF WEATHER WAS GOING TO SHUT US DOWN NEXT DAY. SDFN.						
Operations at Report Time				Operations Next Report Period CHECKED WEATHER, REV CIRC KILL FLUID AROUND, NU BOP, UNSET AND POOH W/PKR		
<b>Time Log</b>						
Start Time	End Time	Dur (hr)	Cum Dur (hr)	Code 1	Code 2	Com
07:00	08:00	1.00	1.00	SMTG	Safety Meeting	ROUTED RIG TO LOC, HELD PJSM
08:00	09:00	1.00	2.00	RURD	Rig Up/Down PU	
09:00	14:00	5.00	7.00	IWHD	Install Wellhead	ORDER FLOW-BACK LINE, FLANGED UP LINE TO FB TANK, ROLLED FLUID TANK

2/4/22:

Bill Hendrick, Workover Foreman	SEP - Permian LLC	832.776.5535	WHendrick@SpurEPLLC.com
George Waters, Sr. Operations Engineer	Spur Energy Partners LLC	817.913.5536	GWaters@SpurEPLLC.com
Rex Glenn, Consultant	RGI Consultants	575.420.0929	rgi.consulting@yahoo.com
<b>Daily Operations</b>			
Operations Summary CREW CAME IN SLOW DUE TO WEATHER CONDITIONS, AOL AND HELD PJSM, PUMP TRUCK WAS FROZE UP, RIG WOULD NOT START, WORKED ON GETTING THEM THAWED OUT, GOT PUMP TRUCK READY, MECHANIC WORKED ON RIG, SWAPPED OUT BATTERIES, GOT RIG STARTED, CHECKED DERRICK FOR ICE. WELL HAD 900# SICP AND 1000# SITP, ATTEMPTED TO CIRCULATE 11.6# KILL FLUID BUT KILL FLUID IN TANK WAS FROZEN AND SLUSHY, MANIFOLD FROZE AND BOTTOM GATE VALVE ON TANK FROZE SOLID. NOTIFIED ENGINEER, ATTEMPTED TO FIND HOT OILER TO ROLL TANK BUT THEY WERE ALL TIED UP. RESCHEDULED WORK-STRING AND PIPE RACKS TO BE DELIVERED, SET UP HOT OILER TO COME ROLL FRAC TANK SUNDAY EVENING. SDFW			
Operations at Report Time		Operations Next Report Period CIRCULATE KILL FLUID, KILL WELL, UNSET PACKER, POOH, P/U BIT AND SCRAPER ON WS, RIH.	

2/7/22:

<b>Daily Operations</b>	
Operations Summary AOL & PJSM, 900# SICP, 1000# SITP, MIRU Double R Kill Truck, Pump 147 Bbls. 11.6# CA/CI Down Csg. Started @ 1 BPM @ 900#, Tbg. Wide Open @ 40# Flowback 200 Bbls., Got To 2.4 BPM @ 500#, Shut Down Kill Truck Csg. On Vacuum, Tie Onto Tbg. @ 1100# Started Pumping @ 1 BPM @ 1100#, Got To 2.4 BPM @ 500#, Pumped 60 Bbls. 13 Bbls. Over Tbg. Volume, Shut Down Kill Truck, Tbg. On 1/2 Bbls. Per Min. Vacuum, Watch Well For 1 Hour To Make Sure It's Dead, , MIRU LD/PU Machine, Pipe Racks And 2 7/8" L-80 WS, ND WH, NU BOP, Release Packed POOH W/ Inj. Tbg., POOH W/ 302 Jts. 2 7/8" L-80 Duo Lined Tbg., Packer, 6' Sub W/ Profile WEG, Packer Had Hole In Mandrel And Had Hole In Duo Lined XO Sub, PU 4 5/8" Bit, 5 1/2" Csg. Scraper, RIH W/ 100 Jts. 2 7/8" L-80 WS, Secure Well & SDFN, Will Have To Replace Bottom Two Jts. 2 7/8" Duo Lined Tbg. And 60 2 7/8" Collars. Due To Pitting	

2/8/22:

Daily Operations
<p>Operations Summary</p> <p>AOL &amp; PJSM, 0# on Tbg. &amp; Csg., Start To Finish RIH W/ Bit &amp; Scraper, PU RIH W/ 205 Jts. 2 7/8" L-80 WS, To 9674', Work Scraper Up &amp; Down Where We Are Going To Set RBP To Test., POOH LD Bit &amp; Scraper, Well Started Flowing Pump 50 Bbls. 11.6# Kill Fluid @ 0#, PU RIH W/ Kline RBG, On/Off Tool, Kline Crest Packer, RIH W/ 304 Jts. 2 7/8" L-80 WS, Set RBP @ 9630', LD 1 Jt. 2 7/8" L-80 WS, Set Packer @ 9615', Load Tbg. W/ 1.7 Bbls. 11.6# Kill Fluid, Pressure To 1500# For 10 Mins., GT, Tie On To Csg. Load W/ 5 Bbls. 11.6# Kill Fluid, Pressure To 300# For 15 Mins., GT, Secure Well &amp; SDFN</p>

2/9/22:

Daily Operations
<p>Operations Summary</p> <p>AOL &amp; PJSM, Bled Pressur Down That We Left Last Night, Tighten Larkin Flange &amp; WH, MIRU Kill Truck W/ Chart Recorder, Pressure Csg. To 300# For 30 Mins., Good Chart No Loss, Start To Prepare To LD 2 7/8" L-80 WS, Waiting On Orders As To Wheather to Pull RBP, To Run Packer, POOH LD 100 Jts. 2 7/8" L-80 WS, Lunch Time, POOH LD 205 Jts. 2 7/8" L-80 WS, Secure Well &amp; SDFN</p>

2/10/22:

Daily Operations
<p>Operations Summary</p> <p>AOL &amp; PJSM, MIRU Hydrotest Testers, RIH W/ 5 1/2" x 2 7/8" AS 1X Packer W/ 1.875F SS Profile &amp; T2 On/Off Tool, 10' x 2 7/8" NP Sub W/ 1.81R Nipple W/ PO Plug WLEG, RIH W/ Duo-Lined D-20 L-80 Tbg. Testing To 3K Below Slips, 3K Max Pressure Per Duo-Lined, Replace 20 2 7/8" L-80 Collars, Duo-Lined Tech On Location Inspecting Seals &amp; Replacing, Test In The W/ 301 Jts. 2 7/8" Duo-Lined L-80 Tbg., Load Tbg. W/ 47 Bbls. 11.6# Kill Fluid, Set Packer W/ 10K Compression, L&amp;T Csg. W/ 5 Bbls. 11.6# Kill Fluid, Test To 300#, GT, Secure Well &amp; SDFN</p>

2/11/22:

Daily Operations
<p>Operations Summary</p> <p>AOL &amp; PJSM, MIRU Kill Truck &amp; Vac. Truck, Get Off On/Off Tool &amp; Pump 104 Bbls. Down Tbg. Lost Circulation Packer Fluid W/ Biocide., Shut In Tbg. Tie Onto Csg. Pump 150 Bbls. Packer Fluid Down Csg., Latch Up On Packer, Pump 50 Bbls. 11.6# Kill Fluid Down Tbg., ND BOP, NU WH, Hook Up Injection Line, RDMO PU, Clean Location, Turn Well Over To Production, Moving Rig To Aid State 14#1 SWD</p>

2/14/22:

Daily Operations
<p>Operations Summary</p> <p>R.U. Precision Pressure Data. Tubing had 0, casing had 1310#s. N.D. well head. N.U. Lubricator. RIH with 1.901" gauge ring to 9586'. POOH. RBIH with 1.875" FSG plug, 7' X 1.5" jars, 6" X 1.5 knuckle jt, 10' X 1.5 sinker bar. Tagged @ 9592'. Set plug. POOH with wireline. R.U. Timberline Hot oil truck. Tubing was full. Pressured up to 700#s. Held for 10 minutes. Held good. Bled down csg. Bled down to 0 in 5 minutes, was still belching out a little water. Tubing fell to 450#s. Shut casing back in. 1300#s in 5 minutes, tubing to 650#s. Bled csg back down &amp; left open to truck while rigging down slick line truck. Released Precision Pressure Data. Released Hot oil truck. After 20 minutes casing was still 0 but kicking out a little fluid. Tubing was 450. Shut csg, pressure came up to 1000#s in a minute, 1150 in 1-1/2 minutes. Tubing came up to 650#s. Bled tubing off to truck. Casing still at 1200. Bled casing to truck for 30 minutes. Tubing had 0#s, tubing was full, no vacuum. Shut csg in. Built up to 1150 in 1-1/2 minutes. Tubing stayed 0. Flowed 35 bbls from back side total today. Released vacuum truck. Left well shut in.</p>

2/28/22:

Daily Operations
<p>Operations Summary</p> <p>ROUTED RIG TO LOCATION, HELD PJSM, CHECKED ANCHORS, ANCHORS WERE GOOD. SPOTTED RIG MAT, MIRU WSU, 0# SITP AND 1,100# SICP. ORDERED IRON AND RIGGED UP FLOWBACK LINES TO FRAC TANKS. WAITED FOR KILL FLUID TO GET TO LOCATION, EMPTIED IN FRAC TANK. OPENED UP AND BLED CSG DOWN TO TANK, PRESSURE BLED OFF BUT CSG FLOWING 1BBL PER MINUTE, HOOKED UP VAC TRUCK TO PULL FLUID FROM BACKSIDE, ND WH AND NU BOP. UNSET PACKER AT 9,600', PULLED UP, CIRCULATED REVERSE W/200 BBLs OF 11.6# CALCIUM CHLORIDE, CSG QUIT FLOWING, SHUT IN CASING AND TBG, NO PRESSURE. LATCHED BACK ON TO PACKER, SECURED WELL AND SDFN, WILL CHECK PRESSURE IN MORNING.</p>

3/1/22:

Daily Operations	
<p><b>Operations Summary</b>  AOL AND HELD PJSM, CHECKED PRESSURE ON WELL, 0# OF SITP AND 0# SICP. NOTIFIED ENGINEER, CALL MADE TO UNSET PACKER AND MOVE UP HOLE 20', CHECKED YARD FOR DUOLINED SUBS AND THEY DIDNT HAVE ANY, CONTACTED CLS, ORDERED SUBS AND TECH. SECURED WELL AND WAITED FOR THEM TO REACH LOCATION. UNSET 5 1/2 ASX PACKER SET AT 9,600', POOH AND LD 2 - JTS OF 2 7/8 TBG, P/U 2 - 2 7/8 X 6' DUOLINED SUBS, PICKED UP SLICK JT, LOWERED PACKER DOWN TO 9,580', SET PACKER W/20K COMPRESSION, PRESSURED UP ON CSG TO 500#, HELD GOOD, BLED OFF, UNLATCHED FROM PACKER, CIRCULATED 2 BBLs OF PACKER FLUID IN WITH KILL FLUID TO PROTECT TBG AND CSG, LATCHED BACK UP, ND BOP, NU INJECTION TREE, FLANGED UP, PRESSURED UP TO 500# AND TESTED CSG AND TREE, NO LEAKS, BLED PRESSURE DOWN. SECURED WELL, CALLED LEA COUNTY BLM OFFICE AND NOTIFIED THAT WE WERE READY TO TEST, TALKED TO JOE, HE SAID HE WILL COME OUT AND WITNESS MIT TEST IN MORNING. CHART RECORDER ON LOCATION. SDFN</p>	
Operations at Report Time	<p><b>Operations Next Report Period</b>  PERFORM MIT PRESSURE TEST ON CSG WITH BLM WITNESS, RU SL, RIH AND PULL PROFILE PLUG. RD WSU.</p>

3/2/22:

Daily Operations	
<p><b>Operations Summary</b>  AOL AND HELD PJSM, NO PRESS ON WELL, R/U PUMP TRUCK, CHART RECORDER, BLM REP JOE BALDERAZ TO WITNESS, LOADED CSG AND PRESSURED UP ON CSG TO 510#, CHARTED AND MONITORED, AFTER 30 MINUTES WE HAD 500#, TESTED GOOD. BLED PRESSURE DOWN. EMAILED CHART AND CHART RECORDER INFORMATION IN TO BLM REP. R/U SLICK LINE TRUCK, RIH W/PUNCH TOOL, TAGGED PLUG AT 9,580' AND OPENED UP, DID NOT SEE MUCH PRESSURE ON SURFACE, POOH, RIH W/RETRIEVAL TOOL, JARS, SINKER BAR, TAGGED PLUG AT 9,580', OPERATOR THOUGHT HE GOT LATCHED UP, POOH AND DID NOT HAVE PLUG, SEEN SOME SALT BUILD UP ON TOOL, CLEANED AND SWAPPED OUT TOOL, RBIH, LATCHED UP TO 1.875" FSG PLUG, UNSET AND TBG WENT ON VACUUM. POOH AND LD PLUG, RD SL TRUCK. RD WSU, CLEANED UP LOCATION, TURNED OVER TO PRODUCTION, RELEASED RENTALS.</p>	



## MIT Test for Federal BI SWD #1:

## Calibration Certificate

Company Name: Double R Transportation  
Recorder Type: Bristol  
Recorder Serial: #MFG-1877

Recorder Pressure Range: 0-1000# Accuracy +/-: 0.2% PSIG  
Temperature Range: \_\_\_\_\_ Deg F.

Increasing Pressure			Decreasing Pressure		
Applied Pressure	Indicated Pressure	Error%	Applied Pressure	Indicated Pressure	Error%
0.0#	0.0#	0	800#	800#	0
100#	100#	0	600#	600#	0
300#	300#	0	400#	400#	0
500#	500#	0	200#	200#	0
700#	700#	0	0.0#	0.0#	0
1000#	1000#	0			

Temperature Test		
Applied Temperature	Indicated Temperature	Error%

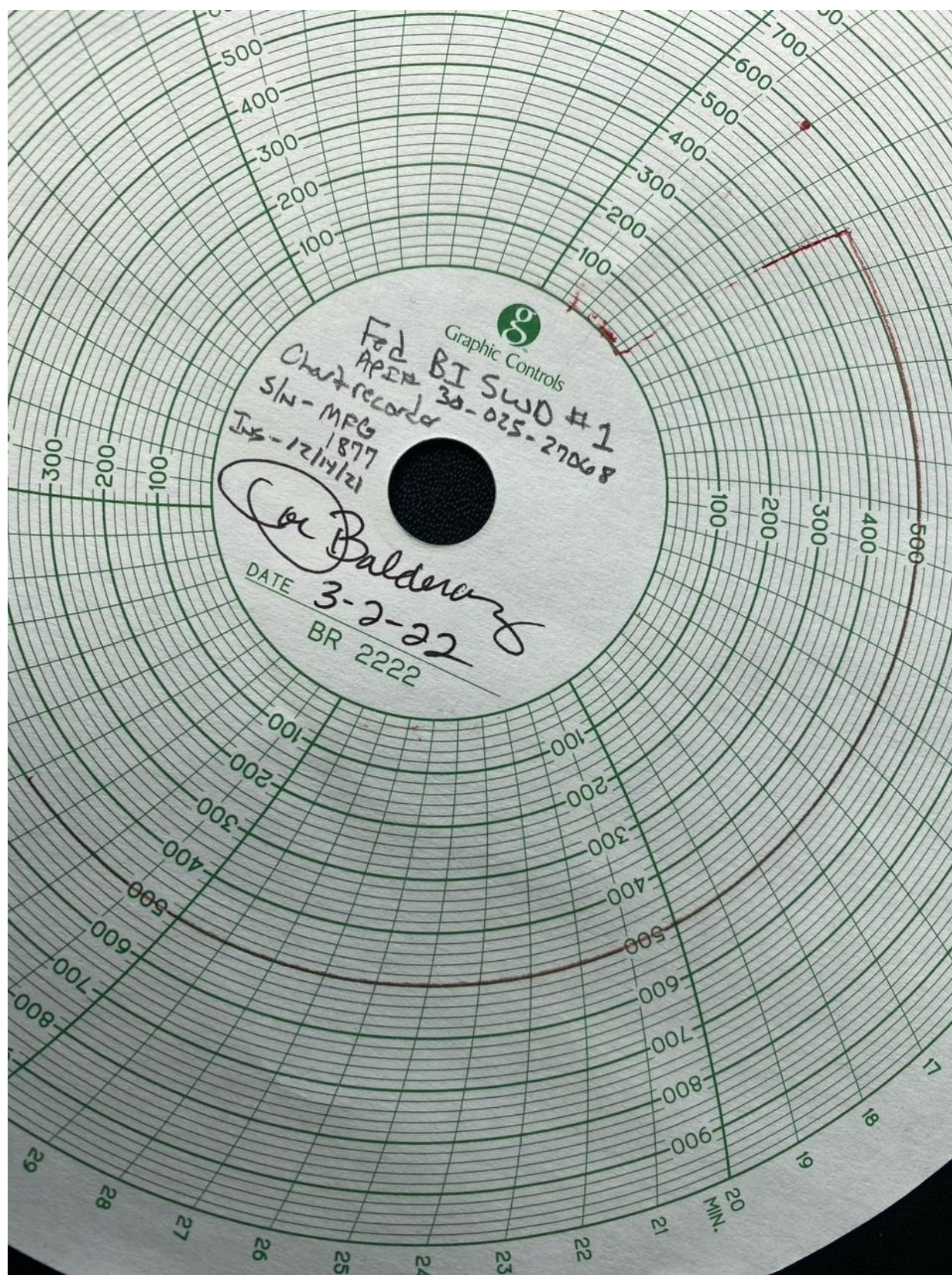
<b>Certified Calibration Instrument Used</b>
Gauge: <u>Crystal</u>
Deadweight: _____

Remarks: \_\_\_\_\_

Calibration Date: 12-14-21

Technician: [Signature] Joel Torres





Lea County, NM  
API# 30-025-27068

CURRENT WBD

SPUD DATE: 10/13/1980  
ELEV: 3941' GL  
P&A'D: 12/19/2003  
RE-ENTERED: 7/31/2008**13-3/8" 54.5# J-55 CSG @ 723'**CMT W/ 700 SX CLASS C  
CIRC 175 SX TO SURFACE25 SX CMT PLUG F/ 662'-775' (12/19/03)  
DRILLED OUT 8/4/0825 SX CMT PLUG F/ 775'-1,023 (12/19/03)  
DRILLED OUT 8/5/0825 SX CMT PLUG F/ 1,919'-2,173' (12/18/03)  
DRILLED OUT 8/6/08CIBP @ 3,136' w/ 25 SX (12/18/03)  
TOC @ 2,882'  
DRILLED OUT 8/10/08**9-5/8" 43.5/40# s-95 Csg @ 4,500'**CMT W/ 375 SX C W/ ADD  
CMT W/ 900 SX LITE W/ ADD  
CIRC 152 SX TO SURFACE50 SX CMT PLUG F/ 4,450'-4,850' (3/23/93)  
DRILLED OUT 8/10/08CIBP @ 9,620 (1/16/11)  
DRILLED OUT 1/24/11  
NEW PLUG SET AT 9580'**TUBING DETAIL (3/3/22)**301 JTS 2-7/8" DUOLINE 20 IC TBG  
5½" 17# ASX PACKER @ 9580'

CIBP @ 9,975' w/ 35' CMT (8/19/08)

CIBP @ 11,590' w/ 35' CMT (3/23/94)

CIBP @ 12,300 w/ 35' CMT (2/19/81)

CIBP @ 12650' (2/19/81)

**5½" 17/20/23# N-80, s-95 Csg @ 12,967'**CMT W/ 1400 SX HL W/ ADD  
CMT W/ 800 SX CLASS H W/ ADD  
TIE BACK TO 9-5/8  
TOC @ SURF PER CBL (8/18/08)TD @ 12,992'  
PBTD @ 9,940**P&A PERFS (12/19/2003)**PERFS @ 950' (PRESSURED UP NO RATE). SQZD ON 3/6/11.  
PERFS @ 773' (SQZD W/ 40 SX)  
PERFS @ 60' (SQZD W/ 25 SX)**QUEEN PERFS (3198 - 3222')**9/29/1994: PERF 3198-3206', 3214-3222' FRAC W/  
30,000# 20/40 MESH BRADY SAND  
8/11/08: SET CMT RETAINER @ 3130'. SQZD PERFS W/ 350  
SX C NEAT. DO CMT RETAINER & PLUG. CSG TESTED TO  
800 PSI GOOD.  
3/3/11: RE-SQZD PERFS.**CASING LEAKS**1/7/2009: LEAK F/ 4583-4644'. SQZD W/ 100 SX.  
1/13/2011: LEAK F/ 24'-47'. SQZD W/ ½ BBL CMT. RAN  
CAMERA AND FOUND MORE PIN HOLES & SPLITS. WASH  
OVER TOP 2 JTS OF CSG, BACKED OFF & REPLACED.  
3/3/2011: LEAK @ 4325'. SQZD.  
3/14/11: LEAK F/ 4598-4608'. SQZD.**WOLFCAMP PERFS (9670 - 9875')**

8/20/2008: PERF 9670 - 9875' ACIDIZED W/ 8,000 GAL ACID

**STRAWN PERFS (11634 - 11,648')**1/19/1981: PERFS 11,634-11648', 4 JSPF, ACIDIZED W/  
2000 GAL 7½% MS ACID**MORROW PERFS (12,516 - 12,702')**1/19/81: PERF 12516-12524', 12536-12540' ACIDIZED W/  
2500 GAL 7½ MS ACID  
1/19/81: PERFS 12668-12672', 12676-12680', 12693-  
12702' W/ 2 SPF ACIDIZED W/ 3500 GAL 7½% MS ACID



**District I**  
1625 N. French Dr., Hobbs, NM 88240  
Phone:(575) 393-6161 Fax:(575) 393-0720  
**District II**  
811 S. First St., Artesia, NM 88210  
Phone:(575) 748-1283 Fax:(575) 748-9720  
**District III**  
1000 Rio Brazos Rd., Aztec, NM 87410  
Phone:(505) 334-6178 Fax:(505) 334-6170  
**District IV**  
1220 S. St Francis Dr., Santa Fe, NM 87505  
Phone:(505) 476-3470 Fax:(505) 476-3462

**State of New Mexico**  
**Energy, Minerals and Natural Resources**  
**Oil Conservation Division**  
**1220 S. St Francis Dr.**  
**Santa Fe, NM 87505**

CONDITIONS  
  
Action 89798

CONDITIONS

Operator: Spur Energy Partners LLC 9655 Katy Freeway Houston, TX 77024	OGRID: 328947
	Action Number: 89798
	Action Type: [C-103] Sub. Workover (C-103R)

CONDITIONS

Created By	Condition	Condition Date
kfortner	None	7/13/2023